

Washington University School of Medicine

Digital Commons@Becker

Posters

2006: Alcohol and Tobacco Dependence: from
Bench to Bedside

2006

Race, tobacco, and alcohol in a high risk family study

Alexis Duncan

Wilma Calvert

Collins Lewis

Kathleen K. Bucholz

Follow this and additional works at: <https://digitalcommons.wustl.edu/guzeposter2006>



Part of the [Medicine and Health Sciences Commons](#)

Recommended Citation

Duncan, Alexis; Calvert, Wilma; Lewis, Collins; and Bucholz, Kathleen K., "Race, tobacco, and alcohol in a high risk family study" (2006). *Posters*. Paper 10 Samuel B. Guze Symposium on Alcoholism. <https://digitalcommons.wustl.edu/guzeposter2006/10>

This Poster is brought to you for free and open access by the 2006: Alcohol and Tobacco Dependence: from Bench to Bedside at Digital Commons@Becker. It has been accepted for inclusion in Posters by an authorized administrator of Digital Commons@Becker. For more information, please contact vanam@wustl.edu.

Race, tobacco, and alcohol in a high risk family study

Alexis Duncan, Wilma Calvert,
Collins Lewis, and Kathleen Bucholz



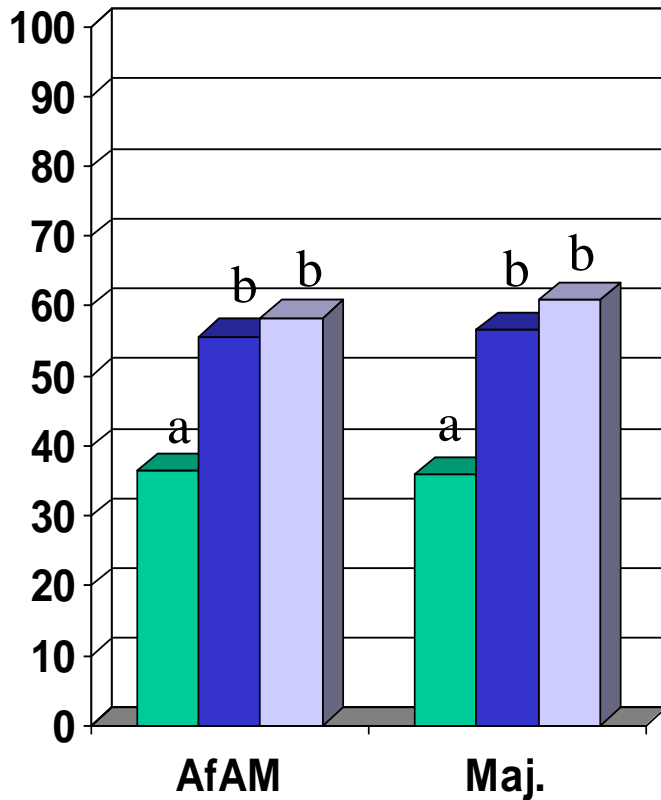
Objective

- To examine the prevalence of alcohol and tobacco use and dependence by race and family risk type

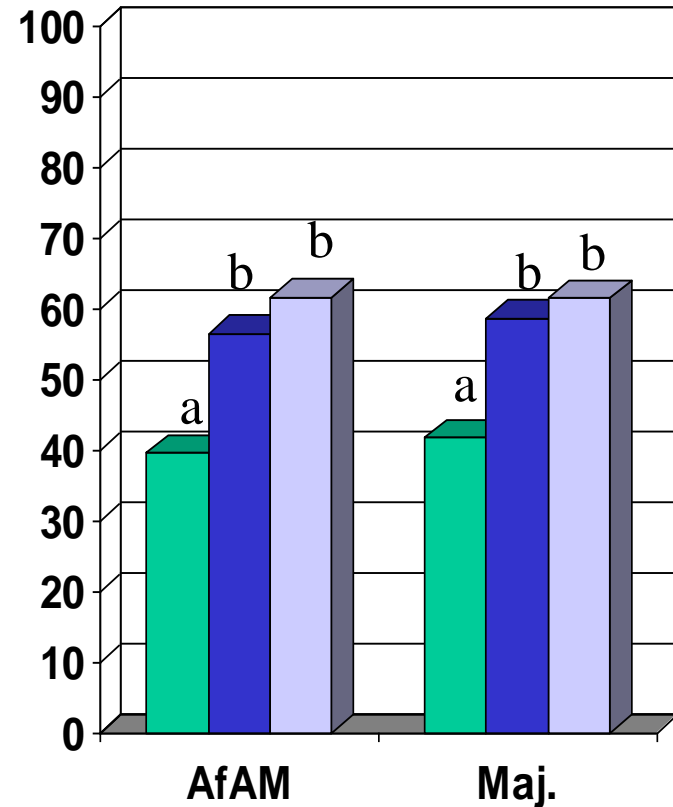
Methods - MOFAM

- Family study of Missouri residents – only data from offspring identified from Missouri birth records used here
- Over-sampled for African American (AfAm) race (>50% AA)
- Three risk groups based on paternal excessive alcohol use:
 - Recurrent drunk driving (RDD; ascertained from driving records), Maj. n=138, AfAm n=62
 - High risk (mother of children reported father drank excessively), Maj. n=99, AfAm n=126
 - Control (drawn from general population, irrespective of paternal alcohol status), Maj n=139, AfAm n=222

Tobacco - Full Sample



Ever smoked cigarette



Ever used any form of tobacco



Control



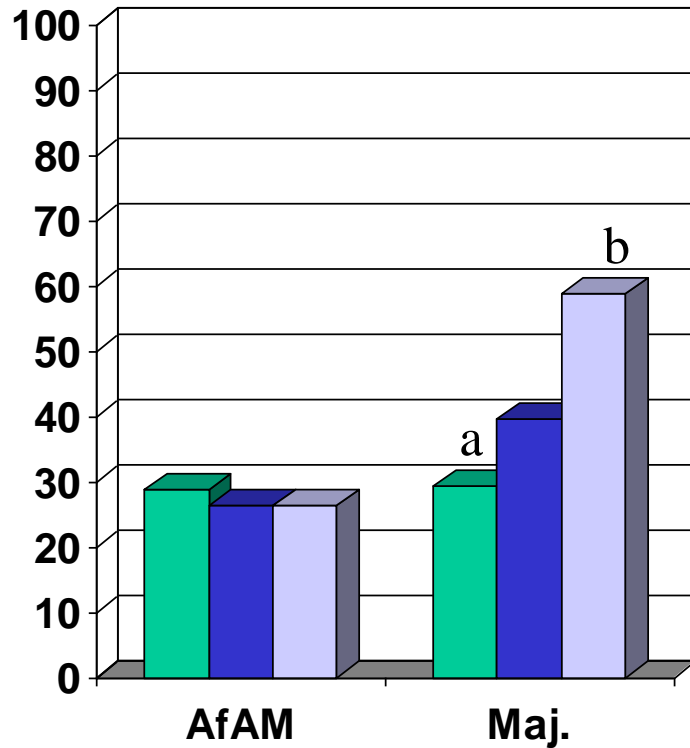
High risk



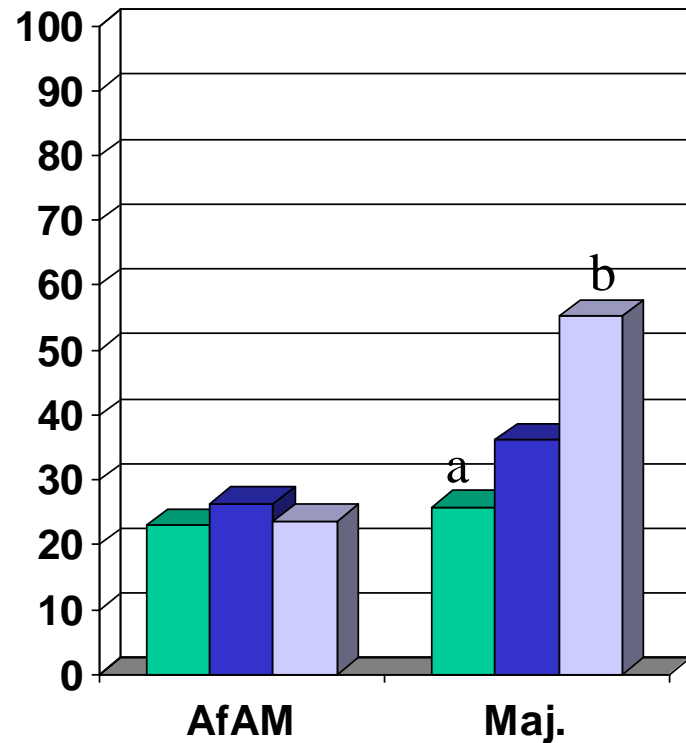
RDD

Bars with different letters differ significantly $p \leq .05$

Tobacco - Users Only



Ever smoked 100 cigarettes*



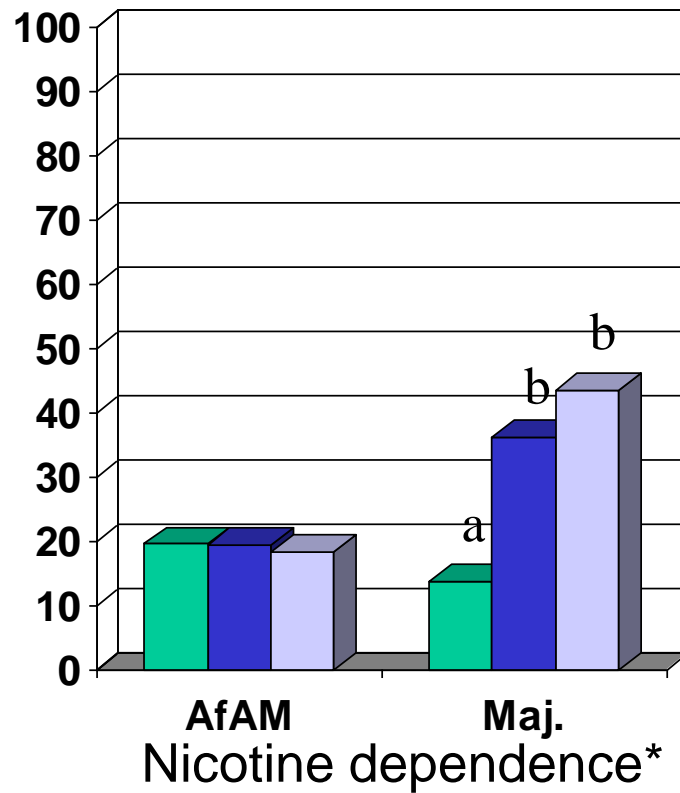
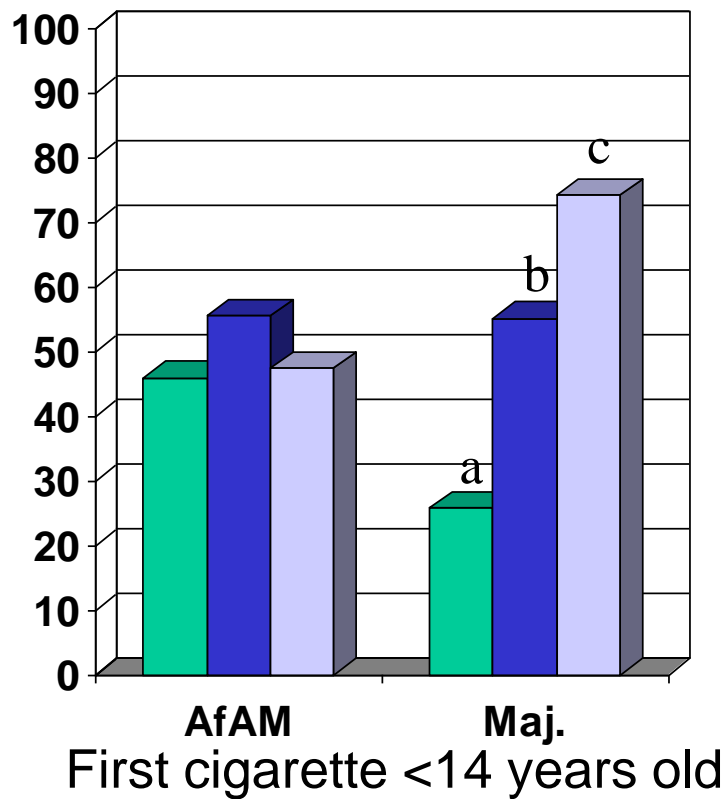
Smoked daily for ≥ 2 months*

Control High risk RDD

Bars with different letters differ significantly $p \leq .05$

*Maj > AfAM $p \leq .05$

Tobacco - Users Only

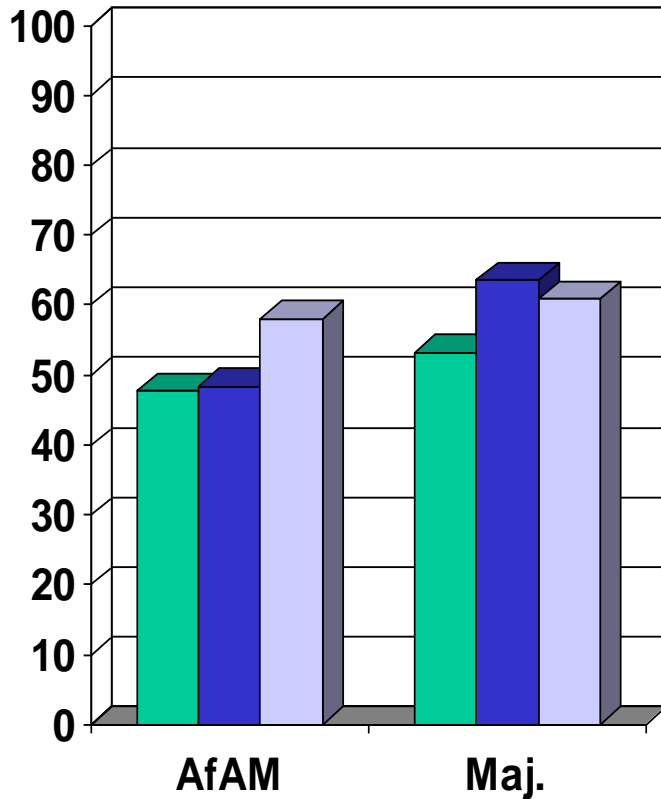


Control High risk RDD

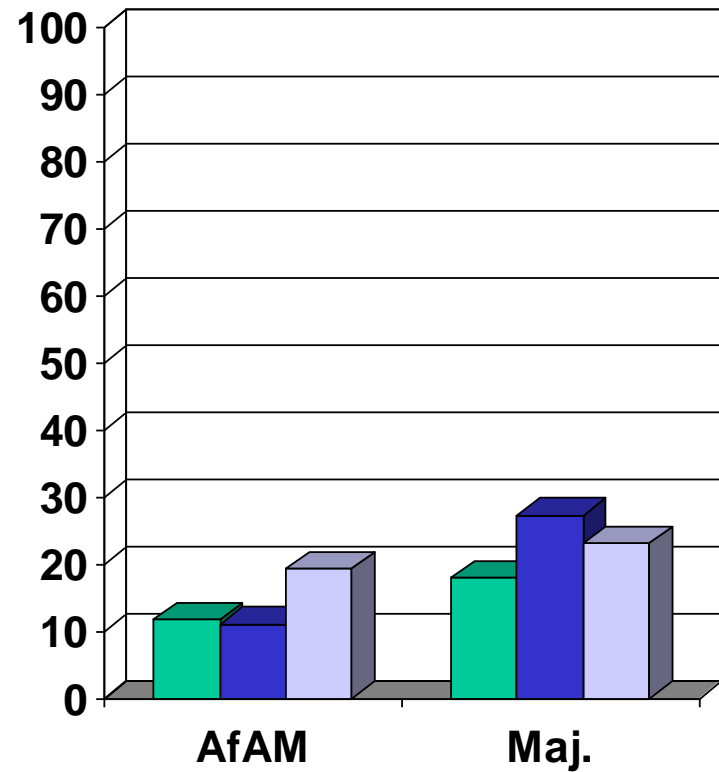
Bars with different letters differ significantly $p \leq .05$

*Maj > AfAM $p \leq .05$

Alcohol - Full Sample



Ever had an alcoholic drink*

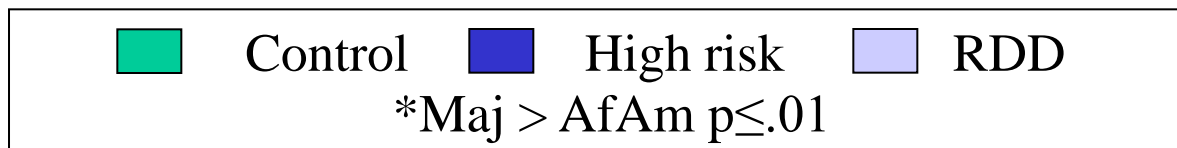
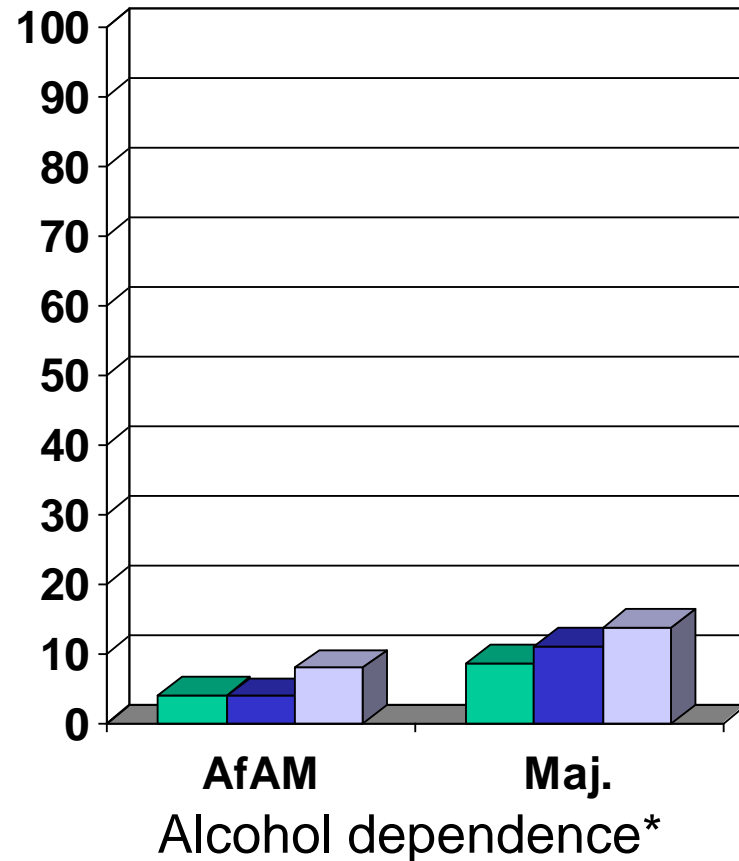
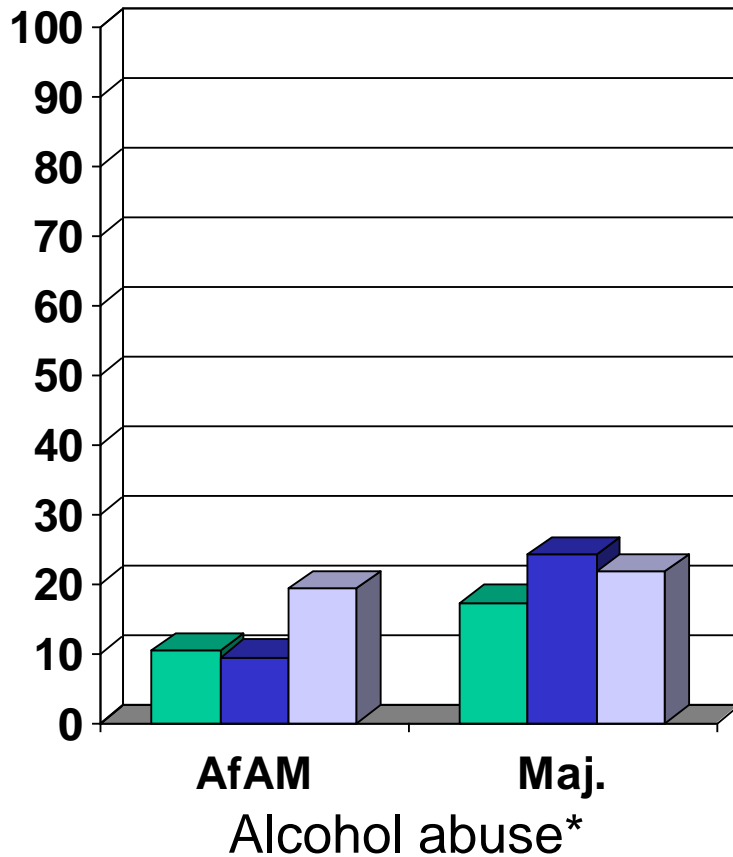


Alcohol abuse or dependence*

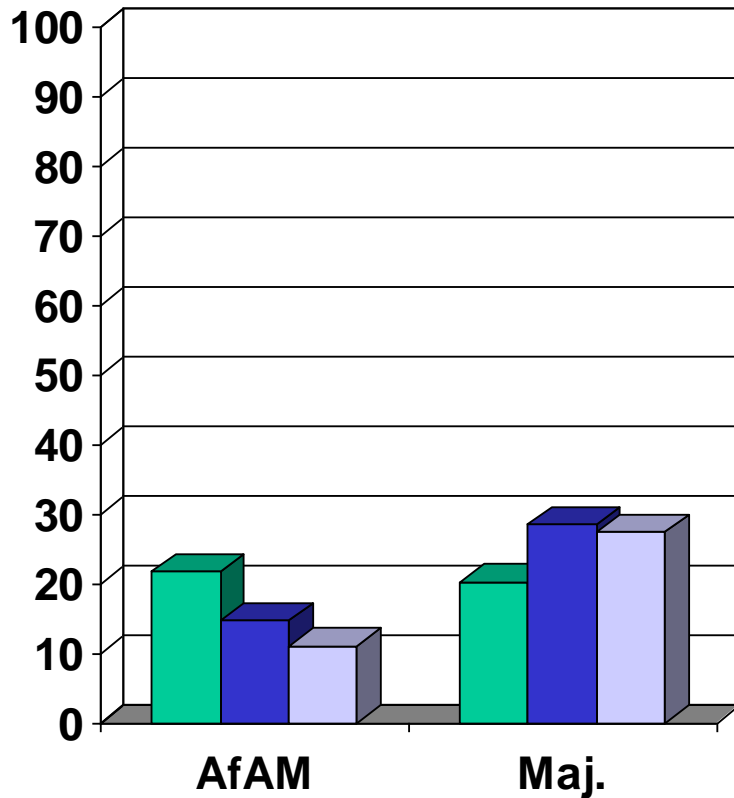
Control High risk RDD

*Maj > AfAm $p \leq .01$

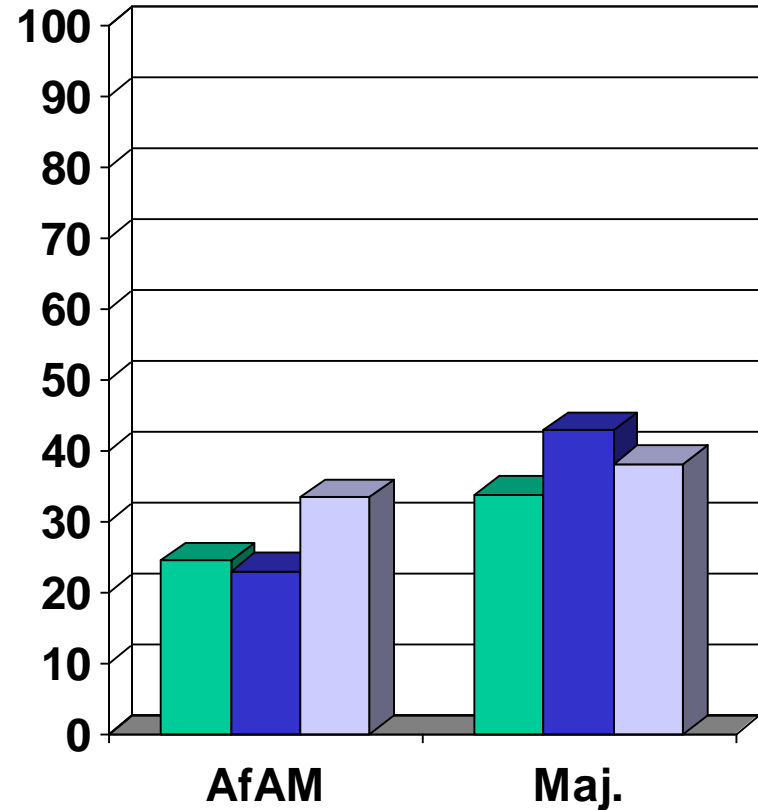
Alcohol - Full Sample



Alcohol - Users Only



First drink >14 years old

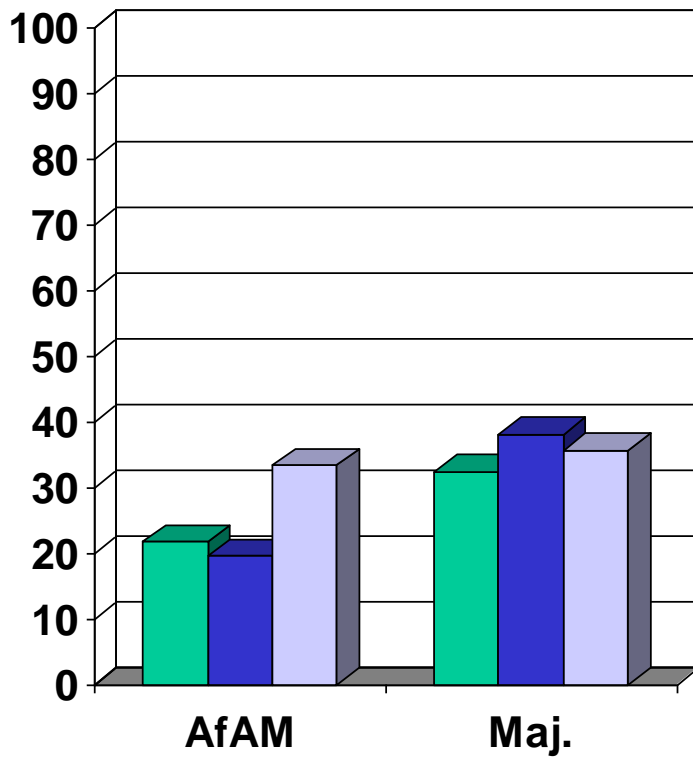


Alcohol abuse or dependence*

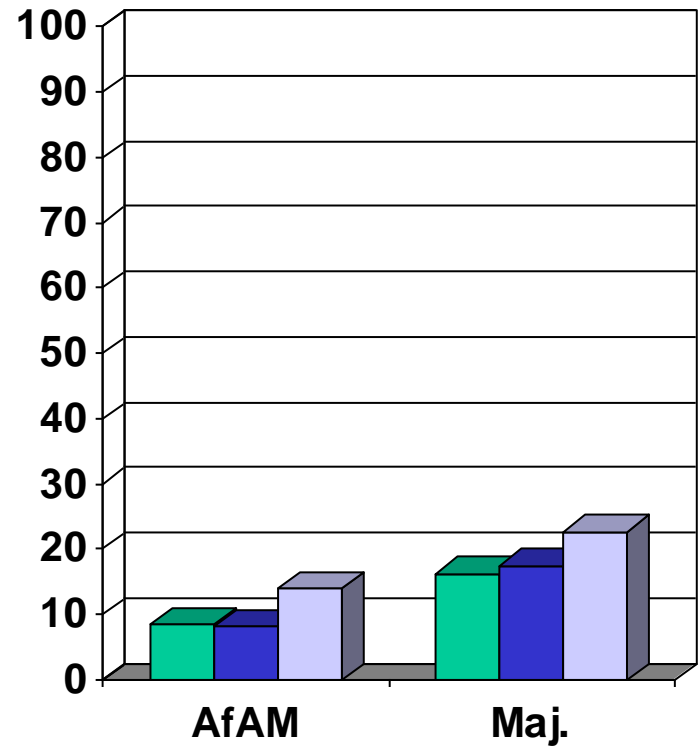
Control High risk RDD

*Maj > AfAm $p \leq .01$

Alcohol - Users Only



Alcohol abuse*



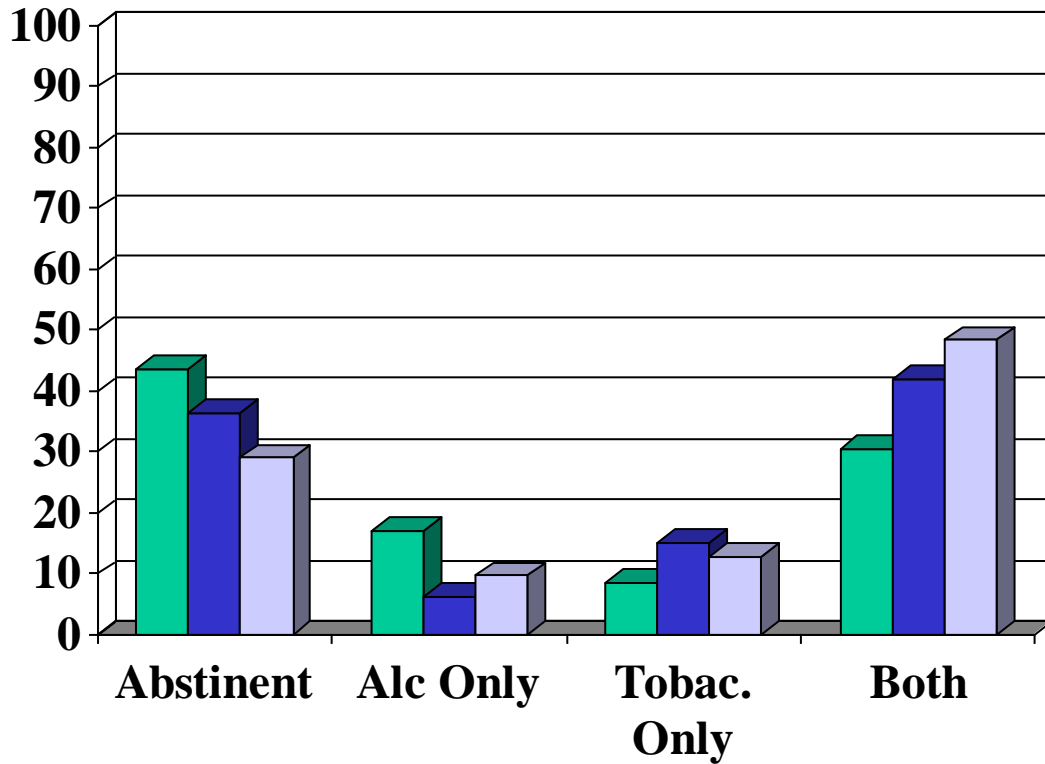
Alcohol dependence*

Control High risk RDD

*Maj > AfAm $p \leq .01$

Alcohol and Tobacco Use

Full sample – African Americans



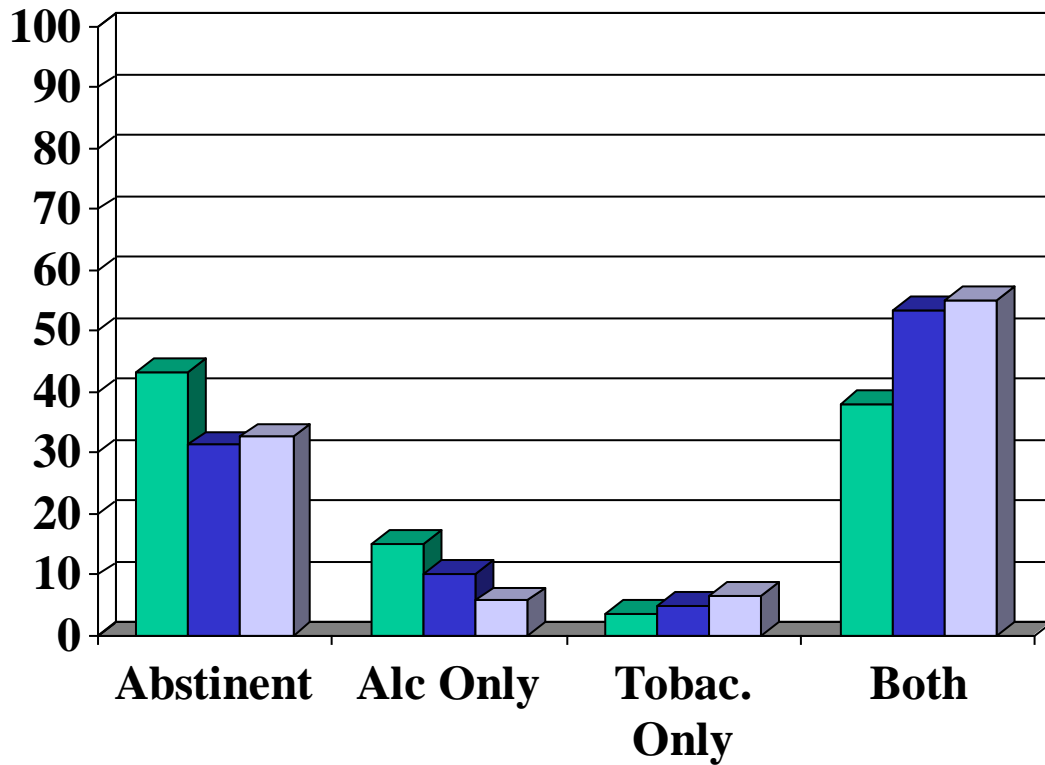
Control

High risk

RDD

Alcohol and Tobacco Use

Full sample – Majority



 Control

 High risk

 RDD

Age onset of substance use and maximum drinks among users

	Control	High Risk	RDD
Age first smoked			
Majority	14.9 (2.7) ^a	13.1 (2.7) ^b	12.0 (3.0) ^b
AfAm	13.7 (3.0)	13.2 (3.2)	13.9 (3.4)
Age first drank*			
Majority	15.4 (2.4) ^a	14.6 (2.1)	14.6 (1.9) ^b
AfAm	15.5 (2.6)	16.2 (2.8)	16.2 (2.5)
Maximum # of drinks in 24 hrs**			
Majority	11.2 (7.8)	15.4 (15.3)	11.2 (7.8)
AfAm	7.8 (8.6)	9.5 (11.2)	7.8 (8.6)

Numbers with different subscripts differ significantly $p \leq .05$

*Maj < AfAm $p \leq .05$

** Maj > AfAm $p \leq .05$

Results Summary

- Maj. Offspring were significantly more likely to have substance use disorders, to ever drink, and had lower age onset of drinking and a higher number of maximum drinks in 24 hrs. than AfAm offspring
- There were no significant differences between risk groups for either AfAm or Majority Subjects for alcohol variables, with the exception that Majority control offspring were significantly younger at first alcohol use than majority RDD offspring
- Regardless of race, subjects in the high risk and RDD groups were more likely to have ever smoked or used any form of tobacco than control subjects.

Results Summary - Continued

- Among tobacco users:
 - Majority RDD offspring were more likely than majority control offspring to smoke regularly, initiate smoking at an early age, and be nicotine dependent.
 - Majority high risk offspring were more likely than majority control offspring to initiate smoking at an early age and be nicotine dependent
 - There were no significant difference among African American tobacco users for any tobacco variables

Conclusions

- Majority offspring are more likely to have alcohol and nicotine use disorders than African American offspring.
- Race may mediate the effect of paternal excessive drinking on tobacco use and dependence in offspring.