

Washington University School of Medicine

Digital Commons@Becker

Washington University Record

Washington University Publications

12-5-1974

Washington University Record, December 5, 1974

Follow this and additional works at: <https://digitalcommons.wustl.edu/record>

Recommended Citation

Washington University Record, December 5, 1974. Bernard Becker Medical Library Archives.
<https://digitalcommons.wustl.edu/record/14>.

This Article is brought to you for free and open access by the Washington University Publications at Digital Commons@Becker. It has been accepted for inclusion in Washington University Record by an authorized administrator of Digital Commons@Becker. For more information, please contact vanam@wustl.edu.

WU Record

Published for the Washington University Community

December 5, 1974

Olin Fellowship Program Enhances Postgraduate Studies for Women

By Dorothy Brockhoff

Rhodes Scholarships have long been recognized as scholastic plums for young men eager to pursue graduate work; now a comparable program for women interested in taking advanced degrees is functioning at Washington University. A joint enterprise of this University and The Monticello College Foundation, ten Mr. and Mrs. Spencer T. Olin Fellowships for Women were established last spring by the Foundation as a tribute to Mr. and Mrs. Olin's service to Monticello College and to the Foundation.

Because the program is so new, only nine awards were made this year from a large pool of women applicants who sought admission to graduate programs or professional schools at W.U. The fellowships went to a group of academically gifted and highly motivated females all eager and determined to attain graduate and/or professional degrees in a variety of disciplines. Individually, they are as diverse as the scholastic fields to which they are committed. Two are enrolled in the Law School; one is studying for a joint M.D.-Ph.D.; another is an aspirant for a doctorate in biochemistry. Three are represented in the professional schools of law, architecture, and social work. Another three are Ph.D. candidates in philosophy, English, and comparative literature, respectively.

The awards they won are substantial. Each recipient of a Mr. and Mrs. Spencer T. Olin Fellowship receives an annual stipend of up to \$2500 in addition to full tuition costs. The fellowships are renewable for a period of four years or the completion of the program of advanced study, whichever is first.

Among the winners was Nancy Pope from Brown University. A candid young woman with definite ideas on a variety of subjects, she commends the establishment of the Olin Fellowships because she believes that they strike a blow at the historical inequality of women scholars. Ms Pope is heartened by the



Nancy Pope, one of the nine Olin Fellows

(Photo by Richard N. Levine)

Fellowships which, she points out, "encourage women to study for the Ph.D. or its equivalent rather than to settle for something lower in the academic hierarchy." After earning her A.B. degree in 1973 magna cum laude with a Phi Beta Kappa key, Ms Pope, who was a National Merit Scholar, took a year off from her studies "to live with a family as a third part-time parent" and to work part time as an editor and writer in Providence, Rhode Island.

Ellen Li is another Olin fellow. A Stanford University graduate, she was a National Merit semifinalist who made Phi Beta Kappa as a junior. Ms Li was a National Science Foundation Research Participant while at Stanford. Now enrolled in the M.S.T.P., (Medical Scientist Training Program) at W.U., she is aiming for both an M.D. and Ph.D. and a career where she can combine research with patient care.

Both law school recipients of Olin Fellowships, Diane Leventhal Sleek and Margaret Whitley were attracted to law because of its opportunities for service. Ms Sleek intends to obtain a master's

(Continued on page 4)

Weiss To Retire As Personnel Director; White Named to Post

Mary D. Weiss, director of WU's Personnel Office, will retire at the end of the current academic year after 27 years as a member of the University's administrative staff. Next semester, Mrs. Weiss will reach mandatory retirement age.

Her successor will be Mrs. Gloria White, WU Affirmative Action Officer since 1972, it was announced by Joe F. Evans, Associate Vice Chancellor for Administrative Services, who has administrative responsibility for the personnel area. Mrs. White will continue to serve as Affirmative Action Officer and in that capacity will continue to report to Executive Vice Chancellor Carl A. Dauten. The Affirmative Action Officer is responsible for WU's program in Equal Employment Opportunity.

"Mrs. Weiss has played a key role in the substantial growth of our Personnel Office over the past two decades," Mr. Evans said. "Her experience is an invaluable asset and it is fortunate that Mrs. White will be able to work closely with her before assuming the directorship. As an integral part of the Personnel Office, the University's Affirmative Action program should continue to show the marked progress it has under Mrs. White's leadership."

Mrs. Weiss joined WU in 1948 as Personnel Assistant and later also assumed the position of Payroll Manager. In 1961 when the first central Personnel Office on campus was formed she was appointed Assistant Director. She held the latter post until 1972, when she was named Director of Personnel. A graduate of the University of Kansas, Mrs. Weiss is a member of Phi Beta Kappa.

After serving 12 years as a high school counselor and teacher in the St. Louis Public School System, Mrs. White joined WU in 1967 as Associate Director of the Upward Bound Program. She was named director of the Office of Special Projects and of the Career Scholarship Program in 1968 — posts she held until her appointment as Affirmative Action Officer.

2 WU Wind Ensemble Dedicated to Promoting And Performing Serious Band Music



Dan Presgrave, left, conductor of the WU Wind Ensemble, is also assistant conductor of the Webster Symphony. He is a former conducting student of Leonard Slatkin's and John Paul James'. Lu Kleppinger, right, Wind Ensemble saxophonist, is a senior on campus majoring in art history.

(Photos by Richard N. Levine)

By Anne Hallett

Through open auditions and selective appointments an exciting group of young artists dedicated to the proposition that serious band music has an audience has emerged on campus. The Washington University Wind Ensemble, under the direction of Dan Presgrave, has been nurtured through a three-year building program and the result is a finely honed performing group of 52 musicians considered among the finest non-professional aggregations in the area.

The Wind Ensemble grew out of a group known as the Washington University Band. But Presgrave an instructor in the Department of Music, acted as the catalytic agent for playing symphonic band music when he assumed the role of conductor in 1972. He began to establish with the name change a new image for the group designed to attract principal musicians interested in serious concert work. This year's ensemble is composed primarily of WU students (80 per cent, most of whom are non-music majors), while the remaining members come from five other metropolitan colleges and the community-at-large.

The second in a series of four formal concerts given on Sunday afternoons will be December 15 at 3 p.m. in Edison Theatre. The full ensemble will perform Alfred Reed's "Russian Christmas Music," an impression of Old Russia during the jubilant Christmas season based on the liturgical chant of

the Eastern Orthodox Church, as a highlight of the program.

Ten wind instrumentalists will be featured in Darius Milhaud's "Symphony No. 5," chamber music extracted from Gaylord Music Library—a "first-rate storehouse of musical literature" according to Presgrave, who delves into the library's inventory on a regular basis. Other selections on the December 15 program are Charles Ives's "Variations on America," Paul Hindemith's March from "Symphonic Metamorphosis," William Schumann's "Chester Overture" and Roger Nixon's "Fiesta del Pacifico."

One of five performing organizations sponsored by WU's Department of Music, the Wind Ensemble is attracting more students from the campus to its particular discipline each year. Rehearsals in the new Paul Tietjens Hall Tuesday and Thursday afternoons are exacting under the direction of Presgrave and his assistant conductor Edward McKee, both members of the St. Louis Philharmonic and the Webster Symphony Orchestra. Yet the ensemble's concentrated energy and considered practice has manifested itself in a performing group which flourishes on the concert stage.

For those who might enjoy wind ensemble music at home a stereo recording by Crest Records, "Washington University Wind Ensemble in Concert," released in April, 1974, is available for \$4 by calling the Music Department, ext. 4582.

Jewish Studies Area Established at WU

A new curriculum program, the Jewish Studies Area, has been established at Washington University. Steven Schwarzschild, acting chairman and professor of philosophy and Judaic Studies, said that the interdisciplinary program will offer instruction in such diverse disciplines as history, a variety of languages, philosophy and sociology.

Students will be able to choose from important sectors of Jewish studies including the Hebrew language and literature, classical, medieval and modern Jewish history, Jewish philosophy and culture, and various Jewish entities in the ancient world, Eastern and Central Europe and the Near East.

Professor Schwarzschild emphasized that the focus of the program will differ markedly from the Jewish Studies program elsewhere. "At Washington University," he said, "Jewish Studies will be taught from the point of view of the role of the Jews and Jewish culture in the progress of liberal values in the world at large."

Some Jewish Studies have been available at the University previously, but the formation of this new area will formalize these various course offerings in a structured and well-rounded program. The program developed out of plans drawn up by a student-faculty committee which has been at work for more than two years. Most of the resources for inaugurating this new program including a well-established Judaic library already exist on campus.

The new Jewish Studies Area is supervised by a faculty committee which, in addition to Professor Schwarzschild, who occupies the Chair of Judaic Studies, includes: Solon Beinfeld, associate professor of history; Eric Blanchard, visiting assistant professor in philosophy; David Bronson, professor of German; Leon Gottfried, professor of English, chairman-Art and Archaeology Department; David Hadas, associate professor of English; Richard H. Popkin, professor of philosophy; Joseph R. Rosenbloom, adjunct professor of classics; Joseph Schraibman, professor and chairman of romance languages; Egon Schwarz, professor of German; and Murray Wax, professor of sociology and chairman, Department of Sociology.

Jewish Studies majors will be required to take two years of Hebrew languages (or the equivalent), and one semester each of Jewish history and historical culture during their freshman and sophomore years, and Jewish history and historical culture courses the last two years.

Potpourri of Events Featured At Mallinckrodt Open House

The Mallinckrodt Center Programming Board will present an open house for the WU community combining dance, drama, music, films, games and food to demonstrate the various functions of the center, from 8 p.m. Friday, Dec. 6 to 4 a.m. Saturday, Dec. 7.

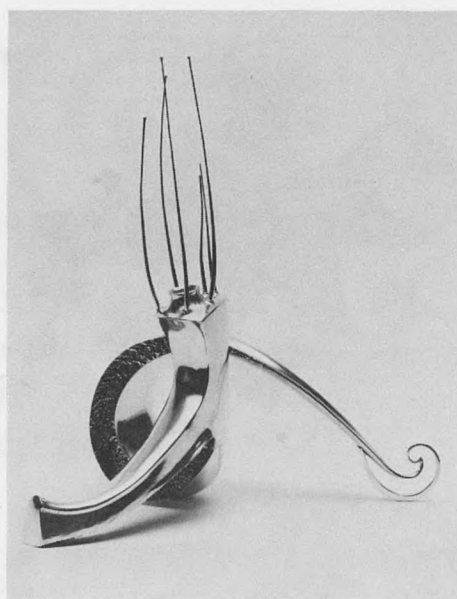
The schedule of events is: 8 p.m., "The World of Lenny Bruce," a two-part show dramatizing the words and trials of the late comedian, starring Frank Speiser, a graduate of the Yale School of Drama, general admission, \$3.50, WU faculty/staff, \$2.50, WU students with S.U. card, \$1.50, sponsored by the Academic Committee, Edison Theatre; WU Dance Division Student Concert, program of compositions choreographed by dance majors (Also at 8 p.m. Saturday, Dec. 7), Edison Dance Studio; Thyrus production of Strindberg's *Miss Julie*, Drama Studio. 9:30 p.m., pinball tournament with prizes, Commons Room; 10 p.m.-midnight, "Second Sight" concert featuring guitarist John Kimsey, main foyer; 10 p.m.-4 a.m., continuous showing of old movies including W. C. Fields, Marx Brothers, Charlie Chaplin, and cartoons, audio-visual room, 325; 10:30 p.m., bingo with prizes, cafeteria; midnight-1 a.m., Dee Werner, folksinger and songwriter, gallery, and 1-2 a.m., Maralin Krawll, blues and ragtime singer, gallery; 2-4 a.m., "Second Sight"; and 4 a.m., free breakfast, cafeteria.

All events are free unless otherwise noted. For further information call Barry Bergey at 863-0100, ext. 4996.

ANNOUNCEMENTS

A COMPUTER SEARCH service that will enable members of the WU community to have virtually instant access to large files of current literature in chemistry, geosciences, engineering, biology, business, education and other disciplines, is now available at Olin Library on a fee basis to any library user. For further information, call Gwen Reveley, 863-0100, ext. 4572.

The **WU Record** is published weekly during the academic year by the Office of Information, director, Roger Signor; editor, Kathy Pearson; contributing editors, Dorothy Brockhoff, King McElroy; calendar editor, Anne Hallett. Photographs by Herb Weitman, Rick Levine and Gail Cissna. Address all communications to the editor, Box 1142.



"Bi-Shell VIII," 1974, a sterling silver sculpture by Heikki Seppa, on display at the St. Louis Art Museum.

THE THIRD ST. LOUIS ARTISTS Exhibition at the St. Louis Art Museum through January 5 features work by Heikki Seppa, professor of fine arts at WU, and Muriel Nezhnie Helfman, who is married to Sheldon S. Helfman, associate professor of architecture at WU. Professor Seppa is exhibiting 36 pieces of jewelry and objects, and Ms. Helfman has 18 tapestries on display.

THE SAMUEL BECKER GRANT University Health Service has announced the following schedule changes for December 13-January 13: the infirmary will close at noon Friday, Dec. 13, and will reopen at 7 a.m. Monday, Jan. 13. The outpatient clinic will close at noon, Tuesday, Dec. 24 and Dec. 31. It will be closed all day Wednesday, Dec. 25 and Jan. 1. Other than the above exceptions, the clinic will be open from 8:30 a.m.-4 p.m. Monday-Friday. Physicians will be in attendance from 9 a.m.-noon. For emergency care after regular hours call 533-5858 and ask for the WU main campus physician on call.

A SEASON'S GREETINGS CARD designed by Elaine Nehman, WU junior majoring in graphic design, has been selected for Chancellor William H. Danforth's use this year. About 25 students in the junior graphic design section taught by Stan Gellman undertook the project. Ms. Nehman's design was a black and white photograph of a gargoyle against a Gothic arch. Runners up were: Joni Bronk, Chris Walck, R. Chao, Aron Presler, and Bonni Blustein. All of the cards are on display on the second floor of Bixby Hall across from Room 209.

WU Engineers' Scholarships Awarded to Nine Students

Nine WU engineering students were awarded \$1000 Washington University Engineers' Scholarships at a luncheon at Whittemore House recently.

The Engineers' Scholarship Fund, initiated this year, provides scholarships to undergraduate students of the School of Engineering and Applied Science on the basis of academic ability and financial need. A lump-sum gift of \$3400 establishes one four-year, \$4000 scholarship which carries the name of the sponsor who provided it or any other name designated by the sponsor. Students are awarded \$1000 a year for each undergraduate year of study.

The students and their sponsors are: David Paris, Mariemont, O., freshman—Kenneth Balk, president, Kenneth Balk and Associates Consulting Engineers; Levi Gurule, Barston, Calif., senior—William K. Becker, vice president, Becker, Becker and Pannel Consulting Structural Engineers, named in memory of his father, William C. E. Becker; Mel Eatherington, Springfield, Ill., freshman—Jerome Brasch, president, Brasch Manufacturing Co. named in memory of his brother, Norvell C. Brasch; Jim Nieters, Kirkwood, Mo., junior—Gordon Glunt, president, Blackmore and Glunt, Inc., named the Building Environmental Systems Scholarship.

Steve Horne, Cleveland Heights, O., sophomore, and Margaret Andregg, Kansas City, Mo., junior—Harold D. Jolley, retired vice president, CECO Corporation; Bill Hasek, Melrose Park, Ill., freshman—Stanley Lopata, president, Carboline Company, named the Carboline Company Scholarship; Paul Hasser, St. Louis, freshman—Louis Sachs, president, Sachs Electric Corporation, and Henry Chu, Kansas City, Mo., senior—William K. Y. Tao, president William Tao and Associates.

NEWS BRIEFS

Varsity Fall Sports at WU concluded in November on a highly successful note. The soccer team closed its season with a 9-0 victory over the University of Missouri at Rolla. Its regular season record was nine victories and three losses. The Battling Bears football squad ended its season with a 10-8 victory over Washington and Lee, which gave them an overall 5-4 record. It was the third consecutive winning season for the football Bears. The WU cross-country team posted respectable records in invitational competitions, and finished with a 6-1-0 record in dual meets.

Calendar

December 5-11

THURSDAY, DECEMBER 5

2 p.m. Technology and Human Affairs Seminar, "Simulation and Cost Optimization of Solar Heating of Buildings in Northern Regions," Prof. Bruce D. Hunn, Dept. of Mechanical Engineering, Clarkson College of Technology. 101 Cupples II.

4 p.m. Department of Philosophy Colloquium, "Some Formal Problems with the Von Neumann and Morgenstern Theory of Two-Person, Zero-Sum Games, I: The Direct Proof," Prof. Edward F. McClennon, WU Dept. of Philosophy. 211 Busch.

4 p.m. Department of Chemistry Seminar, "Stereochemical Studies of Sulfuranes and Related Compounds," Prof. James Cullen Martin, U. of Illinois. 311 McMillen Lab.

4 p.m. Department of Sociology Seminar, "Emergent Ethnicity," Prof. William Yancey, Temple University. 303-304 Mallinckrodt.

MONDAY, DECEMBER 9

4 p.m. Department of English Poetry Reading by Richard Howard, poet and literary critic, poetry editor *New American Review*, Pulitzer Prize Winner (1970) for *Untitled Subjects*. Hurst Lounge, Duncker.

7:30 p.m. Center for Biology of Natural Systems Meeting, "Effect of Energy Price Increases on Crop Production," William Lockeretz, Robert Klepper and Michael Gertler, members of Agricultural Energy Project. 241 Compton.

TUESDAY, DECEMBER 10

8 p.m. Joint Electrical Engineering Department and St. Louis Chapter, IEEE Seminar, "Low Noise Receivers: Their Technology and System Applications," by S. Okwit, 1974 MTT National Lecturer. 100 Cupples II.

WEDNESDAY, DECEMBER 11

11 a.m. Assembly Series Lecture, "Living and Dying," Robert Jay Lifton, Foundation's Fund for Research in Psychiatry Professorship, Yale. Graham Chapel.

2:15 p.m. Department of Chemical Engineering Seminar, "The Reuse of Waste Plastics as Blends," Prof. Donald R. Paul, U. of Texas. 100 Cupples II.

EXHIBITIONS

"Executive Order 9066," a collection of black and white photographs of Japanese Americans interned on the West Coast after the Pearl Harbor attack. Sponsored by the St. Louis Chapter of the Japanese American Citizens League and the Asian Arts Society. Steinberg Hall. Monday-Friday, 9 a.m.-5 p.m.; Saturday, 10 a.m.-4 p.m.; Sunday, 1-5 p.m. December 6-January 10.

Modern American prints from WU collection. Steinberg Hall. Monday-Friday, 9 a.m.-5 p.m.; Saturday, 10 a.m.-4 p.m.; Sunday, 1-5 p.m. Through January 10.

Books on cryptography from the Philip Mills Arnold Semeiology Collection. Level three, Olin Library. Monday-Thursday, 8 a.m.-midnight; Friday, 8 a.m.-10 p.m.; Saturday, 9 a.m.-10 p.m.; Sunday, 11 a.m.-midnight. Through December 31.

"Chinese Painting of Horses," paintings by Chao Chiung Li, graduate student from Taiwan in WU School of Architecture. All drawings available for purchase. Stix House. Monday-Friday, 2-4 p.m.; Saturday and Sunday, 10 a.m.-4 p.m. Through December 16.

Memorabilia of the St. Louis Car Company, including scale models and photographs of vehicles built here from 1887-1973. Level five, Olin Library. Weekdays only, 8:30 a.m.-5 p.m.



This brush and ink painting is part of an exhibit on "Chinese Painting of Horses," by Chao Chiung Li, a WU graduate architecture student, on display Dec. 5-16 in the Stix House on campus.

FILMS

THURSDAY, DECEMBER 5

7:30 p.m. WU Filmboard Series, Visconti's "The Stranger." Brown Hall Theatre. Admission \$1.

FRIDAY, DECEMBER 6

7:30 & 9:30 p.m., WU Filmboard Series, "The Last of Sheila"; midnight, "Start the Revolution Without Me" Wohl Center, Line D. Admission \$1 to each film.

SATURDAY, DECEMBER 7

2, 7:30 & 9:30 p.m., WU Filmboard Series, "Paper Moon"; 4 p.m. & midnight, "Start the Revolution Without Me." Brown Hall Theatre. Admission \$1 to each film or \$1.50 to the *matinee* double feature.

9 p.m. Classic Film Series, Classic Cartoons "Animal Farm," "Ichabod and Mr. Toad," and "Dumbo." Wohl Center, Line D. Admission 50c.

SUNDAY, DECEMBER 8

2:30 p.m. WU Special Film Series, "Pygmalion." Steinberg Auditorium. Admission \$1.25.

TUESDAY, DECEMBER 10

7:30 & 9:30 p.m. WU Filmboard Series, Francois Truffaut's "The 400 Blows." Brown Hall Theatre. Admission \$1.

WEDNESDAY, DECEMBER 11

7:30 p.m. WU Filmboard Series, "Lucia." Brown Hall Theatre. Admission \$1.

SPORTS

FRIDAY, DECEMBER 6

Swimming, Southeast Missouri State University Relays at Cape Girardeau. (Also Saturday, December 7)

SATURDAY, DECEMBER 7

11 a.m. Wrestling, All Missouri Wrestling Tournament at Forest Park Community College.

WEDNESDAY, DECEMBER 11

4 p.m. Wrestling, WU vs. U. of Missouri, St. Louis U., and Southeast Missouri State. WU Field House.

PERFORMING ARTS

FRIDAY, DECEMBER 6

8 p.m. "The World of Lenny Bruce," with Frank Speiser. Sponsored by the Academic Committee. Edison Theatre. General admission \$3.50; WU faculty/staff \$2.50; WU students \$1.50.

8 p.m. WU Dance Division Student Concert, program of compositions choreographed by dance majors. Edison Dance Studio, Mallinckrodt. (Also 8 p.m. Saturday, Dec. 7.)

8 p.m. "Miss Julie," Thyrsus production. Edison Drama Studio, Mallinckrodt.

MUSIC

FRIDAY, DECEMBER 6

8 p.m. An Informal Celebration of Mozart's 218th Birthday, "Happy Birthday Wolfgang." Music and refreshments. Sponsored by the Campus "Y". Women's Bldg. Lounge.

MONDAY, DECEMBER 9

8 p.m. "A Musical Offering," an evening of chamber music by the St. Louis Symphony Orchestra. Concert will feature works by Mozart, Gottschalk and Ives. Edison Theatre. General admission \$4.50; WU faculty/staff \$3; WU students \$2.

Olin

(Continued from page 1)

degree in social work as well as a J.D. degree; Ms Whitley, who majored in social work as an undergraduate at the University of Kansas, is aiming only for the J.D. at this point, but feels that it provides a variety of opportunities.

Ms Sleek, from Penn. State, won the President's Freshman Award there, a Merit Scholarship, and the Evan-Pugh Scholar Junior Award. Ms Whitley was a National Merit Finalist, and a Watkins-Berger Scholar. The five other Olin Fellows, all of whom have equally impressive credentials are: Therese Brendler, University of Texas (biochemistry); Beth Browning, Miami University, Oxford, Ohio (philosophy); Melody Hertzog, University of Rochester (English); Katherine King, University of Michigan (School of Architecture); and Enola Proctor, Butler University (School of Social Work).

In January they all expect to come together to meet the Monticello College Foundation trustees; in April they will participate in the first annual Mr. and Mrs. Spencer T. Olin Conference on the Status of Women in Higher Education and the Professions. To be convened at this campus on April 16-17, this conference will consider "Women in Academic Life," "Women and Success," and the "Political Status of Women: Women as Lawmakers and Voters." Outstanding speakers have been invited. Details on the conference will be announced later.