

Washington University School of Medicine

Digital Commons@Becker

---

PACS News

Program in Audiology and Communication  
Sciences

---

1936

## PACS Bulletin 1936-1937

Program in Audiology and Communication Sciences  
*Washington University School of Medicine*

Follow this and additional works at: [https://digitalcommons.wustl.edu/pacs\\_newsletters](https://digitalcommons.wustl.edu/pacs_newsletters)

---

### Recommended Citation

Program in Audiology and Communication Sciences, "PACS Bulletin 1936-1937" (1936). *PACS News*. Paper 20.  
[https://digitalcommons.wustl.edu/pacs\\_newsletters/20](https://digitalcommons.wustl.edu/pacs_newsletters/20)

This Newsletter is brought to you for free and open access by the Program in Audiology and Communication Sciences at Digital Commons@Becker. It has been accepted for inclusion in PACS News by an authorized administrator of Digital Commons@Becker. For more information, please contact [vanam@wustl.edu](mailto:vanam@wustl.edu).

1936

TEACHERS TRAINING COLLEGE  
*of*  
Central Institute for the Deaf



Affiliated with

UNIVERSITY COLLEGE  
*of*  
Washington University  
SAINT LOUIS

---

DEPARTMENT I

Course for Teachers of the Deaf

DEPARTMENT II

Course for Teachers and Supervisors in Speech Pathology

## TEACHERS' TRAINING COLLEGE BULLETIN

The Teachers' Training College of Central Institute for the Deaf was officially affiliated with University College of Washington University on February 16, 1931. By virtue of this affiliation the degree of Bachelor of Science in Education is granted to fully qualified graduates of the Teachers' Training College of Central Institute for the Deaf who meet the requirements established by the Advisory Board.

In the spring of 1935 a second coordinated curriculum was presented in speech pathology for those seeking to become professional teachers and supervisors in speech correction and speech pathology. The growing demand for such trained persons as well as the existence of the necessary courses either at Washington University or the Central Institute for the Deaf warrants the establishments of this curriculum.

This curriculum requires four years for completion. The Freshman and Sophomore years may be taken at Washington University either in the College of Liberal Arts or in the University College or at any University or accredited Junior College which provides the required instruction. The Junior and Senior years must be taken at Central Institute for the Deaf and Washington University, subject to such requirements as may be imposed by the Advisory Board.

### ADMISSION REQUIREMENTS

#### SCHOLASTIC

1. Graduation from a fully accredited first class High School, meeting the entrance requirements of the College of Liberal Arts of Washington University, as outlined in its bulletin.
2. Successful completion in the College of Liberal Arts or University College of Washington University or in any other University or accredited Junior College of the pre-professional curriculum outlined below:

FRESHMAN YEAR	SOPHOMORE YEAR
English I.....6 units	English II.....6 units
Foreign Language.....6 units	Foreign Language.....6 units
Biological Science, preferably Zoology.....6 units	Physical Science, preferably Physics.....6 units
Mathematics, Latin or Greek.....6 units	Sociology 1.....6 units
Elective.....6 units	Education 1, 2 or Psychology 1, 2.....6 units
Physical Education.....2 units	Physical Education.....2 units
Total...32 units	Total...32 units

The numerals indicate the courses of instruction in the College of Liberal Arts. Elective Courses include: Political Science, Botany, Chemistry, Geology, History, History of Art, Drawing, Mathematics.

The twelve units of Foreign Language must be in the same language.

#### PHYSICAL

1. All applicants must have perfect hearing, speech and sight, and a well-shaped mouth, as these are important in the teaching of speech and lip-reading.
2. No applicant over thirty-six years of age will be accepted.

DEPARTMENT I  
Course for Teachers of the Deaf

PROFESSIONAL CURRICULUM

JUNIOR YEAR

Anatomy and Physiology of Speech and Hearing.....	5 units
Preschool Deaf .....	4 units
Applied Phonetics .....	6 units
*General Psychology (first semester).....	3 units
Tests and Measurements (second semester).....	3 units
Principles of Teaching and Practice Teaching.....	6 units
Principles and Pedagogy of Lip-Reading.....	2 units
Physics of Sound.....	3 units
Total.....	32 units

SENIOR YEAR

Pathology of Speech and Hearing.....	4 units
Advanced Phonetics and Phonetic Laboratory.....	6 units
English for Deaf (first semester).....	3 units
Child Psychology (first semester).....	3 units
Abnormal Psychology (second semester).....	3 units
Speech Correction—Didactic (first semester).....	3 units
Practice of Lip-Reading.....	2 units
Acoustic Laboratory (second semester).....	3 units
Speech Clinic (second semester).....	3 units
Practice Teaching of Oral Method.....	2 units
Total.....	32 units

DEPARTMENT II  
Course for Teachers and Supervisors in Speech Pathology

PROFESSIONAL CURRICULUM

JUNIOR YEAR

Anatomy and Physiology of Speech and Hearing.....	5 units
Applied Phonetics.....	6 units
Principles of Teaching Corrective Speech.....	6 units
*General Psychology (first semester).....	3 units
Tests and Measurements (second semester).....	3 units
Physics of Sound.....	3 units
†Elective .....	6 units
Total.....	32 units

SENIOR YEAR

Pathology of Speech and Hearing.....	4 units
Advanced Phonetics .....	3 units
Phonetic Laboratory .....	3 units
Speech Correction Didactic (first semester).....	3 units
Speech Clinic (credited second semester).....	3 units
Child Psychology (first semester).....	3 units
Abnormal Psychology (second semester).....	3 units
Education 81.....	6 units
Elective .....	4 units
Total.....	32 units

\*Students presenting 6 units in Psychology in their pre-professional curriculum will substitute Education I for this course.

†Students preparing to teach must consult the legal requirements for certificates in their States. By taking courses in summer or by adding to the regular curriculum where grades permit, students may provide themselves training in a second teaching field.

On completion of the Professional Curriculum candidates for the degree of Bachelor of Science in Education are required to pass a comprehensive examination prescribed by the Advisory Board.

## DESCRIPTION OF COURSES

(a) The following courses included in this curriculum are offered at the Central Institute for the Deaf:

### ANATOMY AND PHYSIOLOGY OF HEARING AND SPEECH

A survey of anatomical, physiological and biological subject matter bearing on special fields of hearing and speech; functional tests of hearing; determination of nystagmus reactions; dissection of larynx; comprehensive sketch of auditory and speech fields in the brain.

### PATHOLOGY OF HEARING AND SPEECH

Pathology of the speech organs, ear and labyrinth; differentiation of types of deafness; causes of congenital deafness; physical abnormalities related to speech; special demonstrations in speech clinic; attendance at deaf prevention clinic.

### ACOUSTIC LABORATORY

The principles of the acoustic method, special form of pedagogy designed to salvage residual hearing in deaf children for speech improvement; laboratory demonstrations; practice teaching following this method.

### PHONETIC LABORATORY

The use of laboratory apparatus in recording, reproducing amplifying, and analyzing speech and musical sounds will be demonstrated; practical application of such apparatus is required of each student.

### PHONETICS

The formation and development of elementary English sounds; Bell symbols, international alphabet; the principles and science of speech; voice building and voice analysis.

### PRESCHOOL DEAF

A survey of the history of the Nursery School Movement in America and other countries; the development and training of the child from birth to his fifth year; application of the nursery school procedure to the teaching of the deaf.

### ENGLISH FOR THE DEAF

The development and application of the principles of the English language; their presentation to the deaf child.

### PRINCIPLES OF TEACHING AND PRACTICE TEACHING FOR THE DEAF

A systematic training in the technique of teaching deaf children; classroom procedure; methods of teaching reading, arithmetic, social studies and other elementary school subjects. Demonstrations and practice teaching following these methods.

### PRINCIPLES OF TEACHING CORRECTIVE SPEECH

Teaching methods used for the correction of special disabilities such as short memory span, poor auditory, visual and kinaesthetic associations; therapeutic measures used to improve poor muscular coordination; the adjustment of emotional disturbances;—all of which accompany or are contributory to speech defects.

### SPEECH CORRECTION (DIDACTIC)

The classification and terminology of speech defects; manifestations, underlying emotional disturbances and varying disabilities accompanying each; a survey of contemporary schools; methods of diagnosis and correction of aphasia and other types of speech disorders.

### SPEECH CLINIC

The practical conduct of a speech clinic; obtaining case histories; observation and teaching of the various types of speech defects under supervision.

## DESCRIPTION OF COURSES (Continued)

### GENERAL PSYCHOLOGY APPLIED TO THE DEAF AND SPEECH DEFECTIVE

A survey of the principles of human behavior with emphasis on problems of audition and speech development; the effect of sensory and motor impairment on learning and behavior.

### TESTS AND MEASUREMENTS

A study of the tests used to measure the intelligence and school achievement of normal children; history of testing the deaf child; application of standardized tests to deaf and speech defective children; practice in the administration and scoring of these tests.

### CHILD PSYCHOLOGY

A study of the normal child from birth to adolescence; his sensory equipment, behavior at birth, habit formation, complex learning, language development and social behavior.

### ABNORMAL PSYCHOLOGY

A descriptive and explanatory survey of organic and functional disorders of the sensory, motor and association equipment; mental deficiency; psychoneuroses; psychoses; psychotherapy.

### PRINCIPLES AND PEDAGOGY OF LIP-READING

A presentation and interpretation of a system of instruction for use in the teaching of lip-reading to the hard-of-hearing. Special consideration is given to the consideration of pupil types and speech conservation.

### PRACTICE OF LIP-READING

Application of methods under supervision at lip-reading clinics for children and adults; preparation of supplementary graded material.

### PHYSICS OF SOUND

Principles of the physics of sound of special interest to the teacher of the deaf and speech defective child. Wave motion, elasticity and vibration, reflection and refraction, interference, resonance, phonograph and telephone; radio amplifiers and audiometers.

(b) The courses of this curriculum offered at Washington University are described in the Catalog of the College of Liberal Arts or the bulletin of University College.

## FEES

1. A matriculation fee of \$10.00 is required upon registration.
2. Tuition for the course is \$400.00, payable \$200.00 each year, as follows: \$25.00 initial payment, \$75.00 the opening day of school and \$100.00 the first of February.
3. A comprehensive examination fee of \$3.00 is payable before the examination is given by the Advisory Board.
4. A diploma fee of \$3.00 is payable before graduation.

### ADVISORY BOARD

FRANK MICHAEL DEBATIN, A.M., Chairman - - - - - Dean of University College  
 MAX A. GOLDSTEIN, M.D., F.A.C.S. - - - - - Director of Central Institute for  
 the Deaf  
 FREDERICK WILLIAM SHIPLEY, Ph.D., LL.D., Litt.D. - - - - - Dean of the College of Liberal  
 Arts  
 WILLIAM ROY MACKENZIE, Ph.D. - - - - - Professor of English  
 FRANK LEE WRIGHT, A.M., Ed.D. - - - - - Professor of Education  
 LEE WALLACE DEAN, M.D. - - - - - Professor of Oto-Laryngology  
 JOHN PAUL NAEL, Ph.D. - - - - - Professor of Psychology  
 JULIA M. CONNERY (Ex-officio) - - - - - Principal, Central Institute for  
 the Deaf

### ADMINISTRATIVE OFFICERS

FRANK M. DEBATIN, A.M. - - - - - Dean of University College, Washington University  
 MAX A. GOLDSTEIN, M.D. - - - - - Director of Central Institute  
 JULIA M. CONNERY - - - - - Principal of Central Institute  
 HELEN F. SCHICK, Ph.D. - - - - - Registrar, Teachers' Training College of Central Institute

### FACULTY OF TEACHERS' TRAINING COLLEGE

MAX A. GOLDSTEIN, M.D., Director - - - - - Lecturer on Special Anatomy, Physiology and  
 Pathology; Demonstrator of Acoustic Method and Sense Training  
 JULIA M. CONNERY, Principal - - - - - Instructor in Principles and Practice of Spe-  
 cial Pedagogy; Phonetics; Rhythm; and English  
 MILDRED A. MCGINNIS, B.S. - - - - - Teacher-in-Charge of Speech Correction De-  
 partment; Instructor in Speech Correction and Speech Pathology; Supervisor of  
 Speech Clinic  
 HELEN F. SCHICK, Ph.D. - - - - - Lecturer on General, Child and Abnormal  
 Psychology and Tests and Measurements  
 FRANCES H. LESTER, B.S. - - - - - Teacher-in-Charge of Lip-Reading Depart-  
 ment; Instructor and Critic Teacher in Lip-Reading  
 RAFAEL LORENTE DE NO, M.D. - - - - - Lecturer on Neuro-Anatomy and Physiology  
 of the Brain  
 TO BE APPOINTED - - - - - Lecturer on Physics of Sound

### CALENDAR 1936-1937

Registration, Sept. 21, 22, 23.  
 First Semester begins Sept. 24.  
 Holiday, Thanksgiving Day, Nov. 26.  
 Vacation, Dec. 23 to Jan. 2, inclusive.  
 Semi-Annual Examinations, Jan. 21 to Jan. 29, inclusive.  
 Second Semester begins Feb. 3.  
 Holiday, Washington's Birthday, Feb. 22.  
 Holiday, Easter, March 26 and 27.  
 Final Examinations, May 27 to June 4, inclusive.  
 Holiday, Decoration Day, May 29.  
 Commencement, June 8.

**ESTABLISHED 1914**

*Affiliated with Washington University  
Endorsed by the St. Louis Chamber of Commerce  
Member of the Community Council*

# Central Institute for the Deaf

Saint Louis



## DEPARTMENTS

**Oral School for Deaf Children**  
(Residential and Day Pupils)

**Teachers' Training College**  
(Affiliated with Washington University)

**Lip-Reading for Hard-of-Hearing Children**  
(Residential and Day Pupils)

**Lip-Reading for Deafened Adults**  
(Individual and Class Instruction)

**Classes for Hard-of-Hearing Children**  
(Residential and Day Pupils)

**Correction of Speech Defects**  
(Residential and Day Pupils; Speech Clinics)

**Research Laboratories of Anatomy, Psychology, Phonetics  
and Acoustics**



## HISTORICAL

The CENTRAL INSTITUTE FOR THE DEAF was organized in the Fall of 1914, with an enrollment of three pupils and two teachers. Within one year the enrollment increased to fourteen pupils and three teachers, and four pupil-teachers in the Training School. Lack of space and poor accommodations necessitated a change of quarters and the present site was chosen in the Fall of 1916. The first building was advantageously situated opposite Forest Park where there is ample opportunity for various forms of out-of-doors recreation and easy accessibility from all parts of the city.

In 1923 the improved property on the southeast corner of Kingshighway and Papin street was acquired and with the recently established affiliation of Washington University with our Teachers' Training College the entire building has been remodeled and includes two halls equipped for lectures and laboratory work, business offices, living room and dormitories for teaching staff and college students.

In June, 1929, the new buildings of Central Institute for the Deaf were dedicated, comprising three units: (1) Science Unit, (2) School Unit, (3) Residential Unit, making the entire building and equipment a model of its kind and including as special features Scientific Laboratories, Library, Infirmary, spacious Play Roof, ideal Dormitories, Auditorium-Gymnasium, Recreation Rooms, Domestic Science and Manual Training Equipment.

## PURPOSE

The purpose of the Central Institute for the Deaf is expressed by the following extract from the Charter:

To promote educational measures in the interests of the deaf; to instruct the deaf and the hard-of-hearing child by progressive oral methods; to provide free scholarships for needy deaf children and for normal students; to maintain training classes for teachers; to instruct deaf adults in lip-reading; to correct defects in speech; to establish free educational and prevention clinics for the deaf and for speech correction, to maintain an otologic bureau of information; and to receive and hold devises, bequests and gifts of property and money for use in connection with the aforesaid purposes and to acquire and maintain such real estate, buildings and equipment as may be necessary to carry out said purposes.

## SUPPORT

The CENTRAL INSTITUTE FOR THE DEAF is chartered in the State of Missouri as a philanthropic institution established to operate without profit. Our resources are derived from those of our pupils who can pay the tuition fees and from annual membership subscriptions and special contributions which now maintain more than 50 per cent full or part scholarships. The Board of Trustees regulates the tuition fees to cover only the actual maintenance per pupil.

## **THE ORAL SCHOOL**

The Oral School of the Central Institute for the Deaf provides, for deaf and hard-of-hearing children, the sort of education that will best fit them to take their places in the world of hearing people. The methods are entirely oral; speech and lip-reading are the only means of communication used. The regular work of the schoolroom is supplemented by the practical application of speech and lip-reading in the daily home life of the pupil.

### **PRE-SCHOOL CLASSES**

It is urged that the training of the deaf child be begun at as early an age as possible, so that the flexibility of speech may be conserved and the early years of development utilized.

Central Institute for the Deaf has organized and developed the largest group of pre-school deaf pupils in the world. There are at present over fifty deaf children under instruction, ranging in age from 2½ years to 6 years.

### **DEPARTMENT FOR CORRECTION OF SPEECH DEFECTS**

The Corrective Speech Department of Central Institute is a separate department of the school, under the direct supervision of experts in the teaching of speech and in voice production, and having the closest co-operation of the related departments of the Institute.

Among the many defects brought to us for correction are the more common ones of stuttering, stammering, lisping, lolling, baby-talk, defective phonation, and cleft palate. The causes vary from long continued bad habits of speech to malformation of the vocal machinery. All cases are subject to improvement, and many to permanent correction. In no case can we guarantee a "cure", nor can we foretell the length of time necessary to secure noticeable improvement.

The clinic for correction of defects in speech, established in 1921, is in active operation Wednesday and Saturday of each week and at present serves from forty to fifty pupils each clinic session with individual instruction in all classes of speech correction.

### **HARD-OF-HEARING CHILDREN**

Recent surveys throughout the nation have indicated that nearly three million public school children show some defect in hearing and the hard-of-hearing child is a problem demanding careful study and expert service. C. I. D. has inaugurated special classes for the rehabilitation of this type of handicapped child.

## TEACHERS' TRAINING COLLEGE

On February 16, 1931, official announcement was made of the affiliation of the Teachers' Training College of Central Institute for the Deaf with University College of Washington University.

By virtue of this affiliation the degree of Bachelor of Science in Special Education will be granted to fully qualified graduates of Teachers' Training College of Central Institute for the Deaf who meet the requirements established by the Advisory Board, which will administer this relation on behalf of Washington University.

The course required for this degree is a four-year curriculum. The Freshman and Sophomore years of this curriculum may be taken at Washington University either in the College of Liberal Arts or in University College, or at any University or accredited Junior College which provides the required curriculum. The Junior and Senior years must be taken at the Central Institute for the Deaf, subject to such requirements as may be imposed by the Advisory Board.

A limited number of Scholarships are provided annually by the General Education Board of the Rockefeller Foundation.

### LIP-READING FOR THE DEAFENED ADULT

Courses in lip-reading for the adult deaf may begin at any time from September to June. Special arrangement may be made for courses throughout the summer months.

The Regular Course of instruction consists of forty lessons, which provide for a thorough study of the underlying principles of Lip-Reading. Instruction in this course is given individually at first, but the student is placed, as soon as deemed advisable, in a small group with two or three other students. At least three months instruction is advised to acquire a thorough understanding of the principles of phonetics as applied to lip-reading. This should be followed by practice with various individuals to gain proficiency and assurance.

### TUITION FEES

<b>ORAL SCHOOL</b>	
Resident Pupil, per session (Sept. 15-June 15).....	\$1,250
Day Pupil, per session (Sept. 15-June 15).....	650
<b>LIP-READING FOR ADULTS</b>	
Regular Course of 40 Lessons.....	80
Advanced Conversation Classes.....	10
Private Instruction, per hour.....	3
<b>LIP-READING FOR HARD-OF-HEARING CHILDREN</b>	
Resident Pupil, per session (Sept. 15-June 15).....	1,250
Day Pupil, per session (Sept. 15-June 15).....	650
Private Instruction, per hour.....	3
<b>DEFECTS IN SPEECH</b>	
Resident Pupil, per session (Sept. 15-June 15).....	1,250
Day Pupil, per session (Sept. 15-June 15).....	650
Private Instruction, per hour.....	3
<b>TEACHERS' TRAINING COLLEGE</b>	
Training Course (2 years) (\$200 per annum).....	400
Lip-Reading to Adult Deaf (1 year).....	200

## ADMINISTRATIVE OFFICERS

Dr. Max A. Goldstein, Director

Julia M. Connery, Principal

### BOARD OF MANAGERS

1936

#### OFFICERS

##### HONORARY VICE-PRESIDENTS

MR. AUGUST E. BROOKER  
MRS. HENRY ELLIOT, Jr.  
MRS. EDWARD A. FAUST

MR. BENJAMIN GRATZ  
MRS. JACKSON JOHNSON  
MRS. JOSEPH H. ROBLEE

##### PRESIDENT

MRS. W. W. BOYD, Jr.

##### VICE-PRESIDENTS

MR. EDWIN B. MEISSNER  
MRS. WALLACE RENARD

MRS. C. W. GAYLORD  
MR. H. S. JAMISON

##### TREASURER

MRS. JOHN A. HASKELL

##### ASSISTANT TREASURER

MRS. W. H. OLMSTED

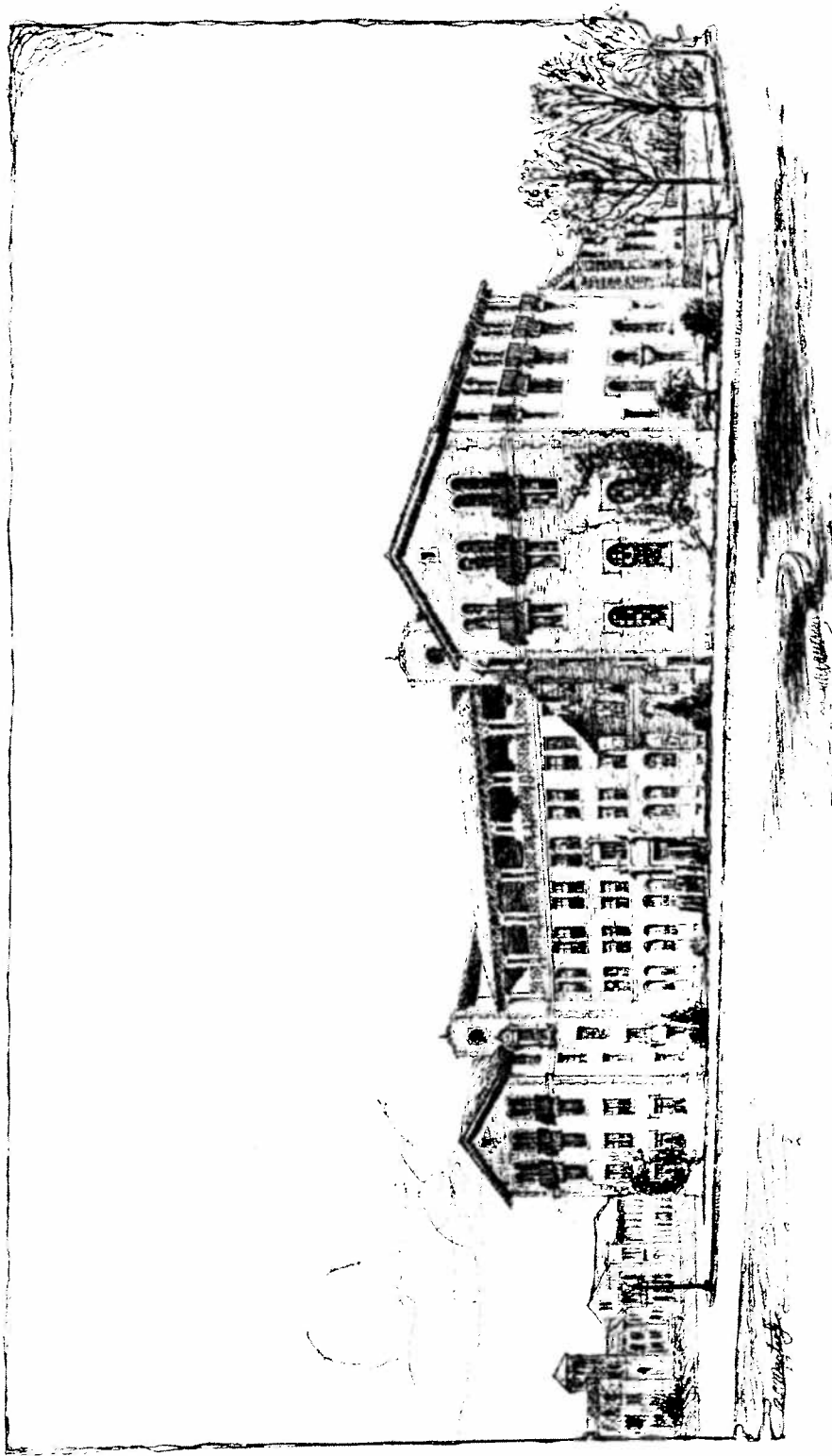
##### SECRETARY

MISS BARBARA COUSLAND

#### MEMBERS OF THE BOARD OF MANAGERS

MRS. ARTHUR M. ALDEN  
MR. CLAXTON ALLEN  
MRS. SIGMOND BAER  
MR. RICHARD BALDWIN  
MRS. PAUL BROWN  
MRS. MORTIMER BURROUGHS  
MR. DAVID CALHOUN, Jr.  
MR. L. W. CHILDRESS  
MRS. S. D. CONANT  
MRS. M. D. CURRAN  
MRS. J. D. DANA  
MR. FRANK M. DEBATIN  
MR. ROY M. EILERS  
MR. A. B. ELIAS  
MRS. M. A. GOLDSTEIN  
MRS. BEN HARRIS  
MRS. P. B. JAMISON  
MR. JAMES LEE JOHNSON  
MRS. OSCAR JOHNSON  
MR. ALBERT M. KELLER  
MRS. HOMER W. KLEIN  
MRS. JOHN S. KLEIN  
MRS. HARRY G. KOERBER  
MRS. JOHN J. LARKIN  
MR. CARL LAWTON  
MR. JOHN S. LEHMANN

MRS. FRANZ LOEWE  
MR. GEORGE C. MACKAY  
MR. LAWRENCE E. MAHAN  
MRS. CARL F. G. MEYER  
MRS. LOUIS MONHEIMER  
MRS. JOHN W. MORRISON  
MR. CHARLES NAGEL  
MR. E. D. NIMS  
MR. GEORGE W. PARKER  
MISS JANE PELTON  
MRS. LEO RASSIEUR, Jr.  
MR. J. SYDNEY SALKEY  
BISHOP WILLIAM SCARLETT  
MISS ALICE SPIEGELHALTER  
MR. I. A. STEVENS  
MRS. CHARLES STIX  
MRS. JOHN B. STRAUCH  
MRS. FRANK H. SULLIVAN  
MRS. R. C. TAYLOR  
MRS. JACOB VAN DYKE  
MRS. BORDEN S. VEEDER  
MR. MAHLON B. WALLACE, Jr.  
MR. CHARLES WIGGINS  
MR. GORDON WILLIS  
MRS. NORMAN C. WOLFF



*New Buildings—Central Institute for the Deaf,  
Clayton Avenue—Kingshighway—Papin Street,  
Opposite Forest Park—Set-car facilities in every direction.*

## LOCATION

Frankfort is a small, attractive summer resort on the west coast of Michigan near Muskegon. It offers one of the best beaches on Lake Michigan with boating, bathing, fishing and excellent woods for rambling and picnics. It is in the heart of Michigan's fruit belt with climate that cannot be surpassed.

All lectures and demonstrations will be presented in the Frankfort Public School, which has been placed at the disposal of our faculty during this period. Living arrangements for teachers attending the course will be made in the private homes of Frankfort residents.

### MILEAGE AND RAILROAD FARE Based on Summer Rates, 1935

From	To Chicago, Ill.	To Frankfort, Mich.
	Mileage	Mileage
Atlanta, Ga.	733	959
Baltimore, Md.	796	851
Boston, Mass.	1033	1034
Buffalo, N. Y.	525	583
Chicago, Ill.		327
Cincinnati, Ohio	285	471
Cleveland, Ohio	357	399
Columbus, Ohio	315	424
Dallas, Tex.	972	1299
Denver, Colo.	1034	1361
Des Moines, Iowa	358	685
Detroit, Mich.	272	284
Indianapolis, Ind.	184	466
Jacksonville, Ill.	216	543
Kansas City, Mo.	451	788
Little Rock, Ark.	633	960
Madison, Wis.	129	456
Memphis, Tenn.	534	861
Milwaukee, Wis.	85	412
Minneapolis, Minn.	408	735
New York, N. Y.	907	932
Omaha, Neb.	488	815
Philadelphia, Pa.	817	901
Pittsburgh, Pa.	468	553
St. Louis, Mo.	284	611
Toledo, Ohio	244	292
Topeka, Kans.	579	906
Washington, D. C.	787	842
Wichita, Kans.	663	990

St. Louis to Frankfort and return, \$30.45.

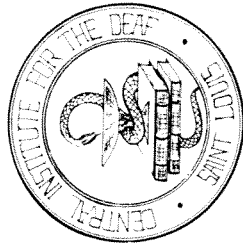
San Francisco—Los Angeles to Chicago, \$83.50. Chicago to Frankfort, \$18.85.

San Francisco—Los Angeles to St. Louis, \$81.50. Detroit to Frankfort, \$15.25.

## Teachers' Training College

of

## CENTRAL INSTITUTE for the DEAF



Affiliated with

WASHINGTON UNIVERSITY

Saint Louis

1936

Summer Session Bulletin

for

Advanced Course for Teachers of the Deaf and Speech Defectives

Given at

FRANKFORT, MICHIGAN

June 29 to August 1, 1936

## Announcement of 1936 Summer Session Advanced Course for Teachers of the Deaf and Speech Defectives

A summer course for teachers, sponsored by the American Association to Promote the Teaching of Speech to the Deaf, was held in co-operation with the University of Toronto in July, 1935.

When the announcement of the course to be given by Central Institute for the Deaf, at Frankfort, Michigan, in 1935 was withdrawn, it was with the understanding that the Association would lend its support for the course now announced for 1936.

Permission has been granted by the authorities of Washington University, of which Central Institute is an individual unit, for this summer session offering an Advanced Training Course.

### DESCRIPTION OF COURSES

#### Pre-school Deaf

JULIA M. CONNERY, *Principal*

History of the Nursery School movement in America and other countries. Development and training of the child from his birth through his fifth year. Record of twenty-five years' study of the pre-school deaf child.

#### Principles and Practice of the Acoustic Method:

MAX A. GOLDSTEIN, M.D., F.A.C.S., *Director*

The Acoustic Method, originated and first introduced at Central Institute for the Deaf, is a form of special pedagogy and applied science of special value in salvaging of residual hearing in deaf children and for speech improvement.

*Definition:* We define the Acoustic Method as:—Stimulation or education of the hearing mechanism and its associated sense-organs by sound vibration as applied either by voice or any sonorous instrument.

This definition is comprehensive enough to include: a. Voice and musical sounds directed through the physiological tract of the ear to the peripheral or central auditory areas; b. Sound vibration as sensed by tactile impression to interpret pitch, rhythm, accent, volume; c. Analysis of speech-sounds by tactile differentiation; d. Synthesis and speech construction by tactile impression; e. Sound waves and their significance as appreciated by optical perception.

Principles and practice of the Acoustic Method with lectures and special demonstrations, on anatomy and physiology of the hearing mechanism, the use of the Audiometer and electrically amplified sound instruments will be presented in this advanced course.

#### Physics of Sound

A. S. HARRIS, PH.D., *Lecturer on Physics*

Presenting a special course in Physics of Sound of interest to teachers of the deaf. Wave motion; elasticity and vibration reflection and refraction; interference; resonance; phonograph and telephone; radio amplifiers and audiometers. Discussion of apparatus used and a direct application of acoustic principles involved in problems of the deaf.

#### Speech Improvement in the Hard-of-Hearing:

FRANCES H. LESTER, B.S., *Lecturer on Lipreading*

A study of defective speech patterns as related to different types of hard-of-hearing children and adults and constructive consideration of remedial measures. Speech Analysis. Speech Correction; Voice Improvement.

A presentation of methods for the development of speech and voice consciousness in association with lipreading for the hard-of-hearing.

#### Neuro-Anatomy

RAFAEL LORENTE DE NO, M.D.

A study of brain topography particularly in speech and hearing centers; action currents and their determination as applied to the physiology of hearing; nystagmus and its significance in the pathology of the labyrinth; the technique of laboratory research and animal experimentation in the presentation of this subject matter.

#### Congenital Aphasia:

MILDRED A. MCGINNIS, B.S., *Teacher-in-Charge Speech Correction Dept.*

A study of aphasia types, their diagnosis and teaching approach for the development of speech and language.

#### Tests and Measurements of the Deaf and Speech Defective Child:

HELEN F. SCHICK, PH.D., *Psychologist*

A study of mental and achievement tests and an interpretation of results when especially applied to deaf and speech defective children; a survey of tests being used at present and a practical evaluation of these measurements for the teacher of the deaf.

Note: Pupil material for demonstrations will be provided for all courses.

### REQUIREMENTS FOR ADMISSION

*Academic:* Any teacher of the deaf or speech defectives who has a total of two years of training and one year of teaching, or one year of training and two years of teaching in this field of special pedagogy, is eligible.

*Physical:* All applicants must have perfect hearing, speech, and sight.

#### Tuition, Fees, and Registration

A fee of \$100.00 per participant will be charged. This fee includes tuition for three courses elected by the applicant, a registration fee at Washington University, and board and lodging for the five weeks at Frankfort, Michigan.

Registration must be completed before March 1st, 1936, by mailing the enclosed application blank to the Registrar at Central Institute for the Deaf.

A \$25.00 deposit is required as soon as the applicant is accepted and the remaining \$75.00 the opening day of school at Frankfort. This deposit will be refunded if the applicant is unable to attend the summer session or if, for any reason, the course is not given.

This course will be given *only* if 150 applicants enroll and are accepted. Registration must be completed early, so that plans for the session can be made at Frankfort.

#### Credits

Two semester hours of credit for each course, with the exception of Physics of Sound and Neuro-anatomy, will be granted by Washington University to qualified participants who satisfactorily complete the courses elected. Physics of Sound and Neuro-anatomy will each be continued for a half of the summer session and will grant one semester hour of credit for each course. Each of the courses listed will meet six times per week for a one hour session daily.

Students may elect courses not in excess of six semester hours credit. Credits will be granted by University College of Washington University and can be transferred and applied toward credit at any university or college.

#### MEETING OF THE SOCIETY OF PROGRESSIVE ORAL ADVOCATES.

Consideration is being given to Frankfort, Michigan, as the next annual meeting place with tentative meeting dates of June 25-27, 1936.