

Washington University School of Medicine

Digital Commons@Becker

---

Open Access Publications

---

2020

## Combination of dasatinib with chemotherapy in previously untreated core binding factor acute myeloid leukemia: CALGB 10801

Guido Marcucci

*City of Hope Comprehensive Cancer Center*

Geoffrey L. Uy

*Washington University School of Medicine in St. Louis*

et al.

Follow this and additional works at: [https://digitalcommons.wustl.edu/open\\_access\\_pubs](https://digitalcommons.wustl.edu/open_access_pubs)

**Please let us know how this document benefits you.**

---

### Recommended Citation

Marcucci, Guido; Uy, Geoffrey L.; and al., et, "Combination of dasatinib with chemotherapy in previously untreated core binding factor acute myeloid leukemia: CALGB 10801." *Blood Advances*. 4, 4. 696 - 705. (2020).

[https://digitalcommons.wustl.edu/open\\_access\\_pubs/9301](https://digitalcommons.wustl.edu/open_access_pubs/9301)

This Open Access Publication is brought to you for free and open access by Digital Commons@Becker. It has been accepted for inclusion in Open Access Publications by an authorized administrator of Digital Commons@Becker. For more information, please contact [vanam@wustl.edu](mailto:vanam@wustl.edu).

# Combination of dasatinib with chemotherapy in previously untreated core binding factor acute myeloid leukemia: CALGB 10801

Guido Marcucci,<sup>1</sup> Susan Geyer,<sup>2</sup> Kristina Laumann,<sup>2</sup> Weiqiang Zhao,<sup>3</sup> Donna Bucci,<sup>3</sup> Geoffrey L. Uy,<sup>4</sup> William Blum,<sup>5</sup> Ann-Kathrin Einfeld,<sup>3</sup> Timothy S. Pardee,<sup>6</sup> Eunice S. Wang,<sup>7</sup> Wendy Stock,<sup>8</sup> Jonathan E. Kolitz,<sup>9</sup> Jessica Kohlschmidt,<sup>2,3</sup> Krzysztof Mrózek,<sup>3</sup> Clara D. Bloomfield,<sup>3</sup> Richard M. Stone,<sup>10</sup> and Richard A. Larson<sup>8</sup>

<sup>1</sup>City of Hope Comprehensive Cancer Center, Duarte, CA; <sup>2</sup>Alliance for Clinical Trials in Oncology Statistics and Data Center, The Ohio State University Comprehensive Cancer Center, Columbus, OH; <sup>3</sup>The Ohio State University Comprehensive Cancer Center, Columbus, OH; <sup>4</sup>Division of Oncology, Washington University, St. Louis, MO; <sup>5</sup>Department of Hematology and Medical Oncology, Winship Cancer Institute, Emory University School of Medicine, Atlanta, GA; <sup>6</sup>Section of Hematology & Oncology, Department of Internal Medicine, Wake Forest University Baptist Medical Center, Winston-Salem, NC; <sup>7</sup>Roswell Park Comprehensive Cancer Center, Buffalo, NY; <sup>8</sup>Section of Hematology/Oncology, Department of Medicine, University of Chicago, Chicago, IL; <sup>9</sup>Monter Cancer Center, Hofstra Northwell School of Medicine, Lake Success, NY; and <sup>10</sup>Department of Medical Oncology, Dana-Farber Cancer Institute, Boston, MA

## Key Points

- The KIT inhibitor dasatinib can be safely added to conventional chemotherapy for CBF AML.
- Chemotherapy plus dasatinib provides excellent outcomes for both younger and older patients with or without *KIT*mut.

Acute myeloid leukemia (AML) with either t(8;21)(q22;q22) or inv(16)(p13q22)/t(16;16)(p13;q22) is referred to as core binding factor (CBF) AML. Although categorized as favorable risk, long-term survival for these patients is only ~50% to 60%. Mutated (mut) or overexpressed *KIT*, a gene encoding a receptor tyrosine kinase, has been found almost exclusively in CBF AML and may increase the risk of disease relapse. We tested the safety and clinical activity of dasatinib, a multi-kinase inhibitor, in combination with chemotherapy. Sixty-one adult patients with AML and CBF fusion transcripts (*RUNX1/RUNX1T1* or *CBFB/MYH11*) were enrolled on Cancer and Leukemia Group B (CALGB) 10801. Patients received cytarabine/daunorubicin induction on days 1 to 7 and oral dasatinib 100 mg/d on days 8 to 21. Upon achieving complete remission, patients received consolidation with high-dose cytarabine followed by dasatinib 100 mg/d on days 6 to 26 for 4 courses, followed by dasatinib 100 mg/d for 12 months. Fifteen (25%) patients were older (aged ≥60 years); 67% were *CBFB/MYH11*-positive, and 19% harbored *KIT*mut. There were no unexpected or dose-limiting toxicities. Fifty-five (90%) patients achieved complete remission. With a median follow-up of 45 months, only 16% have relapsed. The 3-year disease-free survival and overall survival rates were 75% and 77% (79% and 85% for younger patients [aged <60 years], and 60% and 51% for older patients). Patients with *KIT*mut had comparable outcome to those with wild-type *KIT* (3-year rates: disease-free survival, 67% vs 75%; overall survival, 73% vs 76%), thereby raising the question of whether dasatinib may overcome the negative impact of these genetic lesions. CALGB 10801 was registered at [www.clinicaltrials.gov](http://www.clinicaltrials.gov) as #NCT01238211.

## Introduction

In acute myeloid leukemia (AML), t(8;21)(q22;q22) and inv(16)(p13q22)/t(16;16)(p13;q22) [hereafter referred to as t(8;21) and inv(16), respectively] are predictive of a more favorable outcome compared with most other cytogenetic/molecular subtypes, especially in patients receiving consolidation with high-dose cytarabine (HiDAC) after achieving complete remission (CR).<sup>1-3</sup> However, despite being categorized as a favorable cytogenetic risk group, 40% to 50%

of these patients still relapse, underscoring the need for more effective therapeutic approaches.<sup>4-7</sup>

At the molecular level, t(8;21) and inv(16) result in fusion genes (ie, *RUNX1-RUNX1T1* and *CBFB-MYH11*, respectively) that lead to the disruption of the *RUNX1* and *CBFB* genes encoding the subunits of the core binding factor (CBF) complex, a heterodimeric transcription factor involved in the regulation of myeloid hematopoiesis.<sup>8</sup> However, transgenic, knock-in, and transduction *RUNX1-RUNX1T1* and *CBFB-MYH11* mouse models have shown that the fusion genes alone are not sufficient to cause a leukemic phenotype and that additional genetic lesions are necessary for the development of overt leukemia.<sup>9-12</sup>

Recent molecular analyses have identified gene signatures and recurrent gene mutations associated with CBF AML. Mutations in the *KIT* gene have been found in ~25% of CBF AML patients and are among the most frequent recurrent mutations.<sup>13-17</sup> *KIT* is located at chromosome band 4q12 and encodes a predicted 110-kD transmembrane glycoprotein that is a member of the type III receptor tyrosine kinase family. After ligand binding, the receptor dimerizes, becomes phosphorylated, and activates downstream signaling pathways involved in cell proliferation, differentiation, and survival. Ligand-independent activation of *KIT* can be caused by gain-of-function mutations.<sup>9,18</sup> In several studies, but not all, *KIT* mutations have been associated with an inferior outcome in patients with CBF AML, especially in t(8;21) where *KIT* mutations confer a higher risk of relapse.<sup>14-19</sup> In addition, regardless of mutation status, *KIT* is also highly expressed in CBF AML blasts,<sup>20</sup> and in vitro and in vivo models support cooperation of activated *KIT* and CBF fusion proteins to induce and sustain AML growth.<sup>21,22</sup> Therefore, despite some uncertainties regarding the prognostic role of *KIT* mutations and *KIT* overexpression, there is a mechanistic rationale for incorporating *KIT* inhibitors into the treatment of CBF AML.

We report here the results of a prospective clinical trial that tested the feasibility of adding dasatinib, an oral multi-kinase inhibitor with activity on *KIT* and SRC activated proteins,<sup>23</sup> to combination therapy with a previously optimized Cancer and Leukemia Group B (CALGB) cytarabine-daunorubicin/HiDAC-based chemotherapy regimen in patients with CBF AML. The study also assessed the safety and the clinical activity of this approach. CALGB is now part of the Alliance for Clinical Trials in Oncology (Alliance).

## Methods

### Patients

Patients with previously untreated AML according to the World Health Organization classification<sup>24</sup> were eligible for molecular screening for the CBF fusion transcripts *RUNX1-RUNX1T1* or *CBFB-MYH11* in a CALGB/Alliance Molecular Pathology central laboratory. All screened patients signed consent forms in compliance with the Declaration of Helsinki for the Institutional Board Review–approved protocols for molecular screening on CALGB 20202 and for treatment on CALGB 10801 (#NCT01238211). Patient characteristics are summarized in Table 1.

### Molecular screening for CBF fusion transcripts

Patients were centrally screened for the *RUNX1-RUNX1T1* or *CBFB-MYH11* fusion transcripts by reverse transcription polymerase chain reaction (RT-PCR). Bone marrow aspirate samples (or blood

**Table 1. Patient characteristics**

Characteristic	Patients (N = 61)
Male sex, n (%)	31 (51)
Age, median (range), y	51 (20-85)
<b>Race, n (%)</b>	
White	46 (75)
African American	5 (8)
Other	4 (7)
Unknown/not reported	6 (10)
Days from diagnosis to study entry, median (range)	4 (0-11)
<b>CBF results (from RT-PCR screening), n (%)</b>	
<i>RUNX1-RUNX1T1</i>	20 (33)
<i>CBFB-MYH11</i>	41 (67)

with at least 20% circulating blasts) were shipped to the Alliance Leukemia Tissue Bank. Samples were subjected to Ficoll density gradient to collect mononuclear cells, which were resuspended in RPMI 1640 with 20% albumin and submitted to the Alliance Molecular Pathology central laboratory. RNA extraction and RT-PCR assays for *RUNX1-RUNX1T1* or *CBFB-MYH11* were performed as previously reported.<sup>25</sup> The presence of a CBF fusion transcript was confirmed in all RT-PCR–positive samples by using Sanger sequencing–based assays.

### Molecular characterization of *KIT* status

*KIT* mutations and expression analyses were performed as previously reported.<sup>14,18</sup> The median value of *KIT* expression levels measured by using quantitative RT-PCR was employed as a cutoff to define higher vs lower expressers.<sup>20</sup>

### Treatment

Treatment is summarized in the Visual Abstract and Table 2. Patients received induction chemotherapy with cytarabine 200 mg/m<sup>2</sup> per day continuous IV infusion on days 1 to 7, daunorubicin 60 mg/m<sup>2</sup> per day IV bolus on days 1 to 3, and dasatinib (Sprycel, Bristol-Myers Squibb) 100 mg/d orally on days 8 to 21. Patients with residual disease (>5% blasts) in a day 21 marrow aspirate were re-induced with the same doses of cytarabine on days 1 to 5, daunorubicin on days 1 to 3, and dasatinib on days 6 to 19 of re-induction treatment. Patients who achieved CR after 1 or 2 cycles of induction therapy received consolidation with HiDAC 3000 mg/m<sup>2</sup> (if aged <60 years) or 1000 mg/m<sup>2</sup> (if older), given IV over 3 hours every 12 hours on days 1, 3, and 5, and dasatinib 100 mg/d on days 6 to 26 for 4 courses. Patients in CR after consolidation received dasatinib 100 mg daily for 12 months.

### Definition of clinical end points and statistical analysis

The primary end point was safety as assessed by 30-day survival after starting induction therapy. This two-stage phase 2 design provided 90% power to identify a true 30-day survival rate of ≥85% vs the null hypothesis that it is at most 70%. At least 59 evaluable patients were required for this two-stage trial, with an interim analysis after the first 20 evaluable patients. Overall, the regimen would be declared not feasible due to toxicity if ≥14 patients (≥24%) among the first 59 evaluable patients experienced early or

**Table 2. Treatment**

Drug	Dose	Route	Schedule
<b>Induction</b>			
Cytarabine	200 mg/m <sup>2</sup> /d	CIV	Days 1-7
Daunorubicin	60 mg/m <sup>2</sup> /d	IV	Days 1-3
Dasatinib	100 mg/d	Oral	Days 8-21
<b>Consolidation</b>			
Cycle #1, 2, 3, and 4			
HiDAC*	3000 mg/m <sup>2</sup> every 12 h	IV	Days 1,3,5
Dasatinib	100 mg/d	Oral	Days 6-28
<b>Maintenance</b>			
Dasatinib	100 mg/d	Oral	12 (28-d) cycles

CIV, continuous IV infusion.

\*1000 mg/m<sup>2</sup> every 12 hours for patients aged  $\geq 60$  years.

hypoplastic death, and stopped early if  $\geq 6$  hypoplastic deaths were observed in the first 20 patients. Efficacy end points included CR rate with at least 90% power to detect a true rate of  $\geq 90\%$  (vs the null hypothesis that this rate was at most 75%). If  $\geq 50$  ( $\geq 85\%$ ) patients attained a CR, the treatment would be considered promising. These conservative assumptions were based on the limited knowledge available at the time of the study design of the possibly toxic effects of the combination of a KIT inhibitor on the posttreatment recovery of normal hematopoiesis and thus a potentially high risk of early hypoplastic death after induction. Furthermore, the enrolled cohort included older patients with no upper age limit, for whom it was anticipated that treatment-related toxicity could be relatively high given the intensity of the proposed cytotoxic regimen.

Efficacy end points included overall survival (OS) and disease-free survival (DFS). Response and relapse were defined by using previously published criteria.<sup>26</sup> The distributions of OS (time from study entry to death; patients who were alive were censored at the time of their last follow-up evaluation) and DFS (time from documentation of CR to relapse or death; patients who were alive and relapse-free were censored at the time of their last follow-up evaluation or at initiation of subsequent therapy, including allogeneic transplantation) were estimated by using the Kaplan-Meier method. Log-rank statistics were used to compare survival distributions between subsets. Simple descriptive statistics were used to summarize baseline characteristics. Data collection and statistical analyses were conducted by the Alliance Statistics and Data Center. Data quality was ensured by review of data by the Alliance Statistics and Data Center and by the study chairperson following Alliance policies. Toxicity was graded by using the National Cancer Institute's Common Terminology Criteria for Adverse Events version 4.0. The database was locked on 25 October 2016.

## Results

### Patient demographic characteristics and molecular features

Between April 2011 and January 2013, we screened 779 patients newly diagnosed with AML from CALGB/Alliance member institutions for CBF AML by using RT-PCR. The average turnaround time to report the molecular diagnosis of CBF AML was 48 hours. Treatment began within a median of 4 days from collection of the

diagnostic sample and shipment to the CALGB/Alliance central molecular laboratory (interquartile range, 3-5 days). Patients who had an *FLT3* mutation were offered another study.

Sixty-one patients were found positive for *RUNX1-RUNX1T1* or *CBFB-MYH11* and were eligible for the CALGB 10801 trial. All patients (Table 1) were evaluable; of these, 20 and 40 were subsequently confirmed to harbor t(8;21) or inv(16), respectively, according to central review of the results of cytogenetic analyses performed by the CALGB/Alliance–approved institutional laboratories; 1 patient was classified as CBF [inv(16)] based on local diagnosis. Of the 60 patients whose karyotype was centrally reviewed, 32 (53%) had additional cytogenetic abnormalities, which are listed in Table 3. The median age of the treated patients was 51 years (range, 20-85 years); 15 (25%) patients were older (aged  $\geq 60$  years), 31 (51%) were male, 46 (75%) were white, 41 (67%) were *CBFB/MYH11*–positive, and 20 (33%) were *RUNX1/RUNX1T1*–positive. Eleven (19%) of the 57 patients who were molecularly evaluable harbored mutated (mut) *KIT*.

### Toxicity

Of the 61 patients, 4 died while receiving this treatment: 3 during induction (2 were older and had *CBFB/MYH11* and 1 was younger with *RUNX1/RUNX1T1*), and 1 in CR during consolidation (a younger *CBFB/MYH11* patient). Of these 4 deaths, 2 were within 30 days of start of treatment (1 younger, 1 older). Overall, 10 patients had an adverse event resulting in treatment discontinuation (1, 7, and 2 during induction, consolidation, and maintenance, respectively). Ten patients declined to complete the planned treatment (7 during consolidation, and 3 during maintenance), but data for the reasons of these voluntary discontinuations were not consistently reported. "Treatment fatigue" has been reported in other leukemia trials involving prolonged courses of therapy.<sup>27</sup> Among patients who achieved CR and underwent consolidation treatment, the median number of consolidation cycles received was 3 (range, 1-4).

The observed hematologic and nonhematologic adverse events were as expected and similar to those previously reported with this chemotherapy regimen and/or dasatinib. Pleural effusions (four with grade 3 and two with grade 4) and abnormal liver function test results (seven with grade 3 and three with grade 4) possibly related to dasatinib were observed, although other causes such as chemotherapy, infection, or antifungal drugs used during the patient's treatment may have contributed. Sepsis with respiratory and/or multiorgan failure was the cause of death in the 4 patients who died while on protocol treatment.

Fifty-four patients (89%) completed most or all of the planned consolidation therapy. Thirty-two of all enrolled patients (53%) started the maintenance therapy, and 19 (53%) of these completed all 12 monthly cycles. Altogether, 55 (90%), 42 (76%), and 19 (31%) patients completed induction, consolidation, and maintenance, respectively. Allogeneic transplantation was performed in 1 patient during first CR and in 5 others after relapse.

### Outcomes

The 30-day survival rate was 97% (59 of 61; 95% confidence interval [CI], 89-100), with 98% and 93% 30-day survival rates in the younger and older patients, respectively. Fifty-five patients (90%; 95% CI, 80-96) achieved CR: 93% of younger patients and



**Table 3. Additional cytogenetic abnormalities in patients with previously untreated CBF AML**

UPN	Sex	Secondary chromosome abnormality(s)
<b>Patients with t(8;21)</b>		
1	Female	−X
5	Female	−X
48	Female	−X
58	Female	−X
6	Male	−Y
7	Male	−Y
10	Male	−Y
23	Male	−Y
4	Male	del(9)(q13q22)
12	Female	del(9)(q13q22)
47	Male	del(9)(q31q33)
13	Female	−X,del(9)(q13q22)
16	Male	−Y,del(9)(q12q22)
45	Male	−Y,del(9)(q13q22)
34	Male	+4
43	Female	add(5)(q33)
27	Male	+8/del(12)(p12)
11	Female	Tetraploid clone with t(8;21)x2
<b>Patients with inv(16) or t(16;16)</b>		
20	Male	+8
46	Female	+8
8	Female	+8/add(17)(q23)
14	Male	+6,+8,+19,+20,+21,+22
37	Female	t(11;20)(p15;q11.2)/+8,t(11;20)(p15;q11.2)
52	Male	+21/+6,+8,+13,+21/+13,t(13;16)(q14;q24),+20,+21/+13,+21
56	Female	del(7)(q32q36)/+8,+14,+14,+21/+22
42	Male	+6
28	Female	+9
22	Male	+22
33	Female	del(16)(q22q22)/del(16)(q22q22),+22
36	Female	+9,+14,+22
30	Male	del(5)(q15q34)
29	Female	der(1)inv(1)(p13.3q11)del(1)(q41q43),t(4;6)(q34;p12),add(7)(q34),−10,+r,+mar

80% of older patients (Table 4). Six patients failed to achieve CR because of early death ( $n = 3$ ) or refractory disease ( $n = 3$ ). Of these 6 patients, 2 had *RUNX1/RUNX1T1* and 4 had *CBFB/MYH1*. Four patients relapsed during consolidation, five during continuation and one after protocol treatment was discontinued.

With a median follow-up of 45 months for living patients (range, 1.4-60 months), 10 (16%) patients have relapsed (4 with *RUNX1/RUNX1T1* and 6 with *CBFB/MYH1*; 6 younger and 4 older). The 3-year DFS and OS rates were 75% (95% CI, 63-89) and 77% (95% CI, 66-89), respectively, for all patients; 79% (95% CI, 66-94) and 85% (95% CI, 75-97) for younger patients; and 60% (95% CI, 36-100) and 51% (95% CI, 30-85) for older patients (Table 4; Figure 1).

The 3-year DFS and OS rates are shown in Table 4 and Figure 2. For patients with *RUNX1/RUNX1T1*, the 3-year DFS was 71% (95% CI, 50-100) (80% for younger patients), and the 3-year OS was 68% (95% CI, 50-93) (78% for younger patients). For those with *CBFB/MYH1*, the 3-year DFS was 76% (95% CI, 62-93) (78% for younger patients), and the 3-year OS was 81% (95% CI, 68-95) (89% for younger patients). Of note, the seemingly longer DFS than OS in this relatively small study was because 2 patients went on to non-protocol therapies and were therefore censored for DFS but continued to be evaluable for OS.

In a post hoc analysis, we assessed the impact of *KIT*mut or high expression of wild-type (wt) *KIT* (*KIT*wt) on treatment response. The 3-year DFS and OS rates for patients with *KIT*mut compared with *KIT*wt were 67% vs 75% (83% vs 77% for younger patients) and 73% vs 76% (88% vs 84% for younger patients), respectively (Table 5; Figure 3). The 3-year DFS and OS rates for patients with higher vs lower levels of *KIT*wt expression were 82% vs 72% and 75% vs 80%, respectively.

## Discussion

Patients with CBF AML have been classified in a favorable cytogenetic/genetic risk group, but a relatively large subset of these patients is not cured despite optimal dosing of induction and consolidation chemotherapy. Emerging data show that a high frequency of mutations and/or high expression of *KIT* in CBF AML likely result in aberrant tyrosine kinase activity, leukemia cell growth and survival, and treatment resistance. Thus, we hypothesized that pharmacologic inhibition of *KIT* would lead to significant antileukemia activity if combined with an optimized chemotherapy regimen in patients with CBF AML. Dasatinib is a multi-kinase inhibitor that has been shown to inactivate *KIT* at nanomolar concentrations. It has been previously incorporated into relatively intensive chemotherapy regimens in Philadelphia chromosome-positive acute lymphoblastic leukemia.<sup>28</sup> Furthermore, recent mechanistic findings support the potential clinical benefit of *KIT* inhibition in CBF AML.<sup>29</sup> Thus, we elected to conduct a phase 2, open-label, multicenter trial that evaluated the safety and the clinical activity of dasatinib given in combination with cytarabine/daunorubicin induction therapy ("7+3") and HiDAC consolidation therapy, and as a single agent for 1 year of maintenance treatment in patients newly diagnosed with CBF AML.

The rationale for choosing standard-dose cytarabine (200 mg/m<sup>2</sup> by continuous infusion over 7 days) and daunorubicin (60 mg/m<sup>2</sup> IV for 3 days) as induction chemotherapy was based on the high CR rates (~90%) observed in previous CALGB/Alliance trials (ie, CALGB 9621 and CALGB 19808) that used a similar chemotherapy regimen without a kinase inhibitor.<sup>30,31</sup> Furthermore, although daunorubicin 90 mg/m<sup>2</sup> has been shown to be superior to 45 mg/m<sup>2</sup> dosing at least in younger patients,<sup>32</sup> this higher dose had no advantage over 60 mg/m<sup>2</sup>, which had been previously administered safely and effectively to patients with CBF AML.<sup>33,34</sup> For postremission therapy, repetitive courses of HiDAC have been shown to be an optimal treatment of patients with CBF AML.<sup>35-37</sup> The dose of dasatinib (ie, 100 mg daily) was based on previous experience combining dasatinib with chemotherapy.<sup>28</sup> The administration of chemotherapy and dasatinib sequentially rather than concurrently leveraged data supporting potentially synergistic activity of administration of tyrosine kinase inhibitors following chemotherapy<sup>38</sup>; however, whether this is indeed the optimal drug

**Table 4. Clinical results**

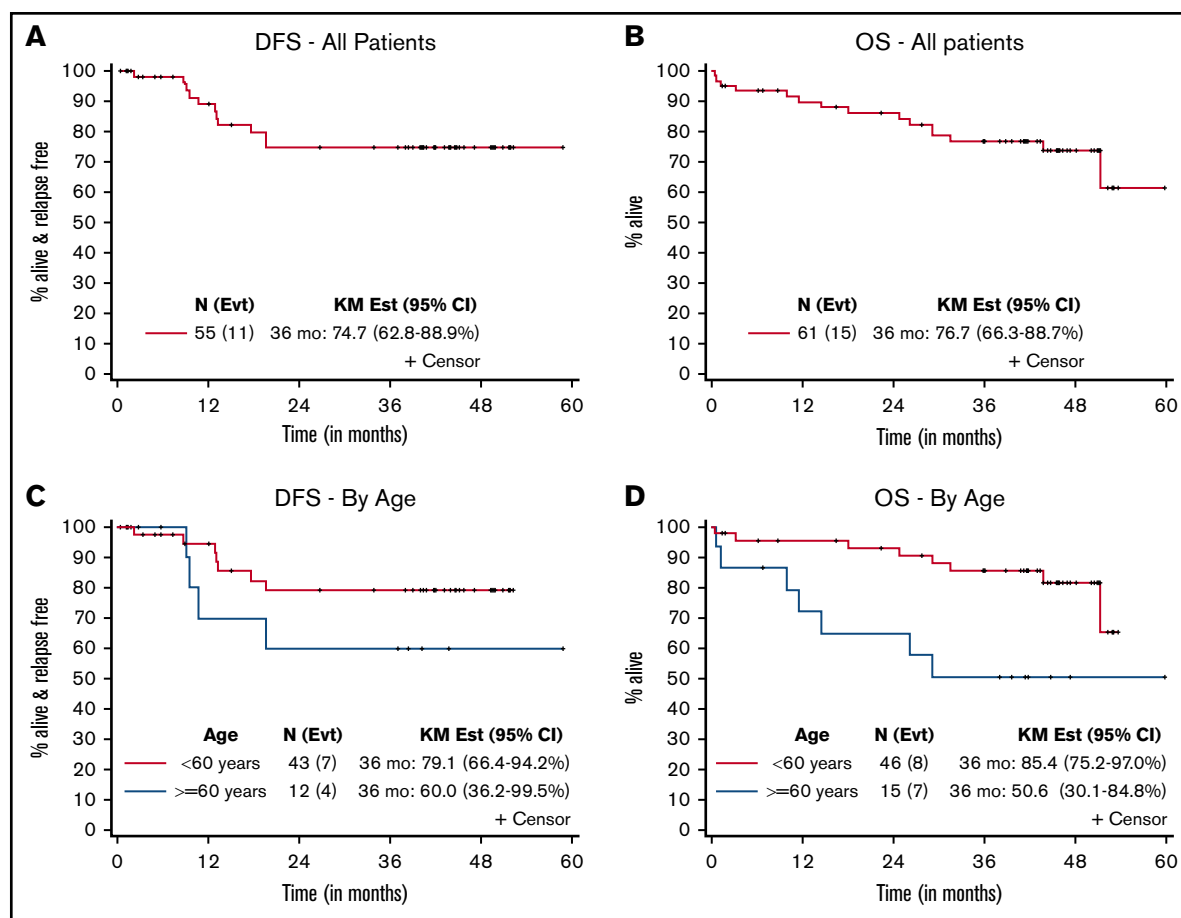
End point	All patients (N = 61)	Younger, <60 y (n = 46)	Older, ≥60 y (n = 15)	<i>RUNX1/RUNX1T1</i> (n = 20)	<i>CBFB/MYH11</i> (n = 40)	<i>RUNX1/RUNX1T1</i> , Younger (n = 15)	<i>CBFB/MYH11</i> , Younger (n = 30)
30 d Survival (95% CI)	97 (89-100)	98 (88-100)	93 (68-100)	95 (75-100)	97.5 (87-100)	93 (68-100)	100 (88-100)
CR	90	93	80	90	90	93	93
36-mo DFS (95% CI)	75 (63-89)	79 (66-94)	60 (36-100)	71 (50-100)	76 (62-93)	80 (58-100)	78 (63-97)
36-mo OS (95% CI)	77 (66-89)	85 (75-97)	51 (30-85)	68 (50-93)	81 (68-95)	78 (59-100)	89 (77-100)

Values are percentages.

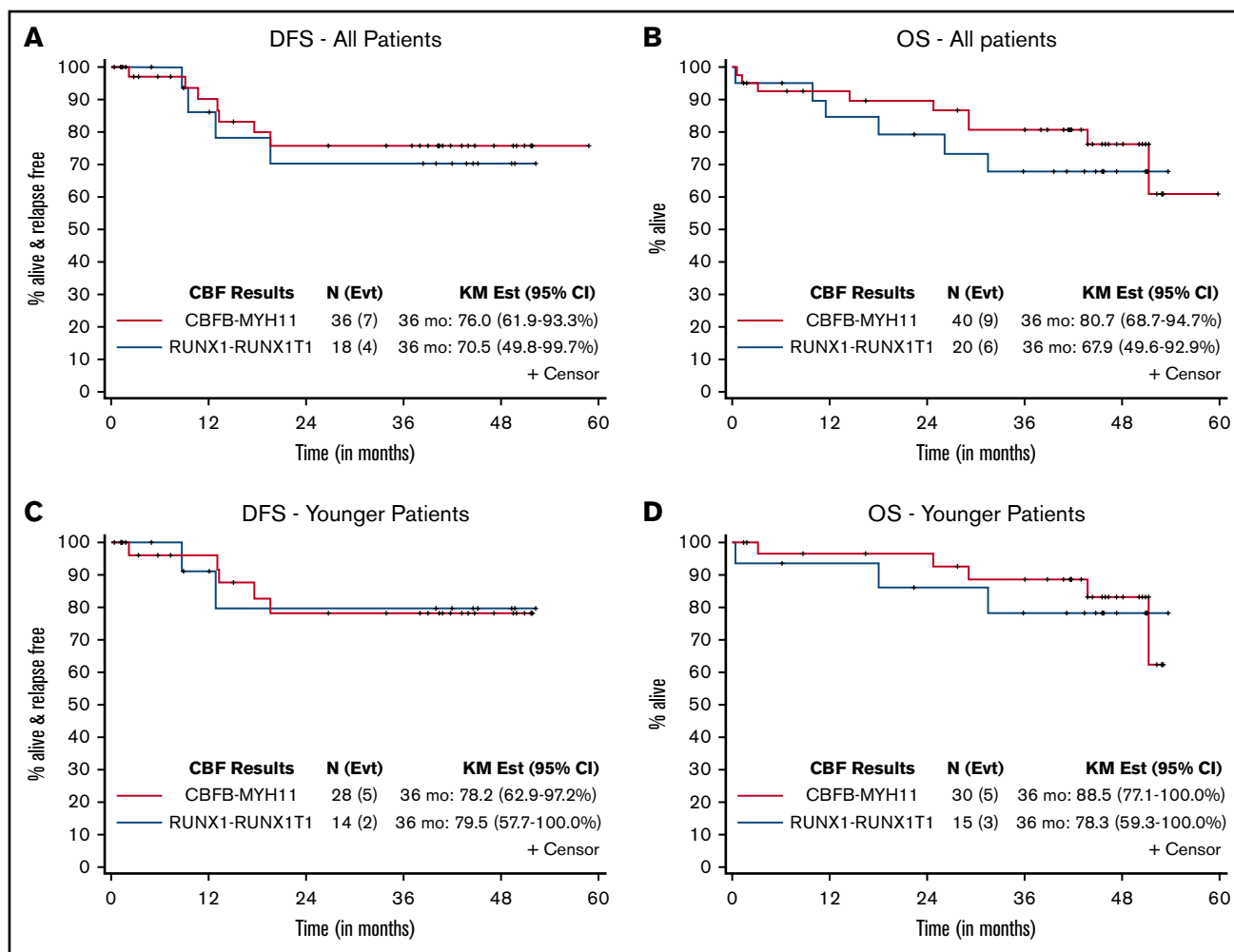
sequence remains to be fully investigated. A maintenance phase of dasatinib as a single agent for an additional 12 months after completion of consolidation chemotherapy was included. Although standard therapy for adults with AML does not routinely involve maintenance treatment, a small but consistent proportion of patients with CBF AML have molecular evidence for persistent minimal residual disease (MRD) following treatment.<sup>39</sup> These patients have an increased risk for later relapse, thereby justifying the prolonged use of dasatinib maintenance.

The main objectives of this feasibility study were achieved. We showed that molecular diagnostic evaluation for CBF AML could be

performed in a central molecular pathology laboratory of an National Cancer Institute–sponsored adult cooperative oncology group with a short turnaround time between sample submission and result reporting (median time of 48 hours). The large pool of patients accessible to a cooperative oncology group allowed complete accrual for this relatively uncommon subset of CBF AML to be achieved in only 22 months, despite the low frequency of this disease (~12% of all AML cases). We showed that the chemotherapy/dasatinib regimen was tolerable in all patients with CBF AML, including older individuals. The CR rate was seemingly equivalent to that reported in previous CALGB/Alliance studies that used cytarabine/anthracycline/HiDAC–based regimens administered



**Figure 1. Disease-free and overall survival.** DFS (A) and OS (B) for all patients. DFS (C) and OS (D) for patients according to age. Outcomes at 36 months were calculated by using the Kaplan-Meier (KM) method.



**Figure 2. Disease-free and overall survival according to CBF fusion transcripts.** DFS (A) and OS (B) for all patients. DFS (C) and OS (D) for younger patients.

Outcomes at 36 months were calculated by using the Kaplan-Meier (KM) method.

without a KIT inhibitor.<sup>30,31</sup> DFS and OS were also seemingly comparable and perhaps superior to those from previous CALGB/Alliance studies. DFS and OS 3-year rates for CBF patients on CALGB 10801 were 79% and 93% in younger patients compared with 41% and 55% for similarly aged CBF patients treated on CALGB 9621, and 56% and 67% for those treated on CALGB 19808. However, although these data provide historical context for the results of CALGB 10801, it is important to underscore that this study was not designed to produce a direct comparison of the current vs historical cohorts of CALGB/Alliance CBF AML patients. Furthermore, although only a minority of CBF patients harbor *FLT3* mutations, and the prognostic impact of these molecular aberrations in CBF AML remains uncertain, Alliance CBF AML patients with *FLT3* mutations were

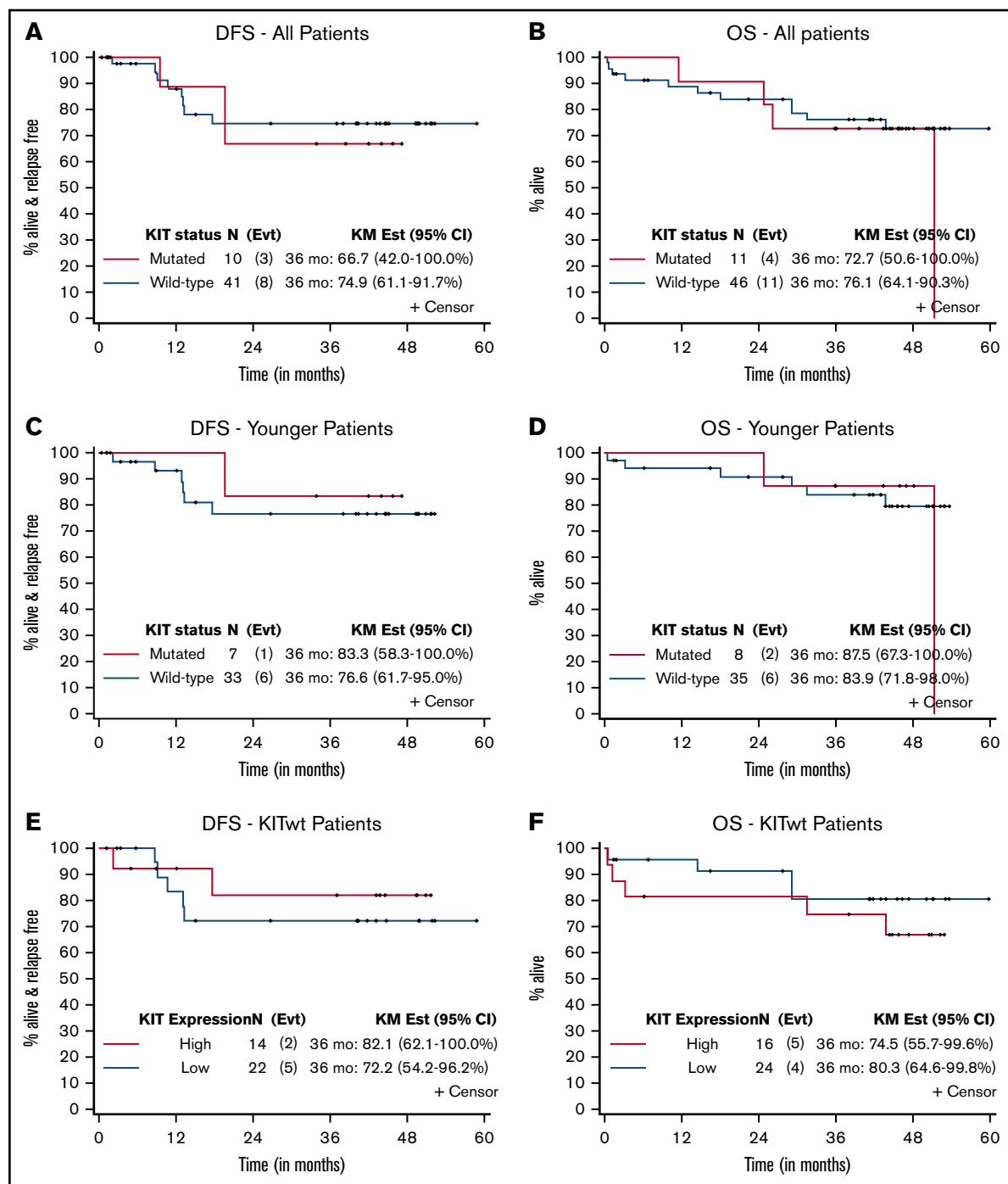
offered another study (ie, CALGB 10603).<sup>40</sup> Thus, it should be noted that patients with CBF AML and *FLT3* mutations were likely underrepresented in CALGB 10801 with respect to CALGB 9621 and CALGB 19808 (no *FLT3* data are available for these 2 protocols). Nevertheless, the prognostic value of *FLT3* mutations in CBF AML remains to be fully elucidated. Thus, these results need to be interpreted cautiously, and they require confirmation in larger, randomized trials.

Older patients enrolled on CALGB 10801 had worse DFS and OS than younger patients although toxicities did not differ markedly. Several factors may be responsible, including age-related biological differences or the lower doses of HiDAC given to older patients

**Table 5. Clinical results according to *KIT* status**

End point	<i>KIT</i> mut (n = 11)	<i>KIT</i> wt (n = 46)	<i>KIT</i> mut, younger (n = 8)	<i>KIT</i> wt, younger (n = 35)	<i>KIT</i> wt/high (>4.67) (n = 16)	<i>KIT</i> wt/low (≤4.67) (n = 24)
CR	91	89	88	94	88	91
36-mo DFS (95% CI)	67 (42-100)	75 (61-92)	83 (58-100)	77 (63-95)	82 (62-100)	72 (54-96)
36-mo OS (95% CI)	73 (51-100)	76 (64-90)	88 (67-100)	84 (72-98)	75 (56-100)	80 (65-100)

Values are percentages.



**Figure 3. Disease-free and overall survival according to *KIT* status.** DFS (A) and OS (B) for all patients (according to *KIT* mutation status). DFS (C) and OS (D) for younger patients (according to *KIT* mutation status). DFS (E) and OS (F) for *KIT*wt patients (according to *KIT* expression level). Outcomes at 36 months were calculated by using the Kaplan-Meier (KM) method.

(1000 mg/m<sup>2</sup> compared with 3000 mg/m<sup>2</sup> given to younger patients). Nevertheless, with DFS and OS rates of 60% and 65% at 2 years, and 60% and 51% at 3 years, respectively, older patients with CBF AML seemingly benefited from the CALGB 10801 combined treatment approach; they had clinical outcomes comparable to those observed for younger patients on the earlier CALGB 9621 and CALGB 19808 trials.

Although the presence of *KIT*mut has been linked to a worse outcome in some, but not all, studies (see also Chen et al<sup>19</sup>), we noted very similar outcomes for those patients with and those without an adverse molecular profile enrolled on CALGB 10801, especially when only the younger patients were considered. Similar considerations applied for patients presenting with higher *KIT*wt expression. However, these were post hoc analyses, and the numbers



of subjects with these molecular features were small; therefore, these results need to be confirmed.

Although the clinical results observed with the dasatinib/chemotherapy combination are encouraging, we recognize that the CALGB 10801 study had some intrinsic limitations to achieve definitive conclusions given the current state of the science. These include the single-arm study design, the relatively small cohort of treated patients, the uncertain role of dasatinib maintenance postchemotherapy (because only 19 patients completed this part of the treatment program), the absence of additional diagnostic studies to define the molecular landscape of each subject's disease at diagnosis and relapse, and the lack of monitoring of molecular aberrations and/or MRD at sequential time points during and after treatment. These end points will be explored in future larger Alliance or Intergroup studies of CBF AML.

Of note, during the preparation of the manuscript, a study using a nearly identical regimen of dasatinib plus chemotherapy in CBF AML was reported by The Akute Myeloische Leukämie-Studiengruppe (AMLSG 11-08).<sup>41</sup> This study accrued 89 patients with results very similar to CALGB 10801. The CR/CR with incomplete hematologic recovery rate was 94%, and the 4-year OS was 74%. However, in an exploratory analysis, the outcomes of *KIT*mut patients ( $n = 19$ ) seemed somewhat inferior to those of *KIT*wt patients. The AMLSG is currently conducting a randomized clinical trial comparing a regimen nearly identical to CALGB 10801 (chemotherapy/dasatinib) vs chemotherapy alone (#NCT02013648), and that study will provide further insights.

Overall, our findings support further evaluation of *KIT* inhibitors in combination with chemotherapy in CBF AML through future larger, prospective randomized trials. Furthermore, additional pharmacodynamics studies that analyze the impact of dasatinib on aberrantly activated *KIT*-dependent pathways are necessary to define and quantify the pharmacologic activity of this agent on CBF AML blasts. However, despite our encouraging results, it is evident that even when dasatinib was added to chemotherapy, not all patients with CBF AML achieved long-term leukemia-free status. Thus, the treatment approach for patients with CBF AML should be further refined with the rational addition of other molecularly targeted agents, such as gemtuzumab ozogamicin, which has recently been reported in combination with chemotherapy to confer a clinical benefit to patients with a favorable or intermediate cytogenetic risk.<sup>42-45</sup> Nevertheless, the goal of achieving cure in nearly all patients with CBF AML seems to be within reach of the next generation of clinical trials. These should incorporate novel study designs that include both clinical and molecular end points (ie, MRD) and possibly early intervention for patients with an impending risk of relapse either during the treatment or while in the posttreatment follow-up phase.

## Acknowledgments

The authors thank patients and their families, collaborators and staff in the CALGB and Alliance member institutions/data center, the CALGB/Alliance Leukemia Tissue Bank, and Donna Bucci.

## References

1. Grimwade D, Mrózek K. Diagnostic and prognostic value of cytogenetics in acute myeloid leukemia. *Hematol Oncol Clin North Am*. 2011;25(6):1135-1161, vii.
2. Döhner H, Estey E, Grimwade D, et al. Diagnosis and management of AML in adults: 2017 ELN recommendations from an international expert panel. *Blood*. 2017;129(4):424-447.
3. Mrózek K, Marcucci G, Nicolet D, et al. Prognostic significance of the European LeukemiaNet standardized system for reporting cytogenetic and molecular alterations in adults with acute myeloid leukemia. *J Clin Oncol*. 2012;30(36):4515-4523.

They acknowledge the important contributions of Meir Wetzler (deceased) to this study. Michael J. Kelly and Samantha Sublett served as protocol coordinators.

This trial was sponsored by the National Cancer Institute Cancer Therapy Evaluation Program. Research reported in this publication was supported by the National Cancer Institute of the National Institutes of Health under award numbers U10CA180821 and U10CA180882 (Alliance for Clinical Trials in Oncology), P30CA033572, U10CA180833, U10CA180836, U10CA180850, U10CA180866, UG1 CA233338, U24 CA196171, and U10CA180867.

The following institutional networks participated in this study (principal investigator and grant numbers in parentheses, as applicable): Dana-Farber/Partners CancerCare LAPS, Boston, MA (Harold Burstein, U10CA180867); Eastern Maine Medical Center Cancer Care, Brewer, ME (Thomas Openshaw); Florida Hospital Orlando, Orlando, FL (Carlos Alemany); Northwell Health NCORP, Lake Success, NY (Daniel Budman, UG1CA189850); The Ohio State University Comprehensive Cancer Center LAPS, Columbus, OH (Claire Verschraegen, U10CA180850); Roswell Park Cancer Institute LAPS, Buffalo, NY (Ellis Levine, U10CA180866); Southeast Clinical Oncology Research Consortium NCORP, Winston-Salem, NC (James Atkins, UG1CA189858); University of Chicago Comprehensive Cancer Center LAPS, Chicago, IL (Hedy Kindler, U10CA180836); University of Maryland/Greenebaum Cancer Center, Baltimore, MD (Dan Zandberg); University of Vermont College of Medicine, Burlington, VT (Steven Ades); Wake Forest University Health Sciences, Winston-Salem, NC (Heidi Klepin); Washington University–Siteman Cancer Center LAPS, Saint Louis, MO (Nancy Bartlett, U10CA180833); and Weill Medical College of Cornell University, New York, NY (Scott Tagawa).

The content is solely the responsibility of the authors and does not necessarily represent the official views of the National Institutes of Health.

## Authorship

Contribution: G.M. and R.A.L. were responsible for study conception and design; G.M., W.Z., D.B., G.L.U., W.B., A.-K.E., T.S.P., E.S.W., W.S., J.E.K., C.D.B., R.M.S., and R.A.L. acquired data; G.M., S.G., K.L., J.K., C.D.B., K.M., and R.A.L. analyzed and interpreted the data; G.M. drafted the manuscript; and all authors reviewed the draft manuscript and approved the final version for submission.

Conflict-of-interest disclosure: The authors declare no competing financial interests.

ORCID profile: R.A.L., 0000-0001-9168-3203.

Correspondence: Guido Marcucci, Gehr Family Center for Leukemia Research, Department of Hematology and Hematopoietic Cell Transplantation, City of Hope Medical Center, 1500 East Duarte Rd, Duarte CA 91010; e-mail: gmarcucci@coh.org.

4. Marcucci G, Mrózek K, Ruppert AS, et al. Prognostic factors and outcome of core binding factor acute myeloid leukemia patients with t(8;21) differ from those of patients with inv(16): a Cancer and Leukemia Group B study. *J Clin Oncol*. 2005;23(24):5705-5717.
5. Appelbaum FR, Kopecky KJ, Tallman MS, et al. The clinical spectrum of adult acute myeloid leukaemia associated with core binding factor translocations. *Br J Haematol*. 2006;135(2):165-173.
6. Schlenk RF, Benner A, Krauter J, et al. Individual patient data-based meta-analysis of patients aged 16 to 60 years with core binding factor acute myeloid leukemia: a survey of the German Acute Myeloid Leukemia Intergroup. *J Clin Oncol*. 2004;22(18):3741-3750.
7. Ustun C, Marcucci G. Emerging diagnostic and therapeutic approaches in core binding factor acute myeloid leukaemia. *Curr Opin Hematol*. 2015;22(2):85-91.
8. Goyama S, Mulloy JC. Molecular pathogenesis of core binding factor leukemia: current knowledge and future prospects. *Int J Hematol*. 2011;94(2):126-133.
9. Yergeau DA, Hetherington CJ, Wang Q, et al. Embryonic lethality and impairment of haematopoiesis in mice heterozygous for an *AML1-ETO* fusion gene. *Nat Genet*. 1997;15(3):303-306.
10. Okuda T, Cai Z, Yang S, et al. Expression of a knocked-in *AML1-ETO* leukemia gene inhibits the establishment of normal definitive hematopoiesis and directly generates dysplastic hematopoietic progenitors. *Blood*. 1998;91(9):3134-3143.
11. Castilla LH, Garrett L, Adya N, et al. The fusion gene *Cbfb-MYH11* blocks myeloid differentiation and predisposes mice to acute myelomonocytic leukaemia. *Nat Genet*. 1999;23(2):144-146.
12. Rowe JM. The increasing genomic complexity of acute myeloid leukemia. *Best Pract Res Clin Haematol*. 2014;27(3-4):209-213.
13. Cairoli R, Beghini A, Grillo G, et al. Prognostic impact of *c-KIT* mutations in core binding factor leukemias: an Italian retrospective study. *Blood*. 2006;107(9):3463-3468.
14. Schnittger S, Kohl TM, Haeflrich T, et al. *KIT*-D816 mutations in *AML1-ETO*-positive AML are associated with impaired event-free and overall survival. *Blood*. 2006;107(5):1791-1799.
15. Paschka P, Marcucci G, Ruppert AS, et al. Adverse prognostic significance of *KIT* mutations in adult acute myeloid leukemia with inv(16) and t(8;21): a Cancer and Leukemia Group B Study. *J Clin Oncol*. 2006;24(24):3904-3911.
16. Pollard JA, Alonzo TA, Gerbing RB, et al. Prevalence and prognostic significance of *KIT* mutations in pediatric patients with core binding factor AML enrolled on serial pediatric cooperative trials for de novo AML. *Blood*. 2010;115(12):2372-2379.
17. Qin Y-Z, Zhu H-H, Jiang Q, et al. Prevalence and prognostic significance of c-KIT mutations in core binding factor acute myeloid leukemia: a comprehensive large-scale study from a single Chinese center. *Leuk Res*. 2014;38(12):1435-1440.
18. Solh M, Yohe S, Weisdorf D, Ustun C. Core-binding factor acute myeloid leukemia: Heterogeneity, monitoring, and therapy. *Am J Hematol*. 2014;89(12):1121-1131.
19. Chen W, Xie H, Wang H, et al. Prognostic significance of *KIT* mutations in core-binding factor acute myeloid leukemia: a systematic review and meta-analysis. *PLoS One*. 2016;11(1):e0146614.
20. Liu S, Wu LC, Pang J, et al. Sp1/NFκB/HDAC/miR-29b regulatory network in KIT-driven myeloid leukemia. *Cancer Cell*. 2010;17(4):333-347.
21. Wang YY, Zhao LJ, Wu CF, et al. C-KIT mutation cooperates with full-length AML1-ETO to induce acute myeloid leukemia in mice. *Proc Natl Acad Sci U S A*. 2011;108(6):2450-2455.
22. Zhao L, Melenhorst JJ, Alemu L, et al. *KIT* with D816 mutations cooperates with *CBFB-MYH11* for leukemogenesis in mice. *Blood*. 2012;119(6):1511-1521.
23. Schittenhelm MM, Shiraga S, Schroeder A, et al. Dasatinib (BMS-354825), a dual SRC/ABL kinase inhibitor, inhibits the kinase activity of wild-type, juxtamembrane, and activation loop mutant KIT isoforms associated with human malignancies. *Cancer Res*. 2006;66(1):473-481.
24. Arber DA, Brunning RD, Le Beau MM, et al. Acute myeloid leukemia with recurrent genetic abnormalities. In: Swerdlow SH, Campo E, Harris NL, et al, eds. WHO Classification of Tumours of Haematopoietic and Lymphoid Tissues. Lyon, France: IARC; 2008:110-123.
25. Mrózek K, Prior TW, Edwards C, et al. Comparison of cytogenetic and molecular genetic detection of t(8;21) and inv(16) in a prospective series of adults with de novo acute myeloid leukemia: a Cancer and Leukemia Group B Study. *J Clin Oncol*. 2001;19(9):2482-2492.
26. Cheson BD, Bennett JM, Kopecky KJ, et al. Revised recommendations of the International Working Group for Diagnosis, Standardization of Response Criteria, Treatment Outcomes, and Reporting Standards for Therapeutic Trials in Acute Myeloid Leukemia [published correction appears in *J Clin Oncol*. 2004;22(3):576]. *J Clin Oncol*. 2003;21(24):4642-4649.
27. Blum W, Sanford BL, Klisovic R, et al; Alliance for Clinical Trials in Oncology. Maintenance therapy with decitabine in younger adults with acute myeloid leukemia in first remission: a phase 2 Cancer and Leukemia Group B Study (CALGB 10503). *Leukemia*. 2017;31(1):34-39.
28. Ravandi F, O'Brien S, Thomas D, et al. First report of phase 2 study of dasatinib with hyper-CVAD for the frontline treatment of patients with Philadelphia chromosome-positive (Ph<sup>+</sup>) acute lymphoblastic leukemia. *Blood*. 2010;116(12):2070-2077.
29. Kampa-Schittenhelm KM, Vogel W, Bonzheim I, et al. Dasatinib overrides the differentiation blockage in a patient with mutant-*KIT* D816V positive CBFβ-MYH11 leukemia. *Oncotarget*. 2018;9(14):11876-11882.
30. Kolitz JE, George SL, Marcucci G, et al; Cancer and Leukemia Group B. P-glycoprotein inhibition using valspodar (PSC-833) does not improve outcomes for patients younger than age 60 years with newly diagnosed acute myeloid leukemia: Cancer and Leukemia Group B study 19808. *Blood*. 2010;116(9):1413-1421.
31. Kolitz JE, George SL, Dodge RK, et al. Dose escalation studies of cytarabine, daunorubicin, and etoposide with and without multidrug resistance modulation with PSC-833 in untreated adults with acute myeloid leukemia younger than 60 years: final induction results of Cancer and Leukemia Group B Study 9621. *J Clin Oncol*. 2004;22(21):4290-4301.

32. Fernandez HF, Sun Z, Yao X, et al. Anthracycline dose intensification in acute myeloid leukemia. *N Engl J Med*. 2009;361(13):1249-1259.
33. Burnett AK, Russell N, Hills RK, et al. A randomized comparison of daunorubicin 90 mg/m<sup>2</sup> vs 60 mg/m<sup>2</sup> in AML induction: results from the UK NCRI AML17 trial in 1206 patients. *Blood*. 2015;125(25):3878-3885.
34. Prebet T, Bertoli S, Delaunay J, et al. Anthracycline dose intensification improves molecular response and outcome of patients treated for core binding factor acute myeloid leukemia. *Haematologica*. 2014;99(10):e185-e187.
35. Bloomfield CD, Lawrence D, Byrd JC, et al. Frequency of prolonged remission duration after high-dose cytarabine intensification in acute myeloid leukemia varies by cytogenetic subtype. *Cancer Res*. 1998;58(18):4173-4179.
36. Byrd JC, Ruppert AS, Mrózek K, et al. Repetitive cycles of high-dose cytarabine benefit patients with acute myeloid leukemia and inv(16)(p13q22) or t(16;16)(p13;q22): results from CALGB 8461. *J Clin Oncol*. 2004;22(6):1087-1094.
37. Byrd JC, Dodge RK, Carroll A, et al. Patients with t(8;21)(q22;q22) and acute myeloid leukemia have superior failure-free and overall survival when repetitive cycles of high-dose cytarabine are administered. *J Clin Oncol*. 1999;17(12):3767-3775.
38. Sato T, Yang X, Knapper S, et al. FLT3 ligand impedes the efficacy of FLT3 inhibitors in vitro and in vivo. *Blood*. 2011;117(12):3286-3293.
39. Duployez N, Willekens C, Marceau-Renaut A, Boudry-Labis E, Preudhomme C. Prognosis and monitoring of core-binding factor acute myeloid leukemia: current and emerging factors. *Expert Rev Hematol*. 2015;8(1):43-56.
40. Stone RM, Mandrekar SJ, Sanford BL, et al. Midostaurin plus chemotherapy for acute myeloid leukemia with a *FLT3* mutation. *N Engl J Med*. 2017;377(5):454-464.
41. Paschka P, Schlenk RF, Weber D, et al. Adding dasatinib to intensive treatment in core-binding factor acute myeloid leukemia—results of the AMLSG 11-08 trial. *Leukemia*. 2018;32(7):1621-1630.
42. Hills RK, Castaigne S, Appelbaum FR, et al. Addition of gemtuzumab ozogamicin to induction chemotherapy in adult patients with acute myeloid leukaemia: a meta-analysis of individual patient data from randomised controlled trials. *Lancet Oncol*. 2014;15(9):986-996.
43. Borthakur G, Cortes JE, Estey EE, et al. Gemtuzumab ozogamicin with fludarabine, cytarabine, and granulocyte colony stimulating factor (FLAG-GO) as front-line regimen in patients with core binding factor acute myelogenous leukemia. *Am J Hematol*. 2014;89(10):964-968.
44. Taksin AL, Legrand O, Raffoux E, et al. High efficacy and safety profile of fractionated doses of Mylotarg as induction therapy in patients with relapsed acute myeloblastic leukemia: a prospective study of the alfa group. *Leukemia*. 2007;21(1):66-71.
45. Appelbaum FR, Bernstein ID. Gemtuzumab ozogamicin for acute myeloid leukemia. *Blood*. 2017;130(22):2373-2376.