

Washington University School of Medicine

Digital Commons@Becker

Open Access Publications

9-3-2020

Local complement activation is associated with primary graft dysfunction after lung transplantation

Hrishikesh S Kulkarni

Washington University School of Medicine in St. Louis

Lina Ma

Washington University School of Medicine in St. Louis

Kaitlyn N Speckhart

Washington University School of Medicine in St. Louis

Tsuyoshi Takahashi

Washington University School of Medicine in St. Louis

Derek E Byers

Washington University School of Medicine in St. Louis

See next page for additional authors

Follow this and additional works at: https://digitalcommons.wustl.edu/open_access_pubs

Please let us know how this document benefits you.

Recommended Citation

Kulkarni, Hrishikesh S; Ma, Lina; Speckhart, Kaitlyn N; Takahashi, Tsuyoshi; Byers, Derek E; Porteous, Mary K; Kalman, Laurel; Hachem, Ramsey R; Rushefski, Melanie; McPhatter, Ja'Nia; Cano, Marlene; Kreisel, Daniel; Mittler, Brigitte; Atkinson, John P; Gelman, Andrew E; and et al, "Local complement activation is associated with primary graft dysfunction after lung transplantation." JCI Insight. 5, 17. e138358 (2020). https://digitalcommons.wustl.edu/open_access_pubs/9599

This Open Access Publication is brought to you for free and open access by Digital Commons@Becker. It has been accepted for inclusion in Open Access Publications by an authorized administrator of Digital Commons@Becker. For more information, please contact vanam@wustl.edu.

Authors

Hrishikesh S Kulkarni, Lina Ma, Kaitlyn N Speckhart, Tsuyoshi Takahashi, Derek E Byers, Mary K Porteous, Laurel Kalman, Ramsey R Hachem, Melanie Rushefski, Ja'Nia McPhatter, Marlene Cano, Daniel Kreisel, Brigitte Mittler, John P Atkinson, Andrew E Gelman, and et al

Local complement activation is associated with primary graft dysfunction after lung transplantation

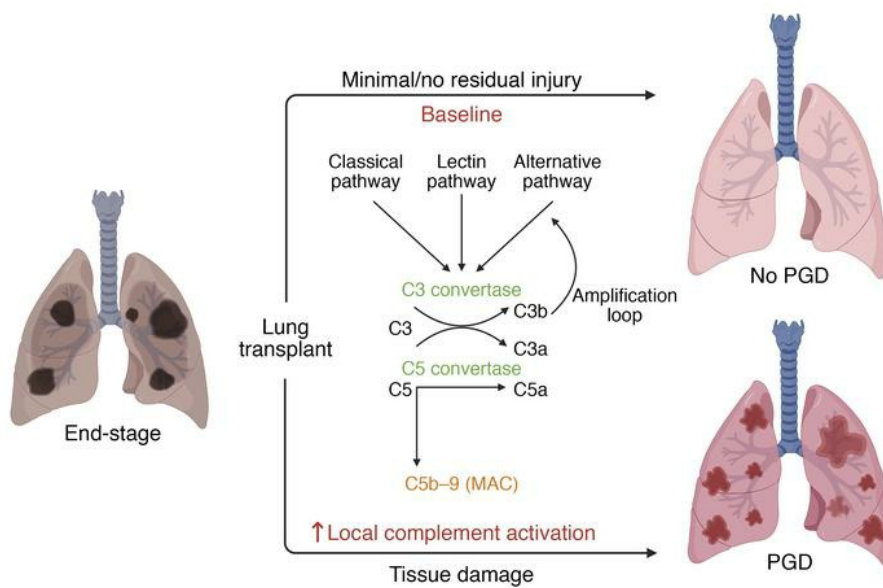
Hrishikesh S. Kulkarni, ... , Andrew E. Gelman, Joshua M. Diamond

JCI Insight. 2020;5(17):e138358. <https://doi.org/10.1172/jci.insight.138358>.

Clinical Medicine

Pulmonology

Graphical abstract



Find the latest version:

<https://jci.me/138358/pdf>



Local complement activation is associated with primary graft dysfunction after lung transplantation

Hrishikesh S. Kulkarni,¹ Kristy Ramphal,² Lina Ma,¹ Melanie Brown,² Michelle Oyster,² Kaitlyn N. Speckhart,³ Tsuyoshi Takahashi,³ Derek E. Byers,¹ Mary K. Porteous,³ Laurel Kalman,³ Ramsey R. Hachem,¹ Melanie Rushefski,³ Ja'Nia McPhatter,¹ Marlene Cano,¹ Daniel Kreisel,³ Masina Scavuzzo,⁴ Brigitte Mittler,¹ Edward Cantu III,⁵ Katrine Pilely,⁶ Peter Garred,⁶ Jason D. Christie,² John P. Atkinson,¹ Andrew E. Gelman,^{3,7} and Joshua M. Diamond²

¹Department of Medicine, Washington University School of Medicine, St. Louis, Missouri, USA. ²Department of Medicine, Perlman School of Medicine at the University of Pennsylvania, Philadelphia, Pennsylvania, USA. ³Department of Surgery, Washington University School of Medicine, St. Louis, Missouri, USA. ⁴Barnes-Jewish Hospital, St. Louis, Missouri, USA.

⁵Department of Surgery, Perlman School of Medicine at the University of Pennsylvania, Philadelphia, Pennsylvania, USA.

⁶Laboratory of Molecular Medicine, Department of Clinical Immunology, Section 7631, Rigshospitalet and Faculty of Health and Medical Sciences, University of Copenhagen, Denmark. ⁷Department of Pathology and Immunology, Washington University School of Medicine, St. Louis, Missouri, USA.

Authorship note: AEG and JMD are co-senior authors.

Conflict of interest: JDC reports grants from GlaxoSmithKline and Bristol-Meyers Squibb and personal fees from Onspira and Magnolia. DK has a pending patent entitled "Compositions and methods for detecting CCR2 receptors" (application 15/611,577). JPA reports serving as a current consultant for CellDex Therapeutics, Clinical Pharmacy Services, Kypha Inc., Achillion Pharmaceuticals, and BioMarin Pharmaceutical and stock or equity options in Compliment Corporation, Kypha Inc., Gemini Therapeutics Inc., and AdMirx Inc.

Copyright: © 2020, Kulkarni et al. This is an open access article published under the terms of the Creative Commons Attribution 4.0 International License.

Submitted: March 23, 2020

Accepted: July 29, 2020

Published: September 3, 2020.

Reference information: *JCI Insight*. 2020;5(17):e138358. <https://doi.org/10.1172/jci.insight.138358>.

BACKGROUND. The complement system plays a key role in host defense but is activated by ischemia/reperfusion injury (IRI). Primary graft dysfunction (PGD) is a form of acute lung injury occurring predominantly due to IRI, which worsens survival after lung transplantation (LTx). Local complement activation is associated with acute lung injury, but whether it is more reflective of allograft injury compared with systemic activation remains unclear. We proposed that local complement activation would help identify those who develop PGD after LTx. We also aimed to identify which complement activation pathways are associated with PGD.

METHODS. We performed a multicenter cohort study at the University of Pennsylvania and Washington University School of Medicine. Bronchoalveolar lavage (BAL) and plasma specimens were obtained from recipients within 24 hours after LTx. PGD was scored based on the consensus definition. Complement activation products and components of each arm of the complement cascade were measured using ELISA.

RESULTS. In both cohorts, sC4d and sC5b-9 levels were increased in BAL of subjects with PGD compared with those without PGD. Subjects with PGD also had higher C1q, C2, C4, and C4b, compared with subjects without PGD, suggesting classical and lectin pathway involvement. Ba levels were higher in subjects with PGD, suggesting alternative pathway activation. Among lectin pathway-specific components, MBL and FCN-3 had a moderate-to-strong correlation with the terminal complement complex in the BAL but not in the plasma.

CONCLUSION. Complement activation fragments are detected in the BAL within 24 hours after LTx. Components of all 3 pathways are locally increased in subjects with PGD. Our findings create a precedent for investigating complement-targeted therapeutics to mitigate PGD.

FUNDING. This research was supported by the NIH, American Lung Association, Children's Discovery Institute, Robert Wood Johnson Foundation, Cystic Fibrosis Foundation, Barnes-Jewish Hospital Foundation, Danish Heart Foundation, Danish Research Foundation of Independent Research, Svend Andersen Research Foundation, and Novo Nordisk Research Foundation.

Introduction

Primary graft dysfunction (PGD), a form of acute lung injury after lung transplantation (LTx) (1, 2), occurs in 25%–30% of patients after lung transplant. This complication leads to an increased duration of mechanical ventilation and hospitalization and an increased risk of bronchiolitis obliterans syndrome

(3, 4). Although the mechanisms driving the development of PGD are not completely understood, ischemia/reperfusion injury (IRI) has been identified as the predominant inciting etiology (5, 6).

IRI initiates PGD by engaging pathways associated with inflammation and innate immune activation (6–9). We previously demonstrated that elevated plasma levels of the innate immune protein long pentraxin-3 (PTX3), produced by macrophages, dendritic cells, and endothelial cells, were associated with PGD in patients with idiopathic pulmonary fibrosis (10). Furthermore, we identified an association between PTX3 single nucleotide polymorphisms and PGD after LTx (11). PTX3 release leads to activation of the complement cascade, which drives an amplification loop of innate immunity that exacerbates inflammation (12, 13). However, whether this activation occurs within the lung or peripherally is currently unknown.

The complement cascade can be activated via 3 distinct pathways: classical, lectin, and alternative (14). The classical pathway is engaged by antigen-antibody complexes as well as by short (i.e., CRP) and long pentraxins (i.e., PTX3). Lectin pathway activation is mediated by surface recognition of carbohydrates on pathogens and injured tissues, such as lectins, ficolins, and collectins (13). Alternative pathway activation constitutively occurs at low levels and is amplified when C3 and factor B engage in a feedback loop to deposit C3b on a target (14). Activation of the complement system amplifies inflammation by generating anaphylatoxins (i.e., C3a, C5a), which increase blood vessel permeability and mediate leukocyte chemotaxis (14). Additionally, complement activation results in formation of membrane attack complexes (C5b-9) on endothelial cells, which have been implicated in acute lung injury (15, 16) as well as end-organ damage in different preclinical thoracic organ transplant models (17). We previously demonstrated that an increase in plasma C5a between 6 and 24 hours after transplantation was associated with severe PGD and an increased risk of death (18). C3d and C4d staining were also observed within 3 months after transplantation in lung allografts of subjects who developed severe PGD (19). Moreover, in a randomized, double-blinded, multicenter trial, prereperfusion administration of TP10 (a drug that reduced complement activation by inactivating the C3 and C5 convertases) decreased the duration of mechanical ventilation after LTx compared with placebo (20). Thus, complement activation appears to play an important role in PGD; however, if markers of complement activation differ in those who develop PGD versus those who do not, which pathways are engaged, and, importantly, whether this activation is systemic or primarily local, remain unanswered.

Here we sought to (a) assess whether markers of complement activation are elevated in the lung and blood compartments early after LTx in subjects with PGD, (b) identify which pathways for complement activation are engaged in these subjects, and (c) determine the relationship between complement activation in the bronchoalveolar lavage (BAL) and that in the systemic circulation.

Results

Demographic characteristics of the cohort. In the Penn cohort ($n = 136$, Table 1 and Figure 1), the incidence of grade 3 PGD (Supplemental Tables 1 and 2; supplemental material available online with this article; <https://doi.org/10.1172/jci.insight.138358DS1>) between 48 and 72 hours was 27.9%, compared with that in the WUSM cohort ($n = 80$, Table 1 and Figure 1), in which it was only 6.3%. As a result, we reported results in those who developed any grade of PGD in the WUSM cohort ($n = 53$, 66.3%) and did subgroup analyses in (a) those who developed any grade of PGD at or after 24 hours ($n = 44$, 55%) and (b) those who developed grade 2 or 3 PGD at any time point ($n = 29$, 36.3%). The distribution of certain key factors, including intraoperative extracorporeal life support (ECLS), were more similar across centers when using these distinct PGD definitions to compare the 2 cohorts (as shown in Table 1).

Complement activation is associated with increased PGD severity within the first 24 hours of LTx. The accumulation of C4d fragments, on tissue or in the fluid phase (as soluble C4d [sC4d]), or both, is a general marker of complement activation (21). In the Penn cohort, BAL concentrations of sC4d were higher in subjects with PGD (545.01 ng/mL) compared with subjects without PGD (243.97 ng/mL) ($P = 0.005$; Figure 2A and Table 2). sC4d levels remained higher in those with grade 2 or 3 PGD versus those with grade 0 or 1 PGD at any time point ($P = 0.0006$; Supplemental Figure 1A and Table 2). Thus, we identified differences in the accumulation of C4d fragments in the BAL of subjects with PGD in the Penn cohort, using 2 distinct definitions of PGD: (a) as normally reported in prior publications (1–4) (grade 3 in the first 48–72 hours) and (b) similar to the outcome definition as the WUSM cohort — grade 2 or 3 PGD at any time point. Additionally, the generation of the terminal complement complex (TCC), measured using BAL sC5b-9 levels, was higher in subjects with PGD (971.5 ng/mL) compared with subjects without PGD (175 ng/mL) ($P = 0.01$; Figure 2B, Supplemental Figure 1B, and Table 2).

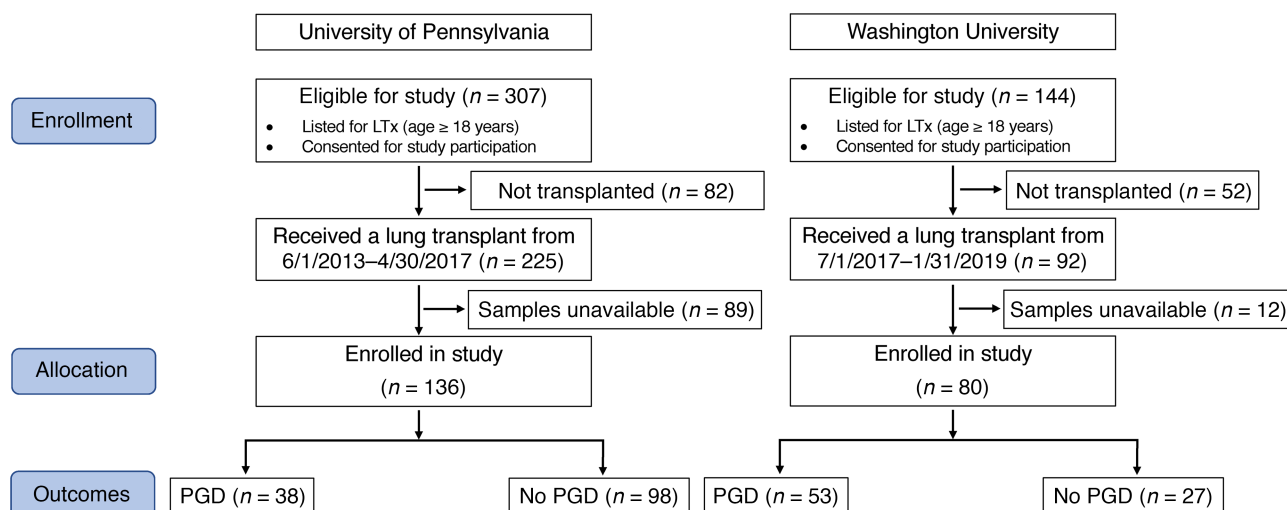


Figure 1. CONSORT flow diagram. CONSORT flow diagram for subjects enrolled in the study at the University of Pennsylvania and Washington University School of Medicine. LTx, lung transplantation; PGD, primary graft dysfunction.

and highly correlated with concurrently measured BAL C4d levels (Spearman's $\rho = 0.79$, $n = 77$, $P < 0.001$). Both BAL sC4d and sC5b-9 levels progressively increased with the grade of PGD severity ($P = 0.0075$ for sC4d, $P = 0.0723$ for sC5b-9; Figure 2, C and D).

We then sought to test the results in a second independent cohort with inherent differences in PGD grades, lesser ECLS use, and later sampling points. Even in the WUSM cohort, median BAL concentrations of sC4d were higher in subjects with PGD (167.9 ng/mL) compared with subjects without PGD (68.82 ng/mL) ($P = 0.011$, Figure 3A and Table 2). Similar to the Penn cohort results, median sC5b-9 levels were higher in subjects with PGD (13.48 ng/mL) compared with subjects without PGD (5.69 ng/mL) ($P = 0.023$, Figure 3B and Table 2). This relationship held true when PGD was restricted to that occurring at or after 24 hours ($P = 0.054$, Supplemental Figure 2A). There was a difference between subjects with grade 2 or 3 PGD versus those with grade 0 or 1 PGD, but this did not reach statistical significance ($P = 0.073$ for sC5b-9, Supplemental Figure 2B and $P = 0.052$ for sC4d, Supplemental Figure 2C). Levels of the central components of the complement cascade, such as C5 and C9, were elevated in the BAL of subjects with PGD, compared with that of subjects without PGD (Supplemental Figure 3, A and B, and Table 3). Additionally, soluble iC3b, which is generated upon complement cascade activation from C3, was elevated in the BAL of subjects with PGD compared with that from subjects without PGD. In particular, iC3b levels were higher in those subjects developing PGD (4822.53 ng/mL) compared with subjects without PGD (1359.67 ng/mL) ($P = 0.006$, Supplemental Figure 3C and Table 3). We also evaluated the iC3b/C3 ratio as a relative measure of complement activation; it was elevated in those subjects developing PGD (125.64 vs. 33.58, $P = 0.009$, Supplemental Figure 3D and Table 3). Finally, levels of BAL sC5b-9 highly correlated with concurrently measured BAL sC4d levels (Spearman's $\rho = 0.694$, $n = 59$, $P < 0.001$) and BAL iC3b levels (Spearman's $\rho = 0.523$, $n = 36$, $P = 0.001$).

Given that ECLS in itself is known to increase complement activation products (22, 23), we analyzed their levels in subjects (from both cohorts) who received ECLS compared with those who did not. In the Penn cohort, the median sC4d levels were comparable (median, interquartile range [IQR, ng/mL]: 365, 201.2–624.8 in those who received ECLS, compared with 241.2: 111–590.1 in those who did not, $P = 0.3$) as were the median sC5b-9 levels (median, IQR, ng/mL: 499, 114–1027 in those who received ECLS, compared with 294, 60–960 in those who did not, $P = 0.5$). These findings were replicated in the WUSM cohort, in which the median C4d levels were comparable (median, IQR, ng/mL: 112.64, 61.32–345.83, in those who received ECLS, compared with 119.73, 67.46–261.39, in those who did not, $P = 0.78$), as were the median sC5b-9 levels (median, IQR, ng/mL: 6.47, 1.19–25.53, in those who received ECLS, compared with 10.05, 1.99–25.44, in those who did not, $P = 0.58$).

PGD severity is associated with the classical/lectin pathways of the complement cascade and activation of the alternative pathway. We then sought to identify which pathways of complement activation were associated with PGD in the WUSM cohort. To this end, we measured C1q (a component of the classical pathway), mannose-binding lectin (MBL, a component of the lectin pathway), and C2 and C4 (components common

Table 1. Demographics of study cohort

	Penn cohort (n = 136)		WUSM cohort (n = 80)	
	PGD (n = 38)	Non-PGD (n = 98)	PGD (n = 53)	Non-PGD (n = 27)
Donor				
Male sex, n (%)	24 (63)	51 (52)	31 (59)	17 (63)
Female sex, n (%)	14 (37)	47 (48)	22 (41)	10 (37)
Age in yr, median (IQR)	37 (15, 66)	36 (16, 72)	31 (21, 46)	32 (21, 46)
Race, n (%)				
White	28 (73.7)	73 (74.5)	43 (81.1)	21 (77.8)
African American	5 (13.2)	17 (17.4)	7 (13.2)	5 (18.5)
Smoking history, yes, n (%)	25 (65.8)	57 (58.2)	32 (61.5)	14 (51.9)
Recipient				
Male sex, n (%)	24 (63.2)	59 (60.2)	30 (56.6)	18 (66.7)
Female sex, n (%)	14 (36.8)	39 (39.8)	23 (43.4)	18 (33.3)
Age in yr, median (IQR)	56 (52, 60)	57 (54, 60)	59 (48, 65)	59 (56, 64)
BMI, median (IQR)	26.4 (24.9, 27.9)	24.9 (24.0, 25.8)	24.4 (19.8, 27.4)	26.9 (24.9, 29.8)
Diagnosis, n (%)				
COPD	7 (18.4)	25 (25.5)	15 (28.3)	12 (44.4)
Interstitial lung disease	18 (47.4)	55 (56.1)	20 (37.7)	13 (48.1)
Cystic fibrosis	3 (7.9)	10 (10.2)	11 (20.8)	0 (0.0)
Other	10 (26.3)	8 (8.2)	7 (13.2)	2 (7.4)
MPAP, median (IQR)	33 (10, 92)	29 (11, 70)	30 (24, 33)	28 (24, 35)
Race, n (%)				
White	31 (81.6)	88 (89.8)	23 (85.2)	53 (100)
African American	6 (15.8)	5 (5.1)	4 (14.8)	0 (0.0)
Operative				
Ischemic time, min, median (IQR)	272.8 (228.2, 317.3)	264.0 (241.3, 286.8)	293.5 (263.5, 338.8)	304.0 (229.5, 322)
Single lung transplant, n (%)	10 (26.3)	38 (38.8)	0 (0.0)	1 (3.7)
ECLS use, yes, n (%)	17 (55.3)	38 (38.8)	29 (54.7)	8 (29.6)
Units of PRBC transfused during LTx, median (range)	3 (0-7)	1 (0-17)	3 (0-21)	0 (0-11)

BMI, body mass index; COPD, chronic obstructive pulmonary disease; ECLS, extracorporeal life support; LTx, lung transplant; MPAP, mean pulmonary arterial pressure; PGD, primary graft dysfunction; PRBC, packed red blood cells; RHC, right heart catheterization. Numbers in brackets represent proportion of the column for categorical variables. Continuous variables are represented as median (interquartile range [IQR]), except for transfusion, where the entire range was provided. ^aNote that the definitions for PGD were different between the 2 cohorts, as described in the Methods.

to both the classical and lectin pathways), as well as factor B and factor D (components of the alternative pathway). We also measured C4b, which is cleaved from C4, pointing to classical and/or lectin pathway activation, and Ba, which is cleaved from factor B, indicating alternative pathway activation.

We found that the median levels of C1q, C2, and C4 in the BAL were all elevated in subjects with PGD as compared with those without PGD (Figure 4, A–C, and Table 3). Additionally, median C4b levels were also elevated in the BAL of those subjects with PGD (139.59 ng/mL) compared with those without PGD (67.49 ng/mL), suggesting activation of both the classical and lectin pathways, not just an increase in their individual components ($P = 0.002$, Figure 4D and Table 3). Median MBL levels were also elevated in subjects with PGD (2.3 ng/mL) compared with subjects without PGD (1.08 ng/mL, $P = 0.012$ for PGD vs. subjects without PGD, Figure 4E and Table 3). Although we noted no differences in the absolute levels of factor B among those subjects who developed PGD as compared with those who did not develop PGD (Supplemental Figure 4A), the median levels of Ba were significantly elevated in these subjects (Figure 4F and Table 3), and the levels of factor D demonstrated a trend toward significance (Supplemental Figure 4B and Table 3). Taken collectively, our findings suggest that not only are individual analytes belonging to the classical and lectin pathways of the complement cascade higher among subjects with PGD, but analytes indicating alternative pathway activation are also elevated in these subjects.

Local markers of lectin pathway engagement distinguish subjects with PGD. Given the considerable variability in MBL levels in humans (24), we first quantified MBL in the BAL using a different assay and, second, did a comprehensive assessment of lectin pathway analytes in both the BAL and plasma levels in the WUSM cohort.

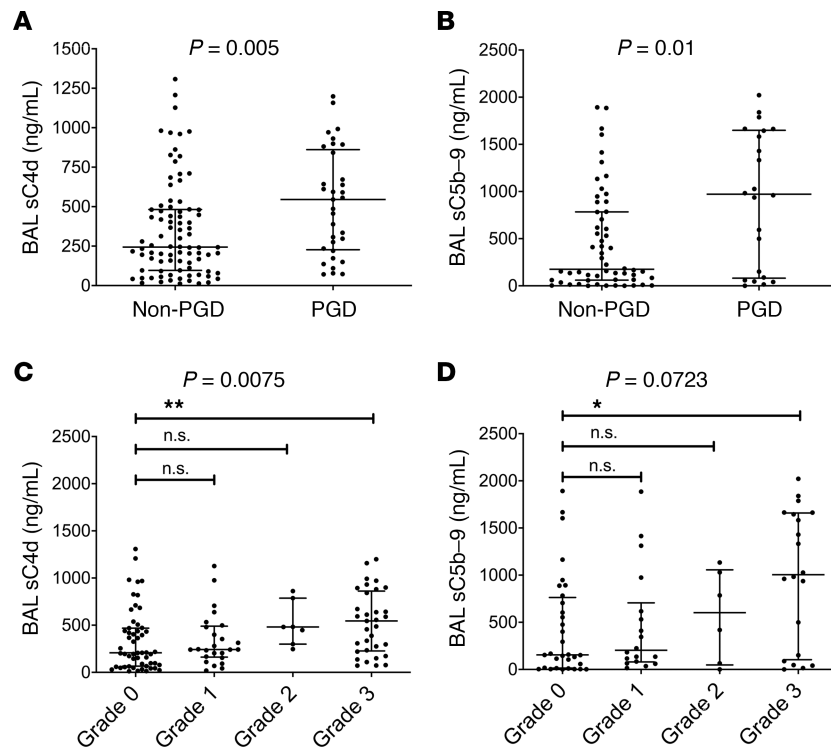


Figure 2. Complement activation is associated with increased PGD severity. Levels of sC4d (A) and sC5b-9 (B) in subjects who developed PGD compared with those who did not. Graphs in C and D demonstrate that the values of both sC4d and sC5b-9 increased as the PGD severity worsened. $^{**}P < 0.01$ for grade 3 PGD vs. grade 0 PGD for sC4d, $^{*}P < 0.05$ for sC5b-9; Mann-Whitney *U* test for A and B and Kruskal-Wallis test after adjusting for multiple comparisons (Dunn's multiple comparisons test) for C and D. Penn cohort, $n = 136$.

We evaluated the association of these analytes with an independent marker of complement activation in both BAL and plasma, C4c, and validated it using a separate assay for sC5b-9 distinct from what we had used previously (termed TCC to semantically distinguish it from the prior assay). We found that BAL MBL levels highly correlated with markers of complement activation in the BAL (Spearman's $\rho = 0.637$ with TCC, Table 4 and Figure 5A, Spearman's $\rho = 0.586$ with C4c, Table 4 and Supplemental Figure 5A, both $P < 0.001$). Subjects with PGD had higher BAL MBL levels compared with those who did not develop PGD (Figure 5C and Supplemental Table 4). Additionally, in a subgroup analysis of those subjects who developed PGD at or after 24 hours, BAL MBL levels remained elevated in subjects who developed PGD compared with those who did not develop PGD (0.667 vs. 0.00, $P = 0.048$, Figure 5D).

Next, we probed for different proteins that engage with the lectin pathway. Among the ficolins, we found that BAL ficolin-3 (FCN-3) levels at 24 hours strongly correlated with markers of complement activation in the BAL (Spearman's $\rho = 0.703$ with TCC, Table 4 and Figure 5B, Spearman's $\rho = 0.679$ with C4c, Table 4 and Supplemental Figure 5B, both $P < 0.001$). Despite these differences in local complement activation products in LTx, there was minimal-to-no correlation between BAL TCC levels and plasma levels of TCC, C4c, or the other markers of lectin pathway engagement, nor were there any differences in the absolute levels (Supplemental Tables 5 and 6). There was also no correlation between the BAL levels of TCC and FCN-1 or FCN-2 (Table 4). These observations suggest that specific markers of the lectin pathway in the BAL highly correlate with evidence of local complement activation.

Given that (a) there is a known association between plasma PTX3 levels and PGD in lung transplant recipients (10) and (b) PTX3 is associated with activation of both the classical/lectin pathways of the complement system (13), we further asked if PTX3 levels were associated with either circulating or local markers of complement activation in these subjects. In the Penn cohort, there was a modest positive correlation between BAL PTX3 levels with concurrently measured BAL sC4d levels (Spearman's $\rho = 0.393$, $P < 0.001$, Figure 6A). This relationship also held true in the WUSM cohort, in which we used independent assays. We found a modest correlation between BAL PTX3 levels and markers of complement activation

Table 2. Markers of complement activation in bronchoalveolar lavage fluid of subjects with and without PGD in the first 24 hours of lung transplant

Penn cohort			
	Non-PGD (n = 86)	PGD (n = 33)	P ^A
sC4d	243.97 (96.58–481.88)	545.01 (227.49–861.61)	0.005
sC5b-9 ^B	175.00 (61–784.5)	971.5 (80.75–1649.5)	0.01
WUSM cohort			
	Non-PGD (n = 27)	PGD (n = 53)	P ^A
sC4d ^C	68.82 (51.96–116.59)	167.9 (82.95–369.63)	0.011
sC5b-9	5.69 (0.93–11.49)	13.48 (2.94–31.76)	0.023

Values are expressed in ng/mL as median (interquartile range). ^ARank sum test. ^BsC5b-9 measurements in the University of Pennsylvania (Penn) cohort were done in 56 subjects without PGD and 22 subjects with PGD. ^CsC4d measurements in the Washington University School of Medicine (WUSM) cohort were done in 14 subjects without PGD and 45 subjects with PGD. Note that the definitions for PGD were different between the 2 cohorts, as described in the Methods.

(Spearman's rho = 0.312 with TCC, Figure 6B, Spearman's rho = 0.386 with C4c, Figure 6C, both $P < 0.05$) in the WUSM cohort, despite there being no correlation between plasma PTX3 levels and markers of complement activation (Spearman's rho = -0.034) within 24 hours after LTx (Supplemental Table 5). Finally, there were also no differences in the median values of BAL PTX3 in subjects with PGD (15.18 ng/mL, $n = 31$) and subjects without PGD (12.99 ng/mL, $n = 81$) in the Penn cohort ($P = 0.4$, Supplemental Figure 6). These observations suggest there are components of the lectin pathway, other than PTX3, that better correlate with markers of complement activation and distinguish those subjects with PGD.

Discussion

While the role of complement activation in acute lung injury has been evaluated in both experimental (16) and clinical settings (25, 26), its role in lung allograft injury is only beginning to be explored (27, 28). While targeting the complement cascade has been successful in certain preclinical models (29–31), follow-up studies have been met with tempered enthusiasm, despite moderate success in clinical trials (20, 32). This is likely due to a lack of data regarding (a) whether the complement cascade is actually being activated, as determined by formation of the membrane attack complex (vs. detecting anaphylatoxins generated by serine proteases i.e., elastase), (b) at what time point after LTx it is activated, and (c) if this activation occurs in the lungs. Additionally, we do not know which pathways to target, given that the complement cascade can be activated via multiple routes. For example, C1-esterase inhibitor — the therapeutic that has shown the most promise in human lung transplant recipients (32) — has multiple targets, including several that extend beyond inhibiting complement activation (33). Hence, given the increasing data on the role of complement activation in human LTx (18, 19), answering the above-mentioned questions is critical before developing targeted therapeutics for mitigating PGD.

Using 2 independent cohorts, we demonstrated that complement activation occurs primarily in the lungs (assessed using BAL fluid), as compared with that detected in the circulation of subjects with PGD within the first 24 hours after LTx. We demonstrated the specificity of this activation using soluble C5b-9 (sC5b-9), which is reflective of the membrane attack complex or TCC being formed due to complement cascade activation. We also identified complement activation using multiple independent markers (i.e., iC3b, C4b, C4d). Using a panel of analytes to differentiate components of the classical, lectin, and alternative pathways, we showed that C4 (as well as C4b, indicating cleavage of C4), C1q, and MBL are higher in subjects with PGD compared with those without PGD, as are Ba levels, suggesting alternative pathway activation. We also detected higher levels of C2 in the BAL of subjects with PGD, and alveolar epithelial cells are a known source of C2 production (14). These findings show complement activation within grafts damaged by IRI is primarily occurring through classical and/or lectin pathway activation but likely amplified by the alternative pathway (34, 35). We also used 2 independent measures of MBL levels in the BAL of LTx recipients to further validate our findings.

These findings prompt the question of what could be activating the classical or lectin pathway in subjects with PGD. The classical pathway is primarily activated by immune complexes comprising antigens bound to specific antibodies that can fix C1q, resulting in formation of the C1 complex (36).

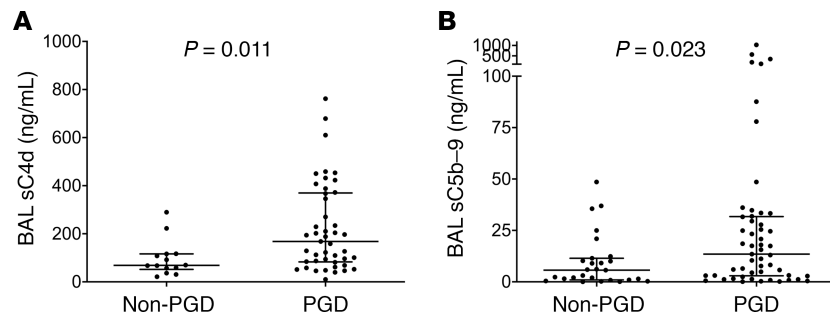


Figure 3. Complement activation is associated with increased PGD severity within the first 24 hours of lung transplantation. Levels of sC4d (A) and sC5b-9 (B) were elevated in subjects who developed PGD compared with those who did not. Note that there were inherent differences in clinical practices at the 2 centers, including the variability in the volume of fluid instilled into the lung, as well as the return, which partially explain the differences in the levels of sC4d and sC5b-9 when compared with Figure 2. Rank sum tests of comparison (Mann-Whitney *U* test). WUSM cohort, *n* = 80.

Formation of this complex activates the serine protease C1s, which can then trigger a cascade involving the sequential cleavage of C4, followed by C2, then C3, and C5, eventually resulting in the formation of C5b-9 on the target surface. However, C1 also binds to C-reactive protein and PTX3, among other acute-phase reactants (37). Moreover, different lectins bind to the surface of carbohydrates to activate MBL/ficolin/collectin-associated serine proteases (MASPs), which are enzymes that can attach to substrates such as MBL and facilitate C2 and C4 cleavage (38). Additionally, FCN-3, which forms a substrate for binding to MASPs (39–41), was highly correlated with markers of complement activation in the WUSM cohort. FCN-3 is synthesized in the liver and bile ducts but also in the lungs (42). Additionally, tissue-specific recruitment of FCN-3 to the lungs has been reported in the context of LPS-mediated acute lung injury in humans (43). These observations led us to consider the possibility that increased airway accumulation of these proteins after IRI may be triggering local complement cascade activation in the lungs via the lectin pathway.

Although PTX3 has been associated with IRI in other model systems (44) and is a known activator of the complement cascade (12, 13), it has remained unclear if its accumulation correlates with markers of complement activation. Interestingly, the association of PTX3 with markers of complement activation in the BAL was modest and, unlike MBL, was not different in those subjects with and without PGD.

Table 3. Components of the complement cascade in bronchoalveolar lavage fluid of subjects with and without PGD within first 24 hours of lung transplant (WUSM)

	Non-PGD (<i>n</i> = 27)	PGD (<i>n</i> = 46)	<i>P</i> ^A
C1q ^{B,C}	27.60 (19.55–38.34)	45.40 (32.32–67.53)	0.039
C2 ^C	94.29 (69.24–197.95)	207.47 (96.19–401.88)	0.009
C4 ^{B,C}	73.62 (44.0–99.11)	147.21 (102.07–229.41)	0.004
C4b ^{B,C}	67.49 (18.61–119.03)	139.59 (83.80–236.26)	0.002
MBL ^{B,C}	1.08 (0.56–2.33)	2.3 (1.48–9.21)	0.012
Factor B	26.3 (22.41–53.89)	45.6 (25.43–60.08)	0.371
Ba ^C	52.86 (37.3–81.4)	73.56 (51.36–161.46)	0.024
Factor D	8.39 (5.00–16.52)	13.47 (6.79–17.30)	0.089
C3	28.79 (16.90–46.43)	39.59 (21.54–52.28)	0.265
iC3b ^{B,C}	1359.67 (497.21–2508.71)	4822.53 (2875.27–15524.85)	0.006
iC3b: C3 ^{B,C}	33.58 (18.36–87.33)	125.64 (68.96–479.46)	0.009
C5	211.39 (116.97–392.8)	364.59 (169.8–624.59)	0.023
C9 ^{B,C}	34.05 (34.05–46.17)	85.81 (44.15–123.29)	0.005

BL, mannose-binding lectin. Values are expressed in ng/mL as median (interquartile range). Components of kit 2 (C1q, C4, factor B, iC3b, C3, and C9) were measured in a subset of subjects with PGD (*n* = 27) and without PGD (*n* = 9).

^ARank sum test. ^B*P* < 0.05 even when PGD was redefined as occurring at or after 24 hours (non-PGD [*n* = 35], PGD [*n* = 38]).

^C*P* < 0.05 even when PGD was restricted to grade 2 or 3 PGD (non-PGD [*n* = 49], PGD [*n* = 24]).

Table 4. Correlation of lectin pathway components with markers of complement activation in bronchoalveolar lavage fluid within first 24 hours of lung transplant (WUSM)

	C4c		TCC (sC5b-9)	
	Correlation	P	Correlation	P
MBL	0.586	<0.001	0.637	<0.001
PTX3	0.361	0.022	0.318	0.045
FCN-1	0.078	0.632	0.109	0.505
FCN-2	0.250	0.120	0.309	0.052
FCN-3	0.679	<0.001	0.703	<0.001
C4c	–	–	0.709	<0.001

FCN-1, ficolin-1; FCN-2, ficolin-2; FCN-3, ficolin-3; MBL, mannose-binding lectin; PTX3, long pentraxin 3; TCC, terminal complement complex. Correlation coefficient was determined using Spearman's rho ($n = 40$)

Moreover, this correlation, being primarily observed in the BAL and not in the plasma in subjects with PGD, suggests that activated complement products are concentrated to sites of injury. Our data are consistent with our previous findings in patients with other forms of pulmonary inflammation in which the complement system is implicated, such as antibody-mediated rejection of the lung (28). Additionally, our observations create a precedent for evaluating how intragraft MBL activation in the setting of PGD could trigger chronic lung allograft dysfunction (CLAD). MBL localizes to the endothelium and basement membrane during cold ischemia and obliterative bronchiolitis (45). On the other hand, low MBL levels in the airway have also been associated with CLAD, presumably through decreased efferocytosis (46). Thus, testing if modulating the lectin pathway early after IRI reduces CLAD in experimental models of LTx may potentially lead to a more targeted therapeutic approach in reducing PGD.

Our study has several limitations. First, there was a considerable difference in the overall incidence of PGD between the 2 cohorts, likely driven by differences in the patient populations at the 2 centers. This has been previously reported in multicenter studies, wherein the range of severe PGD ranged from 2%–27% (47). However, the relationship between complement activation and PGD held true when restricting the analysis to PGD occurring after 24 hours and those having grade 2 or 3 PGD. Second, our sample size was small. A larger sample size of patients within our selected date range could not be gathered due to limits in the availability of concurrent plasma and BAL samples. Nevertheless, our sample size is consistent with other reported biomarker experiments in LTx (48–50). Third, we did not test for all the different MASPs, which would have provided additional specificity for the proteases that facilitate lectin pathway activation. Fourth, most studies using BAL bring into question whether the fluid is contaminated by blood/plasma, especially in the setting of an acute inflammatory process such as PGD. However, adjusting for permeability remains unreliable in human studies (51, 52). Additionally, the fact that there was no difference in these markers of activation in the plasma of subjects with and without PGD would suggest that these differences are specific to the BAL, not simply a measure of increased permeability. Fifth, there were inherent differences in clinical practices at the 2 centers, including the variability in the volume of fluid instilled into the lung as well as the return. However, in spite of these differences, the relationship between local complement activation and PGD was still evident in both cohorts, providing further support for our overall findings. Finally, in accordance with other studies, we cannot state a definitive relationship between higher BAL markers of complement activation and the increased PGD risk; rather, we can only describe the association between the 2 factors.

We conclude that there are marked differences between local and systemic complement activation in subjects who develop PGD. This difference was most evident in the local accumulation of not only the classical and lectin pathway components, but also activation fragments of the alternative pathway. MBL appears to be the most prominent marker of lectin pathway activation in subjects with PGD. Additionally, elevated levels of FCN-3 in the BAL highly correlate with markers of complement activation. Future studies will involve exploring the relationship between lung-specific and systemic innate immune activation and local targeting of the lectin pathway in experimental lung transplant models as a potential therapeutic avenue for reducing PGD incidence in patients with LTx.

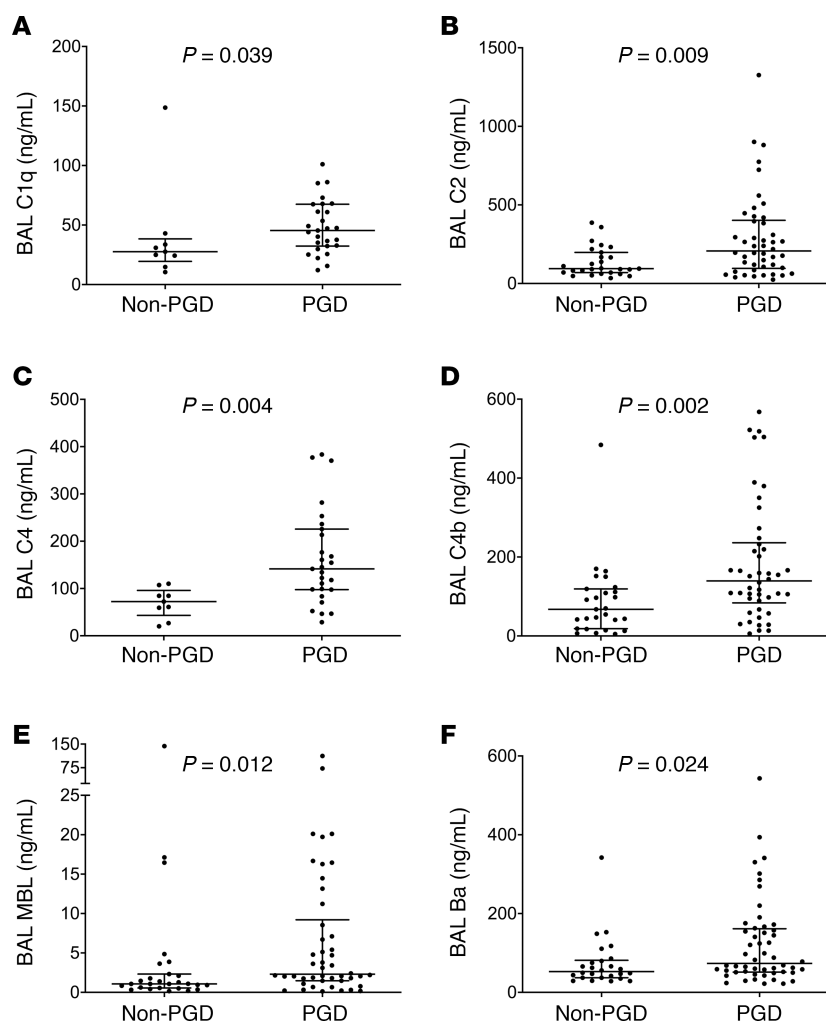


Figure 4. PGD severity is associated with multiple pathways of complement activation. Multiplex assays done in the WUSM cohort ($n = 73$, Table 3 and Supplemental Table 3) were used to compare bronchoalveolar lavage (BAL) fluid levels of C1q, (A), C2 (B), and C4 (C) in subjects who developed PGD compared with those who did not. The presence of C4b, suggestive of activation of both classical and lectin pathways, was compared in subjects with PGD and those without it (D). C2 and C4 are involved in both the classical and lectin pathways of complement activation, while C1q is specific to the classical pathway, and MBL (E) is specific to the lectin pathway. Additionally, Ba, which is generated from factor B and represents activation of the alternative pathway, was measured (F). Rank sum tests of comparison (Mann-Whitney U test).

Methods

Study design, settings, and participants

This retrospective cohort study used BAL samples that had been independently collected at 2 centers, the University of Pennsylvania and Washington University School of Medicine (Figure 1).

Participants were enrolled at the University of Pennsylvania as part of the Prospective Registry of Outcomes in Patients Electing Lung Transplantation (PROPEL) (Penn cohort) (47). In this cohort, all BAL samples were collected from patients receiving a lung transplant between June 2013 and April 2017 at the Hospital of the University of Pennsylvania. At approximately 2 hours after allograft reperfusion, 20 mL PBS was instilled into the right middle lobe of the lung, and a return of 5–10 mL was obtained, which was centrifuged, separated into supernatant aliquots and cell pellet suspensions, and then stored at -80°C until experimentation. Clinical data were collected for all patients.

BAL samples collected at Washington University School of Medicine between July 2017 and January 2019 (WUSM cohort) were used as a second independent cohort and for subsequent analyses. In this cohort, at 18–24 hours after allograft reperfusion, 100 mL PBS was instilled into the right middle lobe of

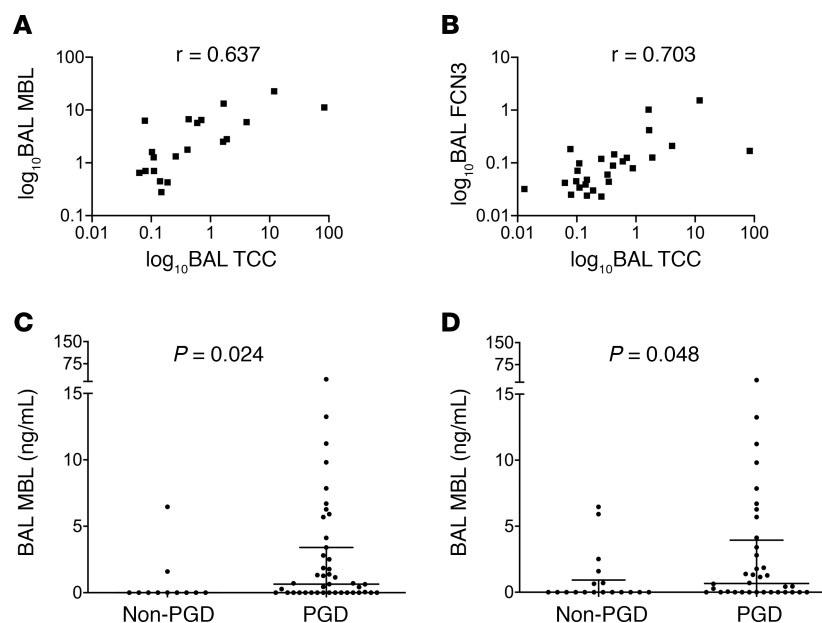


Figure 5. Local markers of lectin pathway activation distinguish subjects with PGD. Levels of mannose-binding lectin (MBL) in the bronchoalveolar lavage (BAL) highly correlated with markers of complement activation in the BAL (soluble terminal complement complex [TCC]) in the WUSM cohort (A, $n = 40$). Using a different assay than in Figure 4 ($n = 73$), BAL MBL levels were higher in subjects who developed PGD compared with the levels in subjects without PGD (C), and this held true in those who developed PGD at or after 24 hours (D). The levels of ficolin-3 (FCN3; B) also highly correlated with BAL TCC ($n = 40$). r represents Spearman's rho coefficient. The axes were expressed in a logarithmic scale for purposes of graphical representation. Rank sum tests of comparison (Mann-Whitney U test).

the lung, centrifuged, separated into aliquots, and stored. The processing of the samples in the laboratory was similar to that at the University of Pennsylvania. Blood samples were collected from the same recipients at the same time the BAL specimens were obtained. These were transported on ice, centrifuged to collect plasma, and stored at -80°C .

Outcome definition

PGD is defined as a syndrome of acute lung injury occurring early after LTx, graded on the basis of pulmonary edema on chest radiographs and the degree of hypoxemia, and measured by the $\text{PaO}_2/\text{FiO}_2$ ratio. PaO_2 is the partial pressure of arterial oxygen, and FiO_2 is the fraction of inspired oxygen (Supplemental Table 1) (1). In the Penn cohort, the primary outcome considered was grade 3 PGD occurring within the first 48–72 hours after LTx, as defined by the International Society for Heart and Lung Transplant guidelines (2). Because of institutional differences in recipient characteristics between the Penn and WUSM cohorts, including the difference between the number of transplants done on ECLS, the number of grade 2 or 3 PGD cases was fewer in the WUSM cohort. Because there were fewer cases of grade 2 or 3 PGD in the WUSM cohort, an alternative definition of “any grade of PGD (any PGD)” was used for the analysis in the WUSM cohort. In this scenario, patients with any grade of PGD (grades 1–3) were considered as having PGD, and a sensitivity analysis was conducted after excluding those who developed PGD before 24 hours. Additionally, a subgroup analysis was done considering the smaller number of subjects in the WUSM cohort who had grade 2 or 3 PGD. PGD scoring was independently done in a blinded manner by members of the transplant team (47).

Protein concentration measurement

Participants were screened for complement activation in the BAL using the sC5b-9 assay (BD OptEIA Human C5b-9 ELISA set) and the sC4d assay (Quidel MicroVue ELISA). Individual complement analytes were evaluated using a modified MILLIPLEX MAP Human Complement Panel 1 and 2 (MilliporeSigma). Lectin pathway analytes were measured in both plasma and BAL. All BAL or plasma aliquots that were used had been through no more than 1 freeze-thaw cycle. Laboratory personnel were blinded to PGD status.

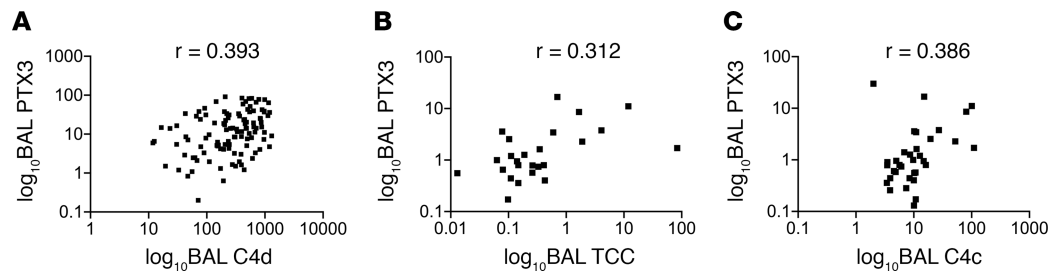


Figure 6. Local PTX3 moderately correlated with markers of complement activation. Levels of long pentraxin 3 (PTX3) in the bronchoalveolar lavage (BAL) only had a modest correlation with markers of complement activation in the BAL (C4d) in the Penn cohort (**A**, $n = 113$). This correlation held true in the second independent cohort (WUSM, $n = 40$) for the terminal complement complex (TCC; **B**) and was also true for C4c (**C**). r represents Spearman's rho coefficient. The axes were expressed in a logarithmic scale for purposes of graphical representation.

Measurements of different complement components

sC5b-9 assay. Participants were screened for complement activation in the BAL using the sC5b-9 assay (BD OptEIA Human C5b-9 ELISA set) (53, 54). Per the manufacturer's instructions, purified native human C3, C4, C5, C6, C7, C8, and C9 have been tested in the BD OptEIA assay at ≥ 5 mg/mL, and no cross-reactivity (value ≥ 470 pg/mL) was identified.

sC4d assay. sC4d was detected in the BAL using a highly specific C4d assay (Quidel MicroVue ELISA), which has previously been used to detect C4d in BAL fluid. (55, 56)

Individual complement analytes using MILLIPLEX assay. Individual complement analytes were evaluated using a modified MILLIPLEX MAP Human Complement Panel 1 and 2 (MilliporeSigma, Supplemental Table 3) based on the Luminex xMAP technology, a bead-based multiplex assay. Specifically, we used the MILLIPLEX MAP Human Complement Panel 1 (HCMP1MAG) to simultaneously quantify the following analytes in the BAL: complement C2, complement C4b, complement C5, complement C5a, complement C9, adipsin (complement factor D), and MBL. Of note, this assay is specific for C4b and does not cross-react with C4d (per communication with manufacturer). The C5 measurements are distinct from C5a, as the intact factors are designed such as they would not detect individual fragments based on their capture and detection antibodies.

Similarly, we used the MILLIPLEX MAP Human Complement Panel 2 (HCMP2MAG) to simultaneously quantify the following analytes in the BAL: complement C1q, complement C3, complement C3b/iC3b, complement C4, and complement factor B. Of note, the assay for C3b/iC3b detects both C3b and iC3b (per communication with manufacturer). The factor B assay does not detect either fragments Bb or Ba.

Lectin pathway analytes. The following lectin pathway pattern recognition molecules were measured in both plasma and BAL in duplicate: MBL, PTX3, FCN-1, FCN-2, and FCN-3 were quantified in specific sandwich ELISAs with monoclonal antibodies for each marker developed in the Laboratory of Molecular Medicine, Rigshospitalet, according to previously described procedures (57–61). All assays were optimized for automated analysis in a 384-well format on the Biomek FX robotic system (Beckman Coulter) (62). Alternative assays for C4 activation, i.e., C4c and sC5b-9 (TCC) were measured in ELISAs based on monoclonal antibodies against neoepitopes on the C4c fragment and C9 not exposed on the native molecules as described previously (63, 64).

Alternative pathway analytes. Ba was measured in duplicate in the WUSM cohort using the Microvue Complement Ba fragment EIA kit (A033, Quidel Inc.).

PTX3 assay. BAL concentrations of PTX3 were measured in duplicate in the Penn cohort using commercially available sandwich ELISAs (PTX3, Quantikine ELISA) as described previously (10, 11).

Statistics

PGD associations with BAL levels of complement proteins were evaluated using rank sum tests. Given the sample size, we were stricter in our hypothesis testing and used nonparametric tests for comparison (e.g., assuming the data did not follow a normal distribution). Specifically, 2 independent groups were compared using the Mann-Whitney U test, and multiple group comparisons were done using nonparametric test for trends. For statistical analysis, the analysis corrected for multiple comparisons when comparing more than 2 groups. All statistical tests for comparison were 2 sided, and $P < 0.05$ was considered significant. In all figures,

the error bars are defined such that data represent median with IQR. The correlation between complement activation proteins and individual analytes was assessed using Spearman's correlation. Statistical analysis was performed using STATA 13.1 software (STATA Corp.); GraphPad Prism 8 was used for generating graphs.

Study approval

The institutional review boards of University of Pennsylvania and Washington University School of Medicine independently approved this study, and written informed consent was obtained from all participants before inclusion in the study.

Author contributions

HSK, JPA, JDC, AEG, and JMD provided study design. TT, BM, KNS, MB, MO, MR, and EC collected samples. LM, KR, HSK, MC, KP, PG, JM, and MC performed assays. HSK, LM, KR, LK, MKP, MC, MS, DEB, RRH, DK, JPA, JDC, AEG, JMD, KP, and PG provided data analysis and interpretation. HSK, AEG, and JMD drafted the manuscript. All authors provided critical revision and the final decision to submit.

Acknowledgments

We acknowledge Michelle Elvington, Kathy Liszewski, Dennis Hourcade, and Davide Scozzi for their thoughtful comments on the manuscript, Lynne Mitchell for sharing reagents, Jack Ferreira and Fuyi Liao for their technical assistance, all the members of the lung transplant programs for their input (including Chad A. Witt, Jennifer Alexander-Brett, Laneshia K. Tague, Rodrigo Vazquez-Guillamet, Varun Puri, and Ruben Nava), and our lung transplant recipients for their participation in the study. We acknowledge the following funding: National Center for Advancing Translational Sciences of the NIH under award KL2 TR002346 (to HSK, PI: Victoria J. Fraser); K08 HL148510 (to HSK); K23HL121406 (to JMD); K23HL116656 and R03HL135227 (to EC); R01 HL087115, K24 HL115354, and U01 HL145435 (to JDC); R01 GM99111 (to JPA); and R01HL094601 and P01AI116501 (to AEG). HSK was supported by the American Lung Association, Children's Discovery Institute of Washington University and St. Louis Children's Hospital (PD-FR-2020-867), and the Sharing Partnership for Innovative Research in Translation award through the Institute of Clinical and Translational Sciences at the Washington University (NIH/National Center for Advancing Translational Sciences grant UL1 TR002345). EC was funded by the Robert Wood Johnson Foundation under award AMFDP70640. RRH and AE were funded by the Cystic Fibrosis Foundation, and AEG was funded by the Barnes-Jewish Hospital Foundation. KP and PG were funded by The Danish Heart Foundation (16-R107-A6650-22966), the Danish Research Foundation of Independent Research (DFF-6110-00489), the Svend Andersen Research Foundation, and the Novo Nordisk Research Foundation. The content is solely the responsibility of the authors and does not necessarily represent the official views of the NIH.

Address correspondence to: Hrishikesh S. Kulkarni or John P. Atkinson, Division of Pulmonary and Critical Care Medicine, Washington University School of Medicine, 4523 Clayton Avenue, Campus Box 8052 (HSK) or Campus Box 8045 (JPA), St. Louis, Missouri 63110, USA. Phone: 314.273.9008; Email: hkulkarn@wustl.edu (HSK). Phone: 314.362.8391; Email: j.p.atkinson@wustl.edu (JPA).

1. Snell GI, et al. Report of the ISHLT Working Group on Primary Lung Graft Dysfunction, part I: Definition and grading-A 2016 Consensus Group statement of the International Society for Heart and Lung Transplantation. *J Heart Lung Transplant.* 2017;36(10):1097–1103.
2. Diamond JM, et al. Report of the International Society for Heart and Lung Transplantation Working Group on Primary Lung Graft Dysfunction, part II: Epidemiology, risk factors, and outcomes-A 2016 Consensus Group statement of the International Society for Heart and Lung Transplantation. *J Heart Lung Transplant.* 2017;36(10):1104–1113.
3. Porteous MK, Diamond JM, Christie JD. Primary graft dysfunction: lessons learned about the first 72h after lung transplantation. *Curr Opin Organ Transplant.* 2015;20(5):506–514.
4. Cantu E, et al. Quantitative evidence for revising the definition of primary graft dysfunction after lung transplant. *Am J Respir Crit Care Med.* 2018;197(2):235–243.
5. Shaver CM, Ware LB. Primary graft dysfunction: pathophysiology to guide new preventive therapies. *Expert Rev Respir Med.* 2017;11(2):119–128.
6. Gelman AE, et al. Report of the ISHLT Working Group on Primary Lung Graft Dysfunction Part III: Mechanisms: A 2016 Consensus Group Statement of the International Society for Heart and Lung Transplantation. *J Heart Lung Transplant.* 2017;36(10):1114–1120.

7. Diamond JM, Christie JD. The contribution of airway and lung tissue ischemia to primary graft dysfunction. *Curr Opin Organ Transplant*. 2010;15(5):552–557.
8. de Perrot M, Liu M, Waddell TK, Keshavjee S. Ischemia-reperfusion-induced lung injury. *Am J Respir Crit Care Med*. 2003;167(4):490–511.
9. Ochando J, Fayad ZA, Madsen JC, Netea MG, Mulder WJM. Trained immunity in organ transplantation. *Am J Transplant*. 2020;20(1):10–18.
10. Diamond JM, et al. Elevated plasma long pentraxin-3 levels and primary graft dysfunction after lung transplantation for idiopathic pulmonary fibrosis. *Am J Transplant*. 2011;11(11):2517–2522.
11. Diamond JM, et al. Variation in PTX3 is associated with primary graft dysfunction after lung transplantation. *Am J Respir Crit Care Med*. 2012;186(6):546–552.
12. Doni A, Garlanda C, Bottazzi B, Meri S, Garred P, Mantovani A. Interactions of the humoral pattern recognition molecule PTX3 with the complement system. *Immunobiology*. 2012;217(11):1122–1128.
13. Ma YJ, Garred P. Pentraxins in complement activation and regulation. *Front Immunol*. 2018;9:3046.
14. Kulkarni HS, Liszewski MK, Brody SL, Atkinson JP. The complement system in the airway epithelium: An overlooked host defense mechanism and therapeutic target? *J Allergy Clin Immunol*. 2018;141(5):1582–1586.e1.
15. Nakashima S, Qian Z, Rahimi S, Wasowska BA, Baldwin WM. Membrane attack complex contributes to destruction of vascular integrity in acute lung allograft rejection. *J Immunol*. 2002;169(8):4620–4627.
16. Bosmann M, Ward PA. Role of C3, C5 and anaphylatoxin receptors in acute lung injury and in sepsis. *Adv Exp Med Biol*. 2012;946:147–159.
17. Davis EA, Lam TT, Qian Z, Ibrahim S, Baldwin WM, Sanfilippo FP. Inhibition of neutrophil adhesion and the membrane attack complex of complement synergistically prolongs cardiac xenograft survival. *J Heart Lung Transplant*. 1995;14(5):973–980.
18. Shah RJ, et al. Plasma complement levels are associated with primary graft dysfunction and mortality after lung transplantation. *Am J Respir Crit Care Med*. 2014;189(12):1564–1567.
19. Westall GP, Snell GI, McLean C, Kotsimbos T, Williams T, Magro C. C3d and C4d deposition early after lung transplantation. *J Heart Lung Transplant*. 2008;27(7):722–728.
20. Keshavjee S, Davis RD, Zamora MR, de Perrot M, Patterson GA. A randomized, placebo-controlled trial of complement inhibition in ischemia-reperfusion injury after lung transplantation in human beings. *J Thorac Cardiovasc Surg*. 2005;129(2):423–428.
21. Lama VN, et al. Models of Lung Transplant Research: a consensus statement from the National Heart, Lung, and Blood Institute workshop. *JCI Insight*. 2017;2(9):93121.
22. Millar JE, Fanning JP, McDonald CI, McAuley DF, Fraser JF. The inflammatory response to extracorporeal membrane oxygenation (ECMO): a review of the pathophysiology. *Crit Care*. 2016;20(1):387.
23. Huber-Lang M, Ekdahl KN, Wiegner R, Fromell K, Nilsson B. Auxiliary activation of the complement system and its importance for the pathophysiology of clinical conditions. *Semin Immunopathol*. 2018;40(1):87–102.
24. Garred P, Larsen F, Seyfarth J, Fujita R, Madsen HO. Mannose-binding lectin and its genetic variants. *Genes Immun*. 2006;7(2):85–94.
25. Kambas K, et al. C5a and TNF-alpha up-regulate the expression of tissue factor in intra-alveolar neutrophils of patients with the acute respiratory distress syndrome. *J Immunol*. 2008;180(11):7368–7375.
26. Wygrecka M, et al. Antihistone properties of c1 esterase inhibitor protect against lung injury. *Am J Respir Crit Care Med*. 2017;196(2):186–199.
27. Ali HA, Pavlisko EN, Snyder LD, Frank M, Palmer SM. Complement system in lung transplantation. *Clin Transplant*. 2018;32(4):e13208.
28. Elvington M, et al. Development and optimization of an ELISA to quantitate C3(H₂O) as a marker of human disease. *Front Immunol*. 2019;10:703.
29. Salvatierra A, et al. C1-esterase inhibitor prevents early pulmonary dysfunction after lung transplantation in the dog. *Am J Respir Crit Care Med*. 1997;155(3):1147–1154.
30. Pierre AF, et al. Effect of complement inhibition with soluble complement receptor 1 on pig allotransplant lung function. *Transplantation*. 1998;66(6):723–732.
31. Cheng Q, et al. Donor pretreatment with nebulized complement C3a receptor antagonist mitigates brain-death induced immunological injury post-lung transplant. *Am J Transplant*. 2018;18(10):2417–2428.
32. Sommer W, et al. C1-esterase-inhibitor for primary graft dysfunction in lung transplantation. *Transplantation*. 2014;97(11):1185–1191.
33. Zeerleder S. C1-inhibitor: more than a serine protease inhibitor. *Semin Thromb Hemost*. 2011;37(4):362–374.
34. Casiraghi F, et al. Complement alternative pathway deficiency in recipients protects kidney allograft from ischemia/reperfusion injury and alloreactive T cell response. *Am J Transplant*. 2017;17(9):2312–2325.
35. Atkinson C, et al. Targeted complement inhibitors protect against posttransplant cardiac ischemia and reperfusion injury and reveal an important role for the alternative pathway of complement activation. *J Immunol*. 2010;185(11):7007–7013.
36. Mortensen SA, et al. Structure and activation of C1, the complex initiating the classical pathway of the complement cascade. *Proc Natl Acad Sci USA*. 2017;114(5):986–991.
37. Inforzato A, et al. Structure and function of the long pentraxin PTX3 glycosidic moiety: fine-tuning of the interaction with C1q and complement activation. *Biochemistry*. 2006;45(38):11540–11551.
38. Howard M, Farrar CA, Sacks SH. Structural and functional diversity of collectins and ficolins and their relationship to disease. *Semin Immunopathol*. 2018;40(1):75–85.
39. Farrar CA, et al. Collectin-11 detects stress-induced L-fucose pattern to trigger renal epithelial injury. *J Clin Invest*. 2016;126(5):1911–1925.
40. Matsushita M, Kuraya M, Hamasaki N, Tsujimura M, Shiraki H, Fujita T. Activation of the lectin complement pathway by H-ficolin (Hakata antigen). *J Immunol*. 2002;168(7):3502–3506.
41. Ma YJ, Skjoedt MO, Garred P. Collectin-11/MASP complex formation triggers activation of the lectin complement pathway--the fifth lectin pathway initiation complex. *J Innate Immun*. 2013;5(3):242–250.
42. Garred P, et al. A journey through the lectin pathway of complement-MBL and beyond. *Immunol Rev*. 2016;274(1):74–97.

43. Plovsing RR, et al. Alveolar recruitment of ficolin-3 in response to acute pulmonary inflammation in humans. *Immunobiology*. 2016;221(5):690–697.
44. de Oliveira THC, Souza DG, Teixeira MM, Amaral FA. Tissue dependent role of PTX3 during ischemia-reperfusion injury. *Front Immunol*. 2019;10:1461.
45. Carroll KE, et al. High levels of mannose-binding lectin are associated with poor outcomes after lung transplantation. *Transplantation*. 2011;91(9):1044–1049.
46. Hodge S, Dean M, Hodge G, Holmes M, Reynolds PN. Decreased efferocytosis and mannose binding lectin in the airway in bronchiolitis obliterans syndrome. *J Heart Lung Transplant*. 2011;30(5):589–595.
47. Diamond JM, et al. Clinical risk factors for primary graft dysfunction after lung transplantation. *Am J Respir Crit Care Med*. 2013;187(5):527–534.
48. Verleden SE, et al. Heterogeneity of chronic lung allograft dysfunction: insights from protein expression in broncho alveolar lavage. *J Heart Lung Transplant*. 2011;30(6):667–673.
49. Levy L, et al. Epithelial cell death markers in bronchoalveolar lavage correlate with chronic lung allograft dysfunction subtypes and survival in lung transplant recipients-a single-center retrospective cohort study. *Transpl Int*. 2019;32(9):965–973.
50. Hashimoto K, et al. Circulating cell death biomarkers may predict survival in human lung transplantation. *Am J Respir Crit Care Med*. 2016;194(1):97–105.
51. Marcy TW, Merrill WW, Rankin JA, Reynolds HY. Limitations of using urea to quantify epithelial lining fluid recovered by bronchoalveolar lavage. *Am Rev Respir Dis*. 1987;135(6):1276–1280.
52. Dargaville PA, South M, Vervaart P, McDougall PN. Validity of markers of dilution in small volume lung lavage. *Am J Respir Crit Care Med*. 1999;160(3):778–784.
53. Liuwantara D, et al. Characterizing the mechanistic pathways of the instant blood-mediated inflammatory reaction in xenogeneic neonatal islet cell transplantation. *Transplant Direct*. 2016;2(6):e77.
54. Riedemann NC, et al. Controlling the anaphylatoxin C5a in diseases requires a specifically targeted inhibition. *Clin Immunol*. 2017;180:25–32.
55. Blom AM, Österborg A, Mollnes TE, Okroj M. Antibodies reactive to cleaved sites in complement proteins enable highly specific measurement of soluble markers of complement activation. *Mol Immunol*. 2015;66(2):164–170.
56. Ajona D, et al. Complement C4d-specific antibodies for the diagnosis of lung cancer. *Oncotarget*. 2018;9(5):6346–6355.
57. Munthe-Fog L, et al. Variation in FCN1 affects biosynthesis of ficolin-1 and is associated with outcome of systemic inflammation. *Genes Immun*. 2012;13(7):515–522.
58. Munthe-Fog L, et al. The impact of FCN2 polymorphisms and haplotypes on the Ficolin-2 serum levels. *Scand J Immunol*. 2007;65(4):383–392.
59. Skjoeft MO, et al. MBL-associated serine protease-3 circulates in high serum concentrations predominantly in complex with Ficolin-3 and regulates Ficolin-3 mediated complement activation. *Immunobiology*. 2010;215(11):921–931.
60. Garred P, et al. Diallelic polymorphism may explain variations of the blood concentration of mannan-binding protein in Eskimos, but not in black Africans. *Eur J Immunogenet*. 1992;19(6):403–412.
61. Munthe-Fog L, et al. Characterization of a polymorphism in the coding sequence of FCN3 resulting in a Ficolin-3 (Hakata antigen) deficiency state. *Mol Immunol*. 2008;45(9):2660–2666.
62. Vengen IT, Enger TB, Videm V, Garred P. Pentraxin 3, ficolin-2 and lectin pathway associated serine protease MASP-3 as early predictors of myocardial infarction - the HUNT2 study. *Sci Rep*. 2017;7:43045.
63. Pilely K, et al. A specific assay for quantification of human C4c by use of an anti-C4c monoclonal antibody. *J Immunol Methods*. 2014;405:87–96.
64. Mollnes TE, Lea T, Frøland SS, Harboe M. Quantification of the terminal complement complex in human plasma by an enzyme-linked immunosorbent assay based on monoclonal antibodies against a neoantigen of the complex. *Scand J Immunol*. 1985;22(2):197–202.