

Washington University School of Medicine

Digital Commons@Becker

---

Newsletters from the Division of Public Health  
Sciences

Division of Public Health Sciences

---

8-2018

## Research Digest - August 2018

Division of Public Health Sciences, Department of Surgery, Washington University School of  
Medicine in St. Louis

Follow this and additional works at: [https://digitalcommons.wustl.edu/phs\\_newsletters](https://digitalcommons.wustl.edu/phs_newsletters)

---

### Recommended Citation

Division of Public Health Sciences, Department of Surgery, Washington University School of Medicine in  
St. Louis, "Research Digest - August 2018" (2018). *Newsletters from the Division of Public Health  
Sciences*. Paper 69 Division of Public Health Sciences, Washington University School of Medicine in St.  
Louis.

[https://digitalcommons.wustl.edu/phs\\_newsletters/69](https://digitalcommons.wustl.edu/phs_newsletters/69)

This Newsletter is brought to you for free and open access by the Division of Public Health Sciences at Digital  
Commons@Becker. It has been accepted for inclusion in Newsletters from the Division of Public Health Sciences  
by an authorized administrator of Digital Commons@Becker. For more information, please contact  
[vanam@wustl.edu](mailto:vanam@wustl.edu).

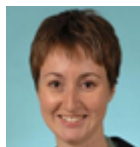


## Research Digest

August 2018

From the Division of Public Health Sciences, Department of Surgery  
Graham A. Colditz, MD, DrPH, *Chief*

### Physical examination for the assessment of pelvic floor myofascial pain: A systematic review



| **Epidemiology Research** |  
Siobhan Sutcliffe, PhD; et al.  
Published in *The American Journal of Obstetrics & Gynecology*  
[PubMed](#) | [Sutcliffe Profile](#)

### An economic assessment of contemporary kidney transplant practice



| **Health Economics Research** |  
Su-Hsin Chang, PhD; et al.  
Published in *American Journal of Transplantation*  
[PubMed](#) | [Chang Profile](#)

### Relative efficiency of unequal versus equal cluster sizes in cluster randomized trials using generalized estimating equation models



| **Biostatistics Research** |  
Esther Lu, PhD; Graham Colditz, MD, DrPH  
Published in *Biometrical Journal*  
[PubMed](#) | [Lu Profile](#) | [Colditz Profile](#)

[Read our open access publications online](#)

### Division News Briefs

- The Division of Public Health Sciences congratulates [Yin Cao, ScD, MPH](#), assistant professor of surgery, on [funding of a K award](#) to study aspirin and chemopreventative benefits for colorectal cancer.
- The Division welcomes three new members: [Ana Salazar Zetina, MD, MPHS](#), a postdoctoral associate; [Abigail Zamorano, MD](#), a postdoctoral associate and clinical fellow in obstetrics and gynecology; and Jennifer Hodges, a grants specialist. Please help welcome Ana, Abigail, and Jennifer!



#### ABOUT US

This newsletter provides a select summary of research news from the Division of Public Health Sciences.

We are a team of researchers and clinicians dedicated to preventing disease, improving health outcomes, and promoting quality and access to health care.

The Division of Public Health Sciences is part of the [Department of Surgery](#).

#### CONTACT US

[k.henke@wustl.edu](mailto:k.henke@wustl.edu)  
314.454.7650  
[Division Website](#)  
[Cancer News in Context Blog](#)  
[Your Disease Risk](#)  
[Twitter](#)

## Research Digest

August 2018

- **Postdoctoral candidate Shaila Strayhorn will present on August 7 at 1:00 p.m.** Please join colleagues for her presentation, *Racial differences in social support and quality of life among individuals with chronic illness*, in the Richmond Room.
- Please join **Yamile Molina, PhD, MPH**, assistant professor at the University of Chicago at Illinois on **August 22 at 12:00 p.m.** Dr. Molina will present in the Doll & Hill room at the Taylor Avenues Building as part of the [Epidemiology and Clinical Research Outcomes Seminar Series](#). This will be a brown bag lunch presentation.
- The **5th Rural Cancer Disparities WUSTL Siteman-SIUSM Partnership Retreat** will be held **August 24** from 9:30 a.m. - 2:30 p.m. in the Doll & Hill Room. [Registration is now open.](#)
- Join the **Program for the Elimination of Cancer Disparities (PECaD) for [community town halls](#)** on August 27, 28, and September 8 for community members to provide feedback about the new Siteman Cancer Center at Christian Hospital.
- The Division is excited to now offer a fifth 8 Ways brochure: [8 Ways to a Healthier Weight and Lower Risk of Cancer.](#)
- **Media Notes:** 1) [Health.com](#) interviewed [Yikyung Park, ScD](#), associate professor of surgery, on the link between alcohol and breast cancer. 2) [Justin Moore, PhD](#), postdoctoral associate, spoke with [St. Louis Public Radio](#) about breast cancer disparities and hot spots in the St. Louis region and along the Mississippi River. 3) [Adetunji Toriola, MD, PhD](#), assistant professor of surgery, is featured in this month's [In Good Taste article](#) as he talks about the health benefits of corn.

---

[Learn more about our research](#) | [Master of Population Health Sciences degree program for clinicians](#) | [Cell to Society Pathway](#)

---

[Click to view this email in a browser](#)

If you no longer wish to receive these emails, please reply to this message with "Unsubscribe" in the subject line or simply click on the following link: [Unsubscribe](#)

---

Division of Public Health Sciences, Department of Surgery  
660 S. Euclid Ave.  
Campus Box 8100  
St. Louis, MO 63110  
United States

**vertical** DELIVERED BY  
**response**  
Try It Free Today!

[Read](#) the VerticalResponse marketing policy.