

Washington University School of Medicine

Digital Commons@Becker

---

Open Access Publications

---

2019

## Efficacy and safety of eluxadoline in patients with irritable bowel syndrome with diarrhea who report inadequate symptom control with loperamide: RELIEF phase 4 study

Darren M. Brenner  
*Northwestern University*

Gregory S. Sayuk  
*Washington University School of Medicine in St. Louis*

Catherine R. Gutman  
*Allergan*

Esther Jo  
*Allergan*

Steven J. R. Elmes  
*Allergan*

*See next page for additional authors*

Follow this and additional works at: [https://digitalcommons.wustl.edu/open\\_access\\_pubs](https://digitalcommons.wustl.edu/open_access_pubs)

**Please let us know how this document benefits you.**

---

### Recommended Citation

Brenner, Darren M.; Sayuk, Gregory S.; Gutman, Catherine R.; Jo, Esther; Elmes, Steven J. R.; Liu, Louis W. C.; and Cash, Brooks D., "Efficacy and safety of eluxadoline in patients with irritable bowel syndrome with diarrhea who report inadequate symptom control with loperamide: RELIEF phase 4 study." *The American Journal of Gastroenterology*. 114, 9. 1502 - 1511. (2019).  
[https://digitalcommons.wustl.edu/open\\_access\\_pubs/9706](https://digitalcommons.wustl.edu/open_access_pubs/9706)

This Open Access Publication is brought to you for free and open access by Digital Commons@Becker. It has been accepted for inclusion in Open Access Publications by an authorized administrator of Digital Commons@Becker. For more information, please contact [vanam@wustl.edu](mailto:vanam@wustl.edu).

---

## Authors

Darren M. Brenner, Gregory S. Sayuk, Catherine R. Gutman, Esther Jo, Steven J. R. Elmes, Louis W. C. Liu, and Brooks D. Cash

## Open

# Efficacy and Safety of Eluxadoline in Patients With Irritable Bowel Syndrome With Diarrhea Who Report Inadequate Symptom Control With Loperamide: RELIEF Phase 4 Study

Darren M. Brenner, MD<sup>1</sup>, Gregory S. Sayuk, MD<sup>2,3</sup>, Catherine R. Gutman, PhD<sup>4</sup>, Esther Jo, MPH<sup>5</sup>, Steven J. R. Elmes, PhD<sup>4</sup>, Louis W. C. Liu, MD, PhD<sup>6</sup> and Brooks D. Cash, MD<sup>7</sup>

- OBJECTIVES:** Irritable bowel syndrome with diarrhea (IBS-D) is a functional gastrointestinal disorder with limited effective treatment options. We evaluated the efficacy and safety of eluxadoline in patients with IBS-D who reported inadequate symptom control with prior loperamide.
- METHODS:** Three hundred forty-six adults with IBS-D (Rome III criteria) were randomly assigned to placebo or eluxadoline 100 mg twice daily for 12 weeks. Patients recorded daily IBS-D symptoms, including worst abdominal pain (WAP) and stool consistency (through Bristol Stool Scale). The primary endpoint was proportion of composite responders, defined as patients who met daily composite response criteria ( $\geq 40\%$  WAP improvement and  $< 5$  Bristol Stool Scale score) for at least 50% of treatment days, and recorded  $\geq 60$  days of diary entries over the 12-week period.
- RESULTS:** Over 12 weeks, a significantly greater proportion of eluxadoline patients achieved the primary composite responder endpoint compared to placebo (22.7% vs 10.3%,  $P = 0.002$ ), and component endpoints of improvements in stool consistency (27.9% vs 16.7%,  $P = 0.01$ ) and WAP (43.6% vs 31.0%,  $P = 0.02$ ). Additionally, a greater proportion of eluxadoline patients met the composite responder endpoint assessed at monthly intervals compared to placebo (weeks 1–4: 14.0% vs 6.9%,  $P = 0.03$ ; weeks 5–8: 26.7% vs 14.9%,  $P = 0.006$ ; weeks 9–12: 30.8% vs 16.7%,  $P = 0.002$ ). Rates of adverse events were comparable in both groups (37.4% vs 35.3%); no treatment-related serious adverse event, cases of sphincter of Oddi spasm, or pancreatitis were reported.
- DISCUSSION:** Eluxadoline appears safe and effective for treating IBS-D symptoms in patients with an intact gallbladder reporting inadequate relief with prior loperamide use.

**SUPPLEMENTARY MATERIAL** accompanies this paper at <http://links.lww.com/AJG/B246>, <http://links.lww.com/AJG/B265>, <http://links.lww.com/AJG/B266>, and <http://links.lww.com/AJG/B267>

*Am J Gastroenterol* 2019;114:1502–1511. <https://doi.org/10.14309/ajg.0000000000000327>

## INTRODUCTION

Irritable bowel syndrome (IBS) is a common functional gastrointestinal (GI) disorder, with an estimated global prevalence of 11% (1,2). IBS is characterized by regular abdominal pain associated with changes in stool frequency and/or consistency and is subtyped based on the predominant stool pattern: IBS with constipation, diarrhea (IBS-D), mixed, or unsubtyped. Of the subtypes, IBS-D is the most common, comprising nearly 45% of all IBS cases (3).

Effective treatment options for IBS-D are limited, and patients often resort to interventions based on relieving individual symptoms. Typical initial therapeutic interventions include dietary and lifestyle modifications, as well as over-the-counter antidiarrheals. Loperamide, a peripherally restricted  $\mu$ -opioid receptor ( $\mu$ -OR) agonist that mechanistically decreases gut motility and increases fluid reabsorption, is one of the most commonly used agents for the management of IBS-D (4,5) despite the recent American College of Gastroenterology IBS Monograph

<sup>1</sup>Feinberg School of Medicine, Northwestern University, Chicago, Illinois, USA; <sup>2</sup>Washington University School of Medicine, St. Louis, Missouri, USA; <sup>3</sup>St. Louis VA Medical Center, St. Louis, Missouri, USA; <sup>4</sup>Allergan plc, Madison, New Jersey, USA; <sup>5</sup>Allergan plc, Irvine, California, USA; <sup>6</sup>Toronto Western Hospital, University Health Network, Department of Medicine, University of Toronto, Toronto, Ontario, Canada; <sup>7</sup>McGovern Medical School, University of Texas Health Science Center at Houston, Houston, Texas, USA. **Correspondence:** Darren M. Brenner, MD. E-mail: [darren-brenner@northwestern.edu](mailto:darren-brenner@northwestern.edu).

Received January 3, 2019; accepted May 28, 2019; published online July 26, 2019

strongly recommending against it as an IBS therapy (6). Loperamide is not indicated for long-term use and does not alleviate abdominal pain or bloating (7–11). Therefore, there is considerable need for new and effective treatments with favorable safety profiles that hold the potential to provide sustained symptom relief for patients with IBS-D.

Eluxadoline is a locally acting, mixed  $\mu$ -OR agonist,  $\kappa$ -opioid receptor agonist, and  $\delta$ -opioid receptor ( $\delta$ -OR) antagonist with minimal oral bioavailability approved by the US Food and Drug Administration (FDA) for the treatment of IBS-D (12). Owing to its combined pharmacological profile, eluxadoline reduces gut motility consistent with its primary role as a  $\mu$ -OR agonist and, due to its  $\delta$ -OR antagonism, decreases the potential for medication-induced constipation. Importantly, eluxadoline was also shown to improve abdominal pain in 2 randomized, multicenter, multinational, double-blind, placebo-controlled phase 3 studies (IBS-3001 and IBS-3002) conducted in more than 2,400 patients with IBS-D (13). These unique features distinguish eluxadoline from peripherally acting  $\mu$ -OR agonists such as loperamide (14). The primary endpoint of the two phase 3 trials of eluxadoline was defined by the simultaneous improvement in the daily worst abdominal pain (WAP) score by  $\geq 30\%$  compared with baseline weekly average and a reduction in the Bristol Stool Scale (BSS) to  $< 5$  on at least 50% of days within a 12-week treatment period (FDA endpoint) and a 26-week treatment period (European Medicines Agency endpoint). The 2 studies demonstrated that eluxadoline 100 mg twice daily had significantly greater composite responder rates as compared with placebo.

Patient history of prior loperamide use was collected in both phase 3 studies, and *post-hoc* analyses on the efficacy of eluxadoline in patients previously treated with loperamide were conducted (15). In total, 36% of all 2,400 patients with IBS-D in these studies reported prior loperamide use, among whom 62% self-reported inadequate symptom control. In the subpopulation of those not achieving adequate symptom control with prior loperamide use, a significantly greater proportion were composite responders following treatment with eluxadoline as compared to placebo (15). However, this subgroup analysis depended on patient recollection with varied durations of prior loperamide use. Therefore, the present study was conducted to further evaluate the efficacy, safety, and tolerability of eluxadoline 100 mg twice daily in patients who reported inadequate IBS-D symptom control with loperamide in the preceding 12 months. It was anticipated that the findings from this study would further our understanding on the utility of eluxadoline among patients with IBS-D self-reported as having experienced inadequate symptom relief with loperamide.

## METHODS

### Study design

This was a double-blinded, randomized, placebo-controlled, prospective, multicenter, multinational phase 4 study in adult patients with IBS-D (trial registration NCT02959983). The study comprised a 1-week screening period in which patients were assessed for eligibility, followed by a 3-week pretreatment period during which patients completed electronic patient-reported outcome (ePRO) diaries to record daily information regarding their IBS-D symptoms and loperamide rescue medication use. Following the pretreatment period, eligible patients who met the study entry criteria related to ePRO diary compliance, stool

consistency (assessed by BSS), average WAP, and use of loperamide rescue medication were randomized through a central randomization system to receive eluxadoline 100 mg or placebo twice daily for 12 weeks. During the treatment period, patients returned to the clinic for visits at weeks 4, 8, and 12 (end-of-treatment visit), and for a post-treatment follow-up study visit at week 14. The total study duration was up to 18 weeks, with 7 site visits for each patient. The study design is presented in Supplementary Figure 1 (see Supplementary Digital Content 1, <http://links.lww.com/AJG/B246>).

### Participants

Eligible patients were 18–80 years of age, with a diagnosis of IBS-D per Rome III criteria (defined as loose [mushy] or watery stools  $\geq 25\%$  and hard or lumpy stools  $\leq 25\%$  of bowel movements), an average WAP score of  $> 3.0$  (on a scale from 0 [no pain] to 10 [worst imaginable pain]) in the preceding 24 hours, an average BSS score of  $\geq 5.5$  (on a scale of 1 [hard lumpy stool] to 7 [entirely liquid stool]), and a BSS score of  $\geq 5$  in  $\geq 5$  days during the week before randomization. Prospective patients who met the above diagnostic criteria were prescreened based on loperamide use in the preceding 12 months and self-reported overall inadequate IBS symptom control with loperamide for study inclusion. A follow-up questionnaire was administered, which queried the patterns of medication usage (i.e., frequency, duration, reason for stopping, and degree of satisfaction with individual symptom relief including diarrhea, abdominal pain, and improvement in bowel movement) among patients who indicated that they managed their IBS-D using loperamide, antidiarrheals other than loperamide, antidepressants, and anticholinergics/antispasmodics. Patients were not allowed to use loperamide within 14 days before randomization. Patients were also required to complete the ePRO diary on at least 5 of the 7 days during the week before randomization and at least 10 of the 14 days during the 2-week pretreatment period before randomization. Key exclusion criteria were patients with IBS with constipation, IBS with mixed, or IBS with unsubtyped, history of inflammatory or immune-mediated GI disorders, diverticulitis, pancreatitis, known or suspected biliary duct obstruction, or sphincter of Oddi disease. Patients without a gallbladder were excluded in line with the updated US label (12). Patients with current or expected use of any narcotic or opioid-containing agents (e.g., antidiarrheal medications [except loperamide rescue medication after randomization] or opioid analgesics), or those with a history of alcohol abuse, alcohol addiction, or consumption of  $> 3$  alcoholic beverages per day were also excluded. Full eligibility criteria are included in the study protocol (see Supplementary Digital Content 2, <http://links.lww.com/AJG/B265>). The study protocol was approved and finalized before the first patient was screened, and written informed consent was obtained from all participants before initiation of any study-related activities.

### Study outcomes and assessments

During the double-blind 12-week treatment period, patients recorded daily IBS-D symptoms including stool consistency (assessed through BSS), WAP, abdominal discomfort, abdominal bloating, bowel movement frequency, number of episodes of urgency in a day, number of episodes of fecal incontinence, and loperamide rescue medication use, through the ePRO diary.

The primary efficacy endpoint was the proportion of composite responders, defined as patients who met the daily composite

response criteria (daily pain response: WAP score improvement by  $\geq 40\%$  in the preceding 24 hours and daily stool consistency response: BSS score  $< 5$  [or absence of bowel movement accompanied by  $\geq 40\%$  WAP improvement compared to baseline]) for at least 50% of treatment days and had  $\geq 60$  days of diary entries over the 12-week treatment period. Patients with  $< 60$  days of diary entries were considered nonresponders for the primary efficacy endpoint.

The 3 main secondary efficacy endpoints were defined as follows: (i) proportion of stool consistency responders (i.e., patients who met the daily stool consistency for  $\geq 50\%$  of days with diary entries over a certain time period, defined for the full 12-week treatment period [ $\geq 60$  days of diary entries for the full 12 weeks] and each 4-week interval [ $> 20$  days of diary entries for each 4-week interval]); (ii) proportion of pain responders (i.e., patients who met the daily pain response criteria for  $\geq 50\%$  of days with diary entries over a certain time period, defined for the full 12-week treatment period [ $\geq 60$  days of diary entries for the full 12 weeks] and each 4-week interval [ $> 20$  days of diary entries for each 4-week interval]); (iii) proportion of monthly composite responders (i.e., patients who met the daily composite response criteria for  $> 50\%$  of days with diary entry for  $\geq 20$  days during each 4-week interval [weeks 1–4, 5–8, and 9–12]). Patients with  $< 60$  days of diary entry for the 12-week treatment period or  $< 20$  days of diary entries for the 4-week intervals were considered nonresponders for the secondary efficacy endpoints.

Composite responder data were further analyzed by weekly responders for each week up to week 12 with responders defined in 2 ways. For definition #1, weekly composite responders were defined as daily composite responders on  $\geq 4$  days for a week (daily composite responder:  $\geq 40\%$  WAP improvement and  $< 5$  BSS score [or absence of bowel movement accompanied by  $\geq 40\%$  WAP improvement compared to baseline]). For definition #2, weekly composite responders were defined as patients with weekly average WAP improvement of  $\geq 40\%$  from average WAP of the baseline week and with  $\geq 50\%$  reduction in the days of BSS score 6/7 for a study week compared with days of BSS score 6/7 during the baseline week. An analysis was also performed using  $\geq 6$ -week responders, wherein patients were required to meet the 2 weekly composite responder definitions defined above for at least 6 weeks over the 12-week treatment period. Safety and tolerability assessed the incidence of treatment-emergent adverse events (TEAEs). Additional endpoints are described in the study protocol and statistical analysis plan included in the Supplementary Materials (see Study Protocol, Supplementary Digital Content 2, <http://links.lww.com/AJG/B265> and Statistical Analysis, Supplementary Digital Content 3, <http://links.lww.com/AJG/B266>).

### Statistical analyses

The trial was designed with 90% power to detect the difference of the primary efficacy endpoint response for eluxadoline vs placebo using a 2-sided  $\chi^2$  test at a significance level of 0.05. Similar to the primary endpoint, the secondary efficacy endpoints were analyzed using the number and percentage of the corresponding responders with  $P$ -values from  $\chi^2$  test. No adjustment for the multiplicity of endpoints was performed.

Diary compliance was summarized by compliance categories ( $< 60$  vs  $> 60$  days) during the full 12-week treatment period ( $\sim 84$  days) or  $< 20$  vs  $> 20$  days for the 4-week intervals, each corresponding to at least 70% compliance. For partial diary entries, compliance was affirmative if either WAP score and BSS score or WAP score and bowel movement frequency of zero were

completed. For patients who met the criteria of the minimum of 4 days of diary entry, missing diary entries were imputed using the last observation carried forward method, the percent reduction calculation used the imputed data. Safety data were summarized using descriptive statistics. Adverse events were coded using the Medical Dictionary for Regulatory Activities (MedDRA, v20.0).

Evaluation of efficacy and patient demographics was based on the intent-to-treat population, which included all randomized patients. For the intent-to-treat population, patients were analyzed according to their randomization assignment, regardless of the actual treatment received. Evaluation of safety endpoints was conducted using the safety population, which included all enrolled patients who received at least one dose of study drug. For the safety population, patients were grouped and analyzed according to the treatment they actually received. Additional details related to statistical analysis are described in the study protocol and statistical analysis plan included in the Supplementary Materials (see Study Protocol, Supplementary Digital Content 2, <http://links.lww.com/AJG/B265> and Statistical Analysis, Supplementary Digital Content 3, <http://links.lww.com/AJG/B266>).

### Data availability

Data reported in this manuscript are available within the article and its supplementary materials. Additional data from the RELIEF study may be requested at <http://www.allerganclinicaltrials.com/PatientDataRequest.htm>.

## RESULTS

### Patient disposition

The study was conducted from November 2016 to January 2018 in 82 study sites across the United States and Canada. Of the 660 screened for eligibility, 346 patients were randomized to either placebo ( $n = 174$ ) or eluxadoline ( $n = 172$ ), and 295 (85.3%) completed the trial (see Figure 2, Supplementary Digital Content 1, <http://links.lww.com/AJG/B246>). Baseline characteristics among the patients were similar between the placebo and eluxadoline groups. The mean age was 44 years, 70% were women, and the median time since IBS-D diagnosis was 6 years. Overall, baseline IBS-D symptoms, including WAP, stool consistency, and patterns of bowel movements, were also similar between the 2 groups (Table 1).

### IBS-D treatment before randomization

Previous treatment for IBS-D was balanced between the 2 groups. Use of antidiarrheal medications other than loperamide was reported by 27 (15.5%) patients in the placebo group and 23 (13.4%) in the eluxadoline group (see Table 1, Supplementary Digital Content 1, <http://links.lww.com/AJG/B246>). In addition, patients also reported managing their IBS-D using antidepressants, anticholinergics/antispasmodics, and in fact,  $> 60\%$  of patients tried at least one additional method, including lifestyle changes. For most patients (approximately 85%), loperamide was taken on an as-needed basis, while approximately 11% reported daily loperamide use (Table 2). Duration of loperamide use varied among the patients, with 80 (46.5%) in the placebo group and 67 (39.4%) in the eluxadoline group having taken loperamide for longer than 1 year. At randomization, 40 (23.3%) patients in placebo as compared to 55 (32.4%) patients in the eluxadoline group reported continued loperamide use, whereas  $> 40\%$  of patients in each group reported that they had stopped taking loperamide due to lack of improvement in their abdominal and



**Table 1. Patient baseline demographics and characteristics**

	Placebo (n = 174)	Eluxadoline (n = 172)
Age, mean yr (SD)	43.9 (14.2)	43.8 (13.9)
Women, n (%)	119 (68.4)	124 (72.1)
White, n (%)	141 (81.0)	144 (83.7)
Not Hispanic or Latino, n (%)	133 (76.4)	139 (80.8)
Weight, mean kg (SD)	86.3 (24.7)	84.1 (23.7)
Height, mean cm (SD)	168.6 (9.6)	167.7 (10.6)
BMI, mean kg/m <sup>2</sup> (SD)	30.4 (8.3)	29.9 (8.0)
Duration of IBS-D, median yr (Q1, Q3)	7.0 (3.0, 14.7)	6.0 (2.6, 14.0)
Weekly average of daily worst abdominal pain, mean (SD)	6.0 (1.6)	6.3 (1.5)
Stool consistency, BSS, mean (SD)	6.2 (0.4)	6.2 (0.4)
Weekly average of daily abdominal discomfort, mean (SD)	6.2 (1.6)	6.4 (1.5)
Weekly average of daily abdominal bloating, mean (SD)	6.2 (1.9)	6.5 (1.6)
Weekly average of daily number of bowel movement frequency, mean (SD)	4.2 (2.3)	4.0 (1.8)
Weekly average of daily number of urgency episodes, mean (SD)	2.9 (2.4)	2.7 (1.8)
Weekly average of daily number of bowel incontinence episodes, mean (SD)	1.1 (2.0)	1.2 (2.0)
Weekly average of incontinence-free days, mean (SD)	5.3 (1.8)	5.2 (1.8)
Diary compliance, ≥60 entries within 84 days, n (%)	127 (73.4)	131 (76.6)
Diary compliance based on double-blind treatment period (84 days) using the safety population. P-values were not significant ( $P > 0.05$ ) for each parameter; P-values for continuous variables were based on <i>t</i> -test; analysis for categorical variables were based on $\chi^2$ test. BMI, body mass index; BSS, Bristol Stool Scale; IBS-D, irritable bowel syndrome with diarrhea; Q1, first quartile; Q3, third quartile.		

bowel symptoms. Although all patients self-reported overall inadequate symptom relief with prior loperamide use in line with protocol requirement, ~55% and ~42% of patients in each treatment group indicated varying degrees of satisfaction (ranging from “a little satisfied” to “very satisfied”) with individual symptom relief of diarrhea and abdominal pain with loperamide, respectively. Conversely, ~45% and ~58% were “not at all satisfied” with the degree of individual diarrhea and abdominal pain relief, respectively, from prior loperamide use. Similarly, ~55% of patients in each group reported varied satisfaction with decreased urgency and improvement in bowel movement with prior loperamide use, whereas ~45% reported lack of satisfaction. Except for the rates of continued loperamide use, patterns of loperamide usage in the 12 months preceding randomization were balanced between the 2 groups (Table 2).

### Primary endpoint

A statistically significantly greater proportion of eluxadoline-treated patients achieved the primary composite responder endpoint compared with patients treated with placebo (eluxadoline: 22.7% [39/172], placebo: 10.3% [18/174];  $P = 0.002$ ) (Figure 1a). Analysis of the monthly composite endpoint responder population showed that a greater proportion of patients treated with eluxadoline met the composite responder endpoint during each 4-week interval compared to placebo-treated patients (weeks 1–4: 14.0% vs 6.9%,  $P = 0.03$ ; weeks 5–8: 26.7% vs 14.9%,  $P = 0.006$ ; weeks 9–12: 30.8% vs 16.7%,  $P = 0.002$ ) (Figure 1a). Separation of response in the daily composite responders was observed within the initial 14 days of treatment that favored eluxadoline and persisted throughout the study (Figure 1c).

A *post-hoc* analysis of daily composite endpoint responders was performed based on the primary composite endpoint criteria previously used in the phase 3 studies and consistent with FDA guidance for the design and completion of IBS-D trials (daily  $\geq 30\%$  improvement in WAP and daily stool consistency response [BSS score  $< 5$  or the absence of a bowel movement if accompanied by  $\geq 30\%$  improvement in WAP]) (16). A significantly greater proportion of patients treated with eluxadoline met this alternate composite responder endpoint during each of the 4-week intervals and the overall 12-week period as compared to patients treated with placebo (weeks 1–12: 26.2% vs 13.8%,  $P = 0.004$ ; weeks 1–4: 19.2% vs 8.6%,  $P = 0.005$ ; weeks 5–8: 29.7% vs 18.4%,  $P = 0.013$ ; weeks 9–12: 31.4% vs 20.1%,  $P = 0.016$ ) (Figure 1b).

### Key secondary efficacy outcomes

A prespecified analysis of composite responder data was performed for weekly responders for each week up to week 12 with responders defined in 2 ways (see METHODS section for the definitions). During the study, a greater proportion of patients treated with eluxadoline met the criteria for weekly composite responders by both definitions as compared to the placebo group at weeks 4, 5, 6, 7, 9, 11, and 12 (see Figure 3, Supplementary Digital Content 1, <http://links.lww.com/AJG/B246>). Furthermore, as compared to the placebo group, treatment with eluxadoline resulted in a significantly higher proportion of  $\geq 6$ -week composite responders for the analyzed weeks 1–6 (see Figure 4, Supplementary Digital Content 1, <http://links.lww.com/AJG/B246>) and weeks 1–12 (Figure 2) periods during the 12-week treatment period for both responder definitions.

A significantly greater proportion of patients treated with eluxadoline met the abdominal pain response endpoint over the 12-week period as compared with placebo (43.6% [75/172] vs 31.0% [54/174];  $P = 0.02$ ) (Figure 3a). During each 4-week interval, treatment with eluxadoline resulted in improvements in WAP response over placebo (weeks 1–4: 30.2% vs 25.9%,  $P = 0.38$ ; weeks 5–8: 45.9% vs 31.6%,  $P = 0.005$ ; weeks 9–12: 44.8% vs 35.1%,  $P = 0.06$ ). Abdominal pain responder data were further analyzed for patients who met daily 30% and 50% pain response criteria for  $\geq 50\%$  of days with diary entries over either the full 12-week treatment period or the three 4-week intervals. Treatment with eluxadoline resulted in a greater proportion of pain responders with both 30% and 50% improvement in WAP as compared with placebo during the overall 12-week treatment period and over the 4-week intervals (Figures 3b,c). In addition, a significantly greater proportion of patients treated with eluxadoline over the 12-week period were stool consistency

**Table 2.** Patterns of loperamide usage in the 12 months preceding randomization

Question	Response	Placebo (n = 174) n (%)	Eluxadoline (n = 172) n (%)
Patients who took loperamide in the preceding 12 months <sup>a</sup>	Yes	172 (98.9)	170 (98.8)
Frequency “How do (or did) you use this medication?”	Daily	19 (11.0)	23 (13.5)
	As needed	150 (87.2)	144 (84.7)
	Other	3 (1.7)	3 (1.8)
Duration “How long have you taken (or did you take) this medication?”	Less than 1 week	19 (11.0)	33 (19.4)
	Greater than 1 week but less than 1 month	21 (12.2)	20 (11.8)
	Greater than 1 month but less than 3 months	13 (7.6)	17 (10.0)
	Greater than 3 months but less than 6 months	19 (11.0)	17 (10.0)
	Greater than 6 months but less than 1 year	20 (11.6)	16 (9.4)
	Greater than 1 year	80 (46.5)	67 (39.4)
Reason for stopping loperamide “If you stopped taking this medication, what was the reason?” (more than one answer was allowed)	Not applicable (currently taking loperamide)	40 (23.3)	55 (32.4)
	It did not improve my abdominal symptoms	74 (43.0)	67 (39.4)
	It did not improve my bowel symptoms	78 (45.3)	77 (45.3)
	I experienced side effect	8 (4.7)	8 (4.7)
	It costs too much	5 (2.9)	5 (2.9)
	Other	5 (2.9)	7 (4.1)
Satisfaction with diarrheal relief “Overall, how satisfied are (or were) you with the medication’s ability to relieve your diarrhea?”	Not at all satisfied	75 (43.6)	78 (45.9)
	A little satisfied	61 (35.5)	64 (37.6)
	Moderately satisfied	29 (16.9)	22 (12.9)
	Quite satisfied	5 (2.9)	6 (3.5)
	Very satisfied	2 (1.2)	0
Satisfaction with abdominal pain relief “Overall, how satisfied are (or were) you with the medication’s ability to relieve your abdominal pain?”	Not at all satisfied	101 (58.7)	99 (58.2)
	A little satisfied	48 (27.9)	54 (31.8)
	Moderately satisfied	20 (11.6)	14 (8.2)
	Quite satisfied	1 (0.6)	3 (1.8)
	Very satisfied	2 (1.2)	0
Satisfaction with improvements in bowel movements “Overall, how satisfied are (or were) you with the medication’s ability to decrease the number of times you experienced urgency in relation to your bowel movements (sudden, almost irresistible need to have a bowel movement)?”	Not at all satisfied	80 (46.5)	75 (44.1)
	A little satisfied	55 (32.0)	62 (36.5)
	Moderately satisfied	30 (17.4)	27 (15.9)
	Quite satisfied	5 (2.9)	5 (2.9)
	Very satisfied	2 (1.2)	1 (0.6)

<sup>a</sup>A database entry error resulted in the erroneous notation that 2 patients in each group did not take loperamide before study enrollment. The affected sites were queried, and study questionnaires confirmed that all 4 patients took loperamide in the preceding 12 months as required by the inclusion criteria; however, the error was left as recorded since correction of this discrepancy would have required retroactive correction of source data.

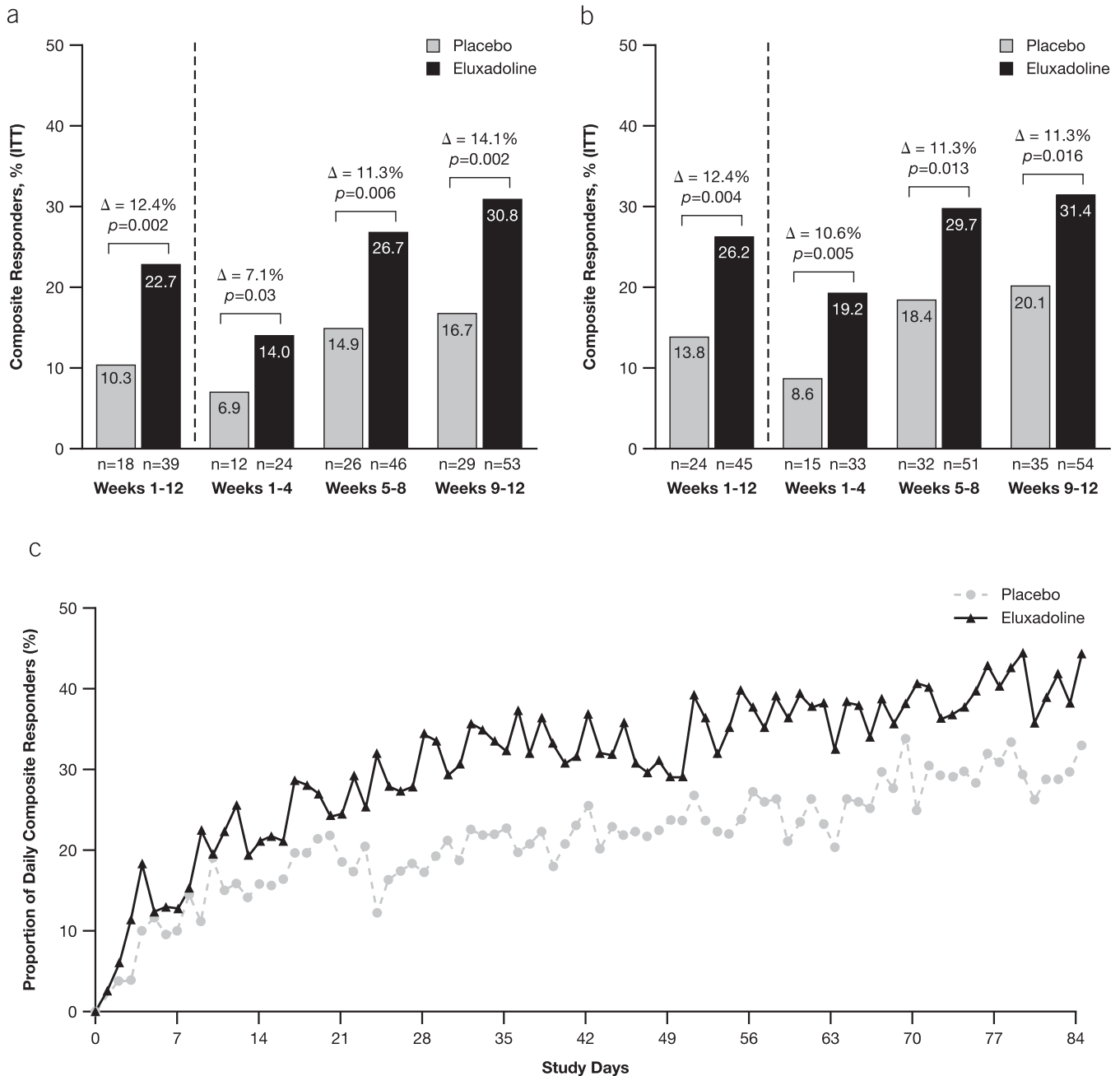
responders as compared with placebo (27.9% [48/172] vs 16.7% [29/174];  $P = 0.01$ ) (Figure 3d). During each of the 4-week intervals, greater improvements in stool consistency response were observed with eluxadoline as compared to placebo. Collectively, these data demonstrated greater symptom improvement in key secondary endpoints throughout the 12-week treatment period with eluxadoline as compared to placebo. A summary of key efficacy endpoints is provided in Supplementary Table 2 (see Supplementary Digital Content 1, <http://links.lww.com/AJG/B246>).

### Safety and tolerability

A total of 112 TEAEs were reported in the placebo group and 124 TEAEs in the eluxadoline group. The proportion of patients reporting at least one TEAE was comparable with eluxadoline (37.4% [64/171]) and placebo (35.3% [61/173]) (Table 3). Higher

rates of treatment-related TEAEs were reported in the eluxadoline group (15.8% [27/171]) as compared to the placebo group (5.8% [10/173]). TEAEs leading to premature treatment discontinuations and study discontinuations were higher in the eluxadoline group (5.8% [10/171] and 2.9% [5/171], respectively) compared to the placebo group (1.7% [3/173] and 0.6% [1/171], respectively), whereas a higher rate of severe TEAEs was reported in the placebo group (2.9% [5/173]) as compared to the eluxadoline group (1.8% [3/171] [Table 3]). Three patients in the placebo group (1.7%) and 1 patient in the eluxadoline group (0.6%) experienced serious TEAEs (summarized in Table 3, Supplementary Digital Content 1, <http://links.lww.com/AJG/B246>), none of which were related to treatment.

Gastrointestinal AEs (GIAEs) were the most common treatment-emergent events, with a higher rate reported in the eluxadoline group (17.0% [29/171]) as compared to the placebo



**Figure 1.** Analyses of composite responders. **(a)** Composite endpoint of daily responders (i.e., patients who meet daily composite response criteria on  $\geq 50\%$  of days, defined as  $\geq 40\%$  improvement in WAP compared with baseline and BSS score  $< 5$  [or the absence of a bowel movement if accompanied by  $\geq 40\%$  improvement in WAP]). Monthly composite responders are patients who met the daily composite response criteria on  $\geq 50\%$  of days and had a minimum of 20 days of diary entries for each 4-week interval. **(b)** A post-hoc analysis of composite responders defined at  $\geq 30\%$  improvement in WAP compared with baseline pain and daily stool consistency response. For both analyses, any patient with fewer than 20 days of diary entries for the 4-week interval was considered as a nonresponder. **(c)** Daily composite responders ( $\geq 40\%$  WAP improvement and BSS score  $< 5$ ) over time. BSS, Bristol Stool Scale; WAP, worst abdominal pain. *P*-values are based on  $\chi^2$  test.

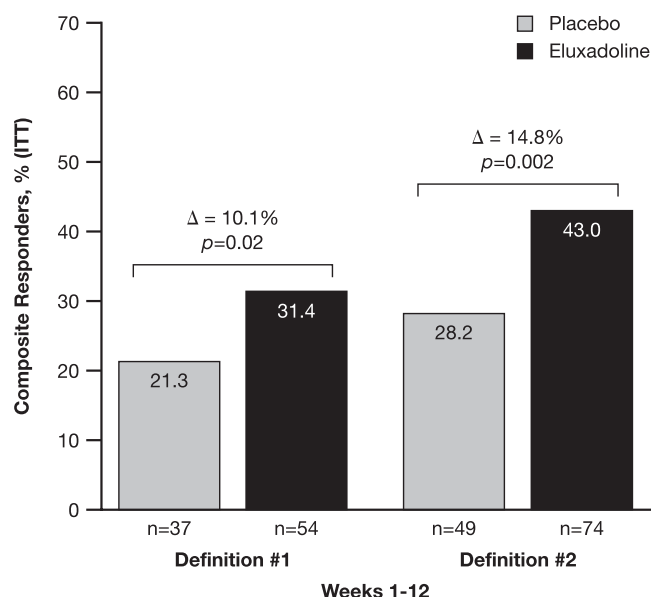
group (6.4% [11/173]). Most GIAEs were mild-to-moderate in intensity, with 3 severe events reported in the eluxadoline group (Table 3). Of these, 1 event (pancreatic mass) was a serious AE, which was unrelated to treatment, from which the patient recovered and the drug was withdrawn. Of all TEAEs, nausea was the most common event at 5.8% (10/171) in the eluxadoline group as compared to the 2.9% (5/173) reported in the placebo

group. A summary of TEAEs  $\geq 2\%$  in any group is provided by preferred term in Table 3. No episodes of pancreatitis or sphincter of Oddi spasm were reported in the study.

## DISCUSSION

Loperamide, a  $\mu$ -OR agonist that reduces the frequency of bowel movements and improves stool consistency, is





**Figure 2.** Weekly composite responder during the 12-week treatment period, and for at least 6 weeks out of 12 weeks from weeks 1–12 by 2 definitions. Definition #1 = weekly composite responder is defined as daily composite responder on  $\geq 4$  days for a week. Daily composite responder = WAP improvement by  $\geq 40\%$  compared with baseline and BSS score  $< 5$  (or the absence of bowel movement if accompanied by  $\geq 40\%$  improvement in WAP) compared to baseline. Definition #2 = weekly composite responder is defined as patients with weekly average WAP improvement of  $\geq 40\%$  from average WAP of the baseline week and with  $\geq 50\%$  reduction in the days of BSS score 6/7 for a week comparing with days of BSS score 6/7 during the baseline week. BSS, Bristol Stool Scale; WAP, worst abdominal pain. *P*-values are based on  $\chi^2$  test.

frequently used as a first-line agent for IBS-D. However, studies have revealed that loperamide is ineffective in treating the abdominal symptoms of IBS (1,7–11). Use of IBS treatments with limited efficacy may result in additional medical visits, investigations, and adoption of other therapeutic approaches, including agents with minimal evidence of benefit (17,18). Such “treatment-failure” patients are challenging to treat, as diminishing returns often are experienced with additional therapeutic interventions; moreover, these patients frequently suffer from higher psychological and nonpain comorbidities, further complicating their treatment (19). In the present study, most patients reported use of other anti-diarrheals, antidepressants, anticholinergics, and lifestyle modifications before enrollment, indicating a clear need for safe and effective agents that achieve sustained global relief of IBS-D earlier and more efficaciously.

In this multicenter, randomized, controlled phase 4 study of eluxadoline vs placebo in patients with IBS-D who reported inadequate symptom control with loperamide in the 12 months preceding the study, we found that a significantly greater proportion of patients receiving eluxadoline achieved daily improvement in abdominal pain ( $\geq 40\%$ ) and stool consistency ( $< 5$  BSS score, or absence of bowel movement) for at least 50% of treatment days. These improvements were observed within the initial 4 weeks of treatment and sustained until the end of the study. Similarly, the monthly composite responder endpoints were met by a higher proportion of

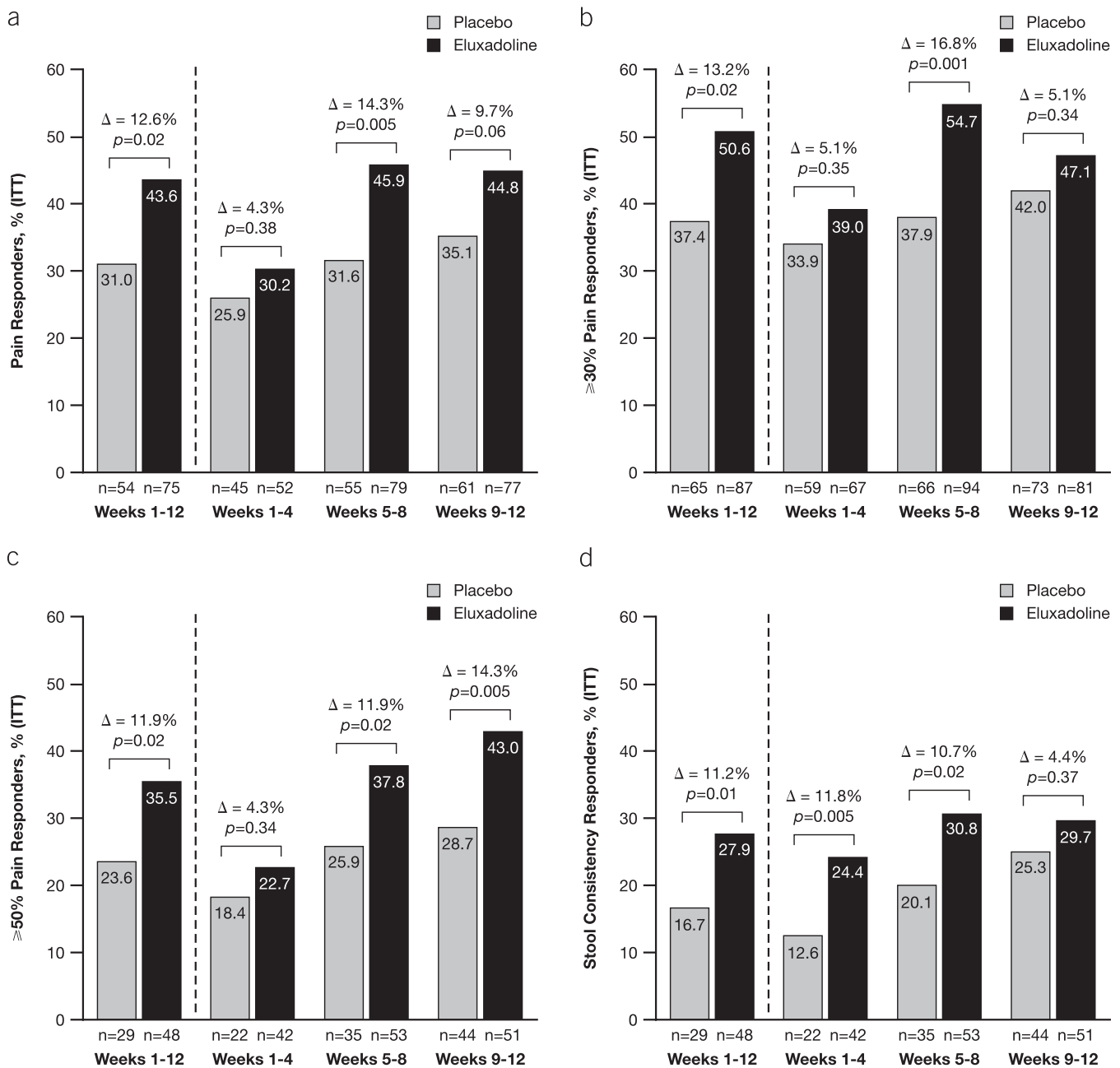
eluxadoline-treated patients than those who received placebo. A higher percentage of patients receiving eluxadoline also achieved the secondary endpoints of improvements in stool consistency and abdominal pain compared to placebo.

In the two phase 3 studies (IBS-3001 [52-week treatment] and IBS-3002 [26-week treatment]) evaluating the safety and efficacy of eluxadoline, the primary composite endpoint was defined as a concurrent  $\geq 30\%$  improvement in daily abdominal pain score compared with baseline and a BSS score  $< 5$  on at least 50% of days within a 12-week treatment period (FDA endpoint) and a 26-week treatment period (European Medicines Agency endpoint) (13). In both studies, eluxadoline demonstrated significantly greater composite responder rates compared to placebo over the respective treatment periods. Subsequently, a retrospective analysis of these phase 3 data was performed to evaluate the efficacy of eluxadoline in patients who had been previously treated with loperamide (15). Over one-third of patients (873/2,428) in the phase 3 studies reported prior loperamide use, among whom nearly 60% (538/873) self-reported inadequate loperamide symptom control; in this subpopulation, a significantly greater proportion were composite responders following treatment with 100 mg of eluxadoline compared to placebo over 12 weeks (15). Similar to the retrospective analysis of phase 3 trial data, a significantly greater proportion of loperamide-unresponsive patients in the current prospective study met the responder criteria with eluxadoline as compared to placebo over 12 weeks of treatment. Notably, in the current trial, a more stringent definition was set for daily clinical responders as a patient with IBS-D had to achieve  $\geq 40\%$  improvement in WAP. Despite this more stringent endpoint, the results herein are similar to those observed in the phase 3 trials.

We also performed a *post-hoc* analysis using the phase 3 study primary endpoint criteria ( $\geq 30\%$  WAP improvement and a reduction to  $< 5$  in the BSS score) and found that a significantly higher proportion of eluxadoline-treated patients achieved this FDA-mandated composite responder criteria compared to placebo over 12 weeks of treatment. Moreover, a similar treatment effect on the 12-week primary endpoint was also achieved for the phase 3 subpopulation who reported lack of adequate symptom control with prior loperamide use at 12 and 26 weeks (15). Therefore, the reproducibility of the phase 3 analysis in the current study further substantiates the positive treatment effect of eluxadoline on the composite endpoint and in the context of previous loperamide failure.

IBS and its range of symptoms are often difficult to treat; however, these collective data show favorable results in the patient population who have failed loperamide, a treatment often used as standard of care. The positive outcomes of this study in a real-world setting suggest that eluxadoline may be an option for those who have previously used loperamide.

Abdominal pain, a major clinical feature of IBS, is often the most challenging to treat and is closely linked to disease severity (20–22). Analysis of a  $\geq 40\%$  improvement in abdominal pain threshold over 12 weeks demonstrated a significantly higher responder rate in the eluxadoline group compared to placebo. Significant differences were maintained when the data were imputed using  $\geq 30\%$  abdominal pain improvement criteria as was used in the phase 3 studies, as well as for the



**Figure 3.** Analysis of pain and stool consistency responders. (a) Monthly pain responders (i.e., patients who met the daily pain response criteria for  $\geq 50\%$  of days with diary entries over a certain time period, defined for the full 12-week treatment period [ $\geq 60$  days of diary entries for the full 12 weeks] and each 4-week interval [ $> 20$  days of diary entries for each 4-week interval]) as  $\geq 40\%$  improvement in WAP compared with baseline). Analysis of responders who met the daily (b) 30% and (c) 50% improvement in WAP. (d) Analysis of monthly stool consistency responders (i.e., patients who met the daily stool consistency for  $\geq 50\%$  of days with diary entries over a certain time period, defined for the full 12-week treatment period [ $\geq 60$  days of diary entries for the full 12 weeks] and each 4-week interval [ $> 20$  days of diary entries for each 4-week interval]) compared with baseline. WAP, worst abdominal pain. P-values are based on  $\chi^2$  test.

stricter  $\geq 50\%$  abdominal pain improvement pain response. These data are generally in line with the phase 3 studies, which showed that the  $\geq 30\%$  abdominal pain response component showed an improvement, although not statistically significant, for eluxadoline over placebo in the overall population. The experience of abdominal pain in IBS is complex and is influenced by a multitude of patient factors, including psychological comorbidity, previous abuse experiences, and non-

GI pain comorbidities. Additionally, environmental factors including diet and stress can further modulate these symptom experiences (23). Data from the current study showed significant improvements in abdominal pain across a wide range of subjective pain endpoints. Stool consistency response was also similar to the primary composite rate over the 12-week treatment period, and collectively, our data suggest that the overall response of the composite endpoint was driven by

**Table 3. Summary of treatment-emergent adverse events**

	Placebo (n = 173) n (%)	Eluxadoline (n = 171) n (%)
Total number of TEAEs	112	124
Patients with at least one TEAE	61 (35.3)	64 (37.4)
Treatment-related TEAE	10 (5.8)	27 (15.8)
Treatment discontinuations due to a TEAE	3 (1.7)	10 (5.8)
Study discontinuations due to a TEAE	1 (0.6)	5 (2.9)
Severe TEAE	5 (2.9)	3 (1.8)
Treatment-emergent serious AE	3 (1.7)	1 (0.6)
GIAEs	11 (6.4)	29 (17.0)
Severe	0	3 (1.8)
Vomiting	0	1 (0.6)
Abdominal distension	0	1 (0.6)
Pancreatic mass	0	1 (0.6)
Moderate	6 (3.5)	10 (5.8)
Mild	5 (2.9)	16 (9.4)
TEAEs $\geq 2\%$ in any group		
Nausea	5 (2.9)	10 (5.8)
Constipation	2 (1.2)	8 (4.7)
Nasopharyngitis	4 (2.3)	6 (3.5)
Influenza	4 (2.3)	5 (2.9)
Sinusitis	2 (1.2)	5 (2.9)
Headache	1 (0.6)	5 (2.9)
Upper respiratory tract infection	0	5 (2.9)
Abdominal pain	3 (1.7)	4 (2.3)
Vomiting	1 (0.6)	4 (2.3)
Blood creatinine increased	2 (1.2)	4 (2.3)
Pancreatitis episodes	0	0
Sphincter of Oddi spasm	0	0
Deaths	0	0

TEAE is defined as any AE with a start date that is on or after the start date of study medication, or any preexisting AE worsened either in intensity or frequency after taking the first dose of the study medication. Serious AEs were classified based on seriousness (i.e., if it resulted in death, was life-threatening, resulted in inpatient hospitalization or prolongation of existing hospitalization, was persistent or caused significant disability/incapacity, or resulted in a congenital anomaly/birth defect). Severity of AEs was based on intensity (i.e., mild, moderate, severe, or not applicable if it cannot be graded) and how it impacted usual activity.

AE, adverse event; GIAE, gastrointestinal AE; TEAE, treatment-emergent adverse event.

significantly higher response in stool consistency in the early-to-mid timepoints and by significant improvements in abdominal pain in the mid-to-later timepoints of the trial. The mechanistic basis for these observed differences with the mixed  $\mu$ -OR agonist eluxadoline has not been fully elucidated but are presumed related to the combined  $\kappa$ -opioid receptor agonist and  $\delta$ -OR antagonist characteristics unique to this agent.

The most common TEAEs in the study were GI, indicative of the local (GI) pharmacological effects of eluxadoline. GIAEs, including nausea, constipation, abdominal pain, and vomiting, were reported more frequently in the eluxadoline than the placebo group. Most GIAEs in the present study were mild or moderate in intensity. Three severe events were reported in the eluxadoline group, including vomiting, abdominal distension, and pancreatic mass, which were adjudicated as unrelated to eluxadoline. The single serious AE reported in the eluxadoline cohort was a pancreatic mass in a patient with a history of chronic alcohol consumption. This was assessed by investigators as unrelated to treatment, but treatment was withdrawn, and the pancreatic mass resolved without sequelae. It is noteworthy that no cases of pancreatitis or sphincter of Oddi spasm were reported in the present study.

In summary, results of the current study demonstrate positive treatment benefits for eluxadoline over placebo in patients with IBS-D reporting inadequate symptom relief from loperamide, based on improvements in both abdominal pain and stool consistency, the cardinal symptoms of IBS. Moreover, the safety profile of eluxadoline was comparable to placebo, with no new safety concerns identified. We conclude that this study prospectively validates previous findings revealing eluxadoline to be a safe, effective IBS-D treatment in patients reporting inadequate symptom relief with prior loperamide use.

## ACKNOWLEDGEMENTS

The sponsor and authors would like to thank study participants and their families, the study investigators, research coordinators, and study staff.

## CONFLICTS OF INTEREST

**Guarantor of the article:** Darren M. Brenner, MD.

**Specific author contributions:** D.M.B., C.R.G., and E.J. contributed to the study concept and design. D.M.B. and L.W.C.L. were principal investigators and supervised study-related activities at respective study sites. D.M.B., G.S.S., C.R.G., S.J.R.E., L.W.C.L., and B.D.C. contributed to the analysis and interpretation of data. All authors contributed to the drafting, critical revision for intellectual content, and final approval of the manuscript.

**Financial support:** This study was sponsored by Allergan plc, Dublin, Ireland. Writing and editorial assistance was provided to the authors by Germaine D. Agollah, PhD of Allergan plc and editorial assistance was also provided by Complete HealthVizion, Chicago, IL, USA. All authors met the ICMJE authorship criteria. Neither honoraria nor payments were made for authorship.

**Potential competing interests:** Financial arrangements of the authors with companies whose products may be related to the present report are listed below, as declared by the authors. D.M.B. and G.S.S. are both consultants and speakers for Allergan plc and Ironwood Pharmaceuticals. C.R.G., E.J., and S.J.R.E. are full-time employees of Allergan plc and may own company stock. L.W.C.L. has received honoraria from Allergan, Lupin, Medtronic, AbbVie, and Takeda as a consultant and speaker, from Knight and Pendopharm as a speaker, and from Cipher as a consultant. B.D.C. has served as an advisor, consultant, or speaker for Allergan plc, Salix Pharmaceuticals, Takeda Pharmaceuticals, and Ironwood Pharmaceuticals.

## Study Highlights

### WHAT IS KNOWN

- ✓ Eluxadoline is an FDA-approved therapy for the treatment of IBS-D.
- ✓ In *post-hoc* analyses of phase 3 clinical trials, patients failing to experience improvements in their IBS symptoms from loperamide appeared to derive symptomatic benefits from eluxadoline.

### WHAT IS NEW HERE

- ✓ Eluxadoline improves IBS-D symptoms in individuals subjectively reporting inadequate responses to loperamide.
- ✓ Eluxadoline improves both pain and bowel functions in individuals reporting inadequate responses to loperamide.
- ✓ In a population of individuals with IBS-D with an intact gallbladder, no events of sphincter of Oddi spasm or pancreatitis occurred while taking eluxadoline.

## REFERENCES

- Chey WD, Kurlander J, Eswaran S. Irritable bowel syndrome: A clinical review. *JAMA* 2015;313:949–58.
- Longstreth GF, Thompson WG, Chey WD, et al. Functional bowel disorders. *Gastroenterology* 2006;130:1480–91.
- Lovell RM, Ford AC. Global prevalence of and risk factors for irritable bowel syndrome: A meta-analysis. *Clin Gastroenterol Hepatol* 2012;10:712–21 e4.
- Ruppin H. Review: loperamide—a potent antidiarrhoeal drug with actions along the alimentary tract. *Aliment Pharmacol Ther* 1987;1:179–90.
- Sayuk GS, Wolf R, Chang L. Comparison of symptoms, healthcare utilization, and treatment in diagnosed and undiagnosed individuals with diarrhea-predominant irritable bowel syndrome. *Am J Gastroenterol* 2017;112:892–9.
- Ford AC, Moayyedi P, Chey WD, et al. American College of Gastroenterology monograph on management of irritable bowel syndrome. *Am J Gastroenterol* 2018;113:1–18.
- Efskind PS, Bernklev T, Vatn MH. A double-blind placebo-controlled trial with loperamide in irritable bowel syndrome. *Scand J Gastroenterol* 1996;31:463–8.
- Talley NJ. Evaluation of drug treatment in irritable bowel syndrome. *Br J Clin Pharmacol* 2003;56:362–9.
- Talley NJ. Pharmacologic therapy for the irritable bowel syndrome. *Am J Gastroenterol* 2003;98:750–8.
- Chang L, Lembo A, Sultan S. American Gastroenterological Association Institute Technical Review on the pharmacological management of irritable bowel syndrome. *Gastroenterology* 2014;147:1149–72 e2.
- Ford AC, Moayyedi P, Lacy BE, et al. American College of Gastroenterology monograph on the management of irritable bowel syndrome and chronic idiopathic constipation. *Am J Gastroenterol* 2014;109(Suppl 1):S2–26; quiz S27.
- US Food and Drug Administration. Viberzi. Highlights of prescribing information ([https://www.accessdata.fda.gov/drugsatfda\\_docs/label/2015/206940s000lbl.pdf](https://www.accessdata.fda.gov/drugsatfda_docs/label/2015/206940s000lbl.pdf)) (2015). Accessed April 26, 2018.
- Lembo AJ, Lacy BE, Zuckerman MJ, et al. Eluxadoline for irritable bowel syndrome with diarrhea. *N Engl J Med* 2016;374:242–53.
- Wade PR, Palmer JM, McKenney S, et al. Modulation of gastrointestinal function by MuDelta, a mixed micro opioid receptor agonist/micro opioid receptor antagonist. *Br J Pharmacol* 2012;167:1111–25.
- Lacy BE, Chey WD, Cash BD, et al. Eluxadoline efficacy in IBS-D patients who report prior loperamide use. *Am J Gastroenterol* 2017;112:924–32.
- US Food and Drug Administration. Guidance for Industry—Irritable Bowel Syndrome—Clinical Evaluation of Drugs for Treatment. (<https://www.fda.gov/media/78622/download>) (2012). Accessed July 15, 2019.
- Pare P, Gray J, Lam S, et al. Health-related quality of life, work productivity, and health care resource utilization of subjects with irritable bowel syndrome: Baseline results from LOGIC (Longitudinal Outcomes Study of Gastrointestinal Symptoms in Canada), a naturalistic study. *Clin Ther* 2006;28:1726–35; discussion 1710–1.
- Mayer EA. Clinical practice. Irritable bowel syndrome. *N Engl J Med* 2008;358:1692–9.
- Sayuk GS, Elwing JE, Lustman PJ, et al. Predictors of premature antidepressant discontinuation in functional gastrointestinal disorders. *Psychosom Med* 2007;69:173–81.
- Lembo A, Ameen VZ, Drossman DA. Irritable bowel syndrome: Toward an understanding of severity. *Clin Gastroenterol Hepatol* 2005;3:717–25.
- Spiegel B, Strickland A, Naliboff BD, et al. Predictors of patient-assessed illness severity in irritable bowel syndrome. *Am J Gastroenterol* 2008;103:2536–43.
- Spiegel B, Bolus R, Harris LA, et al. Measuring irritable bowel syndrome patient-reported outcomes with an abdominal pain numeric rating scale. *Aliment Pharmacol Ther* 2009;30:1159–70.
- Törnblom H, Drossman DA. Centrally targeted pharmacotherapy for chronic abdominal pain. *Neurogastroenterol Motil* 2015;27:455–67.

**Open Access** This article is licensed under a Creative Commons Attribution-NonCommercial-NoDerivatives 4.0 International License, which permits any non-commercial use, sharing, distribution and reproduction in any medium or format, as long as you give appropriate credit to the original author(s) and the source, and provide a link to the Creative Commons license. You do not have permission under this license to share adapted material derived from this article or parts of it. The images or other third party material in this article are included in the article's Creative Commons license, unless indicated otherwise in a credit line to the material. If material is not included in the article's Creative Commons license and your intended use is not permitted by statutory regulation or exceeds the permitted use, you will need to obtain permission directly from the copyright holder. To view a copy of this license, visit <http://creativecommons.org/licenses/by-nc-nd/4.0/>.