

Washington University School of Medicine

Digital Commons@Becker

---

PACS News

Program in Audiology and Communication  
Sciences

---

1963

## PACS Bulletin SU 1963-1964

Program in Audiology and Communication Sciences  
*Washington University School of Medicine*

Follow this and additional works at: [https://digitalcommons.wustl.edu/pacs\\_newsletters](https://digitalcommons.wustl.edu/pacs_newsletters)

---

### Recommended Citation

Program in Audiology and Communication Sciences, "PACS Bulletin SU 1963-1964" (1963). *PACS News*. Paper 86.  
[https://digitalcommons.wustl.edu/pacs\\_newsletters/86](https://digitalcommons.wustl.edu/pacs_newsletters/86)

This Newsletter is brought to you for free and open access by the Program in Audiology and Communication Sciences at Digital Commons@Becker. It has been accepted for inclusion in PACS News by an authorized administrator of Digital Commons@Becker. For more information, please contact [vanam@wustl.edu](mailto:vanam@wustl.edu).

## Recreation

The City of St. Louis affords excellent opportunities for recreation and cultural activities. The location of the Institute across from Forest Park places facilities for walking, boating, tennis, golf, and riding at the easy disposal of the student. The park also contains an outstanding zoo and an excellent art museum.

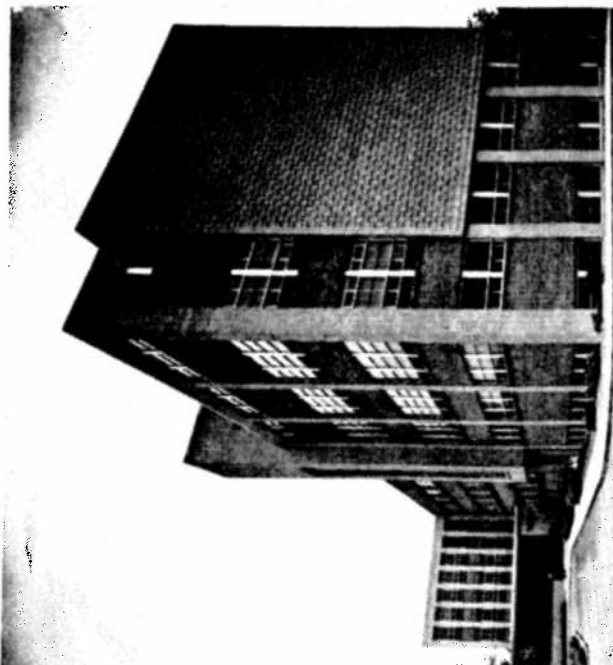
Special summer attractions include outdoor symphony concerts at Washington University, the renowned outdoor St. Louis Municipal Opera in Forest Park, and major league baseball.

62      62      62

For information or applications please write to

Frank R. Kleffner  
Central Institute for the Deaf  
818 So. Kingshighway  
St. Louis 10, Missouri

Clinics and Research Building  
Central Institute for the Deaf



## Staff for the Summer Sessions

### Instructor

Frank R. Kleffner, Ph.D., Director  
Division of Speech Correction and Pathology, Central Institute  
Associate Professor of Speech Pathology,  
Washington University

### Resource Personnel

Persons who will be available for consultation and who will give lectures or demonstrations on related topics throughout the course:

- Miss Mildred A. McGinnis  
Director Emeritus  
Division of Speech Pathology,  
Central Institute
- Mrs. Virginia Armbruster  
Division of Speech Pathology,  
Central Institute
- Hallowell Davis, M.D., Sc.D.  
Director of Research, Central Institute  
Professor of Otolaryngology, Professor  
of Physiology, Washington University  
School of Medicine
- Robert Goldstein, Ph.D.  
Director of Audiology, Jewish Hospital  
of St. Louis, Assistant Professor of  
Audiology, Washington University
- Wm. M. Landau, M.D.  
Associate Professor of Neurology, Wash-  
ington University School of Medicine
- Mrs. Helen S. Lane, Ph.D.  
Principal, Central Institute  
Associate Professor of Psychology,  
Washington University
- Irvin Shore, M.A.  
Director, Hearing Clinics,  
Central Institute
- S. Richard Silverman, Ph.D.  
Director, Central Institute  
Professor of Audiology,  
Washington University

(see Post)

## "The Assessment and Teaching of Aphasic Children"



a summer course offered by

## CENTRAL INSTITUTE FOR THE DEAF

affiliated with Washington University

St. Louis, Missouri

June 17 through July 26  
1963



### **Description of the course**

The course presents in detail the "CID McGinnis method" for teaching speech and language to aphasic children and to children with severe linguistic deficiencies not primarily the result of hearing loss or mental retardation. There will be lectures, demonstrations and opportunities to observe and participate in the teaching of children at the Institute.

Demonstration classes will be in session throughout the entire course. The children attending the demonstration classes will be selected to represent the various age groups, and levels of progress. These children will be available individually and as class-groups for demonstration, observation, and supervised practice teaching.

There also will be new cases available for the demonstration of initial assessment and evaluation. These initial evaluations will include auditory and psychological tests and assessment of speech and language. Among the specific procedures which will be considered in relation to the testing of young children with linguistic disorders will be the F.E.G., E.D.R. (PGSR), conventional audiometry, neurological tests, mental and school achievement tests.

The course will meet from 8:00 a.m. to 12:00 noon Monday through Friday with lectures in the air-conditioned auditorium of the Clinic and Research building at Central Institute.

### **Fees and academic credit**

Six credits from the graduate school of Arts and Sciences of Washington University will be given. The fee for the course is \$175.00, which includes tuition, registration fee, and a fee for the laboratory school.

The Institute is accredited to accept veterans of World War II and the Korean War.

### **Enrollment**

Enrollment will be limited. Applications are encouraged from teachers of exceptional children, particularly teachers of the deaf and hard of hearing, and speech therapists. The general requirement for enrollment is a degree, plus preparation in one or more of the above mentioned areas of special education.

Persons interested in enrolling for this course are urged to apply as soon as possible since enrollment must be limited.

The administrative office reserves the right to dismiss a student who fails to show professional promise or who is guilty of infraction of rules or regulations.

**Demonstration classes will be in session throughout the six weeks.**



**New Residence Hall at  
Central Institute.**

### **Living accommodations**

Dormitory space is available in the Institute's new air-conditioned residence hall for the fee of \$60.00 for the six weeks. All rooms are double and, in general, there will be two persons in each room. Lamens are furnished, laundry facilities, and study and lounge areas are provided.

Reasonably priced meals are available within easy walking distance of the Institute at the cafeteria of the Washington University Medical School.

The names of hotels and apartment hotels in the vicinity of the Institute will be furnished upon request.

### **Library facilities**

The Institute houses in the Clinic and Research building one of the most outstanding libraries in the nation devoted to speech and hearing and related fields. In this same building are the significant Max A. Goldstein collections that include specimens showing the evolution of the non-electrical hearing aid and early editions of books dealing with speech and hearing. The air-conditioned auditorium will be available as a reading room for students using the library.

Also available within two blocks of the Institute are the libraries of the Dental and Medical Schools of Washington University.