

Washington University School of Medicine

Digital Commons@Becker

Washington University Record

Washington University Publications

4-5-1984

Washington University Record, April 5, 1984

Follow this and additional works at: <https://digitalcommons.wustl.edu/record>

Recommended Citation

Washington University Record, April 5, 1984. Bernard Becker Medical Library Archives.
<https://digitalcommons.wustl.edu/record/301>.

This Article is brought to you for free and open access by the Washington University Publications at Digital Commons@Becker. It has been accepted for inclusion in Washington University Record by an authorized administrator of Digital Commons@Becker. For more information, please contact vanam@wustl.edu.



A Thurtene Carnival ride at night becomes a whirling disc of light, attracting the brave and the curious. This year's carnival will be held on April 13 and 14.

Thurtene's carnival celebrates 50th year

Thurtene Carnival, WU's annual rite of spring, will be held Friday and Saturday, April 13 and 14, on the campus parking lot at the corner of Millbrook and Skinker blvds. The carnival will be open from 6 to 11 p.m. on Friday and noon to 11 p.m. on Saturday. In the event of rain, the carnival will resume on Sunday.

This year, the carnival will celebrate the 80th anniversary of the founding of Thurtene, a junior men's honorary society, and the 50th anniversary of Thurtene's sponsorship of the carnival. The carnival's attractions will include midway games, original musical skits, concessions, rides and a wide variety of sideshow activities.

The proceeds from this year's carnival will be donated to the St. Louis Multiple Sclerosis Society to help pay future medical expenses for Joan E. Elliott, 30, of Manchester, Mo., who has multiple sclerosis. Elliott, a graduate of Parkway West High School, currently works at AT&T Technologies of St. Louis.

In addition, underprivileged children and children with multiple sclerosis from many areas of St. Louis will attend the carnival Saturday as guests of Thurtene.

Hailed as the largest student-run carnival in the country, Thurtene Carnival attracted more than 100,000

people in 1983. Admission to the carnival grounds is free.

Founded in 1904, Thurtene is a secret society, which, in its early years, did not disclose either its activities or its membership. The history of the carnival is just as mysterious. There was an annual carnival, called "Univee Surkuss," that was held intermittently when the University was located downtown. Thurtene assumed sponsorship of the carnival in 1933 and called it Thurtene Carnival.

The current members of Thurtene are: Frank Mackris of St. Louis, president; Jose Sanches of Guaynabo, Puerto Rico, vice president; Daniel Sullivan of Bethesda, Md., vice president; Larson Stiegemeier of Cape Girardeau, Mo., treasurer; Gary Harper of St. Peters, Mo., external business officer; Kirk Williams of Overland Park, Kan., internal business officer; Hal Barron of Cincinnati, Ohio, electrical; John Dacey of Dallas, Texas, construction; Rick Harrison of St. Louis, and Dan Sutton of Emmetsburg, Iowa, both security; Harvey Taub of Plainview, N.Y., charity; Mark Gerber of Orange, Calif., and Russell Shaw of Tempe, Ariz., both public relations.

James R. Burmeister, director of alumni services, is Thurtene's faculty advisor.

Welfare rights organization founder to deliver Youngdahl lecture

Richard A. Cloward, professor at the Columbia University School of Social Work, will deliver the Benjamin E. Youngdahl Lecture in Social Policy at 7 p.m. Thursday, April 12, in Brown Hall Auditorium. The lecture is sponsored by WU's George Warren Brown School of Social Work.

Cloward, a leader of the Human SERVE (Service Employees' Registration and Voter Education) Campaign, will speak on "Political Mobilization and the Welfare State." A reception in Brown Hall Lounge will follow his lecture. Both events are free and open to the public.

Cloward is the author of many books and articles on major social problems. He frequently publishes in scholarly and professional journals and in national magazines like *The Nation*, *The New Republic* and *The Saturday Review of Literature*.

His books include *Delinquency and Opportunity: A Theory of Delinquent Gangs*, for which he received the Dennis Carroll Award from the International Society of Criminology; *Regulating the Poor: The Functions of Public Welfare*, which was named among 40 "Outstanding Books of 1971" by the New York Public Library; *Poor People's Movements: Why They Win, How They Fail*; and *The New Class War: Reagan's Attack on the Welfare State*, his most recent.

Cloward was a founder of Mobilization for Youth, a forerunner of the Office of Economic Opportunity Community Action Programs, and

the National Welfare Rights Organization, a grass-roots organization for welfare recipients. He is a member of the board of the New York Civil Liberties Union and the Poverty/Rights Action Center.

The Benjamin E. Youngdahl Lecture is given annually to honor the memory of Youngdahl, former dean of the George Warren Brown School of Social Work from 1945 until his retirement in 1962. He received national recognition in the field of social work, and during his career was an outspoken advocate of civil liberties. Youngdahl died in September 1970.



Richard A. Cloward

Baseball field named for Leo Kelly

One of the first phases of the new \$13 million sports complex is the baseball field. Located on the South-40 across from the football stadium, the field will be dedicated at noon on Saturday, April 7, in memory of WU's former baseball coach, the late Leo Kelly.



Leo Kelly

One of the most respected and beloved coaches ever on the WU staff, Kelly died on May 14, 1982, at the age of 51.

The ceremonies will include the unveiling of a plaque of Kelly, the introduction of Mrs. Kelly and her two daughters, remarks by Chancellor William F. Danforth and Athletic Director John Schael, and the throwing out of the first ball by Danforth. Kelly's widow is Mickey Hanawalt Kelly, and his daughters are Nichola Story and Cheryl Salami.

Leo Kelly was named head baseball coach and assistant football coach at WU in 1968, and in 1973 became assistant athletic director. He held all three positions until his death.

Prior to joining WU, Kelly was head tennis coach, assistant football coach, and counselor in the Dean of Men's Office at Rose Polytechnic Institute in Terre Haute, Ind. from 1963 to 1968.

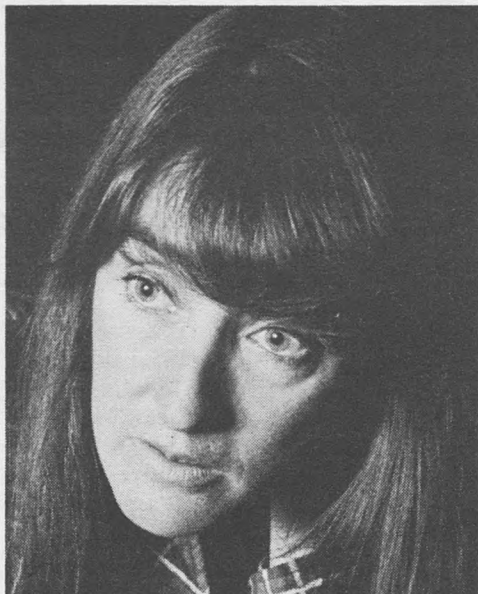
Kelly graduated from Hanover College (Indiana) in 1952 with a major in physical education and a minor in sociology. He received an MS degree from the University of Indiana in 1955, with a major in physical education and a minor in health and safety.

From 1952-54, Kelly was a platoon sergeant and drill instructor in base training for the U.S. Army at Ft. Gordon, Ga.

Continued on p. 2



Diane Ackerman



Sylvia Wilkinson

Writers find inspiration on the track, in the air

Everyone has a story to tell. There are those, however, who are driven to putting pen to paper to share the account. Sylvia Wilkinson and Diane Ackerman, visiting professors of fiction and non-fiction respectively, are two such writers who have come to WU for the spring semester to teach and practice their craft.

They have brought with them literary honors and many publications: Wilkinson, her novels spun of childhood experiences in Durham, N.C.; Ackerman, her poetry of the universe.

Much of the inspiration Wilkinson attributes to her decision to become a writer came from stories told by her maternal grandmother, Mama George. "She was a farm woman with a third-grade education, but she was a storyteller with a natural sense of form and drama," said Wilkinson, who was raised on these family stories and on cowboy movie.

Wilkinson's five novels revolve around young characters and contain seeds of real incidents in her life. These events, says Wilkinson, must become a memory before her imagination can act upon them. The process of establishing objectivity, she added, could take years before the experience can be worked into fiction.

An auto racing enthusiast for many years, Wilkinson finds escape in the world of racecar driving — a necessary diversion from what she describes as "the internal struggle of fiction writing." Her non-fiction books, with titles like *The Stainless Steel Carrot* and *Dirt Tracks to Glory*, were written in order to "keep up the momentum between novels."

For Ackerman, professor of English at the University of Pittsburgh, words have always been the way in which she organized her world. She began writing at age 5, and after many mornings viewing "My Friend Flicka," "Sky King" and "Fury," she put together a neighborhood newspaper of horse stories.

Ackerman is no less adventure-some today. "Writing poetry is the way I inquire about the world, the way I celebrate it. I have a very nomadic curiosity; it's always picking up its tent and pitching it someplace else."

Ackerman's curiosity has led her

from working as a cowhand for a year at a cattle ranch in Wyoming, to touring as a sports journalist with a British soccer team, to flying planes as a licensed pilot. In addition to supplying material for poems, these experiences spawned articles which appeared in publications like *Sports Illustrated* and *The New York Times*.

Ackerman's first book, *The Planets: A Cosmic Pastoral* (1976), is a poetic collection on the solar system which grew "out of an ignorance and then a compulsion to cure it. I never plan my obsessions," she said. "They just take hold."

After the spring semester, the writers will move on to other experiences. Since leaving her teaching position at the University of North Carolina in 1970 to write full-time, Wilkinson has supported herself with part-time employment as a teacher, car racing scorekeeper, journalist and writer of juvenile books. Ackerman will return to the University of Pittsburgh to teach, write and pursue whatever adventure might present itself.

One thing is certain: both women will continue to inquire about the world in their own fashion, and to share their discoveries along the way.

Cynthia Georges

Weinberg gives Holocaust lecture

David Weinberg, associate professor of history at Bowling Green State University, will speak on "The Jews of Paris in the 1930s" on Monday, April 9, at 4 p.m. in the Ann Whitney Olin Women's Building Lounge.

The lecture, which is free and open to the public, is part of a program sponsored by WU's Committee on Holocaust Studies, titled "In the Valley of the Shadow: European Jews in the 1930s."

Weinberg, a member of the executive committee of the National Holocaust Resource Center, has written many papers, books and articles on the Holocaust, including *The Challenge of Modern Jewish Emancipation* (1979) and *A Community on Trial: The Jews of Paris in the 1930s* (1977).

WU students organize symposium on child abuse prevention

Child abuse awareness is the topic of a four-day symposium to be held April 9-12 on campus. Titled "Child Abuse: The Silent Tragedy," the symposium will feature a keynote lecture by a nationally known child abuse consultant, and a panel discussion with a St. Louis County police officer, a WU social work professor, and an area social worker.

Sponsored by the Campus Y, the symposium is free and open to the public. Mark Reiter, a junior majoring in sociology, and Jill Silver, a junior majoring in psychology, are co-chairing the symposium, which they believe is the first of its kind on a student level in St. Louis.

From 10 a.m. to 2 p.m. April 9 and 10, literature dealing with child abuse will be displayed in the Gallery of Mallinckrodt Center. Representatives from various local social agencies will be available to answer questions.

"How child abuse affects college students and how they can be instrumental in helping toward the prevention of child abuse," will be the topic of a talk show airing Monday at 10:30 p.m. on KWUR (90.3 FM).

The film "A Cry of Pain," will be shown at 8 p.m. Tuesday, April 10, in Lambert Lounge, Mallinckrodt. The two-hour film stresses the need for community involvement and prevention programs.

Child abuse in society, and more specifically in the home, is the topic of the panel discussion from 3 to 4:30 p.m. April 11, in Lambert Lounge. Panel participants are Robert Pierce, WU assistant professor of social work; Sue Steepleton, a social worker with the Salvation Army Residence for Children; and Debra

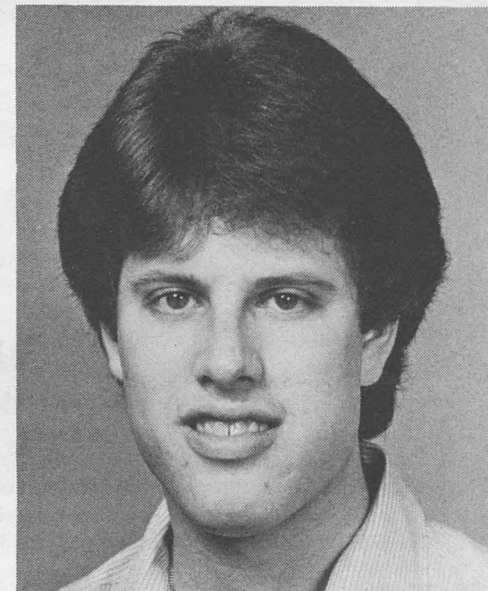
Johnson, a St. Louis County police officer who investigates child abuse cases.

The film "Don't Give Up on Me" will be shown at 8 p.m. April 11 in Friedman Lounge, Wohl Center.

Helen Swan, the sexual abuse consultant for Region VII Child Abuse and Neglect Resource Center, is the symposium's keynote speaker. Swan will speak on child abuse from 1 to 2 p.m. Thursday in Hurst Lounge, Duncker Hall. From 2 to 3 p.m. she will lecture on sexual abuse and incest. A reception with Swan will be held from 12:30 to 1 p.m. in Hurst Lounge.

The symposium will conclude with an information session on volunteering opportunities from 7 to 8:30 p.m. Thursday in Friedman Lounge.

For more information, call 889-5010.



Mark Reiter

Kelly—continued from p. 1

At the 77th annual NCAA Convention, following his death, a memorial resolution was adopted commemorating Leo Kelly's distinguished service to college athletics. The naming of the new baseball field in his honor is further recognition of his outstanding coaching career.

Psychologist to speak on consciousness

Julian Jaynes, author and Princeton University psychology professor, will speak on "Consciousness and the Voices of the Mind" at 11 a.m. Wednesday, April 11, in Graham Chapel. The lecture, which is free and open to the public, is sponsored by the Assembly Series.

Author of *The Origins of Consciousness in the Breakdown of the Bicameral Mind*, a National Book Award runner-up in 1978, Jaynes has spent much of his life researching consciousness and its origin.

In the book he shows that consciousness is based on language; therefore, only human beings are capable of it. He has traced the origin of consciousness to around 1,000 B.C.

Jaynes' next book, *The Consequences of Consciousness*, will be published in late 1984. Jaynes, who has been at Princeton University since 1964, earned his BA from Harvard and McGill universities, and his MA from Yale University.

RECORD

Editor: Susan Kesling, 889-5254
Assistant Editor: Susan Killenberg, 889-5293
Washington University Record (USPS 600-430; ISSN 0745-2136), Volume 9, Number 26, April 5, 1984. Published weekly during the school year, except school holidays, monthly in June, July and August, at the Office of News and Information, Campus Box 1142, Washington University, St. Louis, Mo. 63130. Second-class postage paid at St. Louis, Mo.
Address changes and corrections: Postmaster and non-employees: Send to: WU Record, Campus Box 1142, Washington University, St. Louis, Mo. 63130.
Hilltop Campus Employees: Send to: Personnel Office, Campus Box 1184, Washington University, St. Louis, Mo. 63130.
Medical Campus Employees: Send to: Personnel Office, Campus Box 8091, 4550 McKinley Ave., Washington University, St. Louis, Mo. 63110.

NOTABLES

Sally Beck, head of circulation services at Olin Library, presented a paper at the Issues in Acquisitions Conference held March 19-20 in Oklahoma City. Her paper was titled "Librarian/Faculty Role in Collection Development in Libraries With Approval Programs."

Ezequiel Bellorin-Font, Aggregate Professor of Medicine at the Universidad de Oriente in Caracas, Venezuela, will spend three months at WU's School of Medicine studying peripheral metabolism of the parathyroid hormone on a \$5,000 scholarship from the American College of Physicians. He is one of four Latin American internists to receive the scholarship.

Mary Henderson, artist-in-residence in the music department, will be featured in three works of 20th-century chamber music in a Chamber Music St. Louis On Stage concert at 8 p.m. Monday, April 16, at Powell Symphony Hall. Henderson will perform Dennis Riley's "Emily Dickinson Songs," Luciano Berio's "O King" and Lukas Foss' "Time Cycle." The performance is part of an innovative concert series in which both the musicians and the audience are seated onstage.

Edward J. Imwinkelried, professor of law, recently was appointed special consultant to the section on Continuing Legal Education to the American Bar Association's Criminal Law Section. In that capacity he has sole responsibility for the section's continuing legal education programs.

William Maurer, senior assistant personnel officer for benefits, was elected to a three-year term on the Supervisory Committee of the St. Louis Teachers Credit Union at their annual meeting on March 23. Maurer has held the position on the committee since June 1983.

Alan R. Tom, chairman and associate professor in the Department of Education, is the author of a recently published book, *Teaching as a Moral Craft*. The book contains a critique of contemporary teaching effectiveness research, which is based on the mistaken conception that teaching is best conceived of as an applied science. An alternative conception, teaching as a moral craft, is proposed, and Tom examines ways in which this alternative conception can be related to a variety of educational issues.

CALENDAR

April 5-14

Friday, April 6

5:45 p.m. Hillel Foundation Dinner and Lecture, "Mohammed and the Jews," Ray Scheindlin, Jewish Theological Seminary. Hillel House, 6300 Forsyth Blvd. Dinner only, \$3; dinner and lecture, \$4.50. Call 726-6177 by April 5 for reservations.

7 p.m. Hillel Graduate Group Shabbat Pot Luck and Lecture, "How Opposites Attract," Ed Harris, psychotherapist. Cost \$3 or a dairy dish. Call 726-6177 for location.

7:30 p.m. Inter-Varsity Christian Fellowship Meeting. Green Stuffs Line, Wohl Center.

Saturday, April 7

9 a.m. Hillel Foundation Shabbat Services. Hillel House, 6300 Forsyth Blvd.

4 p.m. Hillel Foundation Lecture, "The Poetry of Mysticism," Ray Scheindlin, Jewish Theological Seminary. Admission is \$3. Hillel House, 6300 Forsyth Blvd.

Sunday, April 8

11:30 p.m. Hillel Foundation Brunch and Lecture, "Critique of U.S. Nuclear Policy," Ben Abelow, arms control specialist. Admission \$3. Call 726-6177 by April 5 for reservations.

6 p.m. Interdenominational Vesper Service with Paul MacVittie, dir., WU Protestant Center. Graham Chapel.

7:30 p.m. The Gargoyle Committee presents Liz Story, jazz pianist, in concert. The Gargoyle, Mallinckrodt Center. General admission is \$4 in advance and \$5 at the door; faculty, staff and WU students \$3 in advance and \$4 at the door.

Monday, April 9

4 p.m. Personal Computing Education Center Short Course, "Doing Interactive Computing with MUSIC." Free to WU community. (Also April 10, 11, 12 and 13, same time.) For reservations and location, call 889-5313.

6 p.m. Interfraternity Council's Chambers Banquet with David Pearce, architect for WU Sports Complex, speaker. Cheshire Inn, 6306 Clayton Rd. Cost \$15 a person. For reservations, call 889-5037.

Tuesday, April 10

3:30 p.m. George Warren Brown School of Social Work Career Day. Brown Hall Lounge. For more info., call 889-6676 or 889-6602.

7 p.m. Student Educational Services LSAT Test Preparation Workshop with Phyllis Dubinsky, reading and study skills specialist, WU Student Educational Services Learning Center. 322 Rebstock. (Also Wed., April 11, and Thurs., April 12, same time, Rebstock.) Admission fee \$10. Pre-registration required. Call 889-5970.

Friday, April 13

6-11 p.m. Thurtene Carnival. (Also Sat., April 14, noon to 11 p.m.) In case of rain, the carnival will resume on Sunday, April 15. Campus parking lot on corner of Millbrook and Skinker blvds.

Saturday, April 14

9 a.m. Hillel Foundation Shabbat Services. Hillel House, 6300 Forsyth.

LECTURES

Thursday, April 5

Noon. Medical Seminar, "Signal Processing in the Vestibulo-ocular Reflex," David A. Robinson, Dept. of Ophthalmology, Johns Hopkins U. 472 McDonnell Medical Sciences Bldg., 4565 McKinley.

1:10 p.m. George Warren Brown School of Social Work Lecture Series, "Gays and Lesbians: A Model for Identity Acquisition and Development," Beth Zemsky, WU social work alumna, and Gary Hirshberg, WU social work student. Brown Hall Lounge.

4 p.m. Public Affairs Thursday Lecture Series, "The Politics of Contemporary Ireland," Richard Jay, Queen's U., Belfast, N. Ireland. C & D 200 Eliot.

4 p.m. Dept. of Chemistry Seminar, "The Role of the FDA in Drug Analysis in the 1980s," Thomas P. Layloff Jr., FDA National Center for Drug Analysis, St. Louis. 311 McMillen Lab.

Continued on p. 4



Amy Schactman (seated), Anna Marie Schary and Gale Ormiston pose in "En Famille," a dance in "The Facade Suite," to be presented as part of the St. Louis Repertory Dancers' spring concert April 13-15 in Edison Theatre.

Repertory dancers' concert at Edison

The St. Louis Repertory Dancers, company-in-residence at WU, will present a concert at 8 p.m. Friday through Sunday, April 13-15, in Edison Theatre.

The St. Louis Repertory Dancers is a professional company comprised of University dance faculty, guest artists and alumni. Billed as a "tenth anniversary gala performance," the concert salutes a decade of Edison Theatre events.

The first half of the program consists of five compositions, three of which are premiere performances choreographed by University faculty members. Mary-Jean Cowell; associate professor of dance; Anna Marie Schary, artist-in-residence; and Suzanne Grace, lecturer and dance instructor. Michael Kelly Bruce, artist-in-residence, is the featured soloist.

The centerpiece of the concert is the premiere of "The Facade Suite," a theatrical collage of dance, music by Sir William Walton, and poetry by Edith Sitwell. The suite, choreographed by Annelise Mertz, director of the company and the University's dance division, and guest artist Gale Ormiston, will comprise the remainder of the program.

Mertz described "The Facade Suite" as "satirical, witty and elegant. It is visually exciting and diversified in its appeal to both dance and music lovers. It is a total theatre piece."

A six-piece orchestra will perform Walton's score under the baton of Nicholas McGegan, visiting artist in WU's music department, Ruth Grauert, New York-based artist, is lighting designer and David Kruger, resident designer in Performing Arts, designed props and a special curtain for the production. Bonnie J. Cutter, head of the Repertory Theatre of St. Louis' Craft Shop, created 60 costumes for the dances.

The St. Louis Repertory Dancers is funded in part by grants from the Camelot/Special Projects Fund of the Arts and Education Council of Greater St. Louis, the Missouri Arts Council, and the St. Louis Arts and Humanities Commission.

General admission is \$8. Admission for WU faculty, staff and area students is \$5. WU student admission is \$4. All seating is reserved. For more information, call the box office at 889-6543.

Advertising art exhibited at Bixby

The 62nd New York Art Directors Club Annual Exhibition will be displayed April 8-22 at Bixby Gallery in Bixby Hall. The exhibit is on national tour; the St. Louis presentation is sponsored by alumni of the School of Fine Arts.

A reception will be held from 2 to 5 p.m. Sunday, April 15, in the gallery. Stephen Frykholm, creative director of Herman Miller Inc., a leading manufacturer of contemporary office furniture, based in Zeeland, Mich., will speak at 5 p.m. on "The Design of Herman Miller" in Steinberg Auditorium.

A special exhibit of Frykholm's work will be included in the show. Entries from two St. Louis firms also are included in the show: Frank

James Direct Marketing Co. Inc. and Harris Carstens Amaral Advertising.

The reception coincides with the opening reception for the school's Master of Fine Arts Exhibition from 3 to 5 p.m. April 15 in the Gallery of Art in Steinberg Hall. The master's show will be displayed through April 29.

The art directors' exhibition is the oldest and largest competition of advertising and editorial design in the United States. It includes print, package and television design produced and disseminated in 1982 in the United States or Canada. Of the 17,000 entries received for this year's competition, only 10 percent were accepted.

The exhibits and receptions at both galleries are free and open to the public. Gallery hours are 10 a.m. to 5 p.m. weekdays and 1 to 5 p.m. weekends.

CALENDAR

April 5-14

Continued from p. 3

4 p.m. Division Plant Biology Lecture, "Synthesis, Post-translation Modifications and Transport of Phytohemagglutinin," Maarten J. Chrispeels, Dept. of Biology, U. of Cal.-San Diego. 322 Rebstock.

8 p.m. Dept. of History Lecture, "Juan Rulfo and the Mythical Novel," Carlos Fuentes, WU Visiting Professor in Literature and History. Steinberg Aud.

Friday, April 6

9 a.m.-noon. Proust Colloquium Lectures. Lambert Lounge, Mallinckrodt.

1:45 p.m. Proust Colloquium Round Table Discussion with Serge Doubrovsky, New York, U., and WU professors William Gass, Howard Nemerov, Naomi Lebowitz and Carlos Fuentes. Steinberg Aud.

3 p.m. Music Lecture Series, "Debussy's Early Songs," James Briscoe, asst. prof. of music, Butler U. Blewett B-8.

4 p.m. Proust Colloquium, "The Body of the Text and the Text of the Body," Serge Doubrovsky, prof. of French, New York U. Steinberg Aud.

4 p.m. WU Barnard Cancer Center Dedication Lecture, "Bone Marrow Transplantation for Malignant Disease," E. Donnell Thomas, head, Division of Oncology, U. of Wash. School of Medicine. WU Medical Center, Wohl Aud., 4960 Audubon.

6 and 8:30 p.m. WU Association Film/Lecture, "Glories of the Alps," Thayer Soule, filmmaker. Graham Chapel. For ticket info., call 889-5122.

8 p.m. Midwest Neurobiology Meeting. (Also Sat., April 7, and Sunday, April 8.) Erlanger Aud., McDonnell Medical Sciences Bldg., 4565 McKinley. For more info., call Dr. Carl Rovainen at 362-2299.

Saturday, April 7

9:15 a.m.-1 p.m. Proust Colloquium Lectures. Lambert Lounge, Mallinckrodt.

Monday, April 9

12:45 p.m. Society of Professors Emeriti Luncheon and Lecture, "Indonesia: The Country Fascinating Yet Frustrating," G. D. Selfridge, dean, WU School of Dental Medicine. Whittemore House.

4 p.m. Dept. of Biology Seminar, "Behavioral Analysis of Associative Learning in *Aplysia*," Tom Carew, Dept. of Psychology, Yale U. 322 Rebstock.

4 p.m. European Jews in the 1930s Lecture Series, "The Jews of Paris in the 1930s," David Weinberg, assoc. prof. of history, Bowling Green State U. Ann Whitney Olin Women's Bldg. Lounge.

7 p.m. Newman Center Lecture Series, "Issues in Biomedical Ethics," Rev. Kevin O'Rourke, prof. of medical ethics, St. Louis School of Medicine. Friedman Lounge, Wohl Center.

8 p.m. School of Architecture Lecture, "Ideal Cities and Mature Cities," Martin Spuehler, WU visiting architect. Steinberg Aud.

Tuesday, April 10

9 a.m. Eighth Annual Eli Robins Visiting Lectureship, "The Role of Dopamine in Negative Symptomatology in Schizophrenia," Herbert Y. Meltzer, prof. of psychiatry, U. of Chicago. Clopton Aud., Wohl Clinic Bldg., 4950 Audubon.

Noon. Biomedical Engineering Seminar, "Single Channel Currents in Membranes: A Biologist's Wish Fulfillment," Stanley Mislser, asst. prof. of medicine at Jewish Hosp. 305 Bryan.

Noon. Psychiatry Neuroscience Lecture Series, "The Hippocampal Slice in Studies of Epilepsy," Charles Zorumski, WU instructor in psychiatry. Schwarz Aud., 1st fl., old Maternity Hosp. Bldg.

2:30 p.m. Center for the Study of Data Processing Symposium, "Managing the Introduction of New MIS Technology at Owens-Corning Fiberglas," Paul Daverio, vice president, management information systems, Owens-Corning Fiberglas. For location, call 889-5330.

3:30 p.m. Center for the Study of American Business Money and Labor Workshop with Paul Davidson, prof. of economics, Rutgers U. 300 Eliot.

4 p.m. Cell and Molecular Division Lecture, "Mitogenic Regulation of Muscle Differentiation," Steve Hauschka, Dept. of Biochemistry, U. of Wash., Seattle. Cori Aud., McDonnell Medical Sciences Bldg., 4565 McKinley.

4 p.m. Lewin Visiting Professorship Lecture, "The Road to the Somme: The Making of the Great War, Part I," Michael E. Howard, Regius Professor of Modern History at Oxford U. Graham Chapel.

6:30 p.m. Students-Alumni Relations Committee Spectrum Series, "Two Career Couples," Peggy Guest, counseling psychologist. Cost \$2.50 a person. Women's Bldg. Lounge. Call 889-5122.

7 p.m. Newman Center Lecture Series, "Women in the Church," Sister Mary Walden. Friedman Lounge, Wohl Center.

8 p.m. School of Fine Arts Lecture with Phyllis Plattner, WU lecturer in fine arts, discussing her work. Steinberg Aud. (Her exhibition of curved watercolors is on display at the St. Louis Art Museum through April 29.)

Wednesday, April 11

11 a.m. Assembly Series Lecture, "Consciousness and the Voices of the Mind," Julian Jaynes, Dept. of Psychology, Princeton U. Graham Chapel.

Noon. Neural Sciences Lecture Series, "Basolateral Membrane Conductance Properties of Frog Corneal Epithelium," Peter Reinach, WU Dept. of Ophthalmology 472 McDonnell Medical Sciences Bldg., 4565 McKinley.

4 p.m. Dept. of Physics Colloquium, "Band Gap Anomalies in Semiconductor Crystals and Alloys," Alex Zunger, Solar Energy Research Inst., Golden, Colo. 204 Crow.

6:30 p.m. New Trends in Medicine Alumni Lecture Series, "Transplantation as an Alternative Therapy for Diabetes," David W. Scharp, WU assoc. prof. of surgery. WU Club, 335 Mansion House Center. Cost \$11.50 a person for dinner and lecture. For reservations, call 889-5208.

Thursday, April 12

Noon. Non-Academic Personnel Advisory Committee's Brown Bag Luncheon Program, "Recruitment Strategies and Ethics," Sheila Lewis, WU asst. dir. of admissions. Women's Bldg. Lounge.

1:10 p.m. George Warren Brown School of Social Work Lecture Series, "Epilepsy Update," Jane Hornby, education coordinator, Epilepsy Federation of Greater St. Louis. Brown Hall Lounge.

4 p.m. Dept. of Philosophy Colloquium, "Godel's Work on General Relativity and the Structure of Space Time," David Malamet, assoc. prof. of philosophy, U. of Chicago. Hurst Lounge, Duncker Hall.

4 p.m. Plant Biology Program Lecture, "Cloning Virulence Genes from Pathovars of *Pseudomonas syringae*," Dallice Mills, Dept. of Botany and Plant Pathology, Oregon State U. 322 Rebstock.

4 p.m. Career Connections Panel Discussion, "Where Do I Go from Here? Choices and Directions for the Undecided," Ann Whitney Olin Women's Bldg. Lounge. Call 889-5930.

7 p.m. Lewin Visiting Professorship Lecture, "A Military Historian's View of World War II," Michael E. Howard, Regius Professor of Modern History at Oxford U. Graham Chapel.

8 p.m. Dept. of History Lecture, "Jose Lezama Lima and the Baroque Novel," Carlos Fuentes, WU Visiting Professor in Literature and History. Steinberg Aud.

Friday, April 13

12:30 p.m. WU Woman's Club's Mini-Luncheon, "History and Current Projects of the Sculpture Conservation Laboratory of WU Technology Associates," Phoebe Dent Weil, arts conservator. Cost is \$2 a person. For reservations, call Ruth Drake, 721-4829, or Corleen Motard, 645-2022. Ann Whitney Olin Women's Bldg. Lounge.

2 p.m. McDonnell Lab. for Psychical Research Seminar Series, "The Emerging Science of Anomalies," Marcello Truzzi, editor of *Zetetic Scholar*, Eastern Michigan U. 117 Eads.

3 p.m. Dept. of Music Lecture Series, "Update on Ethnomusicology," Bruno Nettl, prof. of ethnomusicology, U. of Ill. Blewett B-8.

4 p.m. Dept. of Chemistry Seminar, "Models for Electron Transfer Reactions of Metal Complexes in Solution," Norman Sutin, of Brookhaven National Lab. 311 McMillen Lab.

4 p.m. Dept. of Biological Chemistry Seminar, with Jonathan Cohen, WU prof. of neurobiology. Biological Chemistry Lib., 660 S. Euclid.

Saturday, April 14

9 a.m. Neural Sciences Lecture Series, "Axoplasmic transport of Growth Associated Proteins," Mark Willard, WU Dept. of Anatomy and Neurobiology. 928 McDonnell Medical Sciences Bldg., 4565 McKinley.

PERFORMANCES

Thursday, April 5

8 p.m. The Holy Roman Repertory Company presents "Sacred and Profane," Drama Studio, Mallinckrodt Center. (Also April 6 at 8 p.m. and April 7 at 2 p.m.) General admission is \$3. Tickets available at the door or at the Edison Theatre box office. 889-6543.

Saturday, April 7

8 p.m. Edison Theatre presents Benita Valente, opera soprano. General admission \$8; WU faculty, staff and area students \$5; WU students \$4. For more information, call Edison Theatre box office at 889-6543.

Friday, April 13

8 p.m. Edison Theatre presents St. Louis Repertory Dancers. (Also Sat., April 14 and Sun., April 15, same time, Edison.) General admission \$8; WU faculty, staff and area students \$5; WU students \$4. For info., call Edison Theatre box office at 889-6543.

EXHIBITIONS

"The Beautiful, The Sublime and The Picturesque: British Influences on American Landscape Painting." Through April 8. Gallery of Art, upper gallery. 10 a.m.-5 p.m. weekdays; 1-5 p.m. weekends. For evening hours, call 889-5490.

"Life and Land in 19th-Century Europe." Through April 22. Gallery of Art, lower gallery. 10 a.m.-5 p.m. weekdays; 1-5 p.m. weekends.

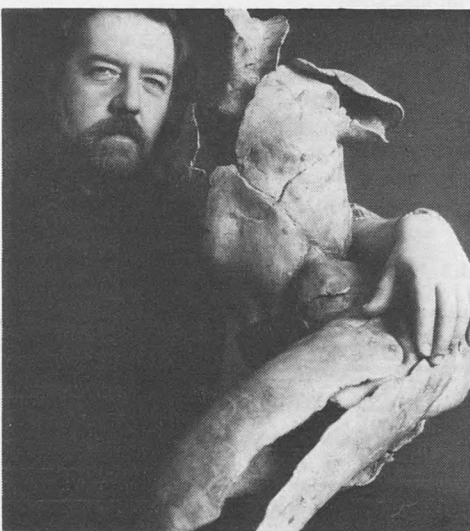
"Cubists, Expressionists and Surrealists." Through April 22. Gallery of Art, lower gallery. 10 a.m.-5 p.m. weekdays; 1-5 p.m. weekends.

"Surimono," Japanese woodblock prints. Through April 22. Gallery of Art, print gallery. 10 a.m.-5 p.m. weekdays; 1-5 p.m. weekends.

"Harry Truman: The Man From Missouri." Through May 1. Olin Library, third level. Open regular library hours.

"New York Art Directors' Exhibition." April 8-22. Bixby Hall Gallery. 10 a.m.-4 p.m. weekdays; 1-5 p.m. weekends.

"Lithography and the 19th-Century Medical Book." Through May 11. Medical Library Annex, 615 S. Taylor. Open weekdays, 8:30 a.m.-5 p.m.



"400 Faces," an exhibit of photographs by 10 WU photography majors in the School of Fine Arts. April 2-5. Bixby Gallery, Bixby Hall. (Photo above by WU student Jon Yamashiro is of Gyuri Hollosy, a lecturer in art at the School of Fine Arts.) Gallery hours are 10 a.m.-4 p.m. weekdays; 1-5 p.m. weekends.

MUSIC

Friday, April 6

8 p.m. Dept. of Music Senior Voice Recital with Martha Johnson, soprano. Brown Hall Lounge.

Sunday, April 8

8 p.m. Faculty Recital with Mary Henderson, mezzo-soprano, and Jeff Noonan, guitarist. Steinberg Aud.

Monday, April 9

8 p.m. Senior Honor Recital with Kim Pinada, recorder, and Jo Ann Jensen, harpsichord. Graham Chapel.

Friday, April 13

8 p.m. Department of Music Concert with Allen Krantz, guitar, and Jonathan Beiler, violin. (Also sponsored by the St. Louis Classical Guitar Society.) Graham Chapel. General admission \$5; Guitar Society members \$3. For more info., call Alan Rosenkoetter, 889-5542.

Saturday, April 14

3 p.m. Undergraduate Saxophone Recital with Cynthia Vaught. Blewett B-8.

8 p.m. Undergraduate Voice Recital with Doug Brandt, tenor. Steinberg Aud.

FILMS

Thursday, April 5

7 and 9:15 p.m. WU Filmboard Series, "Closely Watched Trains." \$2. Brown Hall Aud.

Friday, April 6

7 and 9:30 p.m. WU Filmboard Series, "Octopussy." \$2. Brown Hall Aud. (Also Sat., April 7, 7 and 9:30 p.m., and Sun., April 8, 7 p.m. Brown.)

Midnight. WU Filmboard Series, "Enter the Dragon." \$1.50. Brown Hall Aud. (Also Sat., April 7, midnight, and Sun., April 8, 9:30 p.m. Brown.)

7:30 p.m. Proust Colloquium Film, "Celeste." German film with English subtitles. \$2. Rebstock Aud.

Monday, April 9

7 and 8:45 p.m. WU Filmboard Series, "Laura." \$2. Brown Hall Aud. (Also Tues., April 10, same times, Brown.)

7 p.m. German Cinema, "Nordsee ist Mordsee." Free. English subtitles. Language Lab., 210 Ridgley Hall.

Tuesday, April 10

7:30 p.m. Newman Center/Medical Campus Film, "Leo Beuerman." Newman Center, Medical Campus, 225 South Euclid Ave.

Wednesday, April 11

6:30 and 9:45 p.m. WU Filmboard Series, "La Dolce Vita." \$2. Brown Hall Aud. (Also Thurs., April 12, same times, Brown.)

7:30 p.m. Japanese Experimental Film 1960-1980. Steinberg Aud. Sponsored by the American Federation of the Arts and the Japan-U.S. Friendship Commission.

Friday, April 13

8 and 10 p.m. WU Filmboard Series, "Tender Mercies." \$2. Brown Hall Aud. (Also Sat., April 14, 8 and 10 p.m., and Sun., April 15, 9 p.m. Brown.)

Midnight. WU Filmboard Series, "The Kids Are Alright." \$1.50. Brown Hall Aud. (Also Sat., April 14, midnight, and Sun., April 15, 9 p.m. Brown.)

SPORTS

Saturday, April 7

1 p.m. Baseball, WU vs. Rose-Hulman Institute (Doubleheader). Baseball Field.

Sunday, April 8

1 p.m. Baseball, WU vs. Rose-Hulman Institute. (Doubleheader.) Baseball Field.

Wednesday, April 11

3 p.m. Men's Tennis, WU vs. St. Louis U. WU tennis courts.

Saturday, April 14

1 p.m. Baseball, WU vs. Greenville College. (Doubleheader.) Baseball Field.

Calendar Deadline

The deadline to submit items for the April 26-May 5 calendar of the *Washington University Record* is April 12. Items must be typed and state time, date, place, nature of event, sponsor and admission cost. Incomplete items will not be printed. If available, include speaker's name and identification and the title of the event; also include your name and telephone number. Address items to King McElroy, calendar editor, Box 1142.