

Washington University School of Medicine

Digital Commons@Becker

Washington University Record

Washington University Publications

4-26-1984

Washington University Record, April 26, 1984

Follow this and additional works at: <https://digitalcommons.wustl.edu/record>

Recommended Citation

Washington University Record, April 26, 1984. Bernard Becker Medical Library Archives.
<https://digitalcommons.wustl.edu/record/304>.

This Article is brought to you for free and open access by the Washington University Publications at Digital Commons@Becker. It has been accepted for inclusion in Washington University Record by an authorized administrator of Digital Commons@Becker. For more information, please contact vanam@wustl.edu.

Washington University RECORD



Cultural Attache Pierre Collombert (at right) presents the medal of the Order of the Academic Palms to James F. Jones Jr., associate professor of French and chairman of the Department of Romance Language.

Jones honored by French government

James F. Jones Jr., WU associate professor of French and chairman of the Department of Romance Languages, has been named a Chevalier de l'Ordre des Palmes Academiques (Knight of the Order of the Academic Palms) by the French Ministry of Education.

Pierre Collombert, cultural attache from Chicago, presented the award April 18 at a dinner party on campus hosted by Chancellor and Mrs. William H. Danforth.

According to Collombert, Jones, 37, is one of the youngest individuals to receive the honor. The award also is exceptional because it was presented just last spring to another member of the department, Michel Rybalka, professor of French, and "it is exceedingly rare for two individuals of the same department to receive this high recognition within such a brief period," Collombert said.

Jones, an authority on 18th-century French literature, had his first book, *La Nouvelle Heloise: Rousseau and Utopia*, published in 1978. His critical translation of Prevost's *L'Histoire d'une Grecque Moderne* is scheduled to appear this spring.

Library sponsors Goethe exhibit

"Goethe's Narrative Works," an exhibition of 53 items drawn primarily from WU's Gert von Gontard Collection of German literature, is on display on the fifth level of Olin Library. The exhibit will run through May 31.

The exhibition features many rare books and first editions. Of par-

He joined the faculty in 1975, was director of undergraduate studies in French from 1978 to 1982, and was named chairman of the department in 1982.

The French government noted Jones' role in the restructuring of the French curriculum at WU, where the success of the undergraduate program has gained national and international attention.

The late Richard Admussen, a former chairman of the department, and Jones inaugurated a series of changes in the department, including the renovation of the language laboratory; the installation of French suites in the dormitories; the founding of the Summer Language Institute, held annually on the grounds of the Chateau de la Hercherie in France; and the reorganization of the Year Abroad Program at the Universite de Caen.

Other members of the WU faculty who have received the Palmes Academiques are: Elizabeth Schreiber, professor emerita, and Isidore Silver, Rosa May Professor in the Humanities Emeritus.

ticular significance are two unpublished letters written by Goethe. 18th-century German poet and dramatist, and one of his drawings. Many of the volumes on display contain illustrations by important German artists or were printed by notable bookmakers of the period. Open to the public and free of charge, the exhibition can be viewed from 8:30 a.m. to 5 p.m. Monday through Friday.

For more information, call 889-5495.

WU places second nationally in Putnam Math Competition

Maintaining a tradition of excellence, WU ranked second in the nation in the prestigious William Lowell Putnam Mathematical Competition. Edged out only by California Institute of Technology, the WU team beat such institutions as Harvard, MIT and Princeton.

Twenty-three WU students participated in the 1983 competition. Of that number, three students were chosen prior to the test as the WU team. They were Richard A. Stong, a junior from Charlottesville, Va., who placed seventh nationally; Paul H. Burchard, a senior from Stillwater, Okla., who placed 33rd; and Edward A. Shpiz, a senior from Teaneck, N.J., who placed 48th. Also finishing in the top 200 were William H. Paulsen, Patrick J. Abegg, and Bard Bloom.

The Putnam is recognized as the most grueling mathematics test undergraduate students are ever likely to take. It is given on the first Saturday in December within the mathe-

matics departments of about 350 schools across the United States and Canada. One-half of the 2,000 students who take the exam typically score less than three of a possible 120 points.

Since 1976, WU's team has consistently placed in the top 10, taking first place three times and second place three times.

"If an individual scores in the top 100 on the Putnam, then everyone knows that you're absolutely first class," says Carl Bender, professor of physics, who with Edward N. Wilson, dean of the graduate school of arts and sciences, coaches the WU Putnam contenders.

"One reason we're so pleased with the students' performance is that, when you look at the number of students who ranked in the top 100, we're rubbing shoulders with some of the best places around," says Wilson. "We have more students in

Continued on p. 2

WU senior receives top biology award

Jamie L. Feldman, a senior in the College of Arts and Sciences, is the recipient of the 1984 Marian Smith Spector Prize in Biology. Feldman is a double major in biology and anthropology.

Feldman has produced a paper, titled "Medicinal Plants of the Neotropics: A Survey of the Missouri Botanical Garden Herbarium." The research on which her paper is based was conducted under the supervision

of Walter H. Lewis, professor of biology.

Feldman recently was elected to Phi Beta Kappa. She has tentatively accepted an offer from the University of Illinois at Urbana-Champaign to enter an MD/PhD program next fall. The PhD would be in anthropology.

The Marian Smith Spector Prize in Biology is an annual award of \$500 established in 1974 in memory of Marian Spector (AB '38) who studied zoology under Viktor Hamburger, Edward Mallinckrodt Distinguished University Professor of Biology, and was active in research in embryology in his laboratory.

Zaborszky joins national engineers' academy

John Zaborszky, WU professor and chairman of the Department of Systems Science and Mathematics, has been elected a member of the National Academy of Engineering, according to James M. McKelvey, dean of the School of Engineering and Applied Science.

Election to the academy is one of the highest honors in the field of engineering.

A native of Budapest, Hungary, Zaborszky has taught at the Royal Hungarian Technical University, where he earned a doctor of science degree in 1953. He came to WU in 1956 and has been a department chairman since 1974.

Zaborszky's current research concerns the operation and control of America's interconnected power systems. Using modern systems theory and digital computers, Zaborszky's goal is to assure continuous electrical service and find ways to

prevent such irregularities as blackouts, brown-outs and power surges.

"Certainly, there are many causes for these problems; they are very complex," says Zaborszky. "That's what makes this work so challenging."



John Zaborszky



The WU math team and their faculty advisors (l to r): Edward Shpiz, a senior; Carl Bender, professor of physics; Richard Stong, a junior; Edward Wilson, dean of the Graduate School of Arts & Sciences; and Paul Burchard, a senior.

Putnam—*continued from p. 1*

the top 100 than Stanford, Cornell, Brown, Rice . . . some very big schools. We're fourth in the nation by that measure. And that's been the story for some time."

For second place, the University received a cash prize of \$2,500 and each team member received \$200.

Woman's Club hosts luncheon

The Woman's Club of WU will hold its annual spring luncheon at noon Friday, May 4, at the St. Louis Woman's Club, 4600 Lindell Blvd.

Berenice Kelsey, a vocalist and member of the Woman's Club, will perform during a musical program, titled "Something Old, Something New, Something Borrowed, Some-

thing Blue." She will be accompanied by her husband, Howard, a former WU organist. The cost of the luncheon is \$10 for Woman's Club members and \$10.50 for their guests. For reservations, call Marjorie Weir at 843-0322 by April 26.

The Woman's Club of WU, a social organization that sponsors cultural and educational activities, is in its 74th year of service to wives of faculty and staff, and women faculty and staff.

Unanue succeeds Lacy as pathology head

Emil R. Unanue has been named the new head of the Department of Pathology at WU's School of Medicine. His appointment, effective Jan. 1, 1985, was announced by Chancellor William H. Danforth.

Unanue succeeds Paul E. Lacy, Edward Mallinckrodt Professor and head of the Department of Pathology. After more than 20 years as department head, Lacy has stepped down from the position to concentrate full time on his research. A member of the National Academy of Sciences, his work has advanced the field of immunology, organ transplantation and the continuing search for better diabetes treatment.

Unanue currently is on the faculty at Harvard Medical School, where for the last 10 years he has been Mallinckrodt Professor of Immunopathology. As head of the WU pathology department, he will serve as Edward Mallinckrodt Professor of Pathology and pathologist-in-chief at Barnes, Jewish and Children's hospitals.

An immunopathologist, Unanue has focused his research on the interactions among immune system cells. He has been instrumental in showing the critical role played by macro-

phages, cells that destroy and ingest foreign substances. He is co-author of *Textbook of Immunology and Macrophages Regulation of Immunity*.

A native of Cuba, Unanue received his BS degree in 1952 from the Institute of Secondary Education in Havana, and his MD degree in 1960 from the University of Havana School of Medicine. He served an internship in pathology at Presbyterian University Hospital in Pittsburgh.

He joined the Harvard faculty in 1970 and was named Mallinckrodt professor in 1974. Among his honors are the Parke Davis Award from the American Association of Pathologists, a Research Career Development Award from the National Institutes of Health, and a Guggenheim Fellowship from the John Simon Guggenheim Memorial Foundation in New York.

He is associate editor of three immunology journals and holds memberships in the American Association of Pathologists, American Society for Cell Biology, American Association of Immunologists, British Society for Immunology, Reticuloendothelial Society, and the Venezuelan Society of Allergy and Immunology.

Architecture awards Steedman fellowship

The Steedman Governing Committee at WU's School of Architecture has awarded the 1984-85 Steedman Travelling Fellowship to Joseph De Pace of New York City.

De Pace, 30, is an architect with the firm of Rothzeit, Kaiserman, Thomson and Bee, P.C. He is a graduate of the City College School of Architecture and holds a master's of architecture in urban design from

Harvard University Graduate School of Design.

The Steedman Travelling Fellowship is awarded annually and carries with it a fellowship in the American Academy in Rome. The fellowship was established at WU in 1925 in memory of alumnus James Harrison Steedman, who graduated in 1889 with a degree in mechanical engineering. He died in service as a first lieutenant in the U.S. Naval Reserves during World War I.

Summer insurance deducted in May

Deductions under the University Insurance Plan are based on 12 monthly deductions. For nine- and ten-month pay employees, the additional deductions for the summer months will be taken out of the May paycheck. The deductions will automatically resume with the first paycheck in the fall.

If nine- and ten-month employees do not want these additional deductions made, please contact the Personnel Office by no later than May 15.

Fulbright grants available

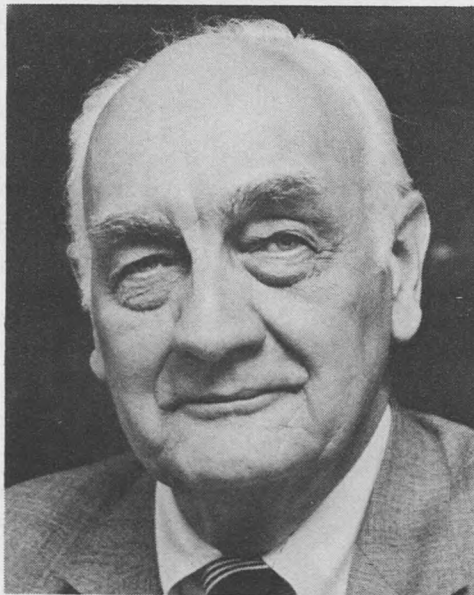
Applications for post-doctoral Fulbright grants for the academic year 1985-86 are now available at the Office of International Studies, Stix International House, 6470 Forsyth Blvd.

Interested persons should contact Ruth Iyob at 889-5958, or via the campus mail at Box 1088.



Alumni honored:

Three alumni of the School of Engineering and Applied Science received Alumni Achievement Awards at special ceremonies on April 12. The recipients are: Milton Klein, vice president and head of the Office of Special Projects of the Electrical Power Research Institute (above, left); Aaron Fischer, industrial consultant and director emeritus of Sigma-Aldrich Corp., St. Louis (above, right); and Louis W. Matthey, chairman and president of KSI Corp., Cincinnati (at left). The keynote address at the award ceremony was given by W. L. Hadley Griffin, chairman of the WU Board of Trustees and chairman of the Executive Committee of Brown Group Inc., St. Louis.



RECORD

Editor: Susan Kesling, 889-5254
Assistant Editor: Susan Killenberg, 889-5293
Washington University Record (USPS 600-430; ISSN 0745-2136), Volume 9, Number 29, April 26, 1984. Published weekly during the school year, except school holidays, monthly in June, July and August, at the Office of News and Information, Campus Box 1142, Washington University, St. Louis, Mo. 63130. Second-class postage paid at St. Louis, Mo.

Address changes and corrections:
Postmaster and non-employees: Send to: *WU Record*, Campus Box 1142, Washington University, St. Louis, Mo. 63130.

Hilltop Campus Employees: Send to: Personnel Office, Campus Box 1184, Washington University, St. Louis, Mo. 63130.

Medical Campus Employees: Send to: Personnel Office, Campus Box 8091, 4550 McKinley Ave., Washington University, St. Louis, Mo. 63110.

NOTABLES

Tilford Brooks, chairman and associate professor; **Patricia Shehan**, assistant professor; **Alan Rosenkoetter**, applied music coordinator; and **Steven Gibson**, doctoral student, all of the Department of Music, attended the Music Educators National Conference, March 21-24, in Chicago, Ill. The WU music department organized an exhibit, aimed at recruiting students, for the conference.

Ronald L. Carlson, professor of law, and **Shu Simon**, a visiting professor of law, traveled to Houston, Texas, in early April to the National Mock Trial Competition. With them were the WU mock trial team of **Daniel Bloom** and **Scott Cooper**, both seniors in the School of Law. The team beat William & Mary College, split with the University of Tennessee, and lost to the University of California-Western.

Irving Engel, associate professor of architecture, recently published a book, "Structural Principles." The text, published by Prentice-Hall Inc., addresses students of architecture with fundamental knowledge and principles underlying building designs.

Irving Gottesman, professor of genetics and psychiatry at WU's School of Medicine, received the 1984 Mortimer B. Goodman Award on April 14 from the Missouri chapter of the Alliance for the Mentally Ill, a self-help and advocacy group by and for families of the severely and chronically mentally ill. The award is presented each year to a mental health professional in recognition of contributions to the alliance. Gottesman's research focuses on the transmission of schizophrenia.

Lewis B. Hilton, professor emeritus in the Department of Music, wrote a paper titled "Music in the Koresan Community, Estero, Florida," that was presented at the Music Educators National Conference, March 21-24, in Chicago, Ill.

Hu-DeHart awarded Kellogg Fellowship

Evelyn Hu-DeHart, WU associate professor of history, has been named a national fellow by the W.K. Kellogg Foundation.

The fellowship, which includes a three-year grant of \$30,000, is designed to enable professionals to explore an area of research outside their usual disciplines. Forty-three fellows were chosen from nearly 900 applicants as showing exceptional potential for leadership.

Hu-DeHart, a social historian, plans to study public education in integrated communities as a Kellogg Fellow. She will explore issues that concern the British and American educational systems, including those of the St. Louis area.

Hu-DeHart is the author of two books on the Yaqui Indians of Mexico. She has studied in Germany, worked in a kibbutz in Israel, studied in Spain, been an exchange student and Fulbright scholar in Brazil, and taught and conducted research in Mexico and Peru.

In addition to the Kellogg award, Hu-DeHart has received fellowships from the Ford Foundation, the U.S. Department of Education, and the Social Science Research Council. She is also a Fulbright Scholar.

Martha N. Ozawa, professor of social work, delivered the second Ellen Winston Lecture at North Carolina State University on April 26. Ozawa presented her recent paper, "Taxes and Benefits Under Social Security: The Issue of Intergenerational Equity." Ozawa prepared a shorter version of that paper, titled "Peace Between the Young and the Old," which appeared as the guest editorial comment of the National Association of Social Worker's monthly newsletter in February. Another paper, "Women and Social Security," will be published in the May issue of "The Public Law Forum."

Michel Rybalka, professor of French, was the Geraldine Hammond Visiting Professor, March 5-9, at Wichita State University. He lectured on various aspects of French literature and contemporary French intellectual life.

Hazel Z. Sprandel, associate director of Student Educational Services, was honored at the recent American College Personnel Association National Conference in Baltimore, Md. Sprandel was presented a Presidential Service Award for "outstanding commitment and service to the association."

Murry L. Weidenbaum, Edward Mallinckrodt Distinguished University Professor at the Center for the Study of American Business, has been named president-elect of the Midwest Economics Association, the largest regional association of economists. He will serve as program chairman for the association until he is installed as president in April 1985.

Robert Wiltenberg, assistant professor of English, took part in a panel discussion on April 7, titled "Teaching Composition: The Entire Spectrum," at the Fourth Annual Interinstitutional Composition Conference at Southern Illinois University-Edwardsville.

Hu-DeHart now serves as a member of the board of directors at the University City Children's Center. She also is a member of the Midwest Association of Latin-American Studies, and helped to found the St. Louis chapter of the U.S.-China Friendship Association.



Evelyn Hu-DeHart



Auto Art. Customers at the West County Shopping Center were gasping recently as they encountered young people painting a car in the mall, but they soon found that the painters were college students with a mission. They were earning scholarship money for their colleges in a competition sponsored by the Buick Motor Division of General Motors. The WU team, which won \$500, are (l to r): Lori Neel, Debbie Brochstein, Cindy Vaughn and Mark Hurd. Jeannette Criglar and Karen Roehr also participated. Mall shoppers judged the competition.

Three medical faculty receive Javits neuroscience awards

Three faculty members at WU's School of Medicine will conduct research for the next seven years with funding from Javits Neuroscience Investigator Awards totaling nearly \$2.5 million.

The recipients are Barbara A. Bohne, associate professor of otolaryngology; Gerald D. Fischbach, professor and head of anatomy and neurobiology; and Dale Purves, professor of physiology and biophysics. The U.S. Congress gives the awards in honor of Senator Jacob K. Javits of New York.

The awards are for investigators who have submitted regular research grant applications for competitive review during the 1984 fiscal year and who have made substantial contributions in some field of neurological or communicative sciences. The prestigious grants provide a seven-year commitment of support to the re-

searchers who receive them.

Bohne will study the effects of noise on the inner ear in hopes of identifying early damage before hearing problems become too severe.

Fischbach's research involves the development of embryonic neurons and muscle cells in tissue culture and the formation of functional connections between them. He hopes to learn how to prevent the cells from dying and how to promote their viability. Ultimately, this work could improve treatment for chronic degenerative disease of the nervous system.

Purves will examine how the nervous system changes over time by following the formation and maintenance of connections among nerve cells in mammals. The point of his work is to understand cellular mechanisms that allow the human nervous system to store information gained from experience.

Malcic speaks at WSWU luncheon

Architect Lawrence M. Malcic will be the guest speaker at the annual spring luncheon of the Women's Society of WU at noon Wednesday, May 16, in the Women's Building Lounge. A business meeting at 11:00 a.m. will precede the luncheon.

Malcic, assistant dean for facilities planning and development of WU's School of Business and Public Administration, will present a slide lecture, titled "Reflections and Directions for WU's Hilltop Campus."

The cost of the luncheon, which is open to the public, is \$7.95. Reservations may be made by mailing a check to the Women's Society of WU, Campus Box 1209, St. Louis, Mo., 63130. The reservation deadline is May 10. For more information, call 889-5295.



Miss America? If Debbie Berman has her way, she will be the next young woman to walk the runway in the Miss America Pageant. Berman, a senior in the College of Arts & Sciences, was named Miss St. Louis on April 7. She will compete for the Miss Missouri title in Mexico, Mo., in July.

CALENDAR

April 26-May 5

Thursday, April 26

8:30 a.m. Teletechnology Symposium, "Telecommunications and Information Systems Issues in the Post-Divestiture." Sponsored by CSDP. Fee is \$15. Call 889-5300.

9 p.m. Hillel Study Break, "Dealing with Divorce." Helen Kornblum, psychotherapist, and Laya Firestone-Seghi, Friedman Lounge, Wohl Center. Call 726-6177.

Friday, April 27

7:30 p.m. Inter-Varsity Christian Fellowship Meeting, "Stress, Test Taking and Academic Pressure." Thomas Trimble, dir. and founder, Christian Psychological Family Services. Green Stuffs Line, Wohl Center.

Saturday, April 28

1 p.m. Grant's Farm Tour, sponsored by the Newman Center, 6352 Forsyth Blvd. For reservations, call 725-3358.

Sunday, April 29

5:45 p.m. Newman Center Monthly Sunday Supper. Newman Center, 6352 Forsyth Blvd. Call 725-3358.

6 p.m. Interdenominational Vesper Service with Paul MacVittie, dir., WU Protestant Center, Graham Chapel.

Monday, April 30

4 p.m. Army ROTC Spring Awards Ceremony. Corner of Millbrook and Skinker blvds. In the event of bad weather, the ceremony will be conducted in Edison Theatre.

7:30 p.m. Go Club Meeting. Third fl. lounge, Women's Bldg. For more info., call 725-9846 or 727-7149.

Tuesday, May 1

10 a.m. Personal Computing Education Center Short Course, "Introduction to Computing Facilities." Free to WU community. For location or to register, call 889-5313.

4 p.m. Dept. of English Shakespeare Birthday Party. Stix House, 6470 Forsyth Blvd.

Friday, May 4

7:30 p.m. Inter-Varsity Christian Fellowship Meeting. Green Stuffs Line, Wohl Center.

LECTURES

Thursday, April 26

1:10 p.m. George Warren Brown School of Social Work Panel Discussion, "Moving Women Up: Overcoming the Barriers." Alice Aslin, WU adjunct asst. prof. of social work; Louise Reeves, acting assoc. dir., Consolidated Neighborhood Services, and Earlyne M. Thomas, manager of urban programs, Ralston Purina. Brown Hall Lounge.

2:30 p.m. Dept. of Mechanical Engineering Colloquium, "Corona Wind and Turbulence in Electrostatic Precipitators." Jane H. Davidson, research asst., Dept. of Mechanical Engineering and Material Science, Duke U. 100 Cupples II.

4 p.m. Dept. of Chemistry Lecture, "Organometallic Electrochemistry: Structure/Electron Count Relationships." William E. Geiger Jr., prof. of chem., U. of Vt. 311 McMillen.

7 p.m. Dept. of Civil Engineering and the Associated General Contractors of St. Louis Panel Discussion, "Construction Contracting Methods." 101 Lopata.

8 p.m. Dept. of History Lecture, "Literature and History: Latin America Today." Carlos Fuentes, WU Visiting Professor in Literature and History. Steinberg Aud.

Friday, April 27

4 p.m. Immunology Research Seminar, "Regulation of Antigen Dependent CTL Clones." Marion Andrew, WU Dept. of Pathology. 509 McDonnell Bldg., 4565 McKinley.

Saturday, April 28

9 a.m. Neural Sciences Lecture, "Federal Guidelines for the Care and Use of Animals in Research: How WU Complies with Them." Roy Peterson, WU prof. of anatomy. 928 McDonnell Bldg., 4565 McKinley.

10 a.m. Dept. of Chemistry Seminar, "Supramolecular Chemistry, Molecular Recognition, Catalysis, and Transport Processes." Jean-Marie Lehn, Universite Louis Pasteur, Strasbourg, France. 311 McMillen Lab.

Sunday, April 29

7:30 p.m. Hillel Foundation Lecture, "Pluralism in Israel." Ephraim Tabory, Israeli sociologist. Hillel House, 6300 Forsyth.

Monday, April 30

3 p.m. Center for Biotechnology Lecture, "Problems in Design and Scale-up in Fermentation Equipment." Marvin Charles, prof. of chem. engineering, Lehigh U. 101 Lopata.

4 p.m. Dept. of Biology Seminar, "Molecular Genetic Studies of Sex Determination in Drosophila." Bruce Baker, Dept. of Biology, U. of Calif.-San Diego. 322 Rebstock.

Tuesday, May 1

11 a.m. Dept. of Civil Engineering Seminar, "On Some New Theoretical Developments in Geometrically Nonlinear Shell Theory and Related Numerical Results." Rudiger Schmidt, Inst. for Mechanics, Ruhr U., Bochum, W. Germany. 216 Urbauer.

Wednesday, May 2

6:30 p.m. New Trends in Medicine Alumni Lecture Series, "Open Heart Surgery: Current Challenges and Future Directions." James L. Cox, WU prof. of surgery, and chief, Division of Cardiothoracic Surgery, WU School of Medicine. WU Club, 335 Mansion House Center. Cost \$11.50 a person. For more info., call 889-5208.

Thursday, May 3

Noon. WU Gallery of Art Talk, "Greek Vases." Sarantis Symeonoglou, WU assoc. prof. of art and archaeology. Gallery of Art, print gallery.

4 p.m. School of Fine Arts Lecture, "The Paintings of the Young Germans." Wolfgang Max Faust, visiting art historian. Steinberg Aud.

Friday, May 4

9 a.m.-5 p.m. 29th George H. Bishop Lecture in Experimental Neurology and Spring Neuroscience Symposium, "Regulation of Sleep States," with lectures by Christian Guilleminault, Stanford U.; Adrian Morrison, U. of Penn.; Robert W. McCarley, Harvard U.; Michael H. Chase, U. of Calif.-Los Angeles; John R. Pappenheimer, Harvard U. Carl V. Moore Aud., 660 S. Euclid.

3 p.m. Dept. of Music Lecture, "Musical Process and Musical Theory." Tim Clark, theorist, St. Louis Conservatory. Blewett B-8.

6 and 8:30 p.m. WU Association Travel Film Lecture, "Superior — Land of the Woodland Drummer." Tom Sterling, filmmaker. Graham Chapel. For ticket info., call 889-5122.

EXHIBITIONS

"Greek Vases." April 29 through August. Gallery of Art, print gallery. 10 a.m.-5 p.m. weekdays; 1-5 p.m. weekends.

"Harry Truman: The Man From Missouri." Through May 1. Olin Library, third level. Open regular library hours.

"Lithography and the 19th-Century Medical Book." Through May 11. Medical Library Annex, 615 S. Taylor. Open weekdays, 8:30 a.m.-5 p.m.

"Master of Fine Arts Thesis Exhibition." Through April 29. Gallery of Art, upper gallery. 10 a.m.-5 p.m. weekdays; 1-5 p.m. weekends.

"Goethe's Narrative Works." Through May 31. Olin Library, Special Collections, fifth level, 8:30 a.m.-5 p.m. weekdays.

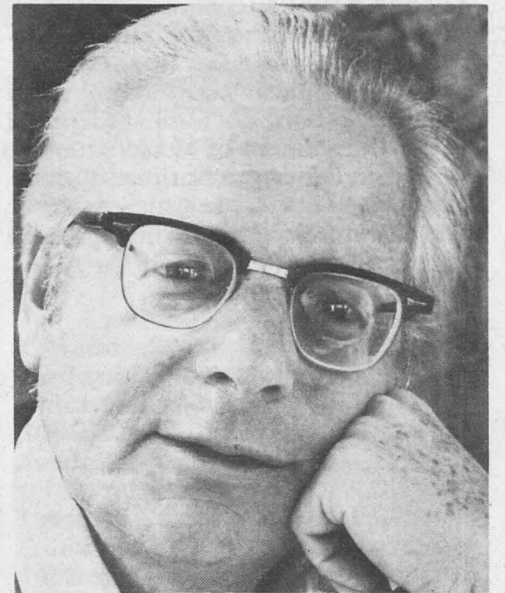
PERFORMANCES

Thursday, April 26

6 and 8 p.m. Annual Fashion Show by School of Fine Arts fashion majors. Bixby Hall, Bixby Gallery. Admission is \$4 for the 6 p.m. performance and \$8 for the 8 p.m. performance.



Pianists Steve Radecke (left) and Leo Smit (right) will perform "The Masters Wrote Jazz II" at 8 p.m. Friday, April 27, in Edison Theatre. In addition, the WU Wind Ensemble will perform selected works. For tickets, call 889-6543.



7:30 p.m. Performing Arts Area presents "The Cauldron." (Also April 27 and 28 at 7:30 and 9:30 p.m.) Drama Studio, Mallinckrodt Center. Admission is \$2. For more info., call 889-5858.

8 p.m. Thyrsus and Student Union Programming Board present "Everything Dances," a student dance concert. (Also Fri., April 27, Sat., April 28, and Sun., April 29, same time.) Dance Studio, 207 Mallinckrodt Center. Admission is \$1 at the door.

Friday, April 27

8 p.m. Edison Theatre presents "The Masters Wrote Jazz II," a concert featuring pianists Leo Smit and Steven Radecke with WU Wind Ensemble players directed by Dan Presgrave. General admission \$8; WU faculty, staff and area students \$5; WU students \$4. For more info., call Edison Theatre box office at 889-6543.

MUSIC

Friday, April 27

8 p.m. Graduate Baroque Oboe Recital with Kerry Willingham. Second Baptist Church, Clayton and McKnight Rds.

Saturday, April 28

8 p.m. WU Civic Chorus Concert with Douglas Weeks, conducting. Graham Chapel.

Sunday, April 29

8 p.m. WU Madrigal Singers Concert with Orland Johnson, directing. Graham Chapel.

Tuesday, May 1

8 p.m. WU Chamber Groups. Tietjens Rehearsal Hall.

Wednesday, May 2

5:15 p.m. WU Choir Concert, directed by David Cameron. Graham Chapel.

8:30 p.m. Dept. of Music Electronic Music Concert with Rich O'Donnell, directing. Tietjens Rehearsal Hall.

FILMS

Thursday, April 26

7 and 9:45 p.m. WU Filmboard Series, "The Tin Drum." \$2. Brown Hall Aud.

Friday, April 27

7:30 and 9:30 p.m. WU Filmboard Series, "Emmanuelle, the Joys of a Woman." \$2. Brown Hall Aud. (Also Sat., April 28, and Sun., April 29, same times, Brown.)

Friday, May 4

8 and 10 p.m. WU Filmboard Series, "Monty Python's Meaning of Life." \$2. Brown Hall Aud. (Also Sat., May 5, 8 and 10 p.m., and Sun., May 6, 7 p.m. Brown.)

Midnight. WU Filmboard Series, "And Now for Something Completely Different." \$1.50. Brown Hall Aud. (Also Sat., May 5, midnight, and Sun., May 6, 9 p.m. Brown.)

SPORTS

Friday, April 27

3 p.m. Men's Tennis, WU vs. Sangamon State U. WU tennis courts.

3 p.m. Baseball, WU vs. DePauw U. Kelly Baseball Field.

Saturday, April 28

1 p.m. Baseball, WU vs. DePauw U. (Double-header) Kelly Baseball Field.

Thursday, May 3

2 p.m. Baseball, WU vs. UMSL. Kelly Baseball Field.

Friday, May 4

2 p.m. Baseball, WU vs. Harris Stowe College. Kelly Baseball Field.

Calendar Deadline

The deadline to submit items for the May 10-19 calendar of the *Washington University Record* is April 26. Items must be typed and state time, date, place, nature of event, sponsor and admission cost. Incomplete items will not be printed. If available, include speaker's name and identification and the title of the event; also include your name and telephone number. Address items to King McElroy, calendar editor, Box 1142.

Student art exhibited at Laclede's Landing

WU's School of Fine Arts will present its first annual Master of Fine Arts Candidates Art Exhibition from May 1 to 12 at Laclede's Landing on the first floor of the Bi-State Building, 707 N. First St.

Works include painting, sculpture, printmaking, multi-media, photography and graphic communications. The artists are: David Adams, David Crook, Sergey Davidov, Greg Edmondson, Elisa Hicks, John Hilgert, Suellen Johnson, Wendy Katz, Binh Ngo, Michael Rosenfeld, Lesa Unterbrink, Nancy Scheinman-Wheeler, Kevin Winters and Steve Wolf.

The opening reception will be from 5 to 8 p.m. Tuesday, May 1. Regular hours are 9 a.m. to 5 p.m. For more information, call 889-6500.