

Washington University School of Medicine

Digital Commons@Becker

Washington University Record

Washington University Publications

8-7-1986

Washington University Record, August 7, 1986

Follow this and additional works at: <https://digitalcommons.wustl.edu/record>

Recommended Citation

Washington University Record, August 7, 1986. Bernard Becker Medical Library Archives.
<https://digitalcommons.wustl.edu/record/380>.

This Article is brought to you for free and open access by the Washington University Publications at Digital Commons@Becker. It has been accepted for inclusion in Washington University Record by an authorized administrator of Digital Commons@Becker. For more information, please contact vanam@wustl.edu.



Washington University RECORD

Indexed

Property of Washington University
Medical Library

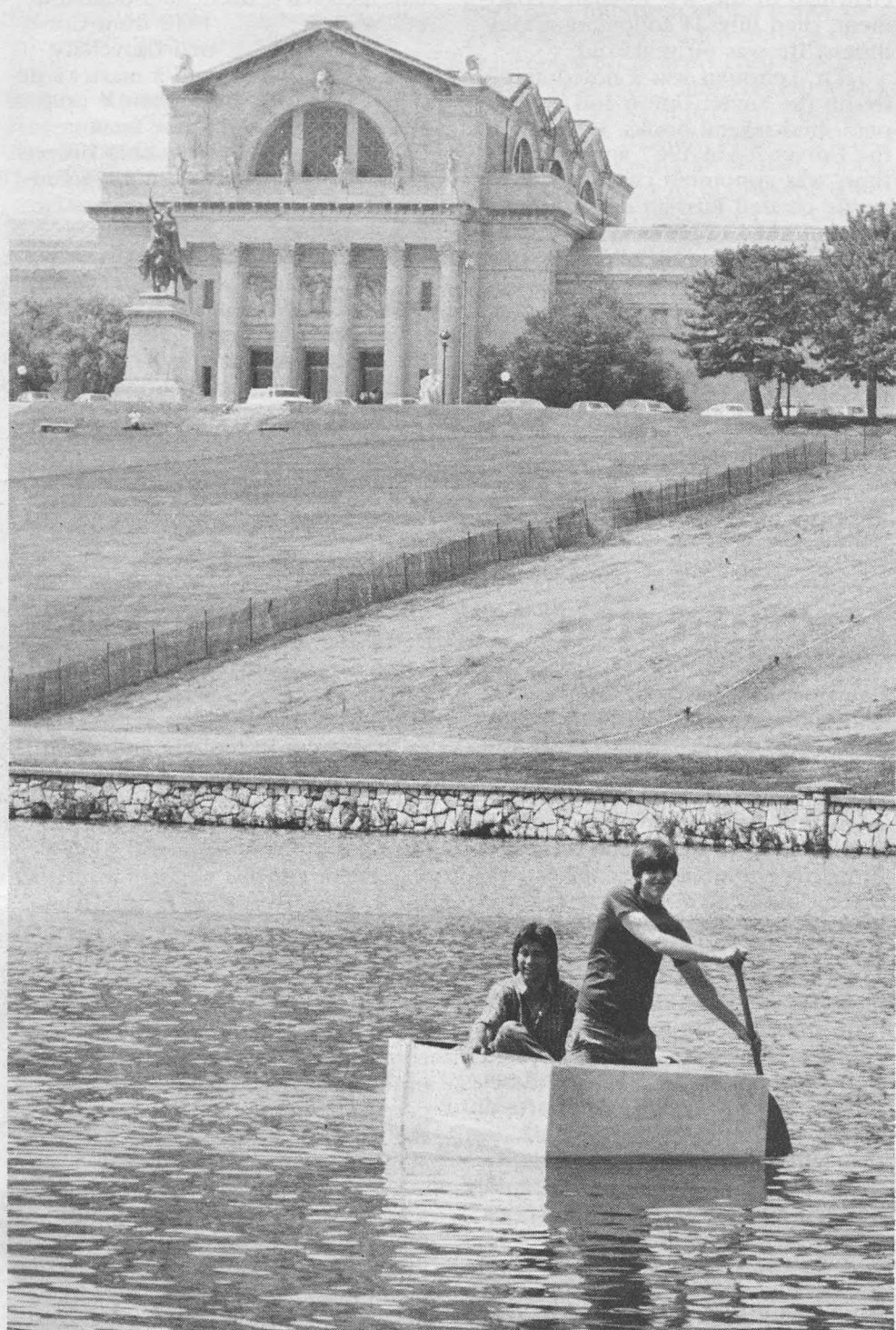
ARCHIVES

AUG 6 '86



WASHINGTON
UNIVERSITY
IN ST. LOUIS

Vol. 11 No. 2/Aug. 7, 1986



Cardboard boat float

Students of Jim Harris, assistant dean of the architecture school, were given an unusual class assignment: to design cardboard boats that would float. Their final test took place July 21 in the Grand Basin just below the Art Museum in Forest Park. The 11 students in Harris' Basic 3-D Design class passed the exam. Their five boats stayed afloat crossing from the north rim of the basin some 80 yards to the south rim and back.

Technology school offers new major; names engineer assistant dean

WU's School of Technology and Information Management will expand its professional engineering programs by offering a new Master of Engineering Management Degree to graduate engineers with at least three years of industrial experience. The degree program will be available this fall. In addition, Robert J. Benson, dean of the school, has named prominent St. Louis business leader Raymond F. Mohrman as assistant dean of the school.

For more than 30 years, Mohrman has served the St. Louis business community as an engineer, marketing manager and corporate president. He joined LaBarge Inc. in 1968 as vice-president of marketing and was named president of the Medical Products Division in 1976. In 1981, Mohrman formed MON-A-THERM

Inc. to purchase LaBarge's medical division. During four years as president of MON-A-THERM, Mohrman more than doubled the firm's sales.

"We are extremely pleased to have an administrator and engineer of Ray Mohrman's stature and capability," said Benson. "His expertise as a business leader will broaden and strengthen the University's professional activities and programs, as well as enhance our ability to interact with the business, industrial and technology communities of the region."

The recently established School of Technology and Information Management, a division of the School of Engineering and Applied Science, combines existing academic programs of the Center for the Study of Data

Continued on p. 2

Venture capital firm, WU form partnership

WU and Alafi Capital Co., a Berkeley, Calif., venture capital organization, have announced the formation of a first-of-its-kind partnership designed to create high-tech start-up companies based on University research discoveries, according to Chancellor William H. Danforth. The new partnership is called A/W Co.

"In this cooperative venture, the partners will concentrate exclusively on what each does best," said Danforth. "Washington University will confine its activities to the conduct of faculty-directed scientific research, the early identification of emerging new research discoveries, and transfer of selected new technology to the partnership organization."

Alafi Capital Co. will manage the partnership, including evaluation of the commercial potential of University technology, preparation of business plans for prospective start-up companies, and incorporation of these companies, according to Moshe Alafi, managing general partner of Alafi Capital Co.

Alafi Capital's responsibilities also will include recruitment of highly motivated management teams, securing required operating capital, initiating further research on candidate technologies and overseeing progress of start-up management teams in accomplishing company business plans.

The A/W Co. is organized as a California limited partnership with

Alafi Capital serving as the managing general partner. WU's role in this commercial operating entity is that of a limited partner, providing new technology, advice and counsel to Alafi Capital — but not participating directly in management of the partnership. Proceeds from the partnership will be shared equally by WU and Alafi Capital Co.

"The A/W partnership provides a stable framework for the next ten years for continued close cooperation between Washington University and Alafi Capital Co.," said Edward L. MacCordy, associate vice chancellor for research. "During development of the partnership arrangement the two organizations gained experience by collaborating to form a new jointly owned start-up company, Field Inversion Technologies Corp., a Missouri corporation which will develop and market a new electrophoresis process," MacCordy stated.

"Now, through this partnership, we anticipate greater effectiveness in bringing biomedical research discoveries to society that will also provide an opportunity for the University and Alafi Capital to participate to a significant degree in local and regional economic development," MacCordy added.

A president and chief operating officer for the A/W Co. is presently being recruited by Alafi. The new president will head an office in St.

Continued on p. 2

Nemerov opens lecture series

Howard Nemerov, prize-winning poet and WU professor of English, will open the University's fall Assembly Series lectures with "Some Poems Instead of a Sermon" at 11 a.m. on Wednesday, Sept. 3, in Graham Chapel.

Nemerov received both the Pulitzer Prize for poetry and the National Book Award for *The Collected Poems of Howard Nemerov* in 1978. His most recent publication is *New and Selected Essays*, 1985.

Other books of verse by Nemerov include *Inside the Onion*, *Sentences* and *The Western Approaches*, *Poems 1973-75*.

Among his many awards and prizes, Nemerov has received a National Institute of Arts and Letters grant in 1961 and the First Theodore Roethke Memorial Award in 1968, and was a Fellow of the Academy of American Poets in 1971.

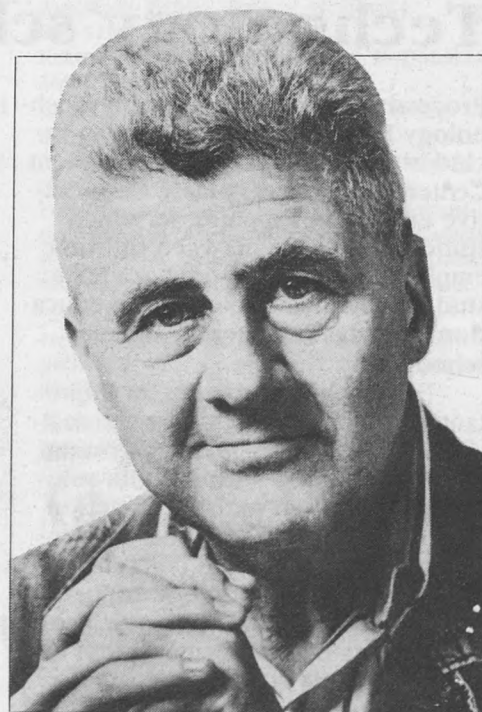
He served as a Consultant in poetry to the Library of Congress in 1963-64, was elected a chancellor of the American Academy of Poets in 1976, and has received honorary degrees from 11 colleges and universities.

Nemerov, who writes poetry, fiction and essays, has published more than 20 books, and has taught at universities for 40 years.

He came to WU in 1969 as a Vis-

iting Hurst Professor of English, and was named the Edward Mallinckrodt Distinguished University Professor of English in 1976. Nemerov received a bachelor's degree from Harvard University in 1941.

The lecture is free and open to the public. For more information, call 889-4620.



Howard Nemerov



Walking through Brookings Quadrangle will be a breeze once the Pluchinskis have finished leveling the bricks and placing them closer together.

Quad under repair

WU pedestrians who've lost their soles in Brookings Quadrangle can now rejoice.

Workmen from Pluchinski Stone Contracting Co. in Spanish Lake are eliminating most of the gaps in the quadrangle's brick walkways. The walkways have caused headaches for many walkers who've gotten their soles and heels stuck in the cracks.

Joe F. Evans, associate vice chancellor for business affairs, says the workers are "leveling the walkways that crisscross the quadrangle and placing the bricks closer together.

The bricks have separated to the point that almost everyone has experienced difficulty, regardless of their shoe height. Hopefully, the work will get rid of this problem." The bricks were laid in 1905.

Evans says walkways directly in front of the quadrangle buildings will not be repaired because the bricks aren't separated like they are in the middle of the quadrangle.

The Pluchinskis, John Jr. and John Sr., began the project in June and hope to complete it sometime in September.

Technology school—*continued from p. 1*

Processing and the Engineering Technology Division. The school also includes the Construction Management Center; the Undergraduate Cooperative Education Program, in which students alternate between full-time employment and full-time academic study; programs in continuing education; and the engineering summer school.

"The school provides an important central resource where the real-life problems of business and industry are addressed with real-life solutions," Mohrman said. "Interaction between the University and private companies allows us to combine our efforts to keep abreast of rapidly changing technology. The new program in engineering management exemplifies the school's ability to respond effectively to the needs of the technological community in the St.

Louis region," he said.

As companies rely on new technologies more and more, the need for managing those resources effectively has become increasingly important, Benson said. The master's degree in engineering management is designed to equip professional engineers with essential tools and experience for the effective management of engineering staffs and high-technology systems or resources. The program is open to engineering graduates with at least three years of relevant industrial experience.

Correction

In the July issue of the WU Record, Dennis O'Brien, chancellor of the University of Rochester, was incorrectly identified as L. Jay Oliva, chancellor of New York University.

Edgar Lehrman, first Russian department chair, dies at 60

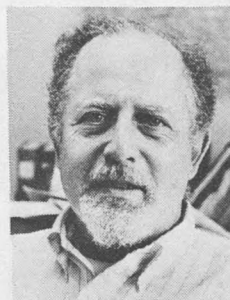
Edgar H. Lehrman, Ph.D., former chairman of the WU Russian department, died July 24 following a long illness. He was 60 years old.

Dr. Lehrman was a noted authority on the Soviet Union and published several books. He came to the University in 1967 and, at that time, was appointed chairman of the newly created Russian department. He continued to serve as chairman of the department until he was hospitalized last January.

Dr. Lehrman formerly had taught at Emory, Duke, Columbia, and Pennsylvania State universities. In addition to teaching, Dr. Lehrman reviewed Russian books and literature for the St. Louis Post-Dispatch.

He traveled extensively in the Soviet Union, and from 1962 to 1963, spent a year in Moscow as a U.S.-Soviet exchange scholar.

Born in New York City, Dr. Lehrman received a bachelor's degree in



Edgar H. Lehrman

1948 from Cornell University, and a master's degree and a doctorate from Columbia University in 1951 and 1954, respectively. He also received a certificate from the Russian Institute at Columbia University in 1956.

Dr. Lehrman is survived by his wife, Ruth Makarova Lehrman, whom he met at the University of Moscow; three daughters, Tanya April and Ellen and Julie Lehrman; his mother, Frances Lehrman; and a brother, Nathaniel S. Lehrman.

Partnership—*continued from p. 1*

Louis dedicated to working closely with University officials and faculty to identify commercially viable new technology and to create aggressive, growth-oriented, high-tech start-up companies to develop and commercialize new products and services. Primarily these new businesses will market biomedical discoveries derived from research programs of the WU School of Medicine.

"The A/W partnership allows biomedical technology emerging from the University's research programs to benefit the public in the shortest possible time. This will be accomplished through the efforts of a respected and talented organization that will proficiently organize and finance start-up companies to rapidly develop and market the discoveries of our faculty," said Danforth.

"At the same time, this cooperative arrangement respects our academic traditions of freedom of the faculty to publish results of their research, freedom to select subjects for research, and freedom to seek project sponsorship from any source. Technology is committed to any outside entity, including the A/W partnership, only with the consent of the faculty investigators. The rights of other industrial organizations which sponsor research at Washington University are not affected by this new arrangement," Danforth said.

Moshe Alafi added: "We have developed a concept which will speed the conversion of basic research results into a new technology of significant benefit to society and which will open new opportunities to further the University's research and public service efforts. This marriage between venture capital and a research university will allow the University to share to a much greater degree in the financial proceeds of the technologies it produces."

Alafi is a founder and member of the board of directors of such companies as Biogen N.V., Applied Biosystems, Andros Analyzers Inc., and most recently Invitron, a new Missouri high-tech company which provides large-scale production of mammalian cell products for the biotechnology and pharmaceutical

industries. He is a graduate of the University of California at Berkeley with degrees in biology and physiology/biophysics.

"The productive and deliberate combination of the resources of Washington University and Alafi Capital Co. in this manner insulates the University and its faculty from involvement in commercial-type activities and potential distraction from primary educational and research objectives. Since each organization will make its own uniquely valuable contribution to the A/W partnership, both will share equally in the proceeds from commercial success of the start-up companies the partnership creates," said MacCordy.

"The faculties of universities are national resources for the creation of new scientific knowledge, which leads with increasing rapidity to new technology for society's improved health and well being," said Chancellor Danforth. "The partnership with Alafi Capital will, in time, provide additional financial support to the University and its faculty for strengthening research and educational programs — support that will lead to further benefits to science and society."

Riverboat cruise greets freshmen

New students at WU will see the city in August as Mark Twain did more than a century ago. Some 1,300 freshmen and transfer students will be treated to a three-hour Mississippi River cruise on The President.

Chancellor and Mrs. William H. Danforth will host the event, which is the highlight of new student orientation at the University. The riverboat leaves downtown St. Louis, at the foot of the Gateway Arch, at 8 p.m. Monday, Aug. 25.

One hundred select faculty members, administrators and student leaders also will be aboard. "This gives the new students a chance to socialize with the people who will be helping them all year," says Faith D. Maddy, associate director of Residential Life.

NOTABLES

Garland E. Allen, Ph.D., professor of biology, has been invited to present a paper at the 350th anniversary of the University of Utrecht, to be held August 27-29 in Holland. The paper will form part of a symposium on "New Trends in the History of Science," organized by the university's Biohistorisch Institute.

Robert R. Bahnson, M.D., assistant professor of urologic surgery, has received a Clinical Oncology Career Development Award from the American Cancer Society for the period July 1, 1986, to June 30, 1988. Awards are given to young physicians who show promise in the treatment of patients with cancer and who plan investigational efforts to determine new strategies in cancer management.

Saul Boyarsky, M.D., J.D., professor of urologic surgery, received the Distinguished Achievement Award from the University of Vermont Medical Alumni Association. It is the highest professional honor presented by the association to an alum. He received his medical degree from the University of Vermont in 1946.

Nicholas C. Burckel, Ph.D., director of Public Services and Collection Development for the WU Libraries, presented a paper, titled "The Challenge of Resources: Communicating Library Human and Financial Needs to College/University Governing Bodies," at the annual meeting of the Midwest Academic Library Conference, held at Iowa State University in Ames.

Michael E. Cain, M.D., assistant professor of medicine, was featured in the June issue of the Video Journal of Cardiology. Cain's segment was titled "Invasive Electrophysiology" and discussed the use of programmed electrical stimulation in the study of arrhythmias. **Philip L. Custer, M.D.**, clinical instructor of ophthalmology, and **Morton E. Smith, M.D.**, professor of ophthalmology, also were featured in the June issue of the Video Journal of Ophthalmology. The segment was titled "Orbital Hemangioma." They discussed the diagnosis and surgical management of this tumor condition.

William J. Catalona, M.D., professor of urologic surgery and chief of the Division of Urologic Surgery, has been elected to the Clinical Society of Genitourinary Surgeons. He is the recipient of the 1986 American Urological Association Gold Cystoscope Award. This award is given annually to a young urologist who has distinguished himself by outstanding contributions to the specialty within 10 years of having completed his urological training.

Lawrence B. Clark, project manager in physical facilities, has been elected a Fellow of the American Society of Civil Engineers (ASCE). Election to the ASCE membership grade of Fellow recognizes an engineer who has made significant technical achievements, is legally registered as a professional engineer or land surveyor and has completed 10 years in responsible charge of engineering

works following his or her election to the grade of Member.

Marilyn M. Cohn, Ph.D., director of teacher education, participated in the annual meeting of the American Educational Research Association in San Francisco. She presented a paper titled "Toward an Understanding of Teachers Who Remain Enthusiastic About Teaching," and co-authored a paper on "Professional and Personal Development in Mid-Career." Also at the meeting, **Louis M. Smith, Ph.D.**, professor of education, presented papers at two symposia. The papers were titled "School Improvement and Educator Personality: Stages, Types, Traits or Processes?" and "The Voyage of the Beagle: Lessons from Charles Darwin." Smith also was elected co-chair of the newly formed Special Interest Group in Qualitative Research. **Alan R. Tom, Ph.D.**, associate professor and department chairman, delivered a paper on "The Disciplined Study of the Problems of Practice" and served as discussant for a paper on teacher evaluation systems and for a symposium on reflective teacher education.

Ronald G. Evens, M.D., Elizabeth E. Mallinckrodt Professor of Radiology and director of the Mallinckrodt Institute of Radiology, and president and chief executive officer of Children's Hospital, has been re-elected treasurer of the American Roentgen Ray Society at its annual meeting in Washington, D.C. Evens has served on the executive council of the society for the past five years. The national organization works to advance medical science through the study of radiology and gives particular emphasis to significant teaching efforts of its members. More than 1,750 physicians belong to the society. Evens also has been elected secretary-treasurer of the Association of University Radiologists at its annual meeting in Hartford, Conn. The association promotes excellence in laboratory and clinical investigation, teaching and clinical practice and seeks to stimulate interest in academic radiology as a career. Its goal is to advance radiology as a medical science and to provide a forum in which university-based radiologists can present and discuss the results of their research, teaching and administrative experience. The association has a membership of 1,300.

Saulo Klahr, M.D., professor of medicine, has been elected a member of the Cardio-Renal Advisory Committee of the Food and Drug Administration. He will serve a four-year term. He also was elected chairman of the Merit Review Board in Nephrology of the Veterans Administration. The board reviews all grants in the renal area for the Veterans Administration. Klahr will serve as chairman for one year.

Robert Lee, Ph.D., dean of minority student affairs at the School of Medicine, has received the School Partnership Program award from the St. Louis Public Schools. Lee was given the award for providing high school students the opportunity to explore career interests in the health care field. Under Lee's direction, WU School of Medicine has been involved in the School Partnership Program for three years.

Norton named Olin fellow

Seth W. Norton, Ph.D., assistant professor of marketing and business economics, is one of seven applicants nationwide chosen to receive a John M. Olin Fellowship for the 1986-87 academic year.

The fellowship, sponsored by the John M. Olin Foundation Inc., enables Norton to take leave from his normal academic duties at the School of Business to do research and write. The fellowship provides a stipend equivalent to his academic salary, plus \$5,000 for summer support.



Seth W. Norton

The annual fellowships are awarded to junior professors in the fields of law, government, economics, public policy, history

and philosophy with an interest in some aspect of public policy or in American political or economic institutions. The fellows are nominated and selected by scholars representing those fields.

Norton, who has been at WU since 1981, plans to study the micro-economic foundations of franchising during his fellowship. His research will focus on why firms select franchise arrangements and the economic effects of these arrangements.

Norton received a bachelor's degree in history from Northwestern University in 1969 and a master's degree in public policy and administration from the University of Wisconsin-Madison in 1971. He received a master of business administration in 1975 and a doctorate in economics and industrial organization with a minor in finance in 1982 from the University of Chicago Graduate School of Business.

publisher, English scholar and personal friend of poet Robert Frost.

John P. Sahrman, D.M.D., assistant professor of orthodontics at the School of Dental Medicine, recently conducted a series of five half-day seminars on orthodontics at four U.S. Navy bases in the Seattle, Wash., area. These seminars were presented to 23 active duty Navy Dental Corps officers and six prosthetic technicians.

Have you done something noteworthy?

Have you: Presented a paper? Won an award? Been named to a committee or elected an officer of a professional organization? The *Washington University Record* will help spread the good news. Contributions regarding faculty and staff scholarly or professional activities are gladly accepted and encouraged. Send a brief note with your full name, highest earned degree, current title and department along with a description of your noteworthy activity to Notables, Campus Box 1070. Please include a phone number.

RECORD

Editor: Susan Killenberg, 889-5254
Assistant Editor: Bridget McDonald, 889-5202

Editor, Medical Record: Betsy McDonald, 362-7569

Washington University Record (USPS 600-430; ISSN 0745-2136), Volume 11, Number 2, Aug. 7, 1986. Published weekly during the school year, except school holidays, monthly in June, July and August, at the Office of News and Information, Campus Box 1070, Washington University, St. Louis, Mo. 63130. Second-class postage paid at St. Louis, Mo.

News items for the medical record section are published once a month and may be sent to Medical Campus, Box 8065.

Address changes and corrections:

Postmaster and non-employees: Send to: *WU Record*, Campus Box 1070, Washington University, St. Louis, Mo. 63130.

Hilltop Campus Employees: Send to: Personnel Office, Campus Box 1184, Washington University, St. Louis, Mo. 63130.

Medical Campus Employees: Send to: Personnel Office, Campus Box 8091, 4550 McKinley Ave., Washington University, St. Louis, Mo. 63130.

Daniel R. Mandelker, J.S.D., Howard A. Stamper Professor of Law and director of the law school's Urban Studies Program, has co-authored an article voted top land use article of 1985 by land use professors in American law schools. The article, titled "The White River Junction Manifesto," deals with the problem of compensation for land use takings. It will be printed in this month's issue of the annual *Land Use and Environment Law Review*, where leading articles in the field are published. Mandelker, a nationally renowned scholar in urban law, wrote the article with three land use attorneys and another land use law professor. Mandelker also published an article titled "Public Entrepreneurship: A Legal Primer" in the summer 1986 issue of the *Real Estate Law Journal*.

Frank W. Miller, S.J.D., James Carr Professor of Criminal Jurisprudence, has co-authored the third edition of his book titled *Prosecution and Adjudication*. The edition is published by Foundation Press.

F. William Orrick, director of the University's Communications Services, has been named Region 4 director of the Association of College and University Telecommunications Administrators. Region 4 includes Missouri, Kansas, Arkansas, Oklahoma and Texas. Among his responsibilities as Region 4 director, Orrick will organize conferences and workshops on various telecommunications topics and he will represent the member institutions at national board meetings.

Bernard D. Reams Jr., J.D., Ph.D., professor of law and director of the law library, has received the 1986 Richard H. Thornton Award for Excellence from the Gold Key Honor Society of Lynchburg College in Lynchburg, Va. The award is presented annually to the Lynchburg graduate whose work exemplifies dedication to academic excellence. Reams, who received a bachelor's degree in English from the college in 1965, is the youngest honoree. The award was established in 1974 to honor Thornton, a 1907 Lynchburg graduate, who was a Massachusetts

CALENDAR

Aug. 7-Sept. 4

LECTURES

Tuesday, Aug. 19

4 p.m. Dept. of Chemistry Seminar, "Organometallic Cluster Chemistry and Catalysis," John S. Bradley, Exxon Research and Engineering Co. 311 McMillen.

Thursday, Aug. 21

4 p.m. Dept. of Chemistry Seminar, "Transition Metal Catalyzed Carbonylation," Ayusman Sen, prof. of chemistry, Pennsylvania State U. 311 McMillen.

Thursday, Aug. 28

4 p.m. Dept. of Chemistry Seminar, "Mechanism and Suicide Inhibition of Ribonucleotide Reductases," JoAnne Stubbe, prof. of biochemistry, U. of Wisconsin-Madison. 311 McMillen.

Wednesday, Sept. 3

11 a.m. Assembly Series Lecture, "Some Poems Instead of a Sermon," Howard Nemerov, Edward Mallinckrodt Distinguished University Professor of English. Graham Chapel.

MUSIC

Thursday, Aug. 28

WU Symphony Orchestra Auditions. To schedule an audition or for more info., call 889-5581. (Also Aug. 29 and 30 and Sept. 1.)

Tuesday, Sept. 2

4-6 p.m. WU Wind Ensemble Auditions. Tietjens Rehearsal Hall. (Also Wed., Sept. 3, same time, Tietjens.)

PERFORMANCES

Monday, Aug. 25

10 a.m. Performing Arts Area Auditions for the dance division. Dance studio, Mallinckrodt Center.

Thursday, Aug. 28

7-11 p.m. Performing Arts Auditions for "On the Edge of the World" and "Endgame." Drama studio, Mallinckrodt Center. (Also Aug. 29, same time, drama studio.)

EXHIBITIONS

"Comets: Starry Messengers, An Exhibit of Rare Books and Uncommon Editions." Special Collections, Olin Library, level 5. Through Aug. 29. Weekdays, 8:30 a.m.-5 p.m.

"Modern Art." Through Aug. 15. Gallery of Art, upper gallery. 10 a.m.-5 p.m. weekdays; 1-5 p.m. weekends. For more info., call 889-4523.

"A Journey to Antiquity," featuring the mummy Pet-menech. Through Aug. 24. Gallery of Art, lower gallery. 10 a.m.-5 p.m. weekdays; 1-5 p.m. weekends. For more info., call 889-4523.

"The School of Paris and Modern Art in Europe." Aug. 24 to Nov. 9. Gallery of Art,

upper gallery. 10 a.m.-5 p.m. weekdays; 1-5 p.m. weekends. For more info., call 889-4523.

"Recent Photographic Acquisitions." Aug. 31-Dec. 28. Gallery of Art, print gallery. 10 a.m.-5 p.m. weekdays; 1-5 p.m. weekends. For more info., call 889-4523.

FILMS

Friday, Aug. 29

7:30 and 9:45 p.m. WU Filmboard Series, "To Live and Die in L.A." \$2. Brown Hall. (Also Sat., Aug. 30, same times, and Sun., Aug. 31, at 7 p.m. Brown.)

Midnight. WU Filmboard Series, "Pink Floyd: The Wall." \$2. Brown Hall. (Also Sat., Aug. 30, same time, and Sun., Aug. 31, at 9:15 p.m., Brown.)

Monday, Sept. 1

7, 8:30 and 10 p.m. WU Filmboard Series, "Duck Soup." \$2. Brown Hall. (Also Tues., Sept. 2, same times, Brown.)

Wednesday, Sept. 3

7 and 9 p.m. WU Filmboard Series, "Exterminating Angel" and "Un Chien Andalou." \$2. Brown Hall. (Also Thurs., Sept. 4, same times, Brown.)

SPORTS

Thursday, Aug. 7

AAU-USA National Junior Olympic Games. WU athletic complex and other locations. For more info, call 889-5220. (Runs Aug. 3-10.)

Sunday, Aug. 31

7:30 p.m. Soccer, WU vs. St. Louis U. Francis Field.

MISCELLANY

Saturday, Aug. 16

8 a.m.-9:30 p.m. Weekend in the Woods Retreat for international students at St. Louis area universities. Speakers include Robert Canfield, WU prof. of anthropology. Sponsored by International Students Inc. (Also Sun., Aug. 17.) For more info., call Dave Greiner, 524-7886.

Monday, Aug. 25

10 a.m.-4 p.m. Giant Plant Sale. First floor lounge, Wohl Center. For more info., call 889-5295.

Calendar Deadline

The deadline to submit items for the Sept. 4-13 calendar of the *Washington University Record* is Aug. 21. Items must be typed and state time, date, place, nature of event, sponsor and admission cost. Incomplete items will not be printed. If available, include speaker's name and identification and the title of the event; also include your name and telephone number. Address items to King McElroy, calendar editor, Box 1070.

Furniture Exchange extends hours

Due to high demand, the Women's Society of WU has extended operations for the Furniture Exchange, a non-profit furniture exchange store run by the organization.

The regular hours for the store, located at 6551 University Drive, is 10 a.m. to 3 p.m. Mondays and Wednesdays. The Furniture Exchange is now open during the same hours Monday through Friday. The change took effect Aug. 4 and will continue through Sept. 5. Regular hours will resume beginning Monday, Sept. 8. The store will be closed Sept. 1 for the Labor Day holiday.

The exchange sells a variety of new and used furniture, including beds, chairs, tables and bookshelves, to all students and first-year faculty

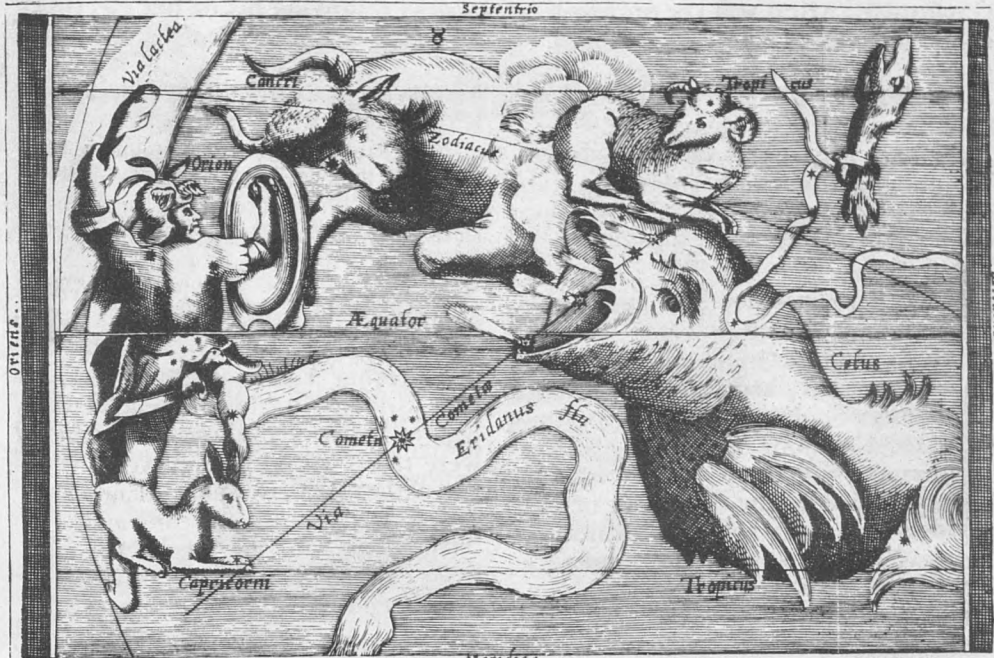
and staff. All proceeds go to the society's scholarship fund.

For more information, call the Furniture Exchange at 889-5206.

Plant sale in Wohl

More than 1,000 plants, ranging from \$1.25 to \$20, will be sold during a giant plant sale from 10 a.m. to 4 p.m. Monday, Aug. 25, in the first floor lounge of Wohl Center, 6515 Wydown Blvd., on campus.

The annual event is sponsored by the Women's Society and the Women's Panhellenic Association of WU. Proceeds will go to the society's scholarship fund and the Panhellenic Association's general fund.



"Comets: Starry Messengers, An Exhibit of Rare Books and Uncommon Editions," which is on display in Olin Library, includes this folding plate showing the course of Halley's Comet with zodiacal figures. The diagram is from *Descriptio Cometae Observati Viennae a die 19 Decembris 1664*.

Rare books, art work star in Olin's comet exhibit

"Comets: Starry Messengers, An Exhibit of Rare Books and Uncommon Editions" is on display in Olin Library. The exhibit includes literary illusions to Halley's Comet written by Shakespeare, Virgil, Tasso, Dante, Edmund Spenser and Edward Young. The exhibit can be seen in Special Collections on level five from 8:30 a.m. to 5 p.m. weekdays through Aug. 29.

Also featured are contemporary accounts and scientific treatises on the comet's appearances from the 15th through the 20th centuries, many of which include striking illustrations.

The exhibit includes the books *Astronomiae Cometae Synopsis* by Edmund Halley, Diderot's *Encyclopedie*, *The Nuremberg Chronicle*

by Hartmann Schedel and three books by Isaac Newton. A 33-volume rare book collection with art work, folding plates, technical charts and other related materials are included in the exhibit. The books are a recent gift to the University.

The collection includes a number of exceptionally rare items, many of which are not represented in the National Union Catalog, the British Library Catalogue or in the standard bibliography *Halley's Comet: A Bibliography* (Library of Congress, 1984).

Of the 33 titles in the collection, three were published in the 16th century, nine in the 17th century and 10 in the 18th century. The earliest title was printed in Nuremberg in 1531.

Drama, dance auditions set

Audition dates for the drama and dance divisions of the WU Performing Arts Area have been set. Drama auditions will be held 7 to 11 p.m. Thursday and Friday, Aug. 28 and 29, in the Mallinckrodt Center drama studio, Room 208.

Actors and actresses are needed for student productions of Samuel Beckett's "Endgame," to be performed Oct. 17-19; and for the world premiere of "On the Edge of the World," by Brian Griffin, winner of the St. Louis Playwrights' Festival, to be performed Nov. 14 and 15 and

Nov. 21 and 22.

Copies of the scripts are available through the Performing Arts Area office. For more information and audition appointment, call 889-5858.

Auditions for the dance division will be held at 10 a.m. on Monday, Aug. 25, in the Mallinckrodt Center dance studio, Room 207.

Students will be observed and instructed by the WU dance faculty and then placed in the proper level class for the academic year.

Morning exercise class meets weekly

A "Morning Exercise" class is being offered to the public by the dance department of the Performing Arts Area. Classes will meet once a week for one hour on Wednesdays from Aug. 20 to Oct. 22 in Edison Studio, Room 207, Mallinckrodt Center. Class meeting time will be flexible, from 7:30 until 9 a.m., to allow for individual needs. The fee for the 10-session class is \$35.

Classes will be taught by Scott Loebl, a 1984 graduate of the WU dance department. The class is designed to heighten mental and

physical awareness and coordination. Exercises will be modified to suit the individual's needs in a non-competitive environment. Principles used by dancers, actors and kinesiologists will be taught.

Registration fees should be mailed along with name, address and phone number to: Morning Exercise, Performing Arts Area, Box 1108. Checks should be made payable to Washington University.

For more information, call 889-5858, 721-5415 or 773-3634.