

6-1-2022

Analysis of electrophysiological activation of the uterus during human labor contractions

Alison G Cahill
University of Texas at Austin

Zichao Wen
Washington University School of Medicine in St Louis

Hui Wang
Washington University School of Medicine in St Louis

Peinan Zhao
Washington University School of Medicine in St Louis

Zhexian Sun
Washington University School of Medicine in St Louis

See next page for additional authors

Follow this and additional works at: https://digitalcommons.wustl.edu/oa_4



Part of the [Medicine and Health Sciences Commons](#)

Please let us know how this document benefits you.

Recommended Citation

Cahill, Alison G; Wen, Zichao; Wang, Hui; Zhao, Peinan; Sun, Zhexian; Schwartz, Alan L; and Wang, Yong, "Analysis of electrophysiological activation of the uterus during human labor contractions." *JAMA Network Open*. 5, 6. e2214707 (2022).
https://digitalcommons.wustl.edu/oa_4/546

This Open Access Publication is brought to you for free and open access by the Open Access Publications at Digital Commons@Becker. It has been accepted for inclusion in 2020-Current year OA Pubs by an authorized administrator of Digital Commons@Becker. For more information, please contact vanam@wustl.edu.

Authors

Alison G Cahill, Zichao Wen, Hui Wang, Peinan Zhao, Zhexian Sun, Alan L Schwartz, and Yong Wang

Analysis of Electrophysiological Activation of the Uterus During Human Labor Contractions

Alison G. Cahill, MD, MSCI; Zichao Wen, PhD; Hui Wang, PhD; Peinan Zhao, PhD; Zhexiong Sun, BS; Alan L. Schwartz, MD, PhD; Yong Wang, PhD

Introduction

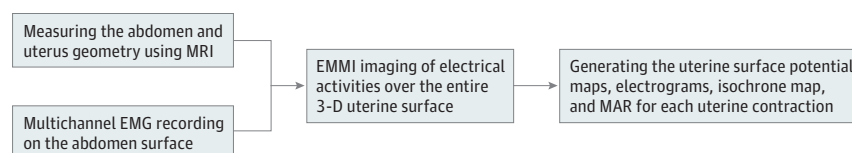
During pregnancy, the human uterus expands up to 500-fold, remains quiescent for 9 months to support fetal development, produces forceful contractions at term to expel the fetus, and then returns to its prepregnancy state.¹ We have a limited understanding of how the uterus accomplishes these feats. For example, we lack answers to basic questions about labor, such as where contractions initiate, how fast contractions propagate, which regions of the uterus are active during contractions, and how these measures change as labor progresses. The recently developed electromyometrial imaging (EMMI) technology² allows for the quantitation of several new parameters (eg, uterine isochrone maps, 3-dimensional [3-D] uterine activation, and maximal activation ratio [MAR]). This study was performed to examine the underlying electrophysiological origins of human labor at the myometrium level.

Author affiliations and article information are listed at the end of this article.

Methods

To explore term human labor with new EMMI-derived electrophysiological indices of uterine activity, we performed a prospective cohort study between August 9, 2017, and June 21, 2021, in an academic, tertiary care center in the Midwest US. This study was approved by the Washington University Institutional Review Board. A total of 18 women with uncomplicated singleton pregnancies were enrolled and signed the informed consent documents. Patients with exposure to medications known to affect uterine contractility, major fetal anomalies, prior spontaneous preterm birth, or contraindications for magnetic resonance imaging were ineligible. Participants at 36 to 38 weeks' gestation underwent magnetic resonance imaging to obtain patient-specific uterine geometry. Once the patient was in active labor (≥ 5 cm dilated with regular contractions), up to 192 electrodes, placed on the patient's abdomen and back, recorded body surface potentials for approximately 1 hour. EMMI data acquisition, data processing, and the resultant parameters are described (**Figure 1**). The primary EMMI outcome was MAR, the percentage of myometrium that is electrically activated during a uterine contraction. Secondary EMMI outcomes included the isochrone

Figure 1. Pipeline of the Clinical Electromyometrial Imaging (EMMI) System



Magnetic resonance imaging (MRI) is performed to generate the patient-specific abdomen and uterus geometry at 36 to 38 weeks of gestation. The patient wears up to 192 MRI-compatible markers during the MRI scan. Abdomen surface electromyograms (EMGs) are simultaneously recorded from up to 192 electrodes placed at the same positions as the MRI markers. EMMI software combines the abdomen-uterus geometry

and abdomen surface EMGs to reconstruct the electrical activities over the entire 3-dimensional (3-D) uterine surface. For each uterine contraction, EMMI will generate uterine surface potential maps with high spatial-temporal resolution, uterine surface electrograms, the chronological sequence of electrical activations across the entire uterine surface (isochrone map), and the maximal activation ratio (MAR).

Open Access. This is an open access article distributed under the terms of the CC-BY License.

map, describing the detailed 3-D activation pattern. The 2-sided *F* test was performed to compare the variance of EMMI-derived electrophysiological indices. *P* < .05 was considered significant.

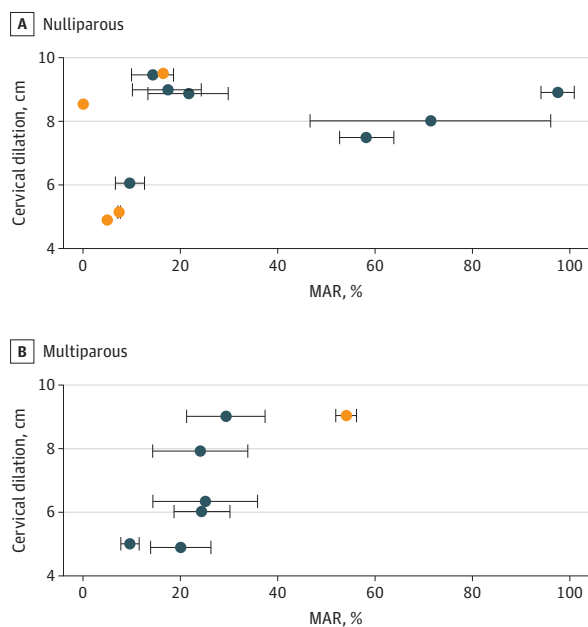
Results

The study population included 11 nulliparous patients (mean [SD] age at delivery, 27.4 [5.5] years; mean [SD] body mass index at last prenatal visit, 30.1 [3.5] [calculated as weight in kilograms divided by height in meters squared]; mean [SD] birth weight, 3347 [196] g) and 7 multiparous patients (mean [SD] age at delivery, 24.9 [4.3] years; mean [SD] body mass index at last prenatal visit, 29.7 [3.8]; mean [SD] birth weight, 3414 [334] g). Among the 18 patients, the mean (SD) MAR in 11 nulliparous patients showed higher variance compared with the MAR in 7 multiparous patients (28.9% [31.9%] vs 26.6% [13.6%]) by the *F* test (ratio of variance, 5.5; 95% CI, 1.0-22.4; *P* = .04). (Figure 2).

Discussion

In this study, we found that the correlation pattern of the EMMI-derived uterine activation index, MAR, and cervical dilation of the nulliparous group was more heterogeneous than that of the multiparous group. The most common methods of monitoring uterine contractions clinically during labor are tocodynamometry and intrauterine pressure catheters, neither of which provide spatial information, which can be observed by EMMI.^{3,4} The uterine magnetic activity has been measured with a superconducting quantum interference device from the anterior abdominal region.⁵ However, a superconducting quantum interference device requires installation in a magnetically shielded room, which significantly limits its wide application in clinical practice. In comparison, the uterine

Figure 2. Primary Electromyometrial Imaging (EMMI) Outcome: Maximal Activation Ratio (MAR)



A, MAR distribution in 11 nulliparous patients was displayed with respect to the cervix dilation measured at the end of EMMI. B, MAR distribution in 7 multiparous patients. The mean (SD) MAR values of all EMMI contractions from each patient are indicated by the circles and the error bars. The orange circles indicate the patients with less than 3 observed contractions during EMMI.

electrical activities can be reliably and cost-effectively measured using bioelectrodes in clinical environments, which enable EMMI to “see” and quantify the uterine contractions in 3-D noninvasively for each patient during labor.⁶ This electrophysiological difference underlying uterine contractions may indicate the existence of myometrial memory, leading to more rapid labor progression of multiparous patients than nulliparous patients. In the short term, EMMI may facilitate translational studies aimed at defining the mechanisms underlying normal human labor.

The major limitations of this study are the cost and accessibility of EMMI and the small patient cohort. We are developing a low-cost, portable, bedside EMMI system that does not rely on magnetic resonance imaging and can be applied to a larger patient cohort in clinical trials aimed at testing interventions to estimate when women experiencing contractions will deliver, how long labor will take, or which women will require intervention to prevent labor arrest, preterm birth, and postpartum hemorrhage.

ARTICLE INFORMATION

Accepted for Publication: April 13, 2022.

Published: June 2, 2022. doi:[10.1001/jamanetworkopen.2022.14707](https://doi.org/10.1001/jamanetworkopen.2022.14707)

Open Access: This is an open access article distributed under the terms of the [CC-BY License](https://creativecommons.org/licenses/by/4.0/). © 2022 Cahill AG et al. *JAMA Network Open*.

Corresponding Author: Yong Wang, PhD, Department of Obstetrics and Gynecology, Washington University School of Medicine in St Louis; 4901 Forest Park Ave, Ste 10201, COH, St Louis, MO 63108 (wangyong@wustl.edu).

Author Affiliations: Department of Women’s Health, Dell Medical School, University of Texas at Austin, Austin (Cahill); Department of Obstetrics and Gynecology, Washington University School of Medicine in St Louis, St Louis, Missouri (Wen, H. Wang, Zhao, Sun, Y. Wang); Department of Pediatrics, Washington University School of Medicine in St Louis, St Louis, Missouri (Schwartz).

Author Contributions: Drs Wen and Y. Wang had full access to all of the data in the study and take responsibility for the integrity of the data and the accuracy of the data analysis. Drs Cahill, Wen, and H. Wang are co-first authors and contributed equally to the manuscript.

Concept and design: Cahill, H. Wang, Schwartz, Y. Wang.

Acquisition, analysis, or interpretation of data: All authors.

Drafting of the manuscript: Wen, H. Wang, Zhao, Schwartz, Y. Wang.

Critical revision of the manuscript for important intellectual content: All authors.

Statistical analysis: H. Wang, Zhao, Sun, Y. Wang.

Obtained funding: Cahill, Schwartz, Y. Wang.

Administrative, technical, or material support: Wen, Schwartz, Y. Wang.

Supervision: Cahill, Schwartz, Y. Wang.

Conflict of Interest Disclosures: Drs Cahill, Schwartz, and Y. Wang reported receiving grants from the National Institutes of Health (NIH)/Eunice Kennedy Shriver National Institute of Child Health and Human Development (NICHD). Drs Schwartz and Y. Wang reported having a patent pending for electromyometrial imaging technology. Dr Y. Wang reported receiving grants from the March of Dimes Center, Burroughs Wellcome Fund Preterm Birth Initiative, and the Bill & Melinda Gates Foundation during the conduct of the study. No other disclosures were reported.

Funding/Support: This work was supported by the March of Dimes Center Grant (22-FY14-486), by grants from the NIH/NICHD (R01HD094381 to Drs Cahill and Y. Wang and R01HD104822 to Drs Cahill, Schwartz, and Y. Wang), by grants from Burroughs Wellcome Fund Preterm Birth Initiative (NGP10119 to Dr Y. Wang), and by grants from the Bill & Melinda Gates Foundation (INV-005417, INV-035476, and INV-037302 to Dr Y. Wang).

Role of the Funder/Sponsor: The funding sources had no role in the design and conduct of the study; collection, management, analysis, and interpretation of the data; preparation, review, or approval of the manuscript; and decision to submit the manuscript for publication.

Additional Contributions: We thank Wenjie Wu, MS, Stephanie Pizzella, BS, Zulfia Kisrieva-Ware, MD, PhD, Hannah Aaron, BS, Yiqi Lin, MS, Hansong Gao, MS, Sicheng Wang, MS, and Haonan Xu, MS, Department of

Obstetrics and Gynecology, Washington University School of Medicine in St Louis; Robert C. McKinstry, MD, PhD, Pamela K. Woodard, MD, and Qing Wang, PhD, Mallinckrodt Institute of Radiology, Washington University School of Medicine in St Louis; and Phillip Cuculich, MD, Department of Cardiology, Washington University School of Medicine in St Louis, for their help in this work, including data collection, study coordination, intellectual contribution, data management, and study recruitment. They were compensated for their contributions.

REFERENCES

1. McEvoy A, Sabir S. *Physiology, Pregnancy Contractions*. StatPearls; 2021.
2. Wu W, Wang H, Zhao P, et al. Noninvasive high-resolution electromyometrial imaging of uterine contractions in a translational sheep model. *Sci Transl Med*. 2019;11(483):eaau1428. doi:10.1126/scitranslmed.aau1428
3. Euliano TY, Nguyen MT, Darmanjian S, et al. Monitoring uterine activity during labor: a comparison of 3 methods. *Am J Obstet Gynecol*. 2013;208(1):66.e1-66.e6. doi:10.1016/j.ajog.2012.10.873
4. Young RC, Barendse P. Linking myometrial physiology to intrauterine pressure; how tissue-level contractions create uterine contractions of labor. *PLoS Comput Biol*. 2014;10(10):e1003850. doi:10.1371/journal.pcbi.1003850
5. Eswaran H, Govindan RB, Furdea A, Murphy P, Lowery CL, Preissl HT. Extraction, quantification and characterization of uterine magnetomyographic activity—a proof of concept case study. *Eur J Obstet Gynecol Reprod Biol*. 2009;144(suppl 1):S96-S100. doi:10.1016/j.ejogrb.2009.02.023
6. Wang H, Wu W, Talcott M, et al. Accuracy of electromyometrial imaging of uterine contractions in clinical environment. *Comput Biol Med*. 2020;116:103543. doi:10.1016/j.compbiomed.2019.103543