

Washington University School of Medicine

Digital Commons@Becker

---

Open Access Publications

---

2010

## Expression of the BabA adhesin during experimental infection with *Helicobacter pylori*

Cathy M. Styer  
*University of California - Davis*

Lori M. Hansen  
*University of California - Davis*

Cara L. Cooke  
*University of California - Davis*

Amy M. Gundersen  
*University of California - Davis*

Sung Sook Choi  
*Washington University School of Medicine in St. Louis*

*See next page for additional authors*

Follow this and additional works at: [https://digitalcommons.wustl.edu/open\\_access\\_pubs](https://digitalcommons.wustl.edu/open_access_pubs)

**Please let us know how this document benefits you.**

---

### Recommended Citation

Styer, Cathy M.; Hansen, Lori M.; Cooke, Cara L.; Gundersen, Amy M.; Choi, Sung Sook; Berg, Douglas E.; Benghezal, Mohammed; Marshall, Barry J.; Peek, Richard M. Jr; Boren, Thomas; and Solnick, Jay V., "Expression of the BabA adhesin during experimental infection with *Helicobacter pylori*." *Infection and Immunity*. 78, 4. 1593-1600. (2010).  
[https://digitalcommons.wustl.edu/open\\_access\\_pubs/2500](https://digitalcommons.wustl.edu/open_access_pubs/2500)

This Open Access Publication is brought to you for free and open access by Digital Commons@Becker. It has been accepted for inclusion in Open Access Publications by an authorized administrator of Digital Commons@Becker. For more information, please contact [vanam@wustl.edu](mailto:vanam@wustl.edu).

---

## Authors

Cathy M. Styer, Lori M. Hansen, Cara L. Cooke, Amy M. Gundersen, Sung Sook Choi, Douglas E. Berg, Mohammed Benghezal, Barry J. Marshall, Richard M. Peek Jr, Thomas Boren, and Jay V. Solnick

## Expression of the BabA Adhesin during Experimental Infection with *Helicobacter pylori*

Cathy M. Styer, Lori M. Hansen, Cara L. Cooke, Amy M. Gundersen, Sung Sook Choi, Douglas E. Berg, Mohammed Benghezal, Barry J. Marshall, Richard M. Peek Jr., Thomas Borén and Jay V. Solnick

*Infect. Immun.* 2010, 78(4):1593. DOI: 10.1128/IAI.01297-09.

Published Ahead of Print 1 February 2010.

---

Updated information and services can be found at:  
<http://iai.asm.org/content/78/4/1593>

---

*These include:*

### REFERENCES

This article cites 33 articles, 20 of which can be accessed free at: <http://iai.asm.org/content/78/4/1593#ref-list-1>

### CONTENT ALERTS

Receive: RSS Feeds, eTOCs, free email alerts (when new articles cite this article), [more»](#)

---

---

Information about commercial reprint orders: <http://journals.asm.org/site/misc/reprints.xhtml>  
To subscribe to to another ASM Journal go to: <http://journals.asm.org/site/subscriptions/>

---

## Expression of the BabA Adhesin during Experimental Infection with *Helicobacter pylori*<sup>†</sup>

Cathy M. Styer,<sup>1,2</sup> Lori M. Hansen,<sup>1,2</sup> Cara L. Cooke,<sup>1,2</sup> Amy M. Gundersen,<sup>1,2</sup> Sung Sook Choi,<sup>4†</sup> Douglas E. Berg,<sup>4</sup> Mohammed Benghezal,<sup>5</sup> Barry J. Marshall,<sup>5</sup> Richard M. Peek, Jr.,<sup>6</sup> Thomas Borén,<sup>7</sup> and Jay V. Solnick<sup>1,2,3\*</sup>

Departments of Medicine and Microbiology and Immunology,<sup>1</sup> Center for Comparative Medicine,<sup>2</sup> and California National Primate Research Center,<sup>3</sup> University of California, Davis School of Medicine, Davis, California 95616; Department of Molecular Microbiology, Washington University School of Medicine, St. Louis, Missouri 63110<sup>4</sup>; Ondek Pty, Ltd., and Marshall Centre for Infectious Diseases and Training, University of Western Australia, Nedlands, WA 6009, Australia<sup>5</sup>; Department of Medicine, Vanderbilt University School of Medicine, Nashville, Tennessee 37232<sup>6</sup>; and Department of Medical Biochemistry and Biophysics, Umeå University, SE-901 87 Umeå, Sweden<sup>7</sup>

Received 19 November 2009/Returned for modification 18 December 2009/Accepted 20 January 2010

The *Helicobacter pylori* *babA* gene encodes an outer membrane protein that mediates binding to fucosylated ABH antigens of the ABO blood group. We recently demonstrated that BabA expression is lost during experimental infection of rhesus macaques with *H. pylori* J166. We sought to test the generality of this observation by comparison of different *H. pylori* strains and different animal hosts. Challenge of macaques with *H. pylori* J99 yielded output strains that lost BabA expression, either by selection and then expansion of a subpopulation of J99 that had a single-base-pair mutation that encoded a stop codon or by gene conversion of *babA* with a duplicate copy of *babB*, a paralog of unknown function. Challenge of mice with *H. pylori* J166, which unlike J99, has 5' CT repeats in *babA*, resulted in loss of BabA expression due to phase variation. In the gerbil, Leb binding was lost by replacement of the *babA* gene that encoded Leb binding with a nonbinding allele that differed at six amino acid residues. Complementation experiments confirmed that change in these six amino acids of BabA was sufficient to eliminate binding to Leb and to gastric tissue. These results demonstrate that BabA expression *in vivo* is highly dynamic, and the findings implicate specific amino acid residues as critical for binding to fucosylated ABH antigens. We hypothesize that modification of BabA expression during *H. pylori* infection is a mechanism to adapt to changing conditions of inflammation and glycan expression at the epithelial surface.

*Helicobacter pylori* is a gastric bacterial pathogen of humans that chronically infects an estimated 50% of the world's population (19). The consequence of long-term infection with *H. pylori* is typically asymptomatic gastritis, but ca. 10 to 15% of those infected will develop peptic ulcer disease or gastric adenocarcinoma (19). Several bacterial virulence factors are found more commonly in *H. pylori* strains that are associated with disease, the best studied of which are the cytotoxin-associated gene pathogenicity island (*cag* PAI) and certain alleles of the vacuolating cytotoxin, VacA. Another bacterial factor that is associated with disease, rather than asymptomatic infection, is the capacity for adherence. Approximately 4% of the *H. pylori* genome encodes a diverse repertoire of outer membrane proteins (OMPs), the largest of which is the 21-gene Hop family (1). BabA is a member of the Hop family that binds Lewis b (Leb) and related terminal fucose residues found on blood group O (H antigen), A, and B antigens that are expressed on the gastric epithelium (3, 6). Some studies suggest that patients infected with strains that express BabA are more

likely to present with ulcer or gastric cancer, particularly if they also have the *cag* PAI and the s1m1 allele of *vacA* (12, 35).

DNA sequence analysis suggests that among the genes encoding Hop family proteins there is considerable potential for both antigenic variation, in which combinatorial DNA shuffling creates antigenically distinct proteins, and phase variation, in which there is reversible on/off switching of gene expression. For example, there is extensive 5' and 3' homology between *babA* and two other *H. pylori* OMPs of unknown function called *babB* and *babC* (1). The greater similarity among *bab* paralogues (within a genome) than among orthologues (across genomes) suggests that there is frequent recombination and concerted evolution among these genes (27). Regions of dinucleotide CT repeats in the 5' coding region of *babA*, *babB*, and other Hop genes may promote phase variation by slipped-strand mispairing during DNA replication. Finally, polynucleotide (A or T) tracts in *babA* and other Hop promoters might alter expression by subtle changes in the spacing between –35 and –10 hexamers. BabA proteins are also highly polymorphic in the variable midregion (26, 27), and they differ by more than 1,500-fold in their affinity for Leb (3).

We recently showed that *H. pylori* strains recovered from experimentally challenged rhesus macaques had lost expression of BabA and the capacity to attach to Leb (33). In some cases the strains underwent a gene conversion event in which

\* Corresponding author. Mailing address: Center for Comparative Medicine, University of California at Davis, Davis, CA 95616. Phone: (530) 752-1333. Fax: (530) 752-7914. E-mail: jvsolnick@ucdavis.edu.

† Present address: College of Pharmacy, Sahmyook University, Seoul, South Korea.

<sup>‡</sup> Published ahead of print on 1 February 2010.

the *babA* gene was replaced by a duplicate copy of *babB*. In other cases the *babA* gene was present in *H. pylori* strains recovered from macaques, but it was not expressed due to phase variation that resulted from gain or loss of one CT repeat in the 5' coding region of *babA*. These results demonstrate that *H. pylori* regulates OMP expression *in vivo* using both antigenic variation and phase variation. Here we sought to extend these observations by comparison of different animal hosts, including primate, mouse, and gerbil, and different *H. pylori* strains. The results indicate that loss of BabA expression and Leb attachment is a robust phenomenon that occurs via multiple genetic mechanisms in different *H. pylori* strains and across diverse animal models. Furthermore, analysis of subtle BabA variants that emerge during colonization permitted the identification of six amino acid changes that are sufficient to eliminate binding to Leb.

## MATERIALS AND METHODS

**Bacterial strains and culture.** *H. pylori* strains J166, J99, and 7.13, which have all been described (2, 11, 33), contain the *cag* PAI, express BabA, and attach to Leb. One strain recovered from a gerbil challenged with 7.13 was studied intensively and designated 8.31. Agar cultures were performed on brucella agar (BBL/Becton Dickinson, Sparks, MD) supplemented with 5% heat-inactivated newborn calf serum (NCS; Invitrogen, Carlsbad, CA) and ABPNV antibiotics (amphotericin B, 20 mg/liter; bacitracin, 200 mg/liter; polymyxin B, 3.3 mg/liter; nalidixic acid, 10.7 mg/liter; vancomycin, 100 mg/liter [all from Sigma]). *H. pylori* liquid cultures for inoculation were grown in brucella broth with 5% NCS and ABPNV for ca. 24 h (optical density at 600 nm [OD<sub>600</sub>], 0.35 to 0.45), pelleted by centrifugation, and suspended in brucella broth.

**Animals and experimental challenge.** (i) **Mice.** Specific-pathogen (*Helicobacter*)-free, female C57BL/6 (Taconic, Germantown, NY), C3H/HeJ (Jackson Laboratories, Bar Harbor, ME), and FVB/N (National Cancer Institute; Frederick, MD) mice ( $n = 4$  to 6/strain) were used. Mice were housed in microisolator cages and provided with irradiated food and autoclaved water *ad libitum*. At 10 to 12 weeks of age the mice were challenged three times at 2-day intervals with  $2.5 \times 10^9$  CFU of *H. pylori* J166 suspended in 0.25 ml of brucella broth; the challenge was administered by oral gavage with a ball-end feeding needle. All mice were fasted 3 to 4 h before and after inoculation and were euthanized 2 weeks later with an overdose of pentobarbital sodium injection (50 mg/ml). The stomach was cut longitudinally, and half was placed in brucella broth, weighed, ground with a sterile glass rod until the mucosal cells were homogenized, and then plated quantitatively by serial dilution on brucella agar supplemented with 5% NCS and ABPNV.

(ii) **Monkeys.** Two male rhesus macaques (7 and 8 years old) were raised at the California National Primate Research Center from the day of birth using methods previously described (31, 32) to ensure that they had normal gastric histology and were free of *H. pylori* infection. Animals were housed individually and fed commercial primate chow (Purina) and fruit, with water available *ad libitum*. The rhesus macaques were orogastrically inoculated with  $10^9$  CFU of *H. pylori* J99 suspended in 2 ml of brucella broth. Endoscopy was performed with ketamine anesthesia (10 mg/kg given intramuscularly) after an overnight fast at 1, 4, 8, 12, and 18 weeks postinoculation. Four mucosal biopsy specimens each were obtained from the gastric antrum and corpus and were cultured as described for the mice.

(iii) **Gerbils.** Male Mongolian gerbils ( $n = 2$ ; Harlan Labs, Indianapolis, IN) at 4 to 8 weeks of age were orogastrically challenged three times at 2-day intervals with  $10^9$  CFU of *H. pylori* 7.13 suspended in 0.8 ml of brucella broth. Gerbils were anesthetized with CO<sub>2</sub> and euthanized with cervical dislocation at 12 weeks postinoculation. The stomachs were removed, and the glandular portions were divided in half. One half was ground with a sterile glass rod until the mucosal cells were homogenized and then plated quantitatively by serial dilution on brucella agar supplemented with 5% NCS and ABPNV.

Culture plates from mice, monkeys, and gerbils were incubated for up to 6 days at 37°C in 5% CO<sub>2</sub>. *H. pylori* was identified in the conventional manner by colony morphology (pinhead-sized translucent colonies), microscopy (Gram-negative curved organisms), and biochemistry (oxidase, catalase, and urease positive). Single colonies were expanded and frozen at -80°C in brucella broth containing

20% (vol/vol) glycerol. All animals were housed under protocols approved by ALAAC and the Institutional Animal Care and Use Committee.

**Leb adherence assay.** Attachment of *H. pylori* to the Leb blood group antigen was measured in duplicate by using an enzyme-linked immunosorbent assay as described previously (12). Briefly, Leb conjugated to human serum albumin (Isosep, Tullinge, Sweden) was immobilized on polystyrene 96-well microtiter plates (Nalgene; Nunc) and incubated with digoxigenin-labeled (Roche Molecular Biochemicals) *H. pylori* harvested from 48-h plate cultures. Bound bacteria were detected using anti-digoxigenin antibody conjugated to horseradish peroxidase and ABTS [2,2'-azino-bis(3-ethylbenzthiazolinesulfonic acid)] solution (Roche Molecular Biochemicals). Extinction was quantified in a microplate reader (Bio-Rad) using a dual wavelength (405/490 nm), and the Leb adherence ratio was expressed as the ratio of the OD of wells coated with Leb to that of uncoated control wells.

**DNA sequence analysis of *babA* and *babB*.** DNA was prepared from single colony isolates by using the CTAB (cetyltrimethylammonium bromide) extraction method (4). In *H. pylori* J166, *babA* (JHP0833) is downstream of *hypD* (JHP0835) and *babB* (JHP1164) is downstream of *s18* (JHP1165). Both *babA* and *babB* contain eight pairs of CT repeats in the 5' end of the gene. Phase variation by slipped-strand mispairing that deletes or adds a CT repeat may result in loss of the open reading frame (ORF) and, in the case of *babA*, loss of the Leb attachment. To determine the ORF status of *babA* and *babB* in *H. pylori* J166, PCR was performed using standard conditions and gene-specific primers (Table 1) to amplify a 1,500- to 2,000-bp fragment that contained *babA* (primers HypDF1 and BabAR1) or *babB* (primers S18F1 and BabBR1) as previously described (7). Primers P160R and P178R were then used to sequence ~450 bp of J166 *babA* and *babB*, respectively, which contained the CT repeats. PCR of *H. pylori* J99 was performed with primers (HypDF1 and BabAR10) to amplify and sequence the first 1,281 bp of *babA* from rhesus output strains that did not attach to Leb (Leb adherence ratio < 1.5). If the *babA* gene was not detected, we used primers (HypDF1 and BabBR1) to amplify and sequence 772 bp of *babB* at the *babA* locus. *H. pylori* 7.13 contains two *babA* alleles (and no *babB*): *babA2* downstream of *hypD* and *babA1* downstream of *s18*. The full-length *babA2* gene from *H. pylori* 7.13 and from gerbil output strain 8.31 was amplified and sequenced in two fragments (primer pair HypDF1 and BabAR129 and primer pair BabAF4 and BabAR927). Full-length *babA1* from 7.13 and 8.31 was amplified and sequenced in two fragments (primer pair S18F1 and BabAR129 and primer pair BabAF4 and 1162R). All DNA sequencing was performed on both strands of purified PCR fragments (QIAquick PCR purification kit; Qiagen, Valencia, CA) using dye terminator sequencing chemistry.

**Immunoblotting.** Bacterial cells were sonicated and the supernatants were quantitated by using a Bradford assay (Bio-Rad, Hercules, CA). Control proteins were prepared from wild-type *H. pylori* J166, and its isogenic *babA* knockout was created by allelic exchange using methods similar to those described previously (16). For each blot, 10 µg of total protein was used for SDS-PAGE, followed by transfer to a polyvinylidene difluoride membrane (Hybond-P; GE Healthcare, Piscataway, NJ). BabA was detected with polyclonal antibody (AK277) kindly provided by Stefan Odenbreit (25), with detection by enhanced chemiluminescence peroxidase anti-rabbit antibodies (GE Healthcare) and visualization by chemiluminescent signal on a Typhoon Imager 9410 (GE Healthcare).

**Contraselection for genetic exchange of *babA*.** Contraselectable streptomycin susceptibility was used essentially as described previously (9) to exchange *babA* genes between *H. pylori* 7.13 (gerbil input) and 8.31 (gerbil output), except that the *erm* gene was replaced with a *cat* resistance gene. To make the *cat-rpsL* cassette, *cat* was amplified (primers UF1 and CamF, Table 1) from *H. pylori* containing a *cat* insert in the urease gene (34), and *rpsL* was amplified (primers RpsLCamR and UR6) from the *erm-rpsL* cassette (9). Because the primer RpsLCamR (from the *rpsL* gene) overlaps at its 5' end with the primer CamF (from the *cat* gene), the *cat* and *rpsL* fragments could be ligated by amplification with primers UF1 and UR6. The 1.4-kb *cat-rpsL* cassette was then amplified by primers RpsLF and C2CamR, which contained SacI and BamHI restriction sites at the 5' ends, and ligated to amplified fragments of DNA upstream (1.8 kb, primers HypDF2 and BabAR1252) and downstream (1.5 kb, primers 0895R and BabAF1253) of *babA2* that contained complementary restriction sites. *H. pylori* 7.13 was made streptomycin resistant by transformation with genomic DNA from a mutant of strain 26695, which contained an A-to-G change at codon 43 of *rpsL*, and selection on streptomycin (10 µg/ml). *babA2* was then deleted from streptomycin-resistant 7.13 by transformation with the *cat-rpsL* cassette, with its flanking arms from *babA2*, and selection on chloramphenicol (5 µg/ml). The *babA2* gene was reinserted by transformation of the *babA2* knockout of 7.13 with *babA2* amplified from either 7.13 or 8.31, and selection on streptomycin. Streptomycin-resistant, chloramphenicol-sensitive colonies were fully sequenced at the *babA2*

TABLE 1. Primers used for amplification and sequencing

Primer	Designation <sup>a</sup>	Gene	Position <sup>b</sup>	Sequence (5'–3') <sup>c</sup>
P160R	JHP0833	<i>babA</i>	444–424	ATACCCTGGCTCGTTGTTGAA
BabAF4	JHP0833	<i>babA</i>	856–876	GCGAGCACGCTCATTAACACC
BabAF1253	JHP0833	<i>babA</i>	2193–2216	AACGGATCCCAGGCTTTATAGCGTGTATTGAA
BabAR1	JHP0833	<i>babA</i>	723–705	TTTGCCGTCTATGGTTTGG
BabAR129	JHP0833	<i>babA</i>	1002–983	CATCTTTTGGATCGCGCTGA
BabAR10	JHP0833	<i>babA</i>	1281–1261	ACCAGTACCAGCGGTTGATGG
BabAR1252	JHP0833	Intergenic	–17 to –46*	AACGAGCTCGGATTAAATTGGATTAGTATTAGGGATTTC
BabAR927	JHP0833	Intergenic	997–977†	GTTTCATTATAGCACAAAGCGAT
HypDF1	JHP0835	<i>hypD</i>	675–697	TTTTGAGCCGGTGGATATATTAG
HypDF2	JHP0835	<i>hypD</i>	627–648	AATGCGGCCCGCTATGCTCCTTTAGTGGATCGC
0895R	NA <sup>d</sup>	Predicted	288–267	AATCTCGAGCACATCTCTCATGGCTTGTTC
1162R	JHP1162	Predicted	247–228	CTCCCTTGCGGTATAACCG
BabBR1	JHP1164	<i>babB</i>	772–750	TCGCTTGTTTAAAAGTGGATAGATTGA
S18F1	JHP1165	<i>s18</i>	197–218	CTTTAATCCCCTACATTGTGGA
P178R	JHP1164	<i>babB</i>	481–459	CATGTCCTGGCTCATAATACGAA
UF1	NA	<i>cat</i>	NA	CGACTTTGGTTAACC CGCAAATCCCAT
CamF	NA	<i>cat</i>	NA	GATATAGATTGAAAAGTGGATAGATTGA
C2CamR	NA	<i>cat</i>	NA	AACGGATCCTTATCAGTGCACAACTGGGAT
RpsLCamR	NA	<i>rpsL</i>	NA	<b>TAAATCTATCCACTTTTCAATCTATATCATCTAACGGATTG</b> TCTGTATG
UR6	NA	<i>rpsL</i>	NA	GGGCGTGGTGGATTATGTGTATTA
RpsLF	NA	<i>rpsL</i>	NA	AACGAGCTCGATGCTTTATAACTATGGATTAAACAC

<sup>a</sup> The designation corresponds to *H. pylori* strain J99.

<sup>b</sup> The position corresponds to *H. pylori* strain J99. \*, This position is in the intergenic region upstream from the *babA* start codon in *H. pylori* strain 7.13; †, this position is in the intergenic region downstream from the *babA* stop codon in *H. pylori* strain 7.13.

<sup>c</sup> Boldface nucleotides are complementary to the primer CamF.

<sup>d</sup> NA, not applicable.

locus to confirm that they had undergone the desired genetic exchange and then tested for Leb adherence as described above.

**In situ histosection adherence assay.** Gastric tissue from *H. pylori*-infected and uninfected gerbils was used to detect *H. pylori* binding to tissue sections using methods previously described (6, 10). Briefly, bacterial cells were washed three times in phosphate-buffered saline (PBS), resuspended in 0.1 M carbonate buffer (0.15 M NaCl, pH 9) at an OD<sub>600</sub> of 1.0, and then labeled by incubation with 10  $\mu$ l of fluorescein isothiocyanate (FITC; 10 mg of 0.1 M carbonate buffer/ml). Bacteria were then incubated in the dark for 10 min, washed three to five times in 900 ml of blocking buffer (1% bovine serum albumin in PBS-Tween 20) or until the supernatant was clear, and adjusted to an OD<sub>600</sub> of 1.0 in blocking buffer. FITC-labeled bacteria were diluted (20  $\mu$ l in 80  $\mu$ l of blocking buffer) and incubated for 2 h in the dark with deparaffinized tissue that had been rehydrated and blocked with 100  $\mu$ l of blocking buffer overnight. Slides were washed in PBS-Tween 20, protected with a coverslip applied with mounting medium (Pro-Long Gold Antifade Reagent; Invitrogen, Eugene, OR), and dried overnight. Labeled bacteria were viewed with a fluorescence microscope (Zeiss Axioskop). Quantitation of bound fluorescent bacteria was performed on images of tissue sections using ImageJ software (<http://rsbweb.nih.gov/ij/>) [National Institutes of Health, Bethesda, MD]. Images were cropped to retain only gastric mucosa and split into red, green, and blue channels using the RGB split command. The green channel was used to calculate the area of bound fluorescent bacteria because it provided maximal contrast between the fluorescence and the rest of the mucosa. The area of fluorescence was divided by the total area of the mucosal epithelium for each image.

**Accession numbers.** The DNA sequences for *babA2* and *babA1* in *H. pylori* 7.13 and 8.31 were deposited in GenBank under accession numbers GQ272324 to GQ272327.

## RESULTS

***H. pylori* J99 recovered from monkeys shows loss of BabA expression and Leb binding by both mutation and by gene conversion.** We previously reported that infection of specific-pathogen-free (SPF) rhesus monkeys with *H. pylori* J166 resulted in the accumulation of *babA*-null variants, either by gene conversion or by phase variation in a poly(CT) tract in the 5' region of *babA* (33). To test the generality of this finding, we

challenged SPF macaques with normal gastric histology using *H. pylori* J99, which does not have CT repeats in *babA* and has not been used previously to challenge monkeys. Although single colonies recovered 1 week after challenge bound Leb, binding decreased significantly with time (Kruskal-Wallis, two tailed,  $P < 0.001$ ), and by 8 weeks postinoculation Leb binding was typically lost (Fig. 1). To characterize the mechanism for loss of Leb binding, we sequenced *babA* from all output strains that had lost Leb binding. In one monkey (animal 30364), 11 output strains that lost Leb binding had acquired a single base-pair mutation at

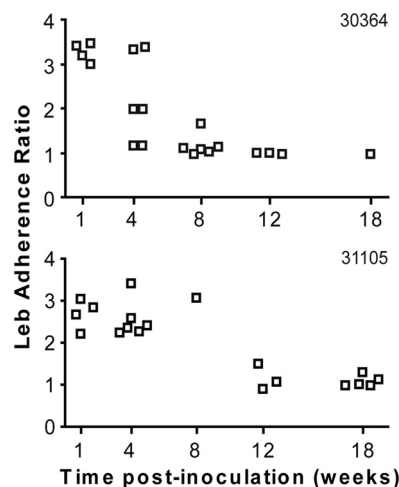


FIG. 1. Leb adherence ratio for individual *H. pylori* colonies isolated from two rhesus macaques (30364 and 31105) 1 to 18 weeks after inoculation with strain *H. pylori* J99. *H. pylori* attachment to Leb decreased significantly with time after inoculation (Kruskal-Wallis test, two tailed,  $P < 0.001$ ).



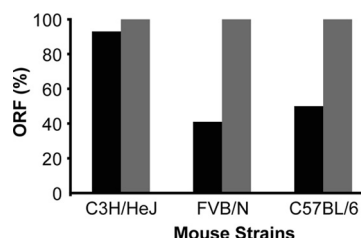


FIG. 2. Percentage of *H. pylori* output colonies with an ORF for *babA* (■) and *babB* (▒) 2 weeks postinoculation with strain J166 in three strains of mice ( $n = 4$  to 6 mice/strain). Percentages were calculated as a fraction of total colonies (13 to 32 per strain) isolated from each mouse strain. An ORF was present if DNA sequencing demonstrated the presence of eight CT dinucleotide repeats in the 5' end of *babA*. Out of frame sequences had seven or nine CT repeats, which resulted in a stop codon at bp 78 (addition of CT) or bp 48 (loss of CT).

position 853 in the *babA* ORF that encoded a stop codon. In comparison, eight output strains that lost Leb binding from a second monkey (animal 31105) underwent a gene conversion event in which *babA* was replaced with a second copy of *babB*. Immunoblot analysis of representative output colonies that acquired a stop codon in *babA* or that underwent gene conversion of *babA* by *babB* showed that in each case the BabA protein was not expressed (data not shown). These results confirm our previous observation that BabA expression is lost *in vivo* and extend the results to different monkeys challenged with a different *H. pylori* strain.

***H. pylori* J166 undergoes loss of BabA expression by phase variation during colonization of mice.** To determine whether loss of BabA expression seen in monkeys is characteristic of other mammalian hosts, we inoculated *H. pylori* J166 into C57BL/6, C3H/HeJ, and FVB/N mice ( $n = 4$  to 6 mice per strain) and recovered *H. pylori* colonies when the animals were sacrificed 2 weeks later. The mean colonization density of *H. pylori* was  $\sim 10^4$  CFU/g of stomach tissue in all mouse strains. *H. pylori* J166 *babA* and *babB* each contain eight pairs of CT repeats at the 5' end of the gene. To determine the ORF status of *babA* and *babB*, PCR and DNA sequence analysis were performed on 13 to 32 single colonies recovered from each mouse strain. In colonies recovered from C57BL/6 and FVB/N mice, there was frequently loss or gain of a dinucleotide CT repeat, so that a *babA* ORF was present in only 50 and 41% of output colonies, respectively (Fig. 2). In contrast, frameshift mutations were uncommon in colonies recovered from C3H/HeJ mice, in which 93% of bacteria had an intact *babA* ORF (Fig. 2). Since *babB* also has CT repeats, we next sequenced the 5' portion of *babB* to determine whether an ORF was present. In contrast to *babA*, every colony recovered from each of the three mouse strains contained an intact *babB* ORF (Fig. 2). Sequence analysis of *babA* from 22 single colonies of the input J166 demonstrated that an ORF was present in 100%, which suggests that a frameshift mutation with loss of BabA expression was selected during colonization of C57BL/6 and FVB/N mice.

To confirm the significance of number of CT repeats, we analyzed protein expression and binding to Leb for representative single colony isolates from mouse output strains that contained seven (loss of one CT), eight (wild type), or nine (gain of one CT) pairs of CT repeats. Output strains that had

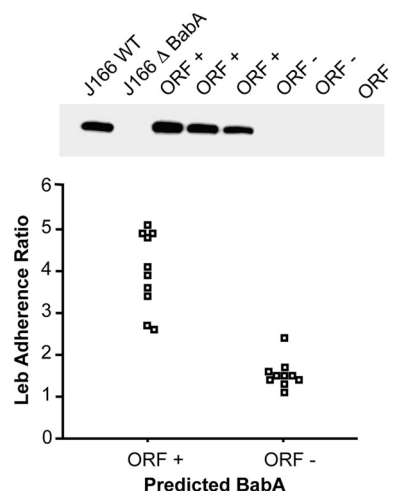


FIG. 3. Verification of expression and Leb adherence in *H. pylori* J166 with a *babA* ORF. Immunoblot of representative single-colony isolates from mouse output strains with an in frame (ORF+) or out of frame (ORF-) *babA* gene probed with antibody to BabA (top panel). Wild-type *H. pylori* J166 (J166WT) and an isogenic *babA* knockout (J166 $\Delta$ *babA*) served as controls. Only strains with the *babA* ORF expressed protein. Analysis of Leb binding (bottom panel) of *H. pylori* J166 single-colony mouse output strains showed that those with a *babA* ORF showed significantly greater attachment to Leb (Mann-Whitney U test, two tailed,  $P < 0.001$ ).

not undergone phase variation expressed BabA protein and had high Leb binding affinity (Fig. 3). In contrast, output strains that had lost or gained a CT repeat did not express BabA and had significantly less binding to Leb (Mann-Whitney U test, two tailed,  $P < 0.001$ ). These results confirm that analysis of the *babA* ORF reflects BabA expression and attachment to Leb.

***H. pylori* 7.13 recovered from gerbils loses attachment to Leb and undergoes gene conversion of a functional *babA* with a second *babA* copy.** We next extended these observations to the gerbil model of *H. pylori*, which is unique in that animals develop adenocarcinoma that resembles that seen in humans. Male Mongolian gerbils ( $n = 2$ ) were inoculated with *H. pylori* strain 7.13 and sacrificed 12 weeks later. Input 7.13 binds Leb (adherence ratio = 2.258) and expresses BabA protein on immunoblot (not shown). Analysis of four output colonies from each animal showed that Leb binding was lost after 12 weeks of colonization, with a mean adherence ratio of 1.101 (standard error [SE]  $\pm 0.03$ ) and 1.374 (SE  $\pm 0.07$ ), respectively. To examine the mechanism by which Leb attachment was lost, we performed immunoblots on one output colony from each animal that did not attach to Leb. Surprisingly, both output strains expressed BabA protein (data not shown). DNA sequence analysis showed that the predicted BabA protein from both output colonies differed at six amino acid residues compared to that in strain 7.13 (Fig. 4). Since these changes would be unlikely to arise independently in two animals, we suspected that a recombination event may have occurred, similar to what we observed previously when *babB* converted *babA* (33). Previous studies showed that some strains of *H. pylori* have a second *babA* allele at the *babB* locus (7, 17). Therefore, we amplified and sequenced the *babB* locus of strain 7.13 and compared it to that in the gerbil output strain 8.31. The results

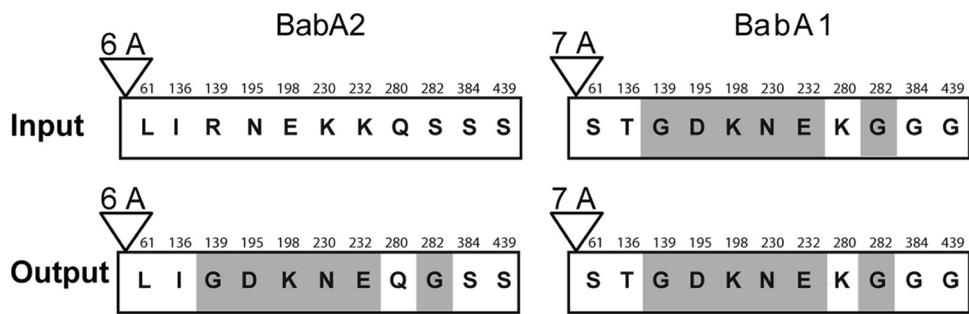


FIG. 4. Schematic representation of the gene conversion event that occurred in *H. pylori* strain 7.13 after 12 weeks of colonization in gerbils. Input strain 7.13 has an expressed BabA2 and a silent BabA1, which has one additional adenine residue in a polynucleotide tract (7A versus 6A) that begins immediately after the ATG start codon and results in a stop codon at bp 61. Shown are the 11 amino acid residues (single-letter designations numbered according to the mature protein after removal of the signal peptide) for BabA1 that differ from those predicted in BabA2 if the protein were expressed. Gerbil output strain 8.31 has undergone gene conversion of *babA2* by *babA1*. The recombination occurred so as to retain the 6A polynucleotide tract, so BabA2 is expressed, but the replacement of 6 amino acids from BabA2 with those from BabA1 (shaded) is sufficient to eliminate binding to Leb.

showed that strain 7.13 has two copies of *babA*: one at the J99 *babA* locus that has an ORF and a second at the J99 *babB* locus that does not have an ORF due to addition of a single adenine in a short poly(A) tract at the 5' end of the gene (Fig. 4). We designate these genes *babA2* and *babA1*, respectively, by analogy with the initial description in *H. pylori* 17875, which has an expressed gene designated *babA2* and a silenced gene designated *babA1* (17). DNA sequence analysis in output strain 8.31 that did not bind Leb showed that it had undergone a gene conversion event in which a portion of *babA1* replaced *babA2* (Fig. 4). Identical results were obtained in a second output strain (data not shown). The recombination event in the output strains occurred so as to retain the poly(A) tract length of *babA2* (six adenines) rather than *babA1* (seven adenines), which is consistent with the immunoblot that showed expression of BabA protein. At amino acid 280 the gerbil output strain has Q in BabA2 and not K as in BabA1. This may represent a simple mutation, since the codon for K (lysine) and Q (glutamine) differ only at the first nucleotide. Alternatively, this might be a gap in integration, in which a single-nucleotide-polymorphism (SNP) unique to *babA2* in 7.13 (codon for Q, glutamine) is flanked by SNPs unique to *babA1* (20). *babA1* is identical in strains 7.13 and 8.31. BabB was not detected in strain 7.13 by DNA sequence analysis or by immunoblot (data not shown). This is consistent with the observation that strain B128, which is the parent strain to 7.13 (11), does not contain *babB* (24).

**Six amino acid changes in BabA2 are sufficient to eliminate binding to Leb and to gastric tissue.** Gene conversion of *babA2* with *babA1* yielded output strain 8.31 that no longer attached to Leb, and that contained a BabA2 that was modified by a change in six amino acid residues (Fig. 4). To determine whether these six amino acid changes were sufficient to eliminate Leb binding, we used contraselection (9) to move *babA* alleles between strains 7.13 and 8.31. The *babA2* gene of streptomycin-resistant *H. pylori* 7.13 was deleted by homologous recombination with the *cat-rpsL* cassette (chloramphenicol resistance, dominant streptomycin susceptibility) and then transformed with the desired *babA2* gene amplified from 7.13 or 8.31. Transformants that were chloramphenicol susceptible and streptomycin resistant (due to loss of the cassette) were

screened for the appropriate *babA* gene by full-length DNA sequence analysis of *babA2*, and the desired clones were tested for adherence to Leb (Table 2). As expected, attachment to Leb was observed for the ancestral *H. pylori* 7.13 but not for  $\Delta babA2::cat-rpsL$  derivatives of 8.31 or 7.13. Replacement of *babA2* in 7.13 with *babA2* from 8.31 eliminated attachment to Leb, which demonstrated that the six amino acid differences (Fig. 4) between these two alleles were sufficient to eliminate Leb binding. In a control experiment, replacement of  $\Delta babA2::cat-rpsL$  with the original *babA2* from 7.13 restored the wild-type phenotype as expected (Table 2). These results demonstrated that one or more of the six amino acid differences (Fig. 4) between these two alleles were critical for binding of this BabA to its Leb receptor.

Hematoxylin and eosin stains demonstrated that *H. pylori* infection was associated with a marked inflammatory infiltrate and loss of normal epithelial architecture (Fig. 5A and E) that is typical of *H. pylori*-induced gastritis in gerbils (28). To determine whether the six amino acid replacements were also sufficient to eliminate binding to tissue sections, we FITC-labeled strains 7.13, 8.31, and the 7.13 derivative that contained the 8.31 *babA2* allele. Each strain was applied to gastric tissue sections from uninfected (Fig. 5A to D) and infected (Fig. 5E to H) gerbils, and binding was assessed by quantitative analysis of fluorescence microscopy. Consistent with the results of bind-

TABLE 2. Exchange of <i>babA2</i> alleles in <i>H. pylori</i> strains 7.13 and 8.31		
<i>H. pylori</i> strain	<i>babA2</i> donor strain	Mean Leb adherence ratio $\pm$ SE <sup>a</sup>
7.13	None	3.63 $\pm$ 0.18
7.13 $\Delta babA2$	None	1.11 $\pm$ 0.03
7.13 $\Delta babA2$	8.31	1.02 $\pm$ 0.03
7.13 $\Delta babA2$	7.13	3.08 $\pm$ 0.43
8.31	None	1.19 $\pm$ 0.10

<sup>a</sup> Data are means of three replicates performed on independent colonies for wild-type strains or independent transformants for complemented strains. Non-parametric one-way analysis of variance (Kruskal-Wallis) results were significant ( $P = 0.01$ , one tailed), as were pairwise comparisons between 7.13 (or 7.13 $\Delta babA2$  complemented with 7.13 *babA2*) and each of the other strains ( $P = 0.05$ , one tailed, Mann-Whitney U test).



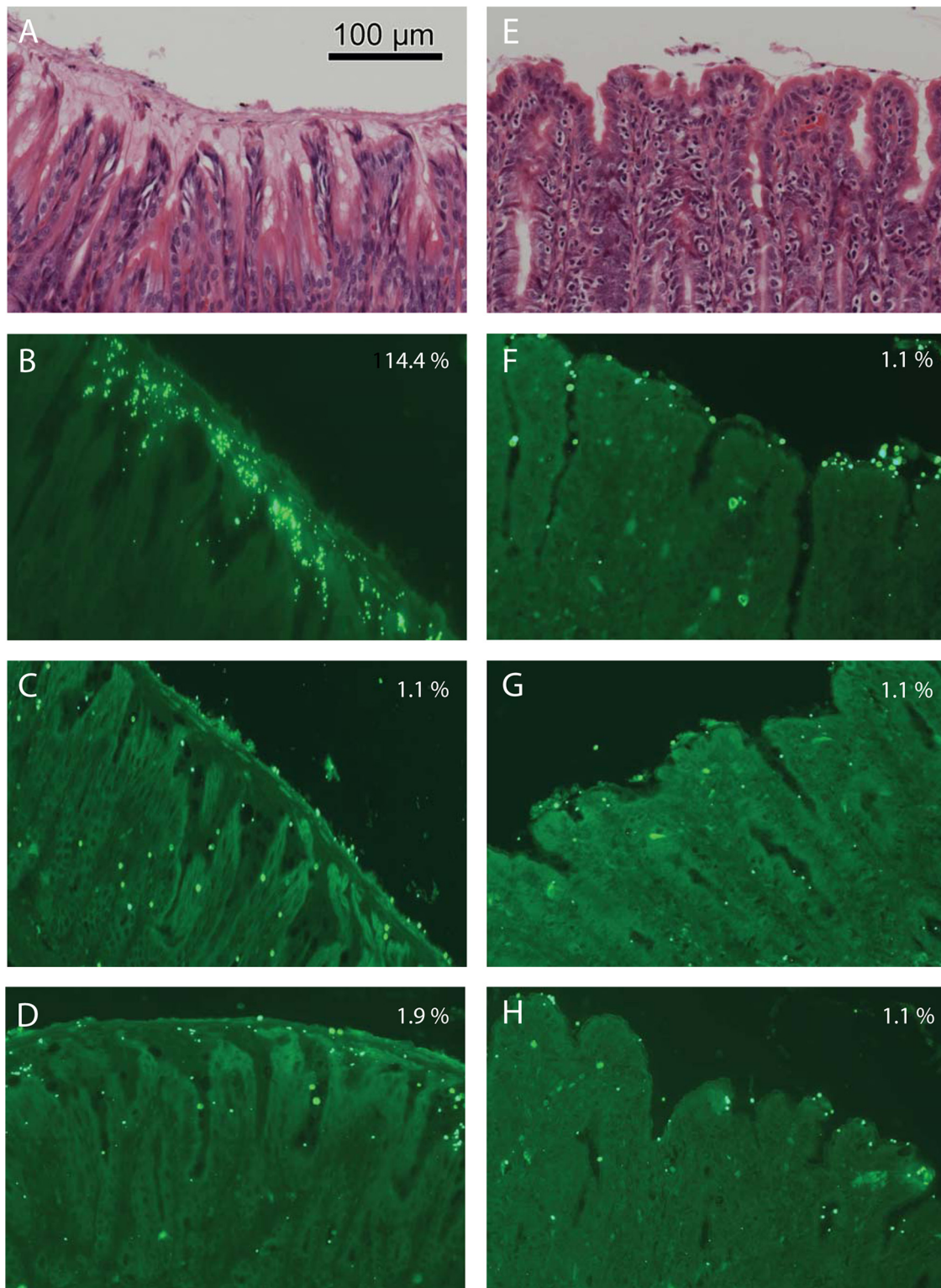


FIG. 5. Gastric histosections from gerbils that were uninfected (A to D) or infected (E to H) with *H. pylori*. Hematoxylin and eosin stained sections (A and E) demonstrate the marked cellular infiltrate and loss of normal epithelial architecture that is characteristic of *H. pylori* gastritis. Incubation of uninfected tissue sections with FITC-labeled bacteria showed that *H. pylori* 7.13, which binds Leb, also attached to gastric tissue (B), whereas strains 8.31 (C) and 7.13 expressing the 8.31 *babA* (D) did not. Interestingly, none of the strains bound appreciably to infected gerbil tissue (F to H), suggesting that *H. pylori* infection reduces expression of the BabA receptor. The percentage of epithelium with bound bacteria was determined as described in Materials and Methods and is shown in the upper right of each panel.

ing in the Leb adherence assay, *H. pylori* 7.13 showed binding to ca. 14% of the surface epithelium of uninfected gastric tissue (Fig. 5B), whereas 8.31 and 7.13 bearing the 8.31 *babA2* bound only ca. 1% (Fig. 5C and D). Little or no binding was seen to tissue from infected gerbils (Fig. 5F to H). Together, these results indicate that in *H. pylori* 7.13, six amino acid changes are sufficient to eliminate binding to Leb and to gastric tissue and that receptors recognized by BabA may be lost during infection in the gerbil model.

## DISCUSSION

Studies in different human populations in many geographic locations have demonstrated the remarkable genomic diversity of *H. pylori*. Isolates from unrelated individuals represent a seemingly unlimited number of unique strains that differ in gene content, position, and allelic profile. Diversity is thought to develop through point mutation, genomic recombination, and genetic exchange, as well as phase variation, all of which are common in *H. pylori* (13, 29, 30), coupled with random genetic drift and selection for adaptation to particular environments. Animal models of *H. pylori* infection permit experimental observation of diversity that develops *in vivo* in real time after inoculation with a clonal population. We previously used the rhesus macaque model to analyze changes in the *H. pylori* genome over time within the same animal host (33). The results demonstrated that in rhesus macaques the expression of BabA was lost, either by phase variation or by nonreciprocal gene conversion, in which a duplicate copy of *babB* replaced *babA*.

Here we have replicated the analysis of BabA expression in macaques using a different *H. pylori* strain and extended the results to the mouse and gerbil, which are commonly used small-animal models of *H. pylori*. The results demonstrated the loss of BabA expression in macaques, mice, and gerbils, although the particular mechanisms differed. After challenge of mice with *H. pylori* J166, which has 5' CT repeats in the *babA* gene, BabA expression, and Leb binding were lost by phase variation. In contrast, challenge of macaques with J99 yielded output strains that lost BabA expression either by selection and then expansion of a subpopulation of J99 that had a single base pair mutation that encoded a stop codon, or by nonreciprocal gene conversion of *babA* with a duplicate copy of *babB* as we observed previously (33). Gene conversion also explained loss of Leb binding activity in the gerbil model after colonization with strain 7.13, although in this case the *babA* gene that encoded Leb binding was converted by a nonbinding allele. This gene conversion was not present in strain 7.13, which was also recovered from a gerbil 3 weeks after challenge with strain B128 (11). This is likely explained by the short duration of infection, since loss of BabA expression is not uniform until 8 weeks of colonization (33).

Although most *H. pylori* strains recovered from humans express BabA (29, 35), strains similar to those recovered after animal challenge are sometimes seen in humans. For example, we previously examined 43 clinical isolates by PCR and DNA sequencing and showed that while most had *babA* and *babB*, in 16% of strains (7 of 43) *babA* was absent and *babB* was duplicated, like what is seen in macaques. Some strains had duplicate copies of *babA* (like strain 7.13), one of which was typically

out of frame, while others had still different *bab* genotypes, such as *babC* (HopU, HP0317), at the locus where *babA* or *babB* are typically found (7). Others have found similar diversity in *bab* genotypes and demonstrated remarkable heterogeneity in Leb binding (3). Therefore, it is likely that whatever factors select for loss of BabA expression in animal models of *H. pylori* may sometimes also be found in humans.

The particular selective pressures that modulate expression of BabA and related proteins are unknown. One possibility is that BabA (but not BabB) induces an adaptive immune response, so that BabA expression is lost while BabB is maintained. This seems unlikely because we have been unable to demonstrate antibodies to BabA or BabB in macaques (33) and because other reports have failed to demonstrate BabA or BabB as immunodominant antigens in humans (14, 18). Furthermore, in the case of the gerbil, Leb-binding BabA expression is lost, but BabA expression *per se* is not. BabA expression is not lost in short-term infection with C3H/HeJ mice (Fig. 1), which are known to have a defect in TLR4 signaling, so innate immunity might also be important. The presence of Leb may also influence BabA expression. However, since Leb serves on the one hand as a cellular receptor for BabA and on the other hand as a decoy receptor that likely plays a role in innate immunity (21), the relationship between BabA and Leb expression is likely complex. BabA metastability and heterogeneity likely contribute to *H. pylori* fitness (5) and so are tightly regulated, with BabA sometimes expressed by most cells in the population and other times archived as "memory cells" ready to expand when conditions change.

Although *H. pylori* strains differ markedly in binding affinity to Leb, no consensus amino acid sequences have been identified that are conserved among strains that bind Leb (3, 15). Since the strains recovered from gerbils did not bind Leb or gastric histosections and yet expressed BabA that differed at only six amino acids from the Leb-binding allele (Fig. 4), one or more of these six residues are likely important, either as binding sites or as key amino acids that alter the tertiary structure of BabA. The location of these residues within the midregion of BabA is consistent with this suggestion, since this portion of the protein is highly polymorphic (26, 27), is thought to be surface exposed, and is likely responsible for Leb binding. In most cases, the differences in amino acids between BabA2 and BabA1 at these positions represent a change in charge or hydrophobicity, such as E218K (negative to positive charge), K252E (positive to negative charge) and S302G (hydrophilic to hydrophobic), which might be expected to change the tertiary structure of the BabA protein.

The receptor for BabA in the gerbil is unknown, and Leb has generally been thought to be absent in rodents. However, recent studies in mice with anti-Leb antibodies, corroborated by antibody inhibition using specific synthetic saccharides, suggest that rodents may in fact express Leb or related Lewis type 1 structures (23). Loss of BabA-mediated binding to infected gerbil gastric tissue (Fig. 5) demonstrates that as *H. pylori* undergoes modification in surface adhesins during infection; so, too, does the host play an active role, probably with changes in Leb or closely related glycans expressed on the epithelial surface. This is consistent with recent studies that have demonstrated that *H. pylori* induces profound changes in surface glycoproteins, including the gastric mucins MUC5AC (8, 21)



and MUC1 (22). We hypothesize that modification of BabA during *H. pylori* infection is a mechanism to adapt to changing conditions of inflammation and glycan expression at the epithelial surface.

#### ACKNOWLEDGMENTS

Supported by Public Health Service Awards from the National Institutes of Health (NIH) to J.V.S. (AI42081 and AI070803), R.M.P. (DK58587, CA77955, and CA116087), and D.E.B. (DK63041) and by National Research Service Award from the NIH (T32 AI60555) to C.M.S. and C.L.C.

#### REFERENCES

- Alm, R. A., J. Bina, B. M. Andrews, P. Doig, R. E. Hancock, and T. J. Trust. 2000. Comparative genomics of *Helicobacter pylori*: analysis of the outer membrane protein families. *Infect. Immun.* **68**:4155–4168.
- Alm, R. A., L. L. Ling, D. T. Moir, B. L. King, E. D. Brown, P. C. Doig, D. R. Smith, B. Noonan, B. C. Guild, B. L. deJonge, G. Carmel, P. J. Tummino, A. Caruso, M. Uria-Nickelsen, D. M. Mills, C. Ives, R. Gibson, D. Merberg, S. D. Mills, Q. Jiang, D. E. Taylor, G. F. Vovis, and T. J. Trust. 1999. Genomic-sequence comparison of two unrelated isolates of the human gastric pathogen *Helicobacter pylori*. *Nature* **397**:176–180.
- Aspholm-Hurtig, M., G. Dailide, M. Lahmann, A. Kalia, D. Ilver, N. Roche, S. Vikstrom, R. Sjöstrom, S. Linden, A. Backstrom, C. Lundberg, A. Arnqvist, J. Mahdavi, U. J. Nilsson, B. Velapattino, R. H. Gilman, M. Gerhard, T. Alarcon, M. Lopez-Brea, T. Nakazawa, J. G. Fox, P. Correa, M. G. Dominguez-Bello, G. I. Perez-Perez, M. J. Blaser, S. Normark, I. Carlstedt, S. Oscarson, S. Teneberg, D. E. Berg, and T. Boren. 2004. Functional adaptation of BabA, the *H. pylori* ABO blood group antigen binding adhesin. *Science* **305**:519–522.
- Ausubel, F. M., R. Brent, R. E. Kingston, D. D. Moore, J. G. Seidman, J. A. Smith, and K. Struhl. 1990. Current protocols in molecular biology. John Wiley & Sons, Inc., New York, NY.
- Backstrom, A., C. Lundberg, D. Kersulyte, D. E. Berg, T. Boren, and A. Arnqvist. 2004. Metastability of *Helicobacter pylori* bab adhesin genes and dynamics in Lewis b antigen binding. *Proc. Natl. Acad. Sci. U. S. A.* **101**:16923–16928.
- Boren, T., P. Falk, K. A. Roth, G. Larson, and S. Normark. 1993. Attachment of *Helicobacter pylori* to human gastric epithelium mediated by blood group antigens. *Science* **262**:1892–1895.
- Colbeck, J. C., L. M. Hansen, J. M. Fong, and J. V. Solnick. 2006. Genotypic profile of the outer membrane proteins BabA and BabB in clinical isolates of *Helicobacter pylori*. *Infect. Immun.* **74**:4375–4378.
- Cooke, C. L., H. J. An, J. Kim, D. R. Canfield, J. Torres, C. B. Lebrilla, and J. V. Solnick. 2009. Modification of gastric mucin oligosaccharide expression in rhesus macaques after infection with *Helicobacter pylori*. *Gastroenterol.* **137**:1061–1071.
- Dailidiene, D., G. Dailide, D. Kersulyte, and D. E. Berg. 2006. Contraselectable streptomycin susceptibility determinant for genetic manipulation and analysis of *Helicobacter pylori*. *Appl. Environ. Microbiol.* **72**:5908–5914.
- Falk, P., K. A. Roth, T. Boren, T. U. Westblom, J. I. Gordon, and S. Normark. 1993. An *in vitro* adherence assay reveals that *Helicobacter pylori* exhibits cell lineage-specific tropism in the human gastric epithelium. *Proc. Natl. Acad. Sci. U. S. A.* **90**:2035–2039.
- Franco, A. T., E. Johnston, U. Krishna, Y. Yamaoka, D. A. Israel, T. A. Nagy, L. E. Wroblewski, M. B. Piazuelo, P. Correa, and R. M. Peek, Jr. 2008. Regulation of gastric carcinogenesis by *Helicobacter pylori* virulence factors. *Cancer Res.* **68**:379–387.
- Gerhard, M., N. Lehn, N. Neumayer, T. Borén, R. Rad, W. Schepp, S. Miehke, M. Classen, and C. Prinz. 1999. Clinical relevance of the *Helicobacter pylori* gene for blood-group antigen-binding adhesin. *Proc. Natl. Acad. Sci. U. S. A.* **96**:12778–12783.
- Gressmann, H., B. Linz, R. Ghai, K. P. Pleissner, R. Schlapbach, Y. Yamaoka, C. Kraft, S. Suerbaum, T. F. Meyer, and M. Achtman. 2005. Gain and loss of multiple genes during the evolution of *Helicobacter pylori*. *PLoS Genet.* **1**:e43.
- Haas, G., G. Karaali, K. Ebermayer, W. G. Metzger, S. Lamer, U. Zimny-Arndt, S. Diescher, U. B. Goebel, K. Vogt, A. B. Roznowski, B. J. Wiedenmann, T. F. Meyer, T. Aebischer, and P. R. Jungblut. 2002. Immunoproteomics of *Helicobacter pylori* infection and relation to gastric disease. *Proteomics* **2**:313–324.
- Hennig, E. E., R. Mernaugh, J. Edl, P. Cao, and T. L. Cover. 2004. Heterogeneity among *Helicobacter pylori* strains in expression of the outer membrane protein BabA. *Infect. Immun.* **72**:3429–3435.
- Hornsby, M., J. L. Huff, R. Kays, D. Canfield, C. Bevins, and J. Solnick. 2008. *Helicobacter pylori* induces an antimicrobial response in rhesus macaques in a Cag pathogenicity island-dependent manner. *Gastroenterology* **134**:1049–1057.
- Ilver, D., A. Arnqvist, J. Ogren, I. M. Frick, D. Kersulyte, E. T. Inceci, D. E. Berg, A. Covacci, L. Engstrand, and T. Boren. 1998. *Helicobacter pylori* adhesin binding fucosylated histo-blood group antigens revealed by retagging. *Science* **279**:373–377.
- Kimmel, B., A. Bosserhoff, R. Frank, R. Gross, W. Goebel, and D. Beier. 2000. Identification of immunodominant antigens from *Helicobacter pylori* and evaluation of their reactivities with sera from patients with different gastroduodenal pathologies. *Infect. Immun.* **68**:915–920.
- Kusters, J. G., A. H. van Vliet, and E. J. Kuipers. 2006. Pathogenesis of *Helicobacter pylori* infection. *Clin. Microbiol. Rev.* **19**:449–490.
- Lin, E. A., X. S. Zhang, S. M. Levine, S. R. Gill, D. Falush, and M. J. Blaser. 2009. Natural transformation of *Helicobacter pylori* involves the integration of short DNA fragments interrupted by gaps of variable size. *PLoS Pathog.* **5**:e1000337.
- Linden, S. K., J. Mahdavi, C. Semino-Mora, C. Olsen, I. Carlstedt, T. Boren, and A. Dubois. 2008. Glycan secretor phenotypes modulate mucosal innate immunity and affect *Helicobacter pylori* infection. *PLoS Pathog.* **4**:e2.
- Linden, S. K., Y. H. Sheng, A. L. Every, K. M. Miles, E. C. Skoog, T. H. Florin, P. Sutton, and M. A. McGuckin. 2009. MUC1 limits *Helicobacter pylori* infection both by steric hindrance and by acting as a releasable decoy. *PLoS Pathog.* **5**:e1000617.
- Magalhaes, A., J. Gomes, M. N. Ismail, S. M. Haslam, N. Mendes, H. Osorio, L. David, J. Lependu, R. Haas, A. Dell, T. Boren, and C. A. Reis. 2009. Fut2-null mice display an altered glycosylation profile and impaired BabA-mediated *Helicobacter pylori* adhesion to gastric mucosa. *Glycobiology* **16**:1793–1806.
- McClain, M. S., C. L. Shaffer, D. A. Israel, R. M. Peek, Jr., and T. L. Cover. 2009. Genome sequence analysis of *Helicobacter pylori* strains associated with gastric ulceration and gastric cancer. *BMC Genomics* **10**:3.
- Odenbreit, S., H. Kavermann, J. Puls, and R. Haas. 2002. CagA tyrosine phosphorylation and interleukin-8 induction by *Helicobacter pylori* are independent from alpAB, HopZ and bab group outer membrane proteins. *Int. J. Med. Microbiol.* **292**:257–266.
- Pride, D. T., and M. J. Blaser. 2002. Concerted evolution between duplicated genetic elements in *Helicobacter pylori*. *J. Mol. Biol.* **316**:629–642.
- Pride, D. T., R. J. Meinersmann, and M. J. Blaser. 2001. Allelic variation within *Helicobacter pylori* babA and babB. *Infect. Immun.* **69**:1160–1171.
- Rieder, G., J. L. Merchant, and R. Haas. 2005. *Helicobacter pylori* cag-type IV secretion system facilitates corpus colonization to induce precancerous conditions in Mongolian gerbils. *Gastroenterology* **128**:1229–1242.
- Salama, N., K. Guillemin, T. K. McDaniel, G. Sherlock, L. S. Tompkins, and S. Falkow. 2000. A whole-genome microarray reveals genetic diversity among *Helicobacter pylori* strains. *Proc. Natl. Acad. Sci. U. S. A.* **97**:14668–14673.
- Salaun, L., B. Linz, S. Suerbaum, and N. J. Saunders. 2004. The diversity within an expanded and redefined repertoire of phase-variable genes in *Helicobacter pylori*. *Microbiology* **150**:817–830.
- Solnick, J. V., D. R. Canfield, S. Yang, and J. Parsonnet. 1999. The rhesus monkey (*Macaca mulatta*) model of *Helicobacter pylori*: noninvasive detection and derivation of specific pathogen free monkeys. *Lab. Anim. Sci.* **49**:197–201.
- Solnick, J. V., L. M. Hansen, D. R. Canfield, and J. Parsonnet. 2001. Determination of the infectious dose of *Helicobacter pylori* during primary and secondary infection in rhesus monkeys (*Macaca mulatta*). *Infect. Immun.* **69**:6887–6892.
- Solnick, J. V., L. M. Hansen, N. Salama, J. K. Boonjakuakul, and M. Syvanen. 2004. Modification of *Helicobacter pylori* outer membrane protein expression during experimental infection of rhesus macaques. *Proc. Natl. Acad. Sci. U. S. A.* **101**:2106–2111.
- Tan, S., and D. E. Berg. 2004. Motility of urease-deficient derivatives of *Helicobacter pylori*. *J. Bacteriol.* **186**:885–888.
- Yamaoka, Y., J. Soucek, S. Odenbreit, R. Haas, A. Arnqvist, T. Boren, T. Kodama, M. S. Osato, O. Gutierrez, J. G. Kim, and D. Y. Graham. 2002. Discrimination between cases of duodenal ulcer and gastritis on the basis of putative virulence factors of *Helicobacter pylori*. *J. Clin. Microbiol.* **40**:2244–2246.