

Washington University School of Medicine

Digital Commons@Becker

Open Access Publications

2014

Distinguishing West Nile virus infection using a recombinant envelope protein with mutations in the conserved fusion-loop

Stefan Chabierski

Fraunhofer Institute for Cell Therapy and Immunology

Luisa Barzon

University of Padova

Anna Papa

Aristotle University of Thessaloniki

Matthias Niedrig

Robert Koch Institute

Jonathan L. Bramson

McMaster University

See next page for additional authors

Follow this and additional works at: https://digitalcommons.wustl.edu/open_access_pubs

Please let us know how this document benefits you.

Recommended Citation

Chabierski, Stefan; Barzon, Luisa; Papa, Anna; Niedrig, Matthias; Bramson, Jonathan L.; Richner, Justin M.; Palu, Giorgio; Diamond, Michael S.; and Ulbert, Sebastian, "Distinguishing West Nile virus infection using a recombinant envelope protein with mutations in the conserved fusion-loop." *BMC Infectious Diseases*. 14, 246. (2014).

https://digitalcommons.wustl.edu/open_access_pubs/2935

This Open Access Publication is brought to you for free and open access by Digital Commons@Becker. It has been accepted for inclusion in Open Access Publications by an authorized administrator of Digital Commons@Becker. For more information, please contact vanam@wustl.edu.

Authors

Stefan Chabierski, Luisa Barzon, Anna Papa, Matthias Niedrig, Jonathan L. Bramson, Justin M. Richner, Giorgio Palu, Michael S. Diamond, and Sebastian Ulbert

RESEARCH ARTICLE

Open Access

Distinguishing West Nile virus infection using a recombinant envelope protein with mutations in the conserved fusion-loop

Stefan Chabierski¹, Luisa Barzon², Anna Papa³, Matthias Niedrig⁴, Jonathan L Bramson⁵, Justin M Richner⁶, Giorgio Palù², Michael S Diamond⁶ and Sebastian Ulbert^{1*}

Abstract

Background: West Nile Virus (WNV) is an emerging mosquito-transmitted flavivirus that continues to spread and cause disease throughout several parts of the world, including Europe and the Americas. Specific diagnosis of WNV infections using current serological testing is complicated by the high degree of cross-reactivity between antibodies against other clinically relevant flaviviruses, including dengue, tick-borne encephalitis (TBEV), Japanese encephalitis (JEV), and yellow fever (YFV) viruses. Cross-reactivity is particularly problematic in areas where different flaviviruses co-circulate or in populations that have been immunized with vaccines against TBEV, JEV, or YFV. The majority of cross-reactive antibodies against the immunodominant flavivirus envelope (E) protein target a conserved epitope in the fusion loop at the distal end of domain II.

Methods: We tested a loss-of-function bacterially expressed recombinant WNV E protein containing mutations in the fusion loop and an adjacent loop domain as a possible diagnostic reagent. By comparing the binding of sera from humans infected with WNV or other flaviviruses to the wild type and the mutant E proteins, we analyzed the potential of this technology to specifically detect WNV antibodies.

Results: Using this system, we could reliably determine WNV infections. Antibodies from WNV-infected individuals bound equally well to the wild type and the mutant protein. In contrast, sera from persons infected with other flaviviruses showed significantly decreased binding to the mutant protein. By calculating the mean differences between antibody signals detected using the wild type and the mutant proteins, a value could be assigned for each of the flaviviruses, which distinguished their pattern of reactivity.

Conclusions: Recombinant mutant E proteins can be used to discriminate infections with WNV from those with other flaviviruses. The data have important implications for the development of improved, specific serological assays for the detection of WNV antibodies in regions where other flaviviruses co-circulate or in populations that are immunized with other flavivirus vaccines.

Keywords: West Nile virus, Diagnosis, Antibodies, Envelope protein

* Correspondence: sebastian.ulbert@izi.fraunhofer.de

¹Department of Immunology, Fraunhofer Institute for Cell Therapy and Immunology, Perlickstrasse 1, 04103 Leipzig, Germany
Full list of author information is available at the end of the article

Background

The mosquito-transmitted West Nile Virus (WNV) belongs to the *Flaviviridae* family of positive stranded RNA viruses, which also includes other arthropod-borne viruses such as dengue (DENV), tick borne encephalitis (TBEV), Japanese encephalitis (JEV), and yellow fever (YFV) viruses. WNV circulates in nature between mosquitoes and birds, but humans and other mammals also can be infected. In humans, about twenty percent of infected individuals develop flu-like symptoms, whereas in a subset of patients, primarily the elderly and immunocompromised, severe and sometimes fatal neurological complications can develop [1]. WNV was first isolated in Africa and later found to circulate in Asia, Australia, and sporadically in Europe. WNV was introduced into the United States in 1999 and rapidly spread throughout the Americas in the ensuing decade [2]. In addition, WNV has become endemic in several Southern and Eastern European countries during the past five years [3-6].

Several genetic lineages of WNV exist, and most isolates belong either to lineage 1 or lineage 2. Whereas in the Americas only WNV strains belonging to lineage 1 have been identified, in Europe strains of lineages 1 and 2 are circulating, sometimes even in the same area [7,8].

WNV infections can be diagnosed by directly detecting the viral RNA, or by measuring antibodies produced against it in serum or cerebrospinal fluid (CSF). As viremia is transient, of low magnitude, and often precedes clinical manifestations, RNA detection can be challenging. In comparison, IgM antibodies are produced approximately 4 to 7 days after infection and IgG antibodies appear a few days later [9]. Therefore, antibody-based detection systems, such as ELISAs or indirect immunofluorescence tests, are commonly used for WNV diagnosis. However, a limitation of serological diagnosis for WNV infection is the structural similarity of the immunodominant envelope (E) protein among *Flavivirus* genus members. Antibodies produced against the E protein can be cross-reactive, leading to false-positive test results [10-12]. This problem

occurs in many parts of the world due to co-circulation of different flaviviruses and historical vaccination with live attenuated or inactivated TBEV, JEV, or YFV vaccines. In Europe, cross-reactivity of antibodies against TBEV and WNV has been observed, especially in countries where TBEV vaccination is common [13]. Consequently, positive results obtained with the existing methods must be confirmed by lower-throughput virus neutralization tests, which require high-security and biosafety laboratories, which adds to the expense of the testing and delay in establishing a diagnosis [14].

Previous work has established that cross-reactive antibodies target the highly conserved fusion loop of the flavivirus E protein [15]. Moreover, binding of such cross-reactive antibodies can be diminished by inserting mutations into this epitope in the E protein or in virus-like particles (VLPs) [16-20]. Here, using bacterially expressed wild type or loss-of-function mutant WNV E proteins, we evaluated the binding of antisera derived from humans infected with different flaviviruses. This assay allowed us to determine rapidly and reliably WNV infections.

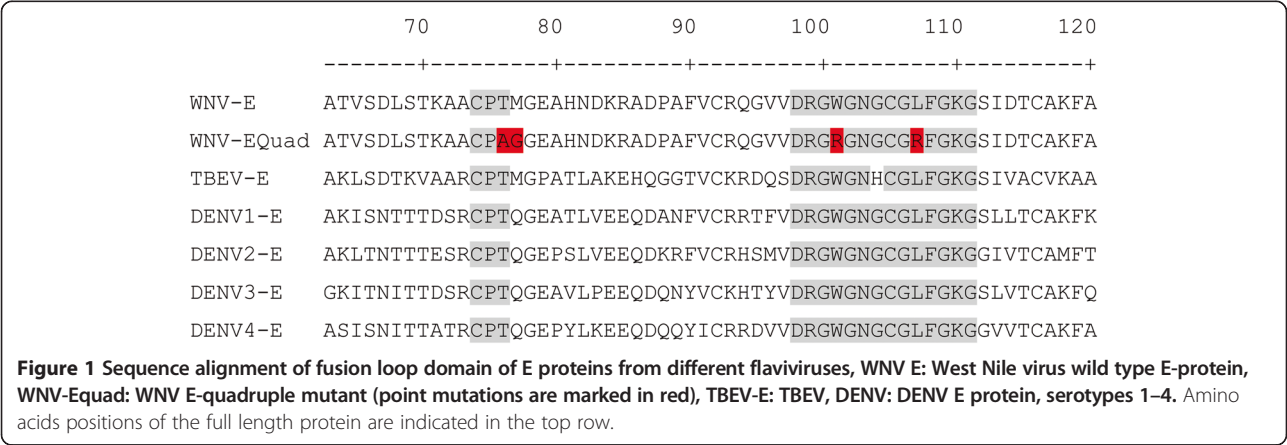
Methods

Antigens

The WNV E ectodomain (amino acid residues 1 to 404) and the quadruple mutant (T76A, M77G, W101R, L107R) of the New York 1999 strain (Acc. Nr. FJ151394) were expressed from the pET21a plasmid in *Escherichia coli*, and purified after an oxidative refolding protocol, as described previously [20,21]. The proteins were isolated as a monodispersed peak on a Superdex 75 or 200, 16/60 size-exclusion column using fast-protein liquid chromatography (GE Healthcare).

Serum samples

Serum samples from confirmed WNV-infections (described in [22]) were obtained during outbreaks in Italy and Greece in 2010. The Italian samples (University of Padova, Italy) were derived from seroprevalence studies, blood donors



or patients with West Nile neuroinvasive disease. Ethical approval was obtained from the Padova University Hospital ethics committee. The Greek samples (University of Thessaloniki, Greece) were obtained from patients with neuroinvasive disease, taken during the acute phase of illness (3–17 days). WNV infections were confirmed by virus neutralization tests. Ethical approval was obtained from the Medical School of Aristotle University of Thessaloniki ethics committee. Two WNV-positive samples were obtained from Seracare Life Sciences (USA). Serum samples from Canada were obtained from patients with confirmed WNV-specific T-cell responses [21]. The study was approved by the Hamilton Health Sciences/McMaster Health Sciences research ethics board. None of the patients was vaccinated against other flaviviruses or had a recent travel history to other countries endemic for WNV. Serum samples from JEV-vaccinated individuals participating in a randomized controlled vaccination study (approved by the national ethics committee) were obtained from the Robert-Koch Institute (Berlin, Germany). Sera from confirmed TBEV and DENV-infected individuals and negative controls were obtained from Padova University Hospital (Italy). All confirmed DENV cases were international travellers returning from endemic countries with diagnosis of recent primary DENV infection and with laboratory tests positive for IgM/IgG or IgG against only DENV. Confirmed TBEV IgG-positive serum samples were selected from a seroprevalence study in forest rangers. The TBEV IgG-positive samples were from

subjects vaccinated against TBEV or with a history of confirmed TBEV infection. The neutralizing titer for WNV was negative in all of these cases (data not shown). Ethical approval was obtained from the Padova University Hospital ethics committee.

All persons participating in this research provided informed consent and all samples were analyzed anonymously.

Antibodies against DENV were detected by using DENV IgG and IgM capture DxSelect (Focus Diagnostics, Cypress, CA, USA). Antibodies against TBEV were tested by using anti-TBE Virus IgG, IgM Enzygnost® ELISA (Siemens Healthcare, Germany).

Antibody measurements

Nunc polysorb plates (Thermo Scientific, Germany) were coated overnight with indicated amounts of recombinant E ectodomain protein or E-quadruple mutant (in coating buffer (15 mM Na₂CO₃, 35 mM NaHCO₃ pH 9.6)) per well with gentle agitation at 4°C. The plates were washed three times with 350 µL per well of PBS/Tween (0.05%), followed by blocking with 5% non-fat dry milk powder (200 µL per well) for 2 h at room temperature (RT). After a second wash step, human sera (dilution 1:100 in 5% non-fat dry milk powder, 100 µL per well) were incubated for 1.5 h at RT. The sera were removed by a third wash step and 100 µL of the secondary antibody (1:10,000 diluted HRP-conjugated Goat-anti-Human IgG (Fisher Scientific)) was added for 1 h at RT. After washing, the

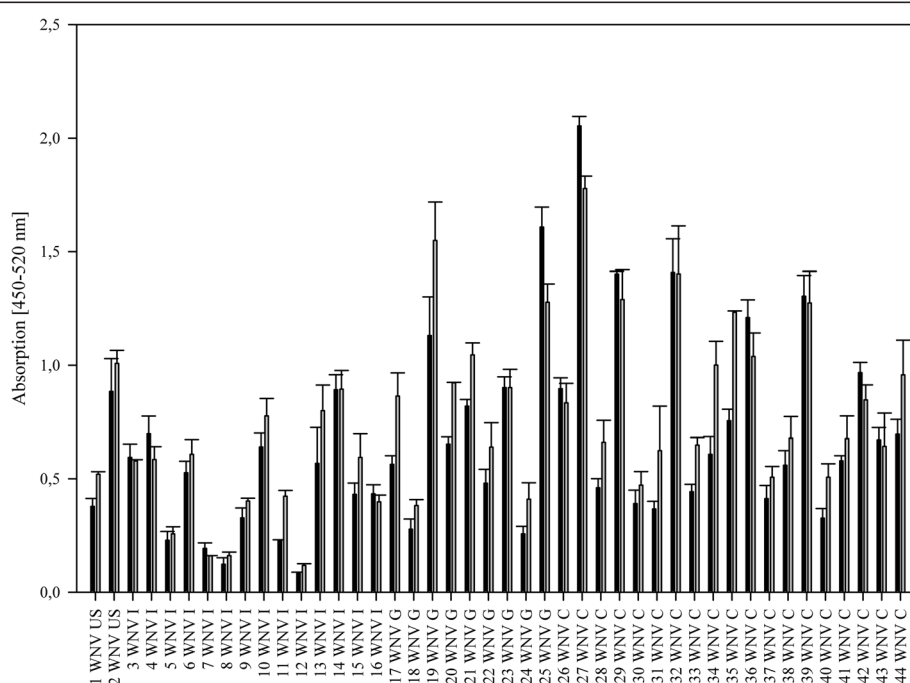


Figure 2 Analyses of WNV infected human sera on 50 ng per well of the microtiter plate of E wild type (grey columns) compared to the mutant Equad (black columns), sera from different areas, as indicated next to the numbers (G: Greece, I: Italy, C: Canada, US: USA).

TMB-substrate (BioLegend, Germany) was added to the wells and the plate was incubated for 30 min at RT in darkness. To stop the reaction, 1 M H₂SO₄ was added, followed by measurement at 450 nm and 520 nm (reference wavelength) in an ELISA Reader (Infinite M200, Tecan). All antibody tests were performed in duplicates in at least two independent experiments.

Equal loading of wild type and mutant E protein was verified using the humanized E16 monoclonal antibody (dilution 1:1000), which targets an epitope on domain III of the E protein, distant from the fusion loop [23] (data not shown).

Statistical analysis

Statistical analysis was performed using Mann–Whitney Rank Sum Test in SigmaStat.

Results and discussion

To analyze the influence of the E protein fusion loop on the specificity of flavivirus IgG antibody binding to the

E protein, we used a bacterially expressed wild type E-protein and a loss-of-function mutant (Equad), which contains four mutations within and proximal to the fusion loop [20] (Figure 1). Both proteins were incubated with sera from humans infected with WNV from outbreaks in Europe and America. Although the overall signal strength varied substantially between individuals, all samples showed clearly detectable signals that did not differ markedly between the wild type and the mutant E-proteins (Figure 2). Binding was similar in sera from patients infected with WNV strains belonging to genetic lineage 1 or lineage 2 [24], as demonstrated by signals obtained with sera from the United States, Canada or Italy (lineage 1) and Greece (lineage 2). Next, the assay was evaluated for its specificity by testing sera from humans containing antibodies against the heterologous flaviviruses, TBEV and DENV. In contrast to the WNV-positive samples, we observed statistically significant differences in binding between the wild-type and quadruple mutant E proteins (Figure 3). Most samples showed the expected

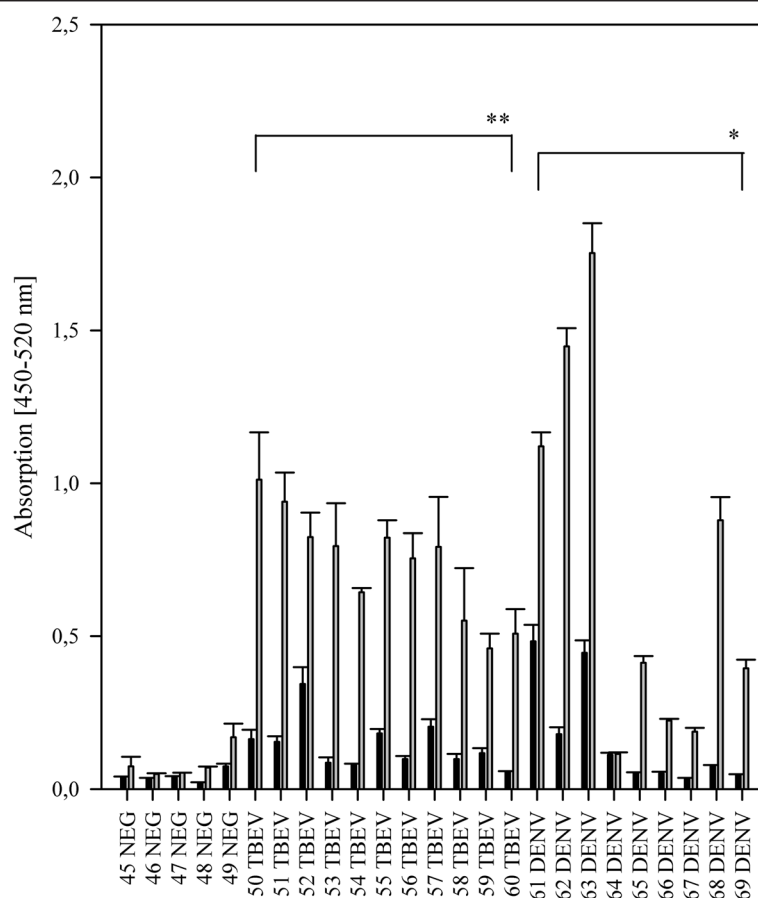


Figure 3 Comparison of IgG binding to 50 ng per well of wild type E (grey columns) and Equad (black columns) using negative (NEG), TBEV- or DENV- positive sera. Asterisks indicate statistically significant differences between wild type and mutant WNV-Envelope protein (TBEV: **, $P = <0.001$; DENV: *, $P = 0.010$; Mann–Whitney Rank Sum Test).

strong cross-reactivity, with high binding to wild type WNV E; however, the values for binding of the heterologous sera to the fusion loop mutant were substantially lower. Although some DENV-infected sera showed binding to the mutant WNV E protein, the values obtained with the wild type E protein were all significantly higher.

To assess the relative amount of antibody against wild type and mutant E proteins, sera from WNV-, TBEV- or DENV-infected individuals were incubated with increasing amounts of the two protein antigens in the solid phase.

For the WNV-positive sera, the signal for binding the Equad mutant saturated at ~200 ng per well (Figure 4). In contrast, saturation was not observed with the wild type protein until 300 ng of protein was added. This possibly reflects the limiting amount of WNV-specific antibodies that target other non-fusion loop epitopes. Increasing the antigen amount from 50 ng to 100 ng resulted in enhanced detection of sera, especially for those showing moderate binding at the lower amounts, as exemplified by WNV serum 7 (see Figure 2), but increased the

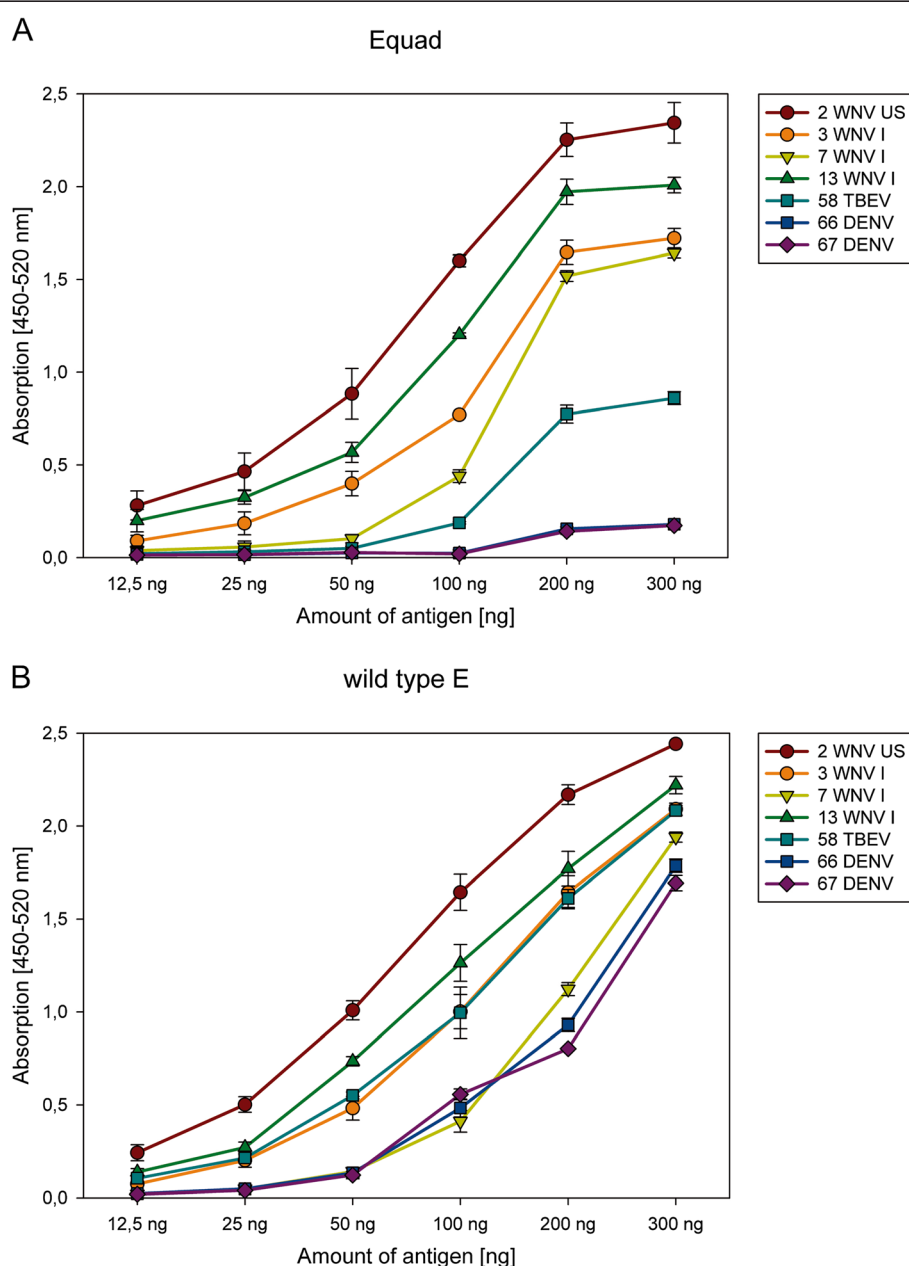


Figure 4 Antigen titration of Equad (A) and E wild type (B). Different sera were incubated with an increasing amount of recombinant proteins per well of the microtiter plate. Differences between individual sera at 300 ng of antigen were not statistically significant.

background binding of some samples (data not shown). Serum dilution assays confirmed the marked differences in titers against the mutant and the wild type E protein shown by the DENV- and TBEV positive sera (Figure 5).

By calculating the average ratios between the signal for the wild-type and mutant protein in Figures 1 and 2, a value could be assigned for each of the flaviviruses, which distinguished their pattern of reactivity. For WNV, the average ratio was 1.22 (standard deviation (SD) of 0.2), for DENV 5.92 (SD of 3.1) and for TBEV 6.06 (SD of 2.1), with a statistically significant difference between WNV

and the other two infections ($P = 0.005$, Mann–Whitney Rank Sum Test).

To analyze the suitability of this system to discriminate between infections with different flaviviruses of the JEV-serocomplex, we analyzed sera from individuals vaccinated against JEV. Due to the low antibody titres in these sera 100 ng of antigen per well were required. Similar to the DENV and TBEV infections, in all samples there was decreased binding to the Equad antigen compared to the wild-type E protein (Figure 6). However, under the conditions used, the differences were less pronounced and not

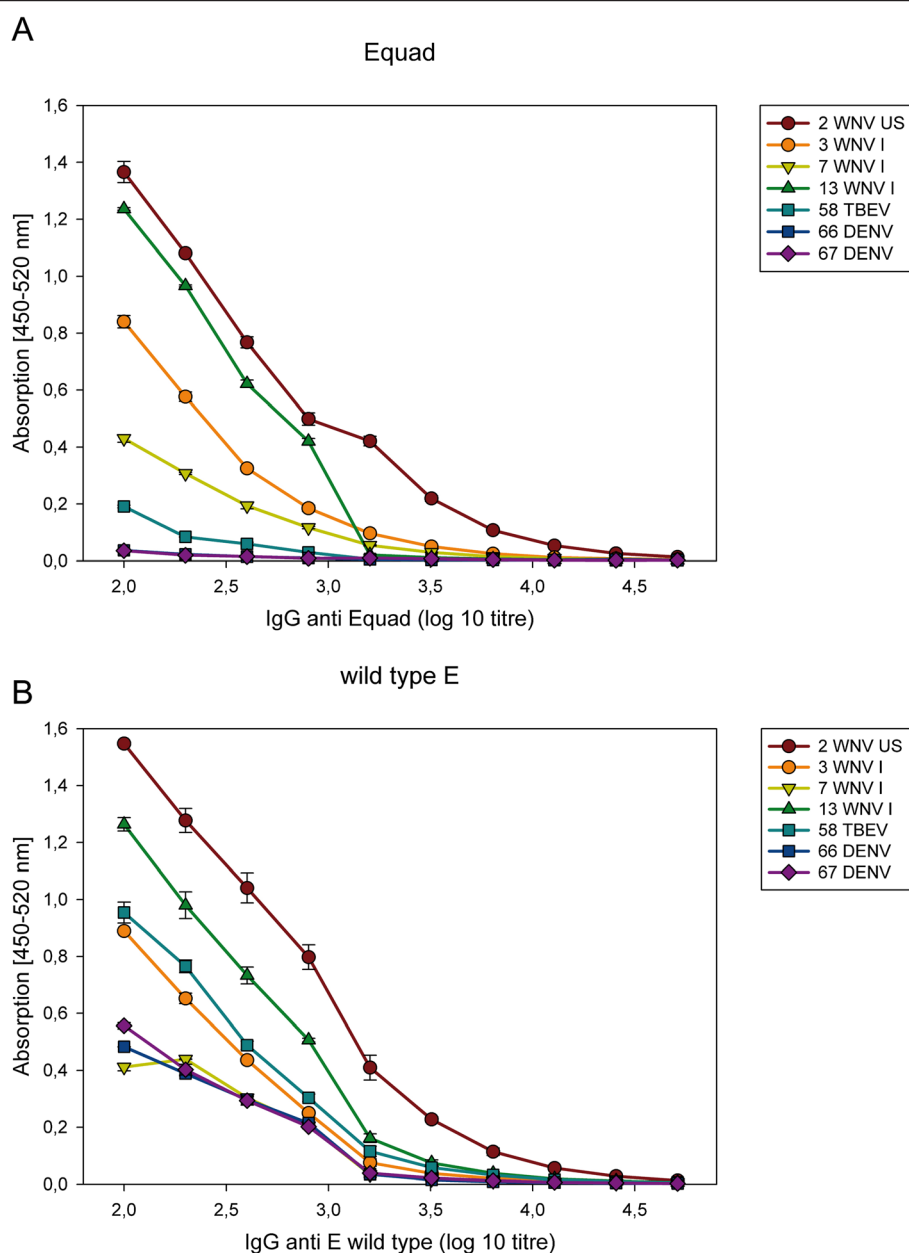


Figure 5 Sera dilution curves using constant antigen amounts (100 ng) of the Equad mutant (A) and wild type E protein (B).

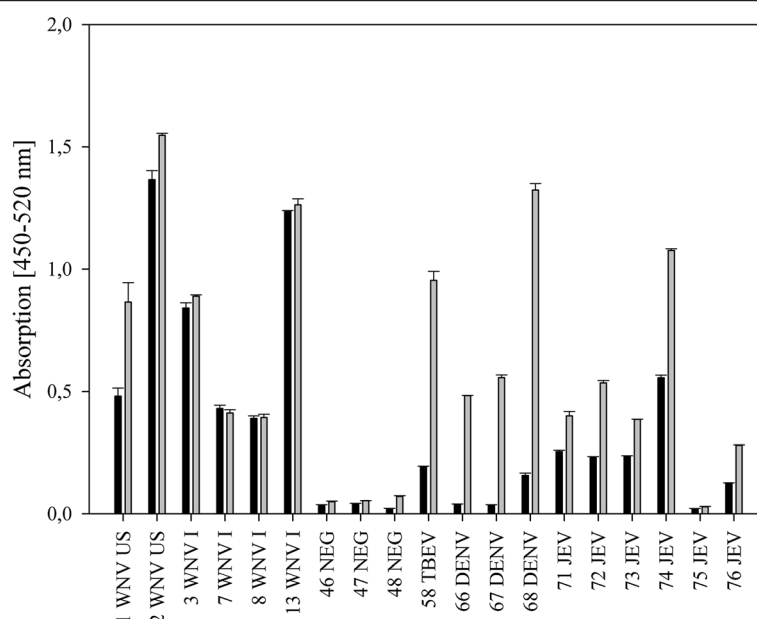


Figure 6 Comparison of IgG binding to wild type E (grey columns) and Equad (black columns) using negative (NEG), WNV-, TBEV-, DENV- and JEV-positive sera.

statistically significant when compared to the WNV samples, a finding which is not unexpected given the higher amino acid sequence identity (approx. 80%) of the WNV E-protein to JEV as compared to TBEV or DENV (approx. 40% and 50%, respectively). This indicates that the principle of discrimination also applies to JEV, but the definition of average ratios will require more refinement for WNV-related viruses from the same JEV serocomplex.

In summary, we present a new assay for the serologic diagnosis of WNV infections, which is based on the relative difference in antibody binding to mutant and wild type E protein of WNV. The data suggest that defined values could be established that allow the differentiation of flavivirus infections. The observation that antibody binding to the E protein varied substantially among WNV-infected individuals is consistent with previous observations describing the heterogeneity of the human humoral immune response to WNV infections [22,25]. However, for WNV, there were no significant differences observed between the binding towards wild type and mutant E protein, unless the antigens were present at high density. Because the human antibody response against WNV is skewed towards non-neutralizing epitopes including the fusion loop [21,26], some difference in binding was expected. However, DENV- and TBEV- positive sera show a more pronounced difference in the binding to wild type and mutant E protein, which reflects the immunodominance of the fusion-loop epitope as a cross-reactive determinant [18,27-29]. Although diminished binding of cross-reactive DENV-infected sera using a similar Equad protein has been shown previously [20], sera from WNV- and TBEV

infected patients were not analyzed in that study. The quadruple mutant contains four mutations adjacent to and within the fusion loop of the protein, which impact the binding of cross-reactive flavivirus antibodies. Using a VLP-based system, Roberson et al. [19] analyzed a double-mutant (G106R and L107H) in the fusion loop of the E protein for WNV diagnosis. Our approach differs in number and positions of the mutations and in the antigen platform. A recombinant bacteria-derived protein has the advantage over mammalian cell-culture derived VLPs as it can be produced rapidly, inexpensively, and in higher yield, and likely can be quantified more precisely for diagnostic applications. Therefore, our results may be useful for the development of a specific rapid diagnostic test for the detection of WNV IgG and possibly, IgM antibodies. IgM detection would be particularly useful for the investigation of recent infections. Alternatively, a recent infection can also be diagnosed by measuring a rise in IgG antibody titers over time [11].

Conclusions

By using a recombinant loss-of-function mutant of the WNV E-protein, infections with WNV can be discriminated from those with TBEV and DENV based on antibody measurements. Whereas under the conditions used no substantive difference in binding of WNV antibodies to the wild type or mutant E protein was observed, anti-TBEV or -DENV antibodies bound significantly less well to the mutant protein lacking the cross-reactive fusion loop epitope.

Competing interests

The authors declare that they have no competing interest.

Authors' contributions

SC and JMR carried out the immunoassays and produced the recombinant antigens. SU, SC and MSD conceived and designed the experiments and wrote the paper. LB, MN, AP, JLB and GP contributed reagents/materials/analysis tools and added important intellectual input into study design and writing of the manuscript. All authors read and approved the final manuscript.

Acknowledgements

We thank Steffen Jakob for excellent technical assistance. This work was supported by the European Commission under FP7, project number 261426 (WINGS; Epidemiology, Diagnosis and Prevention of West Nile Virus in Europe).

Author details

¹Department of Immunology, Fraunhofer Institute for Cell Therapy and Immunology, Perlickstrasse 1, 04103 Leipzig, Germany. ²Department of Molecular Medicine, University of Padova, via Gabelli 63, 35121 Padova, Italy. ³Department of Microbiology, Medical School, Aristotle University of Thessaloniki, 54124 Thessaloniki, Greece. ⁴Robert Koch Institute, 13353 Berlin, Germany. ⁵McMaster Immunology Research Centre, McMaster University, Hamilton, Ontario L8N 3Z5, Canada. ⁶Departments of Medicine, Molecular Microbiology, Pathology & Immunology, Washington University School of Medicine, 63110 St Louis, MO, USA.

Received: 17 December 2013 Accepted: 6 May 2014

Published: 9 May 2014

References

- Hayes EB, Sejvar JJ, Zaki SR, Lanciotti RS, Bode AV, Campbell GL: **Virology, pathology, and clinical manifestations of West Nile virus disease.** *Emerg Infect Dis* 2005, **11**:1174–1179.
- Murray KO, Mertens E, Despres P: **West Nile virus and its emergence in the United States of America.** *Vet Res* 2010, **4**:67.
- Barzon L, Pacenti M, Franchin E, Lavezzo E, Martello T, Toppo S, Fiorin F, Marchiori G, Russo F, Cattai M, Cusinato R, Palu G: **New endemic West Nile virus lineage 1a in northern Italy, July 2012.** *Euro Surveill* 2012, **17**:e2023117.
- Sirbu A, Ceianu CS, Panculescu-Gatej RI, Vazquez A, Tenorio A, Rebreanu R, Niedrig M, Nicolescu G, Pistol A: **Outbreak of West Nile virus infection in humans, Romania, July to October 2010.** *Euro Surveill* 2011, **16**:e19762.
- Sambri V, Capobianchi M, Charrel R, Fyodorova M, Gaibani P, Gould E, Niedrig M, Papa A, Pierro A, Rossini G, Varani S, Vocale C, Landini MP: **West Nile virus in Europe: emergence, epidemiology, diagnosis, treatment, and prevention.** *Clin Microbiol Infect* 2013, **8**:699–704.
- Papa A: **West Nile virus infections in Greece: an update.** *Expert Rev Anti Infect Ther* 2012, **10**:743–750.
- Magurano F, Remoli ME, Baggieri M, Fortuna C, Marchi A, Fiorentini C, Bucci P, Benedetti E, Ciufolini MG, Rizzo C, Piga S, Salcuni P, Rezza G, Nicoletti L: **Circulation of West Nile virus lineage 1 and 2 during an outbreak in Italy.** *Clin Microbiol Infect* 2012, **18**:E545–547.
- Barzon L, Pacenti M, Franchin E, Squarzon L, Lavezzo E, Cattai M, Cusinato R, Palu G: **The complex epidemiological scenario of West Nile virus in Italy.** *Int J Environ Res Public Health*. 2013, **10**:4669–4689.
- Diamond MS, Mehlhop E, Oliphant T, Samuel MA: **The host immunologic response to West Nile encephalitis virus.** *Front Biosci* 2009, **14**:3024–3034.
- Papa A, Karabaxoglou D, Kansouzidou A: **Acute West Nile virus neuroinvasive infections: cross-reactivity with dengue virus and tick-borne encephalitis virus.** *J Med Virol* 2011, **83**:1861–1865.
- Sambri V, Capobianchi MR, Cavrini F, Charrel R, Donoso-Mantke O, Escadafal C, Franco L, Gaibani P, Gould EA, Niedrig M, Papa A, Pierro A, Rossini G, Sanchini A, Tenorio A, Varani S, Vázquez A, Vocale C, Zeller H: **Diagnosis of west nile virus human infections: overview and proposal of diagnostic protocols considering the results of external quality assessment studies.** *Viruses* 2013, **5**:2329–2348.
- Sanchini A, Donoso-Mantke O, Papa A, Sambri V, Teichmann A, Niedrig M: **Second international diagnostic accuracy study for the serological detection of West Nile virus infection.** *PLoS Negl Trop Dis* 2013, **7**:e2184.

- Donoso-Mantke O, Karan LS, Ruzek D: **Tick-Borne Encephalitis Virus: A General Overview.** In *Flavivirus Encephalitis*. Edited by Ruzek D. Rijeka: InTech Europe; 2011:133–156.
- Maeda A, Maeda J: **Review of diagnostic plaque reduction neutralization tests for flavivirus infection.** *Vet J* 2013, **1**:33–40.
- Crill WD, Chang GJ: **Localization and characterization of flavivirus envelope glycoprotein cross-reactive epitopes.** *J Virol*. 2004, **78**:13975–13986.
- Diamond MS, Pierson TC, Fremont DH: **The structural immunology of antibody protection against West Nile virus.** *Immunol Rev* 2008, **225**:212–225.
- Chiou SS, Crill WD, Chen LK, Chang GJ: **Enzyme-linked immunosorbent assays using novel Japanese encephalitis virus antigen improve the accuracy of clinical diagnosis of flavivirus infections.** *Clin Vaccine Immunol* 2008, **15**:825–835.
- Crill WD, Trainor NB, Chang GJ: **A detailed mutagenesis study of flavivirus cross-reactive epitopes using West Nile virus-like particles.** *J Gen Virol* 2007, **88**:1169–74.
- Roberson JA, Crill WD, Chang GJ: **Differentiation of West Nile and St. Louis encephalitis virus infections by use of noninfectious virus-like particles with reduced cross-reactivity.** *J Clin Microbiol* 2007, **10**:3167–74.
- Vogt MR, Dowd KA, Engle M, Tesh RB, Johnson S, Pierson TC, Diamond MS: **Poorly neutralizing cross-reactive antibodies against the fusion loop of West Nile virus envelope protein protect in vivo via Fcγ receptor and complement-dependent effector mechanisms.** *J Virol* 2011, **85**:11567–11580.
- Oliphant T, Nybakken GE, Austin SK, Xu Q, Bramson J, Loeb M, Throsby M, Fremont DH, Pierson TC, Diamond MS: **Induction of epitope-specific neutralizing antibodies against West Nile virus.** *J Virol* 2007, **81**:11828–11839.
- Chabierski S, Makert GR, Kerzhner A, Barzon L, Fiebig P, Liebert UG, Papa A, Richner JM, Niedrig M, Diamond MS, Palu G, Ulbert S: **Antibody responses in humans infected with newly emerging strains of West Nile virus in Europe.** *PlosOne* 2013, **8**:e66507.
- Nybakken GE, Oliphant T, Johnson S, Burke S, Diamond MS, Fremont DH: **Structural basis of West Nile virus neutralization by a therapeutic antibody.** *Nature* 2005, **437**:764–769.
- Lanciotti RS, Ebel GD, Deubel V, Kerst AJ, Murri S, Meyer R, Bowen M, McKinney N, Morrill WE, Crabtree MB, Kramer LD, Roehrig JT: **Complete genome sequences and phylogenetic analysis of West Nile virus strains isolated from the United States, Europe, and the Middle East.** *Virology* 2002, **298**:96–105.
- Faggioni G, Pomponi A, De Santis R, Masuelli L, Ciannamaroni A, Monaco F, Di Gennaro A, Marzocchella L, Sambri V, Lelli R, Rezza G, Bei R, Lista F: **West Nile alternative open reading frame (N-NS4B/WARF4) is produced in infected West Nile Virus (WNV) cells and induces humoral response in WNV infected individuals.** *Virol J* 2013, **22**:283.
- Throsby M, Geuijen C, Goudsmit J, Bakker AQ, Korimbocus J, Kramer RA, Clijsters van der Horst M, de Jong M, Jongeneelen M, Thijsse S, Smit R, Visser TJ, Bijl N, Marissen WE, Loeb M, Kelvin DJ, Preiser W, ter Meulen J, de Kruif J: **Isolation and characterization of human monoclonal antibodies from individuals infected with West Nile Virus.** *J Virol* 2006, **80**:6982–6992.
- Smith SA, de Alwis AR, Kose N, Harris E, Ibarra KD, Kahle KM, Pfaff JM, Xiang X, Doranz BJ, de Silva AM, Austin SK, Sukupolvi-Petty S, Diamond MS, Crowe JE Jr: **The potent and broadly neutralizing human dengue virus-specific monoclonal antibody 1C19 reveals a unique cross-reactive epitope on the bc loop of domain II of the envelope protein.** *MBio* 2013, **4**:e00873–13.
- Tsai WY, Lai CY, Wu YC, Lin HE, Edwards C, Jumnainsong A, Kliks S, Halstead S, Mongkolsapaya J, Screaton GR, Wang WK: **High-avidity and potentially neutralizing cross-reactive human monoclonal antibodies derived from secondary dengue virus infection.** *J Virol* 2013, **87**:12562–12575.
- Beltramello M, Williams KL, Simmons CP, Macagno A, Simonelli L, Quyen NT, Sukupolvi-Petty S, Navarro-Sanchez E, Young PR, de Silva AM, Rey FA, Varani L, Whitehead SS, Diamond MS, Harris E, Lanzavecchia A, Sallusto F: **The human immune response to Dengue virus is dominated by highly cross-reactive antibodies endowed with neutralizing and enhancing activity.** *Cell Host Microbe* 2010, **8**:271–283.

doi:10.1186/1471-2334-14-246

Cite this article as: Chabierski et al.: Distinguishing West Nile virus infection using a recombinant envelope protein with mutations in the conserved fusion-loop. *BMC Infectious Diseases* 2014 **14**:246.