

Washington University School of Medicine

Digital Commons@Becker

---

Open Access Publications

---

2006

## Chemokine signaling regulates apoptosis as well as immune cell traffic in host defense

Mitchell H. Grayson

*Washington University School of Medicine in St. Louis*

Michael J. Holtzman

*Washington University School of Medicine in St. Louis*

Follow this and additional works at: [https://digitalcommons.wustl.edu/open\\_access\\_pubs](https://digitalcommons.wustl.edu/open_access_pubs)

Please let us know how this document benefits you.

---

### Recommended Citation

Grayson, Mitchell H. and Holtzman, Michael J., "Chemokine signaling regulates apoptosis as well as immune cell traffic in host defense." *Cell Cycle*. 5, 4. 380-383. (2006).

[https://digitalcommons.wustl.edu/open\\_access\\_pubs/3040](https://digitalcommons.wustl.edu/open_access_pubs/3040)

This Open Access Publication is brought to you for free and open access by Digital Commons@Becker. It has been accepted for inclusion in Open Access Publications by an authorized administrator of Digital Commons@Becker. For more information, please contact [vanam@wustl.edu](mailto:vanam@wustl.edu).

## Perspective

# Chemokine Signaling Regulates Apoptosis as well as Immune Cell Traffic in Host Defense

**Mitchell H. Grayson**

**Michael J. Holtzman\***

Department of Medicine and Department of Cell Biology; Washington University School of Medicine; St. Louis, Missouri USA

\*Correspondence to: M.J. Holtzman; Washington University School of Medicine; Campus Box 8052; 660 South Euclid Avenue; St. Louis, Missouri 63110 USA; Tel.: 314.362.8970; Fax: 314.362.8987; Email: holtzman@im.wustl.edu

Received 12/16/05; Accepted 12/19/05

Previously published online as a Cell Cycle E-publication:

<http://www.landesbioscience.com/journals/cc/abstract.php?id=2427>

## KEY WORDS

CCL5, CCR5, PI3K, ERK, AKT, epithelial cell, macrophage, respiratory viruses

## ACKNOWLEDGEMENTS

This research is supported by grants from the National Institutes of Health (Heart, Lung, and Blood Institute), Martin Schaeffer Fund, and Alan A. and Edith L. Wolff Charitable Trust.

## ABSTRACT

In the struggle for optimal host defense against infection with viruses, two major events are critical: death of the infected host cell and proper immune cell activation at the site of infection. Here we summarize our recent work indicating that chemokines exhibit a distinct capacity to regulate both of these events. We put particular emphasis on a recently completed study indicating that chemokine CCL5 may prevent cell death and thereby preserve innate immune cell function in the setting of viral infection. In addition, we introduce new work to support the more traditional role of CCL5 in mediating adaptive immune cell traffic and activation in this same setting.

## INTRODUCTION

Programmed cell death is well-studied as a key regulatory event in developmental biology and cancer pathogenesis, but the same process may also be critical in defense against viral infection. In particular, viruses require host cell survival for initial replication. In some cases, the viruses also require the subsequent apoptotic death of the host cell to achieve the release of viral progeny and spread to neighboring cells. Thus, apoptosis may be protective in the early stages of infection by depriving the virus of its home but may instead favor viral spread in the later stages of infection. In the struggle between intracellular pathogen and host, it is therefore likely that the virus and the host aim to favorably influence this balance between life and death of the infected cell. From the standpoint of the host, this issue is often focused on the capacity of the adaptive immune system to target and kill the infected cells. In particular, the development, activation, and delivery of virus-specific cytotoxic T cells appears as a well-studied mechanism for clearance of viral infection. By contrast, the earlier events that govern the cellular decision for survival versus apoptotic death of the infected host cell still need to be fully defined. This aspect of host defense and its role in innate immunity forms much of the basis for the current studies. In the course of addressing this issue, we came to recognize a role for virus-inducible chemokines and consequent chemokine receptor signaling to regulate cell death during the antiviral response.

## REGULATION OF APOPTOSIS

To address the issue of virus-induced cell death, we focused on the case of common respiratory viral infections. For these types of infections, the site of initial viral replication is often the airway epithelium. This pattern is especially typical of the most common cause of serious respiratory infection in childhood, i.e., respiratory syncytial virus (RSV) as well as other common paramyxoviruses. For these viruses (and others), the initial immune cell response is relatively nonspecific and is conducted by cells of the innate immune system. Natural killer cells and neutrophils are rapidly attracted to the infected tissue and activated at the site of viral replication. However, this response is not likely enough to fully clear the infection. Thus, while this innate immune response is developing, there is simultaneous development of an adaptive immune response. This response is initiated by maturation and migration of dendritic cells to the draining lymph nodes. Once in the nodal tissue, the dendritic cells instruct rare virus-specific CD4 and CD8 T cells to proliferate and activate. Ultimately, the CD8 T cells will migrate back to the lung and directly kill the infected host cells. The virus-specific CD4 T cells will in turn direct B cells to make neutralizing antibody that will eventually lead to resolution of the viral infection.

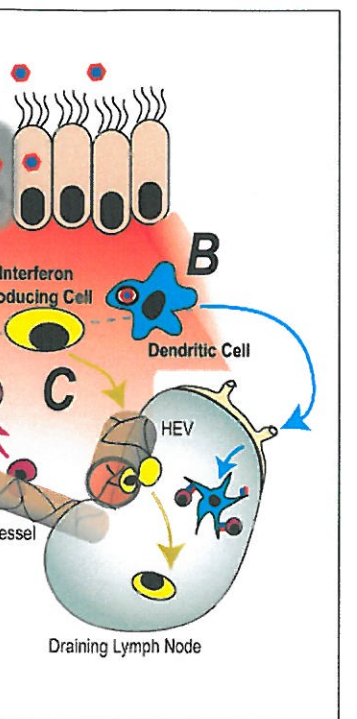
The diagram shows a cross-section of a blood vessel on the left, with red blood cells (red dots) and white blood cells (white ovals) passing through. A large, irregularly shaped cell labeled 'HEV' (Hematopoietic Endothelial Cell) is shown on the right. A blue star-shaped cell labeled 'Dendritic Cell' (B) is shown interacting with the HEV. A yellow oval labeled 'Interferon-producing Cell' (C) is shown near the blood vessel. Arrows indicate the movement of these cells and the release of interferon (red dots) from the Interferon-producing Cell towards the HEV and Dendritic Cell.

axis during a paramyxoviral infection. Macrophages attracted to the inflamed lung and die as corpses (right arrow). In the absence of CCL5, macrophages are recruited to the organ but die by apoptosis (left arrow). This process depends upon the presence of CCL5 in the lymph nodes. T cells mature and migrate to the draining lymph node, a process that may depend in part on CCL5. T cells migrate to the draining lymph nodes via the endothelial migration across the high endothelium. T cells are recruited into the lung by CCL5 during the immune response to the viral infection.

Immune cells (especially macrophages) are recruited to the site of infection.<sup>5</sup> However, lymphocyte recruitment is no different in *Ccl5<sup>-/-</sup>* and *Ccr5<sup>-/-</sup>*.

control mice. Moreover, T cell activation was assessed by flow cytometry of spleen, lung, and BAL fluid of *Ccl5*<sup>-/-</sup> mice. Loss of CCL5-CCR5 interaction was observed in macrophages in the airway tissue. This suggests that this macrophage population was not recruited and was undergoing apoptosis at the site of infection in *Ccr5*<sup>-/-</sup> mice compared to wild-type mice. The altered phenotype for CCL5 deficiency observed in other experimental models for chemokine deficiency (e.g., CCR5 deficiency models, chemokine deficiency is associated with decreased survival (Fig. 1) and decreased increase) in immune cells at the site of infection (Fig. 2) might also have been compatible with the observed loss of chemotactic signal, reduced macrophage infection and death rates. The observed phenotype in *Ccl5*<sup>-/-</sup> mice was better explained by the loss of CCR5-CCR5 interaction was necessary to

Under these conditions, endogenous



axis during a paramyxoviral infection. Macrophages attracted to the inflamed lung and engulfed corpses (right arrow). In the absence of CCL5, macrophages did not migrate back to the organ but die by apoptosis (left arrow). This process depends upon the presence of CCL5 in the lung as macrophages mature and migrate to the draining lymph nodes via the lymphatics—a process that may depend in part on CCL5—before they can migrate to the draining lymph nodes via the lymphatics. Endothelial migration across the high endothelium. Macrophages are recruited into the lung by CCL5 during the immune response to the viral infection.

immune cells (especially macrophages) of infection.<sup>5</sup> However, lymphocyte counts were not different in *Ccl5*<sup>-/-</sup> and *Ccr5*<sup>-/-</sup> control mice. Moreover, T cell activation was assessed by flow cytometry of spleen, lung, and BAL fluid of *Ccl5*<sup>-/-</sup> mice. Loss of CCL5-CCR5 interaction was not observed in macrophages in the airway tissue. Thus, this macrophage population was not depleted and was undergoing apoptosis at a similar rate in *Ccr5*<sup>-/-</sup> mice compared to wild-type

ved phenotype for CCL5 deficiency in other experimental models for models, chemokine deficiency is associated (decrease) in immune cells at the site of infection. This might also have been compatible with the phenotype due to loss of chemotactic signal, but the effect of macrophage infection and death rates. The phenotype in *Ccl5*<sup>-/-</sup> mice was better explained by the loss of CCR5 interaction was necessary to maintain the phenotype in isolated macrophages, where the phenotype was not observed. Under these conditions, endogenous



CCL5 or exogenous restoration of physiologic levels of CCL5 was each protective against virus-induced apoptosis and so fully reversed the *Ccl5*<sup>-/-</sup> defect. In addition, the absence or blockade of CCR5 caused increased virus-inducible apoptosis at levels equivalent to those observed in *Ccl5*<sup>-/-</sup> macrophages. Thus, in *Ccl5*<sup>-/-</sup> and *Ccr5*<sup>-/-</sup> mice, accumulation of apoptotic macrophages in tissue could be explained by premature cell death before reaching the airspace. In addition, similar to mouse macrophages, we found that CCR5 blockade caused increased apoptosis in human macrophages infected with SeV as well as viruses that are commonly pathogenic in humans, i.e., RSV and influenza virus.

Additional work aimed to define how CCL5 and CCR5 protected macrophages against virus-induced apoptosis. Since viral entry and replication was unchanged by CCL5 deficiency, we concentrated on how CCL5 might influence intracellular death pathways. Initial experiments indicated that CCL5 caused phosphorylation of downstream signaling proteins ERK1/2 and AKT in mouse and human macrophages. CCL5 concentrations in the range detected during viral infection (0.1–10 nM) activated ERK1/2 and AKT via a mechanism that depended on CCR5. Treatment with CCL5 concentrations above the physiologic range (100 nM) caused further activation of ERK1/2 that did not depend on CCR5. This finding is consistent with reports of CCL5 multimer formation at higher concentrations that bind cell surface GAGs and activate SRC kinase-dependent signaling.<sup>9</sup> Together, our observations indicate that high levels of CCL5 (capable of multimer formation) signal through HCK independently of the CCR5 G-protein coupled receptor, but at physiologic levels, CCL5 (acting as a monomer) signals through CCR5 and independently of any SRC family kinases. In this case, CCR5 activation initiates dual signals to G<sub>ai</sub>/MEK/ERK or G<sub>ai</sub>/PI3K/AKT. Consequently, losing either of these two pathways should lead to loss of protection from virus-induced apoptosis. This possibility was confirmed when we observed that inhibition of either AKT or ERK pathways (under conditions not affecting baseline apoptosis) caused substantial increases in virus-induced apoptosis in wild-type but not *Ccl5*<sup>-/-</sup> macrophages.

In a final set of experiments, we aimed to more firmly link our observations in vivo with those in vitro. Similar to our observations in cultured macrophages, we found that *Ccl5*<sup>-/-</sup> and wild-type mice manifest similar activation of ERK1/2 and AKT at baseline but *Ccl5*<sup>-/-</sup> mice showed blunted activation after viral infection. These findings indicated that the same defect in intracellular death signaling was found in vivo as was identified in vitro in the setting of CCL5 deficiency. In addition, we tested whether macrophage depletion was sufficient to reproduce the pathology predicted by loss of macrophage anti-apoptotic signaling in the *Ccl5*<sup>-/-</sup> phenotype. We accomplished selective macrophage depletion of wild-type mice during SeV infection using clodronate liposomes. We found that the phenotype for macrophage-deficient mice follows closely the one predicted for defects in *Ccl5*<sup>-/-</sup> and *Ccr5*<sup>-/-</sup> mice, i.e., decreased clearance of virus and apoptotic, infected cells and concomitant decrease in survival from respiratory compromise. Moreover, wild-type and *Ccl5*<sup>-/-</sup> mice no longer exhibit differences in survival if both are macrophage depleted. The findings thereby establish a requirement for macrophage-dependent clearance of virus-infected cells that could be sufficient to explain the observed immune compromise in the setting of viral infection.

## REGULATION OF IMMUNE CELL TRAFFIC

Our studies established a distinct role for CCL5-CCR5 signaling in innate immune response to viral infection, but we still questioned whether chemokines in general, and CCL5 in particular, might somehow influence the adaptive immune response to viral infection. As noted above, previous work made it likely that chemokine influence is directed at traffic and activation of immune cells. For example, *Ccl3*<sup>-/-</sup> mice exhibit decreased inflammation and delayed clearance of virus during infection with influenza virus or pneumonia virus of mice (PVM).<sup>6,10</sup> However, we found little evidence of a change in the effector arm of the immune response, at least by 12 days after inoculation, in *Ccl5*<sup>-/-</sup> mice. We therefore questioned whether earlier events that are important for the initiation of the adaptive immune response might also be influenced by chemokine action. In support of this possibility, others have reported that CCR5 (as well as CCR1) appears to regulate the homeostatic recruitment of lung dendritic cells. For example, treatment with a CCL5 antagonist (met-CCL5) decreases the number of dendritic cells in the rat lung.<sup>11</sup> In addition, others recently showed that interferon-producing cells (also known as plasmacytoid dendritic cells) enter the lymph node via high endothelial venules using a CCR5-dependent mechanism during infection with *Mycobacterium tuberculosis*.<sup>12</sup> Whether this response is also dependent upon CCL5 signaling is not yet known. Nonetheless, if plasmacytoid dendritic cells condition the subsequent antigen-specific T cell response, this traffic defect represents an additional way in which CCL5-CCR5 interaction may influence the adaptive immune response.

Perhaps similar to the findings with tuberculosis models, we have found that CCL5-CCR5 interaction may regulate the recruitment of differentiating and maturing dendritic cells from the lung parenchyma to the draining lymph nodes. Thus, *Ccl5*<sup>-/-</sup> and *Ccr5*<sup>-/-</sup> mice appear to have fewer dendritic cells migrating to the draining lymph nodes compared to wild-type control mice at 3–5 days after inoculation with SeV. As noted above, we did not find much difference in the adaptive immune response by 12 days after inoculation. However, it is still possible that earlier events might be influenced by CCL5. Whether a significant degree of delay in the development of the adaptive immune response contributes to immune compromise during viral infection still needs to be defined. Nonetheless, our findings to date suggest that the afferent arm of the adaptive immune response may be influenced more strongly by CCL5-CCR5 signals whereas previous work has focused on the effector arm of the response.

## SUMMARY

Host defense against intracellular pathogens is traditionally defined by innate and adaptive immune responses aimed at death of infected cells. Chemokines and macrophages influence both arms of the immune response,<sup>13–15</sup> so it is not surprising that, in other models of infection, loss of chemokine expression results in decreased immune cell recruitment.<sup>6,7</sup> Based on this anti-inflammatory action, chemokine antagonism may be beneficial in the therapy of inflammatory diseases.<sup>16</sup> CCR5 signaling has also been targeted for specific blockade based on CCR5 capacity to serve as a viral coreceptor.<sup>17,18</sup> In the present experiments, however, we show that CCL5 has a distinct role in host defense based on activation of G-protein-dependent signaling pathways that are essential to inhibit apoptosis of virus-infected macrophages. In some circumstances, apoptosis of infected cells is helpful for host defense,<sup>19</sup> but in the present case, increased

apoptosis is harmful to the host since macrophages must resist cell death to efficiently clear virus-infected, apoptotic cells from the tissue. These studies define a new role for chemokine action during the innate immune response but do not yet fully exclude an additional role in the development of the adaptive immune response to viral infection. Recent work suggests that chemokines might influence both the afferent and efferent arms of this adaptive immune response. Defining this aspect of chemokine biology is already underway and will provide for a more complete framework for understanding the antiviral response and thereby improving it.

## References

1. Koga T, Sardina E, Tidwell RM, Pelletier MR, Look DC, Holtzman MJ. Virus-inducible expression of a host chemokine gene relies on replication-linked mRNA stabilization. *Proc Natl Acad Sci USA* 1999; 96:5680-5.
2. Tyner JW, Uchida O, Kajiura N, Kim EY, Patel AC, O'Sullivan MP, Walter MJ, Schwendener RA, Cook DN, Danoff TM, Holtzman MJ. Ccl5-CCR5 interaction provides antiapoptotic signals for macrophage survival during viral infection. *Nat Med* 2005; 11:1180-7.
3. Walter MJ, Kajiura N, Karanja P, Castro M, Holtzman MJ. IL-12 p40 production by barrier epithelial cells during airway inflammation. *J Exp Med* 2001; 193:339-52.
4. Walter MJ, Morton JD, Kajiura N, Agapov E, Holtzman MJ. Viral induction of a chronic asthma phenotype and genetic segregation from the acute response. *J Clin Invest* 2002; 110:165-75.
5. Schall TJ, Bacon K, Toy KJ, Goeddel DV. Selective attraction of monocytes and T lymphocytes of the memory phenotype by cytokine RANTES. *Nature* 1990; 347:669-71.
6. Cook DN, Beck MA, Coffman TM, Kirby SL, Sheridan JF, Pragnell IB, Smithies O. Requirement for MIP-1 $\alpha$  for an inflammatory response to viral infection. *Science* 1995; 269:1583-5.
7. Lu B, Rutledge BJ, Gu L, Fiorillo J, Lukacs NW, Kunkel SL, North R, Gerard C, Rollins BJ. Abnormalities in monocyte recruitment and cytokine expression in monocyte chemoattractant protein 1-deficient mice. *J Exp Med* 1998; 187:601-8.
8. Lukacs NW, Strieter RM, Warming K, Lincoln P, Chensue SW, Kunkel SL. Differential recruitment of leukocyte populations and alteration of airway hyperreactivity by C-C family chemokines in allergic airway inflammation. *J Immunol* 1997; 158:4398-404.
9. Chang TLY, Gordon CJ, Rosic-Mrkic B, Power C, Proudfoot AE, Moore JP, Tikola A. Interaction of the C-C chemokine RANTES with glycosaminoglycans activates a p44/42 mitogen-activated protein kinase-dependent signaling pathway and enhances human immunodeficiency virus type 1 infectivity. *J Virol* 2002; 76:2245-54.
10. Domachowski JB, Bonville CA, Gao JL, Murphy PM, Easton AJ, Rosenberg HF. The chemokine macrophage-inflammatory protein-1 $\alpha$  and its receptor CCR1 control pulmonary inflammation and antiviral host defense in paramyxovirus infection. *J Immunol* 2000; 165:2677-82.
11. Stumbles PA, Strickland DH, Pimm CL, Proksch SF, Marsh AM, McWilliam AS, Bosco A, Tobagus I, Thomas JA, Napoli S, Proudfoot AE, Wells TN, Holt PG. Regulation of dendritic cell recruitment into resting and inflamed airway epithelium: Use of alternative chemokine receptors as a function of inducing stimulus. *J Immunol* 2001; 167:228-34.
12. DiCocco TG, Blasius AL, Mak TW, Cella M, Colonna M. Adhesive mechanisms governing interferon-producing cell recruitment into lymph nodes. *J Exp Med* 2005; 202:687-96.
13. Bacon KB, Premack BA, Gardner P, Schall TJ. Activation of dual T cell signaling pathways by the chemokine RANTES. *Science* 1995; 269:1727-30.
14. Cyster JG. Chemokines and cell migration in secondary lymphoid organs. *Science* 1999; 286:2098-102.
15. Gu L, Tseng S, Horner RM, Tam C, Loda M, Rollins BJ. Control of Th2 polarization by the chemokine monocyte chemoattractant protein-1. *Nature* 2000; 404:407-11.
16. Thelen M. Dancing to the tune of chemokines. *Nat Immunol* 2001; 2:129-13.
17. Berger EA, Murphy PM, Farber JM. Chemokine receptors as HIV-1 coreceptors: Roles in viral entry, tropism, and disease. *Annu Rev Immunol* 1999; 17:657-700.
18. Lalani AS, Masters J, Zeng W, Barrett J, Pannu R, Everett H, Arendt CW, McFadden G. Use of chemokine receptors by poxviruses. *Science* 1999; 286:1968-71.
19. Lauber K, Bohn E, Krober SM, Xiao Y, Blumenthal SG, Lindemann RK, Marini P, Wiedig C, Zobywalski A, Baksh S, Xu Y, Autenrieth IB, Schulze-Osthoff K, Belka C, Stuhler G, Wesselborg S. Apoptotic cells induce migration of phagocytes via caspase-3-mediated release of a lipid attraction signal. *Cell* 2003; 113:717-30.