

2010

Exome sequencing, ANGPTL3 mutations, and familial combined hypolipidemia

Gustav Schonfeld
Washington University School of Medicine in St. Louis
Pin Yue
Washington University School of Medicine in St. Louis
et al

Follow this and additional works at: https://digitalcommons.wustl.edu/open_access_pubs

Please let us know how this document benefits you.

Recommended Citation

Schonfeld, Gustav; Yue, Pin; and et al, "Exome sequencing, ANGPTL3 mutations, and familial combined hypolipidemia." *The New England Journal of Medicine*. 363, 23. 2220-2227. (2010).
https://digitalcommons.wustl.edu/open_access_pubs/3065

This Open Access Publication is brought to you for free and open access by Digital Commons@Becker. It has been accepted for inclusion in Open Access Publications by an authorized administrator of Digital Commons@Becker. For more information, please contact vanam@wustl.edu.

BRIEF REPORT

Exome Sequencing, *ANGPTL3* Mutations, and Familial Combined Hypolipidemia

Kiran Musunuru, M.D., Ph.D., M.P.H., James P. Pirruccello, B.S., Ron Do, M.S., Gina M. Peloso, M.S., Candace Guiducci, B.S., Carrie Sougnez, B.S., Kiran V. Garimella, M.S., Sheila Fisher, M.L.A., Justin Abreu, M.S., Andrew J. Barry, B.S., Tim Fennell, B.S., Eric Banks, Ph.D., Lauren Ambrogio, B.S., Kristian Cibulskis, B.S., Andrew Kernytsky, Ph.D., Elena Gonzalez, B.S., Nicholas Rudzicz, M.S., James C. Engert, Ph.D., Mark A. DePristo, Ph.D., Mark J. Daly, Ph.D., Jonathan C. Cohen, Ph.D., Helen H. Hobbs, M.D., David Altshuler, M.D., Ph.D., Gustav Schonfeld, M.D., Stacey B. Gabriel, Ph.D., Pin Yue, Ph.D., and Sekar Kathiresan, M.D.

SUMMARY

We sequenced all protein-coding regions of the genome (the “exome”) in two family members with combined hypolipidemia, marked by extremely low plasma levels of low-density lipoprotein (LDL) cholesterol, high-density lipoprotein (HDL) cholesterol, and triglycerides. These two participants were compound heterozygotes for two distinct nonsense mutations in *ANGPTL3* (encoding the angiopoietin-like 3 protein). *ANGPTL3* has been reported to inhibit lipoprotein lipase and endothelial lipase, thereby increasing plasma triglyceride and HDL cholesterol levels in rodents. Our finding of *ANGPTL3* mutations highlights a role for the gene in LDL cholesterol metabolism in humans and shows the usefulness of exome sequencing for identification of novel genetic causes of inherited disorders. (Funded by the National Human Genome Research Institute and others.)

FAMILIAL HYPOBETALIPOPROTEINEMIA IS AN INHERITED DISORDER OF lipid metabolism defined by very low levels (<5th percentile of age- and sex-specific values) of plasma apolipoprotein B and LDL cholesterol. Familial hypobetalipoproteinemia is genetically heterogeneous.^{1,2} The best-characterized cases have been linked to mutations in the gene encoding apolipoprotein B (*APOB*) that lead to less apolipoprotein B synthesis and reduced secretion of very-low-density lipoprotein (VLDL) from the liver. As a consequence of impaired hepatic export of VLDL, persons with familial hypobetalipoproteinemia due to a deficiency of apolipoprotein B are prone to hepatic steatosis.^{3,4} Persons with hypobetalipoproteinemia may also have fat malabsorption due to impaired incorporation of dietary fats into chylomicrons in the absorptive cells of the intestine.

In a number of families with familial hypobetalipoproteinemia,⁵ sequencing of *APOB* has failed to identify mutations, and linkage analyses have pointed to other chromosomal regions.^{6,7} Furthermore, despite family members having plasma apolipoprotein B and LDL cholesterol levels as low as those of persons with mutations in *APOB*, they do not appear to have a greater susceptibility to hepatic steatosis or gastrointestinal symptoms than their unaffected relatives.⁸ To date, efforts to identify the gene defects in these families have not been successful.

From the Cardiovascular Research Center (K.M., J.P.P., R.D., S.K.), Center for Human Genetic Research (K.M., J.P.P., R.D., M.J.D., D.A., S.K.), and Department of Molecular Biology (D.A.), Massachusetts General Hospital; Departments of Medicine (K.M., M.J.D., D.A., S.K.) and Genetics (D.A.), Harvard Medical School; and Department of Biostatistics, Boston University School of Public Health (G.M.P.) — all in Boston; Program in Medical and Population Genetics, Broad Institute, Cambridge, MA (K.M., J.P.P., R.D., C.G., C.S., K.V.G., S.F., J.A., A.J.B., T.F., E.B., L.A., K.C., A.K., E.G., M.A.D., M.J.D., D.A., S.B.G., S.K.); Johns Hopkins University School of Medicine, Baltimore (K.M., J.P.P.); Department of Human Genetics, McGill University, Montreal (R.D., N.R., J.C.E.); Framingham Heart Study of the National Heart, Lung, and Blood Institute, Framingham, MA (G.M.P.); Departments of Molecular Genetics and Internal Medicine, University of Texas Southwestern Medical Center at Dallas, Dallas (J.C.C., H.H.H.); and Washington University in St. Louis School of Medicine, St. Louis (G.S., P.Y.). Address reprint requests to Dr. Kathiresan at the Center for Human Genetic Research and Cardiovascular Research Center, Massachusetts General Hospital and Harvard Medical School, 185 Cambridge St., CPZN 5.252, Boston, MA 02114, or at skathiresan@partners.org.

Dr. Musunuru, Mr. Pirruccello, and Mr. Do contributed equally to this article, as did Drs. Gabriel, Yue, and Kathiresan.

This article (10.1056/NEJMoa1002926) was published on October 13, 2010, at NEJM.org.

N Engl J Med 2010;363:2220-7.

Copyright © 2010 Massachusetts Medical Society.

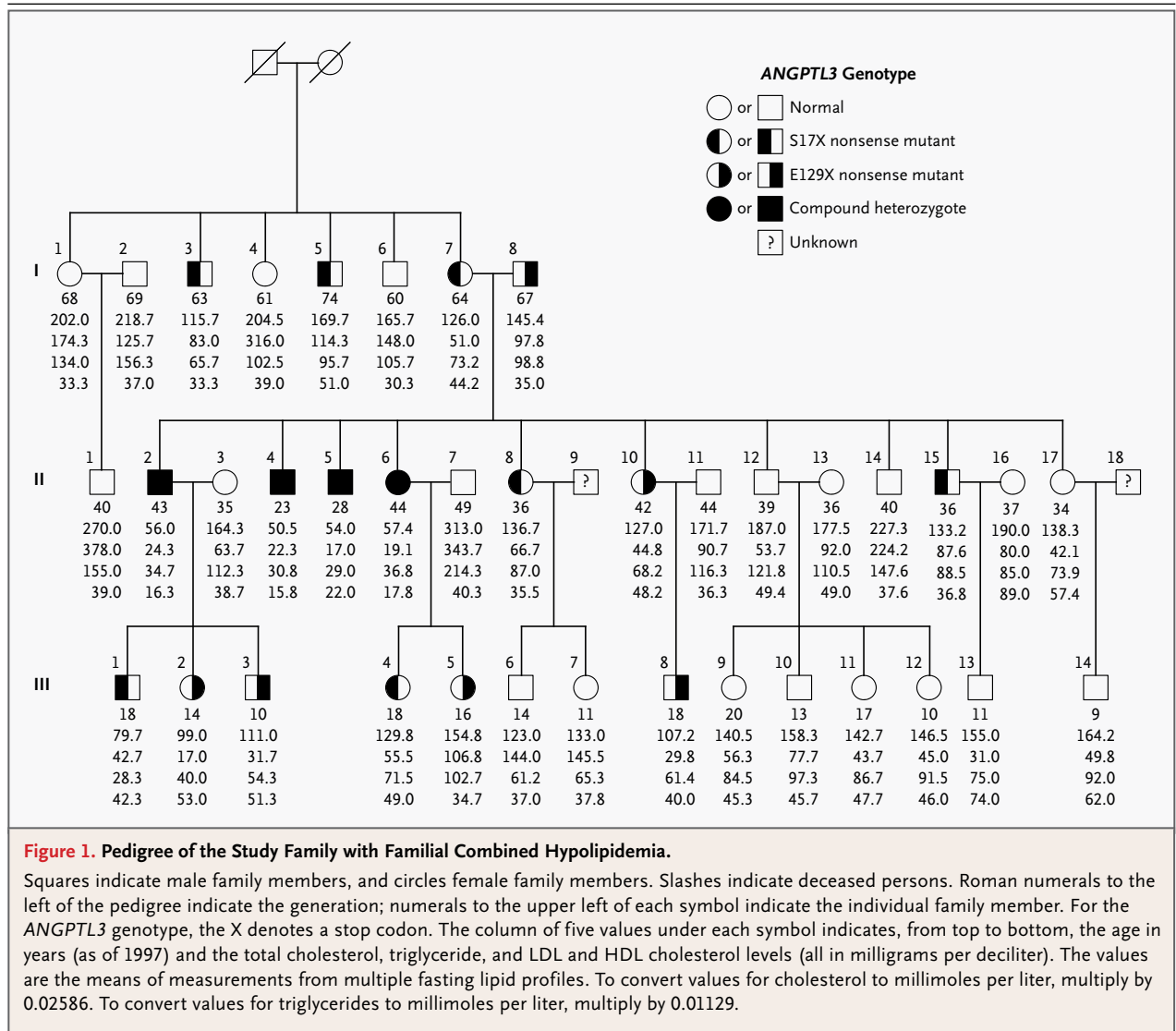


Figure 1. Pedigree of the Study Family with Familial Combined Hypolipidemia.

Squares indicate male family members, and circles female family members. Slashes indicate deceased persons. Roman numerals to the left of the pedigree indicate the generation; numerals to the upper left of each symbol indicate the individual family member. For the *ANGPTL3* genotype, the X denotes a stop codon. The column of five values under each symbol indicates, from top to bottom, the age in years (as of 1997) and the total cholesterol, triglyceride, and LDL and HDL cholesterol levels (all in milligrams per deciliter). The values are the means of measurements from multiple fasting lipid profiles. To convert values for cholesterol to millimoles per liter, multiply by 0.02586. To convert values for triglycerides to millimoles per liter, multiply by 0.01129.

Exome sequencing (i.e., sequencing of all protein-coding regions of the genome) in a few affected persons has proved successful at uncovering novel causal mutations in genetic disorders.⁹⁻¹¹ This technique is considered to be unbiased — it does not focus on specific genes or loci deemed of interest on the basis of assumptions about possible causal associations. We applied next-generation sequencing (the most recent sequencing methods enabling low-cost, rapid, broad sequencing) to exomes chosen on the basis of solution hybrid selection (a method for capturing a targeted subgroup of genomic DNA) from two siblings with familial hypobetalipoproteinemia not linked to *APOB*, to identify the causative gene.

METHODS

PARTICIPANTS

We studied a family of European descent, some of whose members had hypobetalipoproteinemia in which linkage analysis had ruled out *APOB* as the causative gene (the F kindred in the study by Pulai and colleagues⁵) (Fig. 1). Members of this family were recruited from 1994 through 1997. Blood lipid levels were measured at multiple time points from 1994 through 2003; averages of the measurements were used in analyses. The last follow-up visit occurred in 2003; at that time, none of the family members had a history of coronary heart disease, and the oldest member was 81 years

of age. Selected family members underwent lipoprotein metabolic studies and magnetic resonance spectroscopic measurements of hepatic fat.^{8,12}

DNA samples were available from 38 members across three generations. Full lipid profiles, including apolipoprotein B levels, of these family members are listed in Table 1 in the Supplementary Appendix, available with the full text of this article at NEJM.org. Several family members had low plasma levels of LDL cholesterol and triglycerides. Four persons in the second generation (Participants II.2, II.4, II.5, and II.6) had combined hypolipidemia, with extremely low fasting plasma levels of LDL cholesterol, triglycerides, and HDL cholesterol. Two of the siblings with combined hypolipidemia (Participants II.4 and II.5) underwent exome sequencing.

Statistical modeling of genotypes and phenotypes (lipid and lipoprotein metabolic phenotypes) consisted of linear regression performed with the use of R software (www.r-project.org). “Residual” lipid phenotypes were ascertained after adjustment for age, age squared, and sex. The institutional

review boards at the Washington University in St. Louis School of Medicine and the Broad Institute approved the study protocols. All participants provided written informed consent.

EXOME SEQUENCING, SANGER SEQUENCING, AND LINKAGE ANALYSES

A solution hybrid selection method¹³ was used to isolate DNA of the exome, which was subjected to sequencing (on the Genome Analyzer II platform; Illumina). Sixty exomes from persons of European descent, sequenced with the same methods, were used as controls. The full methods used for exome sequencing, Sanger sequencing, and linkage analysis are described in the Supplementary Appendix.

REPLICATION

The sequencing of *ANGPTL3* in participants in the Dallas Heart Study has been described previously.¹⁴ Statistical modeling of genotypes and phenotypes was performed with the use of linear regression analysis involving adjustment for age, sex, race or

Table 1. Details of Solution Hybrid Selection, and Results of Exome Sequencing, in Two Study Participants.*

Sample	Participant II.4	Participant II.5
No. of bait DNA bases	37,640,396	37,640,396
No. of target DNA bases	28,646,006	28,646,006
Total bases sequenced — no. (%)	10,529,696,342	9,902,941,465
Outside bait region	2,062,882,735 (19.6)	1,905,438,918 (19.2)
Near bait region	1,090,792,362 (10.4)	943,516,981 (9.5)
Within bait region	7,376,021,245 (70.0)	7,053,985,566 (71.2)
Within target region	6,007,508,537 (57.1)	5,793,926,100 (58.5)
Coverage†		
Within bait region	196	187
Within target region	210	202
Base covered ≥10 times — % of region	93.4	92.1
Base covered ≥20 times — % of region	90.1	88.0
Identified variants‡		
Total no.	18,259	18,123
Transition-to-transversion ratio	2.93	2.98
No. of variants meeting quality-control standard	16,426	16,246
No. in dbSNP	15,680	15,512
Concordance with dbSNP — %	99.50	99.52
No. not in dbSNP	746	734
No. not in 1000 Genomes Project database	481	481
No. not in the 60 control exomes	266	277

Table 1. (Continued.)		
Sample	Participant II.4	Participant II.5
Coding single-nucleotide variants		
Known		
Total — no.	16,160	15,969
Transition-to-transversion ratio	3.20	3.26
Homozygous — no.	6284	6419
Heterozygous — no.	9876	9550
Synonymous — no.	9260	9179
Missense — no.	6622	6525
Premature termination — no.	40	41
Splice site — no.	238	224
Novel		
Total — no.	266	277
Transition-to-transversion ratio	2.86	2.85
Homozygous — no.	6	7
Heterozygous — no.	260	270
Synonymous — no.	107	116
Missense — no.	151	149
Premature termination — no.	5	7
Splice site — no.	3	4
No. of genes with novel homozygous or compound heterozygous variants shared between participants§	1	1

* The bait DNA is the region of the genome preferentially retained during the hybrid selection step; it is therefore vastly enriched during sequencing, as compared with unselected regions. The target DNA is the subgroup of the bait DNA that is of special interest — in this study, the 164,688 exon sequences with additional two-nucleotide flanking sequences, to capture splice sites.

† “Coverage” is the average number of times each base is represented in the sequence reads, as a measure of the degree to which the region of interest is captured by the sequencing method.

‡ The term dbSNP refers to the Single Nucleotide Polymorphism Database (build 130) of the National Center for Biotechnology Information.

§ The one shared gene is *ANGPTL3*.

ethnic group, and treatment for hypercholesterolemia.

RESULTS

EXOME SEQUENCING

A total of 28,646,006 bases in 164,688 exons from 15,994 genes were targeted for sequencing (Table 1). For each of the two participants, we generated approximately 6 billion bases of sequence, allowing each targeted base to be read approximately 200 times. For each participant, approximately 270 new single-nucleotide variants were found, of which approximately 150 were missense mutations and approximately 6 were nonsense (premature termination) mutations (Table 1).

NONSENSE VARIANTS IN *ANGPTL3*

To identify the causal variants in the two participants who underwent sequencing (Participants II.4 and II.5), we hypothesized that the phenotype of combined hypolipidemia (i.e., the concurrence of low levels of plasma HDL cholesterol, LDL cholesterol, and triglycerides) was inherited in an autosomal recessive fashion. Therefore, we sought genes harboring novel variants in both alleles of both participants. We eliminated variants whose features did not meet quality-control standards (see the Supplementary Appendix) and variants that were not shared between the two probands. We also eliminated any variant sites that were present in the Single Nucleotide Polymorphism Database (dbSNP, build 130) of the National Center

for Biotechnology Information, in the genomes sequenced by the 1000 Genomes Project, or in the 60 control exomes (Table 1).

Only one gene harbored novel variants in both alleles in both siblings: *ANGPTL3*. *ANGPTL3* harbored two nonsense variants: a single-nucleotide variant (GAA→TAA, at nucleotide 62,836,210 on chromosome 1) that introduces a nonsense mutation at position 129, resulting in the amino acid mutation E129X; and a double nucleotide variant (TCC→TGA, at nucleotides 62,835,875 to 62,835,876 on chromosome 1) that introduces a nonsense mutation at position 17, resulting in the amino acid mutation S17X. (The X in both amino acid mutations denotes a stop codon.) Both mutations are located in the first exon of *ANGPTL3* (Fig. 1 in the Supplementary Appendix).

Sanger sequencing of the first *ANGPTL3* exon of all 38 persons in the study family who were available confirmed that the two nonsense mutations segregated independently (Fig. 1). The 13 family members heterozygous for just one of the two nonsense mutations had significantly lower plasma levels of LDL cholesterol (mean, 72 mg per deciliter [1.9 mmol per liter]) and triglycerides (mean, 64 mg per deciliter [0.7 mmol per liter]) than did the 21 family members with neither mutation (mean for LDL cholesterol, 109 mg per deciliter; $P<0.001$; mean for triglycerides, 130 mg per deciliter; $P=0.01$). The remaining 4 participants were compound heterozygotes and had even lower plasma LDL cholesterol and triglyceride levels (means, 33 mg per deciliter [0.9 mmol per liter] and 21 mg per deciliter [0.2 mmol per liter], respectively). Thus, the nonsense mutations in *ANGPTL3* affected phenotypes in a manner dependent on the gene dosage — the number of alleles present in a given person ($P<0.001$ for LDL cholesterol and $P=0.004$ for triglycerides, from additive models) (Fig. 2).

In contrast, the nonsense mutations were recessive with respect to HDL cholesterol: family members heterozygous for a single nonsense mutation had plasma HDL cholesterol levels (mean, 43 mg per deciliter [1.1 mmol per liter]) that did not differ significantly from those of family members with no *ANGPTL3* mutation (mean, 46 mg per deciliter [1.2 mmol per liter]; $P=0.34$), whereas compound heterozygotes had a very low level of HDL cholesterol (mean, 18 mg per deciliter [0.5 mmol per liter]; $P<0.001$ from a recessive model).

These relations were maintained even after adjustment of lipid levels for age and sex (Fig. 2).

LINKAGE ANALYSES

To determine whether mutations at another locus could account for the hypolipidemia in this family, we performed linkage analyses, using LDL cholesterol and HDL cholesterol as quantitative traits. The highest lod scores for both traits occurred between the DNA markers GATA72H07 and GATA109 on chromosome 1p33–31.1, the region harboring *ANGPTL3*. The peak lod scores for LDL cholesterol were 3.07 (at GATA165C03) and 3.89 (at GATA61A06) (Table 2 in the Supplementary Appendix). Significant lod scores were not found for regions on chromosomes 3 and 10 previously reported to be associated with familial hypobetalipoproteinemia,^{6,7} nor for any other regions in the genome. These results provide additional evidence that the nonsense mutations in *ANGPTL3* are causal for the combined hypolipidemia in this family. Additional details regarding the linkage analyses are given in the Supplementary Appendix.

REPLICATION IN A POPULATION-BASED COHORT

Sequencing of *ANGPTL3* in participants in the Dallas Heart Study¹⁴ showed that carriers of frameshift mutations had significantly lower LDL cholesterol levels than noncarriers. Details regarding these analyses are given in the Supplementary Appendix.

STUDIES OF LIPOPROTEIN METABOLISM

Physiological studies of selected members of the study family indicated that carriers of *ANGPTL3* mutations had decreased rates of VLDL production and increased rates of LDL fractional catabolism. Details regarding these analyses are given in the Supplementary Appendix.

DISCUSSION

Whole-exome sequencing in two siblings with a clinical syndrome of combined hypolipidemia revealed two independent nonsense mutations in *ANGPTL3*. One, S17X, is predicted to terminate translation near the N-terminal of the protein; the other, E129X, is predicted to prematurely terminate the protein at residue 129. Family members who were heterozygous for either mutation had plasma levels of LDL cholesterol and triglycerides

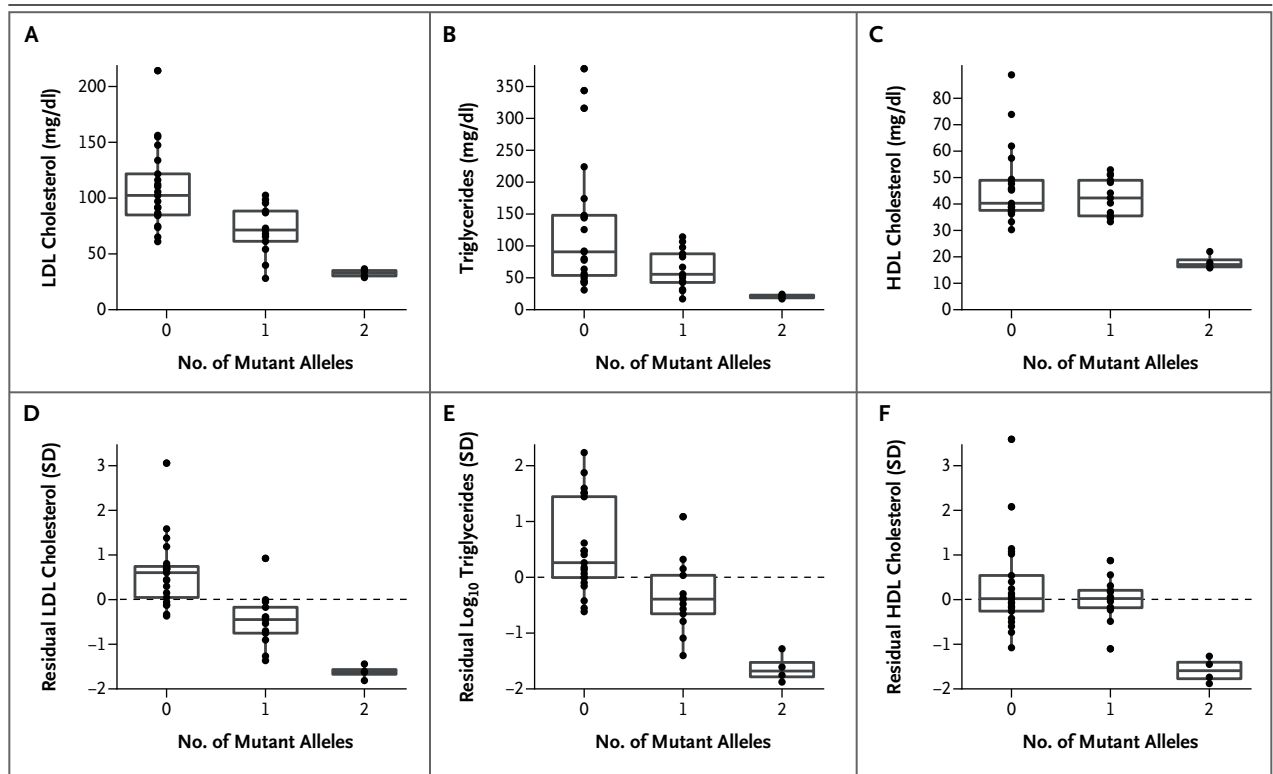


Figure 2. Phenotypes Associated with Familial Combined Hypolipidemia in the Study Family, According to Number of Mutant *ANGPTL3* Alleles.

Shown are the levels of low-density lipoprotein (LDL) cholesterol (Panel A), triglycerides (Panel B), and high-density lipoprotein (HDL) cholesterol (Panel C) in the family members, grouped according to *ANGPTL3* genotype. The corresponding “residual” phenotypes are shown (in Panels D, E, and F, respectively), in units normalized to the standard deviation, after adjustment for age, age squared, and sex. The box plots give the median levels (middle horizontal line in each box), the interquartile ranges (delineated by the top and bottom of each box), and outliers falling below the 5th percentile or above the 95th percentile (points below or above the vertical lines, respectively). To convert values for cholesterol to millimoles per liter, multiply by 0.02586. To convert values for triglycerides to millimoles per liter, multiply by 0.01129.

that were intermediate between the levels in persons with neither mutation and those with both mutations, findings consistent with a codominant mode of inheritance for the LDL cholesterol and triglyceride phenotypes. In contrast, the level of HDL cholesterol appears to segregate as a recessive trait. Family members who had both nonsense alleles, but not members with just one, had significantly lower plasma HDL cholesterol levels than members with neither mutation. Thus, persons with the two nonsense *ANGPTL3* alleles had low plasma levels of LDL cholesterol, triglycerides, and HDL cholesterol, a phenotype we propose to call familial combined hypolipidemia.

The protein *ANGPTL3* is secreted and expressed primarily in the liver. The underlying gene was originally associated with lipid levels on the basis of positional cloning of a causal mutation in

a hypolipidemic mouse strain.¹⁵ Expression of the recombinant protein in the livers of these mice increased plasma triglyceride and cholesterol levels. Subsequent studies showed that targeted inactivation of *Angptl3* in mice lowered plasma cholesterol and triglyceride levels — both in wild-type mice,¹⁶ in which cholesterol is transported primarily in HDL particles, and in mice in which *ApoE* or *Ldlr* (the LDL receptor gene) had been knocked out,^{17,18} in which cholesterol is carried primarily by VLDL, intermediate-density lipoprotein, and LDL. Taken together, these data suggest that *ANGPTL3* normally acts to increase plasma levels of triglycerides, LDL cholesterol, and HDL cholesterol.

This conclusion is consistent with the finding of combined hypolipidemia in persons with two defective *ANGPTL3* alleles. The activities of lipo-

protein lipase and endothelial lipase, key enzymes in the metabolism of circulating triglycerides and HDL cholesterol, respectively, are elevated in *Angptl3*-knockout mice,¹⁹⁻²¹ suggesting that increased activity of these enzymes may explain the low levels of triglycerides and HDL cholesterol in humans with *ANGPTL3* nonsense mutations. The mechanism by which deficiency of *ANGPTL3* lowers LDL cholesterol remains to be determined.

Confirming the link between *ANGPTL3* and plasma LDL cholesterol levels is the finding that Dallas Heart Study participants with frameshift mutations had significantly lower LDL cholesterol levels than the rest of the cohort. Furthermore, in genomewide association screening of common variants in more than 100,000 participants, we found that polymorphisms near *ANGPTL3* are highly significantly associated with lipid traits — most strongly with the triglyceride level (e.g., the polymorphism rs2131925, associated with a change of 4.9 mg per deciliter [0.05 mmol per liter] per allele [$P=9\times 10^{-43}$ for the association]), but also with the LDL cholesterol level (e.g., rs2131925, associated with a change of 1.6 mg per deciliter [0.04 mmol per liter] per allele [$P=2\times 10^{-17}$ for the association]). These two associations were consistent with the lipid patterns observed in the current family under study.²²

This contrasts with studies of common variants near *LPL* (the gene encoding lipoprotein lipase), which are associated with triglycerides and HDL cholesterol, and those near *LIPG* (encoding endothelial lipase), which are associated with HDL cholesterol; neither the *LPL* variants nor the *LIPG* variants are associated with LDL cholesterol.²² These studies are consistent with observations in genetically modified mice that effects of *ANGPTL3*

on triglycerides and HDL cholesterol are mediated by lipoprotein lipase and endothelial lipase, respectively, and that the mechanism by which *ANGPTL3* modulates plasma LDL cholesterol levels is distinct.

The apparent discrepancy between the modes of inheritance of reduced LDL cholesterol and triglyceride levels and reduced HDL cholesterol levels also argues for distinct mechanisms of action on different lipoproteins. We found that carriers of *ANGPTL3* nonsense mutations had decreased rates of VLDL apolipoprotein B production and increased fractional catabolic rates for LDL apolipoprotein B. This suggests that *ANGPTL3* acts directly in the liver to regulate hepatocellular lipoprotein secretion and clearance, which is distinct from the role of the protein in the inhibition of lipoprotein lipase and endothelial lipase in the bloodstream.

In conclusion, we found that nonsense mutations in *ANGPTL3* resulted in decreased plasma LDL cholesterol levels and, in persons harboring two nonsense alleles, a phenotype of familial combined hypolipidemia. This finding highlights the promise of exome sequencing in medical genetics. It also underscores a new mechanism for the lowering of LDL cholesterol in humans.

Supported by grants from the National Human Genome Research Institute of the National Institutes of Health (NIH) (Medical Sequencing Program grant U54 HG003067, to the Broad Institute for exome sequencing), the National Heart, Lung, and Blood Institute (NHLBI) of the NIH (RC1 HL099793, RC1 HL099634, and RC2 HL101864, to Dr. Kathiresan; K99 HL098364, to Dr. Musunuru; and R01 HL082896, to Drs. Cohen and Hobbs for analysis of *ANGPTL3* in the Dallas Heart Study), the Donovan Family Foundation (to Dr. Kathiresan), the Sarnoff Cardiovascular Research Foundation (a research fellowship, to Mr. Pirruccello), and the Canadian Institutes of Health Research (a Canada Graduate Doctoral Scholarship, to Mr. Do).

Disclosure forms provided by the authors are available with the full text of this article at NEJM.org.

REFERENCES

- Schonfeld G, Lin X, Yue P. Familial hypobetalipoproteinemia: genetics and metabolism. *Cell Mol Life Sci* 2005;62:1372-8.
- Hooper AJ, van Bockxmeer FM, Burnett JR. Monogenic hypocholesterolaemic lipid disorders and apolipoprotein B metabolism. *Crit Rev Clin Lab Sci* 2005;42:515-45.
- Tarugi P, Lonardo A, Ballarini G, et al. Fatty liver in heterozygous hypobetalipoproteinemia caused by a novel truncated form of apolipoprotein B. *Gastroenterology* 1996;111:1125-33.
- Schonfeld G, Patterson BW, Yablonskiy DA, et al. Fatty liver in familial hypobetalipoproteinemia: triglyceride assembly into VLDL particles is affected by the extent of hepatic steatosis. *J Lipid Res* 2003;44:470-8.
- Pulai JI, Neuman RJ, Groenewegen AW, Wu J, Schonfeld G. Genetic heterogeneity in familial hypobetalipoproteinemia: linkage and non-linkage to the apoB gene in Caucasian families. *Am J Med Genet* 1998;76:79-86.
- Yuan B, Neuman R, Duan SH, et al. Linkage of a gene for familial hypobetalipoproteinemia to chromosome 3p21.1-22. *Am J Hum Genet* 2000;66:1699-704.
- Sherva R, Yue P, Schonfeld G, Neuman RJ. Evidence for a quantitative trait locus affecting low levels of apolipoprotein B and low density lipoprotein on chromosome 10 in Caucasian families. *J Lipid Res* 2007;48:2632-9.
- Yue P, Tanoli T, Wilhelm O, Patterson B, Yablonskiy D, Schonfeld G. Absence of fatty liver in familial hypobetalipoproteinemia linked to chromosome 3p21. *Metabolism* 2005;54:682-8.
- Ng SB, Turner EH, Robertson PD, et al. Targeted capture and massively parallel sequencing of 12 human exomes. *Nature* 2009;461:272-6.
- Choi M, Scholl UI, Ji W, et al. Genetic diagnosis by whole exome capture and massively parallel DNA sequencing. *Proc Natl Acad Sci U S A* 2009;106:19096-101.
- Ng SB, Buckingham KJ, Lee C, et al.

- Exome sequencing identifies the cause of a mendelian disorder. *Nat Genet* 2010;42:30-5.
12. Elias N, Patterson BW, Schonfeld G. In vivo metabolism of ApoB, ApoA-I, and VLDL triglycerides in a form of hypobeta-lipoproteinemia not linked to the ApoB gene. *Arterioscler Thromb Vasc Biol* 2000;20:1309-15.
13. Gnirke A, Melnikov A, Maguire J, et al. Solution hybrid selection with ultralong oligonucleotides for massively parallel targeted sequencing. *Nat Biotechnol* 2009;27:182-9.
14. Romeo S, Yin W, Kozlitina J, et al. Rare loss-of-function mutations in ANGPTL family members contribute to plasma triglyceride levels in humans. *J Clin Invest* 2009;119:70-9.
15. Koishi R, Ando Y, Ono M, et al. Angptl3 regulates lipid metabolism in mice. *Nat Genet* 2002;30:151-7.
16. Köster A, Chao YB, Mosior M, et al. Transgenic angiotensin-like (angptl)4 overexpression and targeted disruption of angptl4 and angptl3: regulation of triglyceride metabolism. *Endocrinology* 2005;146:4943-50.
17. Ando Y, Shimizugawa T, Takeshita S, et al. A decreased expression of angiotensin-like 3 is protective against atherosclerosis in apoE-deficient mice. *J Lipid Res* 2003;44:1216-23.
18. Lee EC, Desai U, Gololobov G, et al. Identification of a new functional domain in angiotensin-like 3 (ANGPTL3) and angiotensin-like 4 (ANGPTL4) involved in binding and inhibition of lipoprotein lipase (LPL). *J Biol Chem* 2009;284:13735-45.
19. Shimizugawa T, Ono M, Shimamura M, et al. ANGPTL3 decreases very low density lipoprotein triglyceride clearance by inhibition of lipoprotein lipase. *J Biol Chem* 2002;277:33742-8.
20. Shimamura M, Matsuda M, Yasumo H, et al. Angiotensin-like protein3 regulates plasma HDL cholesterol through suppression of endothelial lipase. *Arterioscler Thromb Vasc Biol* 2007;27:366-72.
21. Jin W, Wang X, Millar JS, et al. Hepatic proprotein convertases modulate HDL metabolism. *Cell Metab* 2007;6:129-36.
22. Teslovich TM, Musunuru K, Smith AV, et al. Biological, clinical and population relevance of 95 loci for blood lipids. *Nature* 2010;466:707-13.

Copyright © 2010 Massachusetts Medical Society.