

Washington University School of Medicine

Digital Commons@Becker

Open Access Publications

2018

Requisite endothelial reactivation and effective siRNA nanoparticle targeting of Etv2/Er71 in tumor angiogenesis

Ashraf Ul Kabir

Washington University School of Medicine in St. Louis

Tae-Jin Lee

Washington University School of Medicine in St. Louis

Hua Pan

University of South Florida

Jeffrey C. Berry

Washington University School of Medicine in St. Louis

Karen Krchma

Washington University School of Medicine in St. Louis

See next page for additional authors

Follow this and additional works at: https://digitalcommons.wustl.edu/open_access_pubs

Please let us know how this document benefits you.

Recommended Citation

Kabir, Ashraf Ul; Lee, Tae-Jin; Pan, Hua; Berry, Jeffrey C.; Krchma, Karen; Wu, Jun; Liu, Fang; Kang, Hee-Kyoung; Hinman, Kristina; Yang, Lihua; Hamilton, Samantha; Zhou, Qingyu; Veis, Deborah J.; Mecham, Robert P.; Wickline, Samuel A.; Miller, Mark J.; and Choi, Kyunghee, "Requisite endothelial reactivation and effective siRNA nanoparticle targeting of Etv2/Er71 in tumor angiogenesis." JCI Insight. 3, 8. e97349. (2018).

https://digitalcommons.wustl.edu/open_access_pubs/6811

This Open Access Publication is brought to you for free and open access by Digital Commons@Becker. It has been accepted for inclusion in Open Access Publications by an authorized administrator of Digital Commons@Becker. For more information, please contact vanam@wustl.edu.

Authors

Ashraf Ul Kabir, Tae-Jin Lee, Hua Pan, Jeffrey C. Berry, Karen Krchma, Jun Wu, Fang Liu, Hee-Kyoung Kang, Kristina Hinman, Lihua Yang, Samantha Hamilton, Qingyu Zhou, Deborah J. Veis, Robert P. Mecham, Samuel A. Wickline, Mark J. Miller, and Kyunghee Choi

Requisite endothelial reactivation and effective siRNA nanoparticle targeting of *Etv2*/*Er71* in tumor angiogenesis

Ashraf Ul Kabir, ... , Mark J. Miller, Kyunghee Choi

JCI Insight. 2018;3(8):e97349. <https://doi.org/10.1172/jci.insight.97349>.

Research Article

Angiogenesis

Angiogenesis, new blood vessel formation from preexisting vessels, is critical for solid tumor growth. As such, there have been efforts to inhibit angiogenesis as a means to obstruct tumor growth. However, antiangiogenic therapy faces major challenges to the selective targeting of tumor-associated-vessels, as current antiangiogenic targets also disrupt steady-state vessels. Here, we demonstrate that the developmentally critical transcription factor *Etv2* is selectively upregulated in both human and mouse tumor-associated endothelial cells (TAECs) and is required for tumor angiogenesis. Two-photon imaging revealed that *Etv2*-deficient tumor-associated vasculature remained similar to that of steady-state vessels. *Etv2*-deficient TAECs displayed decreased *Flk1* (also known as *Vegfr2*) expression, FLK1 activation, and proliferation. Endothelial tube formation, proliferation, and sprouting response to VEGF, but not to FGF2, was reduced in *Etv2*-deficient ECs. ROS activated *Etv2* expression in ECs, and ROS blockade inhibited *Etv2* expression in TAECs in vivo. Systemic administration of *Etv2* siRNA nanoparticles potently inhibited tumor growth and angiogenesis without cardiovascular side effects. These studies highlight a link among vascular oxidative stress, *Etv2* expression, and VEGF response that is critical for tumor angiogenesis. Targeting the ETV2 pathway might offer a unique opportunity for more selective antiangiogenic therapies.

Find the latest version:

<http://jci.me/97349-pdf>



Requisite endothelial reactivation and effective siRNA nanoparticle targeting of *Etv2/Er71* in tumor angiogenesis

Ashraf Ul Kabir,^{1,2} Tae-Jin Lee,¹ Hua Pan,³ Jeffrey C. Berry,⁴ Karen Krchma,¹ Jun Wu,¹ Fang Liu,¹ Hee-Kyoung Kang,⁵ Kristina Hinman,⁶ Lihua Yang,⁴ Samantha Hamilton,⁴ Qingyu Zhou,⁷ Deborah J. Veis,⁴ Robert P. Mecham,⁶ Samuel A. Wickline,³ Mark J. Miller,⁴ and Kyunghee Choi^{1,2,8}

¹Department of Pathology and Immunology and ²Molecular and Cell Biology Program, Washington University School of Medicine, St. Louis, Missouri, USA. ³Health Heart Institute, Morsani College of Medicine, University of South Florida, Tampa, Florida, USA. ⁴Department of Medicine, Washington University School of Medicine, St. Louis, Missouri, USA.

⁵Department of Pharmacology, School of Medicine, Jeju National University, Jeju, South Korea. ⁶Department of Cell Biology and Physiology, Washington University School of Medicine, St. Louis, Missouri, USA. ⁷Department of Pharmaceutical Science, College of Pharmacy, University of South Florida, Tampa, Florida, USA. ⁸Graduate School of Biotechnology, Kyung Hee University, Yongin, South Korea.

Angiogenesis, new blood vessel formation from preexisting vessels, is critical for solid tumor growth. As such, there have been efforts to inhibit angiogenesis as a means to obstruct tumor growth. However, antiangiogenic therapy faces major challenges to the selective targeting of tumor-associated-vessels, as current antiangiogenic targets also disrupt steady-state vessels. Here, we demonstrate that the developmentally critical transcription factor *Etv2* is selectively upregulated in both human and mouse tumor-associated endothelial cells (TAEs) and is required for tumor angiogenesis. Two-photon imaging revealed that *Etv2*-deficient tumor-associated vasculature remained similar to that of steady-state vessels. *Etv2*-deficient TAEs displayed decreased *Flk1* (also known as *Vegfr2*) expression, FLK1 activation, and proliferation. Endothelial tube formation, proliferation, and sprouting response to VEGF, but not to FGF2, was reduced in *Etv2*-deficient ECs. ROS activated *Etv2* expression in ECs, and ROS blockade inhibited *Etv2* expression in TAEs in vivo. Systemic administration of *Etv2* siRNA nanoparticles potentially inhibited tumor growth and angiogenesis without cardiovascular side effects. These studies highlight a link among vascular oxidative stress, *Etv2* expression, and VEGF response that is critical for tumor angiogenesis. Targeting the *ETV2* pathway might offer a unique opportunity for more selective antiangiogenic therapies.

Introduction

Angiogenesis is an important process for successful embryogenesis, postinjury tissue repair and regeneration, and progression of many pathologic conditions, including cancer. Thus, while promotion of angiogenesis is critical to tissue repair and regeneration, inhibition of angiogenesis is important to obstruct pathologic conditions, such as for tumor growth. Currently, it remains a challenge to selectively target tumor angiogenesis, as many of the factors and pathways presently targeted in therapies are shared between normal and tumor vessels (1–3). For example, anti-VEGF therapies, although considered to be most prevalent in inhibiting tumor angiogenesis, have severe shortcomings in specifically targeting tumor-associated vessels undergoing neoangiogenesis (4, 5), as VEGF is also required for physiological steady-state vessels (6, 7). Considering these limitations, it would be crucial to identify molecular marker(s) and signaling pathways uniquely functioning in tumor-associated vessels that can be exclusively targeted.

ETS transcription factors have emerged as critical regulators of angiogenesis (8–10). A winged helix-turn-helix motif formed by the ETS domain can bind a consensus sequence (GGAA/T) to regulate target gene expression (11). Many ETS factors are redundantly expressed in hematopoietic and endothelial cells (ECs) in the developing embryo (12, 13). Consistently, mice or zebrafish deficient in any of these *Ets* factors display

Authorship note: AUK and TJL contributed equally to this work.

Conflict of interest: SAW has equity in Trasir Therapeutics Inc.

License: This work is licensed under the Creative Commons Attribution 4.0 International License. To view a copy of this license, visit <http://creativecommons.org/licenses/by/4.0/>.

Submitted: September 6, 2017

Accepted: March 20, 2018

Published: April 19, 2018

Reference information:

JCI Insight. 2018;3(8):e97349. <https://doi.org/10.1172/jci.insight.97349>.

varying degrees of hematopoietic and vascular defects (14), probably reflecting the redundant expression pattern of these *Ets* factors in hematopoietic cells and ECs. Distinct from these ETS factors, *Etv2* (also known as *Er71* and *Etsrp*) is transiently expressed in the primitive streak, yolk sac blood islands, and large vessels of the dorsal aorta during embryogenesis (15–18). *Etv2*-deficient mice display a complete block in blood and blood vessel formation, demonstrating that ETV2 performs a nonredundant and indispensable function in hematopoietic and vessel development. We recently established that ETV2 activates other *Ets* transcription factors in hematopoietic cell and EC lineage development. Moreover, the hematopoietic and EC program induced by ETV2 is maintained by other ETS factors through an ETS switching mechanism in the face of transient *Etv2* expression (19). Importantly, ETV2 function is evolutionary conserved, as mouse or human *Etv2* can induce hematopoietic and vascular development in zebrafish (20). Notably, ECs can be efficiently generated from mouse and human pluripotent stem cells by enforced *Etv2* expression (17, 21, 22). Moreover, *Etv2* can efficiently reprogram somatic cells to ECs (23–26). These studies have established that *Etv2* is necessary and sufficient for EC generation and function.

While *Etv2* function in the developmental context has been extensively investigated (27, 28), studies on this gene in adults are greatly lacking. Previous studies have established that *Etv2* expression becomes silent once hematopoietic cells and ECs have been generated (17, 29–31). However, it becomes reactivated upon injury and is required for hematopoietic and EC regeneration (32, 33). Since developmental programs are often reactivated in pathological conditions and regulate disease progression, we investigated whether the developmentally critical factor *Etv2* is also reactivated in tumor endothelium and is required for tumor angiogenesis. Our data demonstrated that ETV2 is expressed in human and mouse tumor-associated ECs (TAECs). Endothelial *Etv2* is required for tumor angiogenesis. While *Etv2*-deficient TAECs failed to elevate *Fli1* expression and had a defective response to VEGF, they displayed a normal response to FGF. We identified ROS, which were readily elevated in TAECs, as upstream activators of *Etv2* expression. Systemic *Etv2* siRNA nanoparticle delivery effectively inhibited tumor growth and angiogenesis without cardiovascular side effects. Our results indicate that *Etv2* is a marker for TAECs and that targeting *Etv2* maybe a valid choice for blocking tumor angiogenesis.

Results

Etv2 is upregulated in both human and mouse TAECs. As *Etv2* was required for ECs undergoing active angiogenesis (32), we assessed whether *Etv2* also plays a role in tumor angiogenesis. We first examined human malignant and matched nonmalignant specimens from lung, breast, prostate, and colon cancer patients and found that ETV2 was expressed in the tumor vessels but not in the nonmalignant tissues (Figure 1, A–D). We next determined the kinetics of *Etv2* expression in a mouse tumor transplantation model using Lewis lung carcinoma–GFP (LLC–GFP) tumor cells. In this tumor transplantation model, palpable tumor mass is detected by days 4–5 after tumor cell transplantation (ptt), followed by robust tumor growth. *Etv2* expression was detected in the tumor mass from day 4 ptt, with its expression highly upregulated from day 10 ptt (Supplemental Figure 1A; supplemental material available online with this article; <https://doi.org/10.1172/jci.insight.97349DS1>). We analyzed the FACS-sorted ECs from the tumor by quantitative real-time reverse-transcription PCR (qRT-PCR) and found that TAECs expressed high levels of *Etv2* (Figure 1E). Immunofluorescence of the mouse tumor sections also revealed that ETV2 was present primarily in TAECs (Figure 1F). Intriguingly, ETV2 was also detected in some, not all, hematopoietic cells (Supplemental Figure 1B). It is notable that ETV2 was present in both nuclei and perinuclear spaces (Supplemental Figure 1, C and D). Since tumor cells and ECs in nonmalignant vessels do not express *Etv2* (Figure 1, A–D, and Supplemental Figure 1A), we conclude that *Etv2* expression is induced in TAECs.

Endothelial Etv2 is required for optimal tumor growth. To determine whether the reactivation of *Etv2* expression in TAECs reflected its functional requirement in tumor angiogenesis, we transplanted LLC–GFP cells into *Tie2-Cre;Etv2^{fl/fl}* (*Tie2-Cre;Etv2* conditional KO [CKO], lacks *Etv2* in ECs and hematopoietic cells) and *VECadherin-Cre;Etv2^{fl/fl}* (*VEC-Cre;Etv2* CKO, lacks *Etv2* in ECs) mice (32, 33). Efficient deletion of *Etv2* was confirmed in ECs of both models (Supplemental Figure 2A). *Etv2* expression in TAECs and tumor growth were significantly reduced in the *Etv2* CKO mice (*Tie2-Cre* or *VEC-Cre*) compared with littermate control wild-type mice (Figure 2, A and B, and Supplemental Figure 2B). Similar tumor growth defects were observed with another well-studied B16 melanoma tumor model (Supplemental Figure 2C). Capillary densities within tumors were also significantly decreased (Figure 2C), suggesting that endothelial *Etv2* is required for efficient tumor angiogenesis and growth. *Ets* transcription factors are redundantly

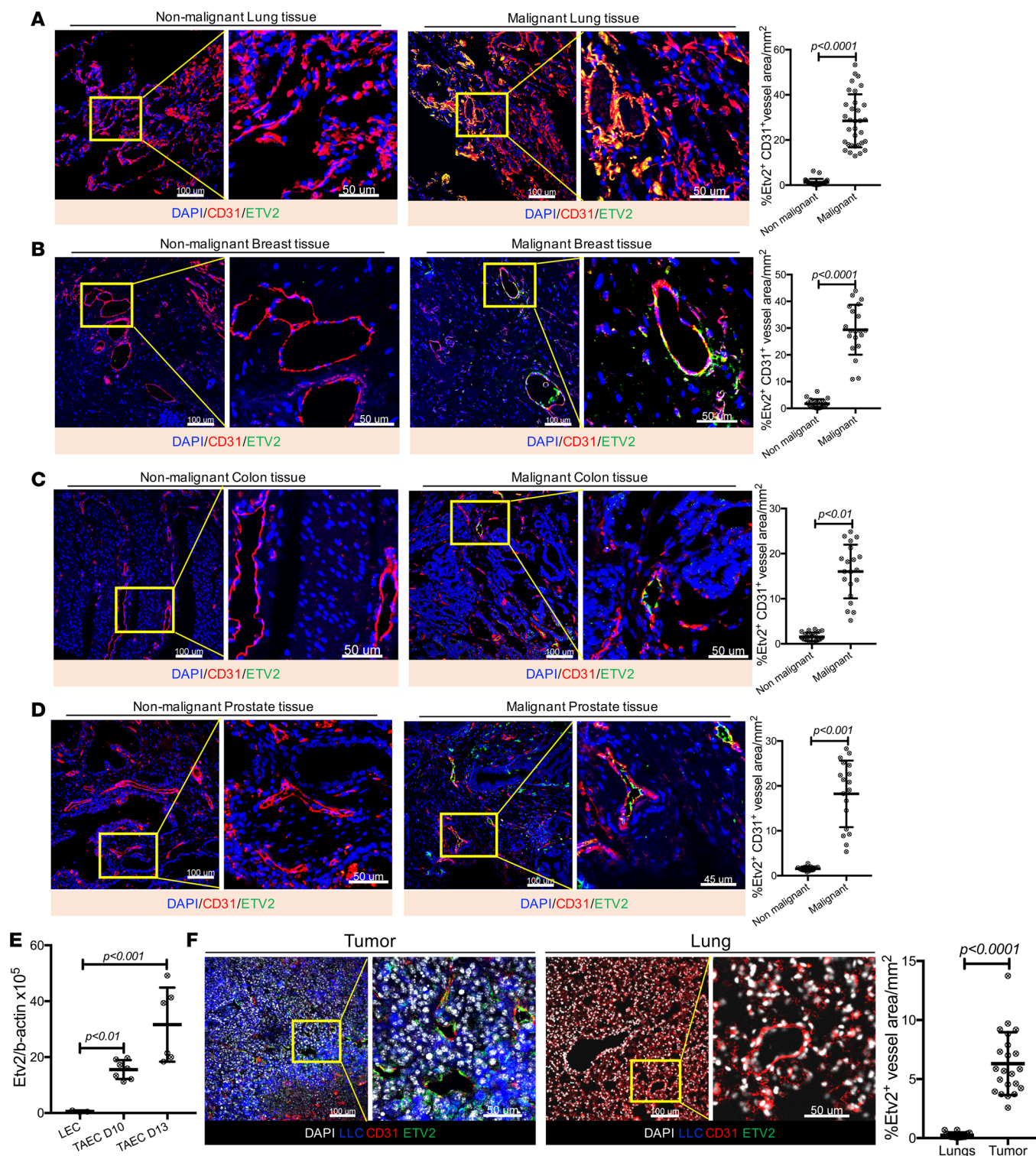


Figure 1. *Etv2* is upregulated in tumor endothelial cells. (A–D), Representative images for ETV2 (green) and CD31 (red) immunofluorescence of malignant and matched nonmalignant specimens from (A) lung, (B) breast, (C) colon, and (D) prostate cancer patients. DAPI (blue) is used to counterstain nuclei. Associated graphs show the quantification of ETV2-expressing CD31⁺ vessels in malignant versus nonmalignant tissues. Every cancer type had malignant and nonmalignant tissue specimen pairs collected from at least 3 patients; at least 3 sections from each patient were subjected to immunofluorescence. (E) qRT-PCR analysis of *Etv2* expression in CD31⁺CD45[−] endothelial cells obtained from lung (LEC) and tumor (TAEC), 10 and 13 days after tumor cell transplantation ($n = 3$ LEC, 7 TAEC day 10, and 6 TAEC day 13). (F) Representative images for ETV2 (green) and CD31 (red) immunofluorescence of mouse tumor and lung sections, processed after 20 days of tumor transplantation. LLC-GFP cells (blue) and nuclei counterstained with DAPI (gray) are shown ($n = 15$ or more/group). Scale bars: 100 μm ; 50 μm (higher-magnification images). Data are presented as mean with standard deviation for all measurements. Statistical significance was analyzed by either a 2-tailed Student's *t* test (A–D and F) or 1-way ANOVA with Dunnett's multiple-comparison test (E).

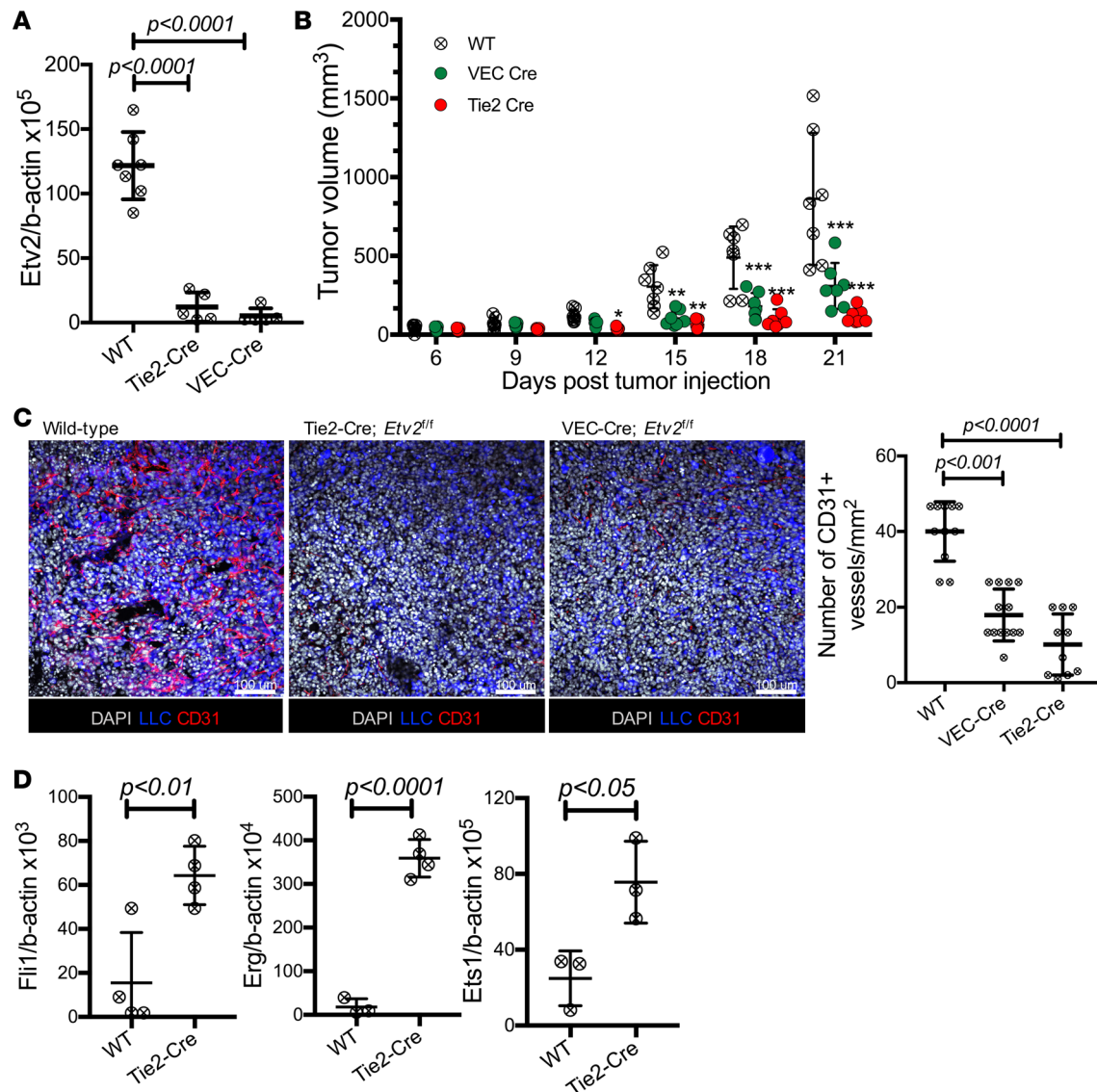


Figure 2. Endothelial *Etv2* is required for tumor growth and angiogenesis. (A) qRT-PCR analysis of *Etv2* expression in TAEs of wild-type control (n = 5), *Tie2-Cre;Etv2* CKO (n = 7), and *VEC-Cre;Etv2* CKO (n = 7) mice on day 13 after tumor cell transplantation (ptt). (B) Tumor growth in control, *VEC-Cre;Etv2*, and *Tie2-Cre;Etv2*-CKO mice. Tumor volume was measured on days 6, 9, 12, 15, 18, and 21 ptt (n = 7/group) (* $P < 0.05$, ** $P < 0.01$, *** $P < 0.001$). (C) Representative images for CD31 (red) immunofluorescence and quantification of CD31⁺ vessel density of the tumor sections (n = at least 10/group). LLC-GFP cells (blue) and nuclei counterstained with DAPI (gray) are shown. Scale bars: 100 μ m. Tumors were harvested from littermate control (wild-type), *Tie2-Cre;Etv2* CKO, and *VEC-Cre;Etv2* CKO mice on day 21 ptt. (D) qRT-PCR analysis of *Fli1*, *Erg*, and *Ets1* expression in TAEs of littermate control (WT) and *Tie2-Cre;Etv2*-CKO mice on day 15 ptt (n = 4/group). Data are presented as mean with standard deviation for all measurements. Statistical significance was analyzed by either a 2-tailed Student's *t* test (D), 1-way ANOVA with Dunnett's multiple-comparison test (A and C), or 2-way repeated-measures ANOVA with Tukey's multiple-comparison test (B).

expressed in ECs (12, 13). Notably, *Etv2*-deficient TAEs had elevated expression of *Fli1*, *Erg*, and *Ets1* (Figure 2D), suggesting that there might be possible compensatory roles played by the other *Ets* factors in the absence of the *Etv2*, which could have contributed to the residual tumor growth in the *Etv2*-CKO mice. Hematopoietic *Etv2* also appears to contribute to tumor progression, as *Tie2-Cre;Etv2*-CKO mice displayed more severe reduction in tumor growth than the *VEC-Cre;Etv2*-CKO mice. Indeed, *Vav-Cre;Etv2*^{fl/fl} (*Vav-Cre;Etv2* CKO, *Etv2* deletion in hematopoietic cells) mice showed a mild, but significant, reduction in tumor growth and angiogenesis compared with littermate control mice (Supplemental Figure 2, D and E). Importantly, tumor-associated hematopoietic cells in the *Vav-Cre;Etv2* mice had diminished expressions of angiogenic growth factors *Vegf-a*, *Vegf-b*, *Fgf-2*, *Igf-1*, and *Igf-2* (Supplemental Figure 2F), which could explain why mice with deleted hematopoietic *Etv2* displayed defective tumor angiogenesis.

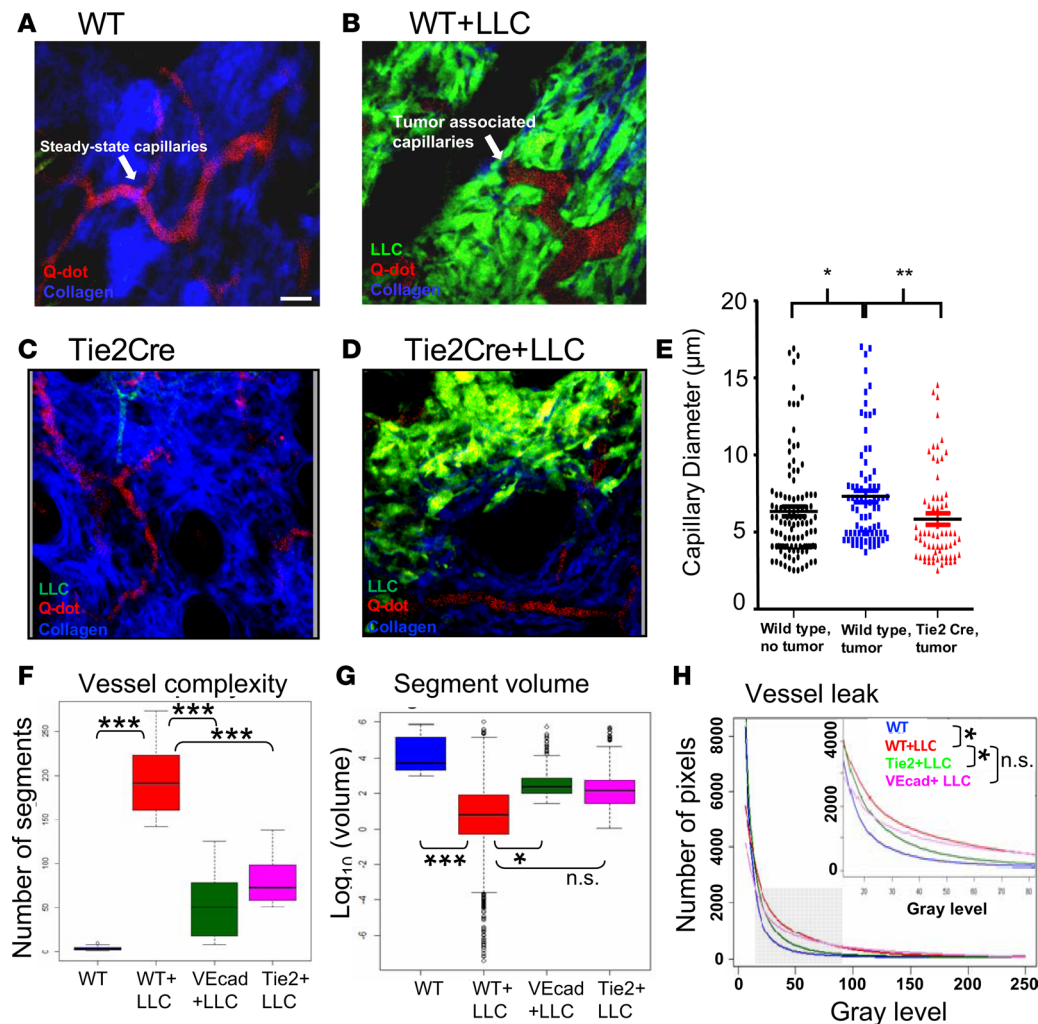


Figure 3. In vivo assessment of tumor-associated vessel morphology in *Etv2*-CKO mice. 2PM was performed on anesthetized mice to assess vessel morphology in (A and B) wild-type (WT+LLC) and (C and D) *Tie2-Cre*;*Etv2*-CKO (*Tie2*Cre, *Tie2*Cre+LLC) tumor-bearing mice. Images show that LLC tumor (green) is associated with vascular remodeling and the growth of larger tortuous and irregular capillaries (red) and collagen fibers (second harmonic generation signal, blue). Scale bar: 10 μm . (E) Average capillary diameter in steady-state vessels (WT, black dots) and tumor-associated capillaries in littermate control (WT+LLC, blue dots) and CKO (*Tie2*-Cre+LLC, red dots) mice ($n = 5/\text{group}$; at least 10 capillaries were measured per mouse; $*P < 0.05$, $**P < 0.01$). (F) Vessel complexity was analyzed by generating 3D contour surfaces to identify vessels (Supplemental Video 1) and counting the number of discrete vessel segments in each image ($n = \text{at least } 8/\text{group}$; $***P < 0.001$). (G) Vessel volume is plotted for each group, with the middle line in each bar representing the average volume of vessel segments in an image ($n = 5/\text{group}$; $*P < 0.05$, $***P < 0.001$). (H) A plot of average pixel intensity counts for each group fitted to an exponential probability distribution function using maximum likelihood estimation methods to extract the rate of decay for each group ($n = 4/\text{group}$; $*P < 0.05$). Data are presented as mean with standard deviation for all measurements. Statistical significance was analyzed by 1-way ANOVA with Dunnett's multiple-comparison test (E–G) or 2-way repeated-measures ANOVA with Tukey's multiple-comparison test (H).

2PM analysis reveals that *Etv2*-deficient tumor vessels are similar to steady-state vessels. We examined the effect of *Etv2* loss on the morphology and function of the tumor-associated vasculature in vivo using 2-photon microscopy (2PM). 2PM induces less photodamage than confocal microscopy and has higher spatiotemporal resolution (~ 30 fps and $< 0.5 \mu\text{m}/\text{pixel}$) than magnetic resonance imaging, computed tomography, and positron emission tomography (34). To assess *Etv2*-deficient tumor vessels, we transplanted LLC-GFP cells into the ear pinna of *Etv2*-CKO mice, performed in vivo 2PM, and assessed vessel morphology. In wild-type mice, tumor-associated vessels, compared with steady-state vessels, had distinct tortuous morphology, larger diameter, and functional abnormalities, including sluggish blood flow and increased leakiness, as previously observed (35). However, tumor-associated vessels in *Etv2*-CKO mice resembled those of steady-state vessels (Figure 3, A–E, and Supplemental Video 1). It is important to note that the vessels of the control and *Etv2*-CKO mice were similar in steady states (Supplemental Figure 3A). Next, to better assess tumor-associated changes to the vascular network, we created 3D contour surfaces

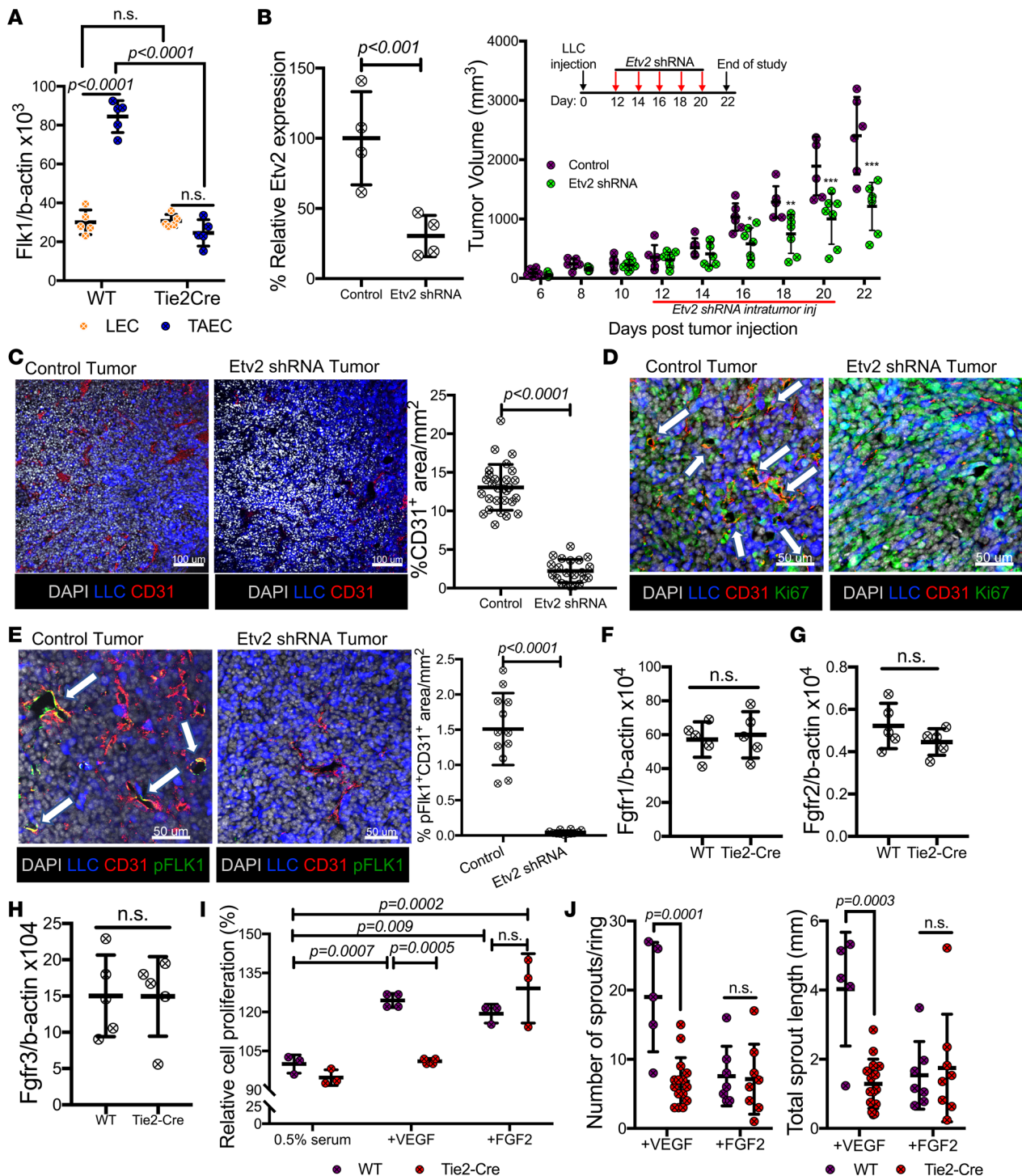


Figure 4. *Etv2* regulates tumor endothelial cell-specific *Flk1*. (A) qRT-PCR analysis of *Flk1* expression in lung ECs (LECs) and tumor ECs (TAECs) obtained from littermate control (WT) and *Tie2-Cre*; *Etv2*-CKO mice on day 15 ptt ($n = 5$ /group). (B) qRT-PCR analysis of *Etv2* expression in CD31⁺CD45⁻ ECs obtained from tumors of *Gfp* shRNA- (control) and *Etv2* shRNA-treated mice on day 15 ptt. Data are shown as percentage relative expression of control shRNA group ($n = 4$ /group). Tumor growth in *Gfp* shRNA- (control) and *Etv2* shRNA-treated mice ($n = 6$ control, 7 *Etv2* shRNA; $*P < 0.05$, $**P < 0.01$, $***P < 0.001$). (C-E) Representative images and quantification for (C) CD31 (red) ($n = 25$ /group), (D) Ki67 (green), and (E) pFLK1 (Y951) (green) ($n = 12$ /group) immunofluorescence of tumor sections. LLC-GFP cells (blue) and nuclei counterstained with DAPI (gray) are shown. White arrows indicate the expression of Ki67 (D) and pFLK1 (E) in tumor vessels. Scale bars: 100 μm (C); 50 μm (D and E). (F-H) *Fgfr1*, *Fgfr2*, and *Fgfr3* expression in TAECs of littermate control (WT) and *Tie2-Cre*; *Etv2*-CKO mice on day 15 ptt ($n = 5$ /group). (I) Lung ECs (LEC) of littermate control (WT) or *Tie2-Cre*; *Etv2*-CKO mice were sorted and subjected to a cell proliferation assay. Data are shown as a percentage of control (0.5% serum) ($n = 4$ /group). (J) Aortas from the controls (WT) and *Tie2-Cre*; *Etv2*-CKO mice were subjected to an angiogenic sprouting assay, and the mean sprout number and length were measured 8 days later ($n = 5$ or more/group). Data are presented as mean \pm standard deviation for all measurements. Statistical significance was analyzed by either a 2-tailed Student's *t* test (B, left, C, and E-H), or 2-way ANOVA with Sidak's (A, I, and J) or 2-way repeated-measures ANOVA with Tukey's (B, right) multiple-comparison test.

of all vessels in the images, including capillaries and larger venules and arterioles, to quantify the number of discontinuous vessel segments, as a measure of network complexity and the volume of each vessel segment. Tumors growing in wild-type mice showed increased vessel complexity and decreased average vessel segment volume, compared with steady-state vessels, suggesting the expansion of tumor capillaries via angiogenesis (Figure 3, F and G, and Supplemental Figure 3, B and C). However, tumors growing in *Etv2*-CKO mice had similar vessel complexity and average vessel segment volume compared with steady-state vessels (Figure 3, F and G, and Supplemental Figure 3, B and C), suggesting that new capillary formation requires *Etv2*. Finally, we evaluated vessel integrity in the tumor-bearing mice by plotting the average pixel intensity counts and identified extravascular leakage by an increase in intermediate pixel intensity counts in the red channel (10–80 gray levels, zoomed inset) and, when fitted to an exponential curve, a lower rate of decay. Tumor-associated vessels were significantly leakier than steady-state vessels in wild-type mice, whereas, the leakage was significantly reduced in *Etv2*-CKO mice (Figure 3H and Supplemental Figure 3D). We additionally performed a kymograph analysis on representative images to further validate vessel integrity of the *Etv2*-deficient tumor vessels. While tumor-associated vessels in wild-type mice showed noticeable broadening of the intensity profile and higher extravascular dextran signal, tumor-associated vessels in the *Etv2*-CKO mice had sharp well-delineated vessel edges and little extravascular dextran signal (Supplemental Figure 3E and Supplemental Video 2). These data suggested that *Etv2*-deficient tumor vessels, in the absence of new angiogenesis, remained similar to steady states.

ETV2 regulates VEGF response in TAECs. VEGF is crucial for tumor angiogenesis. Previous studies have established positive feedback regulation between *Etv2* and *Flk1* expression in development (19, 36). We therefore determined if *Etv2* deficiency might lead to defects in VEGF responsiveness in TAECs. *Flk1* expression was similar in steady-state ECs from both wild-type and *Etv2*-CKO mice. However, while *Flk1* expression was readily upregulated in TAECs in the wild-type mice, *Flk1* expression in the *Etv2*-deficient TAECs remained similar to that of steady-state ECs (Figure 4A). As expected, intratumoral lentiviral *Etv2* shRNA injection significantly inhibited *Etv2* expression in the TAECs, reduced TAEC proliferation, and restricted tumor growth and angiogenesis (Figure 4, B–D, and Supplemental Figure 4A). Importantly, tumor-associated vessels, but not the nontumor vessels, had reduced activating phosphorylation of FLK1 (37) after *Etv2* shRNA injection, suggesting that *Etv2* regulates *Flk1* expression and activation in a TAEC-specific manner (Figure 4E and Supplemental Figure 4C). Notably, *Etv2* deficiency does not appear to disturb FGF signaling, as expression of *Fgfr1*, *Fgfr2*, and *Fgfr3* in both TAECs and nontumor ECs was similar in wild-type and *Etv2*-CKO mice (Figure 4, F–H, and Supplemental Figure 4C). Notably, *Etv2*-deficient lung ECs showed reduced proliferation to VEGF stimulation, but not FGF2, compared with controls (Figure 4I). Additionally, *Etv2*-deficient aortas displayed diminished VEGF-induced, but not FGF2-induced, sprouting in aortic ring assay (38) (Figure 4J and Supplemental Figure 4D). Moreover, lenti-*Etv2* shRNA-infected yolk sac-derived endothelial (YSE) cells displayed defective tube formation in response to VEGF, but not FGF2, compared with wild-type YSE cells (Supplemental Figure 4E). Taken together, these results indicate that *Etv2* regulates VEGF signaling in TAECs.

ROS activate Etv2 expression. Developmental angiogenesis is controlled by changes in O₂ tension (39, 40). Moreover, oxidative stress underlies many of the characteristics of cancer (41). Particularly, ROS, increased in response to ischemia, hypoxia, inflammation, or growth factors, such as VEGF and angiopoietin-1, play a critical role in angiogenesis (42). Thus, we determined if ROS could trigger *Etv2* expression in TAECs. Higher ROS levels were detected in TAECs compared with steady-state lung or hind limb ECs (Figure 5A). Remarkably, *Etv2*, *Flk1*, or *Vegf* expression was greatly upregulated by H₂O₂ or L-buthionine-S,R-sulfoximine (BSO) in YSE cells (Figure 5, B–D, and Supplemental Figure 5, A–C). ROS also increased the expression of other *Ets* factors, including *Ets1*, *Ets2*, and *Elk3* in YSE cells (Figure 5E). Additionally, 24-hour hypoxia followed by 24-hour reoxygenation, which mimics the pathophysiological ischemia/reperfusion condition (43, 44), or even 24-hour hypoxic exposure alone increased ROS and upregulated *Etv2* expression in YSE cells; ROS scavengers inhibited this *Etv2* expression (Figure 5F and Supplemental Figure 5, D and E). Remarkably, systemic ROS scavenger treatment reduced *Etv2* expression in the TAECs and reduced tumor growth in vivo (Figure 5G).

Etv2 siRNA nanoparticles effectively inhibit tumor angiogenesis and tumor growth. As *Etv2* expression is silent in steady-state ECs, we speculated that a systemic anti-*Etv2* strategy could effectively block *Etv2* expression in TAECs, without causing any potential vascular adverse effects. To test this idea, we first determined if the *Etv2* shRNA used was specific for inhibiting *Etv2* but not other *Ets* factors. Particularly, YSE cells infected with *Etv2* shRNA, upon H₂O₂ treatment, greatly suppressed *Etv2* upregulation, whereas,

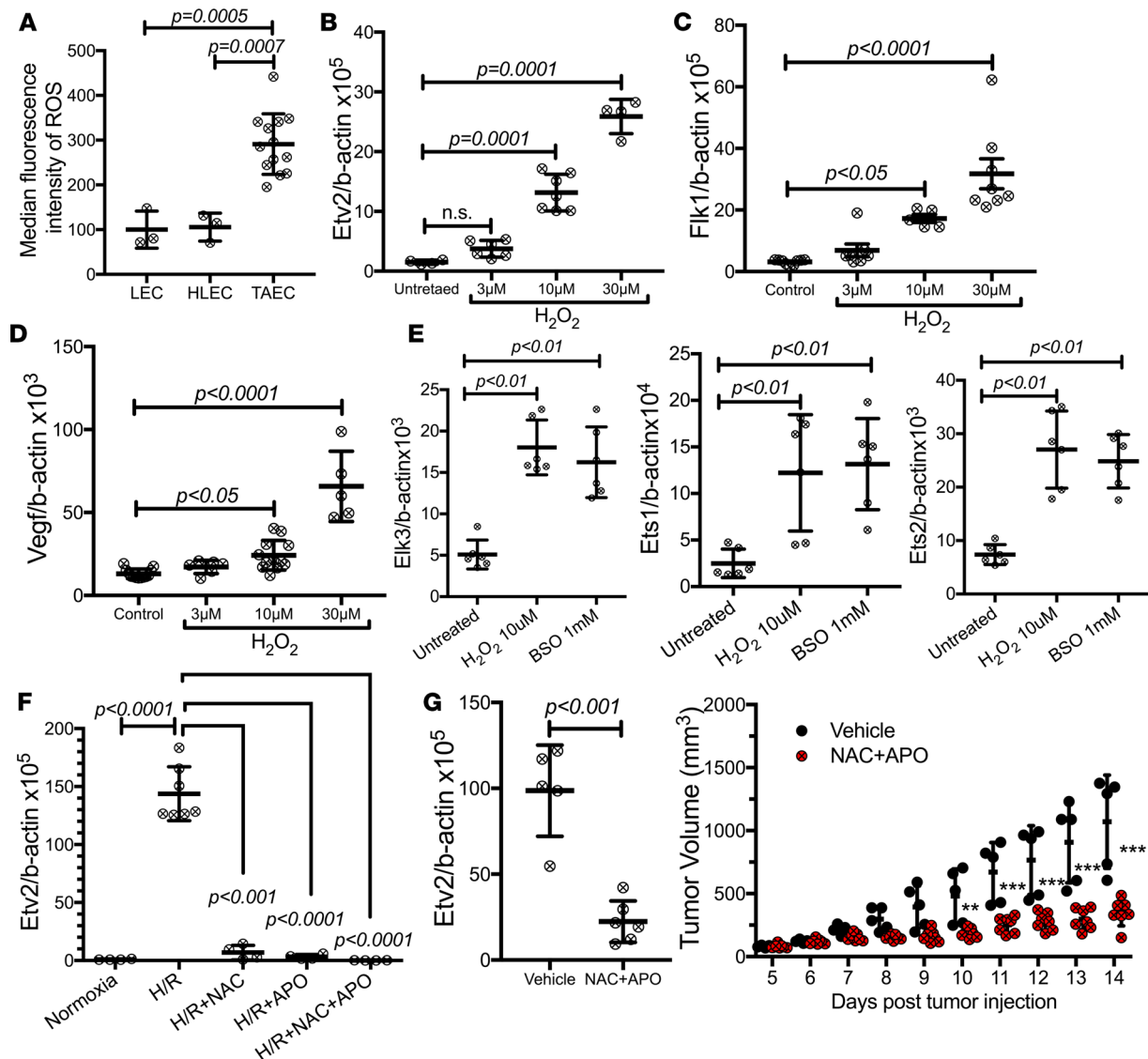


Figure 5. ROS trigger *Etv2* expression. (A) ROS levels in ECs obtained from lung (LEC), hind limb tissue (HLEC), or tumor (TAEC) ($n = 3$ or more/group). (B–E) qRT-PCR analysis of expression of (B) *Etv2*, (C) *Flk1*, (D) *Vegf*, and (E) *Ets* factors *Elk3*, *Ets1*, and *Ets2* in H_2O_2 -treated yolk sac-derived endothelial (YSE) cells ($n = 4$ or more/group). (F) *Etv2* expression in YSE cells underwent with 24-hour hypoxia (<1% oxygen), followed by 24-hour normoxia (H/R) with/without ROS scavengers N-Acetyl cysteine (NAC; 5 mM) and apocynin (APO; 100 mM) ($n = 4$ or more/group). (G) *Etv2* expression in TAECs isolated from untreated and NAC+APO-treated mice on day 14 ptt. Tumor growth in untreated and NAC+APO-treated mice. Mice were treated with daily i.p. injections of vehicle or a combination of NAC (200 mg/kg) and APO (50 mg/kg) for 10 days, from day 4 to day 13 ptt ($n = 5$ vehicle, 7 NAC+APO) (** $P < 0.01$, *** $P < 0.001$). Data are presented as mean with standard deviation for all measurements. Statistical significance was analyzed by either a 2-tailed Student's *t* test (G, left), 1-way ANOVA with Dunnett's (B–F) or Bonferroni's multiple-comparison test (A), or 2-way repeated-measures ANOVA with Sidak's multiple comparison test (G, right).

upregulation of other *Ets* genes, including *Fli1*, *Ets1*, *Ets2*, and *Elk3*, was not affected, establishing the selectivity of *Etv2* shRNA in inhibiting *Etv2* (Supplemental Figure 6A). Next, we formulated nanoparticles composed of *Etv2* siRNA (using the same sequence as the shRNA) and a self-assembling peptide carrier (“p5RHH”), which has been previously described (45) and used to deliver p65NF- κ B siRNA to inhibit experimental arthritis (46, 47). The p5RHH-siRNA nanoparticles (~55-nm diameter) protect the siRNA from serum deactivation, while avoiding reticuloendothelial system uptake and deliver functional oligonucleotides to inflammatory targets (45, 47, 48). We injected *Etv2* siRNA peptide nanoparticles through tail vein into the tumor-bearing mice, from days 9–17 ptt, 5 times, every other day. The nanoparticles reached the tumor effectively within 24 hours of the injection (Figure 6, A and B). *Etv2* expression in TAECs and tumor growth and tumor angiogenesis were dramatically reduced, starting from 2 days

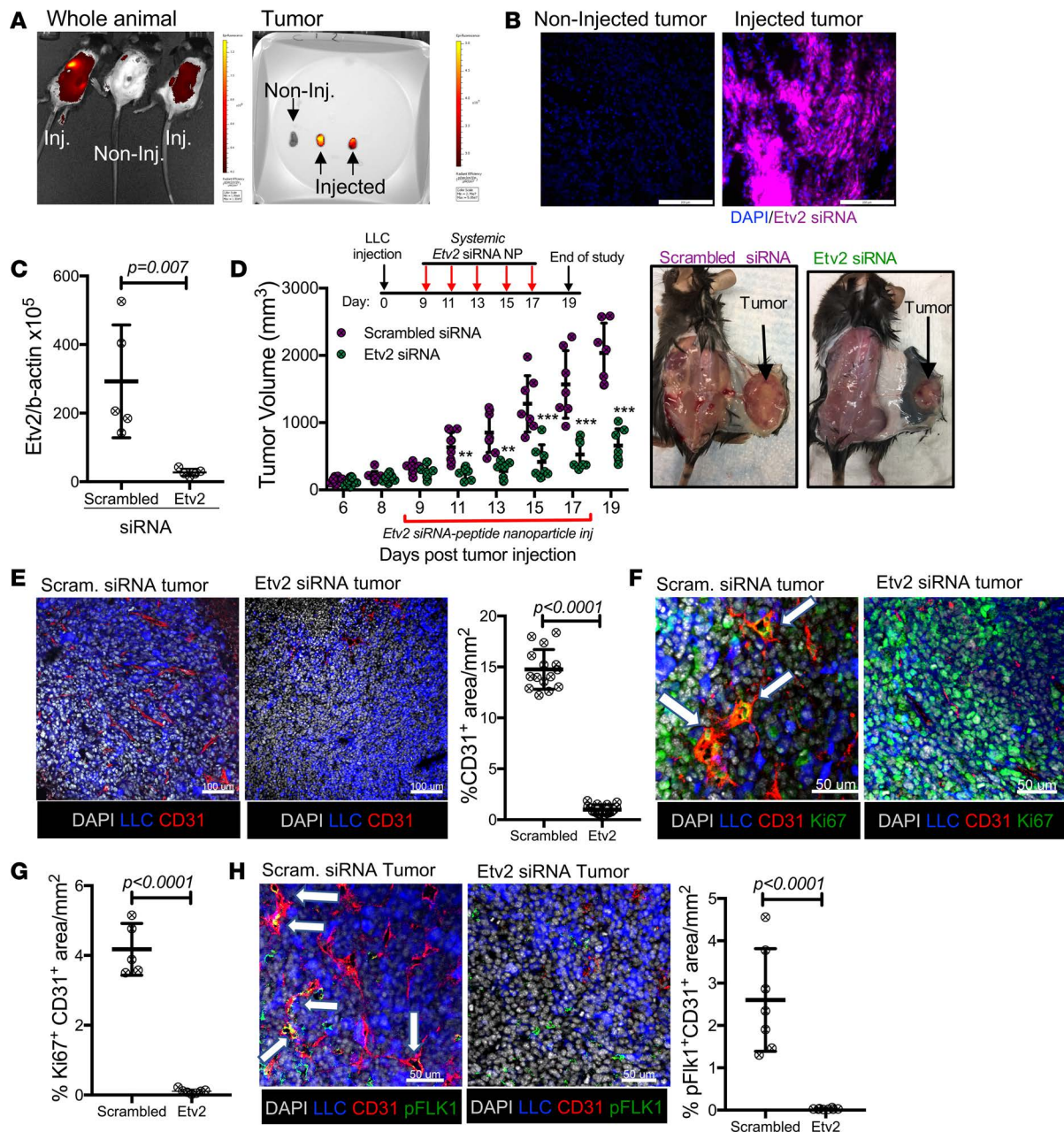


Figure 6. Systemic treatment with *Etv2* siRNA peptide nanoparticle restricts tumor growth and tumor angiogenesis. (A) IVIS imaging of whole-body and isolated tumor at 24 hours after the injection of Quasar705-tagged *Etv2* siRNA peptide nanoparticles through the tail vein. (B) Representative images from a fluorescence microscope for Quasar705-tagged *Etv2* siRNA nanoparticles (purple) in the tumor sections at 24 hours after the injection. (C) qRT-PCR analysis of *Etv2* expression in TAEs isolated from scrambled and *Etv2* siRNA nanoparticle-treated mice on day 15 ptt ($n = 5$ /group). (D) Tumor growth in the scrambled and *Etv2* siRNA nanoparticle-treated mice. Scrambled and *Etv2* siRNA nanoparticles were injected through the tail veins of the mice on days 9, 11, 13, 15, and 17 ptt ($n = 8$ scrambled, 10 *Etv2* siRNA; $**P < 0.01$, $***P < 0.001$). Representative images of mice with tumor from the treatment and control groups. (E–H) Representative images and quantification for (E) CD31 (red), (F and G) Ki67 (green), and (H) pFLK1 (Y951) (green) immunofluorescence of the tumor sections ($n = 7$ or more/group). LLC-GFP cells (blue) and nuclei counterstained with DAPI (gray) are shown. White arrows indicate the expression of (F) Ki67 and (H) pFLK1 in tumor vessels. Scale bars: 200 μm (B); 100 μm (E); 50 μm (F and H). Data are presented as mean with standard deviation for all measurements. Statistical significance was analyzed by either a 2-tailed Student's *t* test (C, E, G, and H) or 2-way repeated-measures ANOVA with Sidak's multiple-comparison test (D).

after the first nanoparticle injection (Figure 6, C–E). An extended treatment scheme (days 5–23 ptt, 10 times, every other day) continuously attenuated the tumor progression until the end of the study on day 29 ptt (Supplemental Figure 6B). Importantly, proliferation and FLK1 activation were inhibited in the TAEs of *Etv2* siRNA peptide nanoparticle-treated mice (Figure 6, F–H).

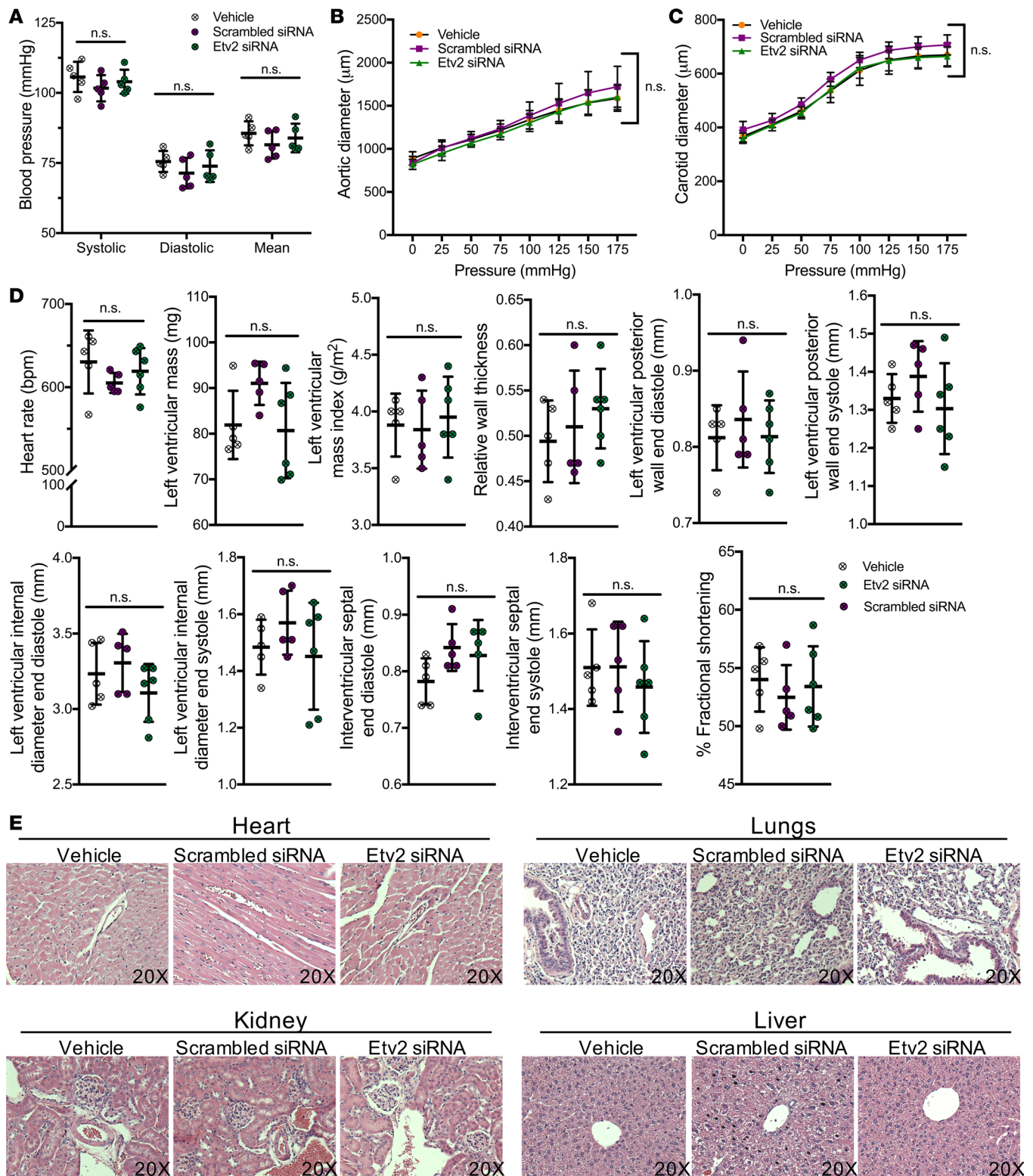


Figure 7. *Etv2* siRNA peptide nanoparticle treatment do not adversely affect cardiovascular system and function. Wild-type mice were intravenously treated with vehicle, scrambled siRNA, or *Etv2* siRNA nanoparticles for 5 times, every other day. **(A)** Systolic, diastolic, and mean blood pressure measurements in control (vehicle and scrambled siRNA nanoparticles) or *Etv2* siRNA nanoparticle-treated mice ($n = 5/\text{group}$). **(B and C)** Pressure diameter measurements of the **(B)** ascending aorta and **(C)** carotid artery over a range of pressures from 0 to 175 mmHg ($n = 5/\text{group}$). **(D)** Heart rate, left ventricular mass, left ventricular mass index, relative wall thickness, left ventricular posterior wall end diastole, left ventricular posterior wall end systole, left ventricular internal diameter end diastole, left ventricular internal diameter end systole, intraventricular septal end diastole, intraventricular septal end systole, and percentage fractional shortening in control (vehicle and scrambled siRNA nanoparticles) or *Etv2* siRNA nanoparticle-treated mice, measured by echocardiogram analysis ($n = 5/\text{group}$). **(E)** Representative images of H&E-stained sections of heart, lungs, kidney, and

liver harvested from control (vehicle and scrambled siRNA nanoparticles) or *Etv2* siRNA nanoparticle-treated mice (original magnification, $\times 20$). Data are presented as mean with standard deviation for all measurements. Statistical significance was analyzed by either 1-way ANOVA with Bonferroni's multiple-comparison test (**A** and **D**) or 2-way repeated-measures ANOVA with Tukey's multiple-comparison test (**B** and **C**).

Etv2 siRNA nanoparticles do not elicit cardiovascular side effects. Antiangiogenic therapies, such as anti-VEGF treatments, often have systemic and vascular side effects that complicate and, at times, diminish the outcome of the treatment (4), as commonly targeted VEGF is also required for vascular homeostasis (6, 7). Prior work has shown that the p5RHH-based nanoparticles exert no untoward immune stimulation, complement activation, and appreciable toxicity toward blood components or major organs after multiple systemic doses (46). To assess the safety profile of our employed *Etv2* siRNA peptide nanoparticle treatment in cardiovascular systems, we injected the *Etv2* siRNA nanoparticles into wild-type mice (5 times, every other day). Following the treatment, systolic, diastolic, and mean blood pressures (49) were similar in the treated and control groups (Figure 7A). Pressure-diameter measurements, commonly used to evaluate vessel mechanics (50), showed that the compliances of the ascending aorta and carotid artery were equivalent for the treated and control groups (Figure 7, B and C). Clinically relevant cardiac functions, including left ventricular interior and posterior wall diameters following systole and diastole, relative wall thickness, mass index, and fractional shortening, were normal and equivalent across treated and control groups in echocardiogram analysis (Figure 7D). Additionally, histological inspection of the H&E-stained samples of major vascular organs revealed no pathological abnormalities (Figure 7E). To better understand the pharmacokinetics of the *Etv2* siRNA nanoparticles, we injected a separate group of mice with a single dose of the siRNA nanoparticles and performed high-performance liquid chromatography (HPLC) on the blood samples. After the i.v. administration of 0.5 nmol of the siRNA nanoparticles to each wild-type mouse, the siRNA nanoparticle plasma concentrations were still detectable at 3 hours (Supplemental Figure 7). The mean elimination half-life of siRNA nanoparticles was calculated as 43 ± 27 minutes (Supplemental Figure 7). Together, these data suggest that *Etv2* siRNA nanoparticle-based drugs can be considered in the future to inhibit tumor angiogenesis without any obvious cardiovascular side effects.

Discussion

ETS factors have been found to play a role in tumorigenesis (51). However, most studies are restricted to tumor cell-intrinsic effects. Thus, despite their prominent roles in developmental angiogenesis (13, 27, 28), there have been limited studies on ETS factors in tumor angiogenesis (52, 53). Herein, we show that while *Etv2* expression is silent in adult steady-state ECs, it is reactivated in TAECs in both humans and mice. Importantly, *Etv2*-deficient mice supported reduced tumor growth and angiogenesis. *Etv2*-deficient tumor vessels remained similar to physiological steady-state vessels. Previous studies have established that tumor angiogenesis is sensitive to oxygen tension. Particularly, the tumor environment is known to be hypoxic, and hypoxia induces angiogenesis through activating HIF1 α and VEGF production (40, 42). Importantly, developmental angiogenesis is also regulated by oxygen tension (39, 54). Our data suggest that *Etv2* is a redox-sensitive transcription factor, which is induced by ROS in TAECs. We show that ROS levels were elevated in TAECs. ROS scavenging inhibited *Etv2* upregulation in TAECs. These studies enforce the notion that the genetic programs regulating developmental processes are recapitulated in the pathologic disease processes.

Recent studies have established that the interplay among ETV2, VEGF, and its receptor VEGFR2 (also known as FLK1) is essential for hematopoietic and vascular development (19, 36). We have recently demonstrated that the VEGF/FLK1 pathway is also required downstream of ETV2 in EC regeneration (32). As in development and EC regeneration, the VEGF/FLK1 pathway seems to be the target of ETV2 in tumor angiogenesis. In particular, while *Flk1* expression levels were elevated in wild-type TAECs, compared with steady-state vessels, *Flk1* expression levels in *Etv2*-deficient TAECs were similar to steady-state vessels. Moreover, *Etv2*-deficient ECs showed decreased endothelial proliferation, tube formation, and sprouting response to VEGF, not FGF, compared with wild-type ECs. Thus, an important implication of our study is that VEGF targeting in TAECs maybe selectively achieved through *Etv2* inhibition. Intriguingly, other *Ets* genes were greatly upregulated in *Etv2*-deficient TAECs. However, upregulation of other *Ets* genes was not apparently sufficient to overcome *Etv2* deficiency in tumor angiogenesis. Potential compensatory mechanisms involving FGF signaling and other *Ets* factors in the residual tumor growth in *Etv2*-deficient mice need to be investigated in the future.

Currently, many RNAi-based drugs, including *Vegf*, *Epha2*, and *Vegfr1*, are in clinical trials, phase I or II (55–57), to inhibit tumor angiogenesis. In the present work, we sought to define the utility of a siRNA delivery approach using nanoparticles targeted to the *Etv2*. The nanoparticle construct is composed of a self-assembling peptide (p5RHH) siRNA complex that serves to protect the siRNA from serum deactivation, while avoiding reticuloendothelial system uptake and delivering functional oligonucleotides to inflammatory targets (45–47). Key features of the complex that promote sequentially coordinated endosomal uptake, endosomal lysis, and siRNA release depend on specific molecular features of the carrier peptide, which is derived through modification of the bee venom peptide melittin (48). Selected amino acid truncations and substitutions mitigate the undesirable pore-forming capacity of peptide, yet retain its ability to condense siRNA and facilitate endosomal escape, as previously reported (58). A simple mixing procedure of only 10 minutes yields a complex that is small enough (~55 nm) to passively diffuse rapidly into inflamed tissues, where it is retained, yet it avoids hepatic sequestration (48). Using a mouse tumor transplantation model, we demonstrated that systemic *Etv2* siRNA-p5RHH nanoparticle delivery can effectively inhibit tumor angiogenesis, without eliciting any cardiovascular side effects. Future investigations on p5RHH-siRNA nanoparticles as a safe and effective clinical tool instead of viral vectors for delivering siRNA are warranted. Optimizing anti-*Etv2* strategy and delineating *Ets* factor redundancy and potential compensatory pathways in *Etv2*-deficient TAECs would be critical for improved and selective clinical antiangiogenic interventions. Potentially, combined chemotherapy and/or immunotherapy with *Etv2* blockade, leading to vessel normalization, could be beneficial for future treatment of solid tumors. Moreover, the role of *Etv2* in the proangiogenic function of hematopoietic cells in the tumor microenvironment should also be addressed in the future studies. In summary, we have demonstrated that *Etv2* is, to our knowledge, a novel and critical molecular marker specific for activated ECs and that targeting *Etv2* is a valid approach for inhibiting tumor angiogenesis.

Methods

Mice. *Tie2-Cre;Etv2*-CKO, *VEC-Cre;Etv2*-CKO, and *Vav-Cre;Etv2*-CKO mice were generated as described previously (32, 33). C57BL/6J mice were used as wild-type mice. *Tie2-Cre;Etv2^{fl/fl}* mice were used as *Tie2-Cre;Etv2*-CKO mice. *VECadherin-Cre;Etv2^{fl/fl}* mice were used as *VECadherin-Cre;Etv2*-CKO mice. *Vav-Cre;Etv2^{fl/fl}* mice were used as *Vav-Cre;Etv2*-CKO mice. Littermate subjects were used as controls with the CKO mice. Both male and female mice were used in an equal quantity in any given experiment. The ages of the experimental animals were between 10 and 12 weeks. Animals were randomly distributed into groups when different treatments, such as *Etv2* shRNA or Gfp shRNA treatment, N-acetyl cysteine plus apocynin (NAC+APO) or vehicle treatment, and *Etv2* siRNA or scrambled siRNA nanoparticle treatment, were employed. A group of technicians was in charge of distributing and codifying the experimental animals. The investigators were not aware of the group allocation until the treatment, data collection, and data analysis were done.

Cell lines. LLC-GFP cells were obtained from Alexander S. Krupnick, Washington University in St. Louis (St. Louis, Missouri, USA). B16F10 melanoma cells were purchased from ATCC. YSE cells were obtained from Laurence A. Lasky (Genentech, South San Francisco, California, USA). All cell lines have been tested negative for mycoplasma contamination.

Human tumor samples. Deidentified patient-derived, formalin-fixed and paraffin-embedded (FFPE), malignant and matched nonmalignant breast, lung, prostate, and colon tissue specimens were collected from Tissue Procurement Core (TPC) Siteman Cancer Center at Washington University School of Medicine. TPC performs pathological reviews to determine the malignant versus nonmalignant status of the tissues following standard procedures before disseminating the tissue for downstream applications. According to TPC definition, any section associated with equal to or more than 1 neoplastic cell was considered malignant. However, most of our samples had more than 50% neoplastic cells in any given section. A summary of the pathological review of the tissues that we received and the SOP for TPC Pathology Specimen Review is provided in the supplemental materials (Supplemental Table 2 and Supplemental File 1)

Tumor transplantation studies. LLC-GFP cells were cultured in growth medium consisting of DMEM (Gibco) supplemented with 10% (v/v) FBS, 100 unit/ml penicillin, and 100 µg/ml streptomycin. For tumor transplantation studies, 1 ml of growth factor-reduced Matrigel (catalog 354248; Corning) was mixed with 1 ml tumor cell suspension (2×10^6 /ml in PBS); 100 µl tumor cell–Matrigel mixture was injected into the back of mice subcutaneously. Tumor growth was measured by a digital slide calipers (VWR International)

at indicated days after tumor cell injection. Tumor volume was calculated by the equation, volume = (largest diameter) \times (smallest diameter)² \times 0.5.

Immunofluorescence. FFPE human tissue sections were processed for antigen retrieval using DIVA Decloaker (catalog DV2004, Biocare Medical), blocked using freshly made blocking buffer (3% essentially IgG free BSA, catalog A9085, MilliporeSigma; 0.3% Triton X-100; and Fc blocker, catalog 422301, Biolegend) to prevent nonspecific binding, incubated overnight at 4°C with mouse anti-human CD31 (1:100) (catalog MA5-13188, ThermoFisher Scientific) and rabbit anti-human ETV2 (1:300) (catalog ab181847, Abcam) primary antibodies, and finally visualized with Alexa Fluor 594–labeled goat anti-mouse (1:400) (catalog R37121, ThermoFisher Scientific) and Alexa Fluor 647–labeled goat anti-rabbit (1:500) (catalog A-21245, ThermoFisher Scientific) secondary antibodies for 2 hours at room temperature. Later, the sections were processed to counterstain nuclei with DAPI (catalog D1306, ThermoFisher Scientific), cured with ProLong Diamond Antifade mountant (catalog P36970, ThermoFisher Scientific) for 24 hours, and finally sealed with nail polish for preservation. No primary antibody control, isotype control (Mouse IgG1 Isotype Control, catalog ab91353, Abcam, and Rabbit IgG Isotype Control, catalog ab172730, Abcam), and absorption control (using ETV2 Antibody Blocking Peptide at a 5:1 ratio with employed ETV2 antibody, catalog LS-E910, LifeSpan Biosciences) were used as negative controls for immunofluorescence staining. The stained sections were examined using the Olympus Fluoview 1200 confocal microscope and minimally processed with Imaris (Bitplane) software to prepare the figures. At least 6 pictures from every section were processed using ImageJ software (NIH) to quantify CD31⁺ and ETV2⁺ areas.

In mouse tumor transplantation studies, before harvesting the tumors, the mice underwent transcatheter whole-body perfusion of 10% buffered formalin. Harvested tumors were thin sliced and fixed in 10% buffered formalin for 36 hours, immersed in 30% (w/v) sucrose solution for 48 hours to cryoprotect the tissue, frozen in NEG-50 frozen section medium (catalog 6502, ThermoFisher Scientific) using liquid nitrogen and 2-methylbutane, and sectioned (16- μ m thick) using a Cryostat Cryocut Microtome (Leica, CM1850). Tissue sections were first blocked using freshly made blocking buffer (3% essentially IgG free BSA, catalog A9085, MilliporeSigma; 0.3% Triton X-100; and Fc blocker, catalog 101301, Biolegend) to prevent nonspecific binding; then incubated overnight at 4°C with hamster anti-mouse CD31 (1:400) (catalog MA3105, ThermoFisher Scientific), along with rabbit anti-mouse ETV2 (1:200) (catalog orb156791, Biorbyt) or rabbit anti-mouse pFLK1 (Y951) (1:200) (catalog 4991S, Cell Signaling Technology) or rabbit anti-mouse Ki67 (1:200) (catalog Ab15580, Abcam) primary antibodies; and finally visualized with Alexa Fluor 568–labeled goat anti-hamster (1:500) (catalog A-21112, ThermoFisher Scientific) and Alexa Fluor 647–labeled goat anti-rabbit (1:500) (catalog A-21245, ThermoFisher Scientific) secondary antibodies for 2 hours at room temperature. Later, the sections were processed to counterstain nuclei with DAPI (catalog D1306, ThermoFisher Scientific), cured with ProLong Diamond Antifade mountant (catalog P36970, ThermoFisher Scientific) for 24 hours, and finally sealed with nail polish for preservation. No primary antibody control, isotype control (Armenian Hamster IgG Isotype Control, catalog 14-4888-85, ThermoFisher Scientific, and Rabbit IgG Isotype Control, catalog ab172730, Abcam), and absorption control (using ETV2 Antibody Blocking Peptide in a 5:1 ratio with employed ETV2 antibody, catalog LS-E910, LifeSpan Biosciences) were used as negative controls for immunofluorescence staining. The stained sections were examined using the Olympus Fluoview 1200 confocal microscope system and minimally processed with Imaris (Bitplane) software to prepare the figures. At least 5 pictures from every section were processed using ImageJ software (NIH) to quantify CD31⁺, ETV2⁺, pFLK1⁺, and Ki67⁺ areas.

To further confirm the specificity of the ETV2 antibody staining, we employed the *iEtv2* embryonic stem (ES) cell system that expresses ETV2-V5 in a doxycycline-inducible manner, following protocol described previously (17, 19). Briefly, doxycycline-treated *iEtv2* ES cells (cultured on Matrigel-coated coverslips) were fixed with ice-cold methanol for 10 minutes at room temperature. After fixation, the ES cells were first blocked using freshly made blocking buffer (10% Normal Goat Serum, catalog 5425S, Cell Signaling Technology, in 1 \times TBS) to prevent nonspecific binding, then incubated overnight at 4°C with rat anti-V5 antibody (1:1,000) (catalog ab206571, Abcam) and rabbit anti-mouse ETV2 (1:1,000) (catalog orb156791, Biorbyt), and finally visualized with Alexa Fluor 488–labeled goat anti-rabbit (1:500) (catalog ab150077, Abcam) and Alexa Fluor 568–labeled goat anti-rat (1:500) (catalog ab11077, Abcam) secondary antibodies for 1 hour at room temperature. Later, the cells were processed to counterstain nuclei with DAPI (catalog D1306, ThermoFisher Scientific), cured with ProLong Diamond Antifade mountant (catalog P36970, ThermoFisher Scientific) for 12 hours, and finally sealed with nail polish for preservation. The

stained cells were examined using the Olympus Fluoview 1200 confocal microscope system and minimally processed with Imaris (Bitplane) software to prepare the figures. The data show that both the ETV2 and V5 tag were present in nuclei and perinuclear spaces, confirming the specificity of the *Etv2* staining (Supplemental Figure 1, C and D).

Lung EC isolation. Lungs were harvested from the mice, dissociated into single-cell suspension by using a digestion buffer consisting of Collagenase II (catalog 17101-015, ThermoFisher Scientific) and Deoxyribonuclease 1 (catalog LS002139, Worthington) solution for 30 minutes, stained with rat anti-mouse CD31 (catalog 102501, Biolegend) conjugated magnetic sheep anti-rat IgG Dynabeads (catalog 11035, ThermoFisher Scientific), and CD31⁺ cells were sorted using MACS. Afterward, sorted CD31⁺ ECs were either cultured with M199 medium containing 20% (v/v) FBS and EC growth supplement (catalog E2759, MilliporeSigma) or directly processed for total RNA isolation by the RNeasy mini kit (catalog 74104, Qiagen), following the manufacturer's instructions.

TAEC isolation. Tumors were harvested from the mice, dissociated into single-cell suspension using a digestion buffer consisting of Collagenase i.v. (catalog LS004188, Worthington), Dispase (catalog 17105-041, ThermoFisher Scientific), and Deoxyribonuclease 1 (catalog LS002139, Worthington) for 90 minutes at 37°C and stained with PE-Cy7 anti-mouse CD31 (catalog 102418, Biolegend) and APC anti-mouse CD45 (catalog 103112, Biolegend) antibodies. GFP-CD45-CD31⁺ ECs were FACS sorted using BD FACSAria II (BD Bioscience). Sorted ECs were processed for total RNA isolation by the RNeasy mini kit (catalog 74104, Qiagen) following the manufacturer's instructions. At least 5 independent tumors per group were used for gene expression analysis.

qRT-PCR. RNA and cDNA were prepared according to the manufacturers' protocols (Qiagen and Quantabio, respectively). Gene expression was measured by quantitative RT-PCR using primers detailed in the Supplemental Table 1.

Two-photon imaging and analysis of vessel morphology. For 2-photon (2P) imaging experiments, tumor cells were implanted in the ear pinna (and in some cases the hind flank) by injecting 10 μ l LLC-GFP and Matrigel mixture (2×10^6 cells/ml). Twenty-one days after tumor implantation, mice were anesthetized with isoflurane and placed in a custom chamber for imaging. 2PM was performed noninvasively through skin. Blood vessels were labeled with a retro-orbital injection of either 70-kDa Rhodamine Dextran (50 μ l, ~ 1 μ g; catalog D1824, ThermoFisher Scientific) or 655 nm Q-dots (15 μ l; catalog Q21321MP, Invitrogen). Multiple images were collected near the tumor margin using a custom-built 2PM system equipped with a Chameleon Vision II Ti:Sapp laser and a 20 \times 1.0 NA Olympus water dipping objective. Each 3D image consisted of 31 Z-slices taken in 2.5- μ m steps. Z-stacks were rendered in 3D, and morphometric analysis was performed to assess vessel diameter, the number of discontinuous segments in the tumor-associated vessel network, and the volume of each vessel segment. Imaris (Bitplane) was used to generate 3D contour surfaces to identify vessels (Supplemental Video 1). Surface quality was optimized using background subtraction and thresholding and common settings used across all images. Vessel complexity was determined by counting the number of discrete vessel segments in each image. The volume of each vessel segment in an image was measured and compared across groups by using a linear mixed-effects model where the fixed effects are the treatment groups themselves and the random effects are due to intrainage correlation. Normality of the outcome variable was achieved after a \log_{10} transform, and all tests were performed on the transformed data. After the model was fitted, pairwise statistical contrasts were used to assess pairwise group differences. Vessel leak was variable and was often observed in discrete regions of an image. Therefore, to minimize selection bias in our analysis, we quantified leak by averaging histograms of maximum intensity projections for all images in each group and then plotting average pixel intensity counts for each group. These plots were analyzed by fitting them to an exponential probability distribution function using maximum likelihood estimation methods to extract the rate of decay for each group. When extravascular leak was present, it resulted in an increase in the intermediate pixel intensity counts (10–80 gray levels) and thus a lower rate of decay for the plot. Maximum likelihood estimates were obtained for each curve, and the estimates were compared by generating a null-hypothesis estimate and a likelihood ratio test to assess a goodness of fit. Vessel integrity was assessed using a standard kymograph analysis on representative images.

Lentiviral *Etv2* shRNA production. pLKPuro lentiviral *Etv2* shRNA clones, TRCN0000084284 (NM_007959.1-93s1c1), TRCN0000084285 (NM_007959.1-52s1c1), TRCN0000084286 (NM_007959.1-887s1c1), and TRCN0000084287 (NM_007959.1-888s1c1), constructed and distributed by the RNAi Consortium at the Broad Institute (<https://portals.broadinstitute.org/gpp/public/>), were obtained from the

McDonnell Genome Institute at Washington University School of Medicine and funded in part by the Children's Discovery Institute of Washington University in St. Louis. 293T cells were transfected with pLKPuro *Etv2* shRNA constructs, pCAG-HIVgp, and pCMV-VSV-G-RSV-Rev (4:3:1) by using the calcium phosphate method. Sixteen hours after transfection, media were changed and cells were then grown for additional 48 hours. Subsequently, the supernatant was harvested and concentrated by Lenti-X-Concentrator (Clontech). The virus titer was determined using the Lenti-X p24 Rapid Titer Kit (Clontech). For the intratumor injection, IFU was around 3×10^7 /ml. In a preliminary screening with this panel of *Etv2* shRNA lentiviruses, we identified lentiviral shRNA clone TRCN0000084284 (NM_007959.1-93s1c1) to be most effective in restricting tumor growth, and hence, it was used for all subsequent experiments (data not shown). Lentiviral *Gfp* shRNA was used as control treatment.

EC proliferation assay. Lung ECs, previously sorted from wild-type and *Tie2-Cre;Etv2*-CKO mice, were cultured in growth medium consisting of M199 medium (Gibco), 10% (v/v) FBS, 100 unit/ml penicillin, and 100 µg/ml streptomycin. For proliferation assay, cells were plated in 96-well plates (3,000 cells/well). One day later, medium was changed to 0.5% serum-containing medium. After 24 hours, VEGF (50 ng/ml) or FGF2 (50 ng/ml) was added to the culture. After 3 days, 10 µl CCK-8 (catalog 96992, MilliporeSigma) solution was added to each well, and the plates were incubated for 3 hours at 37°C. Absorbance at 450 nm (A450) for each well was measured.

Aortic ring assay. The aortic ring assay was performed as previously described (1, 38). Briefly, aortas were retrieved from control or *Tie2-Cre;Etv2*-CKO mice, cut into rings approximately 0.5 mm in width, and cultured for 24 hours in serum-free culture medium. Subsequently, aortic rings were embedded into Matrigel (catalog 356231, Corning), and culture medium containing 2.5% FBS and VEGF (50 ng/ml) or FGF2 (50 ng/ml) was added. Medium was changed on days 3, 5, and 7. Aortic rings were fixed with 4% PFA on day 8, and sprout number and sprout length were measured using ImageJ image analysis software (NIH).

Tube formation assay. Wild-type and lentiviral *Etv2* shRNA-infected YSE cells, cultured in growth medium consisting of M199 medium (Gibco), 10% (v/v) FBS, 100 unit/ml penicillin, and 100 µg/ml streptomycin, were kept in 24-hour hypoxia (<1% oxygen), followed by 24-hour normoxia (in which overnight serum starvation [0.5% serum] was used). Afterward, cells were plated on a Matrigel-coated (catalog 96992, Corning) 24-well plate with either VEGF (50 ng/ml) or FGF2 (50 ng/ml) and incubated at 37°C for 5 hours, before images were taken with a Leica DFC 310 FX microscope system.

ROS induction, measurement, and scavenger treatment. For ROS induction, wild-type or *Etv2* shRNA-infected YSE cells were plated in 6-well culture plate (1.5×10^5 cells/well). The following day, cells were treated with H₂O₂, BSO, or hypoxic condition (<1% O₂) for 24 hours or hypoxia/reoxygenation (24 hours <1% O₂, followed by 24 hours normoxia). For ROS measurement, YSE or tissue-derived ECs were incubated with PBS containing 2.5 µM DCFDA (catalog D399, ThermoFisher Scientific) for 10 minutes at 37°C. Tissue-derived cells were stained with PE-Cy7 anti-mouse CD31 (catalog 102418, Biolegend) and APC anti-mouse CD45 (catalog 103112, Biolegend) antibodies. ROS levels in YSE cells or in CD45⁺CD31⁺ cells from the tissues were measured by BD LSRFortessa (BD Bioscience). For in vitro ROS scavenger treatment, NAC (dissolved in water; 5 mM) (catalog A9165, MilliporeSigma) and APO (dissolved in DMSO and later diluted with water; 100 mM) (catalog 178385EMD, MilliporeSigma) were added to the YSE cells at the beginning of reoxygenation period for next 24 hours. For the in vivo treatment, NAC (200 mg/kg, dissolved in water) and APO (50 mg/kg, dissolved in DMSO and later diluted with water) were intraperitoneally injected into the mice.

Preparation of *Etv2* siRNA peptide nanoparticle. For the siRNA nanoparticle treatment study, we designed the *Etv2* siRNA against the sequence "GAGCGGAATTTGGTTTCTATT" [the sequence of the lentiviral shRNA clone TRCN0000084284(NM_007959.1-93s1c1) that was used for the shRNA studies] and obtained it from MilliporeSigma. MISSION siRNA Universal Negative Control #1 (catalog SIC001, MilliporeSigma) was used as scrambled siRNA control. For tracking the distribution of the siRNA, Quasar 705 tagged *Etv2* siRNA was obtained from MilliporeSigma. 100 µM siRNA solution was prepared by dissolving in 1× siRNA buffer (catalog B-002000-UB-100, Dharmacon) and incubating on an orbital mixer (~500 rpm) at 37°C for 70–90 minutes; this stock siRNA was stored in 10 µl aliquot at –80°C until use. To prepare the nanoparticle complex, 10 µl of the siRNA suspension was mixed with 5 µl of 20 mM p5RHH peptide solution and 185 µl of 1× HBSS (Gibco) and incubated on ice for approximately 7 minutes for the siRNA and peptide to conjugate at a siRNA-to-peptide ratio of 1:100. The resultant 200 µl siRNA peptide nanoparticle was immediately injected into the mouse through the tail vein to deliver a siRNA dose of 1 nmol/mouse (2, 46).

IVIS imaging. To track the siRNA distribution after nanoparticles injection, in vivo fluorescence images were acquired and analyzed with a Xenogen IVIS Spectrum imaging system (Caliper Life-Sciences). Mice were kept under isoflurane inhalation anesthesia during the whole-body image acquisition process. Tumor and other major organs were harvested immediately after that and processed for imaging as well. A fixed protocol (excitation, 640 nm; emission, 700 nm; exposure time, 2 s; binning factor, 8; f value, 2; field of view, 12.9) was used for image acquisitions at 24 hours after tail vein injection of nanoparticles containing Quasar705-labeled *Etv2* siRNA into tumor-bearing wild-type mice. For the noninjected subjects, HBSS was injected through tail veins, and images were taken following the same protocol (2, 46).

Blood pressure measurement and compliance studies. Arterial blood pressure and arterial compliance measurements were performed after 5 consecutive injections (every other day) of vehicle or *Etv2* siRNA or scrambled siRNA nanoparticles into healthy wild-type mice as described previously (3, 49). Briefly, for blood pressure, mice were anesthetized with 1.5% isoflurane and kept on a heating pad to maintain normal body temperature and monitored via a rectal thermometer. A 2- to 3-mm midline incision was made in the neck; the lobes of the thymus were separated to expose the right common carotid artery. After clamping and making a small nick in the right common carotid artery, a Millar pressure transducer (model SPR-671) was introduced and advanced to the ascending aorta. Systolic blood pressure, diastolic blood pressure, and heart rate were recorded and analyzed using the PowerLab data acquisition system and LabChart 7 for Mac software, respectively (ADInstruments). For compliance studies, following the blood pressure measurement, mice were euthanized under isoflurane anesthesia, and the ascending aorta and the left common carotid artery were excised and placed in physiology saline (PSS) at 37°C. After cleaning the fatty tissues, vessels were placed on a pressure arteriograph (Danish Myo Technology), maintained in PSS at 37°C, and examined with an inverted microscope attached to a CCD camera and a computerized system that allows continuous recording of the vessel diameter measurement (4, 50).

Echocardiography. The Mouse Cardiovascular Phenotyping Core at Washington University School of Medicine performed noninvasive cardiac ultrasound examination of healthy wild-type mice under light anesthesia, after 5 consecutive injections of vehicle or *Etv2* siRNA or scrambled siRNA nanoparticle (every other day). VisualSonics Vevo-2100 cardiac echocardiography system (FUJIFILM, VisualSonics Inc.) was used to characterize the structure and function of the heart and great vessels.

Histological analysis. Heart, lungs, kidneys, and liver were harvested after 5 injections (every other day) of vehicle or *Etv2* siRNA or scrambled siRNA nanoparticles into healthy wild-type mice and fixed in 10% buffered formalin for 48 hours. The tissues were decalcified in EDTA solution, embedded in paraffin, and cut to 5- μ m sections. Finally, the sections were stained with H&E. Digital images of 4 random areas per H&E-stained organ section were acquired at 20 \times magnification and checked by a double blinded histologist/pathologist.

Single-dose siRNA nanoparticle administration, blood sampling, HPLC, and pharmacokinetic analysis. Five wild-type mice (C57BL/6J; ~17 weeks old) received a single i.v. dose of siRNA nanoparticle and underwent PK measurements. A carotid artery catheter was inserted before the siRNA nanoparticle dosing for blood sampling. Blood samples were taken prior to and at 10, 40, 90, and 180 minutes after the i.v. administration of p5RHH-Cy3 siRNA nanoparticle. Blood drawn was replaced with 80 μ l heparinized saline (5 U/ml) after each collection to avoid volume depletion. Plasma was separated by centrifugation and then stored at -80°C until analyzed for siRNA.

Individual plasma samples (~60 μ l) were added with 0.4 ml Clarity OTX lysis-loading buffer (Phenomenex Inc.). The mixture was vortex mixed for 30 seconds and then loaded onto the solid-phase extraction (SPE) cartridge. The siRNA nanoparticles were extracted from individual plasma samples using Clarity OTX SPE cartridges with polymeric sorbent (100 mg/3 ml; Phenomenex Inc.). Sorbent was conditioned with 1.0 ml methanol and equilibrated with 1 ml of 150 mM NaH₂PO₄ buffer (pH 5.5) containing 2 mM Na₂N₃. For plasma samples, following sample loading, the cartridge was washed with 4.0 ml washing buffer (50 mM NaH₂PO₄ buffer [pH 5.5] containing 50% acetonitrile). The siRNA nanoparticles were eluted with 1 ml elution buffer (100 mM NH₄HCO₃ containing 10% tetrahydrofuran and 40% acetonitrile). The eluent was evaporated to near dryness using a Savant SC110 SpeedVac concentrator. Samples were reconstituted with 100 μ l HPLC-grade water, and a 25- μ l aliquot was injected into the HPLC column. The HPLC assay was carried out using an Agilent series 1200 HPLC system equipped with a binary pump, autosampler, and degasser coupled to an Agilent 1260 fluorescence detector. Separation was achieved on an Acquity UPLC oligonucleotide BEH C18 column (50 \times 2.1 mm, 1.7- μ m particle size; Waters Corporation). The analyte was eluted using acetonitrile/100 mM hexylammonium acetate (48:52, v/v) as the mobile phase with a

flow rate of 0.1 ml/min. The column temperature was set at 60°C. The siRNA nanoparticle was detected by use of an excitation wavelength of 548 nm and an emission wavelength of 566 nm.

A 1-compartment open model with first-order elimination ($C = C^0 e^{-kt}$) was used to characterize drug disposition in plasma, where C^0 represents siRNA concentration at time 0 and k denotes the first-order elimination rate constant. Elimination half-life was calculated as $t_{1/2} = 0.693/k$

Statistics. GraphPad Prism 7 software was used for performing statistical analysis and generating graphs/plots. Data are presented as mean with standard deviation for all the measurements. All experimental data were reliably reproduced in 2 or more individual biological replicates. Comparison between 2 independent samples was performed using a 2-tailed Student's *t* test. In case of comparing more than 2 groups, 1-way ANOVA with post hoc Dunnett's or Tukey's or Bonferroni's multiple-comparison test or 2-way ANOVA with either post hoc Tukey's or Sidak's multiple-comparison test was used, whichever appropriate. Tumor volume data was analyzed using 2-way repeated measures ANOVA with either post hoc Tukey's or Sidak's multiple-comparison test. A $P < 0.05$ was considered statistically significant.

Study approval. Animal husbandry, generation, handling, and experimentation were performed in accordance with protocols approved by the Institutional Animal Care and Use Committee of Washington University School of Medicine in St. Louis.

Author contributions

AUK, TJL, and KC conceived and designed experiments and wrote the paper. AUK and TJL performed the experiments and analyzed the data. JCB, LY, SH, and MJM helped with 2P imaging, 2P data analysis, and preparation. HP and SAW helped with the siRNA design and nanoparticles preparation. QZ helped with the pharmacokinetics study of the siRNA nanoparticles. KK, JW, and HKK helped with characterizing CKO mice and performing the tube formation assay. FL helped with *Ets* factor expression analysis. RPM and KH helped to measure blood pressure and perform compliance studies. DJV helped in planning of tissue collection for histology and performed histologic inspection of H&E-stained tissue sections. KC provided overall supervision and coordinated all the experimental activities.

Acknowledgments

We thank members of the Choi lab for constructive criticism, encouragement, and discussion. We would like to thank Alexander S. Krupnick for providing LLC-GFP cells, Laurence A. Lasky for providing YSE cells, and Bernd H. Zinselmeyer for helping with immunofluorescence image processing. We also thank Stephen T. Oh for providing the access to a hypoxic (regulated oxygen) incubator. We thank The RNAi Consortium at Broad Institute, Children's Discovery Institute, and McDonnell Genome Institute at Washington University for providing shRNA clones. We thank the Washington University Center for Cellular Imaging for providing the access to the confocal microscope and the Washington University Department of Medicine In vivo Imaging Core for providing access to 2P imaging. We thank Attila Kovacs and Carla J. Weinheimer of the Mouse Cardiovascular Phenotyping Core at Washington University School of Medicine for the echocardiogram analysis. We thank the Alvin J. Siteman Cancer Center at Washington University School of Medicine and Barnes-Jewish Hospital in St. Louis, Missouri, USA, for the use of the TPC, which provided the human tumor specimens. The Siteman Cancer Center is supported in part by a National Cancer Institute Cancer Center support grant (P30 CA91842). This work was supported by NIH grants R01HL63736 and R01HL55337 (to KC), R01AI077600 (to MM), R01HL105314 (to RM), and R01DK102691, R01AR067491, and R01HL073646 (to SW) and the Basic Science Research Program through the National Research Foundation of Korea funded by the Ministry of Education (2016R1A6A3A01012289, to TL).

Address correspondence to: Kyunghye Choi, Campus Box 8118, 660 S. Euclid Avenue, St. Louis, Missouri 63110, USA. Phone: 314.362.8716; Email: kchoi@wustl.edu.

1. Folkman J. Tumor angiogenesis: therapeutic implications. *N Engl J Med*. 1971;285(21):1182–1186.
2. Hanahan D, Weinberg RA. Hallmarks of cancer: the next generation. *Cell*. 2011;144(5):646–674.
3. Ye W. The complexity of translating anti-angiogenesis therapy from basic science to the clinic. *Dev Cell*. 2016;37(2):114–125.
4. Ferrara N, Adamis AP. Ten years of anti-vascular endothelial growth factor therapy. *Nat Rev Drug Discov*. 2016;15(6):385–403.
5. Kamba T, McDonald DM. Mechanisms of adverse effects of anti-VEGF therapy for cancer. *Br J Cancer*. 2007;96(12):1788–1795.

6. Lee S, et al. Autocrine VEGF signaling is required for vascular homeostasis. *Cell*. 2007;130(4):691–703.
7. Kamba T, et al. VEGF-dependent plasticity of fenestrated capillaries in the normal adult microvasculature. *Am J Physiol Heart Circ Physiol*. 2006;290(2):H560–H576.
8. De Val S, et al. Combinatorial regulation of endothelial gene expression by ets and forkhead transcription factors. *Cell*. 2008;135(6):1053–1064.
9. Wythe JD, et al. ETS factors regulate Vegf-dependent arterial specification. *Dev Cell*. 2013;26(1):45–58.
10. Randi AM, Sperone A, Dryden NH, Birdsey GM. Regulation of angiogenesis by ETS transcription factors. *Biochem Soc Trans*. 2009;37(Pt 6):1248–1253.
11. Wei GH, et al. Genome-wide analysis of ETS-family DNA-binding in vitro and in vivo. *EMBO J*. 2010;29(13):2147–2160.
12. Pham VN, et al. Combinatorial function of ETS transcription factors in the developing vasculature. *Dev Biol*. 2007;303(2):772–783.
13. Meadows SM, Myers CT, Krieg PA. Regulation of endothelial cell development by ETS transcription factors. *Semin Cell Dev Biol*. 2011;22(9):976–984.
14. Dejana E, Taddei A, Randi AM. Foxs and Ets in the transcriptional regulation of endothelial cell differentiation and angiogenesis. *Biochim Biophys Acta*. 2007;1775(2):298–312.
15. Ferdous A, et al. Nkx2-5 transactivates the Ets-related protein 71 gene and specifies an endothelial/endocardial fate in the developing embryo. *Proc Natl Acad Sci USA*. 2009;106(3):814–819.
16. Kataoka H, et al. ETV2/ER71 induces vascular mesoderm from Flk1+PDGFRα+ primitive mesoderm. *Blood*. 2011;118(26):6975–6986.
17. Lee D, et al. ER71 acts downstream of BMP, Notch, and Wnt signaling in blood and vessel progenitor specification. *Cell Stem Cell*. 2008;2(5):497–507.
18. Rasmussen TL, et al. VEGF/Flk1 signaling cascade transactivates ETV2 gene expression. *PLoS One*. 2012;7(11):e50103.
19. Liu F, et al. Induction of hematopoietic and endothelial cell program orchestrated by ETS transcription factor ER71/ETV2. *EMBO Rep*. 2015;16(5):654–669.
20. Sumanas S, Gomez G, Zhao Y, Park C, Choi K, Lin S. Interplay among Etsrp/ER71, Scl, and Alk8 signaling controls endothelial and myeloid cell formation. *Blood*. 2008;111(9):4500–4510.
21. Elcheva I, et al. Direct induction of haematoendothelial programs in human pluripotent stem cells by transcriptional regulators. *Nat Commun*. 2014;5:4372.
22. Lindgren AG, Veldman MB, Lin S. ETV2 expression increases the efficiency of primitive endothelial cell derivation from human embryonic stem cells. *Cell Regen (Lond)*. 2015;4(1):1.
23. Ginsberg M, et al. Efficient direct reprogramming of mature amniotic cells into endothelial cells by ETS factors and TGFβ suppression. *Cell*. 2012;151(3):559–575.
24. Han JK, et al. Direct conversion of adult skin fibroblasts to endothelial cells by defined factors. *Circulation*. 2014;130(14):1168–1178.
25. Morita R, et al. ETS transcription factor ETV2 directly converts human fibroblasts into functional endothelial cells. *Proc Natl Acad Sci USA*. 2015;112(1):160–165.
26. Lee S, et al. Direct reprogramming of human dermal fibroblasts into endothelial cells using ER71/ETV2. *Circ Res*. 2017;120(5):848–861.
27. De Val S, Black BL. Transcriptional control of endothelial cell development. *Dev Cell*. 2009;16(2):180–195.
28. Sumanas S, Choi K. ETS transcription factor ETV2/ER71/Etsrp in hematopoietic and vascular development. *Curr Top Dev Biol*. 2016;118:77–111.
29. Brown TA, McKnight SL. Specificities of protein-protein and protein-DNA interaction of GABP alpha and two newly defined ets-related proteins. *Genes Dev*. 1992;6(12B):2502–2512.
30. Rasmussen TL, et al. ER71 directs mesodermal fate decisions during embryogenesis. *Development*. 2011;138(21):4801–4812.
31. Wareing S, Mazan A, Pearson S, Göttgens B, Lacaud G, Kouskoff V. The Flk1-Cre-mediated deletion of ETV2 defines its narrow temporal requirement during embryonic hematopoietic development. *Stem Cells*. 2012;30(7):1521–1531.
32. Park C, et al. Injury-mediated vascular regeneration requires endothelial ER71/ETV2. *Arterioscler Thromb Vasc Biol*. 2016;36(1):86–96.
33. Xu CX, et al. ETV2/ER71 regulates hematopoietic regeneration by promoting hematopoietic stem cell proliferation. *J Exp Med*. 2017;214(6):1643–1653.
34. Cahalan MD, Parker I, Wei SH, Miller MJ. Two-photon tissue imaging: seeing the immune system in a fresh light. *Nat Rev Immunol*. 2002;2(11):872–880.
35. Fukumura D, Duda DG, Munn LL, Jain RK. Tumor microvasculature and microenvironment: novel insights through intravital imaging in pre-clinical models. *Microcirculation*. 2010;17(3):206–225.
36. Zhao H, Choi K. A CRISPR screen identifies genes controlling ETV2 threshold expression in murine hemangiogenic fate commitment. *Nat Commun*. 2017;8(1):541.
37. Matsumoto T, et al. VEGF receptor-2 Y951 signaling and a role for the adapter molecule TSA1 in tumor angiogenesis. *EMBO J*. 2005;24(13):2342–2353.
38. Baker M, et al. Use of the mouse aortic ring assay to study angiogenesis. *Nat Protoc*. 2011;7(1):89–104.
39. Fraisl P, Mazzone M, Schmidt T, Carmeliet P. Regulation of angiogenesis by oxygen and metabolism. *Dev Cell*. 2009;16(2):167–179.
40. Kim YW, Byzova TV. Oxidative stress in angiogenesis and vascular disease. *Blood*. 2014;123(5):625–631.
41. Szatrowski TP, Nathan CF. Production of large amounts of hydrogen peroxide by human tumor cells. *Cancer Res*. 1991;51(3):794–798.
42. Xia C, Meng Q, Liu LZ, Rojanasakul Y, Wang XR, Jiang BH. Reactive oxygen species regulate angiogenesis and tumor growth through vascular endothelial growth factor. *Cancer Res*. 2007;67(22):10823–10830.
43. Michiels C, Arnould T, Houbion A, Remacle J. Human umbilical vein endothelial cells submitted to hypoxia-reoxygenation in vitro: implication of free radicals, xanthine oxidase, and energy deficiency. *J Cell Physiol*. 1992;153(1):53–61.
44. Zhu X, Zuo L, Cardounel AJ, Zweier JL, He G. Characterization of in vivo tissue redox status, oxygenation, and formation of reactive oxygen species in postischemic myocardium. *Antioxid Redox Signal*. 2007;9(4):447–455.
45. Hou KK, Pan H, Lanza GM, Wickline SA. Melittin derived peptides for nanoparticle based siRNA transfection. *Biomaterials*.

- 2013;34(12):3110–3119.
46. Zhou HF, et al. Peptide-siRNA nanocomplexes targeting NF- κ B subunit p65 suppress nascent experimental arthritis. *J Clin Invest*. 2014;124(10):4363–4374.
47. Yan H, et al. Suppression of NF- κ B activity via nanoparticle-based siRNA delivery alters early cartilage responses to injury. *Proc Natl Acad Sci USA*. 2016;113(41):E6199–E6208.
48. Hou KK, Pan H, Ratner L, Schlesinger PH, Wickline SA. Mechanisms of nanoparticle-mediated siRNA transfection by melittin-derived peptides. *ACS Nano*. 2013;7(10):8605–8615.
49. Halabi CM, Broekelmann TJ, Lin M, Lee VS, Chu ML, Mecham RP. Fibulin-4 is essential for maintaining arterial wall integrity in conduit but not muscular arteries. *Sci Adv*. 2017;3(5):e1602532.
50. Halabi CM, Broekelmann TJ, Knutsen RH, Ye L, Mecham RP, Kozel BA. Chronic antihypertensive treatment improves pulse pressure but not large artery mechanics in a mouse model of congenital vascular stiffness. *Am J Physiol Heart Circ Physiol*. 2015;309(5):H1008–H1016.
51. Sizemore GM, Pitarresi JR, Balakrishnan S, Ostrowski MC. The ETS family of oncogenic transcription factors in solid tumours. *Nat Rev Cancer*. 2017;17(6):337–351.
52. Baltrunaite K, et al. ETS transcription factors Ets2 and Fli1b are required for tumor angiogenesis. *Angiogenesis*. 2017;20(3):307–323.
53. Oettgen P. The role of ets factors in tumor angiogenesis. *J Oncol*. 2010;2010:767384.
54. Chung AS, Ferrara N. Developmental and pathological angiogenesis. *Annu Rev Cell Dev Biol*. 2011;27:563–584.
55. Yin H, Kanasty RL, Eltoukhy AA, Vegas AJ, Dorkin JR, Anderson DG. Non-viral vectors for gene-based therapy. *Nat Rev Genet*. 2014;15(8):541–555.
56. Burnett JC, Rossi JJ, Tiemann K. Current progress of siRNA/shRNA therapeutics in clinical trials. *Biotechnol J*. 2011;6(9):1130–1146.
57. Kanasty R, Dorkin JR, Vegas A, Anderson D. Delivery materials for siRNA therapeutics. *Nat Mater*. 2013;12(11):967–977.
58. Pan H, et al. Lipid membrane editing with peptide cargo linkers in cells and synthetic nanostructures. *FASEB J*. 2010;24(8):2928–2937.