

2018

Enterovirus D68 surveillance, St. Louis, Missouri, USA, 2016

Mythili Srinivasan

Washington University School of Medicine in St. Louis

Angela Niesen

Washington University School of Medicine in St. Louis

Gregory A. Storch

Washington University School of Medicine in St. Louis

Follow this and additional works at: https://digitalcommons.wustl.edu/open_access_pubs

Recommended Citation

Srinivasan, Mythili; Niesen, Angela; and Storch, Gregory A., "Enterovirus D68 surveillance, St. Louis, Missouri, USA, 2016." *Emerging Infectious Diseases*, . . (2018).
https://digitalcommons.wustl.edu/open_access_pubs/8139

This Open Access Publication is brought to you for free and open access by Digital Commons@Becker. It has been accepted for inclusion in Open Access Publications by an authorized administrator of Digital Commons@Becker. For more information, please contact engeszer@wustl.edu.

Acknowledgments

We thank all those involved in the extensive efforts to implement clinical and environmental surveillance in Pakistan.

This work was supported by research grants from the World Health Organization (2013/363982) and the Bill and Melinda Gates Foundation (OPP1099374).

About the Author

Dr. Grassly is a professor of vaccine epidemiology in the department of infectious disease epidemiology at Imperial College London, London, UK. His primary research interests are the epidemiology of enteric viruses and immune response to infection and vaccination.

References

1. World Health Organization. Meeting of the Strategic Advisory Group of Experts on Immunization, November 2012—conclusions and recommendations. *Wkly Epidemiol Rec.* 2013;88:1–16.
2. Lewis I, Ottosen A, Rubin J, Blanc DC, Zipursky S, Wootton E. A supply and demand management perspective on the accelerated global introductions of inactivated poliovirus vaccine in a constrained supply market. *J Infect Dis.* 2017;216(suppl 1):S33–9. <http://dx.doi.org/10.1093/infdis/jiw550>
3. Global Polio Eradication Initiative. Standard operating procedures: responding to a poliovirus event or outbreak. V2.3 01; 2017 [cited 2017 May 7]. <http://www.polioeradication.org>
4. Shirreff G, Wadood MZ, Vaz RG, Sutter RW, Grassly NC. Estimated effect of inactivated poliovirus vaccine campaigns, Nigeria and Pakistan, January 2014–April 2016. *Emerg Infect Dis.* 2017;23:258–63. <http://dx.doi.org/10.3201/eid2302.161210>
5. Pervaiz A, Mbaeyi C, Baig MA, Burman A, Ahmed JA, Akter S, et al. Fractional-dose inactivated poliovirus vaccine campaign—Sindh Province, Pakistan, 2016. *MMWR Morb Mortal Wkly Rep.* 2017;66:1295–9. <http://dx.doi.org/10.15585/mmwr.mm6647a4>
6. Okayasu H, Sein C, Chang Blanc D, Gonzalez AR, Zehrung D, Jarrahian C, et al. Intradermal administration of fractional doses of inactivated poliovirus vaccine: a dose-sparing option for polio immunization. *J Infect Dis.* 2017;216(suppl 1):S161–7. <http://dx.doi.org/10.1093/infdis/jix038>

Address for correspondence: Nicholas C. Grassly, Imperial College London, Department of Infectious Disease Epidemiology, Norfolk Place, W2 1PG, UK; email: n.grassly@imperial.ac.uk

Enterovirus D68 Surveillance, St. Louis, Missouri, USA, 2016

Mythili Srinivasan, Angela Niesen, Gregory A. Storch

Author affiliations: Washington University, St. Louis, Missouri, USA (M. Srinivasan, G. Storch); St. Louis Children's Hospital, St. Louis (A. Niesen)

DOI: <https://doi.org/10.3201/eid2411.180397>

A fall 2016 outbreak of enterovirus D68 infection in St. Louis, Missouri, USA, had less effect than a fall 2014 outbreak on hospital census, intensive care unit census, and hospitalization for a diagnosis of respiratory illness. Without ongoing surveillance and specific testing, these cases might have been missed.

The largest known outbreak of enterovirus D68 (EV-D68) occurred in the United States in 2014 (1). Severe respiratory illnesses increased in fall of 2014, corresponding to a period when EV-D68 was present in the community, at St. Louis Children's Hospital (St. Louis, Missouri, USA) and elsewhere in the United States (1,2). Multiple reports suggested that the predominant virus was from clade B1, although some viruses from clades B2 were also detected (3–5). During 2015, there were few reports of EV-D68 circulating in the United States (6); however, in 2016, EV-D68 reappeared in multiple US locations (New York, Colorado); virus sequences suggested that the predominant virus was from clade B3 (4,7). We also documented EV-D68 activity in St. Louis in 2016. Sequencing of viruses from 2 patients tested in the St. Louis Children's Hospital virology laboratory revealed clade B3 with 99% identity to the clade B3 virus from New York (8). Our goal with this study was to determine if the 2016 outbreak had caused an increase in hospital census or increase in patients admitted with respiratory diagnosis, as was seen during the 2014 outbreak.

During August 7, 2016, through December 16, 2016, we used a previously described EV-D68–specific PCR to test 5%–10% of enterovirus/rhinovirus–positive samples submitted each week to the St. Louis Children's Hospital diagnostic virology laboratory. The samples had been obtained from patients seen at the hospital's emergency department or clinics or admitted to the inpatient units and had been routinely tested by a FilmArray Respiratory Panel (BioFire, Salt Lake City, UT, USA) (9). Samples were selected by laboratory staff without regard to patient characteristics and were deidentified before EV-D68 testing. We obtained inpatient and intensive care unit (ICU) census data for all patients (not limited to those with a

respiratory diagnosis) and discharge diagnoses for hospitalized patients from the hospital's Health Information Management System, an administrative database, for 2013–2016.

Discharge diagnoses were categorized as respiratory or nonrespiratory. A respiratory diagnosis was defined as any principal diagnosis referring to disease processes of the respiratory tract (e.g., asthma exacerbation, bronchiolitis, respiratory distress, respiratory failure, pneumonia). We used the Pearson χ^2 test of independence to compare the frequency distribution of patients with a respiratory diagnosis in 2014 and 2016 with frequency of those in 2013 and 2015 combined. All analyses were done with SAS/STAT software version 9.4 for Windows (SAS Institute, Cary, NC, USA). The Washington University Institutional Review Board determined that this project did not meet the definition of human subject research and, as such, was not subject to institutional review board review.

During August 7–November 5, 2016, we tested a total of 4,190 samples by using the viral respiratory panel; 1,058 (25%) were positive for rhinovirus/enterovirus. Further testing of 179 samples positive for rhinovirus/enterovirus revealed that 19 (11%) were positive for EV-D68 (online Technical Appendix Figure, panel A, <https://wwwnc.cdc.gov/EID/article/24/11/18-0397-Techapp1.pdf>). During November 6–26, 2016, we tested 47 rhinovirus/enterovirus–positive samples, and 4/47 (9%) were positive for EV-D68. During November 27–December 10, 2016, we tested 33 rhinovirus/enterovirus–positive samples, and none were positive for EV-D68. We did not include EV-D68 testing data from November 6–December 10, 2016, in the online Technical Appendix Figure because of the difficulty in obtaining discharge diagnosis data (changes in registration systems affected data collection during that period).

In contrast to the experience in 2014, overall inpatient or ICU census did not increase during this outbreak except for a 1–2 week period in October (online Technical Appendix Figure, panels B–D). During August 7–November 5, 2014, the number and percentage of patients hospitalized with a respiratory diagnosis increased significantly (852/5,894, 14%) compared with the corresponding periods in 2013 and 2015 combined (1,156/10,958, 11%; $p < 0.0001$). This increase in patients hospitalized with respiratory diagnoses in 2014 overlapped with the increase in EV-D68 activity in our hospital. In 2014, we tested 572 rhinovirus/enterovirus–positive specimens from August 3, 2104–October 31, 2014, and 159 (28%) were positive for EV-D68 (2). In contrast, the number and percentage of patients admitted with a respiratory diagnosis during August 7–November 5, 2016, decreased significantly (483/5,304, 9%) compared with the corresponding periods in 2013 and 2015 combined ($p = 0.004$).

The overall effects of the 2016 outbreak seem to have been less than those of the 2014 outbreak. The epidemiologic data from our hospital, which has a broad catchment area in the central United States, confirm that the period of EV-D68 activity in 2016 had less effect on hospital census, ICU census, and hospitalization for respiratory diagnosis than that in 2014. Although the measured parameters are relatively crude, we found no changes in data collection procedures that explain the observed differences, suggesting that the differences are the result of lower levels of EV-D68 circulation in the population in 2016. Our study suggests that surveillance using specific testing is needed to detect EV-D68 activity, which would have been missed if we had monitored only for increases in patients with respiratory diagnoses or hospital census.

Acknowledgments

We thank Joseph Moen and Michael Wallendorf for their assistance with statistical analyses.

About the Author

Dr. Srinivasan is a pediatric hospitalist at St. Louis Children's Hospital. Her research interest is the effects of EV-D68 in hospitalized children.

References

1. Midgley CM, Watson JT, Nix WA, Curns AT, Rogers SL, Brown BA, et al.; EV-D68 Working Group. Severe respiratory illness associated with a nationwide outbreak of enterovirus D68 in the USA (2014): a descriptive epidemiological investigation. *Lancet Respir Med*. 2015;3:879–87. [http://dx.doi.org/10.1016/S2213-2600\(15\)00335-5](http://dx.doi.org/10.1016/S2213-2600(15)00335-5)
2. Orvedahl A, Padhye A, Barton K, O'Bryan K, Baty J, Gruchala N, et al. Clinical characterization of children presenting to the hospital with enterovirus D68 infection during the 2014 outbreak in St. Louis. *Pediatr Infect Dis J*. 2016;35:481–7. <http://dx.doi.org/10.1097/INF.0000000000001060>
3. Huang W, Wang G, Zhuge J, Nolan SM, Dimitrova N, Fallon JT. Whole-genome sequence analysis reveals the enterovirus D68 isolates during the United States 2014 outbreak mainly belong to a novel clade. *Sci Rep*. 2015;5:15223. <http://dx.doi.org/10.1038/srep15223>
4. Wang G, Zhuge J, Huang W, Nolan SM, Gilrane VL, Yin C, et al. Enterovirus D68 subclade B3 strain circulating and causing an outbreak in the United States in 2016. *Sci Rep*. 2017;7:1242. <http://dx.doi.org/10.1038/s41598-017-01349-4>
5. Wylie KM, Wylie TN, Orvedahl A, Buller RS, Herter BN, Magrini V, et al. Genome sequence of enterovirus D68 from St. Louis, Missouri, USA. *Emerg Infect Dis*. 2015;21:184–6. <http://dx.doi.org/10.3201/eid2101.141605>
6. Abedi GR, Watson JT, Nix WA, Oberste MS, Gerber SI. Enterovirus and parechovirus surveillance—United States, 2014–2016. *MMWR Morb Mortal Wkly Rep*. 2018;67:515–8. <http://dx.doi.org/10.15585/mmwr.mm6718a2>
7. Messacar K, Robinson CC, Pretty K, Yuan J, Dominguez SR. Surveillance for enterovirus D68 in Colorado children reveals continued circulation. *J Clin Virol*. 2017;92:39–41.
8. Wylie KM, Wylie TN, Storch GA. Genome sequence of enterovirus D68 from St. Louis, Missouri, USA, 2016. *Genome*

Announc. 2017;5:e01630-16. <http://dx.doi.org/10.1128/genomeA.01630-16>

9. Wylie TN, Wylie KM, Buller RS, Cannella M, Storch GA. Development and evaluation of an enterovirus D68 real-time reverse transcriptase polymerase chain reaction (RT-PCR) assay. *J Clin Microbiol.* 2015;53:2641–7. <http://dx.doi.org/10.1128/JCM.00923-15>

Address for correspondence: Mythili Srinivasan, Washington University School of Medicine, St. Louis Children's Hospital, Department of Pediatrics, One Children's Place, NWT 9113, St. Louis, MO 63110, USA; email: srinivasan_m@kids.wustl.edu

Adenovirus-Associated Influenza-Like Illness among College Students, Pennsylvania, USA

Holly M. Biggs, Xiaoyan Lu, Lisa Dettinger, Senthilkumar Sakthivel, John T. Watson, Sameh W. Boktor

Author affiliations: Centers for Disease Control and Prevention, Atlanta, Georgia, USA (H.M. Biggs, X. Lu, J.T. Watson); Pennsylvania Department of Health, Harrisburg, Pennsylvania, USA (L. Dettinger, S. Boktor); Batelle, Atlanta (S. Sakthivel)

DOI: <https://doi.org/10.3201/eid2411.180488>

Among students with influenza-like illness at a Pennsylvania college student health center during 2016–2017, 44 (15%) of 288 with respiratory specimens tested positive for human adenovirus (HAdV). HAdV-3, -7, and -4 predominated, and types clustered temporally. HAdV infection should be considered among college students with acute respiratory illness.

Human adenoviruses (HAdVs) cause a range of clinical manifestations, most commonly acute respiratory illness (ARI), gastroenteritis, and conjunctivitis. Seven HAdV species (A–G) and >80 types are known to cause human infection, and certain HAdV types are associated with particular tissue tropisms and clinical syndromes (1). Outbreaks of HAdV infection occur in a variety of settings, including schools, long-term care facilities, military recruit

training facilities, and the civilian community (2–4). The substantial impact of HAdV ARI among US military recruits drove development of the first live oral vaccine for HAdV types 4 and 7 for military use. After vaccine introduction in 1971, and again after reintroduction in 2011, dramatic declines were documented in respiratory illness among recruits (5). Currently, the HAdV vaccine for types 4 and 7 is licensed in the United States for use in military personnel 17–50 years of age and is administered routinely at all US basic military training sites (5). However, despite some similarities between military recruits and civilian college students, including age and sharing of residences, little is known about the contribution of HAdV to respiratory illness in college students.

The Pennsylvania Department of Health (PDH) conducts surveillance for influenza-like illness (ILI), defined as fever (temperature $\geq 100^{\circ}\text{F}$ [$\geq 37.8^{\circ}\text{C}$]) plus cough or sore throat without a known cause other than influenza, at participating outpatient healthcare facilities throughout the state. Basic demographic information is recorded, and from a convenience sample of cases, a nasopharyngeal swab specimen is collected. These specimens are tested by the PDH Bureau of Laboratories using Centers for Disease Control and Prevention (CDC) real-time reverse transcription PCR for influenza A and B, HAdV, respiratory syncytial virus, human metapneumovirus, rhinovirus, and parainfluenza virus types 1–3.

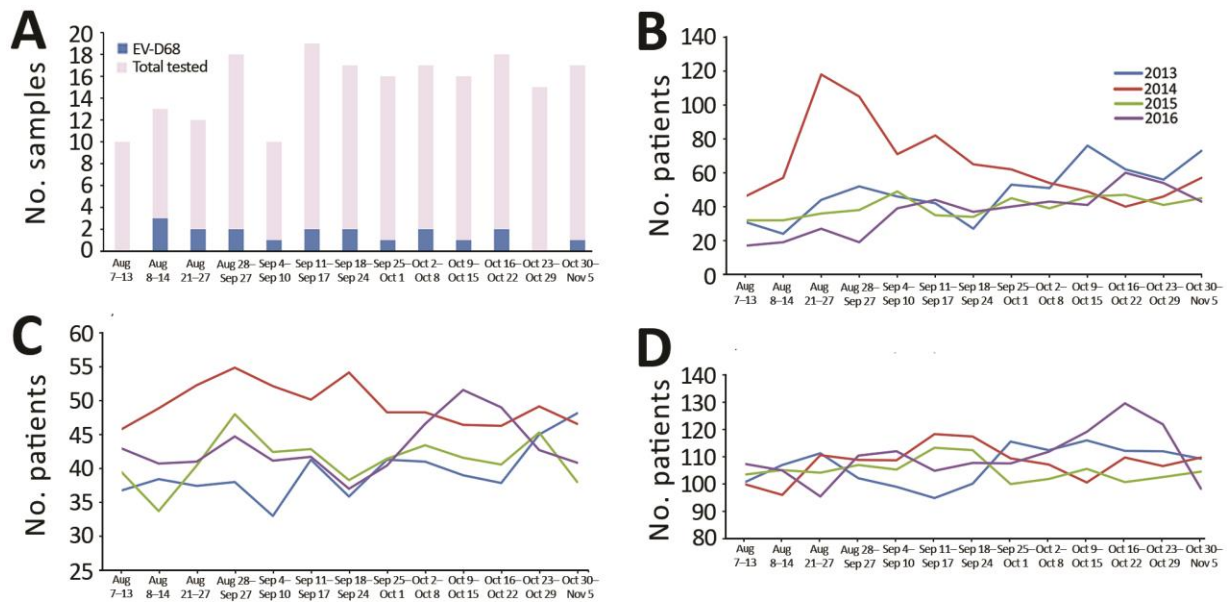
We describe HAdV types associated with ILI among students who sought care at a student health center (SHC) on a large college campus during August 28, 2016–August 26, 2017. Specimens identified as HAdV-positive among students with ILI at the SHC were sent to CDC to determine HAdV species and type. Molecular typing was performed by PCR and sequencing of the hexon hypervariable regions 1–6 (6).

During the study period, 1,149 ILI cases were reported from the SHC; for 288 (25%), a nasopharyngeal swab specimen was tested for respiratory viruses (Figure, panel A). Of these, 44 (15%) specimens were positive for HAdV. Three HAdV species and 4 HAdV types were detected: HAdV-3 and HAdV-7 of species HAdV-B in 21 (48%) and 16 (36%), respectively; HAdV-4 of species HAdV-E in 5 (11%); and HAdV-1 of species HAdV-C in 2 (5%). The median age of HAdV-positive students was 19 years (range 18–27 years), and 31 (70%) were male. Among HAdV-positive specimens, rhinovirus was co-detected in 4 and parainfluenza virus type 2 in 1.

HAdV-3 was identified during September–December; no additional HAdV-3 was identified after the 4-week winter break. HAdV-7 and -4 were first detected in December, before winter break, then throughout the spring; HAdV-7 was the most commonly detected type during this period (Figure, panel B).

Enterovirus D68 Surveillance, St. Louis, Missouri, USA, 2016

Technical Appendix



Technical Appendix Figure. Numbers of samples tested for enterovirus D68 (A), number of patients with respiratory diagnosis (B), and inpatient (C) and intensive care unit (D) daily census for patients admitted for any illness to St. Louis Children’s Hospital, St. Louis, Missouri, USA, 2013–2016. Discharge diagnoses were categorized as respiratory or nonrespiratory. Respiratory diagnoses were defined as any principal diagnosis referring to disease process of the respiratory tract.