

Washington University School of Medicine

Digital Commons@Becker

Open Access Publications

2019

Associations of autozygosity with a broad range of human phenotypes

David W. Clark
University of Edinburgh

Lihua Wang
Washington University School of Medicine in St. Louis

Mary Feitosa
Washington University School of Medicine in St. Louis

Dabeeru C. Rao
Washington University School of Medicine in St. Louis
et al.

Follow this and additional works at: https://digitalcommons.wustl.edu/open_access_pubs

Please let us know how this document benefits you.

Recommended Citation

Clark, David W.; Wang, Lihua; Feitosa, Mary; Rao, Dabeeru C.; and al., et, "Associations of autozygosity with a broad range of human phenotypes." *Nature Communications*. 10, 1. 4957 (2019).
https://digitalcommons.wustl.edu/open_access_pubs/8362

This Open Access Publication is brought to you for free and open access by Digital Commons@Becker. It has been accepted for inclusion in Open Access Publications by an authorized administrator of Digital Commons@Becker. For more information, please contact vanam@wustl.edu.

ARTICLE

<https://doi.org/10.1038/s41467-019-12283-6>

OPEN

Associations of autozygosity with a broad range of human phenotypes

David W Clark  et al.[#]

In many species, the offspring of related parents suffer reduced reproductive success, a phenomenon known as inbreeding depression. In humans, the importance of this effect has remained unclear, partly because reproduction between close relatives is both rare and frequently associated with confounding social factors. Here, using genomic inbreeding coefficients (F_{ROH}) for >1.4 million individuals, we show that F_{ROH} is significantly associated ($p < 0.0005$) with apparently deleterious changes in 32 out of 100 traits analysed. These changes are associated with runs of homozygosity (ROH), but not with common variant homozygosity, suggesting that genetic variants associated with inbreeding depression are predominantly rare. The effect on fertility is striking: F_{ROH} equivalent to the offspring of first cousins is associated with a 55% decrease [95% CI 44–66%] in the odds of having children. Finally, the effects of F_{ROH} are confirmed within full-sibling pairs, where the variation in F_{ROH} is independent of all environmental confounding.

*email: jim.wilson@ed.ac.uk. [#]A full list of authors and their affiliations appears at the end of the paper.

Given the pervasive impact of purifying selection on all populations, it is expected that genetic variants with large deleterious effects on evolutionary fitness will be both rare and recessive¹. However, precisely because they are rare, most of these variants have yet to be identified and their recessive impact on the global burden of disease is poorly understood. This is of particular importance for the nearly one billion people living in populations where consanguineous marriages are common², and the burden of genetic disease is thought to be disproportionately due to increased homozygosity of rare, recessive variants^{3–5}. Although individual recessive variants are difficult to identify, the net directional effect of all recessive variants on phenotypes can be quantified by studying the effect of inbreeding⁶, which gives rise to autozygosity (homozygosity due to inheritance of an allele identical-by-descent).

Levels of autozygosity are low in most of the cohorts with genome-wide data^{7,8} and consequently very large samples are required to study the phenotypic impact of inbreeding⁹. Here, we meta-analyse results from 119 independent cohorts to quantify the effect of inbreeding on 45 commonly measured complex traits of biomedical or evolutionary importance, and supplement these with analysis of 55 more rarely measured traits included in UK Biobank¹⁰.

Continuous segments of homozygous alleles, or runs of homozygosity (ROH), arise when identical-by-descent haplotypes are inherited down both sides of a family. The fraction of each autosomal genome in ROH > 1.5 Mb (F_{ROH}) correlates well with pedigree-based estimates of inbreeding¹¹. We estimate F_{ROH} using standard methods and software^{6,12} for a total of 1,401,776 individuals in 234 uniform sub-cohorts. The traits measured in each cohort vary according to original study purpose, but together cover a comprehensive range of human phenotypes (Fig. 1, Supplementary Data 7). The five most frequently contributed traits (height, weight, body mass index, systolic and diastolic blood pressure) are measured in >1,000,000 individuals; a further 16 traits are measured >500,000 times.

We find that F_{ROH} is significantly associated with apparently deleterious changes in 32 out of 100 traits analysed. Increased

F_{ROH} is associated with reduced reproductive success (decreased number and likelihood of having children, older age at first sex and first birth, decreased number of sexual partners), as well as reduced risk-taking behaviour (alcohol intake, ever-smoked, self-reported risk taking) and increased disease risk (self-reported overall health and risk factors including grip strength and heart rate). We show that the observed effects are predominantly associated with rare (not common) variants and, for a subset of traits, differ between men and women. Finally, we introduce a within-siblings method, which confirms that social confounding of F_{ROH} is modest for most traits. We therefore conclude that inbreeding depression influences a broad range of human phenotypes through the action of rare, recessive variants.

Results

Cohort characteristics. As expected, cohorts with different demographic histories varied widely in mean F_{ROH} . The within-cohort standard deviation of F_{ROH} is strongly correlated with the mean (Pearson's $r = 0.82$; Supplementary Fig. 3), and the most homozygous cohorts provide up to 100 times greater per-sample statistical power than cosmopolitan European-ancestry cohorts (Supplementary Data 5). To categorise cohorts, we plotted mean F_{ROH} against F_{IS} (Fig. 2). F_{IS} measures inbreeding as reflected by non-random mating in the most recent generation, and is calculated as the mean individual departure from Hardy–Weinberg equilibrium (F_{SNP} ; see Methods). Cohorts with high rates of consanguinity lie near the $F_{ROH} = F_{IS}$ line, since most excess SNP homozygosity is caused by ROH. In contrast, cohorts with small effective population sizes, such as the Amish and Hutterite isolates of North America, have high average F_{ROH} , often despite avoidance of mating with known relatives, since identical-by-descent haplotypes are carried by many couples, due to a restricted number of possible ancestors.

Traits affected by F_{ROH} . To estimate the effect of inbreeding on each of the 100 phenotypes studied, trait values were regressed on F_{ROH} within each cohort, taking account of covariates including

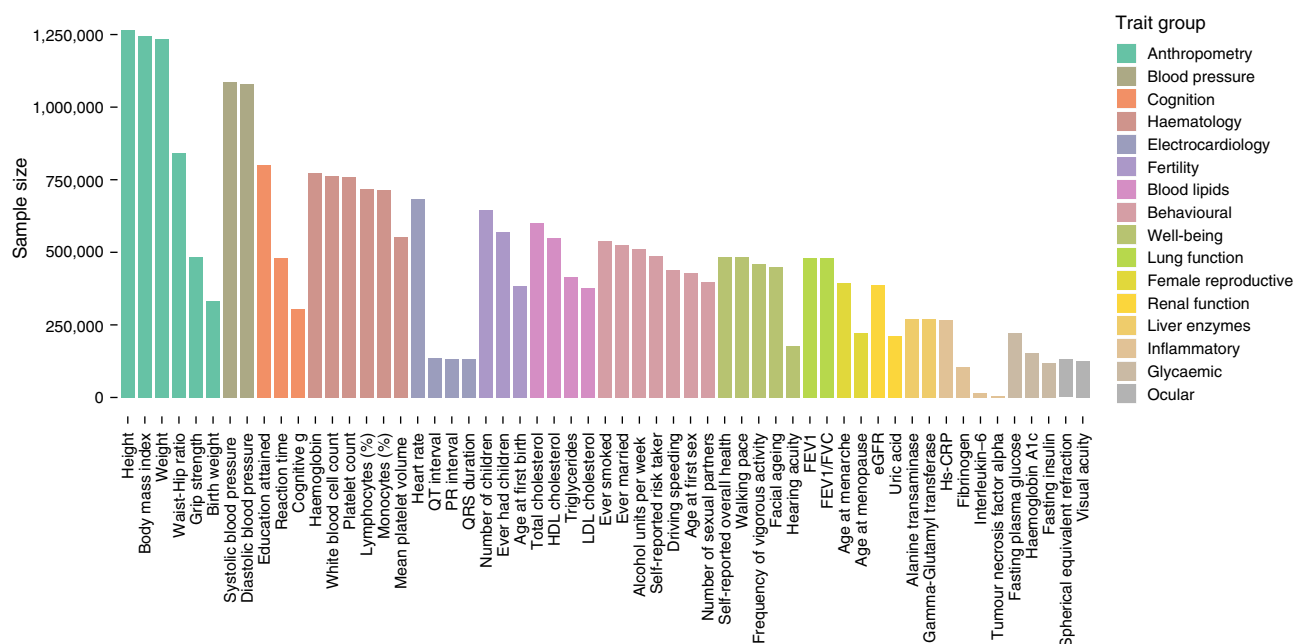


Fig. 1 Census of complex traits. Sample sizes are given for analyses of 57 representative phenotypes, arranged into 16 groups covering major organ systems and disease risk factors. HDL high-density lipoprotein, LDL low-density lipoprotein, hs-CRP high-sensitivity C-reactive protein, TNF-alpha tumour necrosis factor alpha, FEV1 forced expiratory volume in one second, FVC forced vital capacity, eGFR estimated glomerular filtration rate

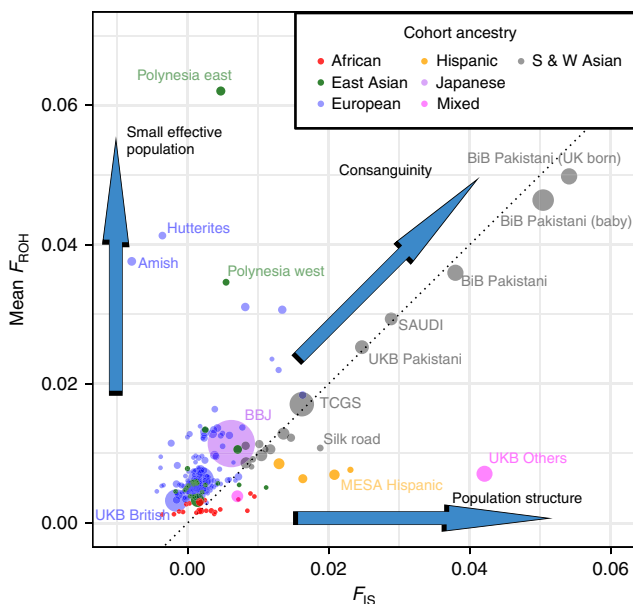


Fig. 2 Mean F_{ROH} and F_{IS} for 234 ROHgen sub-cohorts. Each cohort is represented by a circle whose area is proportional to the approximate statistical power ($N\sigma_{\beta_{ROH}}^2$) contributed to estimates of β_{ROH} . Mean F_{ROH} can be considered as an estimate of total inbreeding relative to an unknown base generation, approximately tens of generations past. F_{IS} measures inbreeding in the current generation, with $F_{IS} = 0$ indicating random mating, $F_{IS} > 0$ indicating consanguinity, and $F_{IS} < 0$ inbreeding avoidance⁴⁶. In cohorts along the y-axis, such as the Polynesians and the Anabaptist isolates, autozygosity is primarily caused by small effective population size rather than preferential consanguineous unions. In contrast, in cohorts along the dotted unity line, all excess SNP homozygosity is accounted for by ROH, as expected of consanguinity within a large effective population. A small number of cohorts along the x-axis, such as Hispanic and mixed-race groups, show excess SNP homozygosity without elevated mean F_{ROH} , indicating population genetic structuring, caused for instance by admixture and known as the Wahlund effect. A few notable cohorts are labelled. BBJ Biobank Japan, BiB Born in Bradford, UKB UK Biobank, MESA Multiethnic Study of Atherosclerosis, TCGS Tehran Cardiometabolic Genetic Study

age, sex, principal components of ancestry and, in family studies, a genomic relationship matrix (GRM) (Supplementary Data 3). Cross-cohort effect size estimates were then obtained by fixed-effect, inverse variance-weighted meta-analysis of the within-cohort estimates (Supplementary Data 10). Twenty-seven out of 79 quantitative traits and 5 out of 21 binary traits reach experiment-wise significance (0.05/100 or $p < 0.0005$; Fig. 3a, b). Among these are replications of the previously reported effects on reduction in height¹³, forced expiratory lung volume in one second, cognition and education attained⁶. We find that the 32 phenotypes affected by inbreeding can be grouped into five broader categories: reproductive success, risky behaviours, cognitive ability, body size, and health.

Despite the greater individual control over reproduction in the modern era, due to contraception and fertility treatments, we find that increased F_{ROH} has significant negative effects on five traits closely related to fertility. For example, an increase of 0.0625 in F_{ROH} (equivalent to the difference between the offspring of first cousins and those of unrelated parents) is associated with having 0.10 fewer children [$\beta_{0.0625} = -0.10 \pm 0.03$ 95% confidence interval (CI), $p = 1.8 \times 10^{-10}$]. This effect is due to increased F_{ROH} being associated with reduced odds of having any children ($OR_{0.0625} = 0.65 \pm 0.04$, $p = 1.7 \times 10^{-32}$) as opposed to fewer children among parents ($\beta_{0.0625} = 0.007 \pm 0.03$, $p = 0.66$). Since

autozygosity also decreases the likelihood of having children in the subset of individuals who are, or have been, married, ($OR_{0.0625} = 0.71 \pm 0.09$, $p = 3.8 \times 10^{-8}$) it appears that the cause is a reduced ability or desire to have children, rather than reduced opportunity. Consistent with this interpretation, we observe no significant effect on the likelihood of marriage ($OR_{0.0625} = 0.94 \pm 0.07$, $p = 0.12$) (Fig. 3b). All effect size, odds ratios and 95% CI are stated as the difference between $F_{ROH} = 0$ and $F_{ROH} = 0.0625$.

The effects on fertility may be partly explained by the effect of F_{ROH} on a second group of traits, which capture risky or addictive behaviour. Increased F_{ROH} is associated with later age at first sex ($\beta_{0.0625} = 0.83 \pm 0.19$ years, $p = 5.8 \times 10^{-17}$) and fewer sexual partners ($\beta_{0.0625} = -1.38 \pm 0.38$, $p = 2.0 \times 10^{-12}$) but also reduced alcohol consumption ($\beta_{0.0625} = -0.66 \pm 0.12$ units per week, $p = 1.3 \times 10^{-22}$), decreased likelihood of smoking ($OR_{0.0625} = 0.79 \pm 0.05$, $p = 5.9 \times 10^{-13}$), and a lower probability of being a self-declared risk-taker ($OR_{0.0625} = 0.84 \pm 0.06$, $p = 3.4 \times 10^{-5}$) or exceeding the speed limit on a motorway ($p = 4.0 \times 10^{-8}$). Conservative beliefs are likely to affect these traits, and are known to be confounded with F_{ROH} in some populations¹⁴, however, fitting religious participation as a covariate in UKB reduces, but does not eliminate the reported effects (Supplementary Fig. 10b, Supplementary Data 20). Similarly, fitting educational attainment as an additional covariate reduces 16 of 25 significant effect estimates, but actually increases 9, including age at first sex and number of children (Supplementary Fig. 10a, Supplementary Data 20). This is because reduced educational attainment is associated with earlier age at first sex and increased number of children, which makes it an unlikely confounder for the effects of F_{ROH} , which are in the opposite directions.

A third group of traits relates to cognitive ability. As previously reported, increased autozygosity is associated with decreased general cognitive ability, g ^{6,15} and reduced educational attainment⁶. Here, we also observe an increase in reaction time ($\beta_{0.0625} = 11.6 \pm 3.9$ ms, $p = 6.5 \times 10^{-9}$), a correlate of general cognitive ability (Fig. 3a, Supplementary Data 10).

A fourth group relates to body size. We replicate previously reported decreases in height and forced expiratory volume⁶ (Supplementary Data 21) and we find that increased F_{ROH} is correlated with a reduction in weight ($\beta_{0.0625} = 0.86 \pm 0.12$ kg, $p = 3.4 \times 10^{-28}$) and an increase in the waist to hip ratio ($\beta_{0.0625} = 0.004 \pm 0.001$, $p = 1.4 \times 10^{-11}$).

The remaining effects are loosely related to health and frailty; higher F_{ROH} individuals report significantly lower overall health and slower walking pace, have reduced grip strength ($\beta_{0.0625} = -1.24 \pm 0.19$ kg, $p = 6.9 \times 10^{-24}$), accelerated self-reported facial ageing, and poorer eyesight and hearing. Increased F_{ROH} is also associated with faster heart rate ($\beta_{0.0625} = 0.56 \pm 0.24$ bpm, $p = 5.9 \times 10^{-6}$), lower haemoglobin ($\beta_{0.0625} = 0.81 \pm 0.24$ gL⁻¹, $p = 1.6 \times 10^{-11}$), lymphocyte percentage, and total cholesterol ($\beta_{0.0625} = -0.05 \pm 0.015$ mmol L⁻¹, $p = 5.2 \times 10^{-10}$).

Sex-specific effects of F_{ROH} . Intriguingly, for a minority of traits (13/100), the effect of F_{ROH} differs between men and women (Fig. 3c, Supplementary Data 12). For example, men who are the offspring of first cousins have 0.10 mmol L⁻¹ [95% CI 0.08–0.12] lower total cholesterol on average, while there is no significant effect in women; LDL shows a similar pattern. More generally, for these traits, the effect in men is often of greater magnitude than the effect in women, perhaps reflecting differing relationships between phenotype and fitness.

Associations most likely caused by rare, recessive variants. The use of ROH to estimate inbreeding coefficients is relatively new in inbreeding research^{11,16–19}. Earlier frequency-based estimators

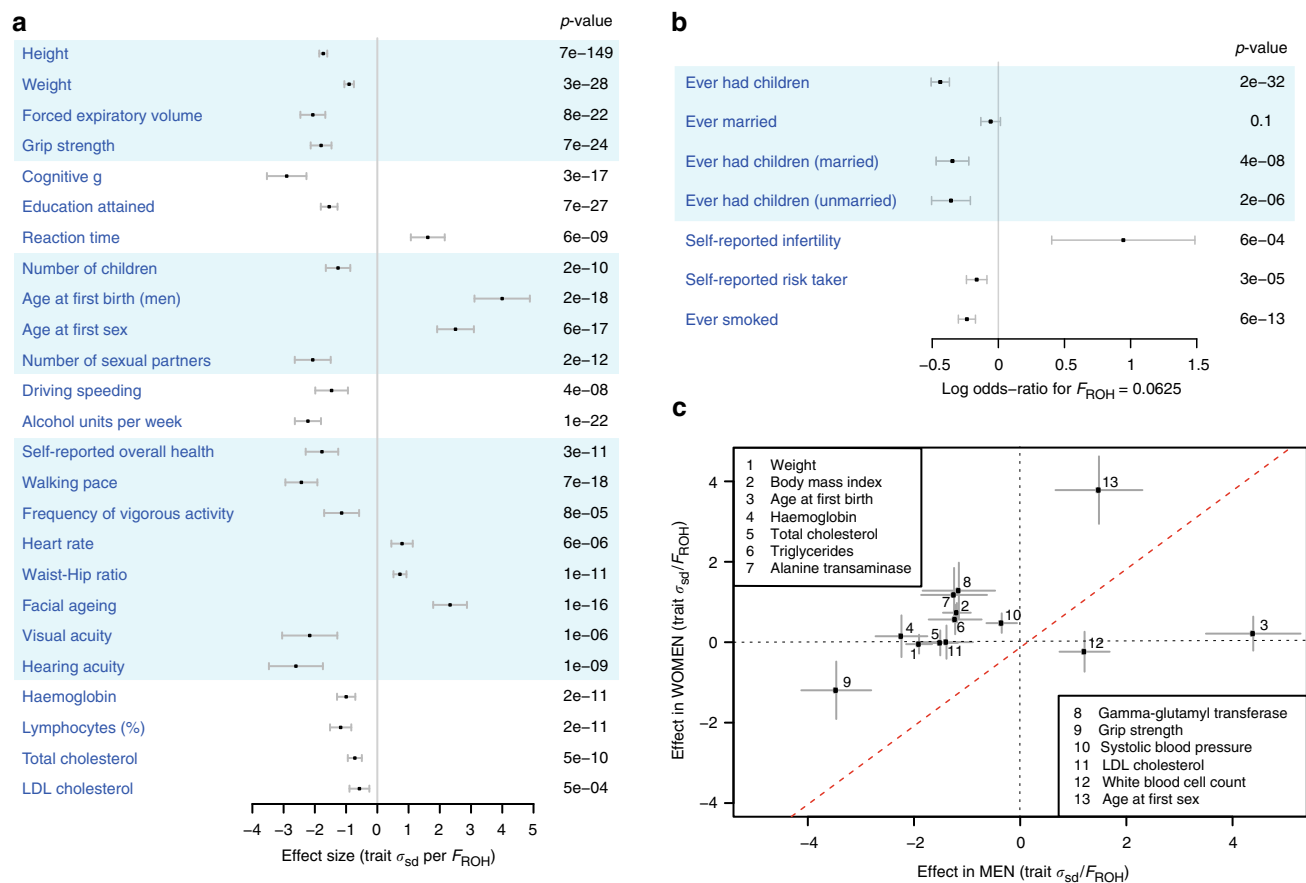


Fig. 3 Scope of inbreeding depression. **a** Effect of F_{ROH} on 25 quantitative traits. To facilitate comparison between traits, effect estimates are presented in units of within-sex standard deviations. Traits shown here reached Bonferroni-corrected significance of $p = 0.0005$ ($=0.05/100$ traits). Sample sizes, within-sex standard deviations, and effect estimates in measurement units are shown in Supplementary Data 9. FEV1 forced expiratory volume in one second. Traits are grouped by type. **b** Effect of F_{ROH} on eight binary traits with associated p values. Effect estimates are reported as $\ln(\text{Odds-Ratio})$ for the offspring of first cousins, for which $E(F_{ROH}) = 0.0625$. Self-declared infertility is shown for information, although this trait does not reach Bonferroni corrected significant ($OR_{0.0625} = 2.6 \pm 1.1$, $p = 0.0006$). Numbers of cases and controls and effect estimates for all binary traits are shown in Supplementary Data 10. **c** Sex-specificity of ROH effects. The effect of F_{ROH} in men versus that in women is shown for 13 traits for which there was evidence of significant differences in the effects between sexes. For 11 of these 13 traits the magnitude of effect is greater in men than in women. Traits such as liver enzymes levels (alanine transaminase, gamma-glutamyl transferase) show sex-specific effects of opposite sign (positive in women, negative in men), which cancel out in the overall analysis. BMI body mass index, LDL low-density lipoprotein. All errors bars represent 95% confidence intervals

such as F_{SNP} and F_{GRM} ²⁰, made use of excess marker homozygosity^{21–23} and did not require physical maps. We performed both univariate and multivariate regressions to evaluate the effectiveness of F_{ROH} against these measures. The correlations between them range from 0.13 to 0.99 and are strongest in cohorts with high average inbreeding (Supplementary Data 6, Supplementary Fig. 6). Significantly, univariate regressions of traits on both F_{SNP} and F_{GRM} show attenuated effect estimates relative to F_{ROH} (Supplementary Data 13). This attenuation is greatest in low autozygosity cohorts, suggesting that F_{ROH} is a better estimator of excess homozygosity at the causal loci (Fig. 4c).

To explore this further, we fit bivariate models with F_{ROH} and F_{GRM} as explanatory variables. For all 32 traits that were significant in the univariate analysis, we find that $\hat{\beta}_{F_{ROH}|F_{GRM}}$ is of greater magnitude than $\hat{\beta}_{F_{GRM}|F_{ROH}}$ in the conditional analysis (Fig. 4b, Supplementary Data 22). This suggests that inbreeding depression is predominantly caused by rare, recessive variants made homozygous in ROH, and not by the chance homozygosity of variants in strong LD with common SNPs (Fig. 4d, Supplementary Note 5). We also find that ROH of different

lengths have similar effects per unit length (Fig. 4a, Supplementary Fig. 11a), consistent with their having a causal effect on traits and not with confounding by socioeconomic or other factors, as shorter ROH arise from deep in the pedigree are thus less correlated with recent consanguinity.

Quantifying the scope of social confounding. Previous studies have highlighted the potential for F_{ROH} to be confounded by non-genetic factors^{6,24}. We therefore estimated the effect of F_{ROH} within various groups, between which confounding might be expected either to differ, or not be present at all.

For example, the effect of F_{ROH} on height is consistent across seven major continental ancestry groups (Supplementary Fig. 1, Supplementary Data 18), despite differing attitudes towards consanguinity, and consequently different burdens and origins of ROH. Similarly, grouping cohorts into consanguineous, more cosmopolitan, admixed and those with homozygosity due to ancient founder effects also shows consistent effects (Supplementary Fig. 2, Supplementary Data 19). Equally, categorising samples into bins of increasing F_{ROH} shows a dose-dependent response of the study traits with increased F_{ROH} (Supplementary Data 17 and

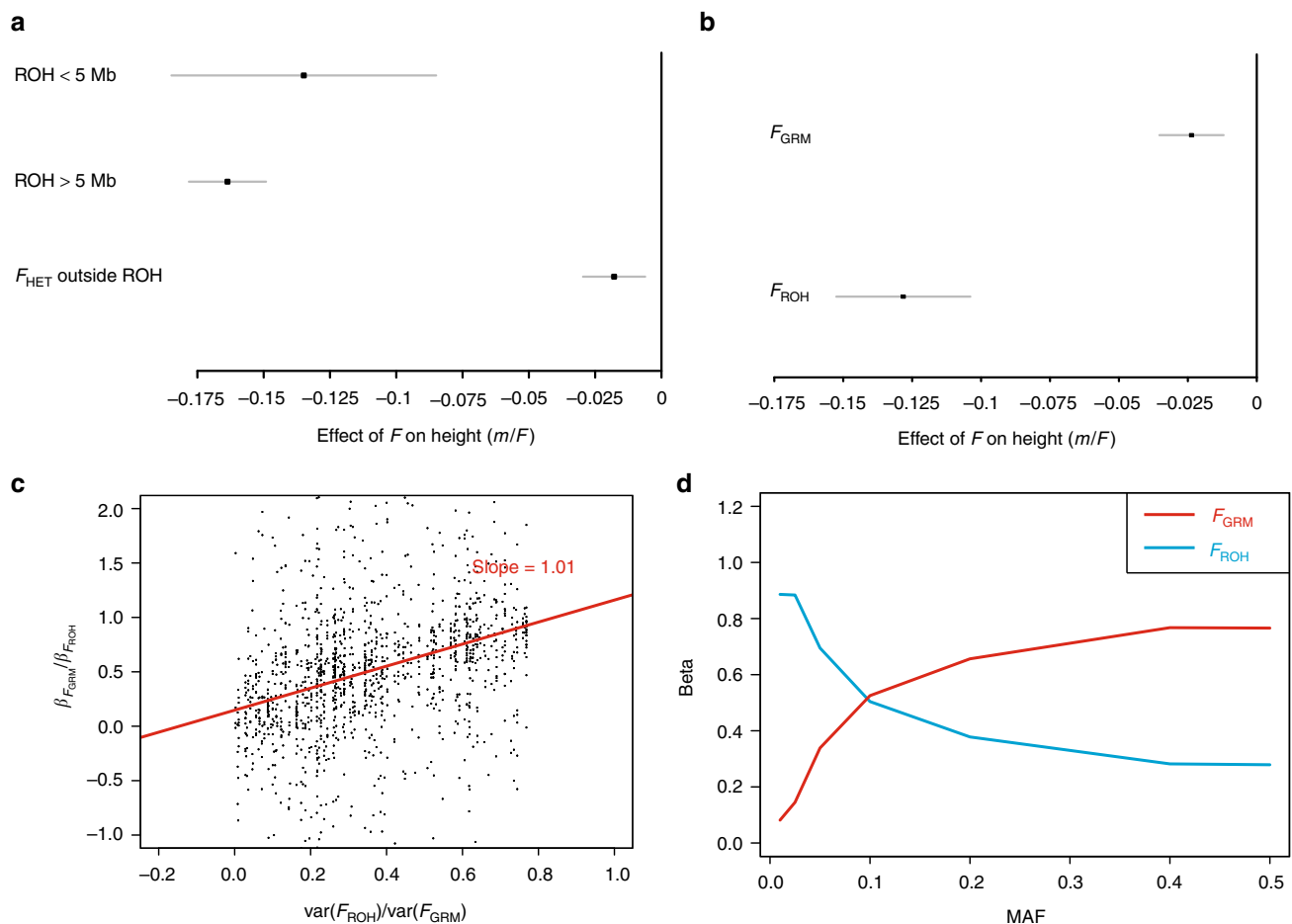


Fig. 4 Inbreeding depression caused by ROH. **a** Effect of different ROH lengths on height, compared with the effect of SNP homozygosity outside of ROH. The effects of shorter (<5 Mb) and longer (>5 Mb) ROH per unit length are similar and strongly negative, whereas the effect of homozygosity outside ROH is much weaker. The pattern is similar for other traits (Supplementary Fig. 11a; Supplementary Data 14). **b** F_{ROH} is more strongly associated than F_{GRM} in a bivariate model of height. Meta-analysed effect estimates, and 95% confidence intervals, are shown for a bivariate model of height ($\text{Height} \sim F_{\text{ROH}} + F_{\text{GRM}}$). The reduction in height is more strongly associated with F_{ROH} than F_{GRM} , as predicted if the causal variants are in weak LD with the common SNPs used to calculate F_{GRM} (Supplementary Note 5). The pattern is similar for other traits (Supplementary Fig. 15a, b; Supplementary Data 22). **c** F_{ROH} is a lower variance estimator of the inbreeding coefficient than F_{GRM} . The ratio of $\beta_{F_{\text{GRM}}} : \beta_{F_{\text{ROH}}}$ is plotted against $\frac{\text{var}(F_{\text{ROH}})}{\text{var}(F_{\text{GRM}})}$ for all traits in all cohorts. When the variation of F_{GRM} which is independent of F_{ROH} has no effect on traits, $\hat{\beta}_{F_{\text{GRM}}}$ is downwardly biased by a factor of $\frac{\text{var}(F_{\text{ROH}})}{\text{var}(F_{\text{GRM}})}$ (Supplementary Note 4). A linear maximum likelihood fit, shown in red, has a gradient consistent with unity [1.01; 95% CI 0.84–1.18], as expected when the difference between F_{GRM} and F_{ROH} is not informative about the excess homozygosity at causal variants (Supplementary Note 5). **d** F_{ROH} is a better predictor of rare variant homozygosity than F_{GRM} . The excess homozygosities of SNPs, extracted from UK Biobank imputed genotypes, were calculated at seven discrete minor allele frequencies (F_{MAF}), and regressed on two estimators of inbreeding in a bivariate statistical model (see Supplementary Note 5). The homozygosity of common SNPs is better predicted by F_{GRM} , but rare variant homozygosity is better predicted by F_{ROH} . The results from real data (Fig. 4b, Supplementary Figs 15a, b and Supplementary Data 22) are consistent with those simulated here, if the causal variants are predominantly rare. All errors bars represent 95% confidence intervals

Fig. 5a, b show the response for height and ever having children; Supplementary Figs 9a–f for all significant traits). The proportionality of these effects is consistent with a genetic cause, while it is difficult to envisage a confounder proportionally associated across the entire range of observed F_{ROH} . In particular, the highest F_{ROH} group ($F_{\text{ROH}} > 0.18$), equivalent to the offspring of first-degree relatives, are found to be, on average, 3.4 [95% CI 2.5–4.3] cm shorter and 3.1 [95% CI 2.5–3.7] times more likely to be childless than an $F_{\text{ROH}} = 0$ individual.

Next, we estimated $\beta_{F_{\text{ROH}}}$ for 7153 self-declared adopted individuals in UK Biobank, whose genotype is less likely to be confounded by cultural factors associated with the relatedness of their biological parents. For all 26 significant traits measured in this cohort, effect estimates are directionally consistent with the meta-analysis and 3 (height, walking pace and hearing acuity)

reach replication significance ($p < 0.004$). In addition, a meta-analysis of the ratio $\hat{\beta}_{F_{\text{ROH_ADOPTEE}}} : \hat{\beta}_{F_{\text{ROH}}}$ across all traits differs significantly from zero (Fig. 5c; average = 0.78, 95% CI 0.56–1.00, $p = 2 \times 10^{-12}$).

Finally, the effect of F_{ROH} was estimated in up to 118,773 individuals in sibships (full-sibling pairs, trios, etc.: $\hat{\beta}_{F_{\text{ROH_wSibs}}}$). F_{ROH} differences between siblings are caused entirely by Mendelian segregation, and are thus independent of any reasonable model of confounding. The variation of F_{ROH} among siblings is a small fraction of the population-wide variation¹¹ (Supplementary Data 5); nevertheless, 23 out of 29 estimates of $\hat{\beta}_{F_{\text{ROH_wSibs}}}$ are directionally consistent with $\hat{\beta}_{F_{\text{ROH}}}$, and two (self-reported overall health and ever having children) reach replication

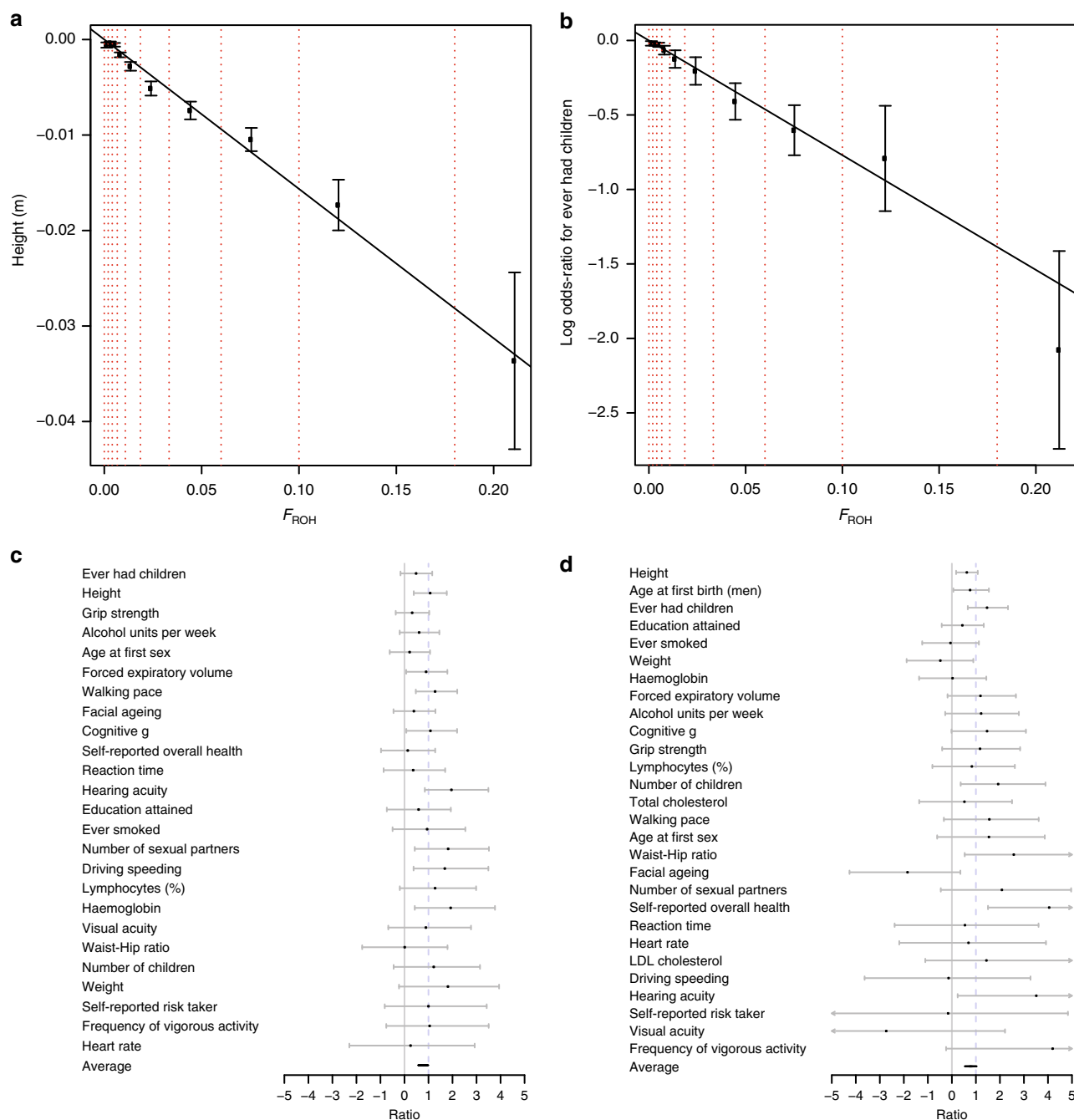


Fig. 5 Evidence ROH effects are un-confounded. **a** Linear decrease in height with increasing F_{ROH} . Average heights (in metres) is plotted in bins of increasing F_{ROH} . The limits of each bin are shown by red dotted lines, and correspond to the offspring of increasing degree unions left-to-right. The overall estimate of $\beta_{F_{ROH}}$ is shown as a solid black line. Subjects with kinship equal to offspring of full-sibling or parent-child unions are significantly shorter than those of avuncular or half-sibling unions who in turn are significantly shorter than those of first-cousin unions. **b** Linear decrease in odds of ever having children with increasing F_{ROH} . Linear model approximations of $\ln(\text{Odds-Ratio})$ for ever having children (1 = parous, 0 = childless) are plotted in bins of increasing F_{ROH} . A strong relationship is evident, extending beyond the offspring of first cousins. **c** ROH effects are consistent in adoptees. The ratios of effect estimates, $\beta_{F_{ROH}}$, between adoptees and all individuals are presented by trait. All traits are directionally consistent and overall show a strongly significant difference from zero (average = 0.78, 95% CI 0.56–1.00, $p = 2 \times 10^{-12}$). FEV1 forced expiratory volume in one second. **d** ROH effects are consistent in full siblings. The ratios of effect estimates within full siblings to effects in all individuals ($\beta_{F_{ROH_wSibs}} : \beta_{F_{ROH}}$) are presented by trait. Twenty-three of 29 estimates are directionally consistent and overall show a significant difference from zero (average = 0.78, 95% CI 0.53–1.04, $p = 7 \times 10^{-10}$). BMI body mass index. All errors bars represent 95% confidence intervals

significance. A meta-analysis of the ratio $\hat{\beta}_{F_{\text{ROH}, \text{wSibs}}} : \hat{\beta}_{F_{\text{ROH}}}$ for all traits is significantly greater than zero (Fig. 5d; average = 0.78, 95% CI 0.53–1.04, $p = 7 \times 10^{-10}$), indicating a substantial fraction of these effects is genetic in origin. However, for both adoptees and siblings, the point estimates are less than one, suggesting that non-genetic factors probably contribute a small, but significant, fraction of the observed effects.

Discussion

Our results reveal inbreeding depression to be broad in scope, influencing both complex traits related to evolutionary fitness and others where the pattern of selection is less clear. While studies of couples show optimal fertility for those with distant kinship^{25,26}, fewer have examined reproductive success as a function of individual inbreeding. Those that did are orders of magnitude smaller in size than the present study, suffer the attendant drawbacks of pedigree analysis, and have found mixed results^{27–29}. Our genomic approach also reveals that in addition to socio-demographic factors and individual choice, recessive genetic effects have a significant influence on whether individuals reproduce. The discordant effects on fertility and education demonstrate that this is not just a result of genetic correlations between the two domains³⁰.

The effects we see on fertility might be partially mediated through a hitherto unknown effect of autozygosity on decreasing the prevalence of risk-taking behaviours. Significant effects of autozygosity are observed for self-reported risk taking, speeding on motorways, alcohol and smoking behaviour, age at first sexual intercourse and number of sexual partners. Independent evidence for a shared genetic architecture between risk-taking and fertility traits comes from analysis of genetic correlations using LD-score regression in UKB (Supplementary Table 1). The core fertility traits, ever had children and number of children, are strongly genetically correlated ($r_G = 0.93$; $p < 10^{-100}$). Genetic correlations with ever-smoking and self-reported risk-taking are lower, but also significant: 0.23–0.27, $p < 10^{-10}$. Age at first sex is strongly genetically correlated both with the fertility traits, ($r_G = 0.53$ –0.57), and number of sexual partners, ever-smoking and risk-taking³⁰ ($r_G = 0.42$ –0.60).

Reproductive traits are understandable targets of natural selection, as might be walking speed, grip strength, overall health, and visual and auditory acuity. While we cannot completely exclude reverse causality, whereby a less risk-taking, more conservative, personality is associated with greater likelihood of consanguineous marriage, we note that the effects are consistent for ROH < 5 Mb, which are less confounded with mate choice, due to their more distant pedigree origins (Supplementary Fig. 11a). This group of traits also shows similar evidence for unconfounded effects in the analysis of adoptees and full siblings (Fig. 5c, d; Supplementary Data 16) and the signals remained after correcting for religious activity or education.

On the other hand, for some traits that we expected to be influenced by ROH, we observed no effect. For example, birth weight is considered a key component of evolutionary fitness in mammals, and is influenced by genomic homozygosity in deer³¹; however, no material effect is apparent here (Supplementary Data 10). Furthermore, in one case, ROH appear to provide a beneficial effect: increasing F_{ROH} significantly decreases total and LDL-cholesterol in men, and may thus be cardio-protective in this regard.

Our multivariate models show that homozygosity at common SNPs outside of ROH has little influence on traits, and that the effect rather comes from ROH over 1.5 Mb in length. This suggests that genetic variants causing inbreeding depression are almost entirely rare, consistent with the dominance hypothesis¹.

The alternative hypothesis of overdominance, whereby positive selection on heterozygotes has brought alleles to intermediate frequencies, would predict that more common homozygous SNPs outside long ROH would also confer an effect. The differential provides evidence in humans that rare recessive mutations underlie the quantitative effects of inbreeding depression.

Previous studies have shown that associations observed between F_{ROH} and traits do not prove a causal relationship^{14,24}. Traditional Genome-wide Association Studies (GWAS) can infer causality because, in the absence of population structure, genetic variants (SNPs) are randomly distributed between, and within, different social groups. However, this assumption does not hold in studies of inbreeding depression, where, even within a genetically homogeneous population, social groups may have differing attitudes towards consanguinity, and therefore different average F_{ROH} and, potentially, different average trait values. We therefore present a number of analyses that discount social confounding as a major factor in our results. Firstly, we show that the effects are consistent across diverse populations, including those where ROH burden is driven by founder effects rather than cultural practices regarding marriage. Effects are also consistent across a 20-fold range of F_{ROH} : from low levels, likely unknown to the subject, to extremely high levels only seen in the offspring of first-degree relatives. Secondly, we show that the effects of ROH are consistent in direction and magnitude among adopted individuals, and also for short ROH which are not informative about parental relatedness. Finally, we introduce a within-siblings method, independent of all confounders, that confirms a genetic explanation for most of the observed effects. Variation in F_{ROH} between siblings is caused entirely by random Mendelian segregation; we show that higher F_{ROH} siblings experience poorer overall health and lower reproductive success, as well as other changes consistent with population-wide estimates. Nevertheless, average effect sizes from both adoptees and siblings are 20% smaller than population-wide estimates, confirming the importance of accounting for social confounding in future studies of human inbreeding depression.

Our results reveal five large groups of phenotypes sensitive to inbreeding depression, including some known to be closely linked to evolutionary fitness, but also others where the connection is, with current knowledge, more surprising. The effects are mediated by ROH rather than homozygosity of common SNPs, causally implicating rare recessive variants rather than overdominance as the most important underlying mechanism. Identification of these recessive variants will be challenging, but analysis of regional ROH and in particular using whole-genome sequences in large cohorts with sufficient variance in autozygosity will be the first step. Founder populations or those which prefer consanguineous marriage will provide the most power to understand this fundamental phenomenon.

see Supplementary Data.

Methods

Overview. Our initial aim was to estimate the effect of F_{ROH} on 45 quantitative traits and to assess whether any of these effects differed significantly from zero. Previous work^{7,11} has shown that inbreeding coefficients are low in most human populations, and that very large samples are required to reliably estimate the genetic effects of inbreeding¹³. To maximise sample size, a collaborative consortium (ROHgen⁶) was established, and research groups administering cohorts with SNP chip genotyping were invited to participate. To ensure that all participants performed uniform and repeatable analyses, a semi-automated software pipeline was developed and executed locally by each research group. This software pipeline required cohorts to provide only quality-controlled genotypes (in plink binary format) and standardised phenotypes (in plain-text) and used standard software (R, PLINK^{12,32}, KING³³) to perform the analyses described below. Results from each cohort were returned to the central ROHgen analysts for meta-analysis.

During the initial meta-analysis, genotypes were released for >500,000 samples from the richly phenotyped UK Biobank (UKB)¹⁰. It was therefore decided to add a

further 34 quantitative phenotypes and 21 binary traits to the ROHgen analysis. Many of these additional traits were unique to UKB, although 7 were also available in a subset of ROHgen cohorts willing to run additional analyses. In total, the effect of F_{ROH} was tested on 100 traits and therefore experiment-wise significance was defined as 5×10^{-4} ($=0.05/100$).

Cohort recruitment. In total, 119 independent, genetic epidemiological study cohorts were contributed to ROHgen. Of these, 118 were studies of adults and contributed multiple phenotypes, while 1 was a study of children and contributed only birth weight. To minimise any potential confounding or bias caused by within-study heterogeneity, studies were split into single-ethnicity sub-cohorts wherever applicable. Each sub-cohort was required to use only one genotyping array and be of uniform ancestry and case-status. For example, if a study contained multiple distinct ethnicities, sub-cohorts of each ancestry were created and analysed separately. At minimum, ancestry was defined on a sub-continental scale (i.e. European, African, East Asian, South Asian, West Asian, Japanese, and Hispanic were always analysed separately) but more precise separation was used when deemed necessary, for example, in cohorts with large representation of Ashkenazi Jews. In case-control studies of disease, separate sub-cohorts were created for cases and controls and phenotypes associated with disease status were not analysed in the case cohort: for example, fasting plasma glucose was not analysed in Type 2 diabetes case cohorts. Occasionally, cohorts had been genotyped on different SNP genotyping microarrays and these were also separated into sub-cohorts. There was one exception (deCODE) to the single microarray rule, where the intersection between all arrays used exceeded 150,000 SNPs. In this cohort the genotype data from all arrays was merged since the correspondence between F_{ROH} for the individual arrays and F_{ROH} the intersection dataset was found to be very strong ($\beta_{\text{merged,hap}} = 0.98$, $r^2 = 0.98$; $\beta_{\text{merged,omni}} = 0.97$, $r^2 = 0.97$). Dividing studies using these criteria yielded 234 sub-cohorts. Details of phenotypes contributed by each cohort are available in Supplementary Data 4.

Ethical approval. Data from 119 independent genetic epidemiology studies were included. All subjects gave written informed consent for broad-ranging health and genetic research and all studies were approved by the relevant research ethics committees or boards. PubMed references are given for each study in Supplementary Data 2.

Genotyping. All samples were genotyped on high-density (minimum 250,000 markers), genome-wide SNP microarrays supplied by Illumina or Affymetrix. Genotyping arrays with highly variable genomic coverage (such as Exome chip, MetaboChip, or Immunochip) were judged unsuitable for the ROH calling algorithm and were not permitted. Imputed genotypes were also not permitted; only called genotypes in PLINK binary format were accepted. Each study applied their own GWAS quality controls before additional checks were made in the common analysis pipeline: SNPs with >3% missingness or MAF <5% were removed, as were individuals with >3% missing data. Only autosomal genotypes were used for the analyses reported here. Additional, cohort-specific, genotyping information is available in Supplementary Data 2.

Phenotyping. In total, results are reported for 79 quantitative traits and 21 binary traits. These traits were chosen to represent different domains of health and reproductive success, with consideration given to presumed data availability. Many of these traits have been the subject of existing genome-wide association meta-analyses (GWAMA), and phenotype modelling, such as inclusion of relevant covariates, was copied from the relevant consortia (GIANT for anthropometry, EGG for birth weight, ICBP for blood pressures, MAGIC for glycaemic traits, CHARGE-Cognitive, -Inflammation & -Haemostasis working groups for cognitive function, CRP, fibrinogen, CHARGE-CKDgen for eGFR, CHARGE-ReproGen for ages at menarche and menopause, Blood Cell & HaemGen for haematology, GUGC for urate, RRgen, PRIMA, QRS & QT-IGC for electrocardiography, GLGC for classical lipids, CREAM for spherical equivalent refraction, Spirometa for lung function traits, and SSGAC for educational attainment and number of children ever born). Further information about individual phenotype modelling is available in Supplementary Note 1 and Supplementary Data 8.

ROH calling. Runs of homozygosity (ROH) of >1.5 Mb in length were identified using published methods^{6,11}. In summary, SNPs with minor allele frequencies below 5% were removed, before continuous ROH SNPs were identified using PLINK with the following parameters: homozyg-window-snp 50; homozyg-snp 50; homozyg-kb 1500; homozyg-gap 1000; homozyg-density 50; homozyg-window-missing 5; homozyg-window-het 1. No linkage disequilibrium pruning was performed. These parameters have been previously shown to call ROH that correspond to autozygous segments in which all SNPs (including those not present on the chip) are homozygous-by-descent, not chance arrangements of independent homozygous SNPs, and inbreeding coefficient estimates calculated by this method (F_{ROH}) correlate well with pedigree-based estimates (F_{PED})¹¹. Moreover, they have also been shown to be robust to array choice⁶.

Calculating estimators of F . For each sample, two estimates of the inbreeding coefficient (F) were calculated, F_{ROH} and F_{SNP} . We also calculated three additional measures of homozygosity: $F_{\text{ROH}<5\text{Mb}}$, $F_{\text{ROH}>5\text{Mb}}$ and $F_{\text{SNP, outsideROH}}$.

F_{ROH} is the fraction of each genome in ROH >1.5 Mb. For example, in a sample for which PLINK had identified n ROH of length l_i (in Mb), $i \in \{1..n\}$, then F_{ROH} was then calculated as

$$F_{\text{ROH}} = \frac{\sum_{i=1}^n l_i}{3Gb}, \quad (1)$$

where $F_{\text{ROH}<5\text{Mb}}$ and $F_{\text{ROH}>5\text{Mb}}$ are the genomic fractions in ROH of length >5 Mb, and in ROH of length <5 Mb (but >1.5 Mb), respectively, and the length of the autosomal genome is estimated at 3 gigabases (Gb). It follows from this definition that

$$F_{\text{ROH}} = F_{\text{ROH}>5\text{Mb}} + F_{\text{ROH}<5\text{Mb}}. \quad (2)$$

Single-point inbreeding coefficients can also be estimated from individual SNP homozygosity without any reference to a genetic map. For comparison with F_{ROH} , a method of moments estimate of inbreeding coefficient was calculated³⁴, referred to here as F_{SNP} , and implemented in PLINK by the command `-het`.

$$F_{\text{SNP}} = \frac{O(\text{HOM}) - E(\text{HOM})}{N - E(\text{HOM})}, \quad (3)$$

where $O(\text{HOM})$ is the observed number of homozygous SNPs, $E(\text{HOM})$ is the expected number of homozygous SNPs, i.e. $\sum_{i=1}^N (1 - 2p_i q_i)$, and N is the total number of non-missing genotyped SNPs.

F_{ROH} and F_{SNP} are strongly correlated, especially in cohorts with significant inbreeding, since both are estimates of F . To clarify the conditional effects of F_{ROH} and F_{SNP} , an additional measure of homozygosity, $F_{\text{SNP, outsideROH}}$, was calculated to describe the SNP homozygosity observed outside ROH.

$$F_{\text{SNP, outsideROH}} = \frac{O'(\text{HOM}) - E'(\text{HOM})}{N' - E'(\text{HOM})}, \quad (4)$$

where

$$O'(\text{HOM}) = O(\text{HOM}) - N_{\text{SNP, ROH}}, \quad (5)$$

$$E'(\text{HOM}) = \left(\frac{N - N_{\text{ROH}}}{N} \right) * E(\text{HOM}), \quad (6)$$

$$N' = N - N_{\text{ROH}} \quad (7)$$

And $N_{\text{SNP, ROH}}$ is the number of homozygous SNPs found in ROH. Note that:

$$F_{\text{SNP, outsideROH}} \approx F_{\text{SNP}} - F_{\text{ROH}} \quad (8)$$

A further single point estimator of the inbreeding coefficient, described by Yang et al.²⁰ as \hat{F}^{III} , is implemented in PLINK by the parameter `-ibc` (Fhat3) and was also calculated for all samples.

$$F_{\text{GRM}} = \hat{F}^{\text{III}} = \frac{1}{N} \sum_{i=1}^N \frac{(x_i^2 - (1 + 2p_i)x_i + 2p_i^2)}{2p_i(1 - p_i)}, \quad (9)$$

where N is the number of SNPs, p_i is the reference allele frequency of the i th SNP in the sample population and x_i is the number of copies of the reference allele.

Effect size estimates for quantitative traits. In each cohort of n samples, for each of the quantitative traits measured in that cohort, trait values were modelled by

$$y = \beta_{F_{\text{ROH}}} * F_{\text{ROH}} + \mathbf{Xb} + \boldsymbol{\varepsilon}, \quad (10)$$

where \mathbf{y} is a vector ($n \times 1$) of measured trait values, $\beta_{F_{\text{ROH}}}$ is the unknown scalar effect of F_{ROH} on the trait, \mathbf{F}_{ROH} is a known vector ($n \times 1$) of individual F_{ROH} , \mathbf{b} is a vector ($m \times 1$) of unknown fixed covariate effects (including a mean, μ), \mathbf{X} is a known design matrix ($n \times m$) for the fixed effects, and $\boldsymbol{\varepsilon}$ is an unknown vector ($n \times 1$) of residuals.

The m fixed covariates included in each model were chosen with reference to the leading GWAMA consortium for that trait and are detailed in Supplementary Data 8. For all traits, these covariates included: age (and/or year of birth), sex, and at least the first 10 principal components of the genomic relatedness matrix (GRM). Where necessary, additional adjustments were made for study site, medications, and other relevant covariates (Supplementary Data 3).

For reasons of computational efficiency, it was decided to solve Eq. (10) in two steps. In the first step, the trait (\mathbf{y}) was regressed on all fixed covariates to obtain the maximum likelihood solution of the model:

$$\mathbf{y} = \mathbf{Xb} + \boldsymbol{\varepsilon}'. \quad (11)$$

All subsequent analyses were performed using the vector of trait residuals $\boldsymbol{\varepsilon}'$, which may be considered as the trait values corrected for all known covariates.

In cohorts with a high degree of relatedness, mixed-modelling was used to correct for family structure, although, because ROH are not narrow-sense heritable, this was considered less essential than in Genome-Wide Association Studies. Equation (11) becomes

$$\mathbf{y} = \mathbf{Xb} + \mathbf{u} + \boldsymbol{\varepsilon}', \quad (12)$$

where \mathbf{u} is an unknown vector ($n \times 1$) of polygenic effects with multivariate normal distribution of mean 0 and covariance matrix $\sigma_g^2 \mathbf{A}$, where \mathbf{A} is the genomic relationship matrix (GRM). In these related cohorts, a GRM was calculated using PLINK v1.9 and Grammar+ residuals of Eq. (12) were estimated using GenABEL³⁵. These Grammar+ residuals (ϵ') were used in subsequent analyses.

To estimate $\beta_{F_{ROH}}$ for each trait, trait residuals were regressed on F_{ROH} to obtain the maximum likelihood (ML) solution of the model

$$\epsilon' = \mu + \beta_{F_{ROH}} * F_{ROH} + \epsilon. \quad (13a)$$

The sex-specific estimates of $\beta_{F_{ROH}}$ (Supplementary Data 12) were obtained from Eq. (13) applied to the relevant sex.

For all traits, a corresponding estimates of $\beta_{F_{SNP}}$ and $\beta_{F_{GRM}}$ were obtained from the models

$$\epsilon' = \mu + \beta_{F_{SNP}} * F_{SNP} + \epsilon, \quad (13b)$$

$$\epsilon' = \mu + \beta_{F_{GRM}} * F_{GRM} + \epsilon \quad (14)$$

and the effects of different ROH lengths and of SNP homozygosity (Fig. 4b) were obtained from the model

$$\epsilon' = \mu + \left(\beta_1 * F_{SNP_{outsideROH}} \right) + \left(\beta_2 * F_{ROH < 5Mb} \right) + \left(\beta_3 * F_{ROH > 5Mb} \right) + \epsilon \quad (15)$$

Effect size estimates for binary traits. Binary traits were analysed by two methods. The primary estimates of $\beta_{F_{ROH}}$ (Fig. 3b and Supplementary Data 10) were obtained from full logistic models:

$$g(E[y]) = \mathbf{X}\beta, \quad (16)$$

where $g()$ is the link function (logit), and where F_{ROH} and all applicable covariates (Supplementary Datas 3, 8) were fitted simultaneously. Mixed modelling for family structure was not attempted in the logistic models since an accepted method was not apparent.

For all subsequent results, y was scaled by $1/\sigma_y^2$ and analysed by linear models, as for quantitative traits, including mixed-modelling where appropriate for family studies. This method of estimating binary traits with simple linear models gives asymptotically unbiased estimates of $\beta_{F_{ROH}}$ and $se(\beta_{F_{ROH}})$ on the $\ln(\text{Odds-Ratio})$ scale³⁶. For all significant binary traits, a comparison of $\hat{\beta}_{F_{ROH}}$ from the full model with $\hat{\beta}_{F_{ROH}}$ from the linear model approximation is presented in Supplementary Fig. 8.

To give $\hat{\beta}_{F_{ROH}}$ a more tangible interpretation, effect estimates are frequently quoted in the text as $\beta_{0.0625}$, i.e. the estimated effect in the offspring of first cousins, where 6.25% of the genome is expected to be autozygous.

Religiosity and educational attainment as additional covariates. To assess the importance of potential social confounders, proxy measures of socio-economic status and religiosity were separately included in Eq. (13) as additional covariates. The modified effect estimates ($\hat{\beta}_{F_{ROH}}$) were tested for significance (Supplementary Data 20) and compared to the uncorrected estimates ($\beta_{F_{ROH}}$) (Supplementary Fig. 10a, b).

Since Educational Attainment (EA) was measured in many cohorts, this was chosen as the most suitable proxy for socio-economic status. However, since F_{ROH} is known to affect EA directly⁶ any change in $\beta_{F_{ROH}}$ when conditioning on EA cannot be assumed to be entirely due to environmental confounding.

The analysis of religiosity was only carried out in UKB, where a rough proxy was available. Although no direct questions about religious beliefs were included, participants were asked about their leisure activities. In response to the question *Which of the following do you attend once a week or more often? (You can select more than one)*, 15.6% of UKB participants selected *Religious Group* from one of the seven options offered. In the models described, religiosity was coded as 1 for those who selected *Religious Group* and 0 for those who did not. Although this is likely to be an imperfect measure of actual religious belief it is currently the best available in a large dataset.

Assortative mating. Humans are known to mate assortatively for a number of traits including height and cognition³⁷, and so we sought to investigate if this could influence our results, for example, by the trait extremes being more genetically similar and thus the offspring more homozygous. We see no evidence for an effect of assortative mating on autozygosity, however. Firstly, a polygenic risk score for height (see Supplementary Note 1), which explains 18.7% of the phenotypic variance in height, was not associated with F_{ROH} ($p = 0.77$; Supplementary Fig. 5). Secondly, linear relationships between traits and autozygosity extend out to very high F_{ROH} individuals (Supplementary Figs. 9a–f). Samples in the highest F_{ROH} group are offspring of genetically similar parents, very likely first or second degree relatives and, for example, the height of these samples is on average 3.4 cm [95% CI 2.5–4.3] shorter than the population mean. Assortative mating would suggest this

height deficit has been inherited from genetically shorter parents, but this would require an implausibly strong relationship between short stature and a propensity to marry a very close relative. Thirdly, the sex-specific effects we observe could only be explained by assortative mating if the additive heritability of these traits also differed by gender.

Average trait values in groups of similar F_{ROH} . In each cohort individuals were allocated to one of ten groups of similar F_{ROH} . The bounds of these groups were the same for all cohorts, specifically {0, 0.002, 0.0041, 0.0067, 0.0108, 0.0186, 0.0333, 0.06, 0.10, 0.18 and 1.0}. Within each group the mean trait residual (ϵ') and mean F_{ROH} were calculated, along with their associated standard errors. Within each cohort the expectation of ϵ' is zero at the mean F_{ROH} , however as mean F_{ROH} varies between cohorts (Fig. 2, Supplementary Data 5) it was necessary to express ϵ' relative to a common F_{ROH} before meta-analysis. Hence, for this analysis only, the trait residuals (ϵ') were expressed relative to the $F_{ROH} = 0$ intercept, i.e. by subtracting μ from Eq. (13).

Effect of F_{ROH} within adoptees. We compared $\beta_{F_{ROH_ADOPTEE}}$ to cross-cohort $\beta_{F_{ROH}}$, not that from UKB alone, as we consider the latter to be a noisy estimate of the former; estimates in UKB are consistent with those from meta-analysis.

Effect of F_{ROH} within full-sibling families. In a subset of cohorts, with substantial numbers of related individuals, further analyses were performed to investigate the effect of F_{ROH} within full-sibling families. In each of these cohorts, all second-degree, or closer, relatives were identified using KING (parameters: related-degree 2). Full-siblings were then selected as relative pairs with genomic kinship >0.175 and IBS0 >0.001 . This definition includes monozygotic twins, who were intentionally considered as part of full-sibling families. Although monozygotic twins are expected to have identical F_{ROH} , they may not have identical trait values, and including additional trait measurements decreases the sampling error of the within-family variance estimate, hence increasing statistical power. Dizygotic twins were also included.

For each individual (j) with identified siblings, the values of F_{ROH} and trait residual (ϵ') were calculated relative to their family mean (and called $F_j^{ROH_wSibs}$ and ϵ_j^{wSibs} , respectively), i.e. for individual j with n full-siblings S_k where $k \in \{1..n\}$

$$F_j^{ROHwSibs} = F_j^{ROH} - \frac{1}{(n+1)} \sum_{i \in \{j, S_k\}} F_i^{ROH}, \quad (17)$$

$$\epsilon_j^{wSibs} = \epsilon_j' - \frac{1}{(n+1)} \sum_{i \in \{j, S_k\}} \epsilon_i'. \quad (18)$$

The effect of F_{ROH} within-full-siblings ($\beta_{F_{ROH_wSibs}}$) was estimated by linear regression of ϵ^{wSibs} on F^{ROH_wSibs} .

Importantly, the variation of F_{ROH} within full-siblings is entirely caused by differences in Mendelian segregation, and is therefore completely independent of all possible confounders. Hence, the effect estimates obtained by this method are estimates of the genetic effects of F_{ROH} , unbiased by any possible confounder. Since confounding by social factors is a major concern in this field, methods that can definitively exclude this possibility are of critical importance.

Between-cohort meta-analysis. As is typical in genome-wide association meta-analyses (GWAMA), genetic effects were estimated within single-ethnicity sub-cohorts, and meta-analysis of the within-cohort effect sizes was used to combine results³⁸. This established method eliminates any potential confounding caused by between-cohort associations between F_{ROH} and traits.

Each cohort returned estimates and standard errors of: $\beta_{F_{ROH}}$,

$\beta_{F_{SNP}}$, $\beta_{F_{ROH > 5Mb}}$, $\beta_{F_{ROH < 5Mb}}$, $\beta_{F_{outsideROH}}$, $\beta_{F_{ROH_wSibs}}$, as well as trait means ($\bar{\epsilon}$) and standard errors within each of 10 F_{ROH} bins. The between-cohort mean of each of these 16 estimates was then determined by fixed-effect, inverse-variance meta-analysis using the R package metafor³⁹. Results shown in Figs. 3–5 are meta-analysed averages of the within-cohort effects.

The meta-analysis was also run for various subsets of cohorts, stratified by ancestry as defined in Supplementary Data 18. Meta-analysis estimates from these groupings are shown in Supplementary Fig. 1.

Median and 95% CI of a ratio. In the analyses of adoptees (Fig. 5c), siblings (Fig. 5d) and potential confounders (Supplementary Figs. 10a, b) we wished to compare the effect estimates ($\beta_{F_{ROH}}$) from two different methods across a wide range of traits. The units of $\beta_{F_{ROH}}$ differ by trait so, to allow comparison across all traits, the unitless ratio of effect size estimates was calculated (for example $\beta_{F_{ROH_wSibs}} : \beta_{F_{ROH}}$). Figure 5c, d and Supplementary Figs. 10a, b show the medians and 95% CI of these ratios. These were determined empirically by bootstrap since, although formulae exist for the mean and standard error of a ratio⁴⁰, the assumption of normality is violated when $\beta_{F_{ROH}}/se(\beta_{F_{ROH}})$ is not large.

Genetic correlations in UK Biobank. Genetic correlations were calculated using LD-Score Regression⁴¹, implemented in LDSC v1.0.0 (<https://github.com/bulik/ldsc>). Summary statistics were parsed using default parameters in the LDSC

'munge_sumstats.py' script, extracting only variants present in the HapMap 3 reference panel.

Accuracy of F_{ROH} measures of inbreeding effects. A recent paper suggested that ROH may overestimate inbreeding effects by as much as 162%⁴²; however, this could only be the case if F_{ROH} underestimates excess homozygosity at the causal loci by at least 162%. We do not believe this to be the case since the maximum F_{ROH} measured in many cohorts is around 0.25 (the expectation in the offspring of first-degree relatives), and the effect size estimates from these samples are consistent with the overall estimates (Fig. 5c, d and Supplementary Fig. 9a–f). We note that Yengo et al. applied the ROH calling parameters used here to imputed data. These parameters have been validated for called genotype data⁶ but not, to our knowledge, for the higher SNP density and error rate of imputed data (see also Supplementary Note 4). The simple method for detecting ROH used here was well suited to our study, since it could be easily implemented on over one million samples, and most of the variation in F_{ROH} is caused by easily-identified long ROH.^{43–45}

Reporting summary. Further information on research design is available in the Nature Research Reporting Summary linked to this article.

Data availability

The meta-analysed data which support these findings are available as Supplementary Data files. Cohort-level summary statistics underlying all figures and tables are available in a publicly accessible dataset (<https://doi.org/10.6084/m9.figshare.9731087>). In the majority of cases we do not have consent to share individual-level data, although for UK Biobank this is available on request from <https://www.ukbiobank.ac.uk/>.

Received: 1 November 2018; Accepted: 30 August 2019;

Published online: 31 October 2019

References

- Charlesworth, D. & Willis, J. H. The genetics of inbreeding depression. *Nat. Rev. Genet.* **10**, 783–796 (2009).
- Bittles, A. H. & Black, M. L. Consanguinity, human evolution, and complex diseases. *Proc. Natl. Acad. Sci.* **107**, 1779–1786 (2010).
- Nakatsuka, N. et al. The promise of discovering population-specific disease-associated genes in South Asia. *Nat. Genet.* **49**, 1403–1407 (2017).
- Narasimhan, V. M. et al. Health and population effects of rare gene knockouts in adult humans with related parents. *Science* **352**, 474–477 (2016).
- Saleheen, D. et al. Human knockouts and phenotypic analysis in a cohort with a high rate of consanguinity. *Nature* **544**, 235–239 (2017).
- Joshi, P. K. et al. Directional dominance on stature and cognition in diverse human populations. *Nature* **523**, 459–462 (2015).
- Kirin, M. et al. Genomic runs of homozygosity record population history and consanguinity. *PLoS ONE* **5**, e13996 (2010).
- Pemberton, T. J. et al. Genomic patterns of homozygosity in worldwide human populations. *Am. J. Hum. Genet.* **91**, 275–292 (2012).
- Ceballos, F. C., Joshi, P. K., Clark, D. W., Ramsay, M. & Wilson, J. F. Runs of homozygosity: windows into population history and trait architecture. *Nat. Rev. Genet.* **19**, 220–234 (2018).
- Sudlow, C. et al. UK Biobank: an open access resource for identifying the causes of a wide range of complex diseases of middle and old age. *PLoS Med.* **12**, e1001779 (2015).
- McQuillan, R. et al. Runs of homozygosity in European populations. *Am. J. Hum. Genet.* **83**, 359–372 (2008).
- Purcell, S. & Chang, C. *PLINK 1.9*. www.cog-genomics.org/plink/1.9/.
- McQuillan, R. et al. Evidence of inbreeding depression on human height. *PLoS Genet.* **8**, e1002655 (2012).
- Abdellaoui, A. et al. Association between autozygosity and major depression: stratification due to religious assortment. *Behav. Genet.* **43**, 455–467 (2013).
- Bashir, J. Effects of inbreeding on cognitive performance. *Nature* **266**, 440–442 (1977).
- Broman, K. W. & Weber, J. L. Long homozygous chromosomal segments in reference families from the centre d'Etude du polymorphisme humain. *Am. J. Hum. Genet.* **65**, 1493–1500 (1999).
- Gibson, J., Morton, N. E. & Collins, A. Extended tracts of homozygosity in outbred human populations. *Hum. Mol. Genet.* **15**, 789–795 (2006).
- Lencz, T. et al. Runs of homozygosity reveal highly penetrant recessive loci in schizophrenia. *Proc. Natl. Acad. Sci. USA* **104**, 19942–19947 (2007).
- Keller, M. C., Visscher, P. M. & Goddard, M. E. Quantification of inbreeding due to distant ancestors and its detection using dense single nucleotide polymorphism data. *Genetics* **189**, 237–249 (2011).
- Yang, J., Lee, S. H., Goddard, M. E. & Visscher, P. M. GCTA: a tool for genome-wide complex trait analysis. *Am. J. Hum. Genet.* **88**, 76–82 (2011).
- Coulson, T., Albon, S., Jon, S. & Pemberton, J. Microsatellite loci reveal sex-dependent responses to inbreeding and outbreeding in Red Deer calves. *Evolution* **53**, 1951–1960 (1999).
- Slate, J. & Pemberton, J. M. Comparing molecular measures for detecting inbreeding depression. *J. Evolutionary Biology* **15**, 20–31 (2002).
- Campbell, H. et al. Effects of genome-wide heterozygosity on a range of biomedically relevant human quantitative traits. *Hum. Mol. Genet.* **16**, 233–241 (2007).
- Abdellaoui, A. et al. Educational attainment influences levels of homozygosity through migration and assortative mating. *PLoS ONE* **10**, e0118935 (2015).
- Helgason, A., Pálsson, S., Guobjartsson, D. F., Kristjánsson, P. & Stefánsson, K. An association between the kinship and fertility of human couples. *Science* **319**, 813–816 (2008).
- Bittles, A. H., Grant, J. C., Sullivan, S. G. & Hussain, R. Does inbreeding lead to decreased human fertility? *Ann. Hum. Biol.* **29**, 111–130 (2002).
- Alvarez, G., Ceballos, F. C. & Berra, T. M. Darwin was right: inbreeding depression on male fertility in the Darwin family. *Biol. J. Linn. Soc.* **114**, 474–483 (2015).
- Ober, C., Hyslop, T. & Hauck, W. W. Inbreeding effects on fertility in humans: evidence for reproductive compensation. *Am. J. Hum. Genet.* **64**, 225–231 (1999).
- Robert, A., Toupance, B., Tremblay, M. & Heyer, E. Impact of inbreeding on fertility in a pre-industrial population. *Eur. J. Hum. Genet.* **17**, 673–681 (2009).
- Day, F. R. et al. Physical and neuro-behavioural determinants of reproductive onset and success Europe PMC Funders Group. *Nat. Genet.* **48**, 617–623 (2016).
- Huisman, J., Kruuk, L. E. B., Ellis, P. A., Clutton-Brock, T. & Pemberton, J. M. Inbreeding depression across the lifespan in a wild mammal population. *Proc. Natl. Acad. Sci.* **113**, 3585–3590 (2016).
- Chang, C. C. et al. Second-generation PLINK: rising to the challenge of larger and richer datasets. *GigaScience* **4**, 7 (2015).
- Manichaikul, A. et al. Robust relationship inference in genome-wide association studies. *Bioinformatics* **26**, 2867–2873 (2010).
- Wright, S. Genetics of populations. *Encyclopedia Britannica* Vol. 10, 111–A–D–112 (1948).
- Belongova, N. M., Svishcheva, G. R., van Duijn, C. M., Aulchenko, Y. S. & Axenovich, T. I. Region-based association analysis of human quantitative traits in related individuals. *PLoS ONE* **8**, e65395 (2013).
- Cook, J. P., Mahajan, A. & Morris, A. P. Guidance for the utility of linear models in meta-analysis of genetic association studies of binary phenotypes. *Eur. J. Hum. Genet.* **25**, 240–245 (2017).
- Buss, D. *The Evolution of Desire: Strategies of Human Mating*. Vol. 15 (Basic Books, 2003).
- Okbay, A. et al. Genome-wide association study identifies 74 loci associated with educational attainment. *Nature* **533**, 539–542 (2016).
- Viechtbauer, W. Conducting meta-analyses in R with the metafor Package. *J. Stat. Softw.* **36**, 1–48 (2010).
- Fieller, E. C. Some problems in interval estimation. *J. R. Stat. Soc. Ser. B* **16**, 175–185 (1954).
- Bulik-Sullivan, B. et al. An atlas of genetic correlations across human diseases and traits. *Nat. Genet.* **47**, 1236–1241 (2015).
- Yengo, L. et al. Detection and quantification of inbreeding depression for complex traits from SNP data. *Proc. Natl. Acad. Sci.* **114**, 8602–8607 (2017).
- Kardos, M., Nietlisbach, P. & Hedrick, P. W. How should we compare different genomic estimates of the strength of inbreeding depression? *Proc. Natl. Acad. Sci. USA* **115**, E2492–E2493 (2018).
- Gazal, S. et al. Inbreeding coefficient estimation with dense SNP data: comparison of strategies and application to HapMap III. *Hum. Hered.* **77**, 49–62 (2014).
- Johnson, E. C., Evans, L. M. & Keller, M. C. Relationships between estimated autozygosity and complex traits in the UK Biobank. *PLoS Genet.* **14**, e1007556 (2018).
- Keller, L. F. & Waller, D. M. Inbreeding effects in wild populations. *Trends Ecol. Evol.* **17**, 230–241 (2002).

Acknowledgements

This paper is the work of the ROHgen consortium. We thank the Sigma T2D Consortium, whose members are detailed in Supplementary Note 3. We thank the UK Biobank Resource, approved under application 19655; we acknowledge funding from the UK Medical Research Council Human Genetics Unit and MRC Doctoral Training Programme in Precision Medicine. We also thank Neil Robertson, Wellcome Trust Centre for Human Genetics, Oxford, for use of his author details management software, Authorial. Finally, we thank all the participants, researchers and funders of ROHgen cohorts. Cohort-specific acknowledgements are in Supplementary Data 2; personal acknowledgements and disclosures are in Supplementary Note 2. We thank Rachel Edwards for administrative assistance.

Author Contributions

Directed consortium: T.E., P.K.J. and J.F.W. Central analyst: D.W.C., Y.O., N. Pirastu and P.K.J. Cohort PI: C.A.A.-S., M.L.A., T.A., F.A., E.B., G.J.d.B., E.P.B., S. Chanock, Y.-D.I.C., Z.C., R.M.v.D., M.S.D., N.D., P.E., B.I.F., C.A. Haiman, D.A.v.H., I.H., M.A.I., P.J., T. Kessler, K.-T.K., D.P.V.d.K., W.-P.K., J. Kuusisto, C.L., D.A.L., L.L., T.A.M., Y. Murakami, K.K.O., L.O., O.P., N. Poulter, P.P.P., L.Q.-M., K.R., D.C.R., S.S.R., P.M.R., L.J.S., P.J.S., W.H.-H.S., A. Stanton, J.M.S., L. Straker, T.T.-L., J.H.V., V.V., Y.X.W., N.J.W., C.S. Y., J.-M.Y., F.W.A., S.J.L.B., D.M.B., D.A.B., L.H.v.d.B., S.I.B., D.B., C. Bouchard, M.J.C., J.C.C., G.R.C., C.-Y.C., M. Ciullo, M. Cornelis, D. Cusi, G.D.-S., I.D., C.M.v.D., D.E., J. Erdmann, J.G.E., E.E., M.K.E., B.F., M.F., A.F., Y.F., P. Gasparini, C. Gieger, C. Gonzalez, S.F.A.G., L.R.G., L.G., V.G., U.G., A. Hamsten, P.v.d.H., C.-K.H., H. Hochner, S.C.H., V.W.V.J., Å.J., J.B.J., J.W.J., J.J., J. Kaprio, S.L.K., F.K., M. Kumari, M. Laakso, M. Laudes, W.L., N.G.M., W. März, G. Matullo, M.I.M., T.R.M., A. Metspalu, B.F.M., K.L.M., G.W.M., D.M.-K., P.B.M., K.E.N., C.O., A.J.O., C. Palmer, G.G.P., E.P., C.E.P., L.P., M. Pirastu, D.J.P., D.P., B.M.P., C.R., J.I.R., I.R., D.K.S., R.S., H. Schunkert, A.R.S., N. Small, E.-S.T., N.J.T., D.T., T.T., P.V., D.R.W., T.-Y.W., J.W., A.B.Z., M. Perola, P.K.M., A.G.U., J.S.K., D.I.C., R.J.F.L., N.F., C.H., J.R.B.P., T.E., K. Stefansson, M. Kubo, J.F.W. Cohort analyst: D.W.C., Y.O., K.H.S.M., D.M., I.G., H.M., K.L., J.H.Z., P.D., R.R., C. Schurmann, X.G., F. Giulianini, W. Zhang, C.M.-G., R.K., Y.B., T.M.B., C. Baumbach, G.B., M.J.B., M. Brumat, J.-F.C., D.L.C., D.A.E., C.F., H.G., M. Germain, S.D.G., H.G.d.H., S.E.H., E.H., A.H.-C., C.L., E.J., Y.J., T. Kacprowski, T. Karlsson, M.E.K., S.A.L., R.L.-G., A. Mahajan, W. Meng, M.E.M., P.J.v.d.M., M. Munz, T.N., T.P., G. Prasad, R.B.P., T.D.S.P., F. Rizzi, X.S., B.R.S., D.S., L. Skotte, A.V.S., A.v.d.S., C.N.S., R.J.S., S.M.T., S.T., C.T., N.V., C.V., L.W., H.R.W., R.E.W., L.R.Y., J. Yao, N.A.Y., W. Zhao, A.A.A., S.A., M. Akiyama, M. Alver, G. Chen, M. Cocca, M.P.C., G. Cugliari, F.R.D., G.E.D., G.G., A.G., M. Gögele, M. Graff, E.G.-H., A. Halevy, D.A.v.H., J.H., Y.K., M. Kanai, N.D.K., M. Loh, S.L., Y.L., J.a. L., N.M., X.W.M., M. Mezzavilla, A. Moore, H.M.-M., M.A.N., C.A.R., A.R., D.R., M.S.-L., W.R.S., B.S., J.v.S., S.S., S.R.S., T.T.S., A. Tillander, E.V., L. Zeng, N.A., L. Benjamin, L.F.B., J.P.B., J.A.B., S. Carmi, G.R.C., M. Cornelis, D. Cusi, R.D., D.E., J.D.F., M.F., S.F., P. Goyette, S.C.H., Å.J., S.W.v.d.L., J. Lahti, R.A.L., S.E.M., K.E.N., J.R.O'c., E.P., L.P., J.D.R., F. Rivadeneira, C.R., R.A.S., X.S., J.A.S., C.A.W., J. Yang, L.Y., D.I.C., N.F., R.G.W., J.R.B.P., T.E., A. Helgason. Provided data: Y.O., C. Schurmann, W. Zhang, C.M.-G., Y.B., A.M.D., K.R.v.E., C.F., H.G., M.E.K., K. Matsuda, R.B.P., F. Rizzi, E.S., M.C.S., A.V.S., S.M.T., N.V., A.A.A., C.A.A.-S., M.L.A., M.A.A., A.R.B., E.B., J.B.B., G.J.d.B., E.P.B., L. Broer, H.C., S. Chanock, M.-L.C., G. Chen, Y.-D.I.C., Y.-F.C., J.C., M.S.D., K.D., M.D., A.P.D., N.D., S.S.E., J. Elliott, R.E., J.F.F., K.F., B.I.F., M. Gögele, M.O.G., S.G., D.F.G., K.G., B.G., Y.G., S.P.H., C.A. Haiman, T.B.H., M. Hedayati, M. Hirata, I.H., C.A. Hsiung, Y.-J.H., M.A.I., A.J., P.J., Y.K., C.C.K., W.-P.K., I.K., B.K.K., J. Kuusisto, L.J.L., D.A.L., I.-T.L., W.-J. L., M.M.L., J. Liu, S.J.L., R.M., A.W.M., P.M., G. Måsson, C.M., T. Meitinger, L.M., I.Y.M., Y. Momozawa, T.A.M., A.C.M., T. Muka, A.D.M., R.d.M., J.C.M., M.A.N., M.N., M.J.N., I.M.N., L.O., S.P., G. Pålsson, J.S.P., C. Pattaro, A.P., O.P., N. Poulter, L.Q.-M., K.R., S.R., D.C.R., W.v.R., F.J.A.v.R., C. Sabanayagam, C.F.S., V.S., K. Sandow, B.S.-K., P.J.S., W.H.-H.S., Y. Shi, S.R.S., J.K.S., J.R.S., B.H.S., A. Stanton, L. Stefansson, L. Straker, P.S., G.S., M.A.S., A.M.T., K.D.T., N.T., Y.-C.T., G.T., U.T., R.P.T., T.T.-L., I.T., S.V., J.H.V., V.V., U.V., E.V., S.M.W., M.W., G.S.W., S.W., C.S.Y., J.-M.Y., L. Zhang, J.Z., S.J.L.B., D.M.B., S.I.B., A.C., M.J.C., D. Cesarini, J.C.C., G.R.C., M. Cornelis, D. Cusi, G.D.-S., I.D., R.D., D.E., J. Erdmann, J.G.E., E.E., M.K.E., B.F., M.F., Y.F., P. Gasparini, C. Gonzalez, S.F.A.G., L.G., V.G., C.-K.H., A.A.H., H. Hochner, H. Huikuri, S.C.H., V.W.V.J., P.L.D.J., M.J., J.W.J., J. Kaprio, S.L.K., M. Laakso, S.W.v.d.L., J. Lahti, W.L., N.G.M., G. Matullo, B.F.M., K.L.M., G.W.M., P.B.M., D.R.N., A.J.O., W.P., C. Palmer, C.E.P., L.P., P.A.P., T.J.P., D.J.P., D.P., B.M.P., J.D.R., F. Rivadeneira, C.R., J.I.R., I.R., D.K.S., N. Sattar, H. Schunkert, A. Teumer, N.J.T., T.T., D.R.W., J.B.W., C.W., J.W., A.B.Z., M. Perola, P.K.M., A.G.U., J.S.K., D.I.C., L.F., C.S.H., C.H., R.G.W., T.E. Contributed to manuscript: D.W.C., C. Schurmann, S.E.H., S.M.T., E.P.B., J.C., A.P.D., X.G., S.P.H., D.A.v.H., P.J., W.-P.K., D.A.L., S.J.L., A.P., J.M.S., A.M.T., J.-M.Y., J.Z., I.D., R.D., Y.F., J.W.J., C.R., J.I.R., M. Perola, R.J.F.L., P.K.J., J.F.W. Wrote manuscript: D.W.C. and J.F.W.

Competing interests

M.L.A. is an employee of Genentech, a member of The Roche Group. D.A.L. has received support from several national and international government and charity funders, as well as Roche Diagnostics and Medtronic for work unrelated to this publication. M.I.M.: The views expressed in this article are those of the author(s) and not necessarily those of the NHS, the NIHR, or the Department of Health. He has served on advisory panels for Pfizer, NovoNordisk, Zoe Global; has received honoraria from Merck, Pfizer, NovoNordisk and Eli Lilly; has stock options in Zoe Global; has received research funding from Abbvie, Astra Zeneca, Boehringer Ingelheim, Eli Lilly, Janssen, Merck, NovoNordisk, Pfizer, Roche, Sanofi Aventis, Servier & Takeda. As of June 2019, M.Mc.C. is an employee of Genentech, and holds stock in Roche. T. Muka is now working as medical specialist at Novo Nordisk. O.P. is owner of Gen-info Ltd. Gen-info Ltd provided support in the form of salaries and financial gains for author O.P., but did not have any additional role in selection of the journal or preparation of this manuscript. N. Poulter received financial support from several pharmaceutical companies which manufacture either blood pressure lowering or lipid lowering agents, or both, and consultancy fees. V.S. has participated in a congress trip sponsored By Novo Nordisk. P.J.S. has received research awards from Pfizer Inc. M.J.C. is Chief Scientist for Genomics England, a UK government company. B.M.P. serves on the DSMB of a clinical trial funded by Zoll LifeCor and on the Steering Committee of the Yale Open Data Access Project funded by Johnson & Johnson. A.R.S. is an employee of Regeneron Pharmaceutical Inc. The remaining authors declare no competing interests.

Additional information

Supplementary information is available for this paper at <https://doi.org/10.1038/s41467-019-12283-6>.

Correspondence and requests for materials should be addressed to J.F.W.

Peer review information *Nature Communications* thanks Jun Li, Matthew Robinson and the other, anonymous, reviewer(s) for their contribution to the peer review of this work. Peer reviewer reports are available.

Reprints and permission information is available at <http://www.nature.com/reprints>

Publisher's note Springer Nature remains neutral with regard to jurisdictional claims in published maps and institutional affiliations.



Open Access This article is licensed under a Creative Commons Attribution 4.0 International License, which permits use, sharing, adaptation, distribution and reproduction in any medium or format, as long as you give appropriate credit to the original author(s) and the source, provide a link to the Creative Commons license, and indicate if changes were made. The images or other third party material in this article are included in the article's Creative Commons license, unless indicated otherwise in a credit line to the material. If material is not included in the article's Creative Commons license and your intended use is not permitted by statutory regulation or exceeds the permitted use, you will need to obtain permission directly from the copyright holder. To view a copy of this license, visit <http://creativecommons.org/licenses/by/4.0/>.

© The Author(s) 2019

David W Clark¹, Yukinori Okada^{2,3,4}, Kristjan H S Moore⁵, Dan Mason⁶, Nicola Pirastu¹, Ilaria Gandin^{7,8}, Hannele Mattsson^{9,10}, Catriona L K Barnes¹, Kuang Lin¹¹, Jing Hua Zhao^{12,13}, Patrick Deelen¹⁴, Rebecca Rohde¹⁵, Claudia Schurmann¹⁶, Xiuqing Guo¹⁷, Franco Giulianini¹⁸, Weihua Zhang^{19,20}, Carolina Medina-Gomez^{21,22,23}, Robert Karlsson²⁴, Yanchun Bao²⁵, Traci M Bartz²⁶, Clemens Baumbach²⁷, Ginevra Biino²⁸, Matthew J Bixley²⁹, Marco Brumat⁸, Jin-Fang Chai³⁰, Tanguy Corre^{31,32,33}, Diana L Cousminer^{34,35}, Annelot M Dekker³⁶, David A Eccles^{37,38}, Kristel R van Eijk³⁶, Christian Fuchsberger³⁹, He Gao^{19,40}, Marine Germain^{41,42}, Scott D Gordon⁴³, Hugoline G de Haan⁴⁴, Sarah E Harris^{45,46}, Edith Hofer^{47,48}, Alicia Huerta-Chagoya⁴⁹, Catherine Igartua⁵⁰, Iris E Jansen^{51,52}, Yucheng Jia^{17,32,7}, Tim Kacprowski^{53,54}, Torgny Karlsson⁵⁵, Marcus E Kleber⁵⁶, Shengchao Alfred Li⁵⁷, Ruifang Li-Gao⁴⁴, Anubha Mahajan⁵⁸, Koichi Matsuda⁵⁹, Karina Meidtner^{60,61}, Weihua Meng⁶²,

May E Montasser^{63,64}, Peter J van der Most⁶⁵, Matthias Munz^{66,67,68,69}, Teresa Nutile⁷⁰, Teemu Palviainen⁷¹, Gauri Prasad⁷², Rashmi B Prasad⁷³, Tallapragada Divya Sri Priyanka⁷⁴, Federica Rizzi^{75,76}, Erika Salvi^{76,77}, Bishwa R Sapkota⁷⁸, Daniel Shriner⁷⁹, Line Skotte⁸⁰, Melissa C Smart²⁵, Albert Vernon Smith^{81,82}, Ashley van der Spek⁸², Cassandra N Spracklen⁸³, Rona J Strawbridge^{84,85}, Salman M Tajuddin⁸⁶, Stella Trompet^{87,88}, Constance Turman^{89,90}, Niek Verweij⁹¹, Clara Viberti⁹², Lihua Wang⁹³, Helen R Warren^{94,95}, Robyn E Wootton^{96,97}, Lisa R Yanek⁹⁸, Jie Yao¹⁷, Noha A Yousri^{99,100}, Wei Zhao¹⁰¹, Adebawale A Adeyemo⁷⁹, Saima Afaq¹⁹, Carlos Alberto Aguilar-Salinas^{102,103}, Masato Akiyama^{3,104}, Matthew L Albert^{105,106,107,108}, Matthew A Allison¹⁰⁹, Maris Alver¹¹⁰, Tin Aung^{111,112,113}, Fereidoun Azizi¹¹⁴, Amy R Bentley⁷⁹, Heiner Boeing¹¹⁵, Eric Boerwinkle¹¹⁶, Judith B Borja¹¹⁷, Gert J de Borst¹¹⁸, Erwin P Bottinger^{16,119}, Linda Broer²¹, Harry Campbell¹, Stephen Chanock¹²⁰, Miao-Li Chee¹¹¹, Guanjie Chen⁷⁹, Yii-Der I Chen¹⁷, Zhengming Chen¹¹, Yen-Feng Chiu¹²¹, Massimiliano Cocca¹²², Francis S Collins¹²³, Maria Pina Concas¹²², Janie Corley^{45,124}, Giovanni Cugliari⁹², Rob M van Dam^{30,125,126}, Anna Damulina⁴⁷, Maryam S Daneshpour¹²⁷, Felix R Day¹², Graciela E Delgado⁵⁶, Klodian Dhana^{22,126,128}, Alexander S F Doney¹²⁹, Marcus Dörr^{130,131}, Ayo P Doumatey⁷⁹, Nduna Dzimiri¹³², S Sunna Ebenesersdóttir^{5,133}, Joshua Elliott¹⁹, Paul Elliott^{19,40,134,135,136}, Ralf Ewert¹³⁰, Janine F Felix^{22,23,137}, Krista Fischer¹¹⁰, Barry I Freedman¹³⁸, Giorgia Girotto^{8,139}, Anuj Goel^{58,140}, Martin Gögele³⁹, Mark O Goodarzi¹⁴¹, Mariaelisa Graff¹⁵, Einat Granot-HersHKovitz¹⁴², Francine Grodstein⁸⁹, Simonetta Guarrera⁹², Daniel F Gudbjartsson^{5,143}, Kamran Guity¹²⁷, Bjarni Gunnarsson⁵, Yu Guo¹⁴⁴, Saskia P Hagenaars^{45,124,145}, Christopher A Haiman¹⁴⁶, Avner Halevy¹⁴², Tamara B Harris⁸⁶, Mehdi Hedayati¹²⁷, David A van Heel¹⁴⁷, Makoto Hirata¹⁴⁸, Imo Höfer¹⁴⁹, Chao Agnes Hsiung¹²¹, Jinyan Huang¹⁵⁰, Yi-Jen Hung^{151,152}, M Arfan Ikram²², Anuradha Jagadeesan^{5,133}, Pekka Jousilahti¹⁵³, Yoichiro Kamatani^{3,154}, Masahiro Kanai^{2,3,155}, Nicola D Kerrison¹², Thorsten Kessler¹⁵⁶, Kay-Tee Khaw¹⁵⁷, Chiea Chuen Khor^{111,158}, Dominique P V de Kleijn¹¹⁸, Woon-Puay Koh^{30,159}, Ivana Kolcic¹⁶⁰, Peter Kraft¹²⁶, Bernhard K Krämer⁵⁶, Zoltán Kutalik^{32,33}, Johanna Kuusisto^{161,162}, Claudia Langenberg¹², Lenore J Launer⁸⁶, Deborah A Lawlor^{96,163,164}, I-Te Lee^{165,166,167}, Wen-Jane Lee¹⁶⁸, Markus M Lerch¹⁶⁹, Liming Li¹⁷⁰, Jianjun Liu^{125,158}, Marie Loh^{19,171,172}, Stephanie J London¹⁷³, Stephanie Loomis¹⁷⁴, Yingchang Lu¹⁶, Jian'an Luan¹², Reedik Mägi¹¹⁰, Ani W Manichaikul¹⁷⁵, Paolo Manunta¹⁷⁶, Gísli Másson⁵, Nana Matoba³, Xue W Mei¹¹, Christa Meisinger¹⁷⁷, Thomas Meitinger^{178,179,180}, Massimo Mezzavilla¹³⁹, Lili Milani¹⁸¹, Iona Y Millwood¹¹, Yukihide Momozawa¹⁸², Amy Moore¹²⁰, Pierre-Emmanuel Morange^{183,184}, Hortensia Moreno-Macías¹⁸⁵, Trevor A Mori¹⁸⁶, Alanna C Morrison¹⁸⁷, Taulant Muka^{22,188}, Yoshinori Murakami¹⁸⁹, Alison D Murray¹⁹⁰, Renée de Mutsert⁴⁴, Josyf C Mychaleckyj¹⁷⁵, Mike A Nalls^{191,192}, Matthias Nauck^{131,193}, Matt J Neville^{194,195}, Ilja M Nolte⁶⁵, Ken K Ong^{12,196}, Lorena Orozco¹⁹⁷, Sandosh Padmanabhan¹⁹⁸, Gunnar Pálsson⁵, James S Pankow¹⁹⁹, Cristian Pattaro³⁹, Alison Pattie¹²⁴, Ozren Polasek^{160,200}, Neil Poulter^{201,202}, Peter P Pramstaller³⁹, Lluís Quintana-Murci^{203,204,205}, Katri Räikkönen²⁰⁶, Sarju Ralhan²⁰⁷, Dabeeru C Rao²⁰⁸, Wouter van Rheeën³⁶, Stephen S Rich¹⁷⁵, Paul M Ridker^{18,209}, Cornelius A Rietveld^{210,211}, Antonietta Robino¹²², Frank J A van Rooij²², Daniela Ruggiero^{70,212}, Yasaman Saba²¹³, Charumathi Sabanayagam^{111,112,113}, Maria Sabater-Lleal^{85,214}, Cinzia Felicita Sala²¹⁵, Veikko Salomaa²¹⁶, Kevin Sandow¹⁷, Helena Schmidt²¹³, Laura J Scott²¹⁷, William R Scott¹⁹, Bahareh Sedaghati-Khayat¹²⁷, Bengt Sennblad^{85,218}, Jessica van Setten²¹⁹, Peter J Sever²⁰¹, Wayne H-H Sheu^{152,165,220,221}, Yuan Shi¹¹¹, Smeeta Shrestha^{74,222}, Sharvari Rahul Shukla^{223,224}, Jon K Sigurdsson⁵, Timo Tonis Sikka¹¹⁰, Jai Rup Singh²²⁵, Blair H Smith²²⁶, Alena Stančáková¹⁶¹,

Alice Stanton²²⁷, John M Starr^{45,228,327}, Lilja Stefansdottir⁵, Leon Straker²²⁹, Patrick Sulem⁵, Gardar Sveinbjornsson⁵, Morris A Swertz¹⁴, Adele M Taylor¹²⁴, Kent D Taylor¹⁷, Natalie Terzikhan^{22,230}, Yih-Chung Tham^{111,112}, Gudmar Thorleifsson⁵, Unnur Thorsteinsdottir^{5,82}, Annika Tillander²⁴, Russell P Tracy²³¹, Teresa Tusié-Luna^{232,233}, Ioanna Tzoulaki^{19,40,234}, Simona Vaccargiu²³⁵, Jagadish Vangipurapu¹⁶¹, Jan H Veldink³⁶, Veronique Vitart²³⁶, Uwe Völker^{53,131}, Eero Vuoksimaa²³⁷, Salma M Wakil¹³², Melanie Waldenberger²⁷, Gurpreet S Wander²³⁸, Ya Xing Wang²³⁹, Nicholas J Wareham¹², Sarah Wild²⁴⁰, Chittaranjan S Yajnik²⁴¹, Jian-Min Yuan²⁴², Lingyao Zeng¹⁵⁶, Liang Zhang¹¹¹, Jie Zhou⁷⁹, Najaf Amin²², Folkert W Asselbergs^{243,244,245,246}, Stephan J L Bakker²⁴⁷, Diane M Becker⁹⁸, Benjamin Lehne¹⁹, David A Bennett^{248,249}, Leonard H van den Berg³⁶, Sonja I Berndt¹²⁰, Dwaipayan Bharadwaj²⁵⁰, Lawrence F Bielak¹⁰¹, Murielle Bochud³², Mike Boehnke²¹⁷, Claude Bouchard²⁵¹, Jonathan P Bradfield^{252,253}, Jennifer A Brody²⁵⁴, Archie Campbell⁴⁶, Shai Carmi¹⁴², Mark J Caulfield^{94,95}, David Cesarini^{255,256}, John C Chambers^{19,20,40,257,258}, Giriraj Ratan Chandak⁷⁴, Ching-Yu Cheng^{111,112,113}, Marina Ciullo^{70,212}, Marilyn Cornelis²⁵⁹, Daniele Cusi^{76,260,261}, George Davey Smith^{96,164}, Ian J Deary^{45,124}, Rajkumar Dorajoo¹⁵⁸, Cornelia M van Duijn^{11,22}, David Ellinghaus²⁶², Jeanette Erdmann⁶⁶, Johan G Eriksson^{263,264,265,266,267}, Evangelos Evangelou^{19,234}, Michele K Evans⁸⁶, Jessica D Faul²⁶⁸, Bjarke Feenstra⁸⁰, Mary Feitosa⁹³, Sylvain Foisy²⁶⁹, Andre Franke²⁶², Yechiel Friedlander¹⁴², Paolo Gasparini^{8,139}, Christian Gieger^{27,61}, Clicerio Gonzalez²⁷⁰, Philippe Goyette²⁶⁹, Struan F A Grant^{35,252,271}, Lyn R Griffiths³⁷, Leif Groop^{71,73}, Vilmundur Gudnason^{81,82}, Ulf Gyllenstein⁵⁵, Hakon Hakonarson^{252,271}, Anders Hamsten²⁷², Pim van der Harst⁹¹, Chew-Kiat Heng^{273,274}, Andrew A Hicks³⁹, Hagit Hochner¹⁴², Heikki Huikuri²⁷⁵, Steven C Hunt^{99,276}, Vincent W V Jaddoe^{22,23,137}, Philip L De Jager^{277,278}, Magnus Johannesson²⁷⁹, Åsa Johansson⁵⁵, Jost B Jonas^{239,280}, J Wouter Jukema⁸⁷, Juhani Junttila²⁷⁵, Jaakko Kaprio^{71,281}, Sharon L.R. Kardia¹⁰¹, Fredrik Karpe^{194,282}, Meena Kumari²⁵, Markku Laakso^{161,162}, Sander W van der Laan²⁸³, Jari Lahti^{206,284}, Matthias Laudes²⁸⁵, Rodney A Lea³⁷, Wolfgang Lieb²⁸⁶, Thomas Lumley²⁸⁷, Nicholas G Martin⁴³, Winfried März^{56,288,289}, Giuseppe Matullo⁹², Mark I McCarthy^{58,194,282}, Sarah E Medland⁴³, Tony R Merriman²⁹, Andres Metspalu¹¹⁰, Brian F Meyer²⁹⁰, Karen L Mohlke⁸³, Grant W Montgomery^{43,291}, Dennis Mook-Kanamori^{44,292}, Patricia B Munroe^{94,95}, Kari E North¹⁵, Dale R Nyholt^{43,293}, Jeffery R O'Connell^{63,64}, Carole Ober⁵⁰, Albertine J Oldehinkel²⁹⁴, Walter Palmas²⁹⁵, Colin Palmer²⁹⁶, Gerard G Pasterkamp¹⁴⁹, Etienne Patin^{203,204,205}, Craig E Pennell^{297,298}, Louis Perusse^{299,300}, Patricia A Peyser¹⁰¹, Mario Pirastu³⁰¹, Tinca J.C. Polderman⁵¹, David J Porteous^{45,46}, Danielle Posthuma^{51,302}, Bruce M Psaty^{303,304}, John D Rioux^{269,305}, Fernando Rivadeneira^{21,22,23}, Charles Rotimi⁷⁹, Jerome I Rotter¹⁷, Igor Rudan¹, Hester M Den Ruijter³⁰⁶, Dharambir K Sanghera^{78,307}, Naveed Sattar¹⁹⁸, Reinhold Schmidt⁴⁷, Matthias B Schulze^{60,61,308}, Heribert Schunkert^{156,309}, Robert A Scott¹², Alan R Shuldiner^{63,64,310}, Xueling Sim³⁰, Neil Small³¹¹, Jennifer A Smith^{101,268}, Nona Sotoodehnia³¹², E-Shyong Tai^{30,125,313}, Alexander Teumer^{131,314}, Nicholas J Timpson^{96,315,316}, Daniela Toniolo²¹⁵, David-Alexandre Tregouet⁴¹, Tiinamaija Tuomi^{10,317,318,319}, Peter Vollenweider³²⁰, Carol A Wang^{297,298}, David R Weir²⁶⁸, John B Whitfield⁴³, Cisca Wijmenga¹⁴, Tien-Yin Wong^{111,112}, John Wright⁶, Jingyun Yang^{248,249}, Lei Yu^{248,249}, Babette S Zemel^{271,321}, Alan B Zonderman⁸⁶, Markus Perola³²², Patrik K.E. Magnusson²⁴, André G Uitterlinden^{21,22,23}, Jaspal S Kooner^{20,40,258,323}, Daniel I Chasman^{18,209}, Ruth J.F. Loos^{16,324}, Nora Franceschini¹⁵, Lude Franke¹⁴, Chris S Haley^{236,325}, Caroline Hayward²³⁶, Robin G Walters¹¹,

John R.B. Perry¹², Tõnu Esko^{110,326}, Agnar Helgason^{5,133}, Kari Stefansson^{5,82}, Peter K Joshi¹,
Michiaki Kubo¹⁸² & James F Wilson^{1,236*}

¹Centre for Global Health Research, Usher Institute, University of Edinburgh, Edinburgh EH8 9AG, Scotland. ²Department of Statistical Genetics, Osaka University Graduate School of Medicine, Suita, Osaka 565-0871, Japan. ³Laboratory for Statistical Analysis, RIKEN Center for Integrative Medical Sciences, Yokohama, Kanagawa 230-0045, Japan. ⁴Laboratory of Statistical Immunology, Immunology Frontier Research Center (WPI-IFReC), Osaka University, Suita, Osaka 565-0871, Japan. ⁵deCODE genetics/Amgen Inc., Reykjavik 101, Iceland. ⁶Bradford Institute for Health Research, Bradford Teaching Hospitals NHS Trust, Bradford BD96RJ, UK. ⁷Research Unit, Area Science Park, Trieste 34149, Italy. ⁸Department of Medicine, Surgery and Health Sciences, University of Trieste, Trieste, Italy. ⁹Unit of Public Health Solutions, National Institute for Health and Welfare, Helsinki, Finland. ¹⁰Institute for Molecular Medicine Finland, University of Helsinki, Helsinki, Finland. ¹¹Nuffield Department of Population Health, University of Oxford, Oxford OX3 7LF, UK. ¹²MRC Epidemiology Unit, University of Cambridge School of Clinical Medicine, Cambridge CB2 0QQ, UK. ¹³Cardiovascular Epidemiology Unit, Department of Public Health and Primary Care, University of Cambridge, Cambridge CB1 8RN, UK. ¹⁴Department of Genetics, University Medical Centre Groningen, University of Groningen, Groningen, the Netherlands, Groningen, Groningen 9700 RB, The Netherlands. ¹⁵Department of Epidemiology, Gillings School of Global Public Health, University of North Carolina, Chapel Hill, NC 27514, USA. ¹⁶The Charles Bronfman Institute for Personalized Medicine, Ichan School of Medicine at Mount Sinai, New York, NY 10029, USA. ¹⁷Division of Genomic Outcomes, Department of Pediatrics, The Institute for Translational Genomics and Population Sciences, LABioMed at Harbor-UCLA Medical Center, Torrance, California 90502, USA. ¹⁸Division of Preventive Medicine, Brigham and Women's Hospital, Boston, MA 02215, USA. ¹⁹Department of Epidemiology and Biostatistics, Imperial College London, London W2 1PG, UK. ²⁰Department of Cardiology, Ealing Hospital, Middlesex, Middlesex UB1 3HW, UK. ²¹Department of Internal Medicine, Erasmus University Medical Center, Rotterdam 3015 CN, Netherlands. ²²Department of Epidemiology, Erasmus University Medical Center, Rotterdam 3015 CN, Netherlands. ²³The Generation R Study Group, Erasmus University Medical Center, Rotterdam 3015 CN, The Netherlands. ²⁴Department of Medical Epidemiology and Biostatistics, Karolinska Institutet, Stockholm 17177, Sweden. ²⁵Institute for Social and Economic Research, University of Essex, Colchester CO4 3SQ, UK. ²⁶Cardiovascular Health Research Unit, Departments of Biostatistics and Medicine, University of Washington, Seattle, WA 98101, USA. ²⁷Research Unit of Molecular Epidemiology, Institute of Epidemiology, Helmholtz Zentrum München - German Research Center for Environmental Health, Neuherberg 85764, Germany. ²⁸Institute of Molecular Genetics, National Research Council of Italy, Pavia 27100, Italy. ²⁹Department of Biochemistry, University of Otago, Dunedin 9054, New Zealand. ³⁰Saw Swee Hock School of Public Health, National University of Singapore, Singapore, Singapore 117549, Singapore. ³¹Department of Computational Biology, University of Lausanne, Lausanne 1011, Switzerland. ³²Center for Primary Care and Public Health (Unisanté), University of Lausanne, Lausanne, Switzerland. ³³Swiss Institute of Bioinformatics, Lausanne 1015, Switzerland. ³⁴Division of Human Genetics, Children's Hospital of Philadelphia, Philadelphia, PA 19104, USA. ³⁵Department of Genetics, Perelman School of Medicine, University of Pennsylvania, Philadelphia, PA 19104, USA. ³⁶Department of Neurology, Brain Centre Rudolf Magnus, University Medical Centre Utrecht, Utrecht University, Utrecht 3584 CX, The Netherlands. ³⁷Genomics Research Centre, School of Biomedical Sciences, Institute of Health and Biomedical Innovation, Queensland University of Technology, Brisbane, Queensland 4059, Australia. ³⁸Malaghan Institute of Medical Research, Wellington 6242, New Zealand. ³⁹Institute for Biomedicine, Eurac Research, Affiliated Institute of the University of Lübeck, Bolzano 39100, Italy. ⁴⁰MRC-PHE Centre for Environment and Health, Imperial College London, London W2 1PG, UK. ⁴¹INSERM UMR_S 1166, Sorbonne Universités, Paris 75013, France. ⁴²ICAN Institute for Cardiometabolism and Nutrition, Paris 75013, France. ⁴³QIMR Berghofer Institute of Medical Research, Brisbane, Australia. ⁴⁴Department of Clinical Epidemiology, Leiden University Medical Center, Leiden 2333 ZA, The Netherlands. ⁴⁵Centre for Cognitive Ageing and Cognitive Epidemiology, University of Edinburgh, Edinburgh EH8 9JZ, UK. ⁴⁶Centre for Genomic & Experimental Medicine, Institute of Genetics & Molecular Medicine, University of Edinburgh, Edinburgh EH4 2XU, UK. ⁴⁷Clinical Division of Neurogeriatrics, Department of Neurology, Medical University of Graz, Graz 8036, Austria. ⁴⁸Institute of Medical Informatics, Statistics and Documentation, Medical University of Graz, Graz 8036, Austria. ⁴⁹CONACyT, Instituto Nacional de Ciencias Médicas y Nutrición Salvador Zubirán, Mexico 03940, México. ⁵⁰Department of Human Genetics, University of Chicago, Chicago, IL 60637, USA. ⁵¹Department of Complex Trait Genetics, Center for Neurogenetics and Cognitive Research, Vrije Universiteit Amsterdam, Amsterdam 1081 HV, The Netherlands. ⁵²Alzheimer Center Department of Neurology, VU University Medical Center, Amsterdam Neuroscience, Amsterdam 1081HV, The Netherlands. ⁵³Interfaculty Institute for Genetics and Functional Genomics, University Medicine Greifswald, Greifswald 17475, Germany. ⁵⁴Chair of Experimental Bioinformatics, TUM School of Life Sciences Weihenstephan, Technical University of Munich, Freising-Weihenstephan 85354, Germany. ⁵⁵Department of Immunology, Genetics and Pathology, Science for Life Laboratory, Uppsala University, 75108 Uppsala, Sweden. ⁵⁶Vth Department of Medicine (Nephrology, Hypertensiology, Rheumatology, Endocrinology, Diabetology), Medical Faculty Mannheim, Heidelberg University, Mannheim 68167, Germany. ⁵⁷Cancer Genomics Research Laboratory, Leidos Biomedical Research, Inc., Frederick National Lab for Cancer Research, Frederick, MD, USA. ⁵⁸Wellcome Centre for Human Genetics, University of Oxford, Oxford OX3 7BN, UK. ⁵⁹Department of Computational Biology and Medical Sciences, Graduate school of Frontier Sciences, The University of Tokyo, Tokyo 108-8639, Japan. ⁶⁰Department of Molecular Epidemiology, German Institute of Human Nutrition Potsdam-Rehbruecke, Nuthetal, Germany. ⁶¹German Center for Diabetes Research (DZD), München-Neuherberg, Germany. ⁶²Medical Research Institute, Ninewells Hospital and School of Medicine, University of Dundee, Dundee, UK. ⁶³Division of Endocrinology, Diabetes and Nutrition, Department of Medicine, University of Maryland, School of Medicine, Baltimore, MD 21201, USA. ⁶⁴Program for Personalized and Genomic Medicine, Department of Medicine, University of Maryland, School of Medicine, Baltimore, MD 21201, USA. ⁶⁵Department of Epidemiology, University of Groningen, University Medical Center Groningen, Groningen 9700 RB, The Netherlands. ⁶⁶Institute for Cardiogenetics, University of Lübeck, Lübeck 23562, Germany. ⁶⁷DZHK (German Research Centre for Cardiovascular Research), partner site Hamburg/Lübeck/Kiel, Lübeck 23562, Germany. ⁶⁸University Heart Center Luebeck, Lübeck 23562, Germany. ⁶⁹Charité - University Medicine Berlin, corporate member of Freie Universität Berlin, Humboldt-Universität zu Berlin, and Berlin Institute of Health, Institute for Dental and Craniofacial Sciences, Department of Periodontology and Synoptic Dentistry, Berlin, Germany. ⁷⁰Institute of Genetics and Biophysics A. Buzzati-Traverso - CNR, Naples 80131, Italy. ⁷¹Finnish Institute for Molecular Medicine, University of Helsinki, Helsinki, Finland. ⁷²Genomics and Molecular Medicine Unit, CSIR-Institute of Genomics and Integrative Biology, New Delhi 110020, India. ⁷³Department of Clinical Sciences, Diabetes and Endocrinology, Lund University Diabetes Centre, Lund University, Skåne University Hospital, Malmö 20502, Sweden. ⁷⁴Genomic Research on Complex diseases (GRC Group), CSIR-Centre for Cellular and Molecular Biology, Hyderabad, Telangana 500007, India. ⁷⁵ePhood Scientific Unit, ePhood SRL, Bresso (Milano) 20091, Italy. ⁷⁶Department of Health Sciences, University of Milano, Milano 20139, Italy. ⁷⁷Neuroalgology Unit, IRCCS Foundation Carlo Besta Neurological Institute, Milano 20133, Italy. ⁷⁸Department of Pediatrics, College of Medicine, University of Oklahoma Health Sciences Center, Oklahoma City, OK 73104, USA. ⁷⁹Center for Research on Genomics and Global Health, National Human Genome Research Institute, National Institutes of Health, Bethesda, Maryland 20892-5635, USA. ⁸⁰Department of Epidemiology Research, Statens Serum Institut, Copenhagen DK-2300, Denmark. ⁸¹Icelandic Heart Association, Kopavogur 201, Iceland. ⁸²Faculty of Medicine, School of Health Sciences, University of Iceland,

Reykjavik 101, Iceland. ⁸³Department of Genetics, University of North Carolina, Chapel Hill, NC 27599, USA. ⁸⁴Institute of Health and Wellbeing, University of Glasgow, Glasgow G12 8RZ, UK. ⁸⁵Cardiovascular Medicine Unit, Department of Medicine Solna, Centre for Molecular Medicine, Karolinska Institutet, Stockholm 171 76, Sweden. ⁸⁶Laboratory of Epidemiology and Population Sciences, National Institute on Aging, National Institutes of Health, Baltimore City, Maryland 21224, USA. ⁸⁷Department of Cardiology, Leiden University Medical Center, Leiden 2300 RC, the Netherlands. ⁸⁸Section of Gerontology and Geriatrics, Department of Internal Medicine, Leiden University Medical Center, Leiden 2300RC, the Netherlands. ⁸⁹Department of Epidemiology, Harvard T.H. Chan School of Public Health, Boston, MA 02115, USA. ⁹⁰Program in Genetic Epidemiology and Statistical Genetics, Harvard T.H. Chan School of Public Health, Boston, MA 02115, USA. ⁹¹University of Groningen, University Medical Center Groningen, Department of Cardiology, The Netherlands, Groningen 9713 GZ, the Netherlands. ⁹²Italian Institute for Genomic Medicine (IIGM) and Dept. Medical Sciences, University of Turin, Italy, Turin 10126, Italy. ⁹³Division of Statistical Genomics, Department of Genetics, Washington University School of Medicine, Saint Louis, MO 63110-1093, USA. ⁹⁴NIHR Barts Cardiovascular Biomedical Research Centre, Barts and The London School of Medicine and Dentistry, Queen Mary University of London, London EC1M 6BQ, UK. ⁹⁵Department of Clinical Pharmacology, William Harvey Research Institute, Barts and The London School of Medicine and Dentistry, Queen Mary University of London, London EC1M 6BQ, UK. ⁹⁶MRC Integrative Epidemiology Unit at the University of Bristol, Bristol BS8 2BN, UK. ⁹⁷School of Psychological Science, University of Bristol, Bristol BS8 1TU, UK. ⁹⁸Department of Medicine, GeneSTAR Research Program, Johns Hopkins University School of Medicine, Baltimore, MD 21287, USA. ⁹⁹Department of Genetic Medicine, Weill Cornell Medicine Qatar, Doha, Qatar. ¹⁰⁰Computer and Systems Engineering, Alexandria University, Alexandria, Egypt. ¹⁰¹Department of Epidemiology, School of Public Health, University of Michigan, Ann Arbor, MI 48109, USA. ¹⁰²Departamento de Endocrinología y Metabolismo, Instituto Nacional de Ciencias Médicas y Nutrición Salvador Zubirán, Mexico 14080, México. ¹⁰³Unidad de Investigación de Enfermedades Metabólicas, Tecnológico de Monterrey, Escuela de Medicina y Ciencias de la Salud, Monterrey, N.L. 64710, México. ¹⁰⁴Department of Ophthalmology, Graduate School of Medical Sciences, Kyushu University, Fukuoka, Fukuoka 812-8582, Japan. ¹⁰⁵Immunobiology of Dendritic Cells, Institut Pasteur, Paris 75015, France. ¹⁰⁶Inserm U1223, Paris 75015, France. ¹⁰⁷Centre for Translational Research, Institut Pasteur, Paris 75015, France. ¹⁰⁸Department of Cancer Immunology, Genentech Inc, San Francisco, California 94080, USA. ¹⁰⁹Division of Preventive Medicine, Department of Family Medicine and Public Health, UC San Diego School of Medicine, La Jolla, California 92093, USA. ¹¹⁰Estonian Genome Center, University of Tartu, University of Tartu, Tartu 51010, Estonia. ¹¹¹Singapore Eye Research Institute, Singapore National Eye Centre, Singapore, Singapore 169856, Singapore. ¹¹²Ophthalmology & Visual Sciences Academic Clinical Program (Eye ACP), Duke-NUS Medical School, Singapore, Singapore 169857, Singapore. ¹¹³Department of Ophthalmology, Yong Loo Lin School of Medicine, National University of Singapore, Singapore, Singapore 119228 SG, Singapore. ¹¹⁴Endocrine Research Center, Research Institute for Endocrine Sciences, Shahid Beheshti University of Medical Sciences, Tehran 19839-63113, Iran. ¹¹⁵Department of Epidemiology, German Institute of Human Nutrition Potsdam-Rehbruecke, Nuthetal, Germany. ¹¹⁶Health Science Center at Houston, UTHealth School of Public Health, University of Texas, Houston, TX 77030, USA. ¹¹⁷USC-Office of Population Studies Foundation, Inc., Department of Nutrition and Dietetics, Talamban, University of San Carlos, Cebu City 6000 Cebu, Philippines. ¹¹⁸Department of Vascular Surgery, Division of Surgical Specialties, University Medical Center Utrecht, University of Utrecht, Utrecht, Utrecht 3584 CX, Netherlands. ¹¹⁹Digital Health Center, Hasso Plattner Institute, Universität Potsdam, Potsdam 14482, Germany. ¹²⁰Division of Cancer Epidemiology & Genetics, National Cancer Institute, National Institutes of Health, Bethesda, MD 20892, USA. ¹²¹Institute of Population Health Sciences, National Health Research Institutes, Miaoli, Taiwan, Taiwan. ¹²²Institute for Maternal and Child Health - IRCCS Burlo Garofolo, Trieste 34137, Italy. ¹²³National Human Genome Research Institute, National Institutes of Health, Bethesda, Maryland 20892, USA. ¹²⁴Department of Psychology, University of Edinburgh, 7 George Square, Edinburgh EH8 9JZ, UK. ¹²⁵Department of Medicine, Yong Loo Lin School of Medicine, National University of Singapore, Singapore 119228 SG, Singapore. ¹²⁶Department of Nutrition, Harvard T.H. Chan School of Public Health, Boston, Massachusetts 02115, USA. ¹²⁷Cellular and Molecular Endocrine Research Center, Research Institute for Endocrine Sciences, Shahid Beheshti University of Medical Sciences, Tehran 19839-63113, Iran. ¹²⁸Department of Internal Medicine, Rush University Medical Center, Chicago, Illinois, USA. ¹²⁹MEMO Research, Molecular and Clinical Medicine, University of Dundee, Dundee DD19SY, UK. ¹³⁰Department of Internal Medicine B, University Medicine Greifswald, Greifswald 17475, Germany. ¹³¹DZHK (German Centre for Cardiovascular Research), partner site Greifswald, Greifswald 17475, Germany. ¹³²Department of Genetics, King Faisal Specialist Hospital and Research Center, Riyadh, KSA 12713, Saudi Arabia. ¹³³Department of Anthropology, University of Iceland, Reykjavik 101, Iceland. ¹³⁴National Institute for Health Research Imperial Biomedical Research Centre, Imperial College Healthcare NHS Trust and Imperial College London, London, UK. ¹³⁵UK Dementia Research Institute (UK DRI) at Imperial College London, London, UK. ¹³⁶Health Data Research UK - London, London, England. ¹³⁷Department of Pediatrics, Erasmus University Medical Center, Rotterdam 3015CN, The Netherlands. ¹³⁸Section on Nephrology, Department of Internal Medicine, Wake Forest School of Medicine, Winston-Salem, NC 27101, US. ¹³⁹Medical Genetics, Institute for Maternal and Child Health - IRCCS Burlo Garofolo, Trieste, Italy. ¹⁴⁰Division of Cardiovascular Medicine, Radcliffe Department of Medicine, University of Oxford, Oxford OX3 9DU, UK. ¹⁴¹Division of Endocrinology, Diabetes, and Metabolism, Department of Medicine, Cedars-Sinai Medical Center, Los Angeles, California 90048, USA. ¹⁴²Braun School of Public Health, Hebrew University-Hadassah Medical Center, Jerusalem, Israel. ¹⁴³School of Engineering and Natural Sciences, University of Iceland, Reykjavik 101, Iceland. ¹⁴⁴Chinese Academy of Medical Sciences, Beijing 100730, China. ¹⁴⁵Social, Genetic and Developmental Psychiatry Centre, Institute of Psychiatry, Psychology & Neuroscience, King's College London, London SE5 8AF, UK. ¹⁴⁶Department of Preventive Medicine, Keck School of Medicine, University of Southern California, Los Angeles, California 90089, USA. ¹⁴⁷Blizard Institute, Queen Mary University of London, London E1 2AT, UK. ¹⁴⁸Laboratory of Genome Technology, Institute of Medical Science, The University of Tokyo, Tokyo 108-8639, Japan. ¹⁴⁹Laboratory of Clinical Chemistry and Hematology, Division Laboratories and Pharmacy, University Medical Center Utrecht, University of Utrecht, Utrecht, Utrecht 3584 CX, Netherlands. ¹⁵⁰Shanghai Institute of Hematology, State Key Laboratory Of Medical Genomics, Rui-jin Hospital, Shanghai Jiao Tong University School of Medicine, Shanghai, China 200025, China. ¹⁵¹Division of Endocrine and Metabolism, Tri-Service General Hospital Songshan branch, Taipei, Taiwan, Taiwan. ¹⁵²School of Medicine, National Defense Medical Center, Taipei, Taiwan, Taiwan. ¹⁵³Unit of Public Health Promotion, National Institute for Health and Welfare, Helsinki, Finland. ¹⁵⁴Center for Genomic Medicine, Kyoto University Graduate School of Medicine, Kyoto 606-8507, Japan. ¹⁵⁵Department of Biomedical Informatics, Harvard Medical School, Boston, MA 02115, USA. ¹⁵⁶Deutsches Herzzentrum München, Klinik für Herz- und Kreislauferkrankungen, Technische Universität München, Munich 80636, Germany. ¹⁵⁷Department of Public Health and Primary Care, University of Cambridge, Cambridge CB2 0SR, UK. ¹⁵⁸Human Genetics, Genome Institute of Singapore, Agency for Science, Technology and Research, Singapore, Singapore 138672, Singapore. ¹⁵⁹Health Services and Systems Research, Duke-NUS Medical School, Singapore, Singapore 169857. ¹⁶⁰Centre for Global Health, Faculty of Medicine, University of Split, Split, Croatia. ¹⁶¹Institute of Clinical Medicine, Internal Medicine, University of Eastern Finland, Kuopio, Finland. ¹⁶²Kuopio University Hospital, Kuopio, Finland. ¹⁶³Bristol NIHR Biomedical Research Centre, Bristol BS8 2BN, UK. ¹⁶⁴Population Health Science, Bristol Medical School, Bristol BS8 2BY, UK. ¹⁶⁵Division of Endocrinology and Metabolism, Department of Internal Medicine, Taichung Veterans General Hospital, Taichung, Taiwan, Taiwan. ¹⁶⁶School of Medicine, National Yang-Ming University, Taipei, Taiwan, Taipei 112, Taiwan. ¹⁶⁷School of Medicine, Chung Shan Medical University, Taichung, Taiwan, Taichung City 402, Taiwan. ¹⁶⁸Department of Medical Research, Taichung Veterans General Hospital, Taichung, Taiwan, Taiwan. ¹⁶⁹Department of Internal Medicine A, University Medicine Greifswald, Greifswald 17475, Germany. ¹⁷⁰Department of Epidemiology and Biostatistics, Peking University

Health Science Centre, Peking University, Beijing 100191, China. ¹⁷¹Translational Laboratory in Genetic Medicine, Agency for Science, Technology and Research, Singapore (A*STAR), Singapore 138648, Singapore. ¹⁷²Department of Biochemistry, Yong Loo Lin School of Medicine, National University of Singapore, Singapore, Singapore 117596, Singapore. ¹⁷³National Institute of Environmental Health Sciences, National Institutes of Health, Department of Health and Human Services, Research Triangle Park, Durham, NC 27709, USA. ¹⁷⁴Department of Epidemiology, Johns Hopkins Bloomberg School of Public Health, Baltimore, MD 21205, USA. ¹⁷⁵Center for Public Health Genomics, University of Virginia School of Medicine, Charlottesville, VA 22908, USA. ¹⁷⁶Genomics of Renal Diseases and Hypertension Unit, IRCCS San Raffaele Scientific Institute, Università Vita Salute San Raffaele, Milano 20132, Italy. ¹⁷⁷Helmholtz Zentrum München, Independent Research Group Clinical Epidemiology, Neuherberg 85764, Germany. ¹⁷⁸Institute of Human Genetics, Helmholtz Zentrum Muenchen, Neuherberg 85764, Germany. ¹⁷⁹Institute of Human Genetics, Technical University of Munich, Munich 81675, Germany. ¹⁸⁰DZHK (German Center for Cardiovascular Research), partner site Munich Heart Alliance, Munich 80802, Germany. ¹⁸¹Estonian Genome Center, Institute of Genomics, University of Tartu, Tartu 51010, Estonia. ¹⁸²Laboratory for Genotyping Development, RIKEN Center for Integrative Medical Sciences, Yokohama, Kanagawa 230-0045, Japan. ¹⁸³Laboratory of Haematology, La Timone Hospital, Marseille, France. ¹⁸⁴INSERM UMR_S 1263, Center for Cardiovascular and Nutrition research (C2VN), Aix-Marseille University, Marseille, France. ¹⁸⁵Departamento de Economía, Universidad Autónoma Metropolitana, Mexico 09340, México. ¹⁸⁶Medical School, The University of Western Australia, Perth, Western Australia/Australia 6009, Australia. ¹⁸⁷The University of Texas Health Science Center at Houston, School of Public Health, Department of Epidemiology, Human Genetics and Environmental Sciences, Houston, Texas 77030, USA. ¹⁸⁸Institute of Social and Preventive Medicine (ISPM), University of Bern, Bern, Switzerland. ¹⁸⁹Division of Molecular Pathology, Institute of Medical Science, The University of Tokyo, Tokyo 108-8639, Japan. ¹⁹⁰The Institute of Medical Sciences, Aberdeen Biomedical Imaging Centre, University of Aberdeen, Aberdeen AB25 2ZD, UK. ¹⁹¹Laboratory of Neurogenetics, Bethesda, MD 20892, USA. ¹⁹²Data Tecnica International LLC, Glen Echo, MD 20812, USA. ¹⁹³Institute of Clinical Chemistry and Laboratory Medicine, University Medicine Greifswald, Greifswald 17475, Germany. ¹⁹⁴Oxford Centre for Diabetes, Endocrinology and Metabolism, University of Oxford, Headington, Oxford OX3 7LJ, UK. ¹⁹⁵Oxford NIHR Biomedical Research Centre, Oxford University Hospitals Trust, Oxford, UK. ¹⁹⁶Department of Paediatrics, University of Cambridge School of Clinical Medicine, Cambridge CB2 0QQ, UK. ¹⁹⁷Instituto Nacional de Medicina Genómica, Mexico 14610, México. ¹⁹⁸Institute of Cardiovascular and Medical Sciences, University of Glasgow, Glasgow G12 8TA, UK. ¹⁹⁹Division of Epidemiology & Community Health, School of Public Health, University of Minnesota, Minneapolis, MN 55454, USA. ²⁰⁰Gen-info Ltd, Zagreb, Croatia, Zagreb, Select a Province 10000, Croatia. ²⁰¹International Centre for Circulatory Health, Imperial College London, London W2 1PG, UK. ²⁰²Imperial Clinical Trials Unit, Imperial College London, London, London W12 7TA, UK. ²⁰³Human Evolutionary Genetics Unit, Institut Pasteur, Paris 75015, France. ²⁰⁴Centre National de la Recherche Scientifique (CNRS) UMR2000, Paris 75015, France. ²⁰⁵Center of Bioinformatics, Biostatistics and Integrative Biology, Institut Pasteur, Paris 75015, France. ²⁰⁶Department of Psychology and Logopedics, Faculty of Medicine, University of Helsinki, University of Helsinki, Helsinki 00014, Finland. ²⁰⁷Hero Heart Institute and Dyanand Medical College and Hospital, Ludhiana, Punjab, India. ²⁰⁸Division of Biostatistics, Washington University School of Medicine, St. Louis, Missouri, USA. ²⁰⁹Harvard Medical School, Boston, MA 02115, USA. ²¹⁰Department of Applied Economics, Erasmus School of Economics, Erasmus University Rotterdam, Rotterdam 3062 PA, The Netherlands. ²¹¹Erasmus University Rotterdam Institute for Behavior and Biology, Erasmus University Rotterdam, Rotterdam 3062 PA, The Netherlands. ²¹²IRCCS Neuromed, Pozzilli (IS) 86077, Italy. ²¹³Gottfried Schatz Research Center (for Cell Signaling, Metabolism and Aging), Division of Molecular Biology and Biochemistry, Medical University of Graz, 8010 Graz, Austria. ²¹⁴Unit of Genomics of Complex Diseases, Institut de Recerca Hospital de la Santa Creu i Sant Pau, IIB-Sant Pau, Barcelona, Spain. ²¹⁵San Raffaele Research Institute, Milano, Italy. ²¹⁶Department of Public Health Solutions, National Institute for Health and Welfare, Helsinki FI-00271, Finland. ²¹⁷Department of Biostatistics, and Center for Statistical Genetics, University of Michigan, Ann Arbor, Michigan 48109, USA. ²¹⁸Dept of Cell and Molecular Biology, National Bioinformatics Infrastructure Sweden, Science for Life Laboratory, Uppsala University, Uppsala, SE-752 37 Uppsala, Sweden. ²¹⁹Department of Cardiology, Division Heart & Lungs, University Medical Center Utrecht, University of Utrecht, Utrecht, Utrecht 3485 CX, Netherlands. ²²⁰School of Medicine, National Yang-Ming University, Taipei, Taiwan, Taiwan. ²²¹Institute of Medical Technology, National Chung-Hsing University, Taichung, Taiwan, Taiwan. ²²²School of Basic and Applied Sciences, Dayananda Sagar University, Bangalore, Karnataka 560078, India. ²²³Diabetes Unit, KEM Hospital and Research Centre, Pune, Maharashtra 411001, India. ²²⁴Symbiosis Statistical Institute, Symbiosis International University, Pune, Maharashtra 411007, India. ²²⁵Panjabi University, Chandigarh, India. ²²⁶Division of Population Health Sciences, Ninewells Hospital and Medical School, University of Dundee, Dundee DD1 9SY, UK. ²²⁷RCSI Molecular & Cellular Therapeutics (MCT), Royal College of Surgeons in Ireland, RCSI Education & Research Centre, Beaumont Hospital, Dublin 9, Ireland. ²²⁸Alzheimer Scotland Dementia Research Centre, University of Edinburgh, Edinburgh EH8 9JZ, Scotland. ²²⁹School of Physiotherapy and Exercise Science, Faculty of Health Sciences, Curtin University, Perth, Western Australia/Australia 6102, Australia. ²³⁰Department of Respiratory Medicine, Ghent University Hospital, Ghent 9000, Belgium. ²³¹Department of Pathology, University of Vermont, Colchester, VT 05446, USA. ²³²Departamento de Medicina Genómica y Toxicología Ambiental, Instituto de Investigaciones Biomédicas, UNAM, Mexico 04510, México. ²³³Unidad De Biología Molecular y Medicina Genómica, Instituto Nacional de Ciencias Médicas y Nutrición Salvador Zubirán, Mexico 14080, México. ²³⁴Department of Hygiene and Epidemiology, University of Ioannina Medical School, Ioannina 45110, Greece. ²³⁵Institute of Genetic and Biomedical Research - Support Unity, National Research Council of Italy, Rome, Italy. ²³⁶MRC Human Genetics Unit, Institute of Genetics and Molecular Medicine, University of Edinburgh, Edinburgh EH4 2XU, Scotland. ²³⁷Institute for Molecular Medicine Finland (FIMM), University of Helsinki, Helsinki FI-00014, Finland. ²³⁸Department of Cardiology, Hero DMC Heart Institute, Dayanand Medical College & Hospital, Ludhiana, Punjab 141001, India. ²³⁹Beijing Institute of Ophthalmology, Beijing Tongren Eye Center, Beijing Tongren Hospital, Capital Medical University, Beijing Ophthalmology and Visual Science Key Lab, Beijing, China 100005, China. ²⁴⁰Centre for Population Health Sciences, Usher Institute of Population Health and Informatics, University of Edinburgh, Edinburgh EH8 9AG, Scotland. ²⁴¹Diabetes Unit, K.E.M. Hospital Research Centre, Pune, MAH 411011, India. ²⁴²Department of Epidemiology, Graduate School of Public Health, University of Pittsburgh, Pittsburgh, Pennsylvania, USA. ²⁴³Department of Cardiology, Division Heart & Lungs, University Medical Center Utrecht, University of Utrecht, Utrecht, Utrecht 3584 CX, Netherlands. ²⁴⁴Institute of Cardiovascular Science, Faculty of Population Health Sciences, University College London, London WC1E 6DD, UK. ²⁴⁵Durrer Center for Cardiovascular Research, Netherlands Heart Institute, Utrecht, Netherlands. ²⁴⁶Farr Institute of Health Informatics Research and Institute of Health Informatics, University College London, London, UK. ²⁴⁷Department of Internal Medicine, University Medical Center Groningen, University of Groningen, Groningen 9713GZ, The Netherlands. ²⁴⁸Rush Alzheimer's Disease Center, Rush University Medical Center, Chicago, IL 60612, USA. ²⁴⁹Department of Neurological Sciences, Rush University Medical Center, Chicago, IL 60612, USA. ²⁵⁰Systems Genomics Laboratory, School of Biotechnology, Jawaharlal Nehru University, New Delhi 110067, India. ²⁵¹Pennington Biomedical Research Center, Baton Rouge, Louisiana 70808, USA. ²⁵²Center for Applied Genomics, Division of Human Genetics, Children's Hospital of Philadelphia, Philadelphia, PA 19104, USA. ²⁵³Quantinuum Research LLC, San Diego, CA 92101, USA. ²⁵⁴Cardiovascular Health Research Unit, Department of Medicine, University of Washington, Seattle, WA 98101, USA. ²⁵⁵Center for Experimental Social Science, Department of Economics, New York University, New York, New York 10012, USA. ²⁵⁶Research Institute for Industrial Economics (IFN), Stockholm 102 15, Sweden. ²⁵⁷Lee Kong Chian School of Medicine, Nanyang Technological University, Singapore 308232, Singapore. ²⁵⁸Imperial College Healthcare NHS Trust, London, London W12 0HS, UK. ²⁵⁹Department of Preventive Medicine, Northwestern University

Feinberg School of Medicine, Chicago, IL 60611, USA. ²⁶⁰Institute of Biomedical Technologies Milano, National Research Council of Italy (CNR), Segrate (Milano) 20090, Italy. ²⁶¹Bio4Dreams Scientific Unit, Bio4Dreams SRL, Bio4Dreams - business nursery for life sciences, Milano 20121, Italy. ²⁶²Institute of Clinical Molecular Biology, Christian-Albrechts-University of Kiel, 24105 Kiel, Germany. ²⁶³Department of General Practice and Primary health Care, University of Helsinki, Tukholmankatu 8 B, Helsinki 00014, Finland. ²⁶⁴National Institute for Health and Welfare, Helsinki, Finland. ²⁶⁵Unit of General Practice, Helsinki University Central Hospital, Helsinki, Finland. ²⁶⁶Folkhälsan Research Centre, Helsinki, Finland. ²⁶⁷Vasa Central Hospital, Vaasa, Finland. ²⁶⁸Survey Research Center, Institute for Social Research, University of Michigan, Ann Arbor, MI 48014, USA. ²⁶⁹Montreal Heart Institute, Montreal, QC, Canada. ²⁷⁰Centro de Estudios en Diabetes, Unidad de Investigacion en Diabetes y Riesgo Cardiovascular, Centro de Investigacion en Salud Poblacional, Instituto Nacional de Salud Publica, Cuernavaca 01120, México. ²⁷¹Department of Pediatrics, Perelman School of Medicine, University of Pennsylvania, Philadelphia, PA 19104, USA. ²⁷²Cardiovascular Medicine Unit, Department of Medicine Solna, Centre for Molecular Medicine, Stockholm 171 76, Sweden. ²⁷³Department of Paediatrics, Yong Loo Lin School of Medicine, National University of Singapore, Singapore, Singapore. ²⁷⁴Khoo Teck Puat - National University Children's Medical Institute, National University Health System, Singapore, Singapore. ²⁷⁵Research Unit of Internal Medicine, Medical Research Center Oulu, University of Oulu and Oulu University Hospital, Oulu 90014, Finland. ²⁷⁶Division of Epidemiology, Department of Internal Medicine, University of Utah School of Medicine, Salt Lake City, Utah 84108, USA. ²⁷⁷Center for Translational & Computational Neuroimmunology, Department of Neurology, Columbia University Medical Center, 650 West 168th street, PH19-311, New York, NY 10032, USA. ²⁷⁸Cell Circuits Program, Broad Institute, Cambridge, MA 02142, USA. ²⁷⁹Department of Economics, Stockholm School of Economics, Stockholm SE-113 83, Sweden. ²⁸⁰Department of Ophthalmology, Medical Faculty Mannheim of the Ruprecht-Karls-University of Heidelberg, Mannheim 698167, Germany. ²⁸¹Department of Public Health, University of Helsinki, Helsinki FI-00014, Finland. ²⁸²Oxford NIHR Biomedical Research Centre, Oxford University Hospitals NHS Foundation Trust, John Radcliffe Hospital, Oxford OX3 9DU, UK. ²⁸³Laboratory of Clinical Chemistry and Hematology, Division Laboratories and Pharmacy, University Medical Center Utrecht, University of Utrecht, Utrecht 3584 CX, Netherlands. ²⁸⁴Helsinki Collegium for Advanced Studies, University of Helsinki, University of Helsinki, Helsinki 00014, Finland. ²⁸⁵University Hospital Schleswig-Holstein (UKSH), Campus Kiel, Kiel 24105, Germany. ²⁸⁶Institute of Epidemiology and PopGen Biobank, University of Kiel, Kiel, Schleswig Holstein 24105, Germany. ²⁸⁷Department of Statistics, University of Auckland, Auckland, New Zealand. ²⁸⁸Clinical Institute of Medical and Chemical Laboratory Diagnostics, Medical University of Graz, Graz, Austria. ²⁸⁹Synlab Academy, Synlab Holding Deutschland GmbH, Mannheim, Germany. ²⁹⁰Department of Genetics, King Faisal Specialist Hospital and Research Centre, Riyadh 11211, Saudi Arabia. ²⁹¹Institute for Molecular Bioscience, The University of Queensland, Brisbane, Queensland 4072, Australia. ²⁹²Department of Public Health and Primary Care, Leiden University Medical Center, Leiden 2333 ZA, The Netherlands. ²⁹³School of Biomedical Sciences, Institute of Health and Biomedical Innovation, Queensland University of Technology, Kelvin Grove, QLD 4059, Australia. ²⁹⁴Department of Psychiatry, Interdisciplinary Center Psychopathology and Emotion Regulation, University of Groningen, University Medical Center Groningen, Groningen 9700 RB, The Netherlands. ²⁹⁵Department of Medicine, Columbia University Medical Center, New York, New York, USA. ²⁹⁶Pat Macpherson Centre for Pharmacogenetics and Pharmacogenomics, The School of Medicine, University of Dundee, Dundee DD1 9SY, UK. ²⁹⁷School of Medicine and Public Health, Faculty of Medicine and Health, The University of Newcastle, Newcastle, New South Wales, Australia. ²⁹⁸Division of Obstetrics and Gynaecology, The University of Western Australia, Perth, Western Australia/Australia 6009, Australia. ²⁹⁹Department of kinesiology, Laval University, Quebec, QC G1V 0A6, Canada. ³⁰⁰Institute of Nutrition and Functional Foods, Laval University, Quebec, QC G1V 0A6, Canada. ³⁰¹Institute of Genetic and Biomedical Research - Support Unity, National Research Council of Italy, Sassari 07100, Italy. ³⁰²Department of Clinical Genetics, Amsterdam Neuroscience, VU Medical Centre, Amsterdam 1081HV, The Netherlands. ³⁰³Cardiovascular Health Research Unit, Departments of Epidemiology, Medicine and Health Services, University of Washington, Seattle, WA 98101, USA. ³⁰⁴Kaiser Permanente Washington Health Research Institute, Seattle, WA 98101, USA. ³⁰⁵Department of Medicine, Faculty of Medicine, Université de Montréal, Montreal, Quebec H3T 1J4, Canada. ³⁰⁶Laboratory of Experimental Cardiology, Division Heart & Lungs, University Medical Center Utrecht, University of Utrecht, Utrecht, Utrecht 3584 CX, Netherlands. ³⁰⁷Oklahoma Center for Neuroscience, Oklahoma City, OK 73104, USA. ³⁰⁸Institute of Nutritional Sciences, University of Potsdam, Nuthetal, Germany. ³⁰⁹Deutsches Zentrum für Herz- und Kreislauferkrankungen (DZHK), Munich Heart Alliance, Munich 80636, Germany. ³¹⁰Regeneron Genetics Center, Regeneron Pharmaceuticals, Inc, Tarrytown, NY 10591-6607, USA. ³¹¹Faculty of Health Studies, University of Bradford, Bradford, West Yorkshire BD7 1DP, UK. ³¹²Cardiovascular Health Research Unit, Division of Cardiology, University of Washington, Seattle, WA 98101, USA. ³¹³Duke-NUS Medical School, National University of Singapore, Singapore, Singapore 169857 SG, Singapore. ³¹⁴Institute for Community Medicine, University Medicine Greifswald, Greifswald 17475, Germany. ³¹⁵Department of Population Health Sciences, Bristol Medical School, University of Bristol, Bristol BS8 2PR, UK. ³¹⁶Avon Longitudinal Study of Parents and Children (ALSPAC), University of Bristol, Bristol BS8 2PR, UK. ³¹⁷Endocrinology, Abdominal Centre, University of Helsinki, Helsinki University Hospital, Helsinki, Finland. ³¹⁸Folkhälsan Research Center, Helsinki, Finland. ³¹⁹Research Program of Diabetes and Endocrinology, University of Helsinki, Helsinki, Finland. ³²⁰Department of Medicine, Internal Medicine, Lausanne University Hospital, Lausanne 1011, Switzerland. ³²¹Division of Gastroenterology, Hepatology and Nutrition, Children's Hospital of Philadelphia, Philadelphia, PA 19146, USA. ³²²Unit of Genomics and Biomarkers, National Institute for Health and Welfare, Helsinki 00271, Finland. ³²³National Heart and Lung Institute, Imperial College London, London W12 0NN, UK. ³²⁴The Mindich Child Health and Development Institute, The Icahn School of Medicine at Mount Sinai, New York, NY 10029, USA. ³²⁵Roslin Institute and Royal (Dick) School of Veterinary Studies, University of Edinburgh, Easter Bush, Midlothian EH25 9RG, Scotland. ³²⁶Program in Medical and Population Genetics, Broad Institute, Broad Institute, Cambridge, MASSACHUSETTS 02142, USA. ³²⁷Deceased: Yucheng Jia, John M. Starr.