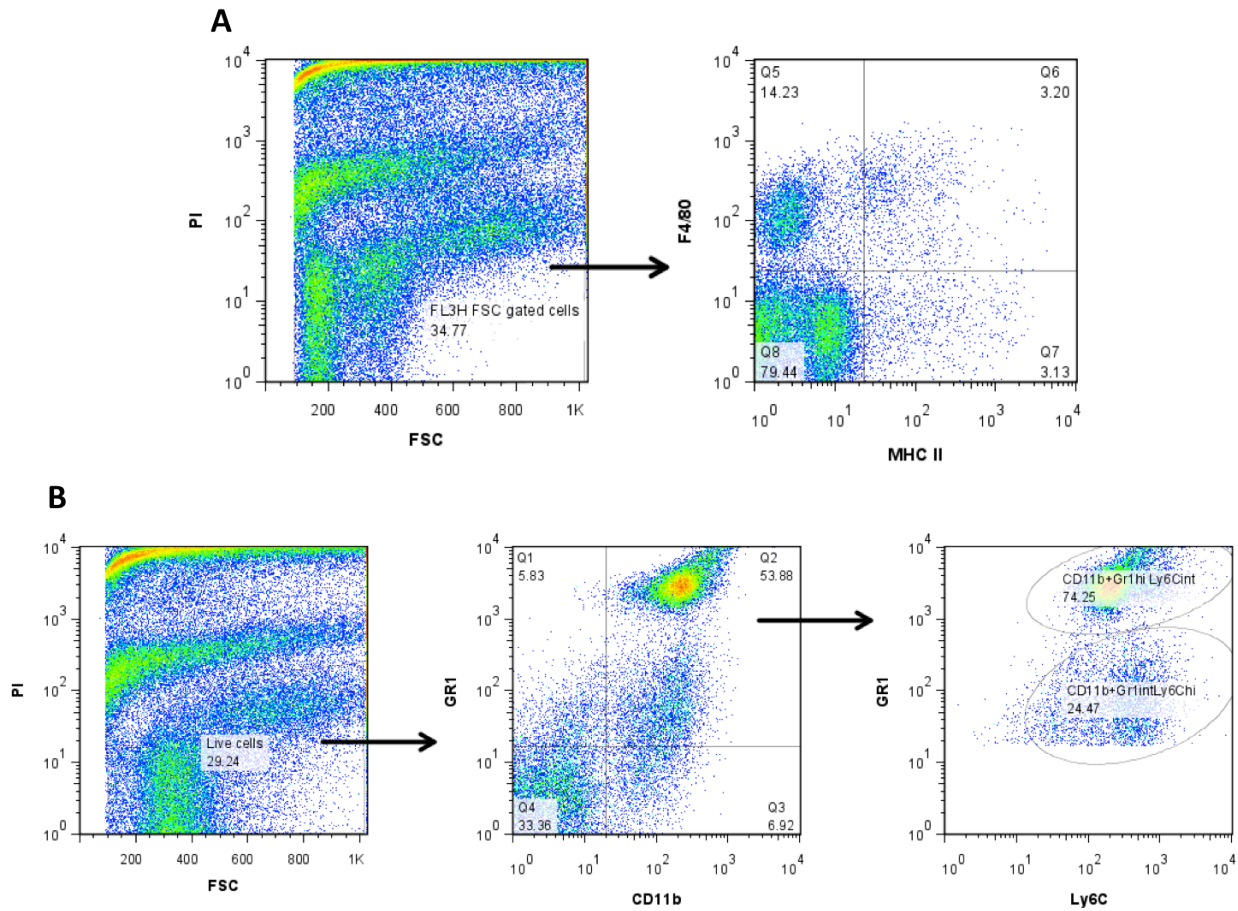


1 Supplemental materials



2

3 S1. Illustration of gating strategy.

4 In this particular example, single cell bladder suspensions were obtained as described in the
5 Materials and Methods from implanted animals infected with OG1RF for 24h. Staining of
6 surface markers was performed in FcR block with fluorochrome-conjugated monoclonal
7 antibodies (mAbs). Cells were counterstained with propidium iodide (PI) prior to flow cytometry
8 and only live (PI low) cells were included in the analysis. To specifically characterize the
9 immune infiltrates, specific combinations of mAbs were chosen which distinguish
10 monocytes/macrophages (F4/80⁺) and granulocytes (CD11b⁺Gr1^{hi}Ly6G^{hi}Ly6C^{lo}). Activation

11 status was determined using specific mAbs for MHC-II. Samples were acquired on a
12 FACScalibur (BD Biosciences) and data were analyzed using FlowJo software (version 7.6.4).

13

14

15

16

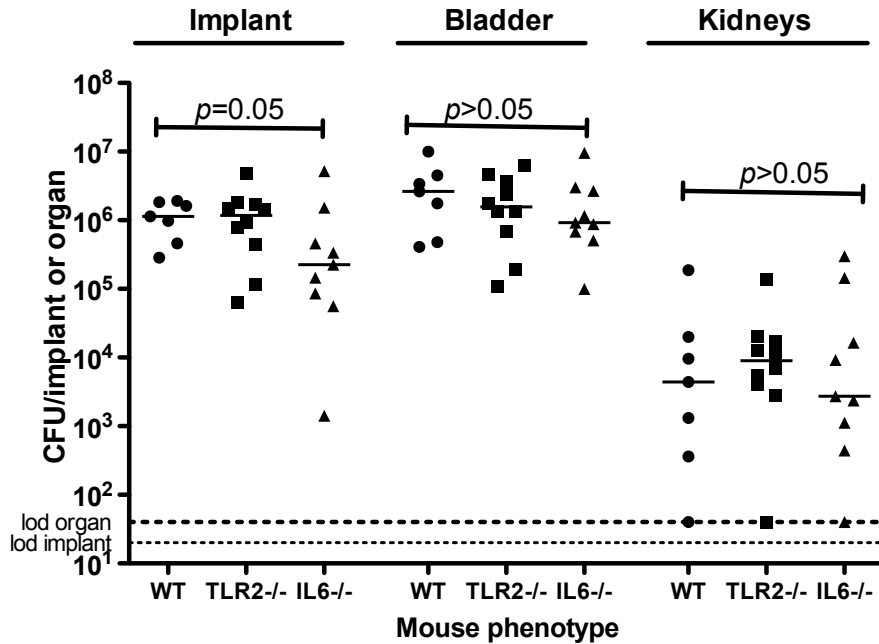
17

18

19

20

21



22

23 **S2. Defects in IL6 and TLR2 do not alter *E. faecalis* uropathogenesis.**

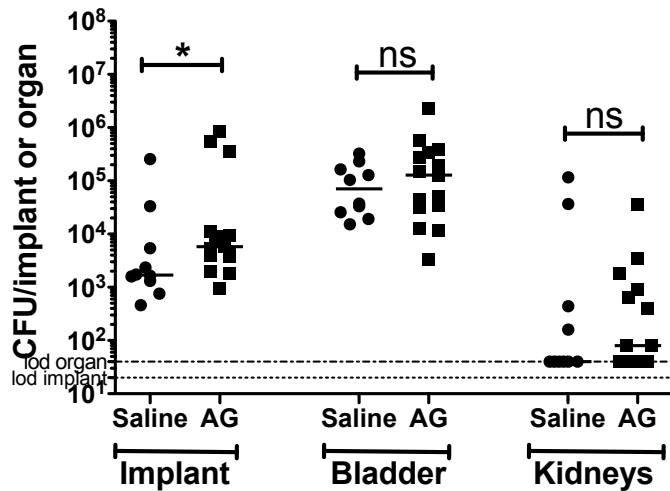
24 Graph represents OG1RF titers at 24hpi from retrieved implants, homogenized bladders, and
 25 kidneys of WT, TLR-2- and IL-6- deficient mice. The horizontal bars indicate the median of
 26 each dataset from at least two independent experiments with n=5/condition/experiment. The
 27 horizontal dashed lines represent the limit of detection (lod). *p* values determined by the Mann
 28 Whitney U test.

29

30

31

32



33

34 **S3. Inhibition of inducible nitric oxide synthase (iNOS) enhances *E. faecalis* colonization of**
 35 **implants.**

36 Graph represents OG1RF titers at 6hpi from retrieved implants, homogenized bladders, and
 37 kidneys of C57Bl6/Ncr mice treated with aminoguanidine (200mg/kg i.p.) 30min prior to
 38 implantation and 3h post implantation and bacterial challenge. The horizontal bars indicate the
 39 median of each dataset from two independent experiments with n=5/condition/experiment. The
 40 horizontal dashed lines represent the limit of detection (lod). *p* values determined by the Mann
 41 Whitney U test, **p*<0.05, ns represents *p*>0.05.

42

43

44