

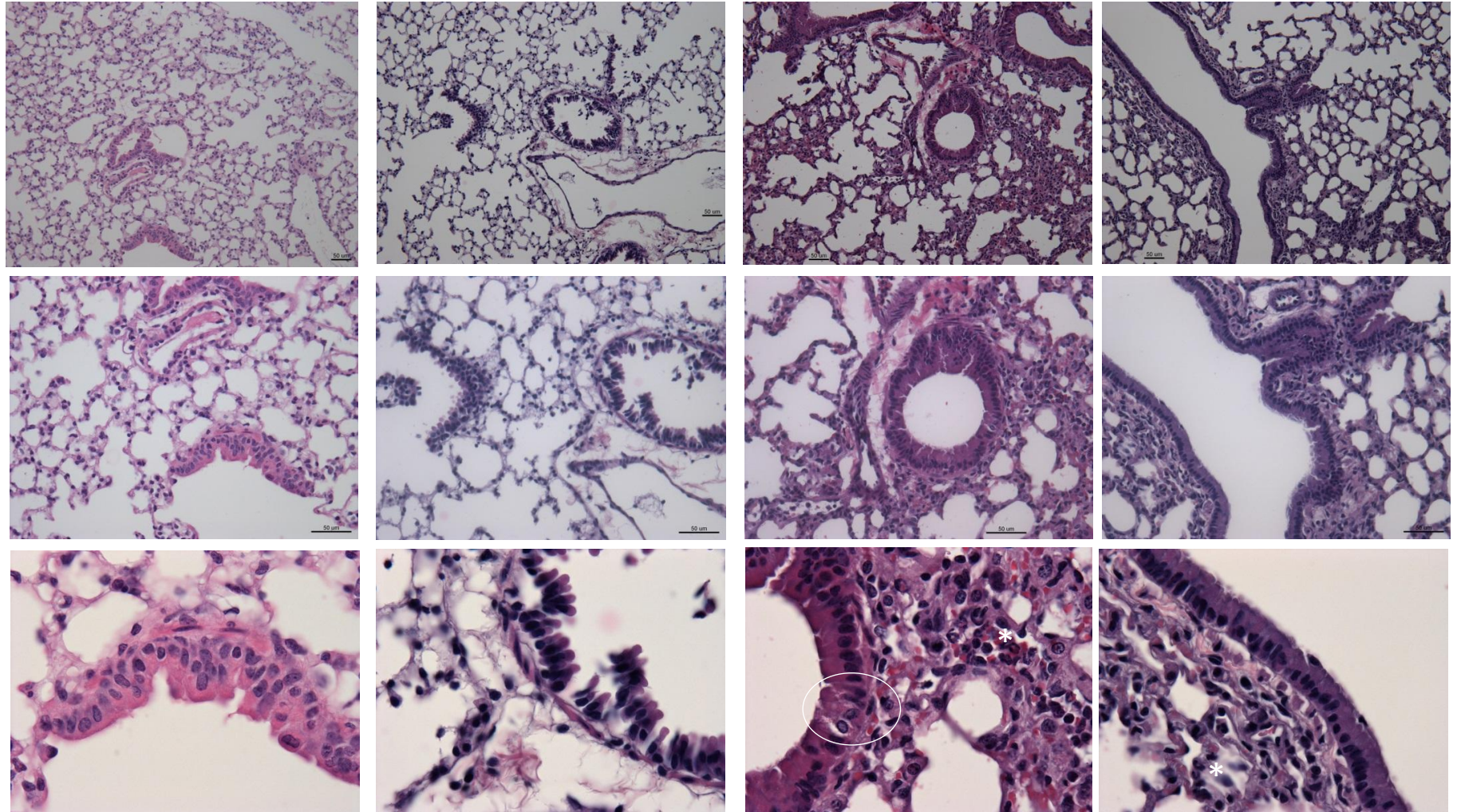
# Challenge with *F. alocis*

Sham (7 days)

2 h

24 h

72 h



**Supplemental Figure 1. *F. alocis* induce neutrophil recruitment and epithelial damage in the lungs.** Hematoxylin-eosin staining of lung tissue from sham or *F. alocis* infected mice at 2-24-72 h post infection. Original magnification on upper panel 20 x, middle panel 40 x, and bottom panel 100 x. \* Indicate area with neutrophil infiltration, white oval indicates an area with bronchial epithelial damage. One representative experiment of three is shown.