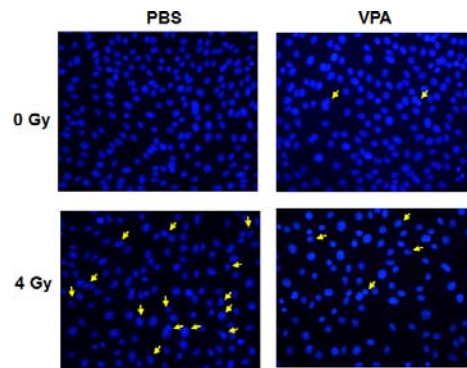
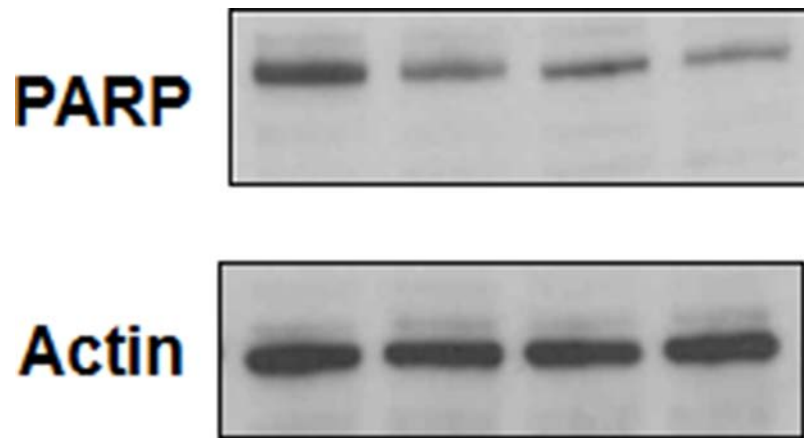


## SUPPLEMENTARY FIGURES



**Supplementary Figure S1: Valproic acid attenuates radiation-induced apoptosis in HT-22 cells.** HT-22 cells were treated with PBS or 0.6 mM Valproic acid for 7 days prior to irradiation with 4 Gy. 24 h after irradiation, cells were fixed and stained with DAPI. Shown are the micrographs after DAPI staining. Apoptotic cells indicated by arrows were counted in eight randomly selected HPF.



**Supplementary Figure S2: PARP cleavage is not detected in irradiated HT-22.** HT22 cells were treated with PBS or 0.6 mM VPA for 7 days prior to irradiation with 4 Gy. Whole cell extracts were immunoblotted to determine PARP cleavage. Actin was used to normalize the protein loading in each lane.