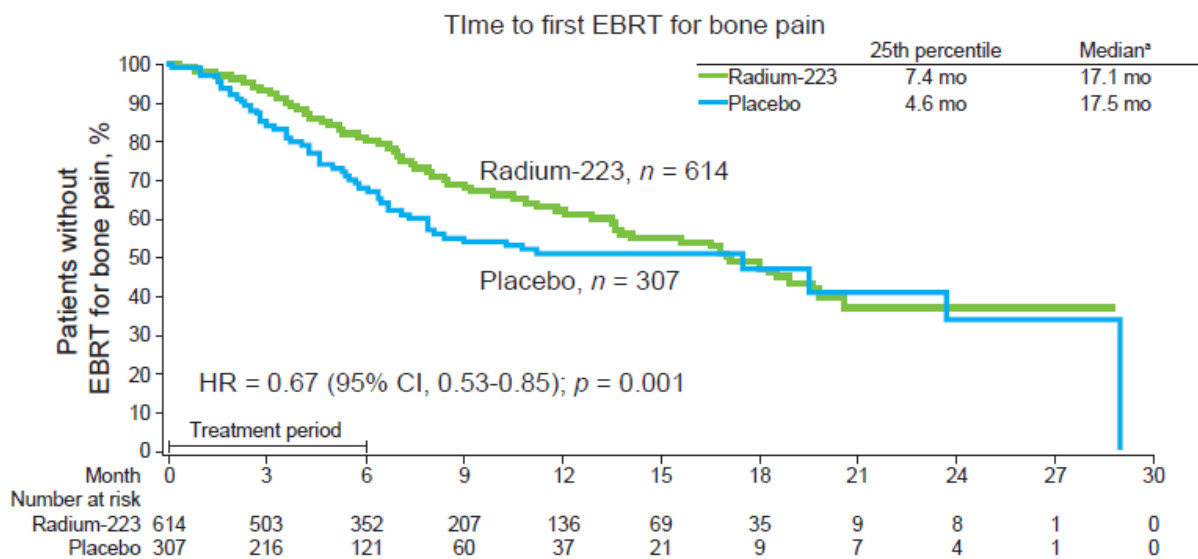


Supplemental Fig. 1 - Kaplan-Meier estimate of time to first use of EBRT for bone pain (ITT population; N = 921).



^aMedian time to first EBRT for bone pain was longer for placebo patients versus radium-223 patients (17.5 mo vs 17.1 mo, respectively); this finding may have been affected by the small number of evaluable patients and censoring at later time points in the study, thus the tail end of the curves were not reliably estimated. The 25th percentile was 7.4 months for radium-223 patients and 4.6 months for placebo patients, indicating the treatment benefit of radium-223 during the early part of the study, when most patients were evaluable. HR is the most appropriate statistical parameter to best interpret the treatment difference over the entire observed time frame.