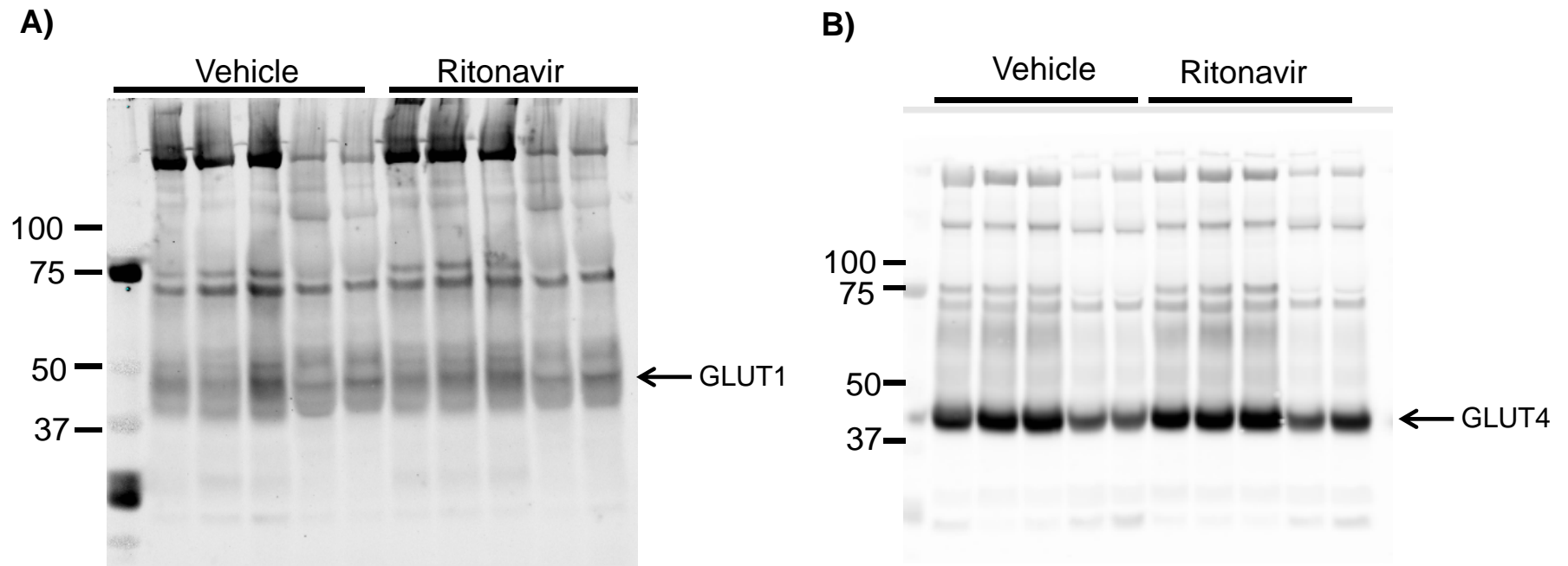


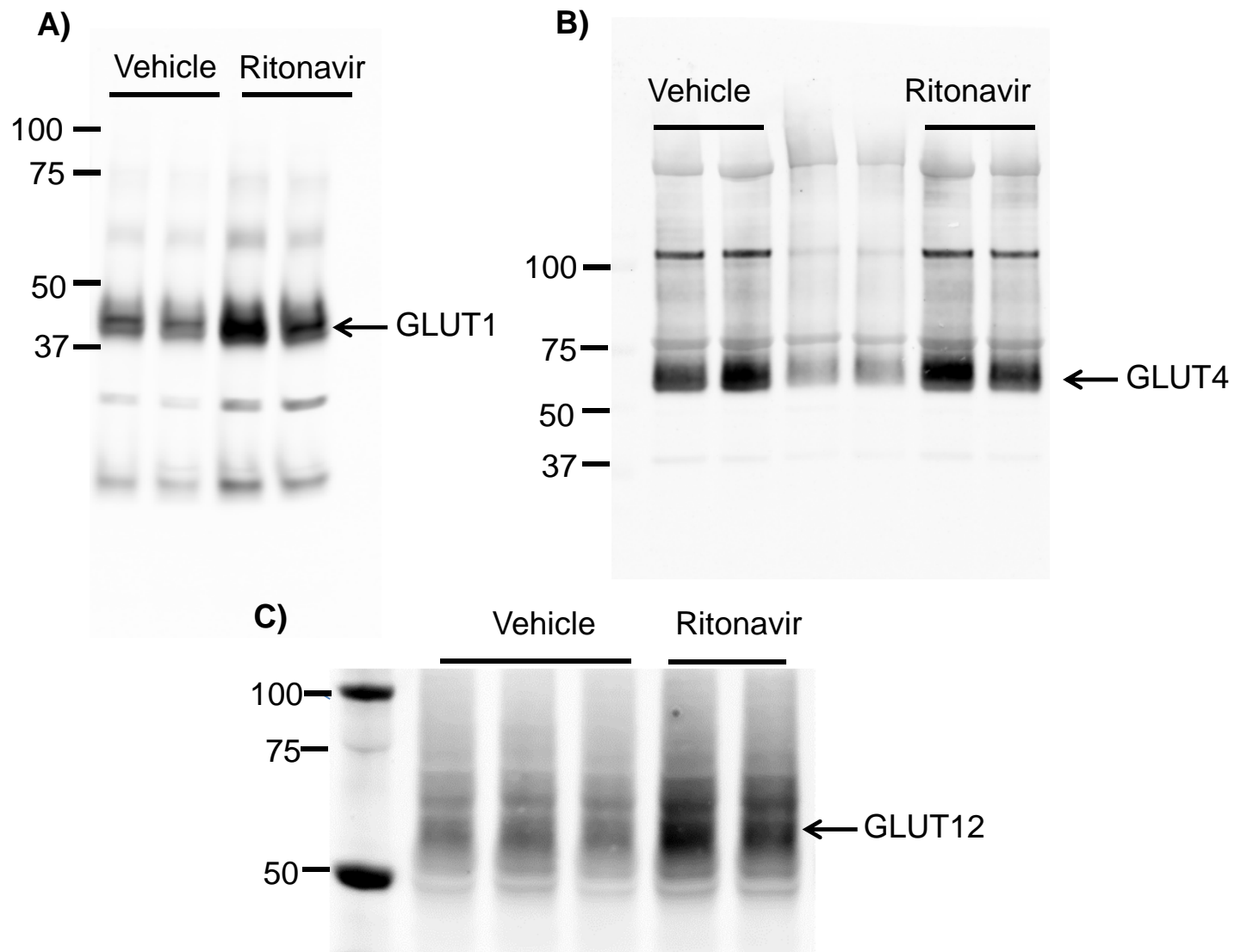
**Metabolic and Cardiac Adaptation to Chronic Pharmacologic Blockade  
of Facilitative Glucose Transport in Murine Dilated Cardiomyopathy  
and Myocardial Ischemia**

Monique R. Heitmeier<sup>1</sup>, Maria A. Payne<sup>1</sup>, Carla Weinheimer<sup>2</sup>, Atilla Kovacs<sup>2</sup>,  
Richard C. Hresko<sup>1</sup>, Patrick Y. Jay<sup>1,3</sup>, and Paul W. Hruz<sup>1, 4</sup>

<sup>1</sup>Department of Pediatrics, <sup>2</sup>Department of Internal Medicine, <sup>3</sup>Department of  
Genetics, <sup>4</sup>Department of Cell Biology and Physiology, Washington  
University School of Medicine



Supplementary Figure1: Full-length blots for Figure 6. Effects of Chronic Ritonavir Treatment on GLUT Protein Expression by Skeletal Muscle. Protein expression of A) GLUT1, B) GLUT4 was determined in 75 day old male TG9 mice treated with vehicle or ritonavir since 6 weeks of age by Western Blot analysis as described in Methods.



Supplementary Figure 2: Full-length blots for Figure 7. Effects of Chronic Ritonavir Treatment on GLUT Protein Expression by Left Ventricle. Protein expression of A) GLUT1, B) GLUT4, and C) GLUT12 was determined in 75 day old male TG9 mice, treated with vehicle or ritonavir since 6 weeks of age by Western Blot analysis as described in Methods.