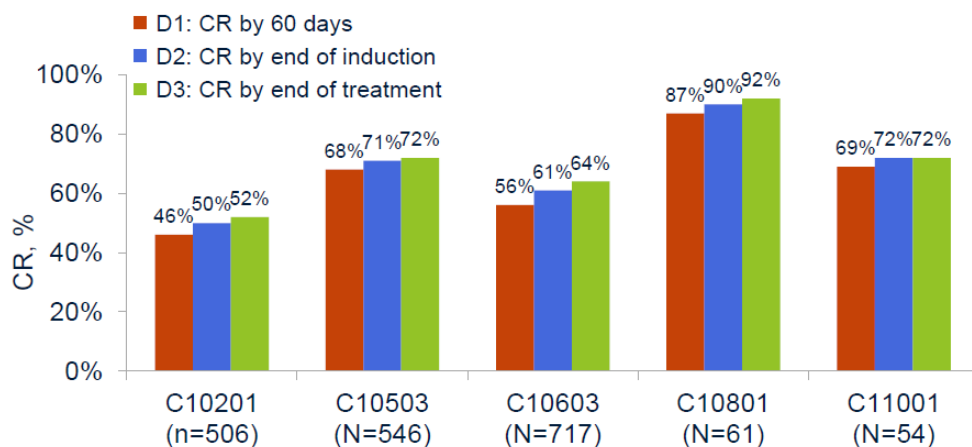


Supplemental Document

Suppl. Table 1. CR Rates by Induction Failure Definition D1-3

	10201 (N=506)	10503 (N=546)	10603 (N=717)	10801 (N=61)	11001 (N=54)	Total (N=1884)
CR (D1) status						
CR, by 60 days	233 (46.0%)	371 (67.9%)	400 (55.8%)	53 (86.9%)	37 (68.5%)	1094 (58.1%)
CR during 1st induction cycles	208 (41.1%)	328 (60.1%)	332 (46.3%)	31 (50.8%)	33 (61.1%)	932 (49.5%)
CR during 2nd induction cycles	19 (3.8%)	36 (6.6%)	43 (6.0%)	21 (34.4%)	3 (5.6%)	122 (6.5%)
CR post induction	6 (1.2%)	7 (1.3%)	25 (3.5%)	1 (1.6%)	1 (1.9%)	40 (2.1%)
No CR by D1	273 (54.0%)	175 (32.1%)	317 (44.2%)	8 (13.1%)	17 (31.5%)	790 (41.9%)
CR(D2) status						
CR, by end of all induction course(s)	253 (50.0%)	387 (70.9%)	437 (60.9%)	55 (90.2%)	39 (72.2%)	1171 (62.2%)
CR during 1st induction cycles	226 (44.7%)	338 (61.9%)	333 (46.4%)	32 (52.5%)	35 (64.8%)	964 (51.2%)
CR during 2nd induction cycles	27 (5.3%)	49 (9.0%)	104 (14.5%)	23 (37.7%)	4 (7.4%)	207 (11.0%)
No CR by D2	253 (50.0%)	159 (29.1%)	280 (39.1%)	6 (9.8%)	15 (27.8%)	713 (37.8%)
CR(D3) status						
CR, by end of all protocol treatment	265 (52.4%)	392 (71.8%)	477 (66.5%)	56 (91.8%)	39 (72.2%)	1229 (65.2%)
CR during 1st induction cycles	226 (44.7%)	338 (61.9%)	333 (46.4%)	32 (52.5%)	35 (64.8%)	964 (51.2%)
CR during 2nd induction cycles	27 (5.3%)	49 (9.0%)	104 (14.5%)	23 (37.7%)	4 (7.4%)	207 (11.0%)
CR post induction	12 (2.4%)	5 (0.9%)	40 (5.6%)	1 (1.6%)	0 (0.0%)	58 (3.1%)
No CR by D3	241 (47.6%)	154 (28.2%)	240 (33.5%)	5 (8.2%)	15 (27.8%)	655 (34.8%)

Suppl. Figure 1. CR Rates by Induction Failure Definition D1-3



Suppl. Figure 1 shows slight difference in the CR rate between different induction failure definitions

Suppl. Table 2. CR Rates by induction failure definition D3, before and after transplant

	10201 (N=506)	10503 (N=546)	10603 (N=717)	10801 (N=61)	11001 (N=54)	Total (N=1884)
CR (D3) status						
CR, by end of all protocol treatment	265 (52.4%)	392 (71.8%)	477 (66.5%)	56 (91.8%)	39 (72.2%)	1229 (65.2%)
CR prior to transplant	32 (6.3%)	143 (26.2%)	271 (37.8%)	5 (8.2%)	20 (37.0%)	471 (25.0%)
CR post transplant	1 (0.2%)	0 (0.0%)	7 (1.0%)	0 (0.0%)	0 (0.0%)	8 (0.4%)
CR no transplant	232 (45.8%)	249 (45.6%)	199 (27.8%)	51 (83.6%)	19 (35.2%)	750 (39.8%)
No CR by D3	241 (47.6%)	154 (28.2%)	240 (33.5%)	5 (8.2%)	15 (27.8%)	655 (34.8%)

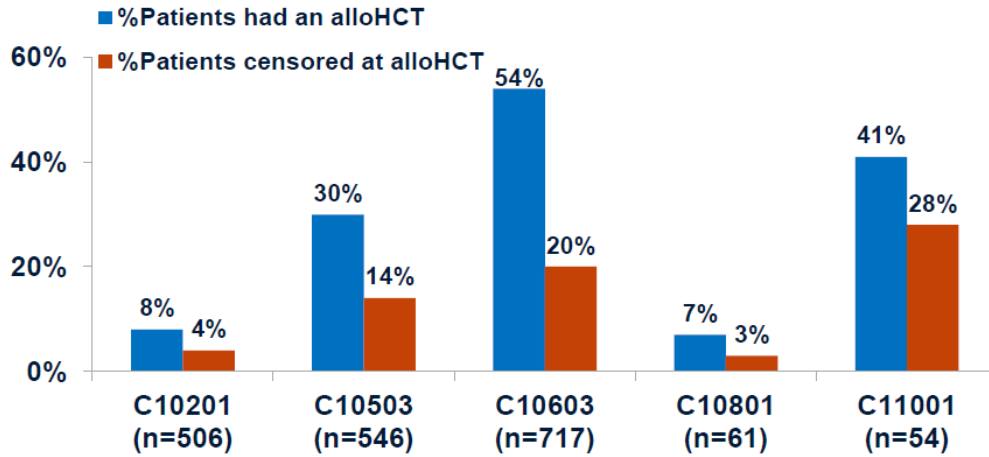
****NOTE:** Transplant data was not systemically collected in CALGB trials, and hence the data on transplant was very limited and this data should be interpreted with caution.

Suppl. Table 3. Summary of patients who were considered induction failure by D1 but not by D2

Study	N	CR during 1 st induction	CR during 2 nd induction	Median EFS using D2, months (95% CI)
10603	62	1	61	23.8 (10.6-NE)
10201	26	18	8	10.8 (9.0-12.8)
10801	3	1	2	NE (NE-NE)
10503	23	10	13	12.1 (9.0-NE)
11001	3	2	1	4.4 (3.0-10.2)

****Note:** This analysis specifically explored patients who achieved a CR after 60 days post randomization, but prior to their reported end date of all induction course(s). All these patients were considered induction failures using D1, and had an EFS time of 60 days (1.97 months). Their median EFS using D2 are shown in the last column as comparisons.

Suppl. Figure 2. Transplant Rate and %Censored due to AlloHCT



Suppl. Figure 2 shows that the event of interest (relapse) occurred prior to transplantation in most cases

Suppl. Table 4. Variables that could influence EFS

Variables
Timing of CR1 used to define induction failure**
True CR vs. morphologic remission used to define induction failure
Non-adherence to protocol-defined induction
Disease evaluation schedule/frequency
Off-protocol HCT**
Other off-protocol anti-cancer therapy

**Note: not all the variables in the table are necessarily included in our analysis, but all of them have been included in the discussion section. The ones with the footnote are the ones we have included in the analysis.