

## Supplementary Materials for

### **Inhaled GM-CSF in neonatal mice provides durable protection against bacterial pneumonia**

Elizabeth M. Todd, Rashmi Ramani, Taylor P. Szasz, S. Celeste Morley\*

\*Corresponding author. Email: [morleys@wustl.edu](mailto:morleys@wustl.edu)

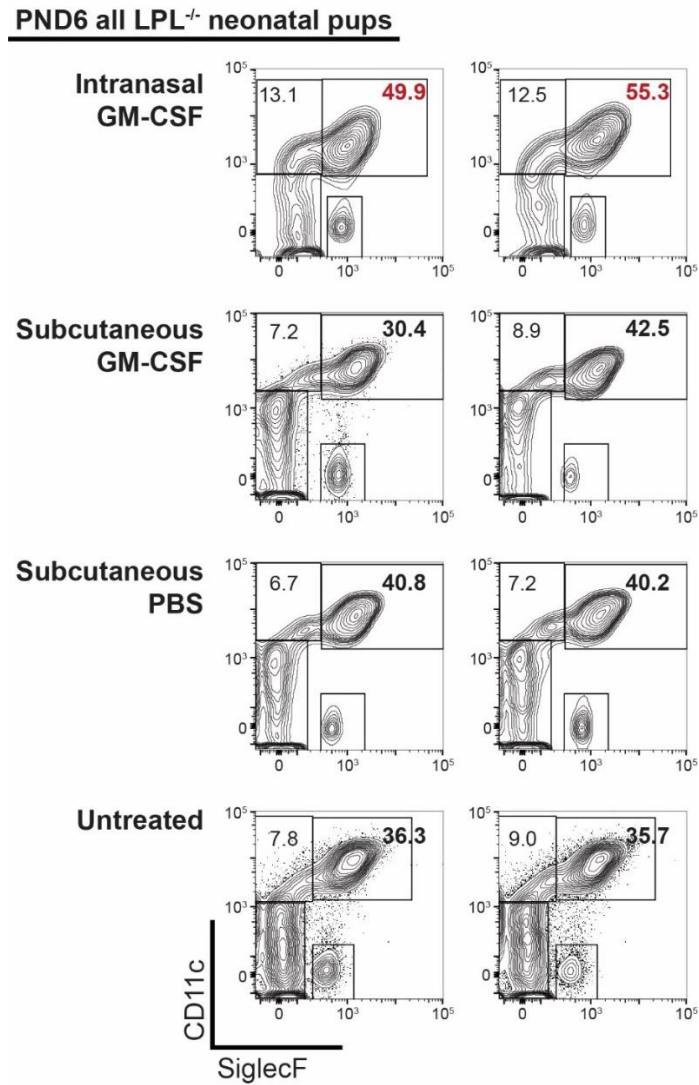
Published 14 August 2019, *Sci. Adv.* **5**, eaax3387 (2019)  
DOI: 10.1126/sciadv.aax3387

#### **This PDF file includes:**

Fig. S1. No increase in mature AMs following the subcutaneous administration of rGM-CSF (20 ng) to LPL<sup>-/-</sup> neonatal pups on DOB, PND1, and PND2.  
Fig. S2. No disruption of alveolarization observed after intranasal neonatal rGM-CSF therapy.  
Fig. S3. Increased SP-D in LPL<sup>-/-</sup> PND3 neonatal pups.

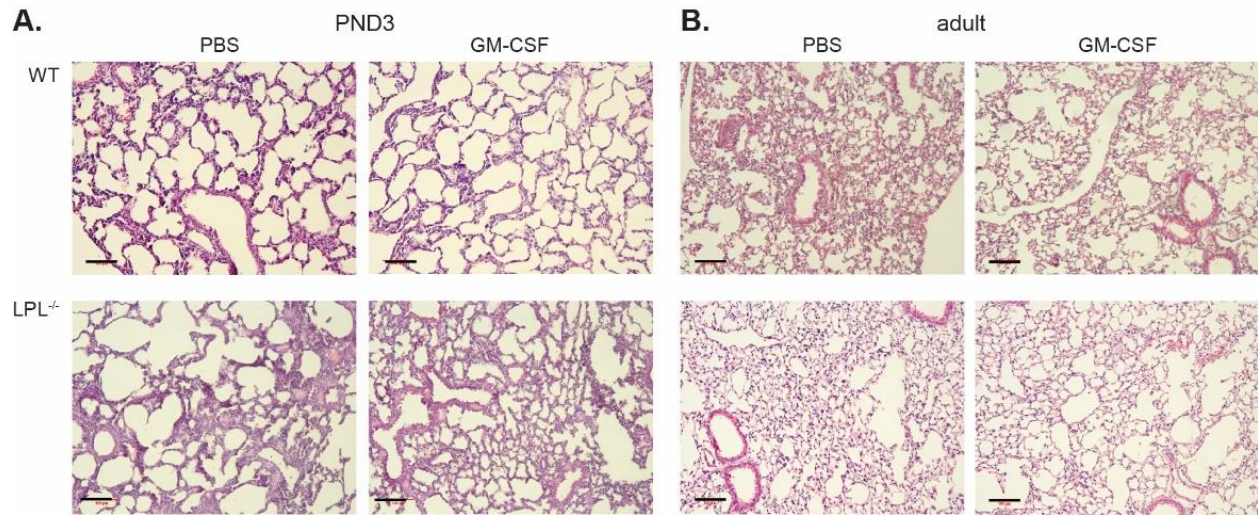
## Supplementary Materials

Figure S1



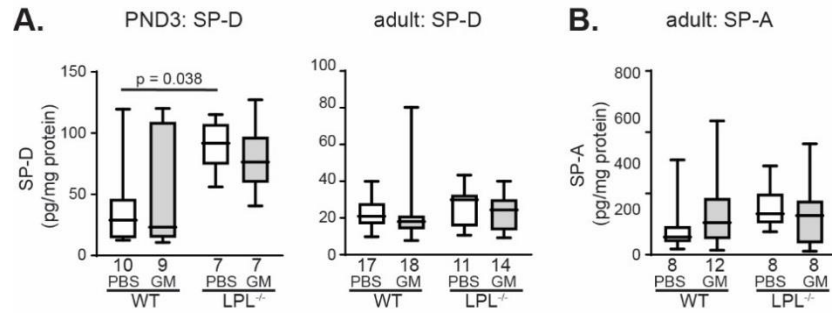
**Fig. S1. No increase in mature AMs following the subcutaneous administration of rGM-CSF (20 ng) to LPL<sup>-/-</sup> neonatal pups on DOB, PND1, and PND2.** Flow cytometry of whole lung homogenates from LPL<sup>-/-</sup> neonatal mice treated as indicated and sacrificed on PND6. Gated on CD45<sup>+</sup>, F4/80<sup>+</sup>/CD11b<sup>+</sup> cells as shown in Fig. 1.

**Figure S2**



**Fig. S2. No disruption of alveolarization observed after intranasal neonatal rGM-CSF therapy.** Lungs were obtained from (A) PND3 or (B) adult animals, and sections were stained with hematoxylin and eosin. Sections were reviewed in a blinded fashion by a veterinary pathologist. Scale bars = 100 μm.

**Figure S3**



**Fig. S3. Increased SP-D in LPL<sup>-/-</sup> PND3 neonatal pups.** (A) SP-D or (B) SP-A concentrations (normalized to total protein in lysates of lung tissue) in WT and LPL<sup>-/-</sup> mice (PND3 pups or adult) after receiving *i.n.* neonatal therapy with rGM-CSF (GM; gray bars) or PBS (open bars). Line at median; p-value determined with Mann-Whitney; n of each group listed below x-axes; data combined from two independent cohorts of animals.