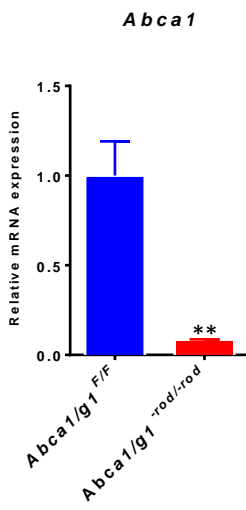
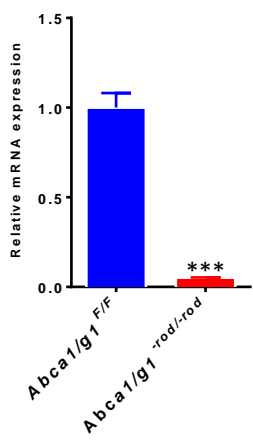


Supplemental Figure S1

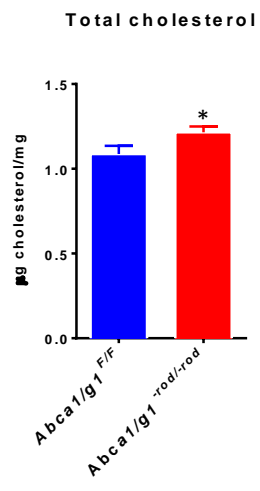
A



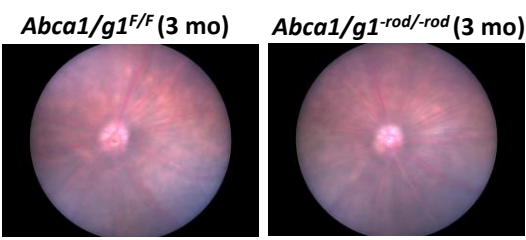
Abcg1



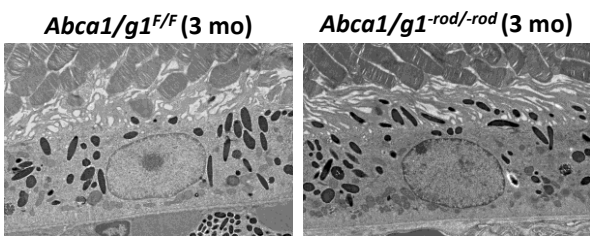
B



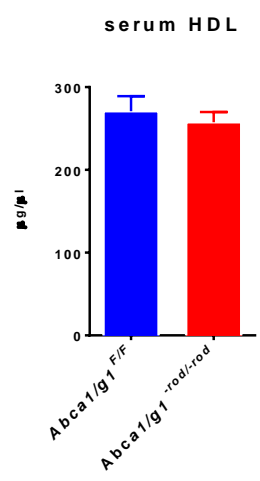
C



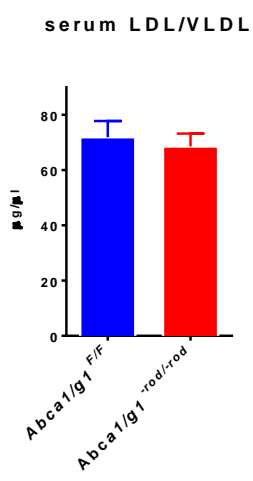
D



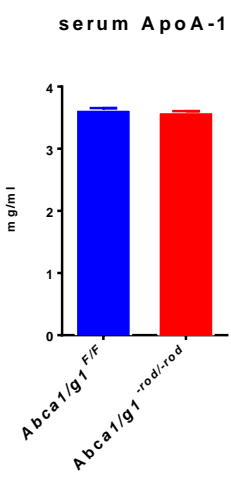
E



F



G



Supplemental Figure S1. Deletion of *Abca1* and *Abcg1* in rod photoreceptors increases retinal cholesterol but does not affect the retina histopathologically in young mice

(A) *Abca1* and *Abcg1* expression in isolated rod photoreceptors from *Abca1/g^{F/F}* and *Abca1/gI^{-rod/-rod}* mice (*Abca1/g^{F/F}*: n=4, *Abca1/gI^{-rod/-rod}*: n=3). **p<0.01 and ***p<0.001 by two-tailed unpaired t-test. (B) Analysis of total cholesterol in the neurosensory retina (μg/mg wet tissue weight; *Abca1/g^{F/F}*: n=9, *Abca1/gI^{-rod/-rod}*: n=11). *p<0.05 by two-tailed unpaired t-test. (C) Representative fundus images of 3-month-old *Abca1/g^{F/F}* and *Abca1/gI^{-rod/-rod}* mice retinas. (D) Representative electron microscopy images of 3-month-old *Abca1/g^{F/F}* and *Abca1/gI^{-rod/-rod}* mice retinas. Scar bars: 2 μm. (E) Serum HDL concentration (*Abca1/g^{F/F}*: n=6, *Abca1/gI^{-rod/-rod}*: n=6). (F) Serum LDL/VLDL concentration (*Abca1/g^{F/F}*: n=6, *Abca1/gI^{-rod/-rod}*: n=6). (G) Serum ApoA-1 concentration (*Abca1/g^{F/F}*: n=6, *Abca1/gI^{-rod/-rod}*: n=6). Values are mean ± SE.