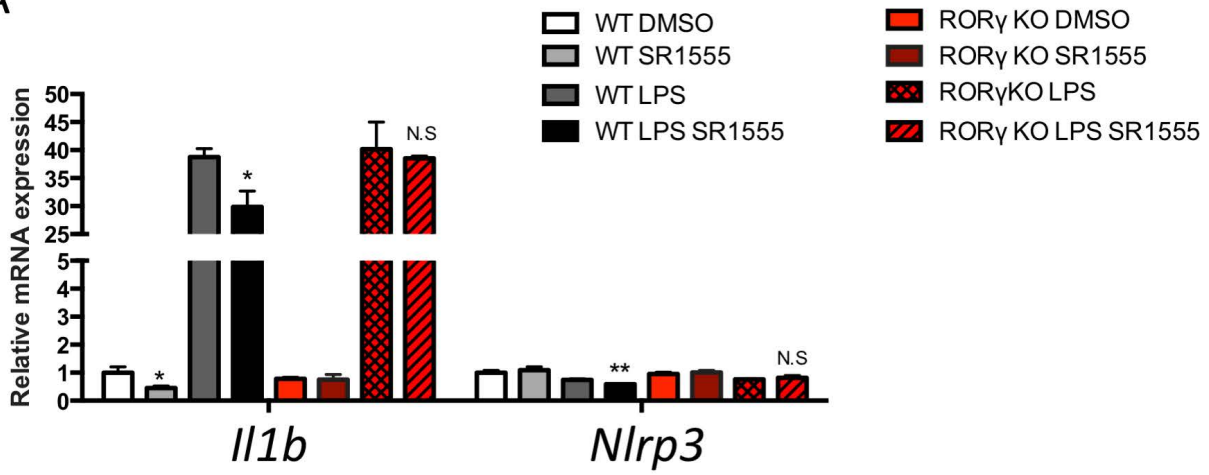
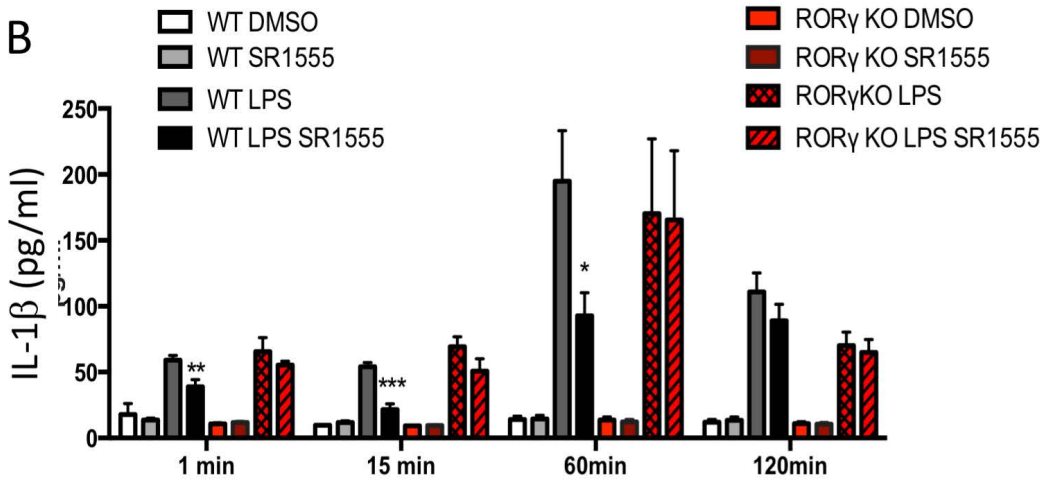


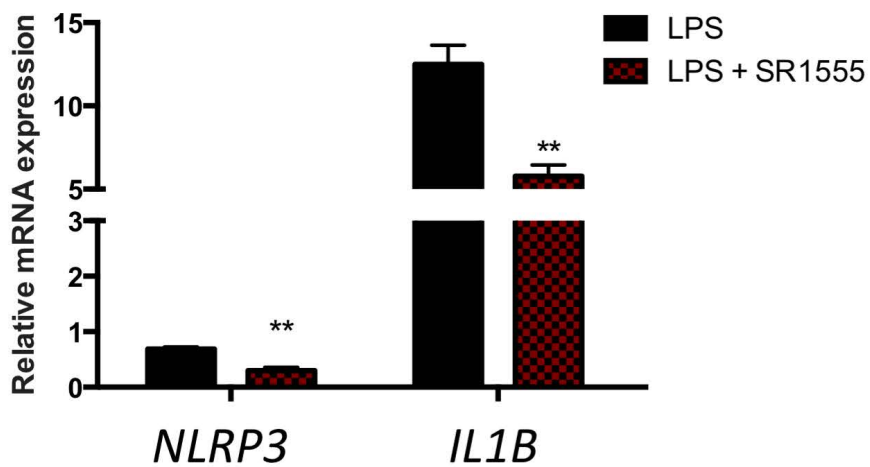
A



B



Supplemental Figure 1. The effect of SR1555 on the NLRP3 inflammasome requires ROR γ . *Nlrp3* and *Il1b* gene expression (A) and IL-1 β secretion (B) in BMDMs from WT or ROR γ KO mice in response LPS treatment in presence or absence of SR1555(10 μ M). * $p<0.05$, ** $p<0.01$, by Student's t test.



Supplemental Figure 2. SR1555 suppresses *NLRP3* and *IL1B* gene expression in human derived macrophages in response LPS treatment . SR1555(5 μ M). * $p<0.05$, ** $p<0.01$, by Student's t test.