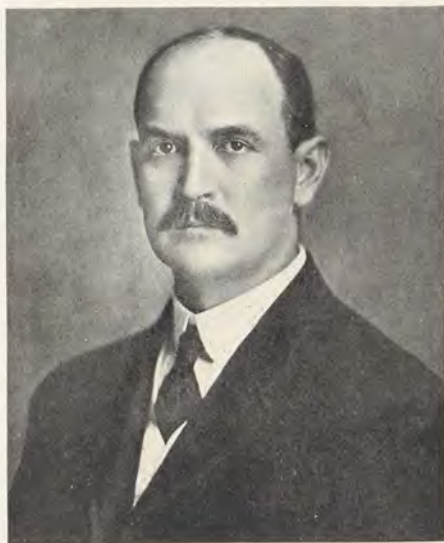


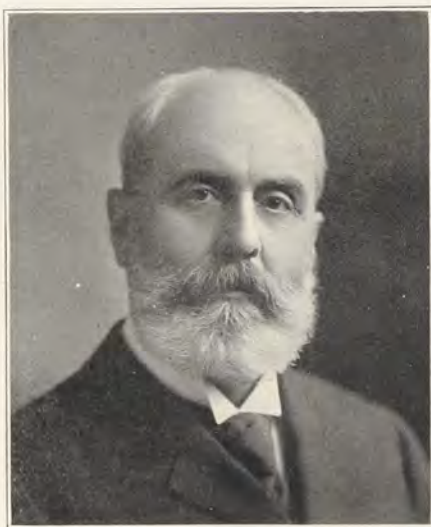
PROFESSORS



DAVID FRANKLIN HOUSTON.

DAVID FRANKLIN HOUSTON, Chancellor of the University; A. B., South Carolina College, 1887; A. M., Harvard, 1892; L. L. D., Tulane, 1903; L. L. D., Wisconsin, 1906; fellow at South Carolina College, 1887-1888; Superintendent of Schools, Spartanburg, S. C., 1888-1891; Graduate Student Harvard, 1891-1894; President Harvard Graduate Club, 1893-1894; Adjunct Professor of Political Science, University of Texas, 1894-1897; Associate Professor, 1897-1900; Professor, 1900-1902; Dean of the Faculty, University of Texas, 1899-1902; President Agricultural and Mechanical College of Texas, 1902-1905; President University of Texas, 1905-1908; member American Economic Association; member Southern Education Board; fellow Texas State Historical Society; author, "A Critical Study of Nullification in South Carolina," etc.

The Department of Arts and Sciences



MARSHALL SOLOMON SNOW.

MARSHALL SOLOMON SNOW, A. M., LL. D., Professor of History and Dean of the College Faculty; Acting Chancellor of the University, 1887-1891, 1907-1908; member Missouri Historical Society; corresponding member Minnesota Historical Society; honorary member Minnesota Historical Society; honorary member New Hampshire Historical Society; member American Historical Association, American Academy of Political Science.

CALVIN MILTON WOODWARD, PH D., LL. D., Thayer Professor of Mathematics and Applied Mechanics, and Dean of the Faculty of Engineering and Architecture; member National Council of Education; president American Association for the Advancement of Science; president Society for Promotion of Engineering Education; president Board of Education, St. Louis; Phi Beta Kappa.

Faculty of the Department of Arts and Sciences

GEORGE EDWARDS JACKSON, A.M., LL.D.	<i>Professor Emeritus of Latin</i>
FRANCIS EUGENE NIPHER, A.M., LL. D	<i>Wayman Crow Professor of Physics</i>
WILLIAM TRELEASE, S.D., LL.D . . .	<i>Englemann Professor of Botany</i>
OTTO HELLER, PH.D.	<i>Professor of the German Language and Literature</i>
EDWARD HARRISON KEISER, M.S., PH.D.	<i>Eliot Professor of Chemistry</i>
JOHN LANE VAN ORNUM, C.E.	<i>William Palm Professor of Civil Engineering</i>
FREDERIC ALDIN HALL, A.M., Litt.D. .	<i>Collier Professor of Greek</i>
FREDERICK WILLIAM SHIPLEY, PH.D. .	<i>Professor of Latin</i>
FREDERICK MAYNARD MANN, C.E., M.S.	<i>Professor of Architecture</i>
EDGAR JAMES SWIFT, PH.D.	<i>Professor of Psychology and Education</i>
GASTON DOUAY, A.M.	<i>Professor of the French Language and Literature</i>
ALEXANDER SUSS LANGSDORF, M.M.E. .	<i>Professor of Electrical Engineering</i>
HOLMES SMITH,* A.M.	<i>Professor of Drawing and the History of Art</i>
JAMES FRANCIS ABBOTT, PH.D.	<i>Professor of Zoology</i>
ERNEST LINWOOD OHLE, M.E.	<i>Professor of Mechanical Engineering</i>
CLARENCE ABIATHAR WALDO, PH.D. .	<i>Professor of Mathematics</i>
JOHN LIVINGSTON LOWES, PH.D. . . .	<i>Professor of English</i>
GEORGE THOMAS MOORE, A.M.	<i>Professor of Plant Physiology and Applied Botany</i>
THOMAS JAMES RILEY, PH.D.	<i>Professor of Sociology</i>
AMBROSE PARE WINSTON, PH.D. . . .	<i>Assistant Professor of Economics</i>
SAMUEL MONDS COULTER, PH.D. . . .	<i>Assistant Professor of Botany</i>
WINTHROP HOLT CHENERY, PH.D. . . .	<i>Ass't Prof. of Spanish, Italian and Romanic Philology</i>
WALTER EDWARD MCCOURT, A.M. . . .	<i>Assistant Professor of Geology</i>
CHARLES EDWARD CORY, S.T.B., PH.D.	<i>Assistant Professor of Philosophy</i>
LINDLEY PYLE, A.M.	<i>Assistant Professor of Physics</i>
GEORGE OSCAR JAMES, PH.D.	<i>Asst. Professor of Astronomy and Mathematics</i>
WILLIAM HENRY ROEVER, PH.D. . . .	<i>Assistant Professor of Mathematics</i>
ROBERT STINSON STARBIRD, A.B. . . .	<i>Assistant Professor of English</i>
GEORGE REEVES THROOP, PH.D. . . .	<i>Assistant Professor of Latin and Greek</i>
HERBERT RICHARD CROSS, A.M.	<i>Acting Ass't Prof. of Drawing and the History of Art</i>

*In Europe on leave of absence.

LOUIS CLEMENS SPIERING, A.D.G.†	<i>Instructor in Architecture</i>
ERNEST OSGOOD SWEETSER, B.S.	<i>Instructor in Civil Engineering</i>
FRANK HENRY EWERHARDT	<i>Director of Physical Training</i>
LEROY McMASTER, Ph.D.	<i>Instructor in Chemistry</i>
PHILIPP SEIBERTH, A.M.	<i>Instructor in German</i>
WILBUR TYSON TRUEBLOOD	<i>Instructor in Architecture</i>
ROLAND GREENE USHER, Ph.D.	<i>Instructor in American History</i>
JAMES EDWARD ROUTH, JR., Ph.D.	<i>Instructor in English</i>
JOHN HART BROWN, A.M.	<i>Instructor in French</i>
ELMER GUY HOOPER, B.S.	<i>Instructor in Civil Engineering</i>
GEORGE WILLIAM LAMKE, B.S.	<i>Instructor in Electrical Engineering</i>
GEORGE ALLAN LINDSAY, A.M.	<i>Instructor in Physics</i>
FRANZ ALFRED BERGER, B.S., M.E.	<i>Instructor in Mechanical Engineering</i>
FRANCIS MITCHELL CAYOU	<i>Instructor in Physical Training</i>
JAMES KENNEDY BLACK, B.S.	<i>Instructor in Chemistry</i>
GEORGE BENJAMIN MANGOLD, Ph.D.	<i>Instructor in Sociology</i>
GEORGE RALEIGH COFFMAN, A.M.	<i>Instructor in English</i>
JAMES HUTCHISON FORSYTHE, B.S.	<i>Instructor in Architecture</i>
DELOS CHARLES NICHOLSON	<i>Instructor in Drawing</i>
JOSEPH CHAPPEL RAYWORTH, A.M.	<i>Instructor in Mathematics</i>
MAURICE FAURE	<i>Assistant in French</i>
MALCOLM EARL WILSON, M.S.	<i>Assistant in Geology</i>
ALICE WALDO, A.B.	<i>Assistant in English</i>
CLARENCE DELBERT LEARN	<i>Teaching Fellow in Botany</i>
MAX DIEZ, A.B.	<i>Fellow in German</i>
EDITH FAULKNER MILLER, A.B.	<i>Librarian</i>
MRS. ROBERT LONDON,	<i>Proctor of McMillan Hall</i>
MARY LOUISE BABCOCK	<i>Director of Physical Training for Women</i>
FRANCES LEWIS BISHOP, M.D.	<i>Medical Adviser to the Director of Physical Training for Women</i>

Architecte Diplome par le Government Francais.

The Law School



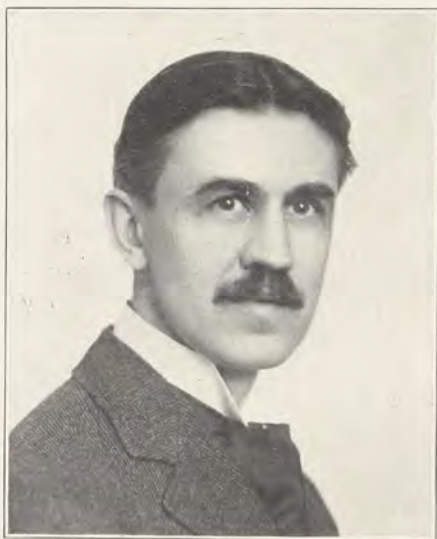
WILLIAM SAMUEL CURTIS.

WILLIAM SAMUEL CURTIS, L. L. B., L. L. D., Dean of the Law Faculty; born Wayne County, Ind., 1850; A. B., Washington University, 1873; L. L. B., St. Louis Law School, 1876; practiced law in Omaha, Neb., with firm of Curtis and Keysor, later Curtis and Shields; L. L. D., Washington University, 1905; Dean of the Law School of Washington University since September, 1894.

Faculty of the Law School

- WILLIAM SAMUEL CURTIS, A.B., LL.B., LL.D. *Dean of Law Faculty*
WILLIAM WINCHESTER KEYSOR, LL.B. . . . *Professor of Law*
FREDERICK AUGUST WISLIZENUS, A.B., LL.B. *Professor of Law*
RICHARD L. GOODE, LL.B. *Madill Professor of Equity*
FRANKLIN FERRISS, LL.B. *Madill Professor of Contracts*
FREDERICK NEWTON JUDSON, A.B., LL.B., LL.D.
Lecturer on Statutory Construction
ISAAC HENRY LIONBERGER, A.M. *Lecturer on Law of Corporations*
CAMPBELL ORRICK BISHOP, A.M., LL.B., LL.D.
Lecturer on Criminal Law
HENRY THOMPSON KENT, LL.B. *Lecturer on Jurisdiction of Federal Courts*
WALTER D. COLES, LL.B. *Lecturer on Bankruptcy*
EDWARD CRANCH ELIOT, A.M., LL.B. . . . *Lecturer on International Law*
PERCY WERNER, LL.B. *Lecturer on Insurance*
DANIEL N. KIRBY, A.B., LL.B. *Lecturer on Constitutional Law*

The Medical School



WILLIAM HOMER WARREN.

WILLIAM HOMER WARREN, A. M., Ph. D., Professor of Chemistry, Physiological Chemistry and Toxicology, and Dean of the Medical School; A. B., Harvard, 1889; A. M., 1891; Ph. D., 1892; Technical and Consulting Chemist, New York, 1892-1898; Instructor in Chemistry, St. Louis Medical College, 1898; Assistant Professor of Chemistry, Medical Department of Washington University, 1899; Professor of Chemistry, 1900; Secretary of Medical Faculty, 1901; studied at Heidelberg under Kossel, summer semesters, 1905-1906; Dean of Medical Faculty, 1908; member of American Chemical Society and of German Chemical Society. Phi Beta Kappa.

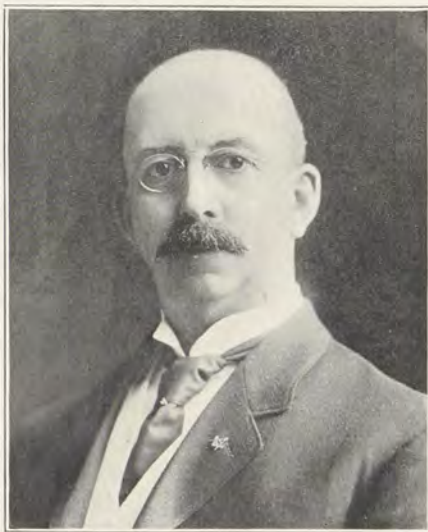
Faculty of the Medical School

- WILLIAM HOMER WARREN, PH.D., DEAN . . . *Professor of Chemistry, Physiological Chemistry, and Toxicology*
- PAUL GERVAIS ROBINSON, A.B., M.D., LL.D. . . . *Professor Emeritus of the Principles and Practice of Medicine*
- JEROME KEATING BAUDUY, M.D., LL.D. . . . *Professor Emeritus of Psychological Medicine and Diseases of the Nervous System*
- GUSTAV BAUMGARTEN, M.D., LL.D. . . . *Professor of the Practice of Medicine*
- HERMAN TUHOLSKE, M.D., LL.D. . . . *Professor of the Practice of Surgery and Clinical Surgery*
- WASHINGTON EMIL FISCHER, M.D. . . . *Professor of Clinical Medicine*
- WILLIAM AUGUSTUS HARDAWAY, A.M., M.D., LL.D. . . . *Professor of Diseases of the Skin, and Syphilis*
- HORATIO N. SPENCER, A.M., M.D., LL.D. . . . *Professor of Otology*
- HENRY SCHWARZ, M.D. . . . *Professor of Obstetrics and Gynecology*
- PAUL YOER TUPPER, M.D. . . . *Professor of Applied Anatomy and Operative Surgery*
- EDWARD WATT SAUNDERS, M.D. . . . *Professor of Diseases of Children and Clinical Midwifery*
- NORMAN B. CARSON, M.D. . . . *Professor of Clinical Surgery*
- JOHN BLASDEL SHAPLEIGH, A.B., M.D. . . . *Professor of Otology*
- ROBERT JAMES TERRY, A.B., M.D., Secretary . . . *Professor of Anatomy*
- JOHN GREEN, A.M., S.B., M.D., LL.D. . . . *Special Professor of Ophthalmology*
- FRANCIS RHODES FRY, A.M., M.D. . . . *Professor of Diseases of the Nervous System*
- FRANK ADAMS GLASGOW, A.B., M.D. . . . *Professor of Clinical Gynecology*
- HARVEY GILMER MUDD, M.D. . . . *Professor of Fractures and Dislocations, and Clinical Surgery*
- EDGAR MOORE SENSENEY, M.D. . . . *Professor of Diseases of the Nose, Throat and Chest*
- AARON JOHN STEELE, M.D. . . . *Professor of Orthopedic Surgery*
- JOSEPH GRINDON, PH.B., M.D. . . . *Professor of Clinical Dermatology and Syphilis*
- ERNST FRIEDRICH TIEDEMANN, M.D. . . . *Professor of Pathology and Bacteriology*
- HENRY MILTON WHELPLEY, PH.G., M.D., F.R.M.S. . . . *Professor of Materia Medica and Pharmacy*
- GEORGE MARVIN TUTTLE, A.B., M.D. . . . *Professor of Clinical Pediatrics*

ELSWORTH SMITH, JR., A.M., M.D.	<i>Professor of Clinical Medicine</i>
WILLARD BARTLETT, A.M., M.D.	<i>Professor of Experimental Surgery</i>
DANIEL NOYES KIRBY, A.B., LL.B.	<i>Professor of Medical Jurisprudence</i>
HENRY STURGEON CROSSEN, M.D.	<i>Professor of Clinical Gynecology</i>
HENRY LINCOLN WOLFNER, M.D.	<i>Professor of Clinical Ophthalmology</i>
ARTHUR EUGENE EWING, A.B., M.D.	<i>Professor of Clinical Ophthalmology</i>
EDWIN CLARK BURNETT, M.D.	<i>Clinical Professor of Genito-Urinary Diseases</i>
HARRY McCABE JOHNSON, M.D.	<i>Clinical Professor of Genito-Urinary Surgery</i>
VILRAY PAPIN BLAIR, A.M., M.D.	<i>Clinical Professor of Surgery</i>
ALBERT ERNST TAUSSIG, A.B., M.D.	<i>Clinical Professor of Medicine</i>
JOHN ZAHORSKY, M.D.	<i>Clinical Professor of Pediatrics</i>
CHARLES HENRY DIXON, M.D.	<i>Clinical Professor of Rectal Surgery</i>
GREENFIELD SLUDER, M.D.	<i>Clinical Professor of Diseases of the Nose and Throat</i>
LOUIS HENRY BEHRENS, M.D.	<i>Clinical Professor of Diseases of the Chest</i>
GIVEN CAMPBELL, JR., M.D.	<i>Clinical Professor of Diseases of the Nervous System</i>
HENRY S. BROOKES, PH.G., M.D.	<i>Clinical Professor of Medicine</i>
ERNST JONAS, M.D.	<i>Clinical Professor of Surgery</i>
WILLIAM A. SHOEMAKER, M.D.	<i>Clinical Professor of Ophthalmology</i>
JOSEPH W. CHARLES, A.B., M.D.	<i>Clinical Professor of Ophthalmology</i>
MEYER WIENER, M.D.	<i>Clinical Professor of Ophthalmology</i>
HUGH MCGUIGAN, PH.D., M.D.	<i>Assistant Professor of Pharmacology</i>
EDWARD MUELLER, PH.D.,	<i>Assistant Professor of Chemistry</i>
WILLIS HALL, M.D.	<i>Clinical Lecturer on Gynecology</i>
PHILIP HOFFMAN, M.D.	<i>Clinical Lecturer on Orthopedic Surgery</i>
MALCOLM A. BLISS, M.D.	<i>Clinical Lecturer on Neurology</i>
JESSE S. MYER, A.B., M.D.	<i>Lecturer on Clinical Chemistry and Microscopy</i>
JOHN C. SALTER, A.B., M.D.	<i>Lecturer on Clinical Chemistry and Microscopy</i>
ADRIEN S. BLEYER, M.D.	<i>Lecturer on Hygiene and Sanitary Science</i>
GEORGE GELLHORN, M.D.	<i>Lecturer on Gynecology</i>
RICHARD H. FUHRMANN, M.D.	<i>Lecturer on Obstetrics and Gynecology</i>
ADOLPH G. SCHLOSSSTEIN, M.D.	<i>Lecturer on Obstetrics and Gynecology</i>
FRED J. TAUSSIG, A.B., M.D.	<i>Lecturer on Gynecology</i>
SELDEN SPENCER, A.B., M.D.	<i>Lecturer on Otology</i>
ALBERT F. KOETTER, M.D.	<i>Lecturer on Otology</i>
WILLIAM M. ROBERTSON, M.D.	<i>Lecturer on Genito-Urinary Surgery</i>

WILLIAM S. DEUTSCH, M.D.	<i>Lecturer on Surgery</i>
NATHANIEL ALLISON, M.D.	<i>Lecturer on Orthopedic Surgery</i>
RALPH WALTER MILLS, B.Sc., M.D.	<i>Lecturer on Dietetics</i>
WILLIAM THOMAS COUGHLIN, M.D.	<i>Instructor in Anatomy</i>
CARL AUGUST ZIMMERMANN, M.D.	<i>Instructor in Medicine</i>
HENRY ARTHUR GEITZ, M.D.	<i>Instructor in Minor Surgery and Bandaging</i>
MEYER J. LIPPE, M.D.	<i>Instructor in Clinical Pediatrics</i>
AARON LEVY, M.D.	<i>Instructor in Clinical Pediatrics</i>
ROBERT E. SCHLUETER, M.D.	<i>Instructor in Clinical Surgery</i>
MALVERN B. CLOPTON, M.D.	<i>Instructor in Clinical Surgery</i>
MOSES W. HOGE, M.D.	<i>Instructor in Clinical Neurology</i>
H. CLAY CREVELING, M.D.	<i>Instructor in Clinical Laryngology</i>
WILLIAM E. SAUER, M.D.	<i>Instructor in Clinical Laryngology</i>
OLIVER H. CAMPBELL, M.D.	<i>Instructor in Clinical Medicine</i>
LOUIS H. HEMPELMANN, M.D.	<i>Instructor in Clinical Medicine</i>
BERNARD W. MOORE, M.D.	<i>Instructor in Obstetrics</i>
HERMAN A. HANSEN, M.D.	<i>Instructor in Gynecology</i>
JULIUS H. GROSS, M.D.	<i>Instructor in Ophthalmology</i>
NATHANIEL M. SEMPLE, M.D.	<i>Instructor in Ophthalmology</i>
FREDERICK ENO WOODRUFF, M.D.	<i>Instructor in Ophthalmology</i>
LLEWELLYN WILLIAMSON, M.D.	<i>Instructor in Ophthalmology</i>
EUGENE T. SENSENEY, A.B., M.D.	<i>Instructor in Otology</i>
WALTER FISCHER, A.B., M.D.	<i>Instructor in Physical Diagnosis</i>
LEO CHRISTIAN HUELSMANN, M.D.	<i>Instructor in Medicine</i>
ARTHUR C. KIMBALL, A.B., M.D.	<i>Instructor in Gynecology</i>
VICTOR E. EMMEL, PH.D.	<i>Instructor in Histology and Embryology</i>
CHARLES DANFORTH, A.B.	<i>Instructor in Anatomy</i>
ROY HERBERT NICHOLL	<i>Instructor in Physiology</i>
HENRY W. BEWIG, M.D.	<i>Instructor in Medicine</i>
F. C. E. KUHLMANN, M.D.	<i>Instructor in Medicine</i>
JEROME E. COOK, M.D.	<i>Instructor in Medicine</i>
SAMUEL E. NEWMAN, M.D.	<i>Instructor in Surgery</i>
HENRY C. STORRS, M.D.	<i>Instructor in Obstetrics and Gynecology</i>
W. H. VOGT, M.D.	<i>Instructor in Obstetrics and Gynecology</i>
CHARLES LEONARD KLENK, M.D.	<i>Laboratory Assistant in Pathology and Bacteriology</i>
EUGENE P. COCKRELL, PH.G., M.D.	<i>Assistant and Demonstrator in Pharmacy</i>

The Dental School



JOHN HANGER KENNERLY.

JOHN HANGER KENNERLY, D. D. S., M. D., Dean of the Dental Faculty and Professor of Clinical Dentistry; member and Ex-President of Missouri State Dental Association; member and Ex-President of the St. Louis Dental Society; member of the National Dental Association; Ex-President and Ex-Secretary of the National Association of Dental Faculties; member of the Central District Dental Society of Missouri; corresponding member of the Illinois State Dental Association; President of the Institute of Dental Pedagogics, Delta Sigma Delta.

Faculty of the Dental School

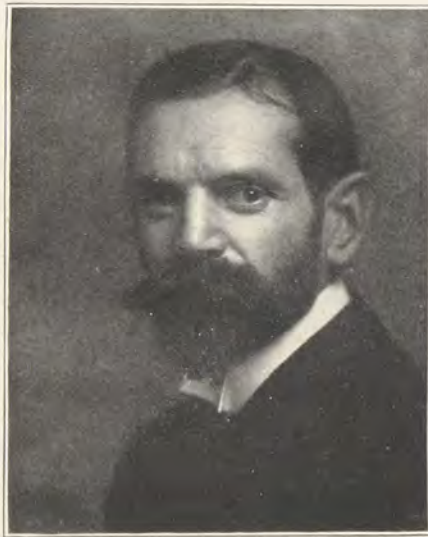
JOHN HANGER KENNERLY, M.D., DD..S., DEAN,	<i>Professor of Clinical Dentistry</i>
ALBERT HOMER FULLER, M.D., D.D.S. . . .	<i>Professor Emeritus of Operative Dentistry</i>
HERMANN PRINZ, M.D., D.D.S.	<i>Professor of Materia Medica, Therapeutics, Bacteriology and Pathology</i>
WALTER MANNY BARTLETT, D.D.S.	<i>Secretary, Professor of Prosthetic Dentistry</i>
BENNO EDWARD LISCHER, D.M.D.	<i>Professor of Orthodontia</i>
BLAND NIXON PIPPIN, D.M.D.	<i>Professor of Metallurgy and Physics</i>
FRANKLIN MILLER, LL.B.	<i>Professor of Dental Jurisprudence</i>
OLIVER HOWARD CAMPBELL, M.D.	<i>Professor of Physiology</i>
DECOURCEY LINDSLEY, M.D., D.D.S. . . .	<i>Professor of Operative Dentistry</i>
HARRY MORGAN MOORE, M.D.	<i>Professor of Anatomy</i>
VILRAY PAPIN BLAIR, M.D.	<i>Professor of Oral Surgery</i>
JESSE DUNCAN WHITE, D.M.D.	<i>Lecturer on Crown and Bridge Work, and Porcelain Art</i>
JAMES ALEXANDER BROWN, D.D.S.	<i>Assistant Professor of Histology and Embryology</i>
EWING PAUL BRADY, D.D.S.	<i>Assistant Professor of Chemistry</i>
FREDERICK WILLIAM HORSTMAN, D.D.S. . .	<i>Assistant Professor of Dental Anatomy, and Instructor in Operative Technique</i>
LOUIS GEORGE NEUHOFF, D.D.S.	<i>Demonstrator in Charge of Infirmary</i>
FLORIAN ADOLPH NEUHOFF, D.D.S. . . .	<i>Demonstrator in Prosthetic Dentistry</i>
LEGRAND MARVIN COX, D.D.S.	<i>Demonstrator in Operative Dentistry</i>
EDGAR HAYDEN KEYS, D.D.S.	<i>Demonstrator in Operative Dentistry</i>
URLING CAY RUCKSTUHL, D.D.S.	<i>Assistant in Orthodontia</i>
JOHN GODFREY URBAN	<i>Assistant in Chemical Laboratory</i>
ROMIE HENRY MILLER	<i>Assistant in Histology</i>
GREENFIELD SLUDER, M.D.	<i>Special Lecturer on Diseases of the Nose and Throat</i>
HARRY FREDERICK D'OENCH, D.M.D. . . .	<i>Special Lecturer</i>

Clinical Instructors

JAMES B. NEWBY, D.D.S.
ABEL J. PROSSER, D.D.S.
ORME H. MANHARD, D.M.D.
MAX FENDLER, D.M.D.
WILLIAM CONRAD, D.D.S.
ADAM FLICKINGER, D.D.S.
JAMES F. WALLACE, D.D.S.
WILLARD A. RODDY, D.D.S.
FRANK M. WILLARD, D.D.S.
JOSEPH L. BRIDGFORD, D.D.S.
ALONZO W. RUE, D.M.D.
LOUIS H. KRAFT, D.M.D.
JOHN G. SCHWARZ, D.D.S.
CHARLES E. KNEPP, D.D.S.
LEGRAND M. COX, D.D.S.
ALFRED TRIGG, D.D.S.

THEODORE L. PEPPERLING, D.D.S.
JOHN G. HARPER, D.D.S.
PETER H. EISLOEFFEL, D.D.S.
P. HOLM MORRISON, M.D., D.D.S.
FRED H. ACHELPOHL, D.D.S.
WILLIAM G. COX, D.D.S.
WILLIAM M. CARTER, D.D.S.
WILLIAM T. RUTLEDGE, D.M.D.
JOHN T. FRY, D.D.S.
BEN F. STEVENS, D.M.D.
CHRISTIAN MUETZE, D.M.D.
ROBERT D. WOELK, D.D.S.
HENRY F. HAGEMANN, D.D.S.
RUDOLPH C. SEIBERT, D.D.S.
FLORIAN A. NEUHOFF, D.D.S.
JASPER D. PEAK, D.D.S.

The School of Fine Arts



EDMUND HENRY WUERPEL.

EDMUND HENRY WUERPEL, Director of School of Fine Arts; First Sellev Medal, Manual Training School; Secretary (1891-1893), and honorary member (1894), American Art Association, Paris; Recording Secretary, Paris Advisory Committee, Columbian Exposition, Chicago, 1893; member of Jury of Selection, American Section, Universal Exposition, Paris, 1900; member of Jury of Selection and Jury of Awards, Louisiana Purchase Exposition, St. Louis, 1904; active member and Vice-President Society of Western Artists; President St. Louis Artists' Guild, 1907-1908; President 2x4 Club, 1905-1907; Silver Medal, Louisiana Purchase Exposition, 1904; Silver Medal, Lewis and Clark Exposition, Portland, 1905.

Faculty of the School of Fine Arts

EDMUND HENRY WUERPEL, DIRECTOR	<i>Lecturer and Instructor in Composition and Artistic Anatomy</i>
CHARLES PERCY DAVIS	<i>Instructor in the Antique and Metal Work</i>
HENRIETTA ORD JONES	<i>Instructor in Ceramic Decoration and Pottery</i>
WILLIAM HENRY GRUEN,	<i>Instructor in Architectural and Mechanical Drawing</i>
DAWSON DAWSON-WATSON	<i>Instructor in Life Classes and Wood-Carving</i>
CORDELIA TAYLOR BAKER	<i>Instructor in Bookbinding</i>
GUSTAV VON SCHLEGELL	<i>Instructor in Portraiture</i>
ESTHER LINCOLN FELLOWS	<i>Instructor in Decorative Design and Applied Art</i>
BERTHOLD WIDMANN	<i>Instructor in Illustration</i>
GUSTAV F. GOETSCH	<i>Instructor in Still Life and Etching</i>
VICTOR S. HOLM	<i>Instructor in Modeling</i>
NEELY TROWBRIDGE	<i>Instructor in Saturday Drawing Class and Assistant in Elementary Design</i>
MARGARET BARNES	<i>Librarian</i>
FANNY E. PERKINS, A.B.	<i>Secretary</i>

