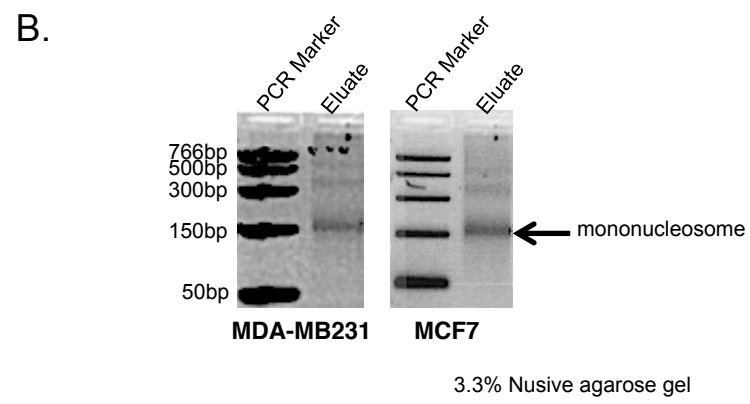
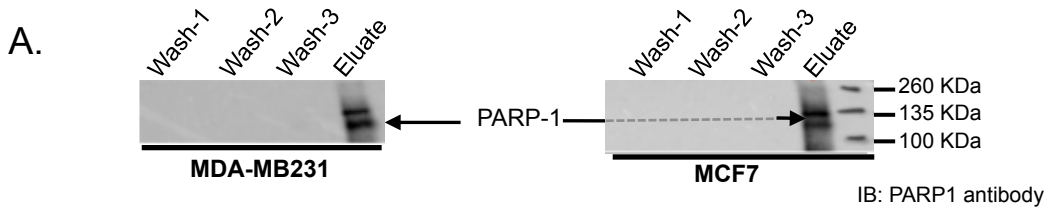


**Figure S2**



**Figure S2:** CHIP assay. Nuclei from MCF7 and MDA-MB231 cells were formaldehyde-fixed and chromatin MNase digested to yield < 450 bp fragments. Chromatin was subjected to ChIP using PARP1 antibody. **A)** Western blot analyses of PARP1 association with the eluted ChIP experiment, validating the presence of PARP1. **B)** Resultant DNA fragments elution steps were purified and analyzed on 3% Nusieve™ agarose gel electrophoresis. DNA mononucleosomal fragment (arrow) from elution step was excised and subjected to Illumina sequencing.