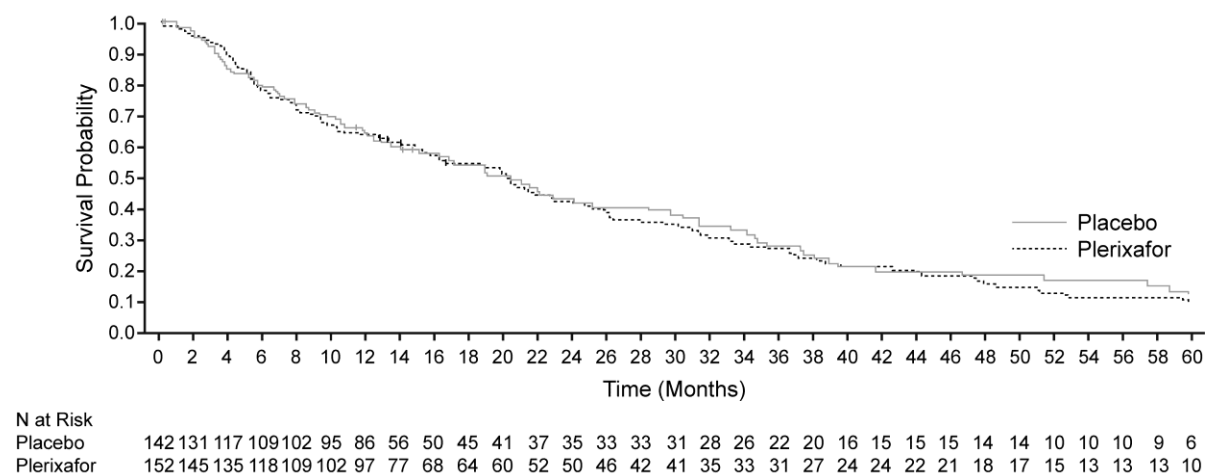


Supplementary Figure 2. Triple endpoint survival in patients with multiple myeloma stratified by treatment group



The graph shows triple endpoint survival in patients with multiple myeloma (MM) who were enrolled in the long-term follow-up study of patients with MM who had received plerixafor or placebo in combination with granulocyte colony-stimulating factor for stem cell mobilization. A *triple endpoint event* was defined as death, progression, relapse, or introduction of additional medication for MM, whichever came first. Assessment of triple endpoint survival over 5 years showed no statistically significant difference (log-rank, $P = .752$; Wilcoxon, $P = .944$) between the 2 treatment groups.