

DOI: 10.1038/s41467-018-07407-3

OPEN

Author Correction: The prognostic effects of somatic mutations in ER-positive breast cancer

Obi L. Griffith^{1,2,3,4}, Nicholas C. Spies¹, Meenakshi Anurag^{5,6}, Malachi Griffith^{1,2,3,4}, Jingqin Luo^{3,7}, Dongsheng Tu⁸, Belinda Yeo⁹, Jason Kunisaki¹, Christopher A Miller^{1,2}, Kilannin Krysiak^{1,2}, Jasreet Hundal¹, Benjamin J Ainscough¹, Zachary L. Skidmore¹, Katie Campbell¹, Runjun Kumar², Catrina Fronick¹, Lisa Cook¹, Jacqueline E. Snider², Sherri Davies², Shyam M. Kavuri^{5,6}, Eric C. Chang^{5,6}, Vincent Magrini^{1,4,10}, David E. Larson¹, Robert S Fulton^{1,4}, Shuzhen Liu⁸, Samuel Leung⁸, David Voduc⁸, Ron Bose², Mitch Dowsett⁹, Richard K. Wilson^{1,3,4}, Torsten O. Nielsen⁸, Elaine R Mardis^{1,3,4,10} & Matthew J. Ellis^{5,6}

Correction to: *Nature Communications*; <https://doi.org/10.1038/s41467-018-05914-x>; published online 04 September 2018

The original version of this Article contained errors in the depiction of confidence intervals in the NF1 BCSS data illustrated in Fig. 3b. These have now been corrected in both the PDF and HTML versions of the Article. The incorrect version of Fig. 3b is presented below.

Published online: 14 November 2018



Open Access This article is licensed under a Creative Commons Attribution 4.0 International License, which permits use, sharing, adaptation, distribution and reproduction in any medium or format, as long as you give appropriate credit to the original author(s) and the source, provide a link to the Creative Commons license, and indicate if changes were made. The images or other third party material in this article are included in the article's Creative Commons license, unless indicated otherwise in a credit line to the material. If material is not included in the article's Creative Commons license and your intended use is not permitted by statutory regulation or exceeds the permitted use, you will need to obtain permission directly from the copyright holder. To view a copy of this license, visit <http://creativecommons.org/licenses/by/4.0/>.

© The Author(s) 2018

¹McDonnell Genome Institute, Washington University School of Medicine, St. Louis 63108, MO, USA. ²Department of Medicine, Division of Oncology, Washington University School of Medicine, St. Louis 63110, MO, USA. ³Siteman Cancer Center, Washington University School of Medicine, St. Louis 63110, MO, USA. ⁴Department of Genetics, Washington University School of Medicine, St. Louis 63110, MO, USA. ⁵Lester and Sue Smith Breast Center and Dan L. Duncan Cancer Center, Baylor College of Medicine, Houston 77030, TX, USA. ⁶Departments of Medicine and Molecular and Cellular Biology, Baylor College of Medicine, Houston 77030, TX, USA. ⁷Division of Biostatistics, Washington University School of Medicine, St. Louis 63110, MO, USA. ⁸Genetic Pathology Evaluation Centre, University of British Columbia, Vancouver V6H 3Z6, Canada. ⁹Institute of Cancer Research, London SM2 5NG, UK. ¹⁰Present address: Nationwide Children's Hospital and Department of Pediatrics, The Ohio State University College of Medicine, Columbus 43205, OH, USA. These authors contributed equally: Obi L. Griffith, Nicholas C. Spies, Meenakshi Anurag. The original article can be found online at <https://doi.org/10.1038/s41467-018-05914-x>. Correspondence and requests for materials should be addressed to E.R.M. (email: elaine.mardis@nationwidechildrens.org) or to M.J.E. (email: mjellis@bcm.edu)

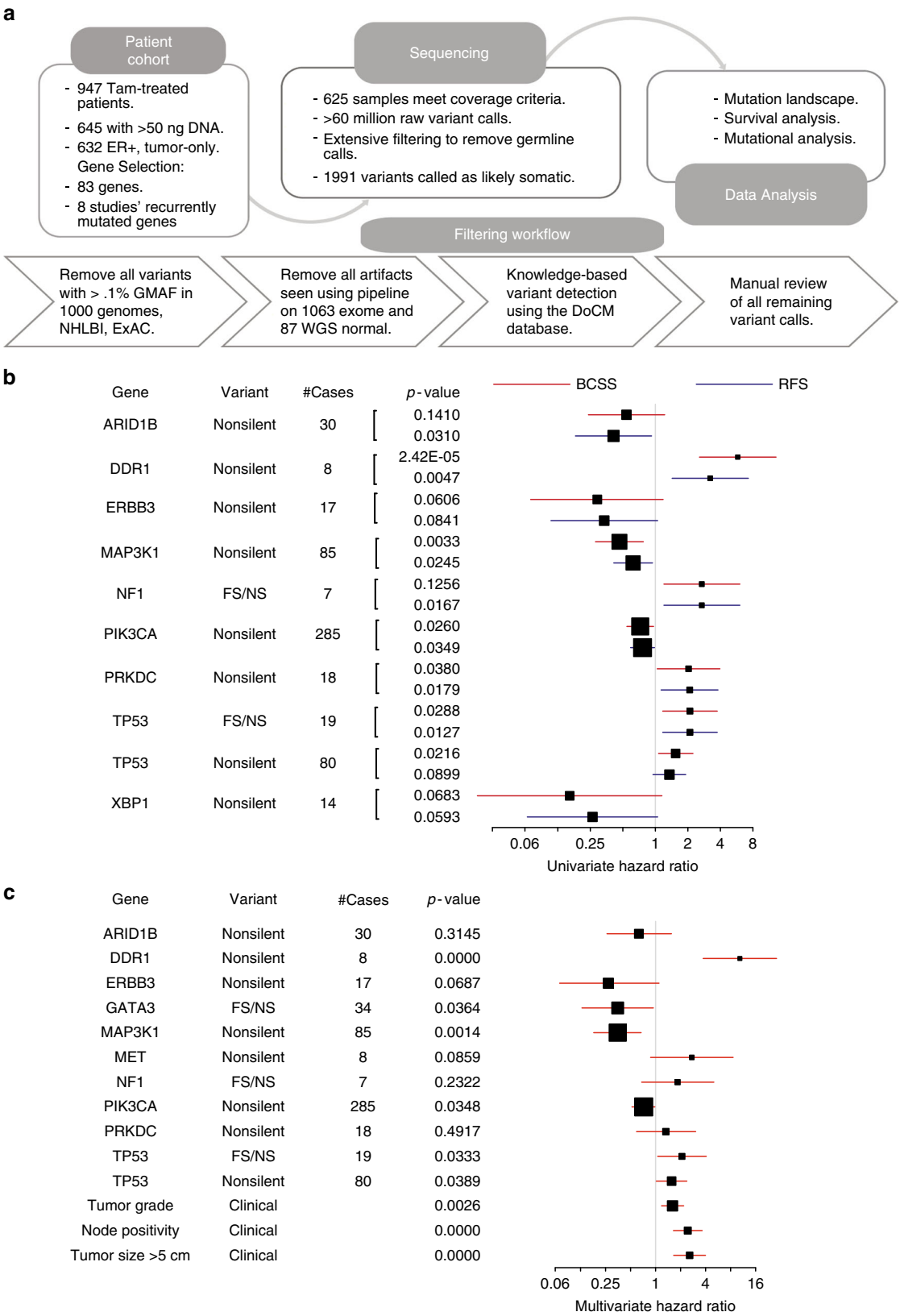


Fig. 3