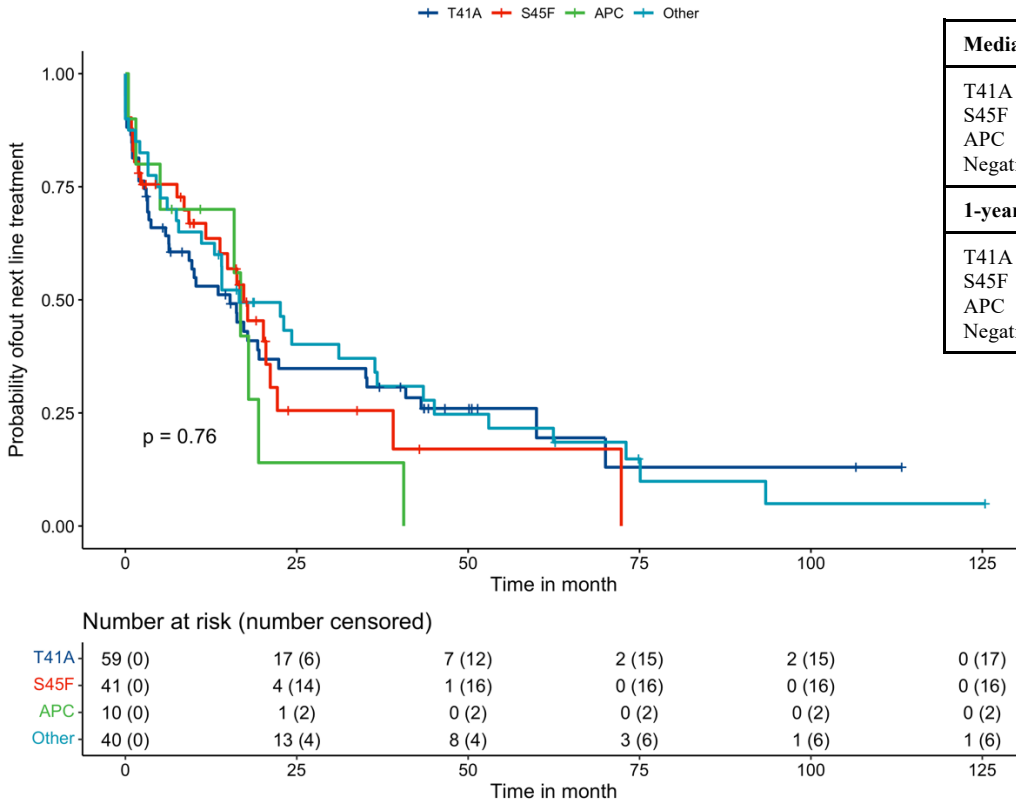
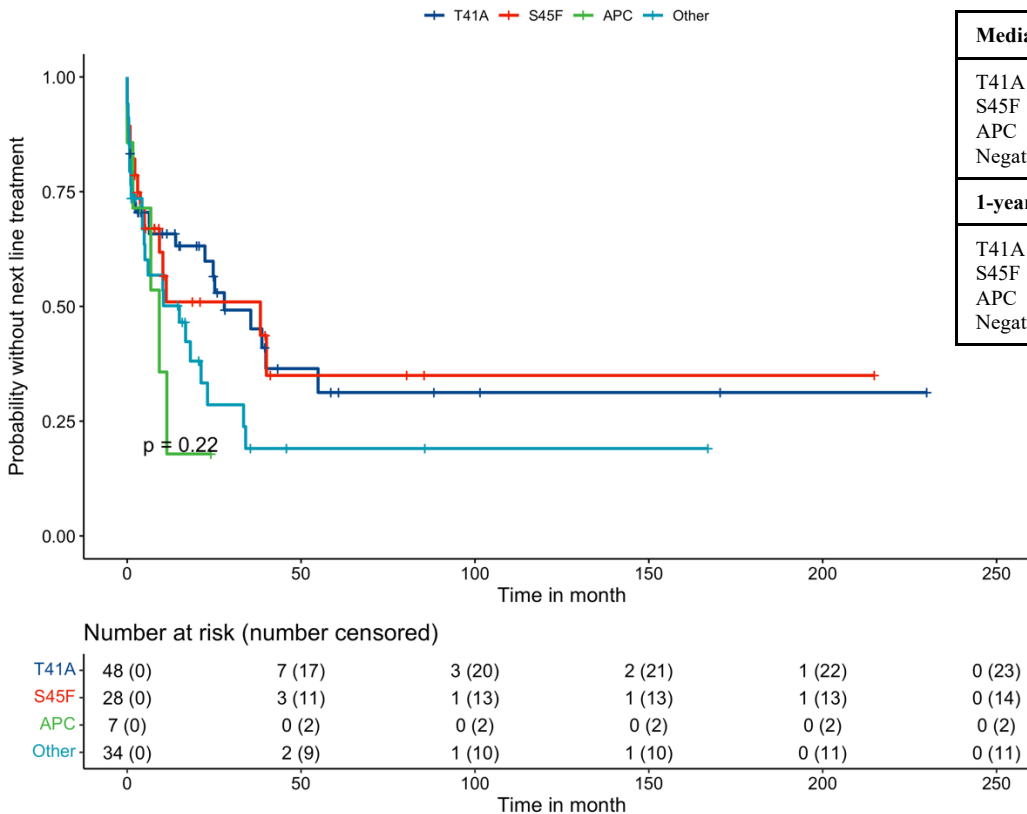


A – First line Time to Next Treatment by mutation subtype



Median PFS	(Months, 95%CI)
T41A	15 [6.4-35]
S45F	17 [12-39]
APC	17 [5.0-NR]
Negative/other	17 [11-43]
1-year PFS	(Proportion, 95%CI)
T41A	0.53 [0.42-0.68]
S45F	0.64 [0.50-0.81]
APC	0.70 [0.47-1.0]
Negative/other	0.63 [0.49-0.80]

B – Second line Time to Next Treatment by mutation subtype



Median PFS	(Months, 95%CI)
T41A	28 [22-NR]
S45F	38 [9.3-NR]
APC	9.2 [1.6-NR]
Negative/other	15 [4.9-33]
1-year PFS	(Proportion, 95%CI)
T41A	0.66 [0.54-0.81]
S45F	0.51 [0.34-0.77]
APC	0.18 [0.03-1.0]
Negative/other	0.50 [0.35-0.71]

Figure S3. Kaplan-Meier survival curves for (A) first and (B) second line Time to Next Treatment by mutation subtype, individual patients.