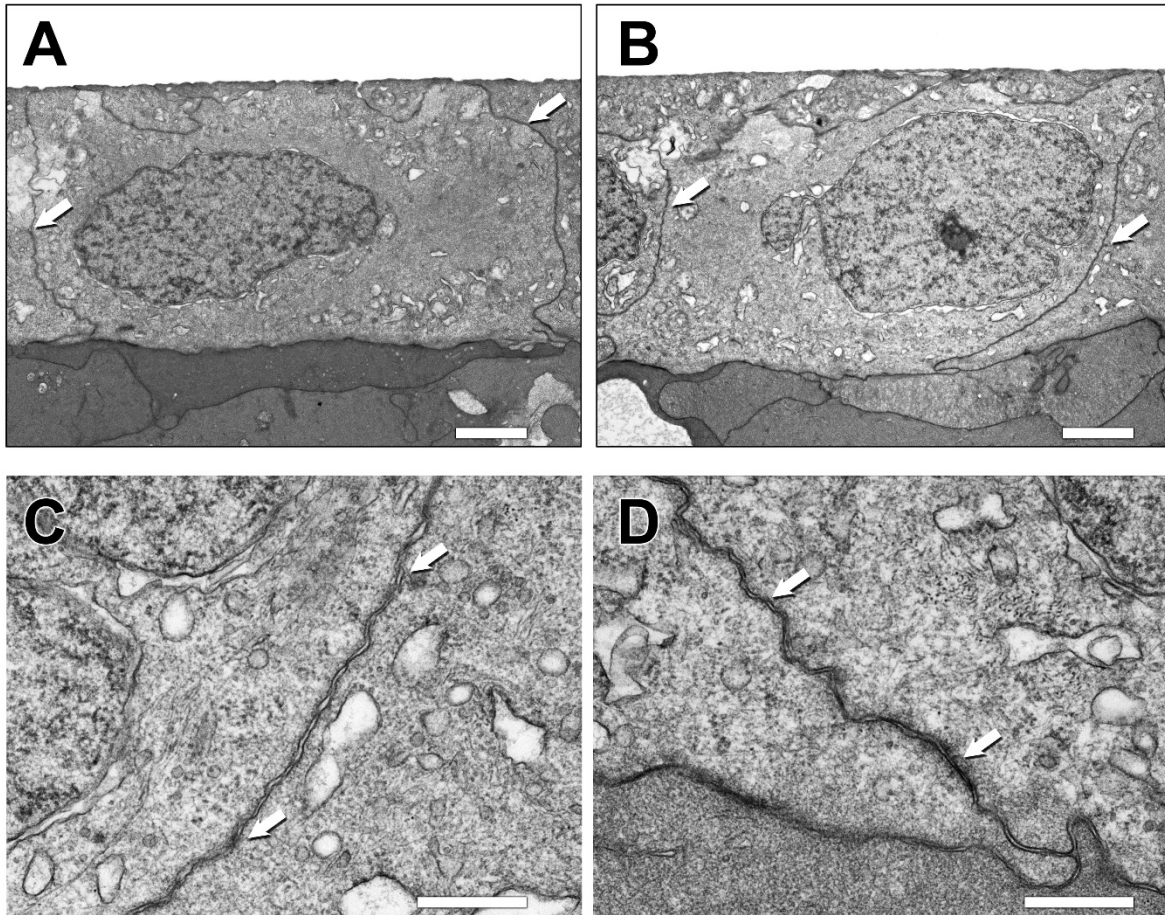
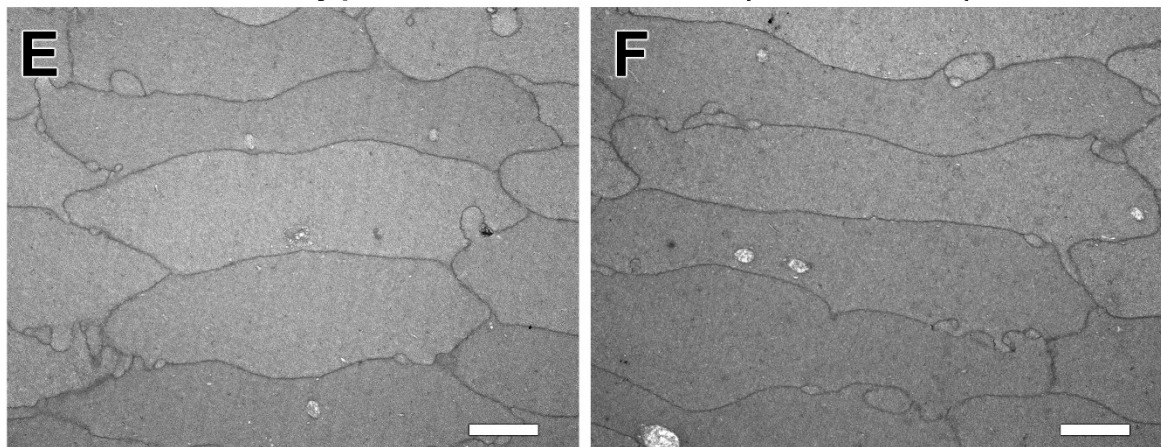


SUPPLEMENTAL FIGURE 3

Wild type lens epithelium (untreated)



Wild type lens fiber cells (untreated)



Supplemental Figure 3. (related to Figure 9). Representative electron micrographs from an untreated, WT mouse. Lens epithelium at low magnification for (A, B) 196-day-old mouse lens, as well as for higher magnification (C, D). The cell-cell contacts appear to be normal and did not display any gaps at low or high magnification. Representative electron micrographs of lens fiber cells (E, F) for a 196-day-old mouse lens. Fiber cell packing has canonical hexagonal packing. *Scale bars*, 2 μm , *white* (A, B, E, F); *Scale bars*, 0.5 μm , *white*.