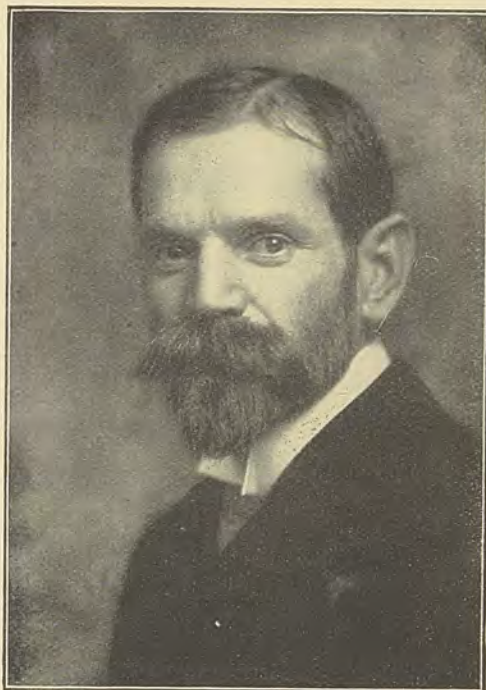




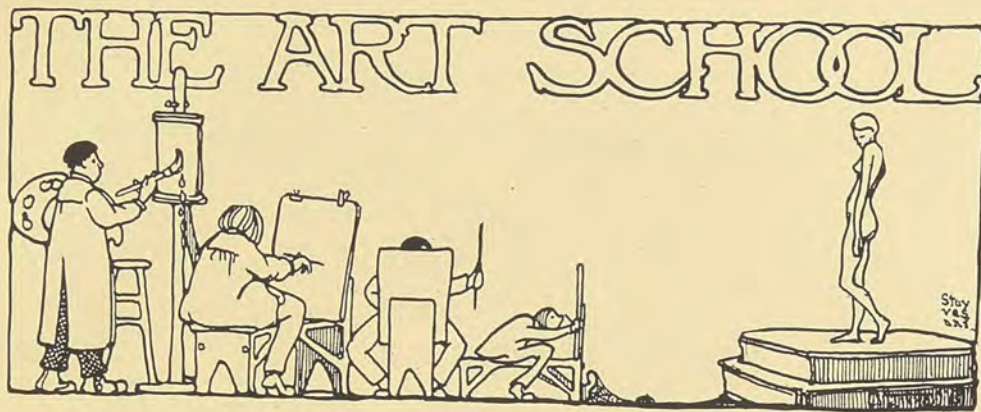
ART

Art School



Edmund Henry Wuerpel

EDMUND HENRY WUERPEL, Director of the School of Fine Arts; First Sellow Medal Manual Training School; Secretary, 1891-1893, and Honorary Member, 1894—, American Art Association, Paris; Recording Secretary, Paris Advisory Committee, Columbian Exposition, Chicago, 1893; Member of Jury of Selection, American Section, Universal Exposition, Paris, 1900; Member of Jury of Selection and Jury of Awards, Louisiana Purchase Exposition, 1904; Active Member and Vice-President, 2x4 Club, 1895-1897; Silver Medal, Louisiana Purchase Exposition, 1904; Silver Medal, Lewis and Clark Exposition, 1905; Member Conference of Cities Committee, and Program Committee, St. Louis Pageant, 1914; Member Advisory Committee of the Middle West, Panama-Pacific Exposition, 1915; Member Special Committee of Paintings of the Middle West; Member of the Jury of Selection and the International Jury of Awards, Panama-Pacific Exposition, 1915.



Faculty

EDMUND HENRY WUERPEL, <i>Director</i>	<i>Lecturer and Instructor in Composition and Artistic Anatomy</i>
HENRIETTA ORD JONES	<i>Instructor in Ceramic Decoration and Pottery</i>
CORDELIA TAYLOR BAKER	<i>Instructor in Bookbinding and Leather Work</i>
*GUSTAV VON SCHLEGELL	<i>Instructor in Drawing, Painting and Monotyping</i>
VICTOR SOPHUS HOLM	<i>Instructor in Modeling</i>
FRED GREEN CARPENTER	<i>Instructor in Drawing, Painting and Joinery</i>
GUSTAV FRIEDRICH GOETSCH	<i>Instructor in Antique</i>
LEOLA BULLIVANT	<i>Instructor in Metal Work</i>
PHILIP HENRY PRATT	<i>Instructor in Decorative Design and Interior Decoration</i>
EDNA RALL	<i>Instructor in Saturday Drawing Class</i>

*On leave of absence—Service of the nation.

Art School Students



CALVIN ATKINS	JOHN BRAFFISH	ESTELLE HITE	HAROLD PIRIE
CARL BRETZMAN	MARGARET BROWN	MARIE HUGHES	MARGUERITE POWEL
GEO. CONREY	ROY BUEHRLE	DOROTHY HOCKADAY	MABEL QUICK
CHAS. F. DIECKMAN	MRS. BULLIVANT	HUGH HOCKADAY	EDNA RALL
WM. FORREST	EDWARD CLARK	ISABEL HOWARD	BESSIE RECHT
HARLAND FRAZER	HALLIE CLARKSON	MARGERT JONES	VIRGINIA RICKETTS
EMIL FREI, JR.	NELL CLEAGE	MIRIAM KENNEDY	ALICE RUBELMAN
ARTHUR FRIEDRICH	HELEN COATSWORTH	SARAH KINEALY	ETHEL RIETH
JULIUS GUVIMER	CARRIE COLLINS	MATHILDE KLOTZ	MARGARET ROETTER
ELMER HAHN	FRED CONWAY	AMELIA KRAG	HILDA RUHL
JOHN M. HELLER, JR.	HENRIETTA DAVIS	HELEN LONG	ELI SCHNAIDER
FRANK HUGHES	BLANCHE DRUSE	MARJORIE LUECKE	ILDA SCHOTT
RODERICK KENISON	CLARA L. DANGLADE	ZELLA MABON	JACK SHERLY
DAVID NEWELL	FANETTA DUDLEY	MYRA MARGLOUS	EMMA STUYVESANT
HARRY RUBIN	MARIAN DUNCAN	MARGARET MCGINES	MARVEL TAYLOR
CLIFFORD SCHOFIELD	HELEN EICHHOLZ	EDITH MCCORMACK	ETHEL TEASDALE
ALBERT SMITH	MANUEL ESSMAN	FLORENCE MILLER	LOUISE THOMAS
GEO. WETTLE	MILDRED FLINN	BEATRICE MOORE	BERENICE TODD
ROBERT WRIGHT	ANITA FORSYTH	LUCILLE MOORE	RUBY TUCK
LEWIS MAYNARD	EMMA FREI	CYRUS B. MORE	SISTER VILLANOVA
WARREN LUDWIG	ANNA GIFFORD	LUCILLE MOORE	HENRIETTA WAHLERT
GLADYS ALEXANDER	LOUIS GELBER	THELMA MOREHOUSE	LUCILLE WALD
ERWIN BENDER	LILLIAN GERELL	JOE OGLESBY	EDNA WIBER
MRS. BERNHEIMER	HARRIET GROSS	ALICE OSMOND	LOUISE WINGFIELD
HOPE BISSLAND	LENORA GROSS	FRANCIS ORRICK	MILDRED WOELK
MRS. BLANKENSTEIN	FRANCES HAPPLEY	KATHRYN PATES	JAMES QUERIO
HELEN BOWELES	ANNA HARRINGTON		



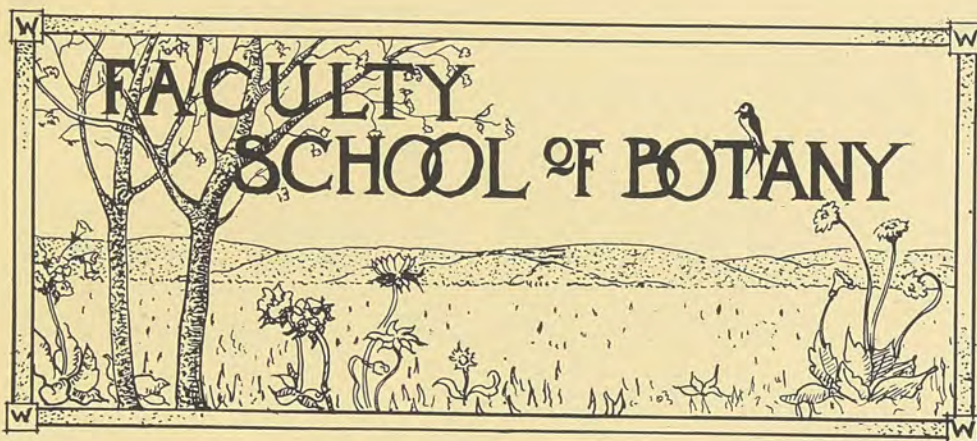
SHAW SCHOOL
OF
BOT ANY



George Thomas Moore, A.B., B.S., A.M., Ph.D.

GEORGE THOMAS MOORE, Director of the Henry Shaw School of Botany; B.S., Wabash, 1894; A.B., Harvard, 1895, A.M., 1896, Ph.D., 1900; Assistant Cryptogamic Laboratory, Harvard, 1897-1899; Instructor in Cryptogamic Botany, Radcliffe, 1898-1899; in charge Botanical Department, Dartmouth, 1899-1901; Physiologist and Algologist, Bureau of Plant Industry, U. S. Department of Agriculture, 1901-1902; in charge of Laboratory, Plant Physiology, 1902-1905; Professor of Plant Physiology and Applied Botany, Henry Shaw School of Botany; Plant Physiologist, Missouri Botanical Gardens, 1909-1912; Engelman Professor of Botany, Washington University; Director, Henry Shaw School of Botany; Director, Missouri Botanical Gardens, 1912-—; Instructor Cryptogamic Botany, Marine Biological Laboratory, 1896-1907; Head of Department of Botany, 1907; Lecturer, "Contamination of Water Supplies," Thayer School of Engineering, 1900-1902; "Economic Botany," Dartmouth, 1901-1902; Fellow, American Association for the Advancement of Science; Secretary, Botanical Society of America, 1910-—; President, Engelman of Science; Secretary, Botanical Society of America, 1910-—; President, Engelman Botany Club, 1912-—; President of St. Louis Biological Club, 1912; Member of Society of Bacteriologists; Philosophical Society; Washington Academy of Science; St. Louis Academy of Science; Published "On the Contamination of Water Supplies by Algae," "The Fixation of Free Nitrogen by Rott Nodule Organisms," "Morphology and Physiology of the Algae."

Shaw School of Botany



GEORGE THOMAS MOORE, PH.D. *Engelman Professor of Botany and Dean of
the Henry Shaw School of Botany*

BENJAMIN MINGE DUGGAR, PH.D. *Professor of Plant Physiology*

JESSE MORE GREENMAN, PH.D. *Associate Professor of Botany*

EDWARD ANGUS BURT, PH.D. *Associate Professor of Botany*

*JOSEPH WARREN SEVERY, A.B. *Teaching Fellow in Botany*

EDWIN BLAKE PAYSON, A.B. *Teaching Fellow in Botany*

*On leave of absence.



Dandelion Day

