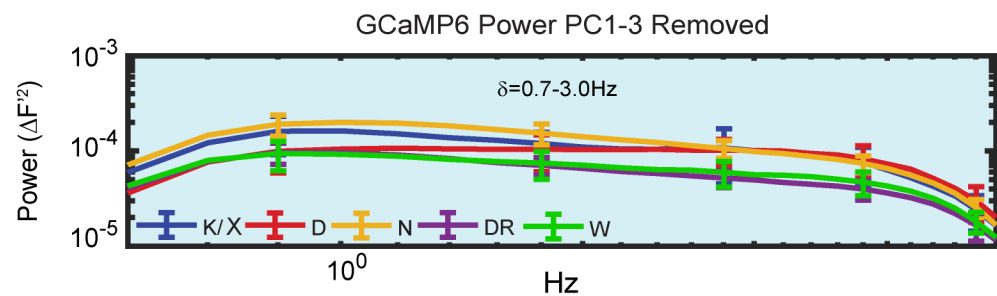
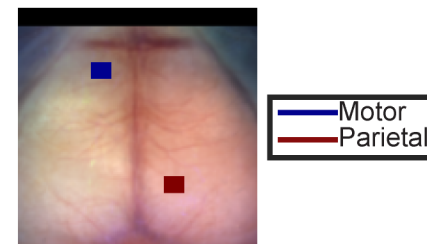


A



B



C

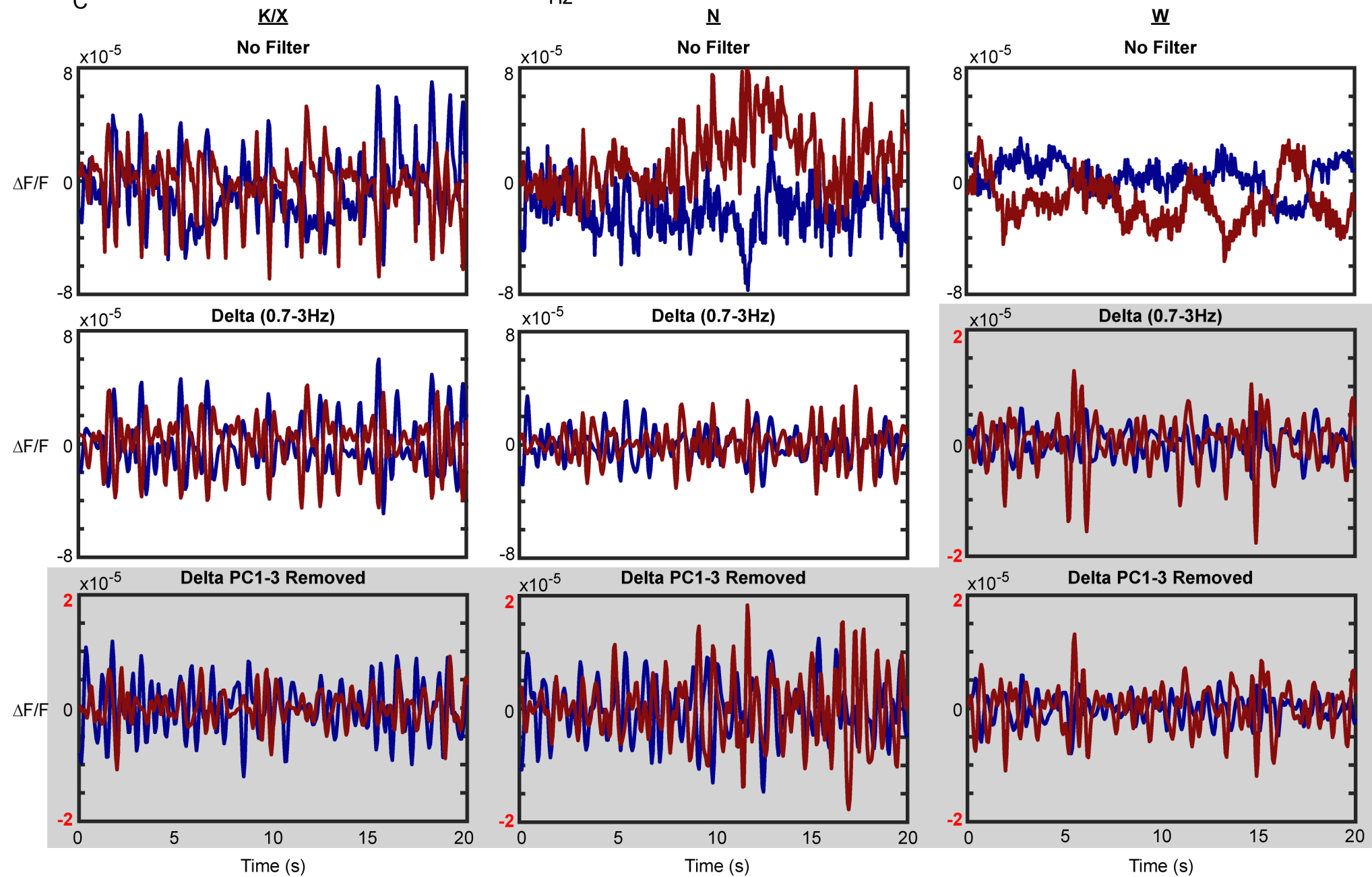


Figure S5. Removal of the first three PCs in the delta GCaMP6 sleep/anesthesia data reveals delta wake activity. A) Average (n=5) GCaMP6 power spectra of the 0.7-3.0 Hz filtered, PC 1-3 removed data. B) Graphic delineating motor and parietal areas used to create time traces in C). C) Spatially averaged time traces from the pixels in B) shown across 20 seconds for broadband (top), delta (middle), and PC 1-3 removed (bottom) GCaMP6 data. Shading is included to illustrate the comparison of the PC removed data to unmodified delta wake data.