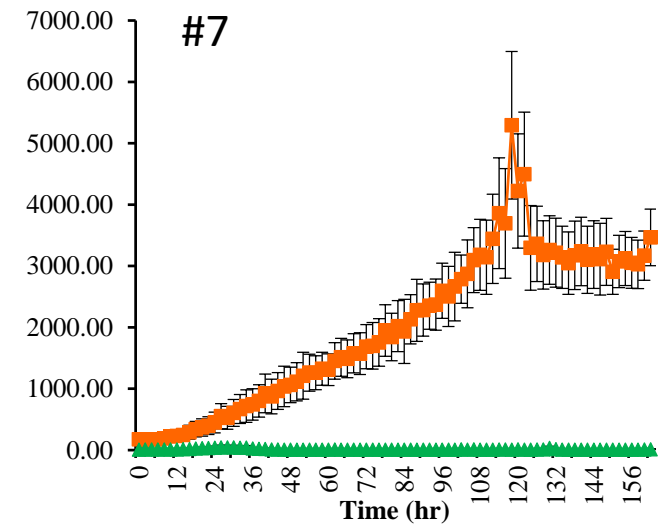
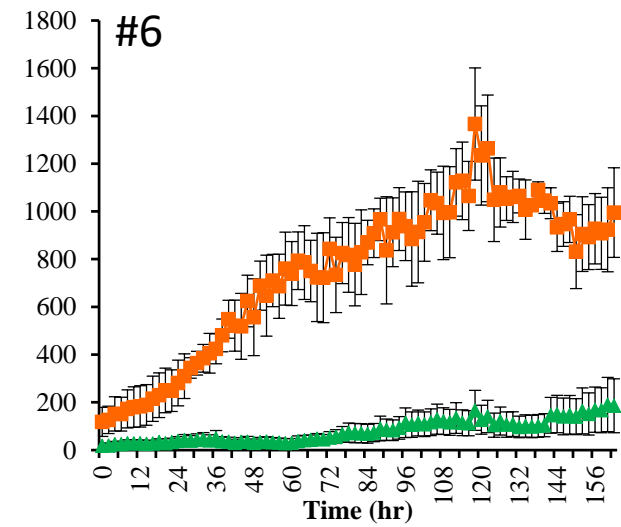
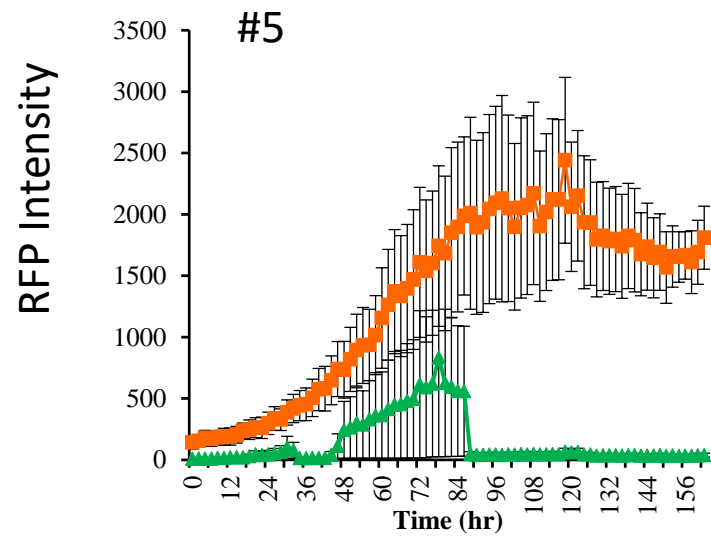
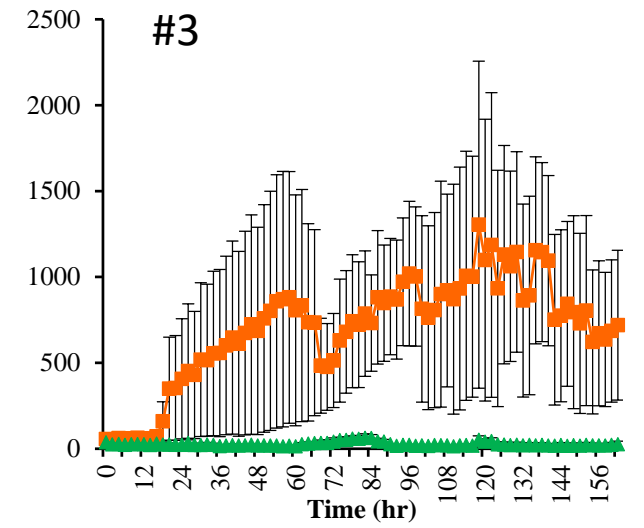
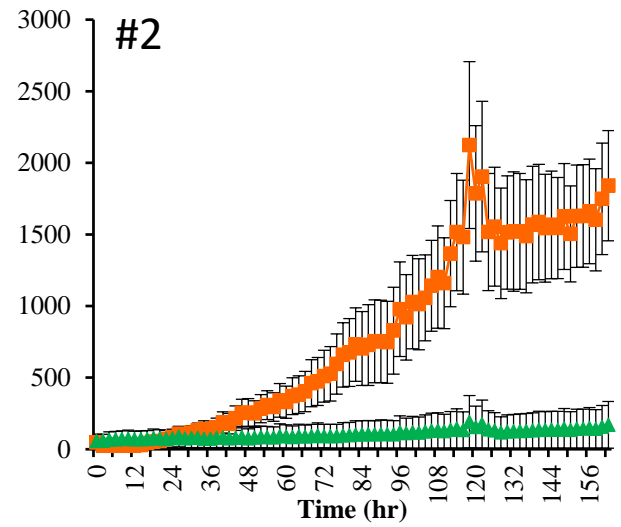
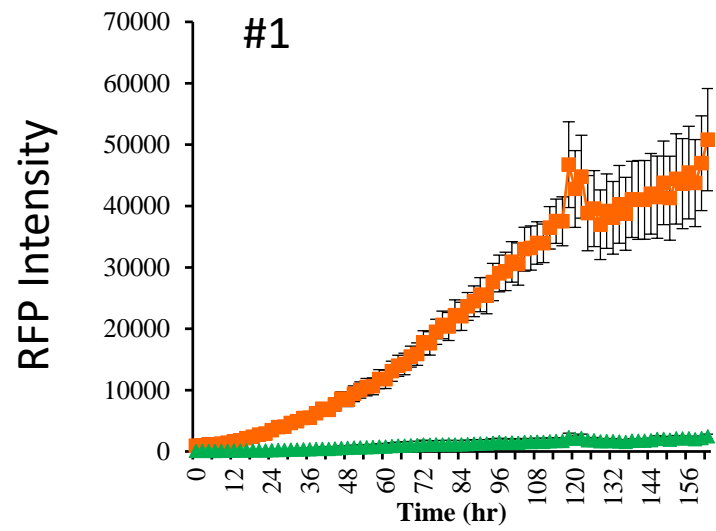


S9 Fig

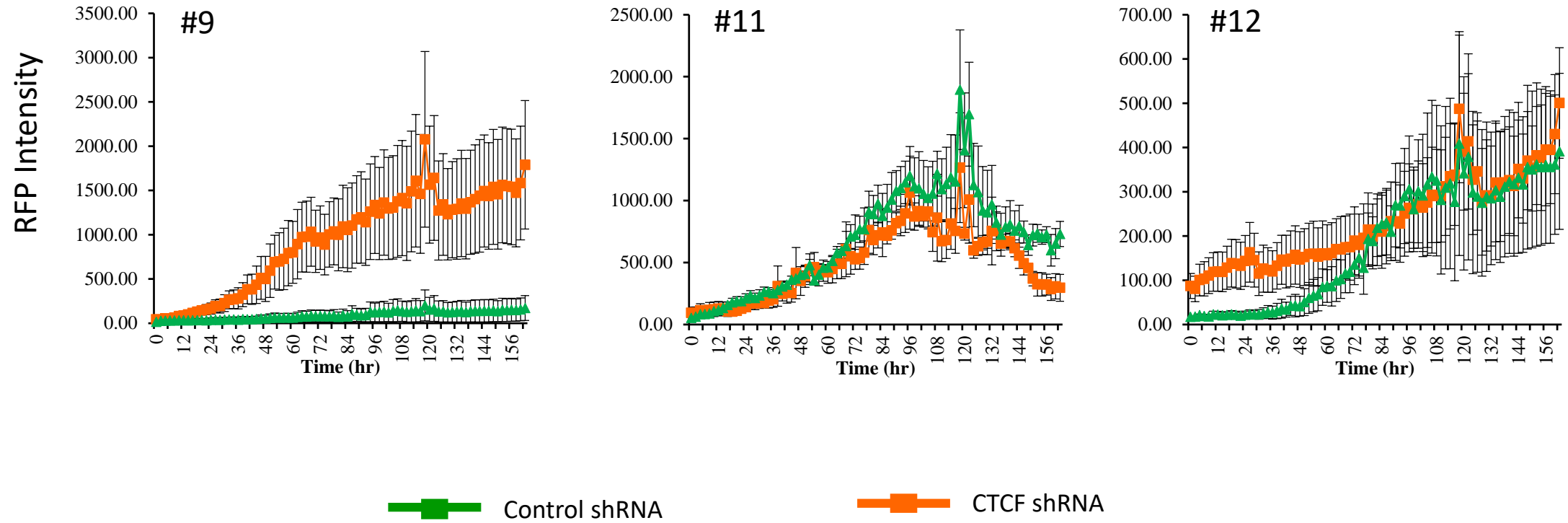


Control shRNA



CTCF shRNA

S9 Fig



**S9 Fig. Inhibition of CTCF binding to HTLV-1 provirus affects proviral gene transcription**

Clonal HTLV-1 infected JET cell lines were generated, each carrying a single, latent provirus at a unique integration site. Viral gene expression was activated with CD3/CD8 antibodies and monitored by measuring Tax mediated RFP production (Y- axis) using the IncuCyte live cell image system.