

Fred G. Carpenter.

Athletic Association Officers



FIRST TERM

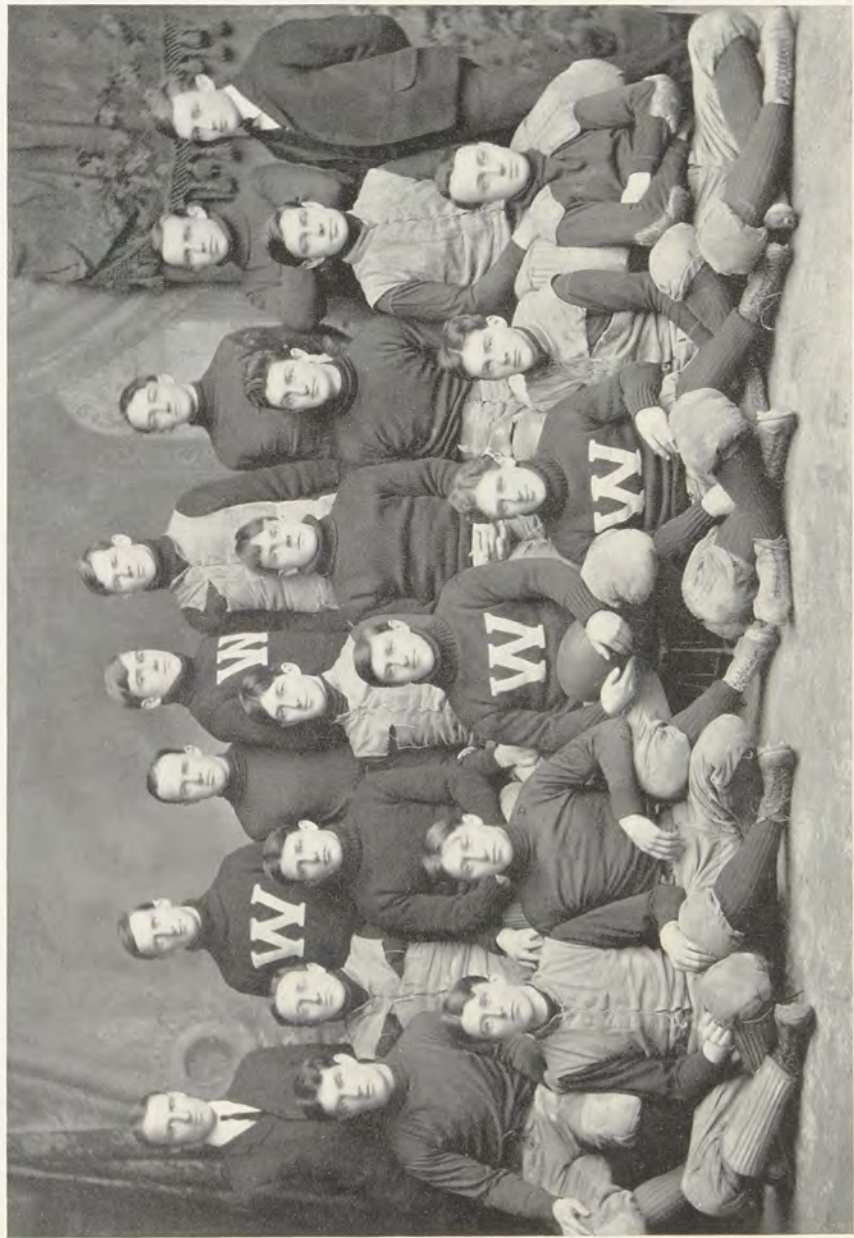
HANS SCHANTL	<i>President</i>
EUGENE SESSINGHAUS	<i>Vice-President</i>
EDWARD EVERS	<i>Secretary</i>
ALEXANDER S. LANGSDORF, M.M.E.	<i>Treasurer</i>

SECOND TERM

RICHARD J. LOCKWOOD	<i>President</i>
ARNO D. KRAUSE	<i>Vice-President</i>
WILLIAM L. HALL	<i>Secretary</i>
ALEXANDER S. LANGSDORF, M.M.E.	<i>Treasurer</i>

ADVISORY BOARD

CALVIN M. WOODWARD, Ph.D.,	<i>Chairman</i>
EDWARD H. KEISER, Ph.D.,	<i>Secretary</i>
WILLIAM S. CURTIS, LL.D.	
ROBERT LUEDEKING, M.D.	
CHARLES REBER	
THEODORE R. BLAND	





Football Team

OFFICERS

JOHN HENRY BECKERT	<i>Manager</i>
ARNO DOMINIC KRAUSE	<i>Captain</i>
OSCAR H. ELBRECHT, M.D.	<i>Medical Adviser</i>
HUGH WHITE, (Michigan, '02)	<i>Coaches</i>
WAYNE SMITH, (Washington, '00)	

Team of 1902

C. H. L. CASSELL	<i>Centre</i>	F. N. GORDON	<i>Left End</i>
HANS SCHANTL	<i>Left Guard</i>	S. P. SMITH	<i>Right Half Back</i>
G. A. PIEPER	<i>Right Guard</i>	A. C. ROBERTS	<i>Left Half Back</i>
SAM SHERMAN	<i>Right Tackle</i>	A. D. KRAUSE	<i>Quarter Back</i>
R. A. WEBER	<i>Left Tackle</i>	R. I. TOLSON	<i>Full Back</i>
J. M. BISCHOFF	<i>Right End</i>		

Substitutes

W. E. GABLE	M. PITZMAN
D. B. GARSTANG	W. H. NIX
W. KRAUSE	A. G. FULLER
W. A. HEIMBUECHER	W. J. BENNER
T. A. SNELL	S. SHERMAN

Record of Football Team

October 4	Washington 0	Lombard	0	St. Louis
October 11	Washington 0	Illinois University	44	Champagne, Illinois
October 18	Washington 33	Rose Polytechnic	0	St. Louis
October 25	Washington 6	Sewanee	22	St. Louis
November 1	Washington 12	Vanderbilt	33	Nashville, Tennessee
November 8	Washington 0	Missouri	27	St. Louis
November 15	Washington 0	Iowa	61	Iowa City, Iowa
November 22	Washington 33	Central	5	St. Louis
November 27	Washington 0	Haskell Indians	18	St. Louis





BASE BALL

Team of 1902

ALBAN JENNINGS ANDERSON
 EUGENE SESSINGHAUS
 JULIUS MONTGOMERY BISCHOFF
 RICHARD MORGAN SAYLOR
 NEWMAN SAMUEL
 EUGENE F. SESSINGHAUS
 JOEL FRANKLIN WATSON
 ARTHUR CHESTER ROBERTS
 ERWIN OSSING
 ALBERT BLACK
 ARNO DOMINIC KRAUSE

Manager
Captain
Catcher
Pitcher
First Base
Second Base
Shortstop
Third Base
Left Field
Centre Field
Right Field

Substitutes

MAURICE LEVY
 CLIFFORD T. DARBY

LLEWELYN SALE
 ALBAN J. ANDERSON







Varsity Track Team 1902

Washington Records

EVENTS	RECORDS	HOLDER
50 Yard Dash	5 ⁹ / ₅ Seconds	E. F. Sessinghaus
100 Yard Dash	10 ¹ / ₅ Seconds	Charles S. Reber
220 Yard Dash	23 ⁹ / ₅ Seconds	Theodore R. Bland
440 Yard Dash	53 ¹ / ₅ Seconds	Sears Lehmann
880 Yard Run	2 Minutes 4 ² / ₅ Seconds	Harvey Lamb
1 Mile Run	5 Minutes 3 ¹ / ₅ Seconds	W. L. Hall
120 Yard Hurdle	16 ⁴ / ₅ Seconds	E. S. Wilson
220 Yard Hurdle	27 ² / ₅ Seconds	S. P. Smith
High Jump	70 Inches	Albert D. Fuller
Broad Jump	23 Feet 5 ⁹ / ₈ Inches	Charles S. Reber
16 Pound Shot Put	35 Feet 8 ¹ / ₂ Inches	Clarence Gamble



Track Team of 1902

TOM AIKEN
WILLIAM W. BREY
ALEX R. SKINKER

SETH P. SMITH
HAMILTON DAUGHADY
JULIUS M. BISCHÖFF
WILL HALL
PAUL D. KELLETER

JOHN LAICHINGER
SEARS LEHMANN
WILLIAM W. BREY
ARTHUR C. KIMBALL
TOM P. MOORE

Couch
Captain
Manager

May 25th First Dual Meet with Missouri State University, held at Columbia, Missouri, won by Washington University.

Scores

	FIRSTS	SECONDS	POINTS
Washington University	7	2	37
Missouri State University	4	8	28

Scoring Firsts five points, Seconds one point.





Tennis Team

HARRY MOSES POLLARD
FRANK SOUTHER CODDING
SAMUEL WALKER FORDER
EUGENE TOWNER SENSENEY

*Captain
Manager*



STATE INTERCOLLEGIATE MATCH Washington vs. Missouri State University

SINGLES

S. W. FORDER, W. vs. HARRY HOWARD BROADHEAD, M. S. U.
H. M. POLLARD, W. vs. ALLEN LEE WITHERS, M. S. U.
E. T. SENSENEY, W. vs. HALL FREY, M. S. U.

All matches won by Washington

DOUBLES

SENSENEY AND POLLARD, W. vs. BROADHEAD AND FREY, M. S. U.
Won by Washington

INDIVIDUAL CHAMPIONSHIP

S. W. FORDER, W. vs. H. M. POLLARD, W.
Won by S. W. FORDER

UNIVERSITY TOURNAMENT

S. W. FORDER *Winner of the Singles*
E. T. SENSENEY AND H. M. POLLARD *Winners of the Doubles*

Wearers of the W



WINGS

FOR 1902-1903

EUGENE SESSINGHAUS
 JULIUS M. BISCHOFF
 ARTHUR C. ROBERTS
 Newman Samuel
 ARNO D. KRAUSE
 ALBAN J. ANDERSON
 JOEL F. WATSON
 ERWIN OSSING
 ALBERT E. BLACK
 CHARLES CASSELL
 G. A. PIEPER
 T. A. SNEEL
 D. HOWARD HOPE
 FRANK N. GORDON
 SETH P. SMITH
 RUSSELL I. TOLSON
 ROBIN WEBER
 HAMILTON DAUGHADY
 TOM MOORE
 ARTHUR C. KIMBALL
 SEARS LEHMANN
 WILL HALL
 WILLIAM W. BREV
 HENRY M. POLLARD
 SAMUEL W. FORDER
 EUGENE T. SENSENEY
 PAUL D. KELLETER
 JOHN LAICHINGER
 MARSH PITZMAN
 HANS SCHANTL
 SAM SHERMAN
 WALTER KRAUSE

Baseball
 Baseball, Football, Track
 Baseball, Football
 Baseball
 Baseball, Football
 Baseball
 Baseball
 Baseball
 Baseball
 Football
 Football
 Football
 Football
 Football
 Football, Track
 Football
 Football
 Track
 Track
 Track
 Football, Track
 Track
 Track
 Tennis
 Tennis
 Tennis
 Track
 Track
 Football
 Football
 Football
 Football





Senior Basketball Team

ALBERT BLACK *Captain*
HANS SHANTL
EUGENE SESSINGHAUS
MAURICE LEVY
OSCAR STEIDEMANN